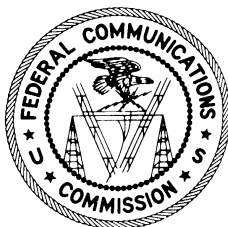


# **High-Speed Services for Internet Access: Status as of June 30, 2005**

Industry Analysis and Technology Division  
Wireline Competition Bureau  
April 2006



---

This report is available for reference in the FCC's Reference Information Center, Courtyard Level, 445 12th Street, SW, Washington, DC. Copies may be purchased by contacting Best Copy and Printing, Inc., 445 12th Street, SW, Room CY-B402, Washington, DC 20554, telephone (800) 378-3160, or via their website at [www.bcpiweb.com](http://www.bcpiweb.com). The report can also be downloaded from the Wireline Competition Bureau Statistical Reports Internet site at [www.fcc.gov/wcb/stats](http://www.fcc.gov/wcb/stats).

---

## High-Speed Services for Internet Access: Status as of June 30, 2005

Congress directed the Commission and the states, in section 706 of the Telecommunications Act of 1996, to encourage deployment of advanced telecommunications capability in the United States on a reasonable and timely basis.<sup>1</sup> To assist in its evaluation of such deployment, the Commission instituted a formal data collection program to gather standardized information about subscribership to high-speed services, including advanced services, from wireline telephone companies, cable system operators, terrestrial wireless service providers, satellite service providers, and any other facilities-based providers of advanced telecommunications capability.<sup>2</sup>

We summarize here information from the twelfth data collection, thereby presenting a snapshot of subscribership as of June 30, 2005.<sup>3</sup> High-speed lines connecting homes and businesses to the Internet increased by 13% during the first half of 2005, from 37.9 million to 42.9 million lines in service, compared to a 17% increase, from 32.5 million to 37.9 million lines, during the second half of 2004. For the full twelve month period ending June 30, 2005, high-speed lines increased by 32% (or 10.4 million lines). The presence of high-speed service subscribers was reported in all 50 states, the District of Columbia, American Samoa, Guam, Puerto Rico, and the Virgin Islands, and in 98% of the Zip Codes in the United States.

All facilities-based providers of high-speed connections to end users were required to report to the Commission basic information about their service offerings and types of customers as of June 30, 2005.<sup>4</sup> Previously collected data (i.e., as of December 31, 1999 and each succeeding

---

<sup>1</sup> See §706, Pub.L. 104-104, Title VII, Feb. 8, 1996, 110 Stat. 153, reproduced in the notes under 47 U.S.C. § 157. We use the term “high-speed” to describe services that provide the subscriber with transmissions at a speed in excess of 200 kilobits per second (kbps) in at least one direction. “Advanced services,” which provide the subscriber with transmission speeds in excess of 200 kbps in each direction, are a subset of high-speed services.

<sup>2</sup> *Local Competition and Broadband Reporting*, CC Docket No. 99-301, Report and Order, 15 FCC Rcd 7717 (2000); *Local Telephone Competition and Broadband Reporting*, WC Docket No. 04-141, Report and Order, 19 FCC Rcd 22340 (2004). During this data gathering program, qualifying providers file FCC Form 477 each year on March 1 (reporting data for the preceding December 31) and September 1 (reporting data for June 30 of the same year). An updated FCC Form 477, and instructions for that particular form, for each specific round of the data collection may be downloaded from the FCC Forms website at [www.fcc.gov/formpage.html](http://www.fcc.gov/formpage.html).

<sup>3</sup> Statistical summaries of the earlier Form 477 data collections appeared in *Deployment of Advanced Telecommunications Capability to All Americans in a Reasonable and Timely Fashion*, CC Docket No. 98-146, Second Report, 15 FCC Rcd 20913 (2000) (*Second 706 Report*), available at [www.fcc.gov/broadband/706.html](http://www.fcc.gov/broadband/706.html), and in previous releases of the *High-Speed Services for Internet Access* report, available at [www.fcc.gov/wcb/stats](http://www.fcc.gov/wcb/stats).

<sup>4</sup> For reporting purposes, an entity is a “facilities-based” provider of high-speed connections if it owns the portion of the physical “local loop” or other facility that terminates at the end user location, if it obtains unbundled network elements (UNEs), special access lines, and other leased facilities that terminate at end user locations and equips them to operate as high-speed connections, or if it uses spectrum on a licensed or unlicensed basis to terminate high-speed connections at end user locations. Non-facilities-based Internet Service Providers (ISPs), as such, have no reporting obligation. End-user lines equipped as high-speed connections by, for example, an incumbent local exchange carrier (ILEC) must be reported by the ILEC or an affiliate irrespective of whether the end user of the retail high-speed Internet-access service is billed by the ILEC, its ISP affiliate, another affiliate, or its billing agent, (continued....)

June 30 and December 31 through the end of 2004) were reported by facilities-based providers with at least 250 high-speed lines (or wireless channels) in service in a particular state, and by a few smaller entities that filed on a voluntary basis.<sup>5</sup> Small providers of high-speed connections, many of whom serve rural areas with relatively small populations, were therefore unrepresented in the earlier data. More than twice as many holding companies and unaffiliated entities reported information about high-speed connections in June 2005 as had reported six months earlier.<sup>6</sup>

The data reported for June 30, 2005 include, for the first time, added detail about the information transfer rates (“speeds”) of the reported connections.<sup>7</sup> They also provide a more detailed breakdown of high-speed connections by type of technology. And, for the first time, we report estimates of the extent to which Digital Subscriber Line (DSL) high-speed connections provided by incumbent local exchange carriers (ILECs), and cable modem high-speed service provided by cable system operators, are available to households residing in the areas these companies serve.

Readers can draw the following broad conclusions from the data summarized in this report:

- High-speed lines (or wireless channels) connecting homes and businesses to the Internet at speeds that exceed 200 kbps in *at least one* direction increased from 37.9 million lines to 42.9 million lines during the first half of 2005. For the full twelve month period ending June 30, 2005, high-speed lines increased by 10.4 million, from 32.5 million lines to 42.9 million lines. See Table 1 and Chart 1.
- Of the 42.9 million total high-speed lines, 55.8% were cable modem, 37.7% were asymmetric DSL (ADSL), 2.1% were symmetric DSL (SDSL) or traditional wireline, 2.0% were fiber to the end user premises, and 2.3% used other technologies.<sup>8</sup> See Chart 2.

(Continued from previous page) \_\_\_\_\_

or by an unaffiliated ISP that has incorporated the ILEC’s high-speed service into a premium Internet-access service marketed under the ISP’s own name.

<sup>5</sup> High-speed lines reported in earlier voluntary submissions represented less than 0.05% of total reported high-speed lines. As of June 30, 2005, filers with fewer than 250 lines in a state (including entities that previously filed on a voluntary basis) represented about 0.2% of total reported high-speed lines.

<sup>6</sup> The nationwide number of holding companies and unaffiliated entities reporting high-speed lines increased from 552 as of December 31, 2004 to 1,270 as of June 30, 2005. See Table 7 for the nationwide counts and, for state-specific counts, see Table 8.

<sup>7</sup> Some Internet-access connections that telephone companies, cable system operators, and wireless service providers offer do not meet the 200 kbps criterion for reporting high-speed connections to the Commission, but may nevertheless meet the needs of the subscribers who select them over a more expensive service option.

<sup>8</sup> Providers are instructed to report a high-speed connection in the (mutually exclusive) technology category that characterizes the last few feet of distribution plant to the subscriber’s premises. In addition to cable modem, ADSL, SDSL, traditional wireline such as T-carrier, and optical carrier (fiber to the end user) connections, reporting entities specify satellite, terrestrial fixed wireless (licensed or unlicensed), terrestrial mobile wireless (licensed or unlicensed), electric power line, or “all other” technology.

- Lines connecting homes and businesses to the Internet at transmission speeds that exceed 200 kbps in *both* directions increased from 28.9 million lines to 37.7 million lines during the first half of 2005. For the full twelve month period ending June 30, 2005, they increased by 14.2 million, from 23.5 million lines to 37.7 million lines.<sup>9</sup> See Table 2 and Chart 3.
- Of the 37.7 million lines which were faster than 200 kbps in *both* directions, 60.2% were cable modem, 34.6% were ADSL, 2.3% were SDSL or traditional wireline, 2.3% were fiber to the end user premises, and 1% used other technologies. See Chart 4.
- Of the 42.9 million total high-speed lines, 38.5 million were designed to serve primarily residential end users. Cable modem represented 61.0% of these lines while 37.2% were ADSL, 0.4% were SDSL or traditional wireline connections, 0.2% were fiber to the end user premises, and 1.1% used other technologies. See Table 3 and Chart 6. For state-specific data, see Table 13.
- Of the 37.7 million lines that were faster than 200 kbps in *both* directions, 34.3 million lines were designed to serve primarily residential end users. Cable modem represented 64.9% while 33.9% were ADSL, 0.5% were SDSL or traditional wireline, 0.2% were fiber to the end user premises, and 0.5% used other technologies. See Table 4 and Chart 8.
- Of the 37.7 million reported high-speed lines that were faster than 200 kbps in *both* directions as of June 30, 2005, 61.8% were at least 2.5 mbps in the faster direction and 38.2% were slower than 2.5 mbps in the faster direction. See Table 5.
- ILECs or their affiliates reported 96.2% of ADSL connections and 60.5% of traditional wireline connections. When all technologies are considered, ILECs reported 38.8% of total high-speed connections. See Table 6.
- High-speed lines were reported in all 50 states, the District of Columbia, American Samoa, Guam, Puerto Rico, and the Virgin Islands. See Table 9 and, for historical data, Tables 10 - 12.
- As a nationwide average, we estimate that high-speed DSL connections were available to 76% of the households to whom ILECs could provide local telephone service, and that high-speed cable modem service was available to 91% of the households to whom cable system operators could provide cable TV service. See Table 14.
- The Commission's data collection program requires service providers to list the Zip Codes in which the provider has at least one high-speed connection in service to an end user, and 98%

---

<sup>9</sup> Providers also estimate the percentage of high-speed connections that are faster than 2 mbps in both directions. About 0.4 million such connections were reported as of December 31, 2004. About 21% of these connections were reported in the other traditional wireline category and about 60% were reported in the optical carrier category.

of the nation's Zip Codes were on the list of at least one provider.<sup>10</sup> The most widely reported technologies by this measure were satellite (with at least some presence reported in 86% of Zip Codes), ADSL (in 78% of Zip Codes), and cable modem (in 62% of Zip Codes). ADSL and/or cable modem connections were reported to be present in 85% of Zip Codes. See Tables 15 and 16.

- Our analysis indicates that 99% of the country's population lives in the 98% of Zip Codes where a provider reports having at least one high-speed service subscriber. Moreover, numerous competing providers report serving high-speed subscribers in the major population centers of the country. See the map that follows Table 16.
- High population density has a positive association with reports that high-speed subscribers are present, and low population density has an inverse association. For example, high-speed subscribers were reported to be present in 99% of the most densely populated Zip Codes and in 84% of Zip Codes with the lowest population densities.<sup>11</sup> The comparable figure for the lowest-density Zip Codes was 73% a year earlier. See Table 18.
- High median household income also has a positive association with reports that high-speed subscribers are present. In the top one-tenth of Zip Codes ranked by median household income, high-speed subscribers are reported in 99% of Zip Codes. By contrast, high-speed subscribers are reported in 88% of Zip Codes with the lowest median household income, compared to 81% a year earlier. See Table 19.

As other information from the Commission's data collection program (FCC Form 477) becomes available, it will be included in future reports on the deployment of advanced telecommunications capability and in publications such as this one.

We invite users of this information to provide suggestions for improved data collection and analysis by:

- Using the attached customer response form,
- E-mailing comments to [James.Eisner@fcc.gov](mailto:James.Eisner@fcc.gov) or [Suzanne.Mendez@fcc.gov](mailto:Suzanne.Mendez@fcc.gov),
- Calling the Industry Analysis and Technology Division of the Wireline Competition Bureau at (202) 418-0940, or
- Participating in any formal proceedings undertaken by the Commission to solicit comments for improvement of FCC Form 477.

---

<sup>10</sup> Lists of Zip Codes with number of service providers as reported in the FCC Form 477 filings are made available at [www.fcc.gov/wcb/stats](http://www.fcc.gov/wcb/stats) in a format that honors requests for nondisclosure of information the reporting entities assert is competitively sensitive.

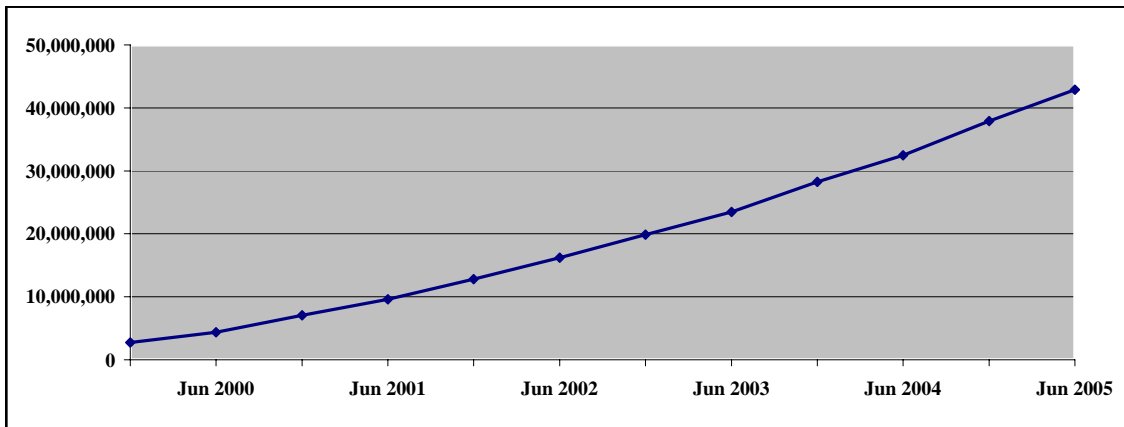
<sup>11</sup> For this comparison, we consider the most densely populated Zip Codes to be those with more than 3,147 persons per square mile (the top decile of Zip Codes) and the least densely populated Zip Codes to be those with fewer than 6 persons per square mile (the bottom decile).

**Table 1**  
**High-Speed Lines <sup>1</sup>**  
**(Over 200 kbps in at least one direction)**

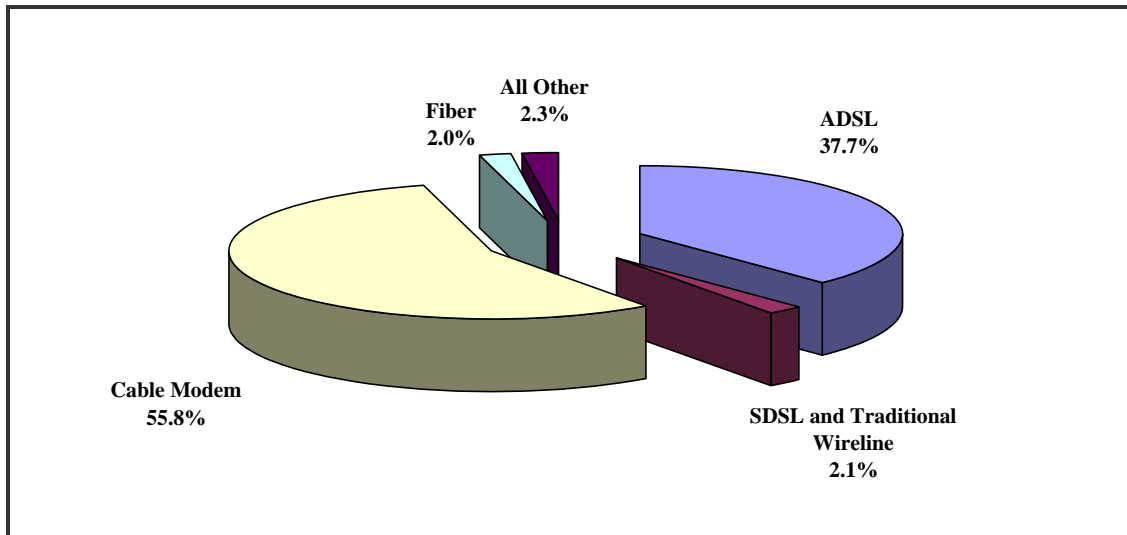
Technology <sup>2</sup>	2000	2001	2002	2003	2004		2005
	Jun	Jun	Jun	Jun	Jun	Dec	Jun
ADSL	951,583	2,693,834	5,101,493	7,675,114	11,398,199	13,817,280	16,182,076
SDSL and Traditional Wireline	758,594	1,088,066	1,186,680	1,215,713	1,407,121	1,468,566	905,648
SDSL	-	-	-	-	-	-	423,716
Traditional Wireline	-	-	-	-	-	-	481,932
Cable Modem	2,284,491	5,184,141	9,172,895	13,684,225	18,592,636	21,357,400	23,938,908
Fiber <sup>3</sup>	307,151	455,593	520,884	575,613	638,812	697,779	864,831
Satellite and Wireless	65,615	194,707	220,588	309,006	421,690	549,621	970,133
Satellite	-	-	-	-	-	-	377,291
Fixed Wireless	-	-	-	-	-	-	213,306
Mobile Wireless	-	-	-	-	-	-	379,536
Power Line and Other	-	-	-	-	-	-	4,872
<b>Total Lines</b>	<b>4,367,434</b>	<b>9,616,341</b>	<b>16,202,540</b>	<b>23,459,671</b>	<b>32,458,458</b>	<b>37,890,646</b>	<b>42,866,469</b>

A 250 line per state mandatory reporting threshold applied to data through December 2004.  
 See additional notes following Chart 9.

**Chart 1**  
**Total High-Speed Lines**



**Chart 2**  
**High-Speed Lines by Technology as of June 30, 2005**

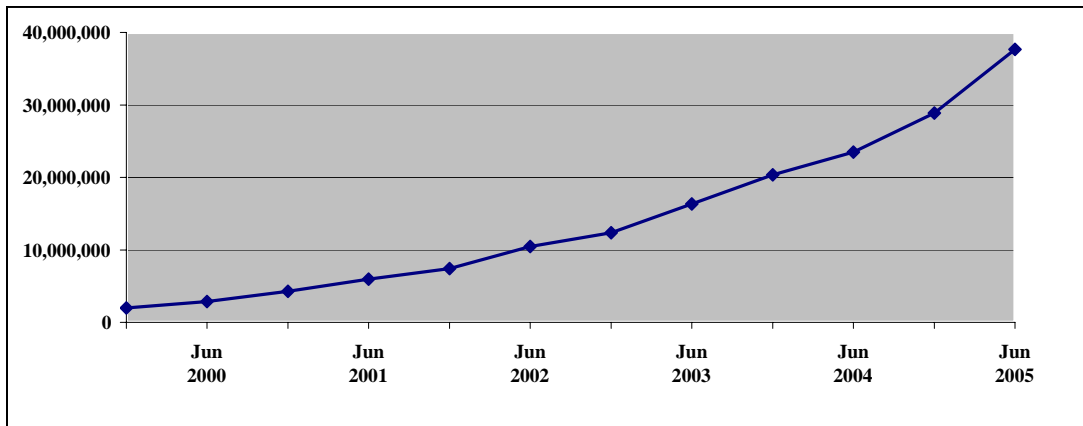


**Table 2**  
**Advanced Services Lines<sup>1</sup>**  
**(Over 200 kbps in both directions)**

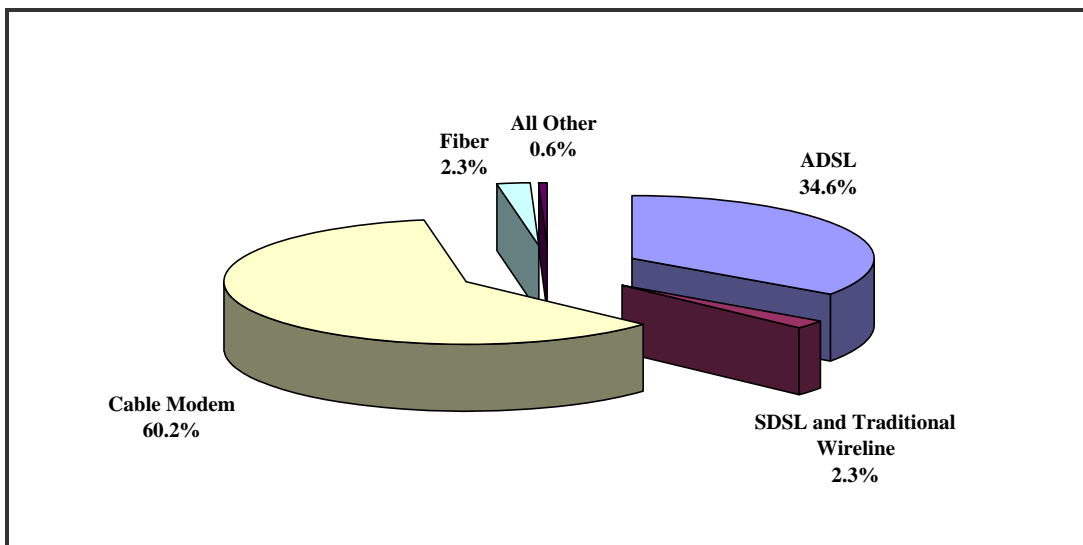
Technology <sup>2</sup>	2000	2001	2002	2003	2004		2005
	Jun	Jun	Jun	Jun	Jun	Dec	Jun
ADSL	326,816	998,883	1,852,879	2,536,368	3,768,019	5,695,548	13,039,040
SDSL and Traditional Wireline	758,594	1,088,066	1,186,680	1,215,713	1,407,121	1,468,566	870,419
SDSL	-	-	-	-	-	-	399,436
Traditional Wireline	-	-	-	-	-	-	470,983
Cable Modem	1,469,130	3,329,976	6,819,395	11,935,866	17,567,468	20,891,624	22,665,712
Fiber <sup>3</sup>	301,143	455,549	518,908	575,057	637,520	695,253	863,436
Satellite and Wireless	3,649	73,476	66,073	64,393	93,805	106,616	227,062
Satellite	-	-	-	-	-	-	11,281
Fixed Wireless	-	-	-	-	-	-	194,702
Mobile Wireless	-	-	-	-	-	-	21,079
Power Line and Other	-	-	-	-	-	-	4,174
<b>Total Lines</b>	<b>2,859,332</b>	<b>5,945,950</b>	<b>10,443,935</b>	<b>16,327,396</b>	<b>23,473,932</b>	<b>28,857,608</b>	<b>37,669,844</b>

A 250 line per state mandatory reporting threshold applied to data through December 2004.  
 See additional notes following Chart 9.

**Chart 3**  
**Advanced Services Lines**



**Chart 4**  
**Advanced Services Lines by Technology as of June 30, 2005**

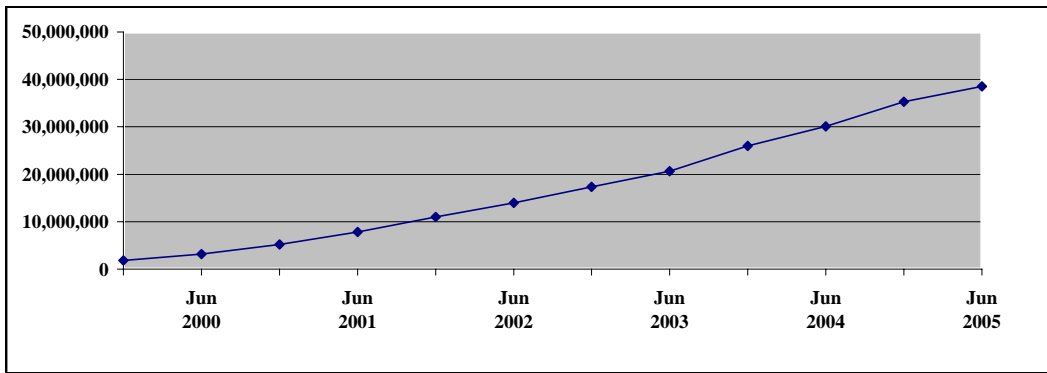


**Table 3**  
**Residential High-Speed Lines <sup>1</sup>**  
**(Over 200 kbps in at least one direction)**

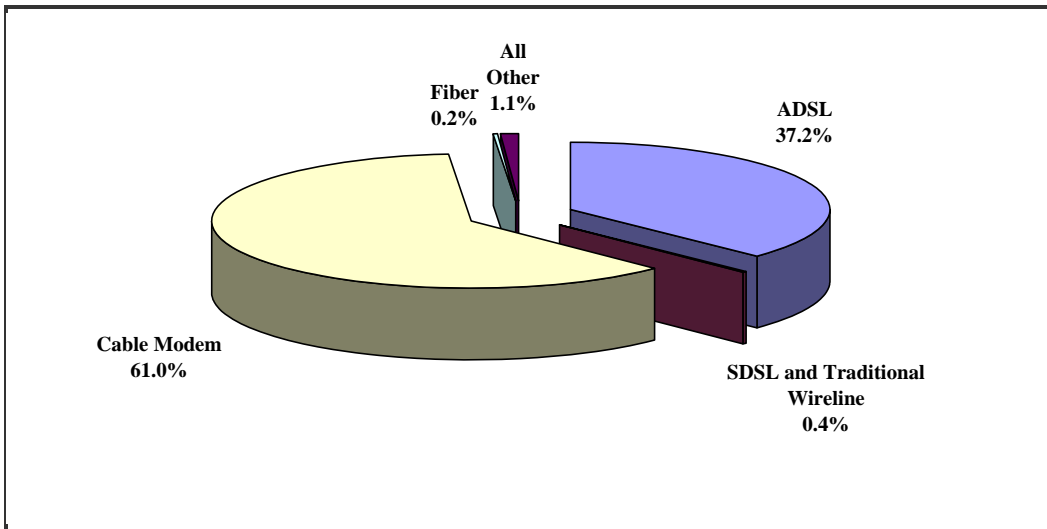
Technology <sup>2</sup>	2000	2001	2002	2003	2004		2005
	Jun	Jun	Jun	Jun	Jun	Dec	Jun
ADSL	772,272	2,490,740	4,395,033	6,429,938	10,759,495	13,119,326	14,326,121
SDSL and Traditional Wireline	111,490	138,307	223,599	250,372	393,049	419,215	168,707
SDSL	-	-	-	-	-	-	163,195
Traditional Wireline	-	-	-	-	-	-	5,511
Cable Modem	2,215,259	4,998,540	9,157,285	13,660,541	18,525,265	21,270,158	23,499,498
Fiber <sup>3</sup>	325	2,623	6,120	16,132	22,719	34,959	83,323
Satellite and Wireless	64,320	182,165	202,251	288,786	387,563	422,623	433,207
Satellite	-	-	-	-	-	-	265,378
Fixed Wireless	-	-	-	-	-	-	165,255
Mobile Wireless	-	-	-	-	-	-	2,574
Power Line and Other	-	-	-	-	-	-	4,447
<b>Total Lines</b>	<b>3,163,666</b>	<b>7,812,375</b>	<b>13,984,287</b>	<b>20,645,769</b>	<b>30,088,091</b>	<b>35,266,281</b>	<b>38,515,303</b>

A 250 line per state mandatory reporting threshold applied to data through December 2004.  
 Small business lines were included in totals through December 2004.  
 See additional notes following Chart 9.

**Chart 5**  
**Residential High-Speed Lines**



**Chart 6**  
**Residential High-Speed Lines by Technology as of June 30, 2005**



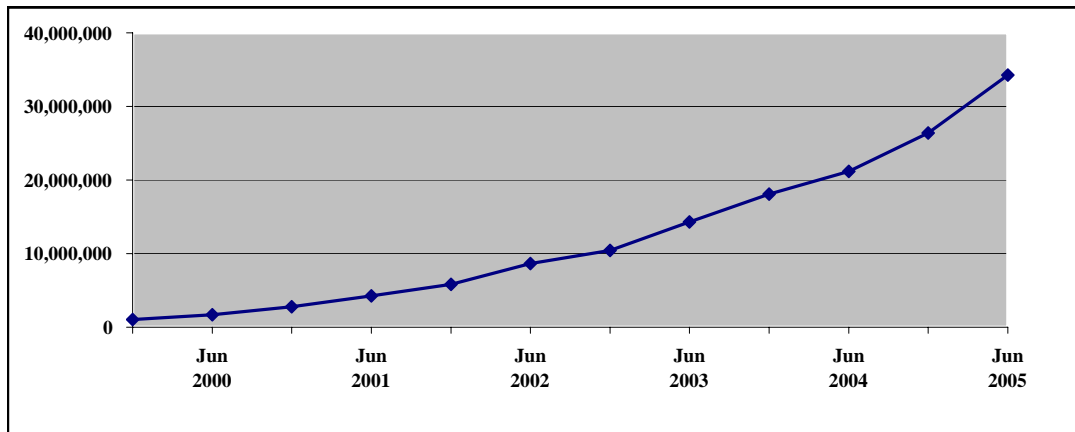


**Table 4**  
**Residential Advanced Services Lines<sup>1</sup>**  
**(Over 200 kbps in both directions)**

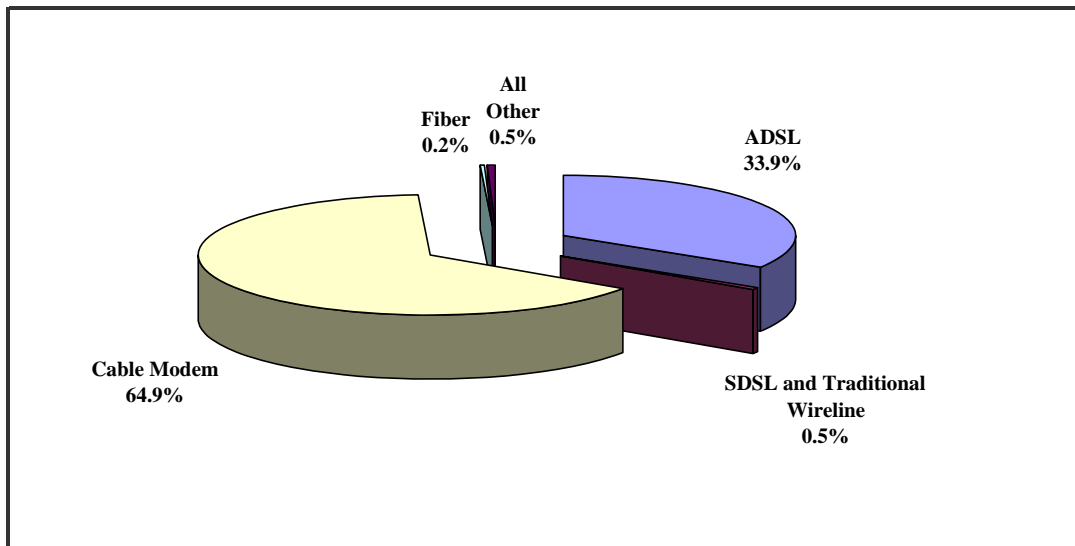
Technology <sup>2</sup>	2000	2001	2002	2003	2004		2005
	Jun	Jun	Jun	Jun	Jun	Dec	Jun
ADSL	195,324	916,364	1,580,575	2,071,779	3,174,022	5,026,367	11,611,808
SDSL and Traditional Wireline	111,490	138,307	223,599	250,372	393,049	419,215	161,196
SDSL	-	-	-	-	-	-	159,079
Traditional Wireline	-	-	-	-	-	-	2,118
Cable Modem	1,401,434	3,146,953	6,809,170	11,920,207	17,505,907	20,811,704	22,245,144
Fiber <sup>3</sup>	325	2,617	5,118	15,751	21,866	33,189	82,861
Satellite and Wireless	2,916	60,988	47,787	46,407	72,485	84,465	154,486
Satellite	-	-	-	-	-	-	2,495
Fixed Wireless	-	-	-	-	-	-	149,416
Mobile Wireless	-	-	-	-	-	-	2,574
Power Line and Other	-	-	-	-	-	-	3,916
<b>Total Lines</b>	<b>1,711,488</b>	<b>4,265,229</b>	<b>8,666,249</b>	<b>14,304,515</b>	<b>21,167,329</b>	<b>26,374,940</b>	<b>34,259,411</b>

A 250 line per state mandatory reporting threshold applied to data through December 2004.  
 Small business lines were included in totals through December 2004.  
 See additional notes following Chart 9.

**Chart 7**  
**Residential Advanced Services Lines**



**Chart 8**  
**Residential Advanced Services Lines by Technology as of June 30, 2005**

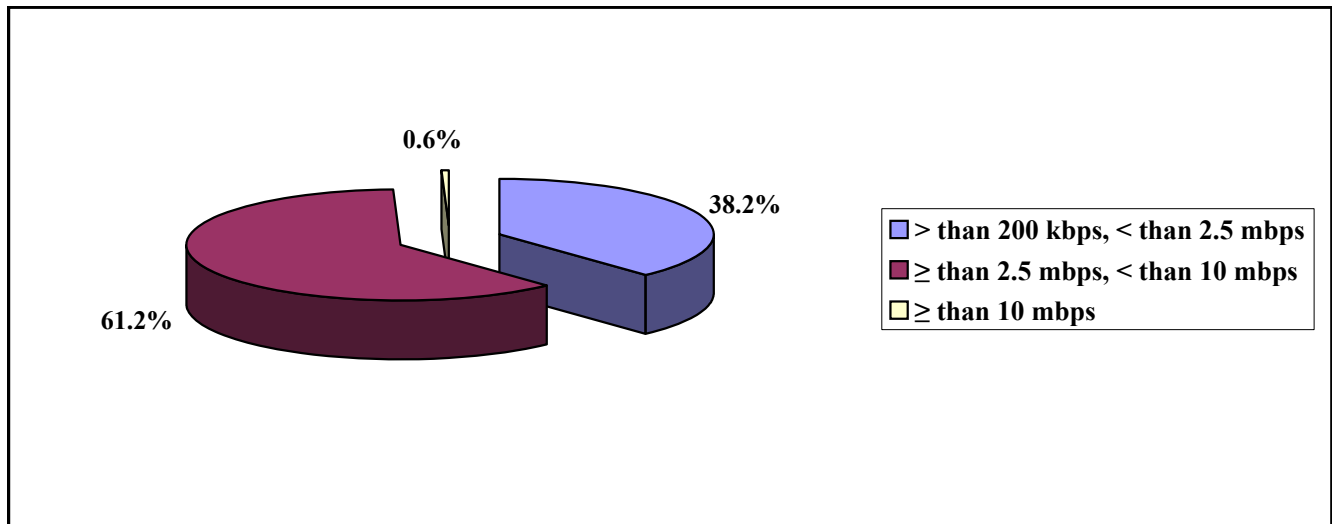


**Table 5**  
**High-Speed Lines by Information Transfer Rates <sup>1</sup>**  
**As of June 30, 2005**

Technology <sup>2</sup>	Exceeding 200 kbps in only one direction	Exceeding 200 kbps in both directions, and:				
		Greater than 200 kbps and less than 2.5 mbps in the faster direction	Greater than or equal to 2.5 mbps and less than 10 mbps in the faster direction	Greater than or equal to 10 mbps and less than 25 mbps in the faster direction	Greater than or equal to 25 mbps and less than 100 mbps in the faster direction	Greater than or equal to 100 mbps in the faster direction
ADSL	3,143,036	10,844,762	2,189,061	5,178	*	*
SDSL	24,280	393,970	5,214	*	*	0
Traditional Wireline	10,949	453,905	4,379	286	9,501	2,913
Cable Modem	1,273,196	2,297,006	20,222,612	144,218	*	*
Fiber	1,396	185,369	623,788	31,943	12,581	9,754
Satellite	366,010	11,281	0	0	0	0
Fixed Wireless	18,604	172,306	19,314	2,695	*	*
Mobile Wireless	358,457	21,078	*	0	0	0
Power Line and Other	698	3,576	*	*	*	*
<b>Total Lines</b>	<b>5,196,625</b>	<b>14,383,254</b>	<b>23,064,948</b>	<b>184,572</b>	<b>23,627</b>	<b>13,442</b>

\* Data withheld to maintain firm confidentiality.  
See notes following Chart 9.

**Chart 9**  
**High-Speed Lines by Information Transfer Rates in the Faster Direction**  
**(Includes only lines exceeding 200 kbps in both directions)**



## **Notes for Tables 1 - 5 and Charts 1 - 9.**

Advanced services lines, residential high-speed lines, and residential advanced services lines are estimated based on data reported on FCC Form 477. Therefore, figures may not add to totals due to rounding.

<sup>1</sup> High-speed lines are connections to end-user locations that deliver services at speeds exceeding 200 kbps in at least one direction. Advanced services lines, which are a subset of high-speed lines, are connections that deliver services at speeds exceeding 200 kbps in both directions. In Tables 2 and 4, we enumerate those reported high-speed lines that also qualify as advanced services lines. More detailed information about connection speeds is presented in Table 5. Line counts presented in this report are not adjusted for the number of persons at a single end-user location who have access to, or who use, the Internet-access services that are delivered over the high-speed connection to that location.

<sup>2</sup> The mutually exclusive types of technology are, respectively: Asymmetric digital subscriber line (ADSL) technologies, which provide speeds in one direction greater than speeds in the other direction; symmetric digital subscriber line (SDSL) technologies; traditional wireline technologies "other" than ADSL and SDSL, including traditional telephone company high-speed services that provide equivalent functionality; cable modem, including the typical hybrid fiber-coax (HFC) architecture of upgraded cable TV systems; optical fiber to the subscriber's premises (e.g., Fiber-to-the-Home, or FTTH); satellite and fixed and mobile terrestrial wireless systems, which use radio spectrum to communicate with a radio transmitter; and electric power line.

<sup>3</sup> Fiber line counts included electric power line through December 2004.

**Table 6**  
**High-Speed Lines by Type of Provider as of June 30, 2005**  
 (Over 200 kbps in at least one direction)

Technology <sup>1</sup>	Lines				Percent of Lines		
	RBOC <sup>2</sup>	Other ILEC	Non-ILEC <sup>3</sup>	Total	RBOC <sup>2</sup>	Other ILEC	Non-ILEC <sup>3</sup>
ADSL	13,436,360	2,134,127	611,589	16,182,076	83.0 %	13.2 %	3.8 %
SDSL	*	*	279,286	423,716	*	*	65.9
Traditional Wireline	*	*	190,625	481,932	*	*	39.6
Cable Modem	*	*	23,888,785	23,938,908	*	*	99.8
Fiber	*	*	644,459	864,831	*	*	74.5
Satellite	0	0	377,291	377,291	0.0	0.0	100.0
Fixed Wireless	0	9,516	203,790	213,306	0.0	4.5	95.5
Mobile Wireless	*	*	18,388	379,536	*	*	4.8
Power Line and Other	*	*	3,449	4,872	*	*	70.8
<b>Total Lines</b>	<b>14,334,505</b>	<b>2,314,301</b>	<b>26,217,662</b>	<b>42,866,469</b>	<b>33.4 %</b>	<b>5.4 %</b>	<b>61.2 %</b>

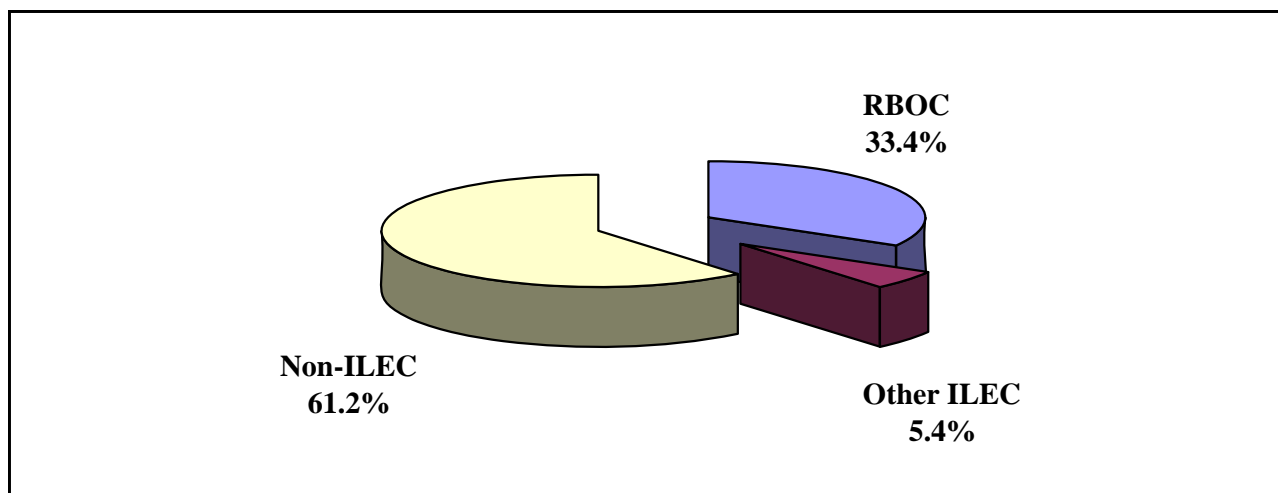
\* Data withheld to maintain firm confidentiality.

<sup>1</sup> The mutually exclusive types of technology are, respectively: Asymmetric digital subscriber line (ADSL) technologies, which provide speeds in one direction greater than speeds in the other direction; symmetric digital subscriber line (SDSL) technologies; traditional wireline technologies other than ADSL and SDSL, including traditional telephone company high-speed services that provide equivalent functionality; cable modem, including the typical hybrid fiber-coax (HFC) architecture of upgraded cable TV systems; optical fiber to the subscriber's premises (e.g., Fiber-to-the-Home, or FTTH); satellite and fixed and mobile terrestrial wireless systems, which use radio spectrum to communicate with a radio transmitter, and electric power line.

<sup>2</sup> RBOC lines include all high-speed lines reported by BellSouth, SBC, and Verizon, and all high-speed lines reported by Qwest in states in which Qwest has ILEC operations.

<sup>3</sup> High-speed lines reported by competitive local exchange carriers (CLECs) or cable TV operations that are affiliated with a local exchange carrier are included in Non-ILEC lines, except for any such lines that are included in RBOC lines.

**Chart 10**  
**Share of High-Speed Lines by Type of Provider**



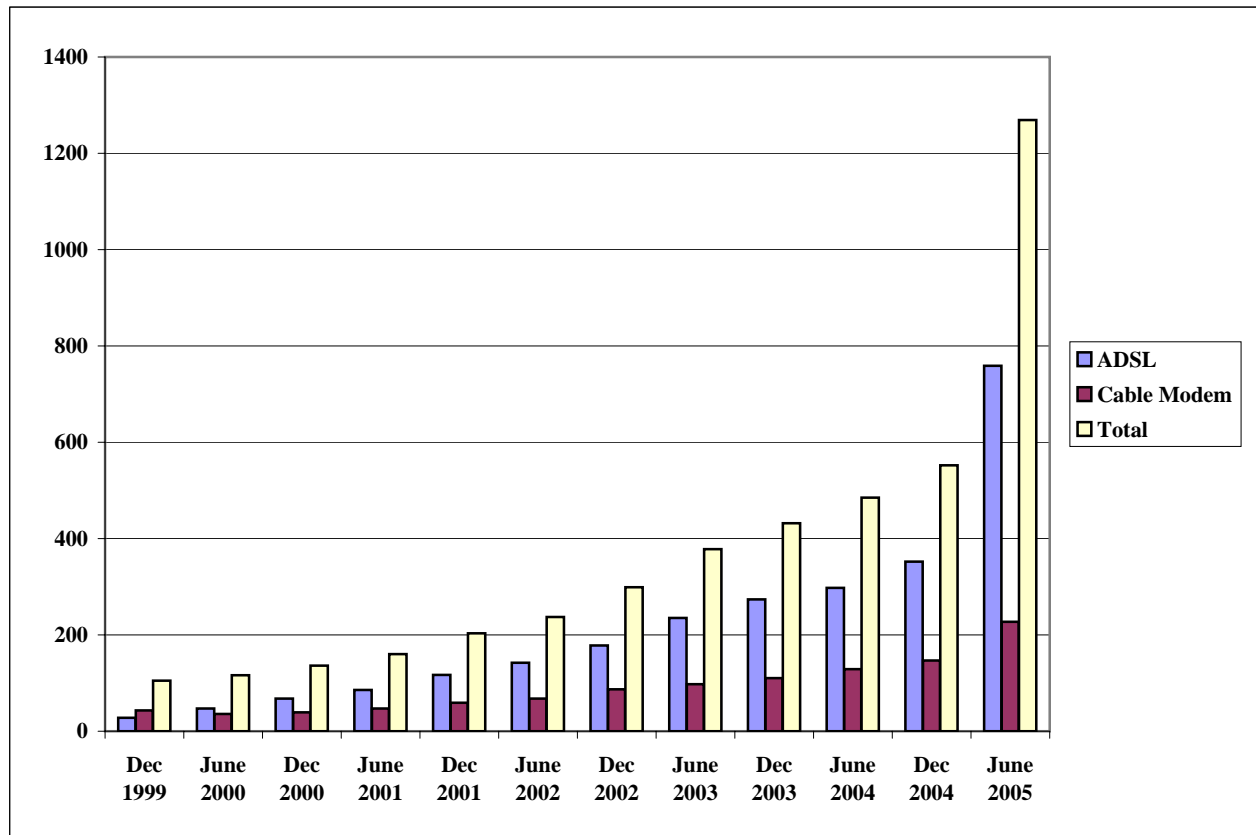
**Table 7**  
**Nationwide Number of Providers of High-Speed Lines by Technology as of June 30, 2005**  
**(Over 200 kbps in at least one direction)**

	ADSL	Cable Modem	All Other <sup>1</sup>	Total
Dec 1999	28	43	65	105
Jun 2000	47	36	75	116
Dec 2000	68	39	87	136
Jun 2001	86	47	98	160
Dec 2001	117	59	122	203
Jun 2002	142	68	138	237
Dec 2002	178	87	169	299
Jun 2003	235	98	217	378
Dec 2003	274	110	246	432
Jun 2004	298	129	281	485
Dec 2004	352	147	312	552
Jun 2005	758	227	779	1,270

A 250 line per state mandatory reporting threshold applied to data through December 2004.

<sup>1</sup> All other includes SDSL, traditional wireline, fiber, satellite, fixed and mobile wireless, and electric power line.

**Chart 11**  
**Historical Number of Providers of High-Speed Lines by Technology**



**Table 8**  
**Providers of High-Speed Lines by Technology as of June 30, 2005**  
**(Over 200 kbps in at least one direction)**

State	ADSL	SDSL	Traditional Wireline	Cable Modem	Fiber	Satellite	Fixed Wireless	Mobile Wireless	Power Line and Other	Total (Unduplicated)
Alabama	27	10	9	15	*	*	*	0	*	52
Alaska	7	5	*	4	*	*	5	*	0	16
American Samoa	*	*	0	0	0	0	*	0	0	*
Arizona	18	9	10	6	4	4	15	*	0	51
Arkansas	18	8	7	4	*	*	*	*	0	35
California	23	17	21	20	12	*	23	*	0	80
Colorado	21	12	15	10	7	*	18	*	0	54
Connecticut	7	12	7	8	*	*	0	*	0	25
Delaware	5	7	5	*	*	*	*	*	0	16
District of Columbia	*	7	9	*	6	*	*	*	0	18
Florida	19	16	15	9	10	*	11	*	0	52
Georgia	30	17	14	15	9	*	*	*	*	60
Guam	*	0	0	0	0	0	0	0	0	*
Hawaii	*	*	*	*	*	*	*	0	0	8
Idaho	16	9	9	4	5	*	10	0	*	36
Illinois	50	25	27	14	8	*	32	*	*	108
Indiana	38	15	16	12	11	4	18	*	*	72
Iowa	119	48	29	27	15	*	32	0	*	178
Kansas	41	14	13	23	9	*	21	*	0	77
Kentucky	25	10	9	14	4	*	6	*	*	53
Louisiana	18	10	8	6	7	*	*	*	0	38
Maine	11	8	6	5	4	*	*	0	0	26
Maryland	9	9	8	10	6	*	*	*	0	35
Massachusetts	12	13	14	7	5	*	*	*	0	38
Michigan	31	14	16	14	8	4	14	*	0	70
Minnesota	66	29	14	16	17	*	18	*	0	104
Mississippi	13	6	5	9	*	*	*	0	*	36
Missouri	35	19	12	15	5	4	21	*	*	76
Montana	19	8	7	4	*	*	8	0	*	33
Nebraska	34	13	6	13	*	*	24	0	0	65
Nevada	13	8	10	*	*	*	5	*	0	27
New Hampshire	12	12	11	5	4	*	*	0	0	32
New Jersey	12	13	13	5	7	*	*	*	0	33
New Mexico	21	6	5	5	*	4	8	*	0	35
New York	35	21	22	12	12	*	9	*	0	68
North Carolina	28	14	10	7	6	*	4	*	0	51
North Dakota	23	13	8	6	6	*	11	0	0	38
Ohio	30	20	14	20	11	4	17	*	*	76
Oklahoma	29	10	12	6	4	*	11	0	0	53
Oregon	32	13	13	7	8	*	9	*	0	54
Pennsylvania	35	17	19	19	12	*	8	*	0	70
Puerto Rico	*	0	*	*	*	*	0	0	0	6
Rhode Island	4	11	8	*	*	*	0	*	0	18
South Carolina	18	9	11	11	8	4	*	*	*	35
South Dakota	24	8	6	6	4	4	7	0	*	39
Tennessee	21	11	11	11	6	*	*	*	0	48
Texas	57	20	20	14	16	*	48	5	*	118
Utah	16	11	8	*	*	*	8	0	0	32
Vermont	9	7	6	*	*	*	*	0	0	21
Virgin Islands	*	*	*	0	0	*	0	0	0	4
Virginia	17	10	14	12	9	*	7	*	*	52
Washington	27	12	13	13	12	*	19	*	*	61
West Virginia	9	4	5	7	*	*	*	0	0	21
Wisconsin	42	30	11	11	8	*	14	*	0	75
Wyoming	7	7	5	*	*	*	5	0	0	21
Nationwide	758	270	206	227	138	6	423	13	18	1,270

\* Indicates one to three providers.

**Table 9**  
**High-Speed Lines by Technology as of June 30, 2005**  
(Over 200 kbps in at least one direction)

State	ADSL	SDSL	Traditional Wireline	Cable Modem	Fiber	Satellite	Fixed Wireless	Mobile Wireless	Power Line and Other	Total
Alabama	177,196	11,396	824	257,225	*	*	*	0	*	454,546
Alaska	38,530	7,272	*	*	*	*	1,125	*	0	95,763
American Samoa	*	*	0	0	0	0	*	0	0	*
Arizona	152,937	28,694	3,167	583,897	6,230	*	15,809	*	0	815,082
Arkansas	127,445	623	2,472	117,953	*	*	*	*	0	258,564
California	3,080,947	46,661	135,716	2,467,232	189,007	*	14,762	*	0	6,045,283
Colorado	268,114	6,306	8,563	383,154	8,592	*	10,089	*	0	695,883
Connecticut	*	4,048	5,262	372,346	*	*	0	*	0	684,597
Delaware	*	407	1,319	*	*	*	*	*	0	109,468
District of Columbia	*	3,416	1,560	*	13,802	*	*	*	0	126,609
Florida	1,284,507	9,209	18,662	1,559,592	33,208	*	12,483	*	0	2,979,706
Georgia	757,720	11,099	13,269	522,800	24,934	*	*	*	*	1,351,237
Guam	*	0	0	0	0	0	0	0	0	*
Hawaii	*	*	*	*	*	*	*	0	0	*
Idaho	62,691	605	688	78,185	330	*	3,295	0	*	148,964
Illinois	847,345	20,784	38,309	841,737	*	*	15,013	*	*	1,854,004
Indiana	303,725	4,226	10,107	397,481	11,661	*	4,244	*	*	745,511
Iowa	118,777	4,431	575	186,821	2,009	*	9,130	0	*	325,711
Kansas	136,402	4,352	3,600	258,856	2,859	*	7,328	*	0	419,938
Kentucky	143,083	1,596	1,689	217,302	527	*	372	*	*	370,337
Louisiana	190,603	4,094	1,036	328,675	3,253	*	*	*	0	536,339
Maine	52,032	2,004	2,603	116,203	938	*	*	0	0	176,816
Maryland	305,677	8,010	8,341	546,576	17,641	*	*	*	0	913,068
Massachusetts	*	8,986	8,746	826,351	25,777	*	*	*	0	1,235,672
Michigan	375,136	5,619	21,113	891,842	37,077	*	8,115	*	0	1,359,079
Minnesota	228,057	21,006	4,534	440,726	8,412	*	11,254	*	0	723,484
Mississippi	88,252	957	111	95,805	*	*	*	0	*	191,768
Missouri	341,618	7,971	8,818	323,270	11,247	*	3,231	*	*	710,812
Montana	46,786	2,191	453	35,625	*	*	3,072	0	*	90,563
Nebraska	66,268	2,127	251	177,074	*	*	6,227	0	0	253,974
Nevada	116,395	1,330	6,556	*	*	*	643	*	0	402,030
New Hampshire	54,233	2,362	2,204	176,033	*	*	*	0	0	238,502
New Jersey	443,808	10,381	13,820	1,107,751	51,954	*	*	*	0	1,654,477
New Mexico	82,062	834	496	78,035	*	*	7,991	*	0	175,303
New York	736,769	36,286	27,189	2,216,153	131,463	*	417	*	0	3,188,033
North Carolina	417,163	29,580	8,092	762,203	1,690	*	2,683	*	0	1,237,877
North Dakota	26,846	4,242	191	20,551	*	*	1,962	0	0	56,057
Ohio	448,657	6,097	21,850	961,119	24,130	*	12,722	*	*	1,505,272
Oklahoma	190,005	2,360	6,985	233,993	*	*	1,326	0	0	449,631
Oregon	197,927	7,579	4,666	336,553	3,143	*	2,726	*	0	561,867
Pennsylvania	541,274	24,513	11,421	965,946	26,815	*	1,279	*	0	1,602,716
Puerto Rico	*	0	*	*	*	*	0	0	0	66,484
Rhode Island	*	1,408	1,519	*	*	*	0	*	0	186,743
South Carolina	157,876	5,681	5,125	288,102	1,640	*	*	*	*	464,917
South Dakota	20,632	2,378	80	32,991	95	*	3,680	0	*	61,856
Tennessee	237,180	4,203	3,738	422,063	2,988	*	*	*	0	682,970
Texas	1,301,277	17,826	24,874	1,467,804	83,677	*	28,291	*	*	2,989,919
Utah	129,607	4,102	2,117	*	*	*	4,867	0	0	261,135
Vermont	35,281	1,457	1,046	*	*	*	*	0	0	82,259
Virgin Islands	*	*	*	0	0	*	0	0	0	2,183
Virginia	308,947	10,807	10,287	748,694	22,500	*	3,723	*	*	1,134,059
Washington	363,796	7,444	8,010	585,125	16,193	*	4,704	*	*	1,000,634
West Virginia	53,292	2,263	1,604	117,538	*	*	*	0	0	178,242
Wisconsin	243,763	8,551	13,260	446,840	9,155	*	960	*	0	732,706
Wyoming	23,769	1,729	104	*	*	*	1,639	0	0	55,884
Nationwide	16,182,076	423,716	481,932	23,938,908	864,831	377,291	213,306	379,536	4,872	42,866,469

\* Data withheld to maintain firm confidentiality.

**Table 10**  
**High-Speed Lines by State**  
**(Over 200 kbps in at least one direction)**

State	1999	2000		2001		2002		2003		2004		2005
	Dec	Jun	Dec	Jun	Dec	Jun	Dec	Jun	Dec	Jun	Dec	Jun
Alabama	19,796	32,756	63,334	86,234	138,979	172,365	227,888	283,946	352,215	350,691	410,054	454,546
Alaska	*	*	934	20,906	50,277	46,791	55,975	61,121	71,778	88,076	110,416	95,763
American Samoa	0	0	0	0	0	0	0	0	0	*	0	*
Arizona	58,825	111,678	153,500	158,122	251,709	308,621	370,939	445,179	536,465	623,242	750,882	815,082
Arkansas	8,155	15,539	28,968	40,803	66,537	84,235	100,280	128,311	158,197	188,433	220,324	258,564
California	547,179	910,006	1,386,625	1,705,814	2,041,276	2,598,491	3,035,756	3,456,681	4,165,658	4,693,189	5,382,849	6,045,283
Colorado	36,726	64,033	104,534	147,220	177,419	243,810	298,265	344,154	425,431	522,028	622,611	695,883
Connecticut	36,488	63,772	111,792	149,057	191,257	236,490	307,860	368,186	444,525	520,306	603,287	684,597
Delaware	1,558	3,660	7,492	12,771	26,601	36,619	51,100	55,030	69,010	75,593	92,889	109,468
District of Columbia	13,288	16,926	27,757	39,101	43,278	55,197	64,310	70,715	88,683	96,078	115,110	126,609
Florida	190,700	244,678	460,795	651,167	911,261	1,119,693	1,405,976	1,653,537	1,986,938	2,258,302	2,683,058	2,979,706
Georgia	75,870	130,292	203,855	302,598	420,206	512,135	654,833	768,060	927,398	1,061,819	1,229,110	1,351,237
Guam	0	0	0	0	0	0	0	0	0	*	*	*
Hawaii	*	*	*	*	*	*	*	*	*	*	*	*
Idaho	*	8,070	15,908	20,233	18,445	43,119	54,963	64,353	80,455	99,845	126,121	148,964
Illinois	77,672	166,933	242,239	350,241	422,706	553,442	734,171	871,469	1,088,770	1,305,091	1,534,653	1,854,004
Indiana	20,059	49,702	60,494	80,364	123,704	159,392	205,946	237,030	419,131	519,514	641,607	745,511
Iowa	19,258	49,159	58,199	72,583	82,024	102,932	121,053	162,257	191,464	229,811	266,794	325,711
Kansas	26,179	42,679	68,743	101,734	125,963	149,733	193,568	248,796	284,911	323,217	387,300	419,938
Kentucky	23,570	24,237	32,731	39,297	67,870	90,284	99,265	121,594	243,005	300,704	360,903	370,337
Louisiana	28,133	43,294	74,950	121,685	164,760	207,257	262,093	315,690	368,528	420,926	486,093	536,339
Maine	19,878	17,864	26,266	38,149	49,523	61,406	73,061	85,615	99,200	124,191	142,735	176,816
Maryland	52,749	71,005	124,465	181,021	260,634	316,666	391,397	469,826	578,004	668,259	796,110	913,068
Massachusetts	114,116	185,365	289,447	357,256	505,819	583,627	679,084	821,135	919,638	1,024,732	1,144,146	1,235,672
Michigan	81,223	135,318	198,230	395,583	433,858	538,416	640,766	736,755	848,837	955,242	1,097,230	1,359,079
Minnesota	38,268	65,272	117,283	148,012	199,856	273,907	335,562	400,370	485,839	567,365	651,934	723,484
Mississippi	*	6,514	12,305	21,517	35,586	57,595	80,922	96,111	116,495	139,960	168,971	191,768
Missouri	23,347	46,903	100,403	123,915	181,794	224,282	260,752	366,978	439,067	543,189	591,281	710,812
Montana	*	*	7,378	10,446	13,037	17,969	20,090	28,023	39,240	57,650	72,880	90,563
Nebraska	36,748	44,188	54,085	55,188	71,451	92,849	117,219	141,172	173,524	199,282	216,780	253,974
Nevada	23,514	40,582	59,879	78,535	109,850	138,042	159,179	209,732	247,442	291,291	343,945	402,030
New Hampshire	22,807	33,045	42,364	55,658	71,200	86,200	102,590	118,879	149,180	168,652	215,862	238,502
New Jersey	101,832	144,203	285,311	428,514	590,192	693,036	839,095	967,840	1,106,541	1,241,222	1,472,766	1,654,477
New Mexico	*	2,929	28,497	20,482	31,940	44,942	57,956	71,969	91,736	115,850	145,889	175,303
New York	186,504	342,743	603,487	893,032	1,199,159	1,460,894	1,725,296	1,997,340	2,262,804	2,464,342	2,808,553	3,188,033
North Carolina	57,881	81,998	136,703	205,616	357,906	461,736	594,039	681,304	842,130	966,404	1,120,611	1,237,877
North Dakota	*	2,437	4,227	6,277	6,082	14,164	20,024	25,474	31,571	39,274	47,957	56,057
Ohio	160,792	156,980	230,525	358,965	436,766	580,078	710,355	821,935	977,886	1,157,787	1,347,040	1,505,272
Oklahoma	96,730	163,703	95,138	92,947	114,931	151,213	196,556	234,823	286,510	335,686	391,781	449,631
Oregon	27,062	44,186	76,839	93,242	158,048	199,549	275,449	318,460	380,507	439,447	510,628	561,867
Pennsylvania	71,926	79,892	176,670	263,236	376,439	516,488	631,717	772,276	971,170	1,141,763	1,405,317	1,602,716
Puerto Rico	*	*	*	*	*	*	22,732	32,063	31,100	43,091	61,554	66,484
Rhode Island	*	20,628	30,919	49,215	64,293	72,553	89,821	105,610	122,255	143,250	165,362	186,743
South Carolina	25,229	32,824	63,914	96,839	135,165	175,088	222,980	262,868	310,906	354,877	415,844	464,917
South Dakota	*	3,516	2,839	5,448	9,585	12,555	18,060	22,016	28,557	34,026	40,286	61,856
Tennessee	66,307	87,317	122,391	152,510	237,401	294,573	369,370	414,713	471,341	535,899	630,308	682,970
Texas	152,518	276,087	522,538	646,839	840,665	1,050,511	1,349,628	1,610,935	1,924,664	2,246,862	2,597,539	2,989,919
Utah	11,635	19,612	35,970	55,103	72,977	93,928	121,744	135,007	162,905	198,346	238,205	261,135
Vermont	*	1,551	7,773	16,230	21,795	29,990	32,814	39,773	44,724	56,033	72,400	82,259
Virgin Islands	0	*	*	*	*	*	*	*	*	*	*	2,183
Virginia	51,305	72,436	139,915	212,808	292,772	360,722	463,455	567,513	716,839	833,302	998,261	1,134,059
Washington	71,930	118,723	195,628	227,066	335,667	422,348	485,063	577,378	672,247	775,027	889,368	1,000,634
West Virginia	*	1,835	6,498	16,697	32,848	58,209	78,980	90,173	100,937	127,283	155,397	178,242
Wisconsin	18,599	34,262	76,257	127,755	182,395	257,099	335,991	401,995	488,620	565,160	649,630	732,706
Wyoming	*	*	*	*	7,856	10,990	14,696	17,507	24,818	35,464	45,602	55,884
Nationwide	2,754,286	4,367,434	7,069,874	9,616,341	12,792,812	16,202,540	19,881,549	23,459,671	28,230,149	32,458,458	37,890,646	42,866,469

\* Data withheld to maintain firm confidentiality.



**Table 11**  
**ADSL High-Speed Lines by State**  
**(Over 200 kbps in at least one direction)**

State	1999	2000		2001		2002		2003		2004		2005
	Dec	Jun	Dec	Jun	Dec	Jun	Dec	Jun	Dec	Jun	Dec	Jun
Alabama	*	*	12,320	*	34,785	45,350	56,860	70,639	112,274	112,059	135,282	177,196
Alaska	0	0	0	*	7,975	11,337	14,295	14,013	17,184	20,686	33,690	38,530
American Samoa	0	0	0	0	0	0	0	0	0	0	0	*
Arizona	*	*	32,395	39,828	53,489	68,280	72,324	77,368	87,263	108,735	136,260	152,937
Arkansas	*	*	*	*	22,240	28,477	35,594	44,801	60,435	80,981	100,987	127,445
California	122,855	373,574	622,894	735,677	928,345	1,214,543	1,485,309	1,715,998	2,065,780	2,342,186	2,700,380	3,080,947
Colorado	*	*	42,810	52,617	70,615	100,197	113,040	126,189	155,137	201,523	248,285	268,114
Connecticut	*	*	22,348	30,142	41,261	61,093	100,722	124,742	167,439	204,034	244,509	*
Delaware	*	*	*	*	*	*	*	*	*	10,572	16,490	*
District of Columbia	*	*	*	16,313	*	28,723	35,466	39,471	44,440	44,231	51,127	*
Florida	*	37,806	115,133	170,702	306,015	391,188	521,623	644,621	786,275	928,402	1,110,846	1,284,507
Georgia	*	*	56,588	106,649	172,556	237,922	305,004	368,372	452,567	535,088	636,170	757,720
Guam	0	0	0	0	0	0	0	0	0	*	*	*
Hawaii	*	*	*	*	*	*	*	*	*	*	*	*
Idaho	*	*	*	*	13,643	16,108	17,930	19,382	24,503	35,166	48,500	62,691
Illinois	3,150	12,812	48,278	89,080	110,448	195,560	300,497	363,733	466,052	588,906	707,771	847,345
Indiana	*	*	6,442	2,375	22,385	36,685	63,463	85,968	129,341	179,942	239,454	303,725
Iowa	*	*	*	9,532	13,193	18,751	29,161	39,386	48,226	65,580	88,707	118,777
Kansas	0	*	14,281	*	23,564	28,713	39,315	50,839	68,044	88,246	112,063	136,402
Kentucky	5,690	*	16,327	20,256	43,191	55,454	55,254	75,316	94,126	119,709	148,963	143,083
Louisiana	*	*	22,788	37,444	58,019	73,120	86,359	100,919	116,047	136,406	163,021	190,603
Maine	0	*	*	6,877	*	*	8,432	11,052	17,785	31,577	41,000	52,032
Maryland	*	*	*	51,051	79,997	95,439	115,687	126,873	152,906	192,139	249,379	305,677
Massachusetts	*	15,802	53,700	82,699	125,630	147,139	181,426	207,344	230,333	253,576	302,537	*
Michigan	786	*	25,482	41,428	52,505	80,588	111,182	135,360	175,202	236,310	299,861	375,136
Minnesota	*	25,975	40,870	51,640	67,527	86,184	98,316	115,244	134,914	159,137	188,181	228,057
Mississippi	*	*	*	*	*	*	*	33,650	41,740	52,892	71,993	88,252
Missouri	*	*	38,759	53,250	68,186	84,642	114,861	138,046	182,119	233,916	282,904	341,618
Montana	*	*	1,760	2,842	4,272	7,108	6,549	13,119	19,417	28,238	36,183	46,786
Nebraska	*	*	*	9,293	13,637	11,547	16,117	18,285	25,599	35,180	46,283	66,268
Nevada	*	*	10,023	*	17,598	24,073	36,662	47,934	61,014	74,879	93,145	116,395
New Hampshire	*	*	3,339	5,651	9,618	11,781	14,630	17,823	23,555	31,843	42,835	54,233
New Jersey	*	*	59,332	102,430	151,829	172,472	197,615	211,540	251,754	301,789	372,949	443,808
New Mexico	*	*	*	7,578	*	18,224	22,607	26,948	36,546	51,375	68,359	82,062
New York	9,307	41,656	124,146	197,135	285,814	338,229	391,686	438,241	497,071	536,980	641,321	736,769
North Carolina	*	8,662	23,815	41,332	65,582	89,680	124,031	161,642	210,958	264,248	340,520	417,163
North Dakota	*	*	*	*	4,849	6,575	8,826	11,593	14,034	19,412	23,874	26,846
Ohio	*	33,603	55,046	87,567	112,527	151,612	205,140	243,689	303,969	369,386	455,336	448,657
Oklahoma	*	*	*	31,321	39,978	50,617	65,378	78,248	106,031	129,996	158,490	190,005
Oregon	*	19,989	31,644	25,877	57,899	68,747	82,555	95,654	117,253	142,483	171,861	197,927
Pennsylvania	7,377	18,313	60,083	89,595	136,829	162,258	200,501	230,322	284,870	346,720	436,503	541,274
Puerto Rico	0	0	0	*	*	*	*	*	*	*	*	*
Rhode Island	0	*	*	*	*	*	*	*	*	*	*	*
South Carolina	*	*	5,168	9,704	18,686	26,184	38,293	52,667	77,599	98,583	128,042	157,876
South Dakota	*	*	*	1,652	2,869	4,389	6,308	8,637	11,635	15,230	18,357	20,632
Tennessee	*	*	13,705	22,902	42,571	57,984	74,034	92,777	116,785	147,922	193,879	237,180
Texas	*	73,117	158,513	197,668	300,752	368,796	486,833	597,447	772,697	930,997	1,104,776	1,301,277
Utah	*	*	17,352	23,476	33,306	47,637	57,025	65,648	76,466	95,656	113,033	129,607
Vermont	0	*	*	*	*	9,409	12,062	15,072	18,646	22,519	28,524	35,281
Virgin Islands	0	0	0	*	*	*	*	*	*	*	*	*
Virginia	7,425	9,510	26,750	39,114	65,298	75,524	96,805	114,797	144,584	196,568	254,355	308,947
Washington	*	52,345	79,130	64,812	140,273	172,652	200,189	225,377	262,149	300,804	338,321	363,796
West Virginia	0	*	*	*	*	*	*	*	*	*	39,566	53,292
Wisconsin	*	1,063	8,623	17,800	28,233	42,052	64,521	84,100	120,236	159,167	202,882	243,763
Wyoming	*	*	*	*	*	*	*	5,503	8,467	13,510	20,402	23,769
Nationwide	369,792	951,583	1,977,101	2,693,834	3,947,808	5,101,493	6,471,716	7,675,114	9,509,442	11,398,199	13,817,280	16,182,076

\* Data withheld to maintain firm confidentiality.

**Table 12**  
**Coaxial Cable High-Speed Lines by State**  
**(Over 200 kbps in at least one direction)**

State	1999	2000		2001		2002		2003		2004		2005
	Dec	Jun	Dec	Jun	Dec	Jun	Dec	Jun	Dec	Jun	Dec	Jun
Alabama	8,415	17,164	36,432	47,325	83,933	104,990	144,259	181,338	207,397	206,208	233,004	257,225
Alaska	0	0	0	0	*	*	*	*	*	*	*	*
American Samoa	0	0	0	0	0	0	0	0	0	0	0	0
Arizona	*	*	*	*	151,916	194,431	251,373	319,272	396,960	457,869	549,613	583,897
Arkansas	*	*	*	*	*	*	*	*	86,441	95,528	106,055	117,953
California	221,472	297,415	476,544	609,174	786,789	1,013,503	1,179,204	1,395,435	1,706,217	1,929,080	2,213,138	2,467,232
Colorado	*	*	*	*	*	*	*	181,766	231,075	280,909	332,927	383,154
Connecticut	28,702	47,127	78,234	106,019	137,003	160,913	192,155	227,658	260,415	299,176	341,146	372,346
Delaware	*	*	*	*	*	*	*	*	*	*	*	*
District of Columbia	*	*	*	*	*	*	*	*	*	*	*	*
Florida	110,000	129,830	255,978	372,190	486,977	595,806	741,426	867,513	1,050,062	1,171,641	1,384,059	1,559,592
Georgia	18,114	48,947	75,474	109,922	156,142	183,886	243,142	289,922	361,127	407,038	468,027	522,800
Guam	0	0	0	0	0	0	0	0	0	0	0	0
Hawaii	*	*	*	*	0	*	*	*	*	*	*	*
Idaho	0	*	*	*	*	*	*	*	*	*	*	78,185
Illinois	*	83,737	126,490	144,872	204,202	242,394	316,169	383,069	494,110	589,025	691,214	841,737
Indiana	7,412	33,431	37,052	56,441	78,837	98,414	114,237	122,338	257,023	304,866	364,887	397,481
Iowa	14,027	42,081	48,008	59,253	63,788	77,592	83,994	111,748	131,073	151,299	163,293	186,821
Kansas	*	*	48,541	74,337	94,047	111,615	142,563	181,437	199,369	209,233	246,185	258,856
Kentucky	*	*	*	*	*	12,867	22,113	23,672	124,535	154,567	183,726	217,302
Louisiana	*	*	*	64,219	88,851	115,198	*	189,920	227,047	257,405	291,857	328,675
Maine	*	*	*	*	*	*	*	*	*	*	95,182	116,203
Maryland	*	42,412	65,668	97,466	143,174	181,864	241,264	306,442	385,408	433,754	501,144	546,576
Massachusetts	*	148,233	210,019	243,670	339,244	391,391	453,473	564,961	638,441	704,956	778,595	826,351
Michigan	51,111	94,586	130,296	301,842	329,697	402,642	472,405	543,336	611,131	656,263	733,511	891,842
Minnesota	14,346	30,485	64,215	80,259	113,900	166,323	212,126	255,988	317,853	358,477	404,135	440,726
Mississippi	*	*	*	*	12,998	27,872	40,276	50,234	61,163	72,271	80,210	95,805
Missouri	*	16,482	42,255	51,733	89,370	110,026	117,403	191,658	221,917	266,493	264,917	323,270
Montana	0	*	*	*	*	*	*	*	*	22,856	29,278	35,625
Nebraska	*	*	*	37,168	49,939	73,306	92,261	111,903	130,319	142,555	155,796	177,074
Nevada	*	*	*	*	*	*	*	*	*	*	*	*
New Hampshire	*	*	*	*	*	*	*	95,612	118,456	129,024	165,188	176,033
New Jersey	*	*	*	*	375,362	454,750	578,337	690,620	781,898	862,834	1,015,944	1,107,751
New Mexico	0	0	*	*	*	*	*	38,004	47,721	56,369	68,143	78,035
New York	110,382	*	377,521	564,423	780,473	967,949	1,185,233	1,401,322	1,597,556	1,752,189	1,976,663	2,216,153
North Carolina	24,200	42,713	73,092	115,949	239,107	313,884	406,024	454,272	559,276	623,414	691,904	762,203
North Dakota	0	*	*	*	*	*	*	10,066	13,030	14,428	17,307	20,551
Ohio	*	*	127,692	213,606	264,031	363,675	435,404	508,458	597,442	709,145	804,712	961,119
Oklahoma	*	*	*	*	*	*	*	*	*	*	*	233,993
Oregon	*	*	*	*	*	*	165,343	197,794	233,737	262,513	301,586	336,553
Pennsylvania	34,878	38,340	85,104	131,119	190,915	300,840	376,611	482,471	621,381	724,101	885,925	965,946
Puerto Rico	0	0	0	0	0	0	*	*	*	*	*	*
Rhode Island	*	*	*	*	*	*	*	*	*	*	*	*
South Carolina	15,176	20,190	44,812	68,487	96,559	126,598	159,944	185,083	209,889	228,648	252,646	288,102
South Dakota	0	*	*	*	*	*	7,916	9,156	11,042	12,114	14,103	32,991
Tennessee	*	*	77,760	96,119	158,120	199,121	252,596	277,579	308,630	340,883	386,258	422,063
Texas	76,520	137,670	227,070	328,900	427,324	577,233	740,469	888,595	1,019,623	1,162,797	1,320,225	1,467,804
Utah	*	*	*	*	*	*	*	*	*	*	*	*
Vermont	*	*	*	*	*	*	*	*	*	*	*	*
Virgin Islands	0	0	0	0	0	0	0	0	0	0	0	0
Virginia	23,140	40,337	78,585	131,553	182,591	238,300	320,154	404,616	517,924	579,580	681,914	748,694
Washington	*	*	*	*	*	217,644	246,627	313,915	367,321	426,487	498,934	585,125
West Virginia	*	*	*	*	*	48,858	65,542	73,263	78,018	97,463	108,585	117,538
Wisconsin	*	*	*	*	*	189,585	243,043	287,519	334,394	371,106	408,512	446,840
Wyoming	0	0	*	*	*	*	*	*	*	*	*	*
Nationwide	1,411,977	2,284,491	3,582,874	5,184,141	7,059,598	9,172,895	11,369,087	13,684,225	16,446,322	18,592,636	21,357,400	23,938,908

\* Data withheld to maintain firm confidentiality.

**Table 13**  
**High-Speed Lines by Type of User as of June 30, 2005**  
**(Over 200 kbps in at least one direction)**

<b>State</b>	<b>Residential</b>	<b>Business</b>	<b>Total</b>
Alabama	408,937	45,609	454,546
Alaska	80,556	15,207	95,763
American Samoa	*	*	*
Arizona	738,322	76,760	815,082
Arkansas	236,325	22,239	258,564
California	5,378,549	666,734	6,045,283
Colorado	623,716	72,167	695,883
Connecticut	641,329	43,268	684,597
Delaware	100,381	9,087	109,468
District of Columbia	94,320	32,289	126,609
Florida	2,602,957	376,749	2,979,706
Georgia	1,142,806	208,431	1,351,237
Guam	*	*	*
Hawaii	*	*	*
Idaho	134,698	14,266	148,964
Illinois	1,658,639	195,365	1,854,004
Indiana	678,417	67,094	745,511
Iowa	293,824	31,887	325,711
Kansas	385,369	34,569	419,938
Kentucky	330,975	39,362	370,337
Louisiana	475,284	61,055	536,339
Maine	165,428	11,388	176,816
Maryland	822,436	90,632	913,068
Massachusetts	1,123,606	112,066	1,235,672
Michigan	1,256,759	102,320	1,359,079
Minnesota	655,837	67,647	723,484
Mississippi	165,095	26,673	191,768
Missouri	653,590	57,222	710,812
Montana	79,658	10,905	90,563
Nebraska	228,965	25,009	253,974
Nevada	360,627	41,403	402,030
New Hampshire	223,102	15,400	238,502
New Jersey	1,479,635	174,842	1,654,477
New Mexico	155,493	19,810	175,303
New York	2,833,478	354,555	3,188,033
North Carolina	1,124,284	113,593	1,237,877
North Dakota	47,278	8,779	56,057
Ohio	1,395,062	110,210	1,505,272
Oklahoma	409,046	40,585	449,631
Oregon	505,260	56,607	561,867
Pennsylvania	1,445,509	157,207	1,602,716
Puerto Rico	49,325	17,159	66,484
Rhode Island	177,393	9,350	186,743
South Carolina	414,608	50,309	464,917
South Dakota	51,283	10,573	61,856
Tennessee	613,574	69,396	682,970
Texas	2,737,826	252,093	2,989,919
Utah	231,418	29,717	261,135
Vermont	76,895	5,364	82,259
Virgin Islands	2,143	40	2,183
Virginia	1,022,318	111,741	1,134,059
Washington	900,741	99,893	1,000,634
West Virginia	166,454	11,788	178,242
Wisconsin	682,073	50,633	732,706
Wyoming	49,585	6,299	55,884
Nationwide	38,515,303	4,351,166	42,866,469

\* Data withheld to maintain firm confidentiality.

**Table 14**  
**Percentage of Residential End-User Premises with Access to High-Speed Services**

<b>State</b>	<b>xDSL Availability Where ILECs Offer Local Telephone Service</b>	<b>Cable Modem Availability Where Cable Systems Offer Cable TV Service</b>
Alabama	76%	91%
Alaska	72%	*
American Samoa	*	0%
Arizona	61%	85%
Arkansas	57%	65%
California	84%	97%
Colorado	74%	87%
Connecticut	*	83%
Delaware	*	*
District of Columbia	*	*
Florida	85%	94%
Georgia	77%	88%
Guam	*	0%
Hawaii	*	*
Idaho	68%	78%
Illinois	77%	97%
Indiana	71%	93%
Iowa	77%	85%
Kansas	77%	87%
Kentucky	60%	87%
Louisiana	85%	94%
Maine	70%	83%
Maryland	76%	94%
Massachusetts	*	98%
Michigan	65%	98%
Minnesota	76%	89%
Mississippi	73%	77%
Missouri	68%	89%
Montana	71%	21%
Nebraska	52%	91%
Nevada	81%	*
New Hampshire	65%	96%
New Jersey	87%	97%
New Mexico	72%	72%
New York	81%	98%
North Carolina	75%	95%
North Dakota	81%	79%
Ohio	73%	98%
Oklahoma	72%	80%
Oregon	77%	90%
Pennsylvania	74%	89%
Puerto Rico	*	*
Rhode Island	*	*
South Carolina	73%	79%
South Dakota	73%	62%
Tennessee	80%	95%
Texas	71%	87%
Utah	78%	*
Vermont	64%	*
Virgin Islands	*	0%
Virginia	66%	95%
Washington	75%	92%
West Virginia	57%	82%
Wisconsin	75%	97%
Wyoming	70%	*
Nationwide	76%	91%

\* Data withheld to maintain firm confidentiality.

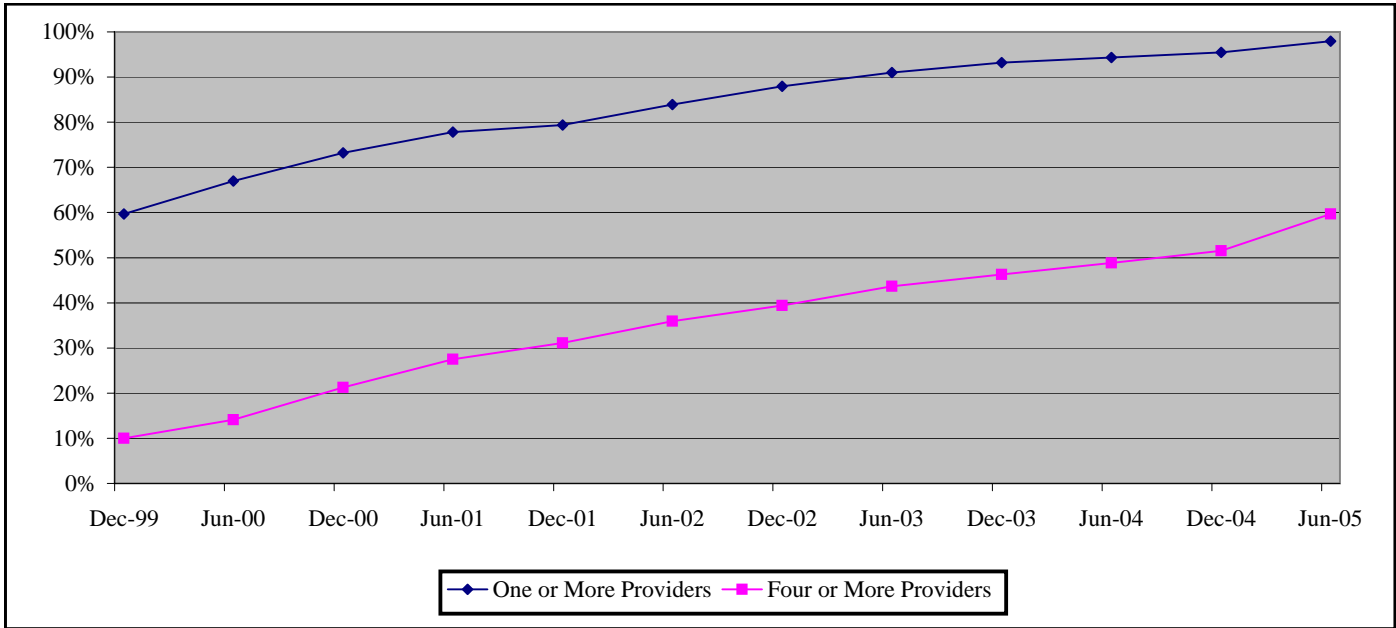
xDSL includes both asymmetric and symmetric DSL. Each state-specific estimate is a weighted average of the availability percentages that ILECs or cable system operators report for the areas they serve. Reported xDSL availability is weighted by ILEC end-user switched access lines. Reported cable modem availability is weighted by cable TV subscribers. The weighted averages include ILECs or cable system operators that report no availability.

**Table 15**  
**Percentage of Zip Codes with High-Speed Lines in Service**

Number of Providers	1999	2000		2001		2002		2003		2004		2005
	Dec	Jun	Dec	Jun	Dec	Jun	Dec	Jun	Dec	Jun	Dec	Jun
Zero	40.3 %	33.0 %	26.8 %	22.2 %	20.6 %	16.1 %	12.0 %	9.0 %	6.8 %	5.7 %	4.6 %	2.0 %
One	26.0	25.9	22.7	20.3	19.3	18.4	17.3	16.4	14.9	13.8	12.5	9.3
Two	15.5	17.8	18.4	16.7	15.7	16.2	16.8	16.9	17.1	16.8	16.3	14.1
Three	8.2	9.2	10.9	13.2	13.1	13.3	14.4	14.0	14.9	14.9	15.1	15.0
Four	4.3	4.9	6.1	8.2	9.1	9.6	10.3	10.6	11.2	11.6	12.2	12.6
Five	2.7	3.4	4.0	4.9	6.1	6.9	7.3	7.7	7.8	8.4	8.9	9.7
Six	1.7	2.5	3.0	3.6	4.2	4.6	5.0	5.3	5.8	6.1	6.3	6.8
Seven	0.8	1.7	2.3	2.8	3.2	3.2	3.9	4.0	4.2	4.4	4.6	5.3
Eight	0.3	0.8	2.0	2.2	2.5	2.8	2.7	3.1	3.3	3.6	3.6	4.0
Nine	0.2	0.4	1.6	1.9	2.0	2.4	2.2	2.5	2.6	2.8	3.1	3.8
Ten or More	0.0	0.4	2.4	3.9	4.0	6.4	8.0	10.5	11.4	11.8	12.8	17.5

A 250 line per state mandatory reporting threshold applied to data through December 2004. Figures may not add up to 100% due to rounding.

**Chart 12**  
**Percent of Zip Codes with High-Speed Providers**



**Table 16****Percentage of Zip Codes with High-Speed Lines in Service by Technology as of June 30, 2005**

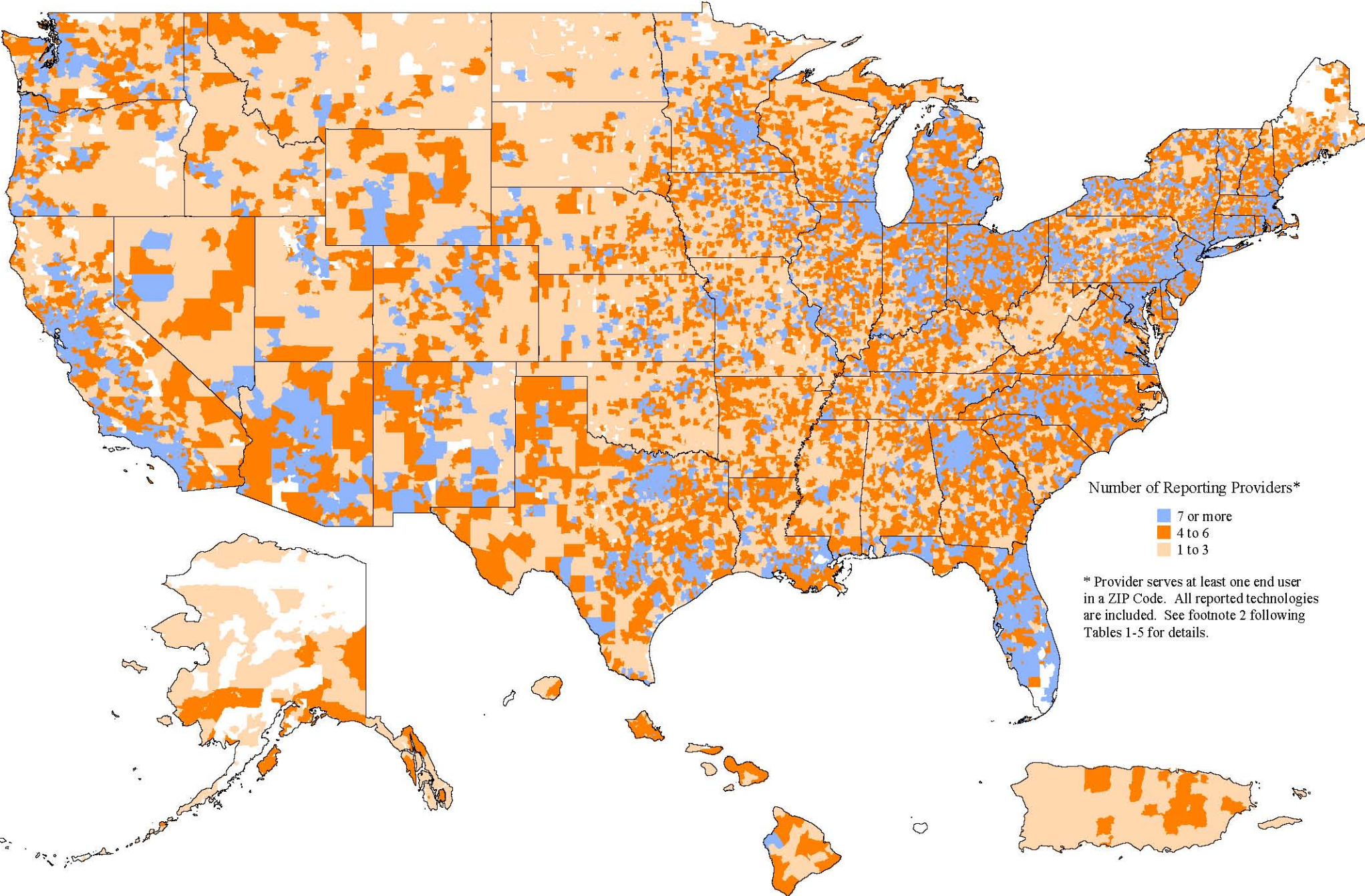
Technology	Number of Providers										
	Zero	One	Two	Three	Four	Five	Six	Seven	Eight	Nine	Ten or More
ADSL	22.0	43.6	18.8	9.1	4.2	1.6	0.6	0.2	0.0	0.0	0.0
SDSL	58.3	16.8	7.0	4.3	3.6	3.4	3.1	2.1	1.0	0.3	0.1
Cable Modem	37.9	51.7	9.4	0.9	0.0	0.0	0.0	0.0	0.0	0.0	0.0
Fiber	73.1	15.7	7.9	2.6	0.6	0.1	0.0	0.0	0.0	0.0	0.0
Satellite	14.3	51.8	32.7	1.1	0.0	0.0	0.0	0.0	0.0	0.0	0.0
Fixed Wireless	81.8	14.7	3.0	0.4	0.0	0.0	0.0	0.0	0.0	0.0	0.0
Mobile Wireless	47.3	45.5	7.1	0.1	0.0	0.0	0.0	0.0	0.0	0.0	0.0
Power Line and/or Other <sup>1</sup>	49.5	22.8	9.6	5.9	4.7	3.6	2.2	1.0	0.4	0.2	0.1
ADSL and/or Cable Modem	15.1	26.1	24.8	15.8	9.4	5.1	2.4	0.9	0.3	0.1	0.0
All Technologies	2.0	9.3	14.1	15.0	12.6	9.7	6.8	5.3	4.0	3.8	17.5

\* Data withheld to maintain firm confidentiality.

Figures may not add up to 100% due to rounding.

<sup>1</sup> Other includes high-speed lines provided over traditional wireline facilities such as T-carrier and also lines provided over any technology that is not specified in the table.

# High-Speed Providers by ZIP Code (As of June 30, 2005)



Number of Reporting Providers\*

- 7 or more
- 4 to 6
- 1 to 3

\* Provider serves at least one end user in a ZIP Code. All reported technologies are included. See footnote 2 following Tables 1-5 for details.

**Table 17**  
**Percentage of Zip Codes with High-Speed Lines in Service as of June 30, 2005**  
**(Over 200 kbps in at least one direction)**

	Number of Providers										
	Zero	One	Two	Three	Four	Five	Six	Seven	Eight	Nine	Ten or More
Alabama	1 %	10 %	18 %	24 %	15 %	10 %	6 %	3 %	3 %	4 %	6 %
Alaska	0	13	39	27	14	7	0	0	0	0	0
Arizona	0	1	3	9	9	11	9	5	5	5	43
Arkansas	0	10	27	29	16	9	4	2	1	1	1
California	1	4	7	9	8	6	4	4	5	5	47
Colorado	1	9	18	15	10	6	5	5	5	4	24
Connecticut	1	0	3	5	9	11	12	11	10	10	30
Delaware	0	0	5	10	28	16	3	5	3	14	16
District of Columbia	0	0	8	4	0	0	0	0	4	16	68
Florida	0	0	1	3	5	5	8	9	9	8	51
Georgia	0	4	10	13	16	13	10	6	3	3	21
Hawaii	6	10	16	18	14	28	7	2	0	0	0
Idaho	3	22	22	19	10	6	4	2	2	4	6
Illinois	2	8	13	15	13	10	7	4	4	3	21
Indiana	1	7	13	16	14	13	9	7	5	3	13
Iowa	2	18	22	20	14	11	5	4	3	1	1
Kansas	5	23	22	14	9	8	5	4	2	2	7
Kentucky	7	19	18	19	14	7	6	3	2	2	4
Louisiana	1	5	10	20	16	12	7	8	4	3	15
Maine	4	11	18	21	24	11	5	3	1	1	1
Maryland	1	2	5	12	14	8	9	8	4	5	32
Massachusetts	0	1	3	9	14	15	9	8	5	7	28
Michigan	0	1	5	12	16	13	10	8	5	4	26
Minnesota	3	16	17	15	12	9	5	4	3	2	16
Mississippi	2	13	21	23	19	8	5	4	3	2	1
Missouri	6	20	22	15	8	5	4	3	3	2	12
Montana	8	26	31	18	7	2	2	1	1	2	2
Nebraska	4	20	26	20	14	8	4	3	1	1	0
Nevada	1	7	10	16	7	7	8	7	8	8	22
New Hampshire	0	2	8	14	17	20	14	8	5	2	11
New Jersey	0	0	1	2	8	9	10	13	9	12	37
New Mexico	3	8	20	27	13	8	3	5	2	2	9
New York	1	4	9	12	13	11	8	7	5	6	24
North Carolina	0	1	4	14	23	20	10	7	4	4	12
North Dakota	9	40	32	13	2	1	1	1	0	1	1
Ohio	0	1	2	8	14	19	15	11	7	7	17
Oklahoma	4	18	28	16	8	6	5	4	3	5	2
Oregon	3	11	16	17	9	11	5	5	3	2	17
Pennsylvania	3	8	12	11	12	10	8	6	5	5	20
Puerto Rico	0	4	25	41	25	4	0	0	0	0	0
Rhode Island	3	1	4	16	8	14	1	7	8	9	28
South Carolina	0	1	10	22	14	19	12	8	6	3	4
South Dakota	8	32	26	15	10	3	2	2	1	1	0
Tennessee	1	7	14	18	15	10	7	5	5	3	16
Texas	1	6	13	13	14	9	7	6	6	5	21
Utah	4	13	18	16	10	5	4	4	1	2	25
Vermont	0	7	19	24	14	14	8	7	3	2	1
Virginia	1	6	12	18	17	12	7	3	4	3	15
Washington	1	5	13	15	11	8	6	2	3	5	31
West Virginia	10	31	29	15	7	4	2	1	0	1	0
Wisconsin	2	8	18	23	14	10	6	5	4	4	7
Wyoming	1	18	26	28	6	7	6	3	4	0	1
Nationwide	2 %	9 %	14 %	15 %	13 %	10 %	7 %	5 %	4 %	4 %	18 %



**Table 18**  
**High-Speed Subscribership**  
**Ranked by Population Density**

Persons per Square Mile <sup>1</sup>	Percentage of Zip Codes with at Least One High-Speed Subscriber						Percentage of Population that Resides in Zip Codes with High-Speed Service					
	Jun 2000	Jun 2001	Jun 2002	Jun 2003	Jun 2004	Jun 2005	Jun 2000	Jun 2001	Jun 2002	Jun 2003	Jun 2004	Jun 2005
More Than 3,147	97.3 %	98.1 %	98.7 %	98.9 %	98.9 %	99.3 %	99.7 %	99.9 %	99.8 %	100.0 %	99.9 %	100.0 %
947-3,147	95.8	97.1	98.2	98.2	98.5	99.0	99.4	99.8	99.9	99.9	99.9	99.9
268-947	93.4	95.6	97.5	98.4	98.5	99.2	98.4	99.5	99.9	99.9	99.9	100.0
118-268	86.7	92.3	95.2	96.9	97.7	98.8	95.9	98.8	99.5	99.7	99.8	99.9
67-118	77.9	87.5	93.0	96.4	97.6	98.6	90.2	96.8	98.5	99.4	99.6	99.8
41-67	65.4	80.9	88.0	93.8	96.4	98.2	81.2	93.0	96.3	98.5	99.1	99.4
25-41	54.5	72.8	81.0	90.4	94.3	97.6	71.4	87.3	92.2	96.9	98.2	99.2
15-25	39.2	58.9	70.0	83.3	88.5	95.7	59.9	78.4	86.5	93.3	95.6	98.6
6-15	31.3	51.1	60.9	77.3	83.5	93.7	56.6	74.6	81.9	90.3	93.8	97.7
Fewer Than 6	23.0	36.8	49.6	68.5	73.4	84.3	43.9	60.7	72.6	85.7	91.1	95.1

**Table 19**  
**High-Speed Subscribership**  
**Ranked by Household Income**

Median Household Income <sup>1</sup>	Percentage of Zip Codes with at Least One High-Speed Subscriber						Percentage of Population that Resides in Zip Codes with High-Speed Service					
	Jun 2000	Jun 2001	Jun 2002	Jun 2003	Jun 2004	Jun 2005	Jun 2000	Jun 2001	Jun 2002	Jun 2003	Jun 2004	Jun 2005
\$53,494 to \$291,938	94.9 %	96.4 %	97.9 %	98.5 %	98.7 %	99.0 %	99.5 %	99.8 %	99.9 %	99.9 %	99.8 %	99.8 %
\$43,617 to \$53,478	85.0	90.7	93.5	96.2	97.2	98.4	98.1	99.3	99.7	99.8	99.9	99.9
\$38,396 to \$43,614	74.1	83.8	89.0	94.0	95.9	98.1	96.4	98.5	99.0	99.6	99.8	99.9
\$34,744 to \$38,395	68.1	80.0	85.0	91.5	94.2	97.4	94.8	97.9	98.7	99.3	99.7	99.8
\$32,122 to \$34,743	64.3	77.3	83.3	90.2	93.0	97.2	93.5	97.4	98.4	99.2	99.5	99.8
\$29,893 to \$32,121	61.3	73.4	80.4	89.9	92.5	97.1	92.2	96.3	97.7	99.1	99.3	99.7
\$27,542 to \$29,892	58.7	73.5	79.7	89.2	92.5	96.7	90.5	95.9	97.5	98.9	99.3	99.7
\$24,855 to \$27,541	56.8	69.6	77.2	87.1	90.9	96.3	89.8	95.2	97.0	98.5	99.0	99.6
\$21,645 to \$24,855	53.3	67.4	76.9	87.4	91.2	95.9	87.5	93.9	96.5	98.5	99.1	99.6
\$0 to \$21,644	47.9	59.1	69.2	78.3	81.3	88.3	88.7	94.1	96.3	98.1	98.8	99.3

<sup>1</sup> Persons per square mile and median household income are presented in decile groups. Each decile group contains 10% of the reported geographic Zip Codes for which the demographic information, as of the year 2000, is available in Demographic Power Pack, Current Year Update (2000), MapInfo Corporation.

# Customer Response

Publication: *High-Speed Services for Internet Access: Status as of June 30, 2005*

You can help us provide the best possible information to the public by completing this form and returning it to the Industry Analysis and Technology Division of the FCC's Wireline Competition Bureau.

1. Please check the category that best describes you:

- press
- current telecommunications carrier
- potential telecommunications carrier
- business customer evaluating vendors/service options
- consultant, law firm, lobbyist
- other business customer
- academic/student
- residential customer
- FCC employee
- other federal government employee
- state or local government employee
- Other (please specify)

2. Please rate the report:      Excellent      Good      Satisfactory      Poor      No opinion

- |                      |                          |                          |                          |                          |                          |
|----------------------|--------------------------|--------------------------|--------------------------|--------------------------|--------------------------|
| Data accuracy        | <input type="checkbox"/> | <input type="checkbox"/> | <input type="checkbox"/> | <input type="checkbox"/> | <input type="checkbox"/> |
| Data presentation    | <input type="checkbox"/> | <input type="checkbox"/> | <input type="checkbox"/> | <input type="checkbox"/> | <input type="checkbox"/> |
| Timeliness of data   | <input type="checkbox"/> | <input type="checkbox"/> | <input type="checkbox"/> | <input type="checkbox"/> | <input type="checkbox"/> |
| Completeness of data | <input type="checkbox"/> | <input type="checkbox"/> | <input type="checkbox"/> | <input type="checkbox"/> | <input type="checkbox"/> |
| Text clarity         | <input type="checkbox"/> | <input type="checkbox"/> | <input type="checkbox"/> | <input type="checkbox"/> | <input type="checkbox"/> |
| Completeness of text | <input type="checkbox"/> | <input type="checkbox"/> | <input type="checkbox"/> | <input type="checkbox"/> | <input type="checkbox"/> |

3. Overall, how do you rate this report?      Excellent      Good      Satisfactory      Poor      No opinion

- |                          |                          |                          |                          |                          |
|--------------------------|--------------------------|--------------------------|--------------------------|--------------------------|
| <input type="checkbox"/> | <input type="checkbox"/> | <input type="checkbox"/> | <input type="checkbox"/> | <input type="checkbox"/> |
|--------------------------|--------------------------|--------------------------|--------------------------|--------------------------|

4. How can this report be improved?

5. May we contact you to discuss possible improvements?

Name:

Telephone #:

To discuss the information in this report, contact: 202-418-0940 or for users of TTY equipment, call 202-418-0484		
Fax this response to	or	Mail this response to
202-418-0520		FCC/WCB/IATD Mail Stop 1600 F Washington, DC 20554