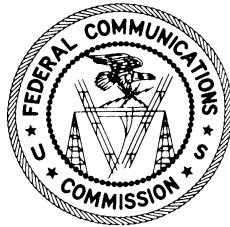


Local Telephone Competition: Status as of December 31, 2005

Industry Analysis and Technology Division
Wireline Competition Bureau
July 2006



This report is available for reference in the FCC's Reference Information Center, Courtyard Level, 445 12th Street, SW, Washington, DC. Copies may be purchased by contacting Best Copy and Printing, Inc., 445 12th Street, SW, Room CY-B402, Washington, DC 20554, telephone (800) 378-3160, or via their website at www.bcpiweb.com. The report can also be downloaded from the Wireline Competition Bureau Statistical Reports Internet site at www.fcc.gov/wcb/stats.

Local Telephone Competition: Status as of December 31, 2005

We present here summary statistics of the latest data on local telephone service competition in the United States as reported in the Commission's local competition and broadband data gathering program (FCC Form 477).¹ The summary statistics provide a snapshot of local telephone service competition based on switched access lines in service and state-specific mobile telephony service subscribers as of December 31, 2005.²

Twice a year, all incumbent local exchanges carriers (incumbent LECs) and competitive local exchange carriers (CLECs) are required to report to the Commission basic information about their local telephone service, and all facilities-based mobile telephony providers are required to provide information about their subscribers. Prior to June 2005, the FCC collected data from carriers with at least 10,000 switched access lines, or mobile telephony subscribers, in service in a particular state. Small carriers, many of whom serve rural areas with relatively small populations, were therefore underrepresented in the earlier data.³ By including these carriers, the number of incumbent LEC and CLEC holding companies and unaffiliated carriers reporting local telephone service information as of December 31, 2005 tripled, and the number of reporting facilities-based mobile telephony providers doubled.⁴

Based on the latest information now available, we summarize the following observations:

¹ *Local Competition and Broadband Reporting*, CC Docket No. 99-301, Report and Order, 15 FCC Rcd 7717 (2000); *Local Telephone Competition and Broadband Reporting*, WC Docket No. 04-141, Report and Order, 19 FCC Rcd 22340 (2004). During this data gathering program, qualifying providers file FCC Form 477 each year on March 1 (reporting data for the preceding December 31) and September 1 (reporting data for June 30 of the same year). An updated FCC Form 477, and instructions for that particular form, for each specific round of the data collection may be downloaded from the FCC Forms website at www.fcc.gov/formpage.html.

² Statistical summaries of the earlier Form 477 data collections appeared in previous releases of the *Local Telephone Competition* report, available at www.fcc.gov/wcb/iatd/comp.html.

³ As of December 31, 2005, filers with fewer than 10,000 switched access lines in a state (including entities that previously filed on a voluntary basis) reported about 4.5 million lines (about 2.0 million incumbent LEC lines and about 2.5 million CLEC lines). By contrast, the data filed for December 2004 included about 0.6 million lines filed on a voluntary basis (about 0.2 million incumbent LEC lines and about 0.4 million CLEC lines). Mobile telephony service providers with fewer than 10,000 subscribers in a state reported about 364,000 subscribers as of December 31, 2005. Such filers reported (on a voluntary basis) about 69,000 subscribers a year earlier.

⁴ The nationwide number of CLEC holding companies and unaffiliated entities reporting local telephone service information increased from 149 to 374, and the number of incumbent LEC entities increased from 190 to 807. See Tables 3 and 4. The number of entities reporting mobile telephony subscribers increased from 76 to 155. See Table 14.

- End-user customers obtained local telephone service by utilizing approximately 143.8 million incumbent LEC switched access lines, 31.6 million CLEC switched access lines, and 203.7 million mobile telephony service subscriptions at the end of 2005.⁵ See Tables 1 and 14.
- CLECs reported 31.6 million (or 18.0%) of the approximately 175.4 million nationwide end-user switched access lines in service at the end of 2005, compared to 33.9 million (or 19.1%) of the 177.6 million lines reported six months earlier. See Table 1.
- About 44% of switched access lines in service to CLEC end users served residential customers at the end of 2005, whereas about 66% of switched access lines in service to incumbent LEC end users served residential customers. See Table 2.
- CLECs reported providing 32% of their end-user switched access lines over their own local loop facilities, 47% by using unbundled network elements (UNEs) they leased from other carriers, and 21% through resale arrangements with unaffiliated carriers.⁶ See Table 3.
- Incumbent LECs reported providing about 26% fewer UNE loops with switching (referred to as the UNE-Platform) to unaffiliated carriers at the end of 2005 than they reported six months earlier (10.8 million compared to 14.6 million) and about 4% more UNE loops without switching (4.5 million compared to 4.3 million). See Table 4.
- About 5.1 million end-user switched access lines were provided by CLECs over coaxial cable connections. These lines represent about 50% of the 10.1 million end-user switched access lines that CLECs reported providing over their own local loop facilities, about 16% of all end-user switched access lines that CLECs reported, about 36% of CLEC lines to residential end users, about 3% of total end-user switched access lines, and about 5% of total residential switched access lines. See Tables 2, 3, and 5.

⁵ SBC Communications, Inc. (SBC) and AT&T Corp. merged, in November 2005, to form AT&T Inc. Therefore, AT&T Inc. submitted Form 477 data as of December 31, 2005. Verizon Communications Inc. and MCI, Inc., which merged in January 2006, made separate filings of the December 2005 data. Form 477 filers report end-user switched access lines provided over the filer's "own facilities" when the filer (including affiliates) owns the "local loop" to the end user's premises. Therefore, any end-user switched access lines that AT&T Corp. previously reported as CLEC lines, and which AT&T Corp. provisioned over unbundled network elements (UNEs) acquired from the incumbent LEC operations of SBC or by reselling SBC's incumbent LEC services, are now reported as lines that AT&T Inc. provides over its own facilities. In this report, we treat these lines as incumbent LEC lines. Also, because such UNEs and resold services are now provided by one AT&T Inc. operation to another AT&T Inc. operation, they are no longer reported on Form 477 as UNEs or services that an incumbent LEC provides to an unaffiliated CLEC. AT&T Inc. has incumbent LEC operations in 13 states: Arkansas, California, Connecticut, Illinois, Indiana, Kansas, Michigan, Missouri, Nevada, Ohio, Oklahoma, Texas, and Wisconsin.

⁶ CLEC "resale" lines should include lines that the CLEC provides by using special access lines or other facilities that it obtains from unaffiliated ILECs or CLECs as tariffed services or under commercial agreements.

- Incumbent LECs were the presubscribed interstate long distance carrier for 51% of the switched access lines they provided to end users, while CLECs were the interstate long distance carrier for 79% of their switched access lines. See Table 6.
- The Commission’s data collection program collates information about CLEC local telephone service lines (and the CLEC share of total local telephone service lines) in individual states. Relatively large numbers of CLEC lines are associated with the more populous states.⁷ With respect to the calculated CLEC share of switched access lines in service, however, some less populous states, such as Nebraska, New Hampshire, Rhode Island, South Dakota, and Utah had larger CLEC shares than some more populous states, such as California, Florida, Ohio, and Texas. See Tables 7 - 10.⁸
- Among the 50 states, there were fewer than 10 reporting CLECs only in Alaska and Hawaii. See Table 13.
- Mobile telephony service providers reported 203.7 million subscribers at the end of 2005, which is 22.6 million, or 12%, more than a year earlier. About 6% of these subscribers were billed by mobile telephony service resellers.⁹ See Table 14.
- At least one CLEC was serving customers in 82% of the nation’s Zip Codes at the end of 2005. About 98% of United States households resided in those Zip Codes. Moreover, multiple carriers reported providing local telephone service in the major population centers of the country. See Table 15 - 17, and the map that follows Table 19.

As other information from FCC Form 477 becomes available, it will be routinely posted on the Commission’s Internet site. We invite users of the information presented in this statistical summary to provide suggestions for improved data collection and analysis by:

- Using the attached customer response form,
- E-mailing comments to James.Eisner@fcc.gov,
- Calling the Industry Analysis and Technology Division of the Wireline Competition Bureau at (202) 418-0940, or
- Participating in any formal proceedings undertaken by the Commission to solicit comments for improvement of FCC Form 477.

⁷ The largest numbers of CLEC lines are reported for New York (3.6 million lines) and California (3.0 million lines), the third and first most populous states, respectively.

⁸ CLEC shares appearing in Table 8 are based on CLEC and ILEC lines in Tables 9 and 10.

⁹ The mobile “resale” percentage should not include any subscribers that the facilities-based provider serves on a pre-paid basis. For reporting purposes, a “facilities-based” mobile telephony service provider serves subscribers using spectrum licenses that it has obtained or manages.

Table 1
End-User Switched Access Lines Reported

Date	ILEC Lines	CLEC Lines	Total	CLEC Share
Dec 1999	181,202,853	8,194,243	189,397,096	4.3 %
Jun 2000	179,648,725	11,557,381	191,206,106	6.0
Dec 2000	177,561,022	14,871,409	192,432,431	7.7
Jun 2001	174,752,275	17,274,727	192,027,002	9.0
Dec 2001	171,917,359	19,653,441	191,570,800	10.3
Jun 2002	167,330,006	21,644,928	188,974,934	11.5
Dec 2002	164,386,452	24,863,691	189,250,143	13.1
Jun 2003	158,274,538	26,985,345	185,259,883	14.6
Dec 2003	153,157,843	29,775,438	182,933,281	16.3
Jun 2004	147,993,218	32,033,915	180,027,133	17.8
Dec 2004	144,809,899	32,880,812	177,690,711	18.5
Jun 2005	143,757,708	33,891,002	177,648,710	19.1
Dec 2005	143,766,498	31,583,879	175,350,377	18.0

Only LECs with at least 10,000 lines in a state were required to report through December 2004. Beginning with the June 2005 data all LECs are required to report. Some data have been revised.

Chart 1
End-User Switched Access Lines Reported
(Lines in Millions)

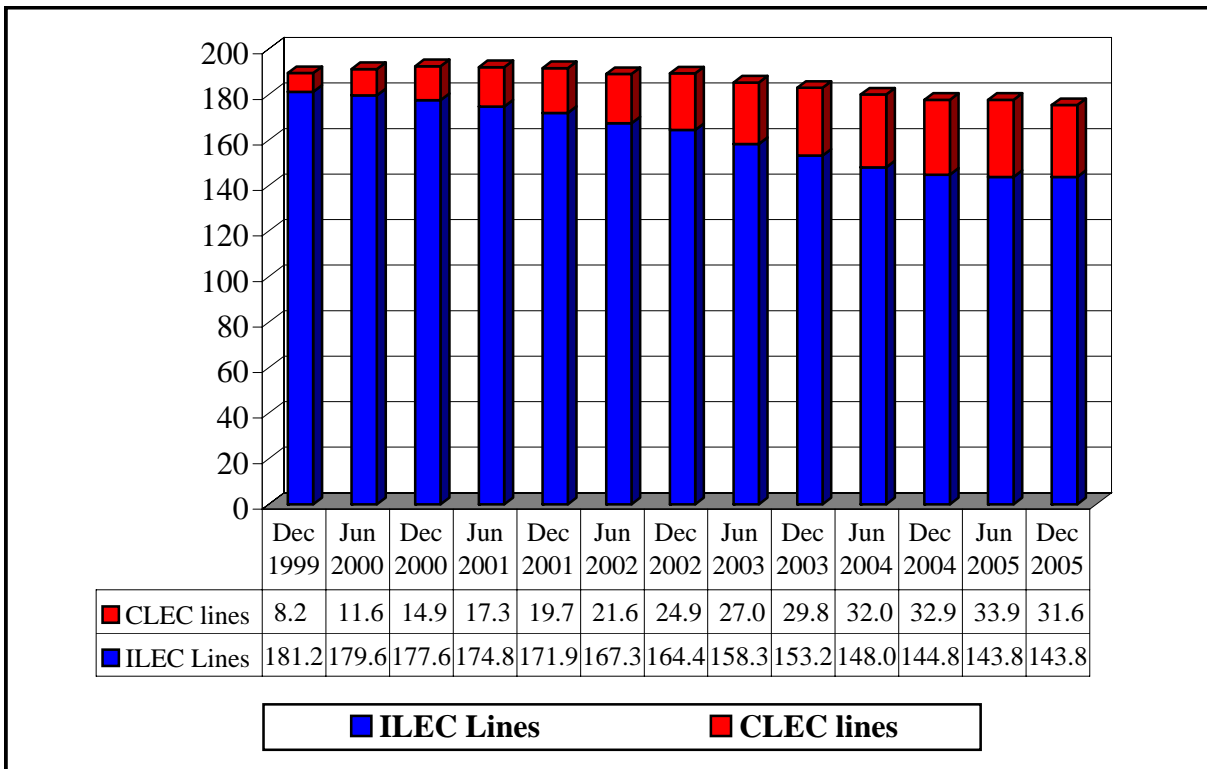


Table 2
End-User Switched Access Lines by Customer Type

Date	Reporting ILECs			Reporting CLECs		
	Residential ¹	Business ²	% Residential	Residential ¹	Business ²	% Residential
Dec 1999	139,694,481	41,508,372	77.1 %	3,368,702	4,825,541	41.1 %
Jun 2000	140,566,144	39,082,581	78.2	4,579,501	6,977,880	39.6
Dec 2000	138,824,111	38,736,911	78.2	6,620,471	8,250,938	44.5
Jun 2001	134,530,884	40,221,391	77.0	7,793,071	9,481,656	45.1
Dec 2001	133,320,119	38,597,240	77.5	9,489,049	10,164,392	48.3
Jun 2002	130,937,328	36,392,678	78.3	11,080,676	10,564,252	51.2
Dec 2002	127,494,698	36,891,754	77.6	14,608,495	10,255,196	58.8
Jun 2003	122,573,530	35,701,008	77.4	16,770,561	10,214,784	62.1
Dec 2003	118,658,867	34,498,976	77.5	18,702,229	11,073,209	62.8
Jun 2004	114,533,368	33,459,850	77.4	20,871,756	11,162,159	65.2
Dec 2004	112,054,420	32,755,479	77.4	19,811,711	13,069,101	60.3
Jun 2005	95,315,689	48,442,019	66.3	16,338,117	17,552,885	48.2
Dec 2005	94,371,498	49,395,000	65.6	13,892,048	17,691,831	44.0

Only LECs with at least 10,000 lines in a state were required to report through December 2004. Beginning with the June 2005 data all LECs are required to report. Some data have been revised.

¹ Included small business lines through December 2004.

² Excluded small business lines through December 2004.

Chart 2
Percent of Lines That Serve Residential Customers ¹

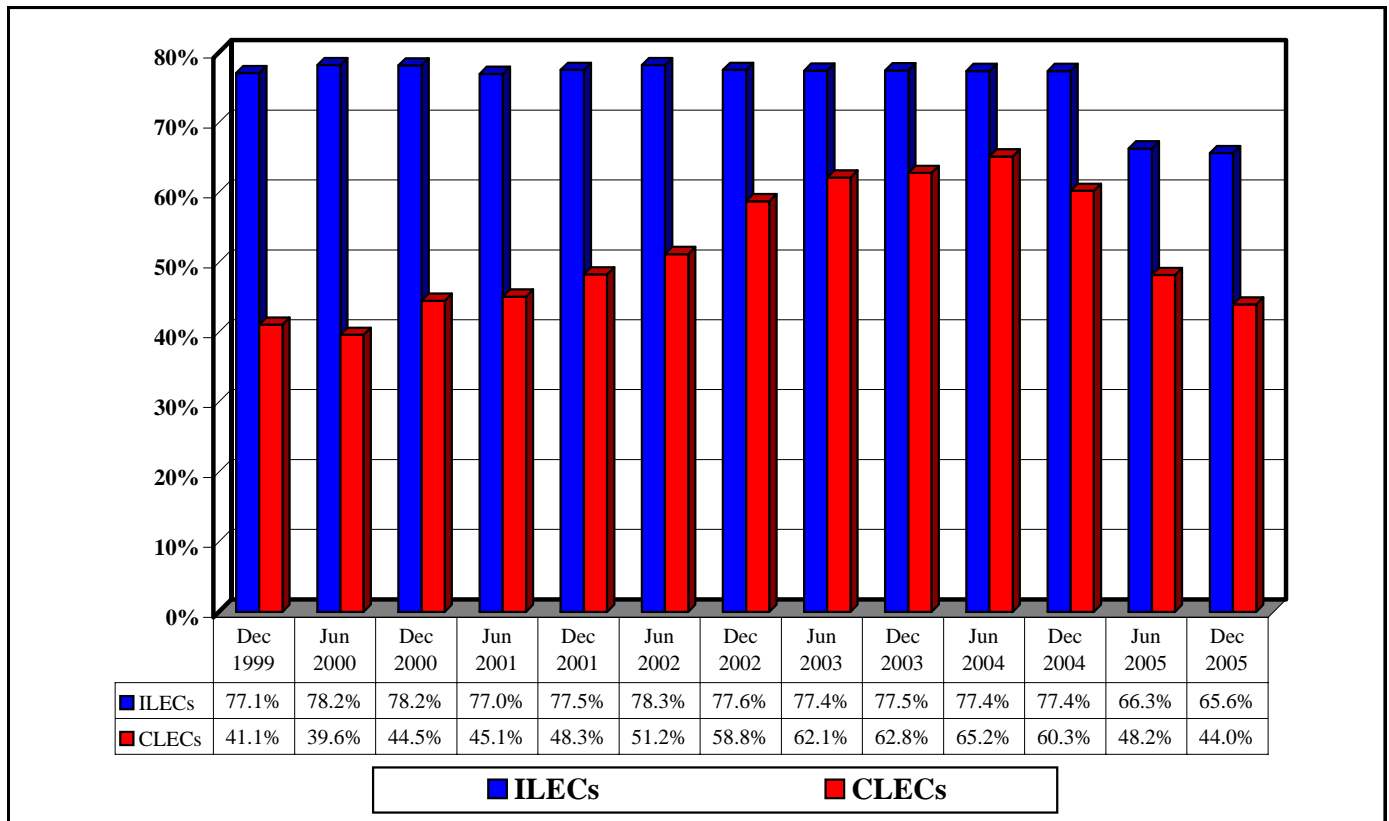


Table 3
Reporting Competitive Local Exchange Carriers
(End-User Switched Access Lines in Thousands)

Date	CLECs Reporting	Total End-User Lines	Acquired from Other Carriers		CLEC-Owned Lines ²	Percent		
			Resold Lines	UNEs ¹		Resold	UNEs	CLEC-Owned
Dec 1999	81	8,194	3,513	1,959	2,723	42.9%	23.9%	33.2%
Jun 2000	78	11,557	4,315	3,201	4,042	37.3	27.7	35.0
Dec 2000	89	14,871	4,114	5,540	5,217	27.7	37.3	35.1
Jun 2001	91	17,275	3,919	7,580	5,776	22.7	43.9	33.4
Dec 2001	94	19,653	4,250	9,332	6,072	21.6	47.5	30.9
Jun 2002	96	21,645	4,478	10,930	6,236	20.7	50.5	28.8
Dec 2002	112	24,864	4,677	13,709	6,479	18.8	55.1	26.1
Jun 2003	125	26,985	4,887	15,728	6,370	18.1	58.3	23.6
Dec 2003	136	29,775	4,842	17,888	7,045	16.3	60.1	23.7
Jun 2004	137	32,034	4,927	19,624	7,483	15.4	61.3	23.4
Dec 2004	149	32,881	5,417	18,961	8,503	16.5	57.7	25.9
Jun 2005	326	33,891	5,753	19,014	9,124	17.0	56.1	26.9
Dec 2005	374	31,584	6,648	14,836	10,100	21.0	47.0	32.0

Only LECs with at least 10,000 lines in a state were required to report through December 2004. Beginning with the June 2005 data all LECs are required to report. Figures may not add to totals due to rounding. Some data have been revised.

¹ Includes unbundled network element (UNE) loops leased from an unaffiliated carrier on a stand-alone basis and also UNE loops leased in combination with UNE switching or any other unbundled network element.

² Lines provided over CLEC-owned "last-mile" facilities.

Chart 3
Competitive Local Exchange Carriers' End-User Lines

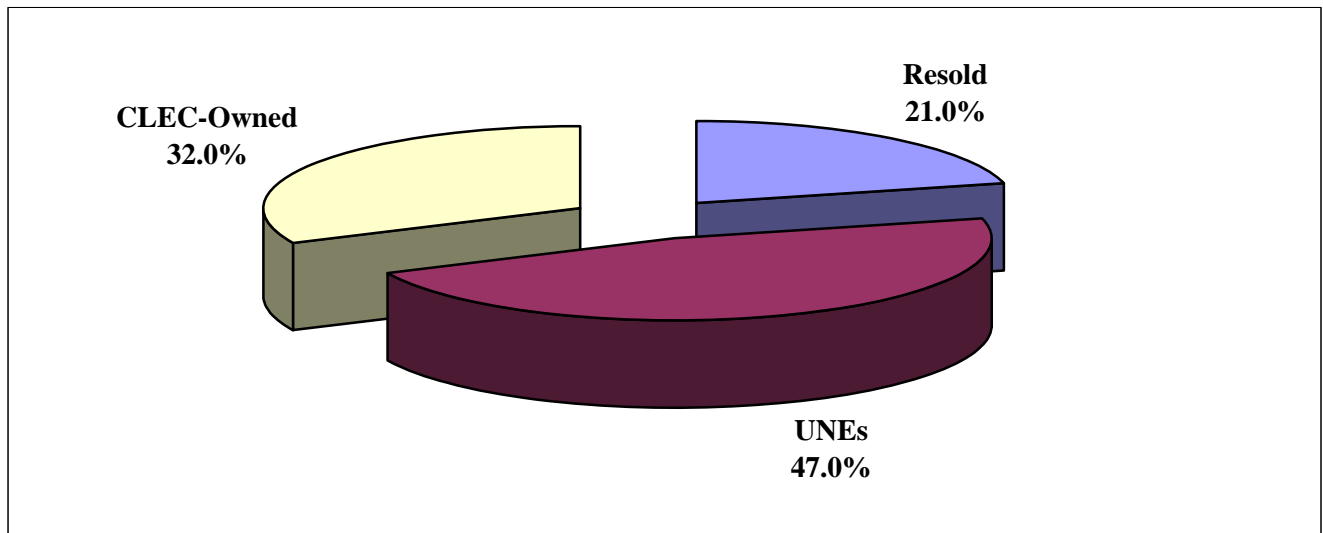


Table 4
Reporting Incumbent Local Exchange Carriers
(Switched Access Lines in Thousands)

Date ¹	ILECs Reporting	Total Lines	End-User Lines	Provided to Other Carriers					
				Resold Lines	UNEs			Total UNEs & Resold Lines	Percent of Total Lines
					Without Switching	With Switching	Total UNEs		
Dec 1997	9	159,008	157,132	1,743			133	1,876	1.2 %
Jun 1998	8	161,810	159,118	2,448			244	2,692	1.7
Dec 1998	7	164,614	161,191	3,062			361	3,423	2.1
Jun 1999	7	167,177	162,909	3,583			685	4,268	2.6
Dec 1999	168	187,190	181,203	4,494	1,004	489	1,493	5,987	3.2
Jun 2000	159	188,058	179,649	5,098	1,696	1,616	3,312	8,409	4.5
Dec 2000	166	188,223	177,561	5,388	2,436	2,838	5,274	10,662	5.7
Jun 2001	156	187,092	174,752	4,417	3,161	4,761	7,922	12,340	6.6
Dec 2001	164	185,391	171,917	4,014	3,679	5,781	9,460	13,474	7.3
Jun 2002	166	182,345	167,330	3,475	4,061	7,478	11,540	15,015	8.2
Dec 2002	174	181,616	164,386	2,743	4,259	10,227	14,487	17,229	9.5
Jun 2003	181	177,770	158,275	2,232	4,227	13,036	17,263	19,495	11.0
Dec 2003	185	174,453	153,158	1,833	4,287	15,176	19,463	21,296	12.2
Jun 2004	185	171,050	147,993	1,600	4,322	17,136	21,458	23,057	13.5
Dec 2004	190	167,063	144,810	1,490	4,217	16,546	20,763	22,253	13.3
Jun 2005	757	164,449	143,758	1,796	4,300	14,596	18,895	20,691	12.6
Dec 2005	807	160,874	143,766	1,793	4,469	10,846	15,315	17,108	10.6

Figures may not add to totals due to rounding. Some data have been revised.

¹ Data for December 1997 through June 1999 are from Common Carrier Bureau voluntary surveys. The later data are from FCC Form 477 filings. Only LECs with at least 10,000 lines in a state were required to report from December 1999 through December 2004. Beginning with the June 2005 data all LECs are required to report.

Chart 4
ILEC Lines and the Percent Provided to Other Carriers

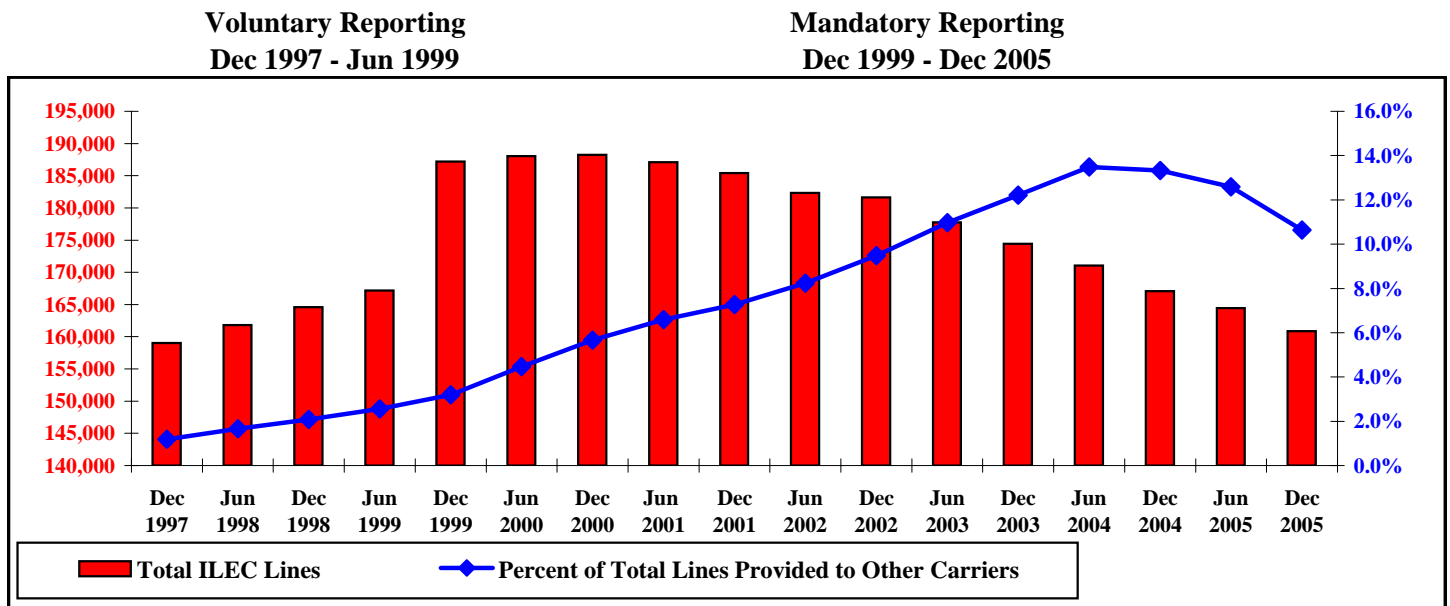


Table 5
Competitive Local Exchange Carrier Lines by Type of Technology
(End-User Switched Access Lines in Thousands)

Date	Coaxial Cable	Other Technologies	Total	Percent Coaxial Cable
Dec 1999	308	7,886	8,194	3.8 %
Jun 2000	614	10,943	11,557	5.3
Dec 2000	1,125	13,746	14,871	7.6
Jun 2001	1,876	15,399	17,275	10.9
Dec 2001	2,246	17,408	19,653	11.4
Jun 2002	2,597	19,048	21,645	12.0
Dec 2002	3,071	21,793	24,864	12.4
Jun 2003	3,123	23,863	26,985	11.6
Dec 2003	3,301	26,474	29,775	11.1
Jun 2004	3,338	28,696	32,034	10.4
Dec 2004	3,706	29,174	32,881	11.3
Jun 2005	4,571	29,320	33,891	13.5
Dec 2005	5,060	26,524	31,584	16.0

Only LECs with at least 10,000 lines in a state were required to report through December 2004. Beginning with the June 2005 data all LECs are required to report. Some data have been revised.

Chart 5
Competitive Local Exchange Carrier Lines by Type of Technology
(End-User Switched Access Lines in Thousands)

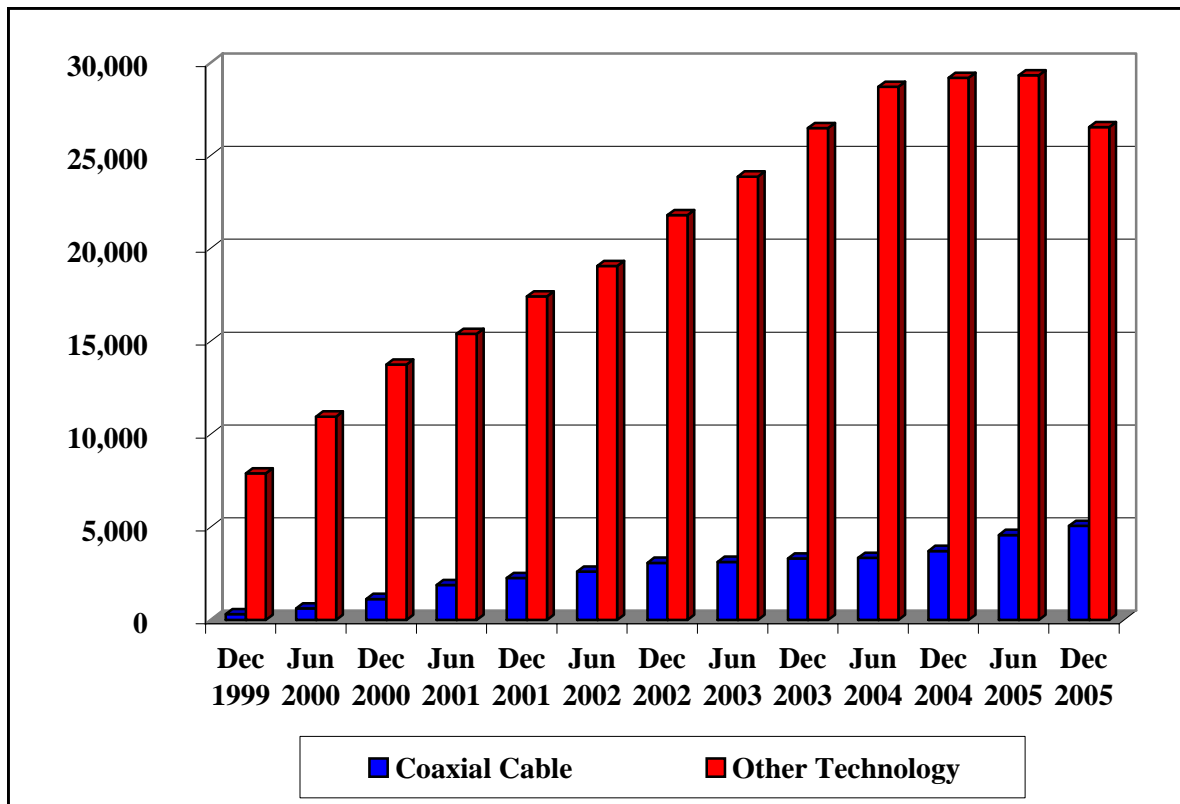


Table 6
Presubscribed Interstate Long Distance Lines
As of December 31, 2005
(In Thousands)

	RBOC	Other ILEC	ILEC Total	CLEC	Total
Residential					
Presubscribed	44,541	9,733	54,273	12,253	66,527
Not Presubscribed	32,763	7,335	40,098	1,639	41,737
All Lines	77,303	17,068	94,371	13,892	108,264
Percent Presubscribed	58%	57%	58%	88%	61%
Business					
Presubscribed	16,236	2,506	18,742	12,635	31,377
Not Presubscribed	26,740	3,912	30,653	5,057	35,710
All Lines	42,976	6,419	49,395	17,692	67,087
Percent Presubscribed	38%	39%	38%	71%	47%
Total					
Presubscribed	60,777	12,239	73,016	24,889	97,904
Not Presubscribed	59,503	11,248	70,751	6,695	77,446
All Lines	120,280	23,487	143,766	31,584	175,350
Percent Presubscribed	51%	52%	51%	79%	56%

Figures may not add to totals due to rounding.

Table 7
End-User Switched Access Lines Served by Reporting Local Exchange Carriers
(As of December 31, 2005)

State	ILECs	CLECs	Total	CLEC Share
Alabama	2,024,260	348,696	2,372,956	15 %
Alaska	326,374	*	*	*
American Samoa	10,838	0	10,838	0
Arizona	2,295,247	976,643	3,271,890	30
Arkansas	1,215,421	151,834	1,367,255	11
California	19,630,709	2,994,653	22,625,362	13
Colorado	2,337,733	590,326	2,928,059	20
Connecticut	1,985,832	227,752	2,213,584	10
Delaware	467,428	118,120	585,548	20
District of Columbia	871,773	172,050	1,043,823	16
Florida	9,209,755	1,731,440	10,941,195	16
Georgia	3,962,993	865,794	4,828,787	18
Guam	67,011	0	67,011	0
Hawaii	627,319	49,317	676,636	7
Idaho	672,447	75,951	748,398	10
Illinois	6,497,122	1,667,867	8,164,989	20
Indiana	3,111,533	359,560	3,471,093	10
Iowa	1,324,575	207,581	1,532,156	14
Kansas	1,122,549	302,249	1,424,798	21
Kentucky	1,768,140	303,165	2,071,305	15
Louisiana	1,832,399	388,269	2,220,668	17
Maine	663,772	163,818	827,590	20
Maryland	3,096,645	693,204	3,789,849	18
Massachusetts	3,102,061	1,036,974	4,139,035	25
Michigan	4,608,796	1,048,822	5,657,618	19
Minnesota	2,318,991	723,489	3,042,480	24
Mississippi	1,104,751	153,783	1,258,534	12
Missouri	2,907,056	363,364	3,270,420	11
Montana	472,596	52,014	524,610	10
Nebraska	681,113	237,496	918,609	26
Nevada	1,246,342	182,030	1,428,372	13
New Hampshire	624,329	209,366	833,695	25
New Jersey	4,714,621	1,282,352	5,996,973	21
New Mexico	892,715	65,123	957,838	7
New York	8,019,979	3,552,159	11,572,138	31
North Carolina	4,128,542	738,055	4,866,597	15
North Dakota	278,956	66,830	345,786	19
Northern Mariana Isl.	22,770	0	22,770	0
Ohio	5,574,685	953,386	6,528,071	15
Oklahoma	1,520,798	324,132	1,844,930	18
Oregon	1,643,476	335,162	1,978,638	17
Pennsylvania	6,299,554	1,882,572	8,182,126	23
Puerto Rico	1,020,878	*	*	*
Rhode Island	369,454	264,827	634,281	42
South Carolina	1,938,813	292,019	2,230,832	13
South Dakota	279,170	136,073	415,243	33
Tennessee	2,717,515	532,347	3,249,862	16
Texas	10,034,762	1,855,025	11,889,787	16
Utah	924,423	260,478	1,184,901	22
Vermont	363,874	51,405	415,279	12
Virgin Islands	70,038	*	*	*
Virginia	3,834,232	1,103,341	4,937,573	22
Washington	3,062,790	514,149	3,576,939	14
West Virginia	875,854	118,349	994,203	12
Wisconsin	2,739,056	588,388	3,327,444	18
Wyoming	251,633	34,004	285,637	12
Nationwide	143,766,498	31,583,879	175,350,377	18 %

* Data withheld to maintain firm confidentiality.

Table 8
Competitive Local Exchange Carrier Share of End-User Switched Access Lines

State	2000		2001		2002		2003		2004		2005	
	Jun	Dec	Jun	Dec	Jun	Dec	Jun	Dec	Jun	Dec	Jun	Dec
Alabama	3 %	4 %	5 %	5 %	5 %	9 %	11 %	13 %	15 %	16 %	16	15 %
Alaska	*	*	*	*	*	*	*	*	*	*	*	*
American Samoa	NA	NA	NA	NA	NA	NA	NA	NA	NA	NA	0	0
Arizona	5	5	7	9	11	12	16	22	25	25	27	30
Arkansas	*	*	*	*	*	10	*	11	12	12	13	11
California	5	6	7	8	9	11	13	15	16	17	18	13
Colorado	7	9	10	13	14	15	16	17	17	16	17	20
Connecticut	5	6	7	7	9	9	10	10	11	13	14	10
Delaware	*	*	0	0	*	*	9	12	16	16	20	20
District of Columbia	7	9	12	13	16	14	16	17	19	19	20	16
Florida	6	6	7	7	9	13	13	14	16	16	15	16
Georgia	6	8	10	11	13	15	17	18	19	20	21	18
Guam	NA	NA	NA	NA	NA	NA	NA	NA	NA	NA	NA	0
Hawaii	*	0	*	*	*	*	*	*	*	*	6	7
Idaho	0	*	*	*	*	*	5	6	7	7	10	10
Illinois	7	9	13	15	17	19	19	20	21	22	20	20
Indiana	4	5	5	5	7	8	9	13	14	13	14	10
Iowa	9	11	11	12	12	13	13	13	14	14	14	14
Kansas	5	7	8	9	12	17	21	21	22	24	25	21
Kentucky	*	3	*	*	*	4	5	8	11	11	14	15
Louisiana	2	3	4	4	5	7	9	10	12	14	19	17
Maine	*	*	*	*	*	*	8	10	14	18	20	20
Maryland	3	4	6	4	6	7	10	14	16	18	18	18
Massachusetts	8	11	12	15	16	16	18	21	23	25	25	25
Michigan	5	6	9	13	18	21	22	25	26	26	25	19
Minnesota	7	9	11	13	14	17	17	19	20	21	21	24
Mississippi	*	4	4	3	2	6	7	9	10	10	14	12
Missouri	5	6	6	7	8	10	10	11	13	13	14	11
Montana	*	*	*	*	*	*	3	4	4	4	8	10
Nebraska	*	*	*	12	16	18	20	21	22	25	25	26
Nevada	*	*	10	*	*	11	9	10	11	11	13	13
New Hampshire	*	6	8	10	13	14	16	17	20	23	25	25
New Jersey	4	5	4	5	6	10	15	19	20	22	22	21
New Mexico	*	*	*	*	*	*	*	*	8	8	8	7
New York	16	20	23	25	25	24	27	28	30	30	30	31
North Carolina	4	4	6	6	6	8	9	9	11	13	13	15
North Dakota	*	*	*	*	*	*	*	8	8	7	20	19
Northern Mariana Isl.	NA	NA	NA	NA	NA	NA	NA	NA	NA	NA	NA	0
Ohio	4	4	4	5	7	9	11	14	15	15	15	15
Oklahoma	*	5	6	8	10	11	11	14	13	16	18	18
Oregon	3	4	5	7	7	9	8	12	13	16	13	17
Pennsylvania	8	10	13	14	15	16	17	19	20	22	23	23
Puerto Rico	*	*	*	*	*	*	*	*	*	*	*	*
Rhode Island	*	*	10	16	18	21	25	28	32	35	40	42
South Carolina	*	4	4	3	5	7	9	9	10	11	13	13
South Dakota	*	*	*	*	*	*	14	18	*	*	30	33
Tennessee	6	6	8	8	7	9	10	11	14	15	16	16
Texas	7	13	14	16	16	17	18	18	19	19	19	16
Utah	6	10	11	13	13	15	19	20	23	24	23	22
Vermont	*	*	*	*	*	*	*	*	*	*	14	12
Virgin Islands	0	0	0	0	0	0	0	0	0	0	*	*
Virginia	5	7	9	11	12	12	14	17	20	21	21	22
Washington	5	6	6	8	9	10	10	11	13	14	14	14
West Virginia	*	*	*	*	*	*	*	*	*	11	12	12
Wisconsin	7	8	9	11	12	13	15	18	19	18	19	18
Wyoming	*	*	*	*	*	*	*	*	*	*	11	12
Nationwide	6 %	8 %	9 %	10 %	11 %	13 %	15 %	16 %	18 %	18 %	19 %	18 %

* Data withheld to maintain firm confidentiality. NA is an abbreviation for not applicable. Some data have been revised.

Only LECs with at least 10,000 lines in a state were required to report through December 2004. Beginning with the June 2005 data all LECs are required to report.

Table 9
End-User Switched Access Lines Served by Reporting Competitive Local Exchange Carriers

State	1999	2000	2001	2002	2003	2004	2005	
	Dec	Dec	Dec	Dec	Dec	Dec	Jun	Dec
Alabama	131,357	104,933	117,159	215,962	302,911	369,923	386,112	348,696
Alaska	*	*	*	*	*	*	*	*
American Samoa	0	0	0	0	0	0	0	0
Arizona	*	165,597	310,517	400,080	707,477	792,272	864,526	976,643
Arkansas	*	*	*	144,411	146,513	151,118	181,656	151,834
California	1,027,200	1,498,146	2,003,404	2,705,851	3,422,373	3,905,815	4,030,126	2,994,653
Colorado	141,135	286,955	391,257	482,014	505,772	473,193	496,728	590,326
Connecticut	86,385	154,349	187,450	236,462	242,643	300,221	316,131	227,752
Delaware	*	*	0	*	71,230	95,464	122,117	118,120
District of Columbia	77,865	94,850	126,461	160,174	180,680	211,752	222,582	172,050
Florida	681,382	718,157	866,809	1,509,299	1,576,562	1,818,671	1,704,646	1,731,440
Georgia	254,672	462,392	600,087	807,935	913,567	1,002,671	1,024,581	865,794
Guam	0	0	0	0	0	0	0	0
Hawaii	*	0	*	*	*	*	38,447	49,317
Idaho	0	*	*	*	46,858	47,442	77,018	75,951
Illinois	443,936	803,492	1,341,060	1,602,482	1,662,007	1,712,232	1,601,784	1,667,867
Indiana	96,091	191,921	205,845	284,532	457,657	472,491	493,450	359,560
Iowa	*	164,069	186,254	201,176	188,645	195,144	216,229	207,581
Kansas	*	106,686	145,659	258,312	310,032	335,946	362,494	302,249
Kentucky	45,522	56,392	*	92,483	162,391	220,362	300,118	303,165
Louisiana	71,206	69,437	93,107	188,652	229,051	323,623	457,783	388,269
Maine	*	*	*	*	78,050	143,207	168,895	163,818
Maryland	79,173	160,126	158,999	285,416	555,282	693,940	717,545	693,204
Massachusetts	277,476	509,731	669,209	750,473	973,607	1,089,437	1,089,068	1,036,974
Michigan	208,980	366,305	865,182	1,362,217	1,547,619	1,571,391	1,482,865	1,048,822
Minnesota	202,675	287,660	394,310	572,708	581,234	609,495	643,452	723,489
Mississippi	57,914	63,515	43,578	74,410	111,657	127,282	174,913	153,783
Missouri	113,347	203,537	262,947	336,895	362,346	411,039	451,936	363,364
Montana	*	*	*	*	18,616	20,401	43,205	52,014
Nebraska	*	*	144,229	177,698	199,498	216,723	228,138	237,496
Nevada	*	*	*	163,520	150,615	152,285	185,347	182,030
New Hampshire	*	52,137	85,549	125,893	142,385	192,674	217,847	209,366
New Jersey	*	323,680	330,005	697,176	1,235,977	1,394,412	1,389,001	1,282,352
New Mexico	*	*	*	*	*	76,443	75,643	65,123
New York	1,191,446	2,769,814	3,353,394	3,175,265	3,596,739	3,627,966	3,574,492	3,552,159
North Carolina	166,473	230,733	302,044	405,853	476,299	628,285	617,656	738,055
North Dakota	*	*	*	*	25,039	20,478	68,767	66,830
Northern Mariana Isl.	0	0	0	0	0	0	0	0
Ohio	262,159	308,213	352,811	652,104	946,303	963,330	981,363	953,386
Oklahoma	*	102,456	160,186	207,798	270,313	286,138	328,505	324,132
Oregon	47,239	99,326	153,084	183,319	249,696	317,675	260,065	335,162
Pennsylvania	412,761	870,618	1,186,897	1,405,894	1,585,025	1,828,160	1,870,333	1,882,572
Puerto Rico	0	*	*	*	*	*	*	*
Rhode Island	*	*	108,190	145,202	187,936	229,179	267,486	264,827
South Carolina	*	89,255	72,035	171,572	218,095	240,281	289,887	292,019
South Dakota	*	*	*	*	64,784	*	128,053	136,073
Tennessee	129,987	222,917	268,222	329,150	380,298	481,997	529,540	532,347
Texas	586,111	1,764,676	2,166,033	2,182,929	2,265,505	2,278,556	2,332,263	1,855,025
Utah	34,351	129,834	155,992	194,352	241,454	286,966	280,696	260,478
Vermont	*	*	*	*	*	*	60,569	51,405
Virgin Islands	0	0	0	0	0	0	*	*
Virginia	88,431	336,826	537,753	639,330	873,022	1,074,184	1,055,234	1,103,341
Washington	138,449	240,514	336,230	406,750	433,967	501,518	505,432	514,149
West Virginia	*	*	*	*	*	107,134	117,620	118,349
Wisconsin	177,336	278,087	367,195	477,915	603,492	593,293	649,256	588,388
Wyoming	*	*	*	*	*	*	30,425	34,004
Total	8,194,243	14,871,409	19,653,441	24,863,691	29,775,438	32,880,812	33,891,002	31,583,879

* Data withheld to maintain firm confidentiality.

Only LECs with at least 10,000 lines in a state were required to report through December 2004. Beginning with the June 2005 data all LECs are required to report. Some data have been revised.

Table 10
End-User Switched Access Lines Served by Reporting Incumbent Local Exchange Carriers

State	1999	2000	2001	2002	2003	2004	2005	
	Dec	Dec	Dec	Dec	Dec	Dec	Jun	Dec
Alabama	2,360,023	2,424,197	2,381,574	2,238,352	2,046,244	1,971,269	2,024,441	2,024,260
Alaska	355,583	401,177	338,941	327,183	316,233	299,899	328,415	326,374
American Samoa	0	0	0	0	0	0	10,659	10,838
Arizona	3,006,276	3,073,779	2,981,156	2,878,210	2,541,931	2,367,011	2,325,669	2,295,247
Arkansas	1,396,981	1,420,169	1,363,454	1,257,291	1,212,895	1,153,302	1,216,081	1,215,421
California	23,198,657	23,250,580	22,771,976	21,475,881	20,111,818	19,140,976	18,944,739	19,630,709
Colorado	2,873,169	2,833,948	2,727,654	2,642,166	2,496,330	2,403,583	2,370,884	2,337,733
Connecticut	2,416,300	2,382,208	2,329,716	2,266,558	2,172,574	2,045,255	1,984,587	1,985,832
Delaware	581,714	555,913	552,331	562,577	525,331	485,278	478,837	467,428
District of Columbia	994,975	922,531	865,008	976,228	901,056	892,860	894,341	871,773
Florida	11,090,801	11,349,981	11,019,972	10,406,129	9,975,073	9,539,410	9,345,496	9,209,755
Georgia	4,869,774	4,988,949	4,723,842	4,423,324	4,187,544	3,990,388	3,972,427	3,962,993
Guam	0	0	0	0	0	0	0	67,011
Hawaii	736,080	744,205	735,459	723,111	698,178	673,259	643,998	627,319
Idaho	709,210	733,580	706,991	700,089	678,088	659,009	682,165	672,447
Illinois	8,040,394	7,875,563	7,578,706	6,994,127	6,517,977	6,225,760	6,214,096	6,497,122
Indiana	3,559,946	3,574,414	3,637,893	3,459,873	3,188,863	3,056,392	3,070,315	3,111,533
Iowa	1,439,574	1,387,746	1,356,643	1,329,633	1,285,764	1,210,098	1,355,951	1,324,575
Kansas	1,543,799	1,498,636	1,397,937	1,236,051	1,149,527	1,067,801	1,110,300	1,122,549
Kentucky	2,126,249	2,166,664	2,173,958	2,100,313	1,910,272	1,772,039	1,791,507	1,768,140
Louisiana	2,423,524	2,506,348	2,440,988	2,353,620	2,146,036	2,000,230	1,953,820	1,832,399
Maine	822,990	804,652	764,536	797,973	737,751	661,288	688,379	663,772
Maryland	3,932,708	3,802,622	3,660,869	3,634,524	3,369,687	3,189,630	3,173,227	3,096,645
Massachusetts	4,580,383	4,252,502	3,931,469	3,914,218	3,565,171	3,321,129	3,245,760	3,102,061
Michigan	6,287,424	6,262,696	5,965,971	5,174,471	4,614,333	4,393,671	4,410,849	4,608,796
Minnesota	2,926,177	2,940,034	2,698,867	2,708,221	2,453,860	2,317,299	2,384,842	2,318,991
Mississippi	1,288,847	1,352,284	1,332,389	1,277,168	1,186,725	1,125,570	1,117,163	1,104,751
Missouri	3,464,118	3,418,983	3,328,130	3,145,872	2,997,347	2,852,641	2,892,074	2,907,056
Montana	530,884	529,878	521,550	509,979	490,505	471,621	487,046	472,596
Nebraska	946,718	949,217	1,030,125	828,394	736,105	665,963	692,446	681,113
Nevada	1,331,122	1,353,193	1,352,724	1,348,042	1,301,193	1,260,566	1,251,993	1,246,342
New Hampshire	861,976	805,143	758,515	743,300	703,594	653,880	645,599	624,329
New Jersey	6,867,616	6,747,131	6,482,459	6,200,678	5,425,840	4,972,805	4,846,691	4,714,621
New Mexico	940,489	957,195	965,946	965,816	919,450	879,539	902,178	892,715
New York	12,675,692	10,952,903	10,223,476	10,037,200	9,115,865	8,474,296	8,292,109	8,019,979
North Carolina	4,922,110	5,133,984	5,023,740	4,824,385	4,630,912	4,349,371	4,239,339	4,128,542
North Dakota	357,062	317,270	306,963	293,639	275,457	257,409	280,323	278,956
Northern Mariana Isl	0	0	0	0	0	0	0	22,770
Ohio	6,904,938	6,922,773	6,967,603	6,405,570	5,889,260	5,581,862	5,504,901	5,574,685
Oklahoma	2,008,819	1,950,618	1,873,489	1,726,359	1,638,861	1,524,900	1,534,575	1,520,798
Oregon	2,104,982	2,109,510	2,043,164	1,955,544	1,813,627	1,697,357	1,672,650	1,643,476
Pennsylvania	8,474,914	8,012,115	7,524,072	7,394,441	6,922,904	6,498,790	6,400,366	6,299,554
Puerto Rico	1,294,962	1,299,291	1,288,439	1,276,493	1,178,707	1,072,456	1,047,636	1,020,878
Rhode Island	676,212	627,784	570,513	542,069	482,392	420,277	394,144	369,454
South Carolina	2,222,641	2,314,649	2,276,681	2,210,548	2,100,205	2,002,526	1,895,283	1,938,813
South Dakota	353,816	309,349	327,150	309,173	297,540	269,271	297,036	279,170
Tennessee	3,322,220	3,412,145	3,289,154	3,147,556	2,943,127	2,773,968	2,727,436	2,717,515
Texas	12,601,936	11,892,768	11,365,441	10,766,127	10,269,558	9,780,440	9,730,233	10,034,762
Utah	1,197,043	1,174,625	1,086,537	1,075,061	993,796	923,458	917,429	924,423
Vermont	404,836	400,929	388,399	395,441	376,390	361,751	369,720	363,874
Virgin Islands	66,701	0	70,784	71,894	71,284	70,888	70,462	70,038
Virginia	4,853,301	4,317,626	4,436,193	4,512,398	4,192,316	3,996,369	3,924,917	3,834,232
Washington	3,811,920	3,784,183	3,635,702	3,553,994	3,375,160	3,204,555	3,136,578	3,062,790
West Virginia	1,004,031	927,432	967,218	974,090	954,583	896,304	891,492	875,854
Wisconsin	3,184,664	3,178,516	3,121,462	3,063,426	2,834,559	2,699,412	2,725,490	2,739,056
Wyoming	255,572	256,434	253,430	251,672	238,045	234,818	248,614	251,633
Total	181,202,853	177,561,022	171,917,359	164,386,452	153,157,843	144,809,899	143,757,708	143,766,498

Only LECs with at least 10,000 lines in a state were required to report through December 2004. Beginning with the June 2005 data all LECs are required to report. Some data have been revised.

Table 11
CLEC-Reported End-User Switched Access Lines by State
(As of December 31, 2005)

State	Resold Lines	UNEs	CLEC-Owned	Total
Alabama	87,472	189,255	71,968	348,696
Alaska	*	*	*	*
American Samoa	0	0	0	0
Arizona	172,769	159,059	644,816	976,643
Arkansas	7,477	76,729	67,628	151,834
California	554,267	1,160,206	1,280,180	2,994,653
Colorado	95,333	222,442	272,551	590,326
Connecticut	25,634	89,519	112,599	227,752
Delaware	40,959	73,679	3,482	118,120
District of Columbia	49,533	61,890	60,627	172,050
Florida	464,157	865,804	401,479	1,731,440
Georgia	237,541	488,854	139,399	865,794
Guam	0	0	0	0
Hawaii	18,859	5,222	25,236	49,317
Idaho	13,989	37,664	24,298	75,951
Illinois	105,164	1,155,328	407,375	1,667,867
Indiana	41,044	228,475	90,041	359,560
Iowa	41,204	105,091	61,286	207,581
Kansas	17,959	151,291	133,000	302,249
Kentucky	150,450	118,434	34,281	303,165
Louisiana	72,168	160,802	155,299	388,269
Maine	45,449	66,610	51,759	163,818
Maryland	296,750	336,320	60,134	693,204
Massachusetts	303,316	339,513	394,145	1,036,974
Michigan	31,375	915,393	102,053	1,048,822
Minnesota	132,605	348,434	242,450	723,489
Mississippi	38,129	97,444	18,210	153,783
Missouri	18,374	207,762	137,229	363,364
Montana	7,709	14,509	29,796	52,014
Nebraska	*	*	181,203	237,496
Nevada	30,327	113,730	37,973	182,030
New Hampshire	49,910	79,714	79,742	209,366
New Jersey	606,709	498,785	176,858	1,282,352
New Mexico	30,693	23,130	11,299	65,123
New York	1,191,200	1,482,438	878,521	3,552,159
North Carolina	199,147	301,267	237,641	738,055
North Dakota	6,077	44,683	16,070	66,830
Northern Mariana Isl.	0	0	0	0
Ohio	62,851	448,758	441,777	953,386
Oklahoma	9,278	109,512	205,342	324,132
Oregon	48,163	224,351	62,649	335,162
Pennsylvania	360,838	877,226	644,508	1,882,572
Puerto Rico	*	*	*	*
Rhode Island	*	53,323	*	264,827
South Carolina	49,908	168,936	73,175	292,019
South Dakota	28,007	28,947	79,119	136,073
Tennessee	133,030	252,958	146,358	532,347
Texas	177,290	1,001,005	676,730	1,855,025
Utah	53,087	121,679	85,712	260,478
Vermont	15,320	25,469	10,616	51,405
Virgin Islands	*	*	*	*
Virginia	279,049	394,772	429,521	1,103,341
Washington	87,247	249,162	177,741	514,149
West Virginia	33,274	75,558	9,517	118,349
Wisconsin	19,037	430,374	138,978	588,388
Wyoming	2,705	22,298	9,001	34,004
Total	6,648,359	14,835,776	10,099,743	31,583,879

* Data withheld to maintain firm confidentiality.

Table 12
Percentage of Lines Provided to Residential Customers

State	ILECs		CLECs		Total	
	Jun 2005	Dec 2005	Jun 2005	Dec 2005	Jun 2005	Dec 2005
Alabama	72	72	48	44	68	68
Alaska	55	56	*	*	*	*
American Samoa	53	58	NA	NA	53	58
Arizona	66	66	66	58	66	64
Arkansas	69	68	51	43	66	65
California	62	61	49	45	60	59
Colorado	68	68	36	28	63	60
Connecticut	69	67	38	45	65	64
Delaware	65	65	44	40	61	60
District of Columbia	25	25	19	22	24	25
Florida	70	70	38	27	65	63
Georgia	64	64	43	41	60	60
Guam	NA	57	NA	NA	NA	57
Hawaii	66	65	0	26	62	62
Idaho	70	70	45	28	67	65
Illinois	60	60	53	36	59	55
Indiana	67	67	56	52	65	65
Iowa	71	71	57	56	69	69
Kansas	66	63	58	65	64	64
Kentucky	70	70	57	64	68	69
Louisiana	70	67	53	50	67	64
Maine	74	75	51	49	70	70
Maryland	61	61	47	47	58	58
Massachusetts	64	64	48	43	60	59
Michigan	61	61	61	60	61	61
Minnesota	71	71	45	40	65	63
Mississippi	70	69	58	58	68	67
Missouri	71	69	54	56	69	68
Montana	70	70	32	41	67	67
Nebraska	59	59	61	61	60	59
Nevada	67	66	16	17	61	60
New Hampshire	79	73	41	39	69	65
New Jersey	63	62	47	44	60	58
New Mexico	72	72	36	34	69	69
New York	62	62	56	51	60	59
North Carolina	71	70	32	39	66	65
North Dakota	71	70	58	56	68	67
Northern Mariana Islands	NA	49	NA	NA	NA	49
Ohio	68	67	54	45	66	64
Oklahoma	70	69	56	62	68	68
Oregon	74	73	33	22	68	64
Pennsylvania	71	71	36	32	63	62
Puerto Rico	86	83	*	*	*	*
Rhode Island	67	67	58	59	63	64
South Carolina	71	70	37	37	67	66
South Dakota	65	65	68	64	66	64
Tennessee	73	73	33	27	67	65
Texas	66	65	49	52	63	63
Utah	68	68	41	33	62	60
Vermont	73	73	30	29	66	68
Virgin Islands	73	66	*	*	73	*
Virginia	61	60	53	51	59	58
Washington	72	72	33	28	66	65
West Virginia	76	76	25	23	70	69
Wisconsin	66	64	52	53	63	62
Wyoming	62	62	56	59	61	62
Nationwide	66	66	48	44	63	62

* Data withheld to maintain firm confidentiality. NA is an abbreviation for not applicable. Some data have been revised.

Table 13
Number of Reporting Local Exchange Carriers
(As of December 31, 2005)

State	ILECs	CLECs	Total
Alabama	21	38	59
Alaska	16	3	19
American Samoa	1	0	1
Arizona	14	26	40
Arkansas	19	27	46
California	16	54	70
Colorado	23	29	52
Connecticut	3	22	25
Delaware	1	22	23
District of Columbia	1	25	26
Florida	9	59	68
Georgia	23	52	75
Guam	1	0	1
Hawaii	2	6	8
Idaho	18	19	37
Illinois	43	63	106
Indiana	31	45	76
Iowa	137	46	183
Kansas	35	38	73
Kentucky	18	45	63
Louisiana	11	40	51
Maine	10	19	29
Maryland	2	39	41
Massachusetts	4	33	37
Michigan	26	45	71
Minnesota	59	44	103
Mississippi	13	38	51
Missouri	34	38	72
Montana	15	19	34
Nebraska	34	20	54
Nevada	12	24	36
New Hampshire	6	24	30
New Jersey	3	51	54
New Mexico	15	21	36
New York	25	56	81
North Carolina	20	48	68
North Dakota	20	20	40
Northern Mariana Islands	1	0	1
Ohio	34	46	80
Oklahoma	34	34	68
Oregon	28	31	59
Pennsylvania	24	51	75
Puerto Rico	1	4	5
Rhode Island	1	20	21
South Carolina	16	45	61
South Dakota	26	19	45
Tennessee	18	40	58
Texas	53	67	120
Utah	11	18	29
Vermont	8	12	20
Virgin Islands	1	1	2
Virginia	13	38	51
Washington	16	33	49
West Virginia	7	20	27
Wisconsin	44	46	90
Wyoming	11	15	26
Nationwide - Unduplicated	807	374	1,181

Each report represents all of a company's operations in a given state. Carriers with both ILEC and CLEC operations in the same state provide separate reports.

Table 14
Mobile Wireless Telephone Subscribers ¹

State	Dec 2005		Subscribers							
	Carriers ¹	Percent Resold ²	1999	2000	2001	2002	2003	2004	2005	
			Dec	Dec	Dec	Dec	Dec	Dec	Dec	Jun
Alabama	13	6 %	1,080,410	1,386,294	1,979,075	1,987,254	2,242,108	2,580,810	2,843,385	3,071,359
Alaska	10	2	165,221	*	240,216	267,630	303,184	321,152	340,507	376,695
American Samoa	*	*	0	0	0	0	0	*	*	*
Arizona	10	9	1,125,321	1,855,115	2,171,021	2,520,058	2,843,061	3,299,222	3,547,280	3,849,152
Arkansas	6	5	719,919	743,928	970,127	1,156,345	1,296,901	1,458,673	1,681,404	1,781,266
California	11	4	8,544,941	12,710,520	15,052,203	17,575,105	20,360,454	23,457,761	24,598,429	25,564,483
Colorado	8	10	1,552,718	1,856,075	2,145,816	2,358,748	2,554,731	2,808,195	3,053,186	3,260,286
Connecticut	5	5	1,077,089	1,277,123	1,639,914	1,694,110	1,928,988	2,181,133	2,332,045	2,466,372
Delaware	4	6	270,848	371,014	412,611	438,196	543,526	646,064	710,853	751,042
Dist. of Columbia	4	5	346,681	354,735	404,489	472,832	513,102	657,774	746,529	819,061
Florida	7	6	5,158,079	6,369,985	8,937,063	9,482,349	10,855,430	13,169,278	12,577,898	12,521,686
Georgia	9	6	2,538,983	2,754,784	4,149,717	4,497,576	4,940,091	5,730,223	6,023,302	6,103,234
Guam	*	*	*	0	*	*	*	*	*	61,670
Hawaii	4	3	288,425	524,291	595,721	689,857	771,023	880,965	935,189	983,998
Idaho	14	6	271,436	344,564	444,864	536,064	605,488	705,948	777,445	838,095
Illinois	9	6	3,922,482	5,143,767	5,631,172	6,476,683	7,183,989	8,075,938	8,575,211	9,026,588
Indiana	7	10	1,318,975	1,715,074	1,921,356	2,390,567	2,642,810	3,158,002	3,276,910	3,540,375
Iowa	39	7	774,773	832,106	1,087,608	1,239,384	1,342,931	1,557,542	1,593,673	1,767,830
Kansas	11	9	669,472	801,293	956,050	1,117,277	1,261,242	1,454,087	1,538,945	1,666,340
Kentucky	10	10	911,700	1,026,334	1,405,043	1,456,705	1,812,657	2,189,345	2,495,494	2,657,782
Louisiana	8	6	1,227,106	1,306,457	1,920,740	2,190,613	2,470,146	2,834,716	2,997,513	3,258,336
Maine	6	12	187,003	359,786	427,313	466,896	568,159	662,623	785,814	823,242
Maryland	6	5	1,634,625	2,298,651	2,614,216	2,913,943	3,319,605	3,900,172	4,177,782	4,470,611
Massachusetts	5	6	1,892,014	2,649,130	2,996,816	3,375,726	3,741,975	4,042,592	4,316,120	4,544,572
Michigan	10	8	3,512,813	3,551,719	4,238,399	4,674,980	5,114,259	5,766,616	6,238,846	6,613,341
Minnesota	9	10	1,550,411	1,851,430	2,153,857	2,415,033	2,677,472	2,973,126	3,124,214	3,370,196
Mississippi	9	7	673,355	786,577	1,048,061	1,112,765	1,324,160	1,517,702	1,627,762	1,817,099
Missouri	12	8	1,855,452	1,767,411	2,106,599	2,289,831	2,691,255	3,109,167	3,482,839	3,732,549
Montana	7	4	*	*	279,349	315,512	373,947	*	467,795	526,954
Nebraska	10	4	576,296	659,380	791,799	867,810	937,184	1,045,810	1,078,955	1,169,068
Nevada	8	7	750,335	684,752	842,155	984,486	1,216,838	1,463,370	1,605,708	1,778,411
New Hampshire	6	8	280,508	387,264	492,390	525,689	648,788	727,985	916,833	989,443
New Jersey	4	4	2,289,181	3,575,130	4,283,643	4,587,640	5,799,417	7,388,722	7,269,330	7,723,622
New Mexico	9	7	363,827	443,343	660,849	780,855	859,408	987,813	1,025,143	1,170,436
New York	11	6	4,833,816	5,918,136	7,429,249	8,937,683	9,453,613	10,834,741	11,901,311	12,634,420
North Carolina	14	6	2,536,068	3,105,811	3,767,598	4,094,715	4,554,723	5,363,630	5,496,422	5,784,334
North Dakota	6	3	*	*	*	*	*	*	388,609	454,456
Northern Mariana Isl.	*	*	*	*	*	*	*	*	*	*
Ohio	11	8	3,237,786	4,150,498	4,739,795	5,212,204	5,817,211	6,627,910	7,056,675	7,559,975
Oklahoma	14	7	826,637	1,124,214	1,288,357	1,440,970	1,614,191	1,760,122	2,000,787	2,187,424
Oregon	9	8	914,848	1,201,207	1,399,279	1,682,343	1,778,936	2,029,224	2,128,710	2,417,992
Pennsylvania	11	8	2,767,474	4,129,186	4,849,085	5,258,844	6,073,573	7,037,296	7,340,862	7,881,534
Puerto Rico	6	1	*	757,613	1,128,736	1,516,808	1,631,266	2,076,698	2,002,851	2,110,798
Rhode Island	4	7	279,304	355,889	456,059	515,547	567,331	607,489	653,900	709,525
South Carolina	12	5	1,137,232	1,392,586	1,752,457	1,896,369	2,149,480	2,369,252	2,593,000	2,768,481
South Dakota	6	2	*	*	278,646	325,114	365,211	428,513	435,063	482,623
Tennessee	12	7	1,529,054	1,985,851	2,510,978	2,674,566	2,974,512	3,531,286	3,791,154	4,114,401
Texas	28	6	5,792,453	7,548,537	9,156,187	10,133,280	11,327,700	13,092,007	14,402,814	15,620,248
Utah	7	6	643,824	750,244	919,002	1,052,522	1,154,992	1,345,205	1,415,896	1,531,763
Vermont	4	14	*	*	*	*	*	*	295,971	315,382
Virgin Islands	*	*	*	0	*	*	*	*	*	*
Virginia	8	6	2,262,567	2,708,342	3,270,165	3,753,106	4,147,182	4,240,462	4,900,018	5,126,651
Washington	9	9	1,873,475	2,286,082	2,706,030	2,869,784	3,377,193	3,770,602	3,995,325	4,177,196
West Virginia	9	13	241,265	392,384	498,811	576,503	675,257	761,658	821,103	858,599
Wisconsin	12	6	1,525,818	1,698,520	2,229,389	2,396,562	2,723,985	2,997,029	3,191,190	3,355,951
Wyoming	8	5	127,634	*	194,665	191,939	295,706	302,203	330,567	358,593
Nationwide	155	6 %	79,696,083	101,043,219	123,990,857	138,878,293	157,042,082	181,105,135	192,053,067	203,669,128

* Data withheld to maintain firm confidentiality. Some data have been revised.

¹ For data through December 2004, only facilities-based wireless carriers with at least 10,000 mobile telephony subscribers per state were required to report data, and they were instructed to use billing addresses to determine subscriber counts by state. Starting with the June 2005 data, all facilities-based wireless carriers are required to report, and to use the area codes of telephone numbers provided to subscribers to determine subscriber counts by state.

² Percentage of mobile wireless subscribers receiving their service from a mobile wireless reseller.

Table 15
Percentage of Zip Codes with Competitive Local Exchange Carriers (CLECs)

Number of CLECs	2000	2001	2002	2004		2005	
	Dec	Dec	Dec	Jun	Dec	Jun	Dec
Zero	44.0 %	38.0 %	31.3 %	21.0 %	21.9 %	17.4 %	18.4 %
One	16.8	16.8	19.3	15.3	15.3	10.5	11.4
Two	10.4	10.0	10.4	9.8	11.6	7.6	7.6
Three	7.2	7.7	6.7	7.5	7.6	6.0	6.2
Four	5.5	6.1	6.3	6.1	5.7	4.8	4.7
Five	4.0	4.5	5.2	5.4	5.2	4.2	4.1
Six	3.0	3.8	4.4	5.6	4.4	3.4	3.6
Seven	2.3	2.9	3.5	5.4	4.2	3.1	3.3
Eight	1.7	2.2	2.9	5.4	3.7	3.1	2.9
Nine	1.4	2.1	2.6	4.0	3.2	2.8	2.7
Ten or More	3.7	5.9	7.3	14.7	17.3	36.9	35.0

Table 16
Percentage of Households in Zip Codes with Competitive Local Exchange Carriers

Number of CLECs	2000	2001	2002	2004		2005	
	Dec	Dec	Dec	Jun	Dec	Jun	Dec
Zero	11.8 %	8.8 %	5.8 %	3.0 %	3.1 %	2.2 %	2.4 %
One	10.6	8.5	8.2	4.8	4.6	2.1	2.3
Two	10.6	9.7	8.3	4.8	5.8	2.3	2.2
Three	11.6	10.8	7.0	4.9	4.7	2.2	2.3
Four	11.3	9.7	8.3	5.6	4.9	2.2	2.1
Five	9.3	8.8	8.4	5.7	6.1	2.2	2.2
Six	7.2	8.0	8.4	7.0	5.8	1.9	2.2
Seven	6.1	6.7	7.6	8.1	6.6	2.0	2.4
Eight	4.9	5.3	7.0	9.8	6.6	2.6	2.5
Nine	4.2	5.3	7.0	8.4	6.3	2.4	2.7
Ten or More	12.2	18.3	23.9	37.9	45.3	77.9	76.8

Demographic data are from Demographic Power Pack, Current Year Update (2000), MapInfo Corporation. Only LECs with at least 10,000 lines in a state were required to report through December 2004. Beginning with the June 2005 data all LECs are required to report. Figures may not add to 100% due to rounding.

Table 17
Percentage of Zip Codes with Competitive Local Exchange Carriers as of December 31, 2005

State	Number of CLECs								
	Zero	One - Three	Four	Five	Six	Seven	Eight	Nine	Ten or More
Alabama	8 %	27 %	5 %	5 %	5 %	6 %	4 %	4 %	36 %
Alaska	81	19	0	0	0	0	0	0	0
Arizona	13	24	6	3	4	3	4	3	42
Arkansas	27	45	6	5	3	1	1	2	10
California	7	16	4	4	3	3	2	2	59
Colorado	25	23	4	4	3	3	2	3	31
Connecticut	7	29	10	8	10	10	4	6	16
Delaware	2	2	0	10	0	3	2	7	74
District of Columbia	0	12	0	0	0	0	0	0	88
Florida	2	6	2	1	3	2	2	2	79
Georgia	9	22	4	4	4	3	3	2	50
Hawaii	14	58	10	16	2	0	0	0	0
Idaho	39	36	7	4	3	2	4	2	3
Illinois	24	32	3	2	2	3	2	1	31
Indiana	11	29	7	5	5	3	4	2	33
Iowa	37	50	2	1	2	2	2	1	2
Kansas	35	27	3	6	3	3	4	2	16
Kentucky	14	30	8	6	6	5	4	2	24
Louisiana	6	23	4	5	5	4	3	4	46
Maine	9	45	10	8	6	6	3	4	10
Maryland	0	7	5	3	5	5	6	3	65
Massachusetts	1	6	2	2	2	4	3	3	77
Michigan	7	21	5	5	5	5	5	3	44
Minnesota	30	37	4	3	2	3	3	2	16
Mississippi	0	13	5	8	8	8	6	7	45
Missouri	37	27	4	4	2	2	1	2	19
Montana	64	27	3	2	1	1	1	1	1
Nebraska	64	21	4	2	2	1	2	1	3
Nevada	24	20	4	5	4	7	4	6	26
New Hampshire	1	20	10	10	7	7	6	6	33
New Jersey	0	2	1	2	1	1	2	1	89
New Mexico	41	35	4	5	2	3	4	4	2
New York	4	13	4	4	4	4	3	4	60
North Carolina	6	25	7	6	5	5	5	4	36
North Dakota	73	22	1	1	1	0	0	1	1
Ohio	4	27	7	6	6	6	5	4	37
Oklahoma	36	21	4	4	3	2	3	2	27
Oregon	23	31	4	4	5	2	2	3	26
Pennsylvania	9	28	5	4	4	3	3	3	41
Puerto Rico	66	34	0	0	0	0	0	0	0
Rhode Island	0	12	4	4	5	4	7	11	53
South Carolina	12	17	6	5	4	5	4	4	43
South Dakota	58	34	2	1	2	2	0	0	1
Tennessee	14	17	4	5	3	3	4	4	47
Texas	15	21	4	3	2	3	2	2	48
Utah	27	24	4	6	3	3	1	3	29
Vermont	16	46	10	10	4	4	4	4	2
Virginia	8	32	8	6	6	4	4	3	30
Washington	20	27	4	4	3	3	2	2	35
West Virginia	19	45	10	8	4	3	4	2	4
Wisconsin	29	33	6	3	2	2	2	2	22
Wyoming	43	41	4	1	4	4	4	1	0
Nationwide	18 %	25 %	5 %	4 %	4 %	3 %	3 %	3 %	35 %

Table 18
CLEC-Owned End-User Switched Access Lines Served by Reporting Competitive Local Exchange Carriers
(In Thousands)

State	2000	2001		2002		2003		2004		2005	
	Dec	Jun	Dec	Jun	Dec	Jun	Dec	Jun	Dec	Jun	Dec
Alabama	39	40	18	6	50	68	76	76	89	70	72
Alaska	*	*	*	*	*	*	*	*	*	*	*
American Samoa	0	0	0	0	0	0	0	0	0	0	0
Arizona	50	132	164	194	211	279	351	409	440	511	645
Arkansas	*	*	*	*	49	*	46	46	46	68	68
California	674	762	910	890	891	888	1,025	1,042	1,050	1,204	1,280
Colorado	117	151	172	183	207	200	163	155	155	161	273
Connecticut	73	78	91	97	105	104	104	111	122	136	113
Delaware	*	0	0	*	*	*	*	*	*	*	3
District of Columbia	52	70	80	74	67	69	71	72	81	110	61
Florida	319	372	260	302	344	309	331	364	418	241	401
Georgia	191	184	167	161	197	192	180	182	254	201	139
Guam	0	0	0	0	0	0	0	0	0	0	0
Hawaii	0	*	*	*	*	*	*	*	*	15	25
Idaho	*	*	*	*	*	*	*	*	*	12	24
Illinois	325	416	467	477	446	403	392	400	488	474	407
Indiana	70	59	76	76	72	69	79	91	92	94	90
Iowa	25	21	33	34	37	40	38	40	42	59	61
Kansas	11	18	25	26	46	56	64	76	102	135	133
Kentucky	42	*	*	*	50	28	79	83	91	95	34
Louisiana	15	24	21	24	38	53	77	93	100	160	155
Maine	*	*	*	*	*	2	2	20	27	47	52
Maryland	65	83	30	30	24	28	94	116	155	78	60
Massachusetts	229	277	317	310	366	363	375	390	420	428	394
Michigan	218	113	113	121	104	85	108	106	160	235	102
Minnesota	59	61	80	114	153	163	167	169	182	203	242
Mississippi	19	11	6	*	*	3	4	5	8	19	18
Missouri	75	51	37	50	70	54	50	55	89	129	137
Montana	*	*	*	*	*	13	14	15	16	20	30
Nebraska	*	*	91	103	115	125	130	135	142	168	181
Nevada	*	37	*	*	35	28	33	30	32	35	38
New Hampshire	25	29	43	45	59	60	63	65	76	84	80
New Jersey	120	95	71	88	88	89	92	105	156	144	177
New Mexico	*	*	*	*	*	*	*	15	15	15	11
New York	546	579	682	608	432	402	374	418	449	591	879
North Carolina	88	111	70	75	77	96	74	101	156	187	238
North Dakota	*	*	*	*	*	*	6	8	8	12	16
Northern Mariana Isl.	0	0	0	0	0	0	0	0	0	0	0
Ohio	132	135	144	153	83	69	85	108	137	233	442
Oklahoma	71	77	89	115	114	111	174	138	178	188	205
Oregon	48	60	31	36	45	39	38	35	41	42	63
Pennsylvania	386	458	512	553	538	494	554	573	654	531	645
Puerto Rico	*	*	*	*	*	*	*	*	*	*	*
Rhode Island	*	45	62	76	90	100	116	131	151	171	*
South Carolina	49	26	7	7	20	25	25	28	38	56	73
South Dakota	*	*	*	*	*	26	35	*	*	25	79
Tennessee	109	117	92	56	103	95	90	94	124	84	146
Texas	367	418	414	406	426	430	436	462	590	659	677
Utah	73	77	72	80	91	80	73	68	76	62	86
Vermont	*	*	*	*	*	*	*	*	*	19	11
Virgin Islands	0	0	0	0	0	0	0	0	0	*	*
Virginia	132	179	203	221	275	285	438	492	494	373	430
Washington	97	115	156	161	178	155	144	149	147	157	178
West Virginia	*	*	*	*	*	*	*	*	6	9	10
Wisconsin	50	54	51	56	46	45	47	58	37	286	139
Wyoming	*	*	*	*	*	*	*	*	*	2	9
Total	5,217	5,776	6,072	6,236	6,479	6,370	7,045	7,483	8,503	9,124	10,100

* Data withheld to maintain firm confidentiality. Some data have been revised.

Only LECs with at least 10,000 lines in a state were required to report through December 2004. Beginning with the June 2005 data all LECs are required to report.

Table 19
UNEs Acquired from Other Carriers
(In Thousands)

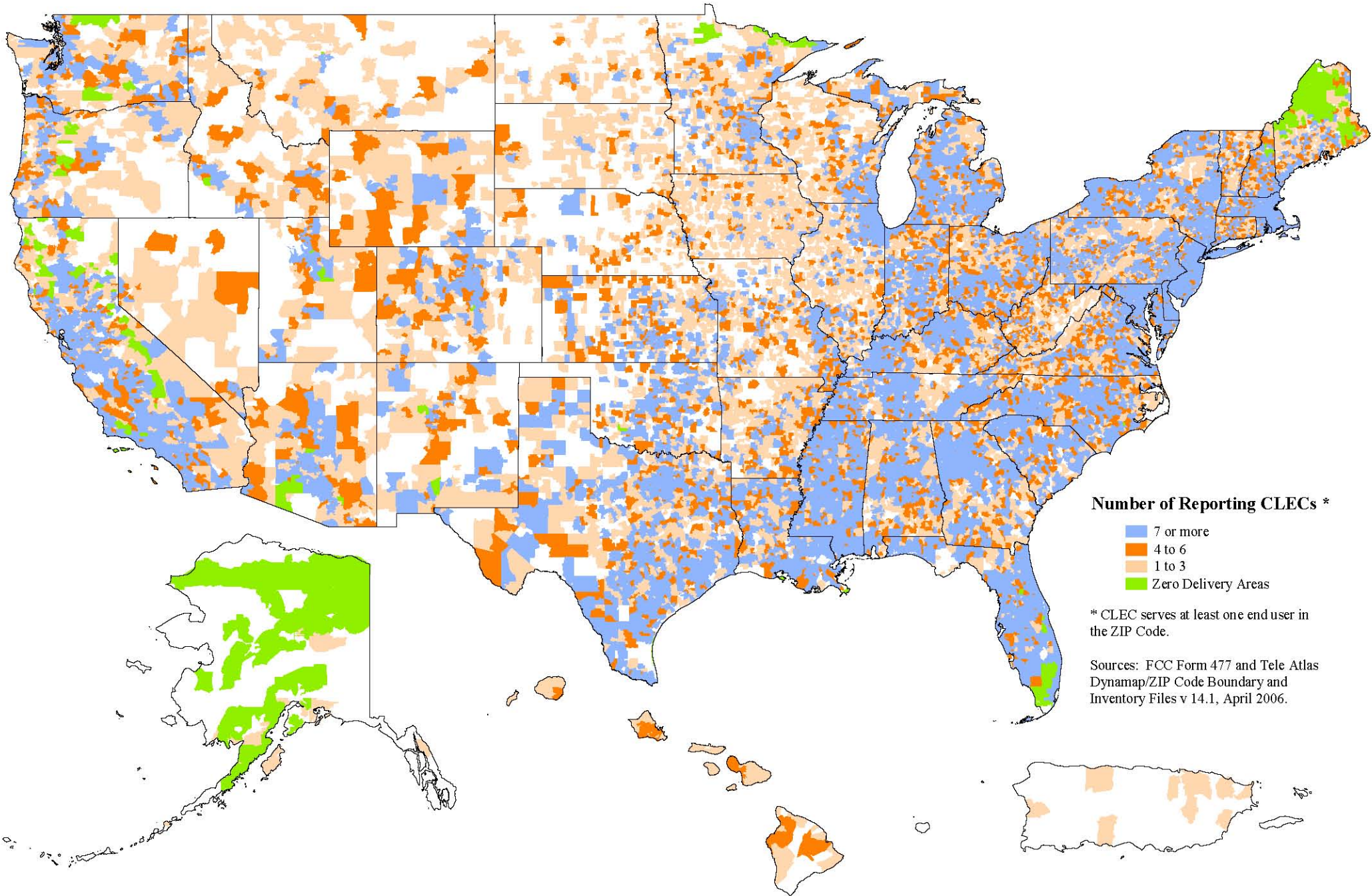
State	1999	2000		2001		2002		2003		2004		2005	
	Dec	Jun	Dec	Jun	Dec	Jun	Dec	Jun	Dec	Jun	Dec	Jun	Dec
Alabama	59	31	46	52	*	89	140	173	137	207	201	215	189
Alaska	*	*	*	*	*	*	*	*	*	*	*	*	*
American Samoa	0	0	0	0	0	0	0	0	0	0	0	0	0
Arizona	6	16	19	54	68	80	78	123	234	268	228	171	159
Arkansas	*	*	*	*	*	*	94	*	*	110	98	100	77
California	164	240	309	575	603	746	1,281	1,555	1,852	2,148	2,245	1,999	1,160
Colorado	14	22	99	140	148	161	154	187	222	234	199	243	222
Connecticut	*	*	*	*	7	18	42	47	68	93	101	110	90
Delaware	*	*	*	0	0	*	*	47	34	52	52	101	74
District of Columbia	*	*	13	34	10	42	47	60	63	82	62	74	62
Florida	186	113	186	252	377	482	849	852	871	1,020	1,037	929	866
Georgia	90	92	182	202	326	418	455	536	555	642	566	558	489
Guam	0	0	0	0	0	0	0	0	0	0	0	0	0
Hawaii	*	*	0	*	*	*	*	*	*	*	*	4	5
Idaho	0	0	*	*	*	*	*	*	*	26	25	51	38
Illinois	76	163	219	435	568	734	933	1,024	1,119	1,121	1,016	955	1,155
Indiana	16	31	56	66	79	122	158	228	326	357	328	332	228
Iowa	*	*	136	*	140	138	144	137	135	144	138	114	105
Kansas	*	21	33	43	103	132	190	206	201	215	208	202	151
Kentucky	*	*	*	*	*	*	26	51	66	112	103	135	118
Louisiana	46	14	22	52	42	46	94	120	110	156	170	219	161
Maine	*	*	*	*	*	*	*	*	46	63	68	84	67
Maryland	7	11	29	50	58	119	174	264	362	390	431	514	336
Massachusetts	8	14	49	88	117	102	161	260	391	416	429	460	340
Michigan	63	107	65	240	628	986	1,154	1,208	1,360	1,388	1,310	1,163	915
Minnesota	63	71	159	219	223	242	308	260	293	310	295	306	348
Mississippi	*	*	14	15	16	18	61	82	72	98	80	118	97
Missouri	30	30	37	61	110	157	204	217	240	322	260	282	208
Montana	*	*	*	*	*	*	*	4	*	*	5	16	15
Nebraska	*	*	*	*	29	30	33	37	41	43	41	21	*
Nevada	*	*	*	107	*	*	92	76	87	66	65	122	114
New Hampshire	*	*	2	12	14	23	46	57	63	81	83	97	80
New Jersey	24	25	51	82	93	110	415	682	925	987	997	1,015	499
New Mexico	*	*	*	*	*	*	*	*	*	47	47	30	23
New York	331	1,114	1,607	1,929	2,084	2,044	2,147	2,366	2,652	2,554	2,495	2,455	1,482
North Carolina	47	29	70	97	118	140	191	228	246	334	315	249	301
North Dakota	*	*	*	*	*	*	*	*	17	*	12	43	45
Northern Mariana Isl.	0	0	0	0	0	0	0	0	0	0	0	0	0
Ohio	72	67	101	103	121	278	469	584	736	759	662	652	449
Oklahoma	*	*	10	27	30	45	72	82	69	81	84	113	110
Oregon	1	3	11	31	75	75	99	93	166	191	219	164	224
Pennsylvania	92	130	292	494	516	589	612	666	776	899	907	1,100	877
Puerto Rico	0	*	*	*	*	*	*	*	*	*	*	*	*
Rhode Island	*	*	*	13	26	19	44	54	59	71	66	72	53
South Carolina	*	*	25	49	*	66	98	127	114	133	151	179	169
South Dakota	*	*	*	*	*	*	*	20	29	*	*	71	29
Tennessee	49	60	73	115	128	130	153	180	216	316	261	286	253
Texas	215	437	1,101	1,186	1,440	1,542	1,468	1,548	1,546	1,596	1,387	1,376	1,001
Utah	*	22	34	46	48	39	49	79	97	141	131	157	122
Vermont	*	*	*	*	*	*	*	*	*	*	*	30	25
Virgin Islands	0	0	0	0	0	0	0	0	0	0	0	*	*
Virginia	37	46	81	146	272	244	288	377	354	415	421	558	395
Washington	21	25	46	59	94	114	118	118	183	256	240	259	249
West Virginia	*	*	*	*	*	*	*	*	*	*	89	94	76
Wisconsin	55	82	108	160	209	273	352	420	499	515	506	308	430
Wyoming	*	*	*	*	*	*	*	*	*	*	*	26	22
Total	1,959	3,201	5,540	7,580	9,332	10,930	13,709	15,728	17,888	19,624	18,961	19,014	14,836

* Data withheld to maintain firm confidentiality. Some data have been revised.

Only LECs with at least 10,000 lines in a state were required to report through December 2004. Beginning with the June 2005 data all LECs are required to report.

Reporting CLECs by 5-Digit Geographical ZIP Code

(As of December 31, 2005)



Customer Response

Publication: *Local Telephone Competition: Status as of December 31, 2005*

You can help us provide the best possible information to the public by completing this form and returning it to the Industry Analysis and Technology Division of the FCC's Wireline Competition Bureau.

1. Please check the category that best describes you:

- press
- current telecommunications carrier
- potential telecommunications carrier
- business customer evaluating vendors/service options
- consultant, law firm, lobbyist
- other business customer
- academic/student
- residential customer
- FCC employee
- other federal government employee
- state or local government employee
- Other (please specify)

2. Please rate the report: Excellent Good Satisfactory Poor No opinion

- | | | | | | |
|----------------------|------------------------------|------------------------------|------------------------------|------------------------------|------------------------------|
| Data accuracy | (<input type="checkbox"/>) | (<input type="checkbox"/>) | (<input type="checkbox"/>) | (<input type="checkbox"/>) | (<input type="checkbox"/>) |
| Data presentation | (<input type="checkbox"/>) | (<input type="checkbox"/>) | (<input type="checkbox"/>) | (<input type="checkbox"/>) | (<input type="checkbox"/>) |
| Timeliness of data | (<input type="checkbox"/>) | (<input type="checkbox"/>) | (<input type="checkbox"/>) | (<input type="checkbox"/>) | (<input type="checkbox"/>) |
| Completeness of data | (<input type="checkbox"/>) | (<input type="checkbox"/>) | (<input type="checkbox"/>) | (<input type="checkbox"/>) | (<input type="checkbox"/>) |
| Text clarity | (<input type="checkbox"/>) | (<input type="checkbox"/>) | (<input type="checkbox"/>) | (<input type="checkbox"/>) | (<input type="checkbox"/>) |
| Completeness of text | (<input type="checkbox"/>) | (<input type="checkbox"/>) | (<input type="checkbox"/>) | (<input type="checkbox"/>) | (<input type="checkbox"/>) |

3. Overall, how do you rate this report? Excellent Good Satisfactory Poor No opinion

() () () () ()

4. How can this report be improved?

5. May we contact you to discuss possible improvements?

Name:

Telephone #:

To discuss the information in this report, contact: 202-418-0940 or for users of TTY equipment, call 202-418-0484		
Fax this response to	or	Mail this response to
202-418-0520		FCC/WCB/IATD Mail Stop 1600 F Washington, DC 20554