

# **Local Telephone Competition: Status as of June 30, 2006**

Industry Analysis and Technology Division  
Wireline Competition Bureau  
January 2007



This report is available for reference in the FCC's Reference Information Center, Courtyard Level, 445 12th Street, SW, Washington, DC. Copies may be purchased by contacting Best Copy and Printing, Inc., 445 12th Street, SW, Room CY-B402, Washington, DC 20554, telephone (800) 378-3160, or via their website at [www.bcpiweb.com](http://www.bcpiweb.com). The report can also be downloaded from the Wireline Competition Bureau Statistical Reports Internet site at [www.fcc.gov/wcb/stats](http://www.fcc.gov/wcb/stats).

## Local Telephone Competition: Status as of June 30, 2006

We present here summary statistics of the latest data on local telephone service competition in the United States as reported in the Commission's local competition and broadband data gathering program (FCC Form 477).<sup>1</sup> The summary statistics provide a snapshot of local telephone service competition based on switched access lines in service and state-specific mobile telephony service subscribers as of June 30, 2006.<sup>2</sup>

Twice a year, all incumbent local exchanges carriers (incumbent LECs) and competitive local exchange carriers (CLECs) are required to report to the Commission basic information about their local telephone service, and all facilities-based mobile telephony providers are required to provide information about their subscribers. Prior to June 2005, the FCC collected data from carriers with at least 10,000 switched access lines, or mobile telephony subscribers, in service in a particular state. Small carriers, many of whom serve rural areas with relatively small populations, were therefore underrepresented in the earlier data.<sup>3</sup> With the inclusion of these carriers, the number of incumbent LEC and CLEC holding companies and unaffiliated carriers reporting local telephone service information as of December 31, 2005 tripled, and the number of reporting facilities-based mobile telephony providers doubled.<sup>4</sup>

Based on the latest information now available, we summarize the following observations:

- End-user customers obtained local telephone service by utilizing approximately 142.2 million incumbent LEC switched access lines, 29.8 million CLEC switched access lines, and 217.4 million mobile telephony service subscriptions at the end of June 2006.<sup>5</sup> See Tables 1 and 14.

---

<sup>1</sup> *Local Competition and Broadband Reporting*, CC Docket No. 99-301, Report and Order, 15 FCC Rcd 7717 (2000); *Local Telephone Competition and Broadband Reporting*, WC Docket No. 04-141, Report and Order, 19 FCC Rcd 22340 (2004). During this data gathering program, qualifying providers file FCC Form 477 each year on March 1 (reporting data for the preceding December 31) and September 1 (reporting data for June 30 of the same year). An updated FCC Form 477, and instructions for that particular form, for each specific round of the data collection may be downloaded from the FCC Forms website at [www.fcc.gov/formpage.html](http://www.fcc.gov/formpage.html).

<sup>2</sup> Statistical summaries of the earlier Form 477 data collections appeared in previous releases of the *Local Telephone Competition* report, available at [www.fcc.gov/wcb/iatd/comp.html](http://www.fcc.gov/wcb/iatd/comp.html).

<sup>3</sup> As of December 31, 2005, filers with fewer than 10,000 switched access lines in a state (including entities that previously filed on a voluntary basis) reported about 4.5 million lines (about 2.0 million incumbent LEC lines and about 2.5 million CLEC lines). By contrast, the data filed for December 2004 included about 0.6 million lines filed on a voluntary basis (about 0.2 million incumbent LEC lines and about 0.4 million CLEC lines). Mobile telephony service providers with fewer than 10,000 subscribers in a state reported about 364,000 subscribers as of December 31, 2005. Such filers reported (on a voluntary basis) about 69,000 subscribers a year earlier.

<sup>4</sup> The nationwide number of CLEC holding companies and unaffiliated entities reporting local telephone service information increased from 149 to 382, and the number of incumbent LEC entities increased from 190 to 807. See Tables 3 and 4. The number of entities reporting mobile telephony subscribers increased from 76 to 155.

<sup>5</sup> For this report, end-user switched access lines reported for the incumbent LEC operations of certain entities (i.e., AT&T Inc. and Verizon Communications Inc.) have been increased to reflect merger with a CLEC – to the extent (continued....)

- CLECs reported 29.8 million (or 17.3%) of the approximately 172.0 million nationwide end-user switched access lines in service at the end of June 2006, compared to 31.4 million (or 17.9%) of the 175.2 million lines reported six months earlier. See Table 1.
- About 42% of switched access lines in service to CLEC end users served residential customers at the end of June 2006, whereas about 65% of switched access lines in service to incumbent LEC end users served residential customers. See Table 2.
- CLECs reported providing 36% of their end-user switched access lines over their own local loop facilities,<sup>6</sup> 42% by using unbundled network elements (UNEs) they leased from other carriers, and 22% through resale arrangements with unaffiliated carriers.<sup>7</sup> See Table 3.
- Incumbent LECs reported providing about 22% fewer UNE loops with switching (referred to as the UNE-Platform) to unaffiliated carriers at the end of June 2006 than they reported six months earlier (8.4 million compared to 10.8 million) and about 1% fewer UNE loops without switching (4.4 million compared to 4.5 million). See Table 4.
- About 6.0 million end-user switched access lines were provided by CLECs over coaxial cable connections. These lines represent about 56% of the 10.7 million end-user switched access lines that CLECs reported providing over their own local loop facilities, about 20% of all end-user switched access lines that CLECs reported, about 48% of CLEC lines to residential end users, about 3% of total end-user switched access lines, and about 6% of total residential switched access lines. See Tables 2, 3, and 5.
- Incumbent LECs were the presubscribed interstate long distance carrier for 51% of the switched access lines they provided to end users, while CLECs were the interstate long distance carrier for 76% of their switched access lines. See Table 6.

(Continued from previous page) \_\_\_\_\_

the CLEC operated in the incumbent LEC's service territory – and lines reported for the CLEC operations of these entities have been decreased by the same amount. Such adjustments are necessary when the merged entity treats the former CLEC operations as a separate business unit, and files a separate Form 477 for that business unit. SBC Communications, Inc. (SBC) and AT&T Corp. merged to form AT&T Inc. in November 2005. Verizon Communications Inc. and MCI, Inc. merged in January 2006.

<sup>6</sup> Form 477 filers report that end-user switched access lines are provided over their own local loop facilities when the filer (including affiliates) owns the local loop to the end user's premises. Therefore, unbundled network elements (UNEs) or services for resale that a CLEC acquires from an incumbent LEC become own-facilities lines, for purposes of Form 477, if the two entities merge. As previously noted, such lines are treated as incumbent LEC lines in this report, rather than as CLEC lines.

<sup>7</sup> CLEC "resale" lines should include lines that the CLEC provides by using special access lines or other facilities that it obtains from unaffiliated ILECs or CLECs as tariffed services or under commercial agreements.

- The Commission’s data collection program collates information about CLEC local telephone service lines (and the CLEC share of total local telephone service lines) in individual states. Relatively large numbers of CLEC lines are associated with the more populous states.<sup>8</sup> With respect to the calculated CLEC share of switched access lines in service, however, some less populous states, such as Nebraska, New Hampshire, Rhode Island, South Dakota, and Utah had larger CLEC shares than some more populous states, such as California, Florida, Ohio, and Texas. See Tables 7 - 10.<sup>9</sup>
- Among the 50 states, there were fewer than 10 reporting CLECs only in Alaska and Hawaii. See Table 13.
- Mobile telephony service providers reported 217.4 million subscribers at the end of June 2006, which is 25.4 million, or 13%, more than a year earlier. About 7% of these subscribers were billed by mobile telephony service resellers.<sup>10</sup> See Table 14.
- At least one CLEC was serving customers in 82% of the nation’s Zip Codes at the end of June 2006. About 98% of United States households resided in those Zip Codes. Moreover, multiple carriers reported providing local telephone service in the major population centers of the country. See Table 15 - 17, and the map that follows Table 19.

As other information from FCC Form 477 becomes available, it will be routinely posted on the Commission’s Internet site. We invite users of the information presented in this statistical summary to provide suggestions for improved data collection and analysis by:

- Using the attached customer response form,
- E-mailing comments to James.Eisner@fcc.gov,
- Calling the Industry Analysis and Technology Division of the Wireline Competition Bureau at (202) 418-0940, or
- Participating in any formal proceedings undertaken by the Commission to solicit comments for improvement of FCC Form 477.

---

<sup>8</sup> The largest numbers of CLEC lines are reported for New York (3.0 million lines) and California (2.9 million lines), the third and first most populous states, respectively.

<sup>9</sup> CLEC shares appearing in Table 8 are based on CLEC and ILEC lines in Tables 9 and 10.

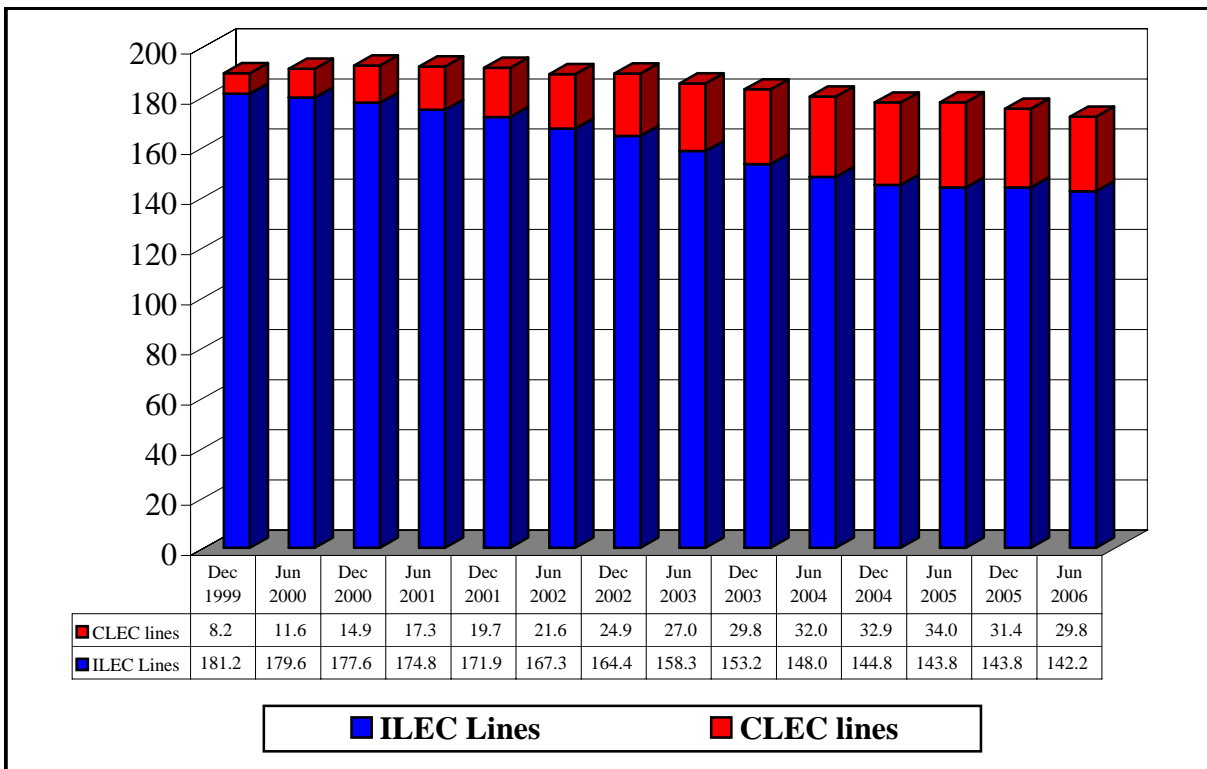
<sup>10</sup> The mobile “resale” percentage should not include any subscribers that the facilities-based provider serves on a pre-paid basis. For reporting purposes, a “facilities-based” mobile telephony service provider serves subscribers using spectrum licenses that it has obtained or manages.

**Table 1**  
**End-User Switched Access Lines Reported**

Date	ILEC Lines	CLEC Lines	Total	CLEC Share
Dec 1999	181,202,853	8,194,243	189,397,096	4.3 %
Jun 2000	179,648,725	11,557,381	191,206,106	6.0
Dec 2000	177,561,022	14,871,409	192,432,431	7.7
Jun 2001	174,752,275	17,274,727	192,027,002	9.0
Dec 2001	171,917,359	19,653,441	191,570,800	10.3
Jun 2002	167,330,006	21,644,928	188,974,934	11.5
Dec 2002	164,386,452	24,863,691	189,250,143	13.1
Jun 2003	158,274,538	26,985,345	185,259,883	14.6
Dec 2003	153,157,843	29,775,438	182,933,281	16.3
Jun 2004	147,993,218	32,033,915	180,027,133	17.8
Dec 2004	144,809,899	32,880,812	177,690,711	18.5
Jun 2005	143,757,708	33,975,336	177,733,044	19.1
Dec 2005	143,773,101	31,387,839	175,160,940	17.9
Jun 2006	142,249,668	29,782,241	172,031,909	17.3

Only LECs with at least 10,000 lines in a state were required to report through December 2004. Beginning with the June 2005 data all LECs are required to report. Some data have been revised for June and December 2005.

**Chart 1**  
**End-User Switched Access Lines Reported**  
**(Lines in Millions)**



**Table 2**  
**End-User Switched Access Lines by Customer Type**

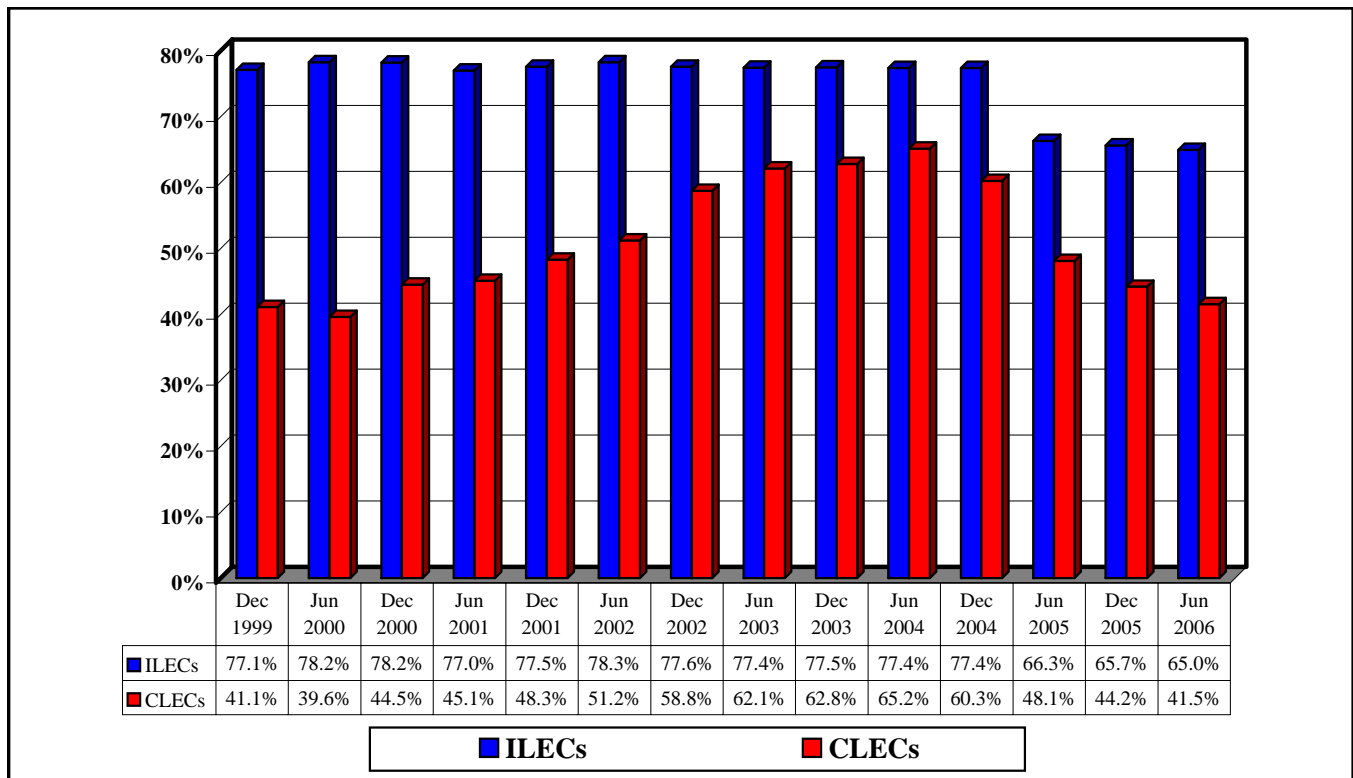
Date	Reporting ILECs			Reporting CLECs		
	Residential <sup>1</sup>	Business <sup>2</sup>	% Residential	Residential <sup>1</sup>	Business <sup>2</sup>	% Residential
Dec 1999	139,694,481	41,508,372	77.1 %	3,368,702	4,825,541	41.1 %
Jun 2000	140,566,144	39,082,581	78.2	4,579,501	6,977,880	39.6
Dec 2000	138,824,111	38,736,911	78.2	6,620,471	8,250,938	44.5
Jun 2001	134,530,884	40,221,391	77.0	7,793,071	9,481,656	45.1
Dec 2001	133,320,119	38,597,240	77.5	9,489,049	10,164,392	48.3
Jun 2002	130,937,328	36,392,678	78.3	11,080,676	10,564,252	51.2
Dec 2002	127,494,698	36,891,754	77.6	14,608,495	10,255,196	58.8
Jun 2003	122,573,530	35,701,008	77.4	16,770,561	10,214,784	62.1
Dec 2003	118,658,867	34,498,976	77.5	18,702,229	11,073,209	62.8
Jun 2004	114,533,368	33,459,850	77.4	20,871,756	11,162,159	65.2
Dec 2004	112,054,420	32,755,479	77.4	19,811,711	13,069,101	60.3
Jun 2005	95,315,689	48,442,019	66.3	16,338,117	17,637,219	48.1
Dec 2005	94,392,526	49,380,575	65.7	13,873,331	17,514,508	44.2
Jun 2006	92,414,935	49,834,733	65.0	12,372,950	17,409,291	41.5

Only LECs with at least 10,000 lines in a state were required to report through December 2004. Beginning with the June 2005 data all LECs are required to report. Some data have been revised for June and December 2005.

<sup>1</sup> Included small business lines through December 2004.

<sup>2</sup> Excluded small business lines through December 2004.

**Chart 2**  
**Percent of Lines That Serve Residential Customers <sup>1</sup>**



<sup>1</sup> Included small business lines through December 2004.

**Table 3**  
**Reporting Competitive Local Exchange Carriers**  
**(End-User Switched Access Lines in Thousands)**

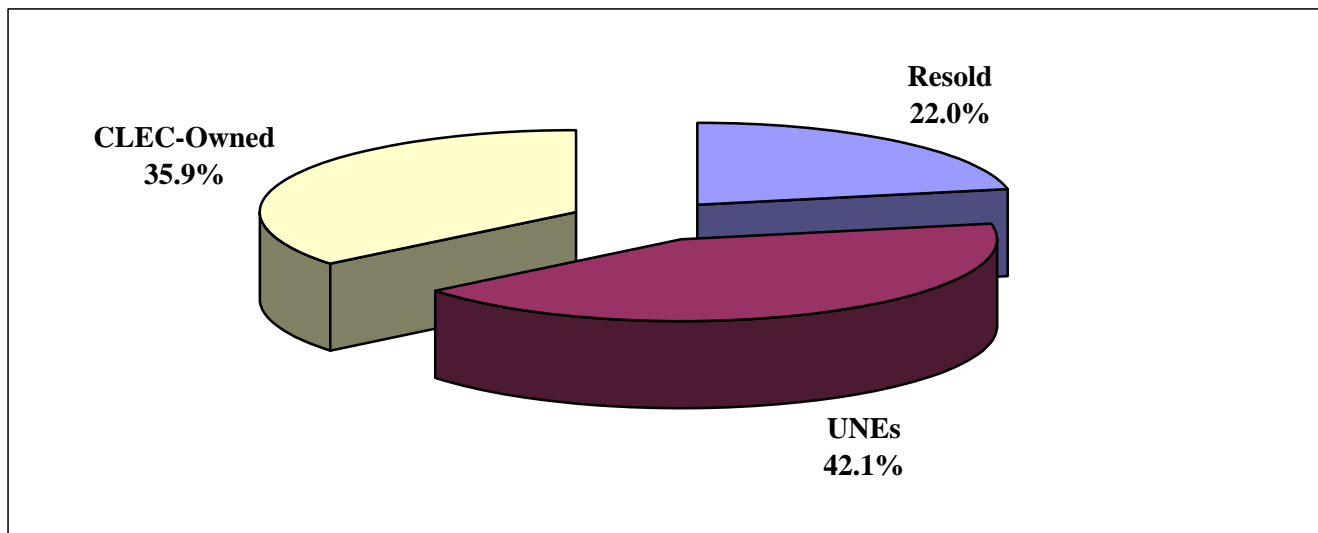
Date	CLECs Reporting	Total End-User Lines	Acquired from Other Carriers		CLEC-Owned	Percent		
			Resold Lines	UNEs <sup>1</sup>	Lines <sup>2</sup>	Resold	UNEs	CLEC-Owned
Dec 1999	81	8,194	3,513	1,959	2,723	42.9%	23.9%	33.2%
Jun 2000	78	11,557	4,315	3,201	4,042	37.3	27.7	35.0
Dec 2000	89	14,871	4,114	5,540	5,217	27.7	37.3	35.1
Jun 2001	91	17,275	3,919	7,580	5,776	22.7	43.9	33.4
Dec 2001	94	19,653	4,250	9,332	6,072	21.6	47.5	30.9
Jun 2002	96	21,645	4,478	10,930	6,236	20.7	50.5	28.8
Dec 2002	112	24,864	4,677	13,709	6,479	18.8	55.1	26.1
Jun 2003	125	26,985	4,887	15,728	6,370	18.1	58.3	23.6
Dec 2003	136	29,775	4,842	17,888	7,045	16.3	60.1	23.7
Jun 2004	137	32,034	4,927	19,624	7,483	15.4	61.3	23.4
Dec 2004	149	32,881	5,417	18,961	8,503	16.5	57.7	25.9
Jun 2005	326	33,975	5,826	19,025	9,124	17.1	56.0	26.9
Dec 2005	382	31,388	6,704	14,521	10,163	21.4	46.3	32.4
Jun 2006	399	29,782	6,549	12,546	10,687	22.0	42.1	35.9

Only LECs with at least 10,000 lines in a state were required to report through December 2004. Beginning with the June 2005 data all LECs are required to report. Figures may not add to totals due to rounding. Some data have been revised for June and December 2005.

<sup>1</sup> Includes unbundled network element (UNE) loops leased from an unaffiliated carrier on a stand-alone basis and also UNE loops leased in combination with UNE switching or any other unbundled network element.

<sup>2</sup> Lines provided over CLEC-owned "last-mile" facilities.

**Chart 3**  
**Competitive Local Exchange Carriers' End-User Lines**



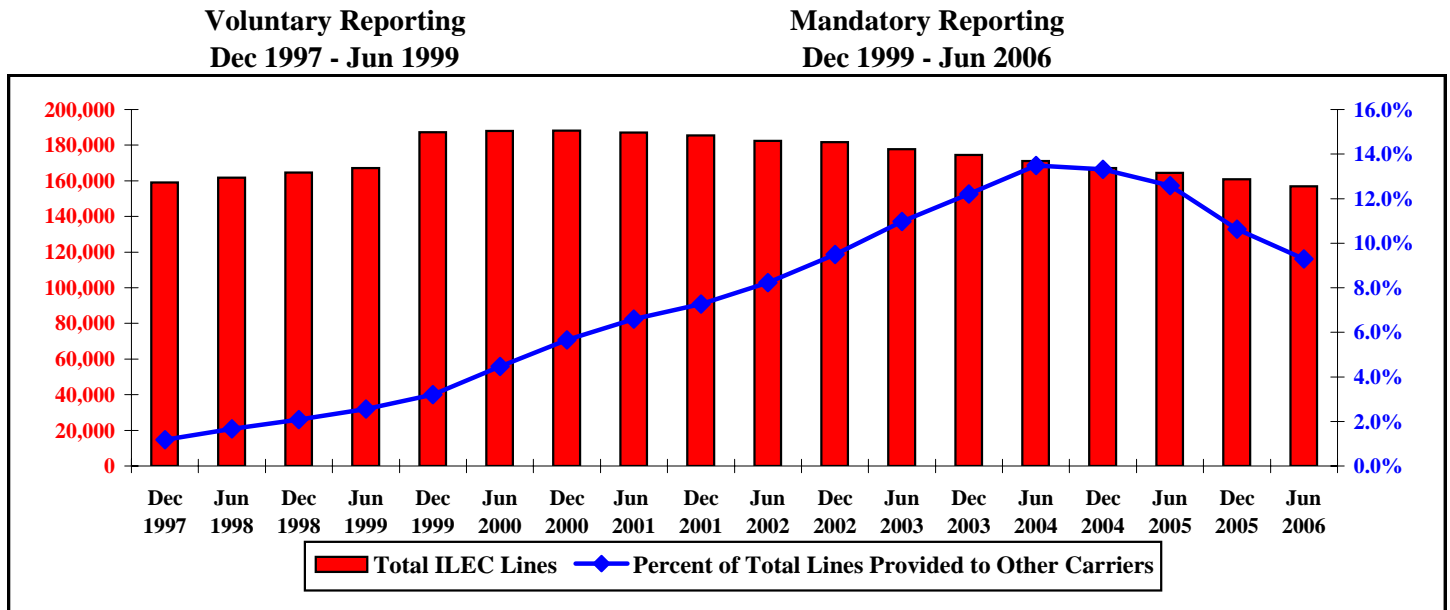
**Table 4**  
**Reporting Incumbent Local Exchange Carriers**  
**(Switched Access Lines in Thousands)**

Date <sup>1</sup>	ILECs Reporting	Total Lines	End-User Lines	Provided to Other Carriers					
				Resold Lines	UNEs			Total UNEs & Resold Lines	Percent of Total Lines
					Without Switching	With Switching	Total UNEs		
Dec 1997	9	159,008	157,132	1,743			133	1,876	1.2 %
Jun 1998	8	161,810	159,118	2,448			244	2,692	1.7
Dec 1998	7	164,614	161,191	3,062			361	3,423	2.1
Jun 1999	7	167,177	162,909	3,583			685	4,268	2.6
Dec 1999	168	187,190	181,203	4,494	1,004	489	1,493	5,987	3.2
Jun 2000	159	188,058	179,649	5,098	1,696	1,616	3,312	8,409	4.5
Dec 2000	166	188,223	177,561	5,388	2,436	2,838	5,274	10,662	5.7
Jun 2001	156	187,092	174,752	4,417	3,161	4,761	7,922	12,340	6.6
Dec 2001	164	185,391	171,917	4,014	3,679	5,781	9,460	13,474	7.3
Jun 2002	166	182,345	167,330	3,475	4,061	7,478	11,540	15,015	8.2
Dec 2002	174	181,616	164,386	2,743	4,259	10,227	14,487	17,229	9.5
Jun 2003	181	177,770	158,275	2,232	4,227	13,036	17,263	19,495	11.0
Dec 2003	185	174,453	153,158	1,833	4,287	15,176	19,463	21,296	12.2
Jun 2004	185	171,050	147,993	1,600	4,322	17,136	21,458	23,057	13.5
Dec 2004	190	167,063	144,810	1,490	4,217	16,546	20,763	22,253	13.3
Jun 2005	757	164,449	143,758	1,796	4,300	14,596	18,895	20,691	12.6
Dec 2005	807	160,881	143,773	1,793	4,469	10,846	15,315	17,108	10.6
Jun 2006	804	156,828	142,250	1,723	4,413	8,443	12,856	14,579	9.3

Figures may not add to totals due to rounding. Some data for December 2005 have been revised.

<sup>1</sup> Data prior to December 1999 are from Common Carrier Bureau voluntary surveys. Only LECs with at least 10,000 lines in a state were required to report data for December 1999 through December 2004, after which all LECs are required to report.

**Chart 4**  
**ILEC Lines and the Percent Provided to Other Carriers**



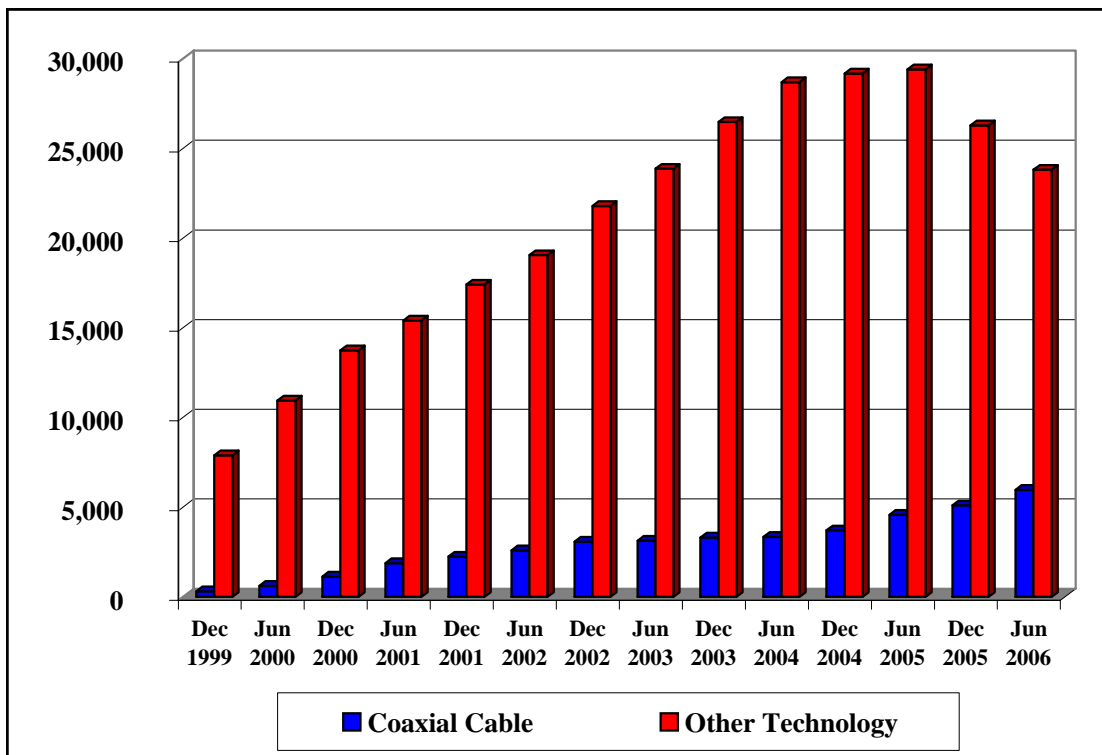


**Table 5**  
**Competitive Local Exchange Carrier Lines by Type of Technology**  
**(End-User Switched Access Lines in Thousands)**

Date	Coaxial Cable	Other Technologies	Total	Percent Coaxial Cable
Dec 1999	308	7,886	8,194	3.8 %
Jun 2000	614	10,943	11,557	5.3
Dec 2000	1,125	13,746	14,871	7.6
Jun 2001	1,876	15,399	17,275	10.9
Dec 2001	2,246	17,408	19,653	11.4
Jun 2002	2,597	19,048	21,645	12.0
Dec 2002	3,071	21,793	24,864	12.4
Jun 2003	3,123	23,863	26,985	11.6
Dec 2003	3,301	26,474	29,775	11.1
Jun 2004	3,338	28,696	32,034	10.4
Dec 2004	3,706	29,174	32,881	11.3
Jun 2005	4,571	29,404	33,975	13.5
Dec 2005	5,100	26,287	31,388	16.2
Jun 2006	5,969	23,813	29,782	20.0

Only LECs with at least 10,000 lines in a state were required to report through December 2004. Beginning with the June 2005 data all LECs are required to report. Some data have been revised for June and December 2005.

**Chart 5**  
**Competitive Local Exchange Carrier Lines by Type of Technology**  
**(End-User Switched Access Lines in Thousands)**



**Table 6**  
**Presubscribed Interstate Long Distance Lines**  
**(In Thousands)**

	<b>June 30, 2006</b>				
	<b>RBOC</b>	<b>Other ILEC</b>	<b>ILEC Total</b>	<b>CLEC</b>	<b>Total</b>
<b>Residential</b>					
Presubscribed	44,696	9,567	54,262	10,533	64,795
Not Presubscribed	31,152	7,000	38,153	1,840	39,993
All Lines	75,848	16,567	92,415	12,373	104,788
Percent Presubscribed	59%	58%	59%	85%	62%
<b>Business</b>					
Presubscribed	16,586	2,383	18,969	12,000	30,969
Not Presubscribed	26,895	3,970	30,865	5,409	36,275
All Lines	43,481	6,354	49,835	17,409	67,244
Percent Presubscribed	38%	38%	38%	69%	46%
<b>Total</b>					
Presubscribed	61,282	11,950	73,232	22,533	95,765
Not Presubscribed	58,047	10,971	69,018	7,249	76,267
All Lines	119,329	22,921	142,250	29,782	172,032
Percent Presubscribed	51%	52%	51%	76%	56%
	<b>December 31, 2005</b>				
	<b>RBOC</b>	<b>Other ILEC</b>	<b>ILEC Total</b>	<b>CLEC</b>	<b>Total</b>
<b>Residential</b>					
Presubscribed	43,429	9,755	53,184	12,272	65,456
Not Presubscribed	33,875	7,334	41,209	1,602	42,810
All Lines	77,303	17,089	94,393	13,873	108,266
Percent Presubscribed	56%	57%	56%	88%	60%
<b>Business</b>					
Presubscribed	14,508	2,470	16,978	12,380	29,358
Not Presubscribed	28,468	3,934	32,402	5,135	37,537
All Lines	42,976	6,404	49,381	17,515	66,895
Percent Presubscribed	34%	39%	34%	71%	44%
<b>Total</b>					
Presubscribed	57,937	12,225	70,162	24,652	94,814
Not Presubscribed	62,343	11,268	73,611	6,736	80,347
All Lines	120,280	23,493	143,773	31,388	175,161
Percent Presubscribed	48%	52%	49%	79%	54%

Figures may not add to totals due to rounding. Data for December 2005 have been revised.

**Table 7**  
**End-User Switched Access Lines Served by Reporting Local Exchange Carriers**  
**(As of June 30, 2006)**

<b>State</b>	<b>ILECs</b>	<b>CLECs</b>	<b>Total</b>	<b>CLEC Share</b>
Alabama	1,978,871	365,944	2,344,815	16 %
Alaska	324,892	116,432	441,324	26
American Samoa	11,008	0	11,008	0
Arizona	2,226,531	970,453	3,196,984	30
Arkansas	1,192,839	162,525	1,355,364	12
California	19,479,382	2,900,279	22,379,661	13
Colorado	2,276,358	528,727	2,805,085	19
Connecticut	1,928,048	261,681	2,189,729	12
Delaware	467,676	101,513	569,189	18
District of Columbia	891,832	144,600	1,036,432	14
Florida	9,013,194	1,617,538	10,630,732	15
Georgia	3,843,615	909,236	4,752,851	19
Guam	67,721	0	67,721	0
Hawaii	608,403	60,696	669,099	9
Idaho	666,382	80,698	747,080	11
Illinois	6,354,337	1,139,239	7,493,576	15
Indiana	3,079,875	338,113	3,417,988	10
Iowa	1,302,210	229,603	1,531,813	15
Kansas	1,100,313	346,533	1,446,846	24
Kentucky	1,732,044	337,265	2,069,309	16
Louisiana	1,800,472	394,199	2,194,671	18
Maine	692,360	134,610	826,970	16
Maryland	3,166,012	590,557	3,756,569	16
Massachusetts	3,075,544	978,953	4,054,497	24
Michigan	4,490,783	992,598	5,483,381	18
Minnesota	2,273,378	675,623	2,949,001	23
Mississippi	1,089,448	161,058	1,250,506	13
Missouri	2,841,990	425,768	3,267,758	13
Montana	460,058	61,726	521,784	12
Nebraska	661,351	244,058	905,409	27
Nevada	1,233,166	245,553	1,478,719	17
New Hampshire	624,466	195,539	820,005	24
New Jersey	4,784,134	993,630	5,777,764	17
New Mexico	865,466	76,512	941,978	8
New York	8,285,874	3,043,468	11,329,342	27
North Carolina	4,059,971	695,429	4,755,400	15
North Dakota	271,969	68,351	340,320	20
Northern Mariana Islands	21,313	0	21,313	0
Ohio	5,367,588	951,812	6,319,400	15
Oklahoma	1,472,856	361,715	1,834,571	20
Oregon	1,627,341	305,519	1,932,860	16
Pennsylvania	6,385,263	1,572,224	7,957,487	20
Puerto Rico	1,035,002	*	*	*
Rhode Island	362,993	275,526	638,519	43
South Carolina	1,907,925	329,943	2,237,868	15
South Dakota	279,589	135,275	414,864	33
Tennessee	2,675,649	575,957	3,251,606	18
Texas	9,958,460	1,905,521	11,863,981	16
Utah	915,178	281,796	1,196,974	24
Vermont	369,731	49,094	418,825	12
Virgin Islands	69,272	*	*	*
Virginia	3,818,918	1,046,894	4,865,812	22
Washington	2,993,977	506,360	3,500,337	14
West Virginia	852,152	117,009	969,161	12
Wisconsin	2,669,652	611,912	3,281,564	19
Wyoming	244,836	39,443	284,279	14
Nationwide	142,249,668	29,782,241	172,031,909	17 %

\* Data withheld to maintain firm confidentiality.

**Table 8**  
**Competitive Local Exchange Carrier Share of End-User Switched Access Lines**

State	2000		2001		2002		2003		2004		2005		2006
	Jun	Dec	Jun	Dec	Jun	Dec	Jun	Dec	Jun	Dec	Jun	Dec	Jun
Alabama	3 %	4 %	5 %	5 %	5 %	9 %	11 %	13 %	15 %	16 %	16 %	15 %	16 %
Alaska	*	*	*	*	*	*	*	*	*	*	*	*	26
American Samoa	NA	NA	NA	NA	NA	NA	NA	NA	NA	NA	0	0	0
Arizona	5	5	7	9	11	12	16	22	25	25	27	30	30
Arkansas	*	*	*	*	*	10	*	11	12	12	13	11	12
California	5	6	7	8	9	11	13	15	16	17	18	13	13
Colorado	7	9	10	13	14	15	16	17	17	16	17	20	19
Connecticut	5	6	7	7	9	9	10	10	11	13	14	11	12
Delaware	*	*	0	0	*	*	9	12	16	16	20	20	18
District of Columbia	7	9	12	13	16	14	16	17	19	19	20	17	14
Florida	6	6	7	7	9	13	13	14	16	16	16	17	15
Georgia	6	8	10	11	13	15	17	18	19	20	21	18	19
Guam	NA	NA	NA	NA	NA	NA	NA	NA	NA	NA	NA	0	0
Hawaii	*	0	*	*	*	*	*	*	*	*	6	7	9
Idaho	0	*	*	*	*	*	5	6	7	7	10	10	11
Illinois	7	9	13	15	17	19	19	20	21	22	20	15	15
Indiana	4	5	5	5	7	8	9	13	14	13	14	10	10
Iowa	9	11	11	12	12	13	13	13	14	14	14	14	15
Kansas	5	7	8	9	12	17	21	21	22	24	25	21	24
Kentucky	*	3	*	*	*	4	5	8	11	11	14	15	16
Louisiana	2	3	4	4	5	7	9	10	12	14	19	17	18
Maine	*	*	*	*	*	*	8	10	14	18	20	20	16
Maryland	3	4	6	4	6	7	10	14	16	18	18	18	16
Massachusetts	8	11	12	15	16	16	18	21	23	25	25	25	24
Michigan	5	6	9	13	18	21	22	25	26	26	25	19	18
Minnesota	7	9	11	13	14	17	17	19	20	21	21	24	23
Mississippi	*	4	4	3	2	6	7	9	10	10	14	12	13
Missouri	5	6	6	7	8	10	10	11	13	13	14	11	13
Montana	*	*	*	*	*	*	3	4	4	4	8	10	12
Nebraska	*	*	*	12	16	18	20	21	22	25	25	26	27
Nevada	*	*	10	*	*	11	9	10	11	11	13	13	17
New Hampshire	*	6	8	10	13	14	16	17	20	23	25	25	24
New Jersey	4	5	4	5	6	10	15	19	20	22	22	21	17
New Mexico	*	*	*	*	*	*	*	*	8	8	8	7	8
New York	16	20	23	25	25	24	27	28	30	30	30	31	27
North Carolina	4	4	6	6	6	8	9	9	11	13	13	15	15
North Dakota	*	*	*	*	*	*	*	8	8	7	20	19	20
Northern Mariana Isl.	NA	NA	NA	NA	NA	NA	NA	NA	NA	NA	NA	0	0
Ohio	4	4	4	5	7	9	11	14	15	15	15	15	15
Oklahoma	*	5	6	8	10	11	11	14	13	16	18	18	20
Oregon	3	4	5	7	7	9	8	12	13	16	13	19	16
Pennsylvania	8	10	13	14	15	16	17	19	20	22	23	23	20
Puerto Rico	*	*	*	*	*	*	*	*	*	*	*	*	*
Rhode Island	*	*	10	16	18	21	25	28	32	35	40	42	43
South Carolina	*	4	4	3	5	7	9	9	10	11	13	13	15
South Dakota	*	*	*	*	*	*	14	18	*	*	30	33	33
Tennessee	6	6	8	8	7	9	10	11	14	15	16	17	18
Texas	7	13	14	16	16	17	18	18	19	19	19	16	16
Utah	6	10	11	13	13	15	19	20	23	24	23	22	24
Vermont	*	*	*	*	*	*	*	*	*	*	14	12	12
Virgin Islands	0	0	0	0	0	0	0	0	0	0	*	*	*
Virginia	5	7	9	11	12	12	14	17	20	21	21	22	22
Washington	5	6	6	8	9	10	10	11	13	14	14	14	14
West Virginia	*	*	*	*	*	*	*	*	*	11	12	12	12
Wisconsin	7	8	9	11	12	13	15	18	19	18	19	18	19
Wyoming	*	*	*	*	*	*	*	*	*	*	11	12	14
Nationwide	6 %	8 %	9 %	10 %	11 %	13 %	15 %	16 %	18 %	18 %	19 %	18 %	17 %

\* Data withheld to maintain firm confidentiality. NA is an abbreviation for not applicable. Some data have been revised for June and December 2005.

Only LECs with at least 10,000 lines in a state were required to report through December 2004. Beginning with the June 2005 data all LECs are required to report.

**Table 9**  
**End-User Switched Access Lines Served by Reporting Competitive Local Exchange Carriers**

State	2000	2001	2002	2003	2004		2005		2006
	Jun	Jun	Jun	Jun	Jun	Dec	Jun	Dec	Jun
Alabama	78,525	121,059	118,721	265,556	365,060	369,923	393,856	359,149	365,944
Alaska	*	*	*	*	*	*	*	*	116,432
American Samoa	0	0	0	0	0	0	0	0	0
Arizona	155,657	231,777	354,592	519,128	814,194	792,272	864,526	978,582	970,453
Arkansas	*	*	*	*	162,996	151,118	181,656	152,089	162,525
California	1,317,414	1,668,232	2,158,878	3,046,959	3,774,501	3,905,815	4,030,126	3,023,367	2,900,279
Colorado	204,608	325,983	434,125	495,007	498,583	473,193	496,728	590,821	528,727
Connecticut	136,086	164,379	222,815	234,372	272,385	300,221	316,131	251,351	261,681
Delaware	*	0	*	53,473	92,810	95,464	121,800	118,235	101,513
District of Columbia	72,696	124,630	161,114	174,584	215,421	211,752	222,977	172,671	144,600
Florida	670,714	864,892	1,035,417	1,552,996	1,785,001	1,818,671	1,744,981	1,868,560	1,617,538
Georgia	327,881	515,730	704,651	861,156	977,358	1,002,671	1,032,383	886,413	909,236
Guam	0	0	0	0	0	0	0	0	0
Hawaii	*	*	*	*	*	*	38,447	49,317	60,696
Idaho	0	*	*	33,864	47,398	47,442	77,018	75,951	80,698
Illinois	590,208	1,113,112	1,468,057	1,616,765	1,672,522	1,712,232	1,601,784	1,135,562	1,139,239
Indiana	156,280	180,221	252,722	348,159	501,936	472,491	493,450	359,622	338,113
Iowa	140,706	164,637	190,869	195,860	199,115	195,144	216,229	221,758	229,603
Kansas	84,823	121,294	176,322	318,862	316,946	335,946	362,494	301,121	346,533
Kentucky	*	*	*	97,288	218,810	220,362	302,425	306,370	337,265
Louisiana	57,617	108,820	115,220	212,363	283,333	323,623	459,748	365,473	394,199
Maine	*	*	*	70,275	113,957	143,207	168,895	163,818	134,610
Maryland	131,272	211,499	232,793	379,961	615,757	693,940	716,741	690,791	590,557
Massachusetts	384,548	576,442	736,932	846,276	997,760	1,089,437	1,089,068	1,036,974	978,953
Michigan	349,703	583,653	1,211,379	1,384,973	1,575,267	1,571,391	1,482,865	1,048,822	992,598
Minnesota	230,789	353,245	443,739	534,965	604,152	609,495	643,452	724,198	675,623
Mississippi	*	51,496	22,966	93,912	131,218	127,282	174,913	155,966	161,058
Missouri	178,377	224,442	279,342	334,319	430,538	411,039	451,936	368,561	425,768
Montana	*	*	*	17,473	19,204	20,401	43,205	52,014	61,726
Nebraska	*	*	159,617	190,754	205,560	216,723	228,138	237,496	244,058
Nevada	*	144,453	*	132,684	149,735	152,285	185,347	182,033	245,553
New Hampshire	*	67,315	109,610	136,510	170,433	192,674	217,847	209,366	195,539
New Jersey	294,690	300,594	396,865	1,009,996	1,319,513	1,394,412	1,389,235	1,282,857	993,630
New Mexico	*	*	*	*	76,469	76,443	75,643	65,123	76,512
New York	2,157,618	3,138,133	3,259,221	3,478,918	3,684,036	3,627,966	3,574,947	3,552,701	3,043,468
North Carolina	187,253	323,594	328,715	443,600	576,538	628,285	627,184	748,608	695,429
North Dakota	*	*	*	*	22,502	20,478	68,767	66,830	68,351
Northern Mariana Isl.	0	0	0	0	0	0	0	0	0
Ohio	255,267	280,088	510,623	754,020	979,885	963,330	981,363	953,386	951,812
Oklahoma	*	125,912	203,028	217,854	242,737	286,138	328,505	329,248	361,715
Oregon	58,699	118,425	154,492	167,965	267,121	317,675	260,065	375,380	305,519
Pennsylvania	671,437	1,122,623	1,329,357	1,413,458	1,706,036	1,828,160	1,877,661	1,891,822	1,572,224
Puerto Rico	*	*	*	*	*	*	*	*	*
Rhode Island	*	69,237	119,112	167,714	213,787	229,179	267,486	264,827	275,526
South Carolina	*	90,241	121,331	204,252	226,284	240,281	290,102	291,941	329,943
South Dakota	*	*	*	49,243	*	*	128,053	136,073	135,275
Tennessee	200,721	272,211	247,056	349,588	475,312	481,997	538,227	543,386	575,957
Texas	998,326	1,891,131	2,170,914	2,266,028	2,320,273	2,278,556	2,332,263	1,884,267	1,905,521
Utah	79,034	145,603	161,193	235,170	288,009	286,966	280,696	260,478	281,796
Vermont	*	*	*	*	*	*	60,569	51,405	49,094
Virgin Islands	0	0	0	0	0	0	*	*	*
Virginia	228,271	402,528	558,206	738,479	994,588	1,074,184	1,058,163	1,110,090	1,046,894
Washington	184,353	229,693	358,933	386,104	494,375	501,518	505,432	514,149	506,360
West Virginia	*	*	*	*	*	107,134	117,620	118,349	117,009
Wisconsin	244,373	322,735	420,200	526,343	626,809	593,293	644,787	588,388	611,912
Wyoming	*	*	*	*	*	*	30,425	34,004	39,443
<b>Total</b>	<b>11,557,381</b>	<b>17,274,727</b>	<b>21,644,928</b>	<b>26,985,345</b>	<b>32,033,915</b>	<b>32,880,812</b>	<b>33,975,336</b>	<b>31,387,839</b>	<b>29,782,241</b>

\* Data withheld to maintain firm confidentiality.

Only LECs with at least 10,000 lines in a state were required to report through December 2004. Beginning with the June 2005 data all LECs are required to report. Some data for June and December 2005 have been revised.

**Table 10**  
**End-User Switched Access Lines Served by Reporting Incumbent Local Exchange Carriers**

State	2000	2001	2002	2003	2004		2005		2006
	Jun	Jun	Jun	Jun	Jun	Dec	Jun	Dec	Jun
Alabama	2,456,101	2,413,440	2,330,940	2,183,237	1,997,058	1,971,269	2,024,441	2,024,260	1,978,871
Alaska	373,132	365,242	341,753	318,056	309,016	299,899	328,415	326,374	324,892
American Samoa	0	0	0	0	0	0	10,659	10,838	11,008
Arizona	3,051,648	3,062,586	2,947,967	2,700,186	2,415,432	2,367,011	2,325,669	2,295,247	2,226,531
Arkansas	1,422,736	1,412,863	1,304,659	1,220,542	1,172,200	1,153,302	1,216,081	1,215,421	1,192,839
California	23,436,793	23,103,077	22,315,423	20,645,363	19,478,761	19,140,976	18,944,739	19,630,709	19,479,382
Colorado	2,887,311	2,805,532	2,717,320	2,557,814	2,439,132	2,403,583	2,370,884	2,337,733	2,276,358
Connecticut	2,438,119	2,363,687	2,305,082	2,219,140	2,102,689	2,045,255	1,984,587	1,962,233	1,928,048
Delaware	570,331	567,381	537,498	546,684	497,466	485,278	478,837	467,428	467,676
District of Columbia	914,716	887,590	829,592	932,576	915,583	892,860	894,341	871,773	891,832
Florida	11,365,772	11,211,674	10,603,872	10,133,865	9,633,565	9,539,410	9,345,496	9,209,755	9,013,194
Georgia	5,032,360	4,905,002	4,604,834	4,308,760	4,044,935	3,990,388	3,972,427	3,969,582	3,843,615
Guam	0	0	0	0	0	0	0	67,011	67,721
Hawaii	737,255	739,979	729,239	707,634	683,146	673,259	643,998	627,319	608,403
Idaho	724,440	732,814	707,180	687,342	666,914	659,009	682,165	672,447	666,382
Illinois	7,990,635	7,558,613	7,322,494	6,741,172	6,326,988	6,225,760	6,214,096	6,497,122	6,354,337
Indiana	3,597,365	3,576,710	3,542,715	3,327,235	3,095,055	3,056,392	3,070,315	3,111,533	3,079,875
Iowa	1,414,622	1,379,872	1,357,155	1,296,148	1,232,364	1,210,098	1,355,951	1,324,575	1,302,210
Kansas	1,533,755	1,441,940	1,324,804	1,186,953	1,102,696	1,067,801	1,110,300	1,122,549	1,100,313
Kentucky	2,173,716	2,170,191	2,141,611	2,024,894	1,841,495	1,772,039	1,791,507	1,768,140	1,732,044
Louisiana	2,515,485	2,505,961	2,428,935	2,251,091	2,040,518	2,000,230	1,953,820	1,832,399	1,800,472
Maine	818,979	801,649	768,216	775,378	690,024	661,288	688,379	663,772	692,360
Maryland	3,760,409	3,599,027	3,488,961	3,541,493	3,239,029	3,189,630	3,173,227	3,096,645	3,166,012
Massachusetts	4,313,988	4,131,520	3,804,513	3,771,142	3,432,038	3,321,129	3,245,760	3,102,061	3,075,544
Michigan	6,363,024	6,027,730	5,498,139	4,819,294	4,487,619	4,393,671	4,410,849	4,608,796	4,490,783
Minnesota	2,935,154	2,861,684	2,804,937	2,572,413	2,377,827	2,317,299	2,384,842	2,318,991	2,273,378
Mississippi	1,355,932	1,356,136	1,332,853	1,235,339	1,148,580	1,125,570	1,117,163	1,113,684	1,089,448
Missouri	3,508,475	3,446,252	3,262,072	3,067,732	2,906,801	2,852,641	2,892,074	2,907,056	2,841,990
Montana	514,992	527,989	514,353	500,865	482,548	471,621	487,046	472,596	460,058
Nebraska	1,010,682	931,979	867,474	775,829	736,257	665,963	692,446	681,113	661,351
Nevada	1,341,786	1,366,124	1,351,282	1,304,641	1,272,060	1,260,566	1,251,993	1,246,342	1,233,166
New Hampshire	813,919	775,864	741,553	723,408	670,480	653,880	645,599	624,329	624,466
New Jersey	6,705,441	6,707,243	6,226,079	5,766,555	5,148,627	4,972,805	4,846,691	4,714,621	4,784,134
New Mexico	947,809	977,439	969,763	940,232	894,345	879,539	902,178	892,715	865,466
New York	11,532,265	10,689,293	9,806,596	9,588,446	8,685,767	8,474,296	8,292,109	8,019,979	8,285,874
North Carolina	5,136,006	5,040,317	4,942,113	4,682,253	4,440,280	4,349,371	4,239,339	4,141,827	4,059,971
North Dakota	354,945	312,573	303,326	280,507	265,881	257,409	280,323	278,956	271,969
Northern Mariana Isl	0	0	0	0	0	0	0	22,770	21,313
Ohio	6,944,806	6,876,434	6,705,911	6,131,768	5,697,351	5,581,862	5,504,901	5,574,685	5,367,588
Oklahoma	1,983,894	1,923,027	1,822,278	1,679,984	1,591,936	1,524,900	1,534,575	1,520,798	1,472,856
Oregon	2,119,998	2,079,221	2,005,347	1,871,970	1,743,918	1,697,357	1,672,650	1,643,476	1,627,341
Pennsylvania	8,200,347	7,818,599	7,288,959	7,146,626	6,638,982	6,498,790	6,400,366	6,299,554	6,385,263
Puerto Rico	1,288,076	1,300,665	1,288,718	1,212,779	1,111,894	1,072,456	1,047,636	1,020,878	1,035,002
Rhode Island	639,438	604,128	547,728	509,749	448,853	420,277	394,144	369,454	362,993
South Carolina	2,234,165	2,239,383	2,253,384	2,143,712	2,025,422	2,002,526	1,895,283	1,938,813	1,907,925
South Dakota	353,073	338,834	314,755	296,879	271,682	269,271	297,036	279,170	279,589
Tennessee	3,419,317	3,352,224	3,232,548	3,042,739	2,818,771	2,773,968	2,727,436	2,717,515	2,675,649
Texas	12,349,899	11,496,247	11,006,831	10,451,045	10,139,446	9,780,440	9,730,233	10,036,157	9,958,460
Utah	1,207,581	1,149,667	1,090,791	1,019,089	940,678	923,458	917,429	924,423	915,178
Vermont	377,987	399,084	383,917	385,901	366,716	361,751	369,720	363,874	369,731
Virgin Islands	69,063	70,426	71,984	71,132	70,672	70,888	70,462	70,038	69,272
Virginia	4,184,850	4,203,412	4,276,468	4,366,897	4,075,297	3,996,369	3,924,917	3,834,232	3,818,918
Washington	3,837,744	3,751,683	3,622,857	3,452,669	3,276,000	3,204,555	3,136,578	3,062,790	2,993,977
West Virginia	910,992	980,575	940,483	962,417	912,228	896,304	891,492	875,854	852,152
Wisconsin	3,239,809	3,151,854	3,145,341	2,953,647	2,754,836	2,699,412	2,725,490	2,739,056	2,669,652
Wyoming	237,588	259,839	256,403	241,316	235,360	234,818	248,614	251,633	244,836
Total	179,648,725	174,752,275	167,330,006	158,274,538	147,993,218	144,809,899	143,757,708	143,773,101	142,249,668

Only LECs with at least 10,000 lines in a state were required to report through December 2004. Beginning with the June 2005 data all LECs are required to report. Some data have been revised.

**Table 11**  
**CLEC-Reported End-User Switched Access Lines by State**  
**(As of June 30, 2006)**

<b>State</b>	<b>Resold Lines</b>	<b>UNEs</b>	<b>CLEC-Owned</b>	<b>Total</b>
Alabama	78,666	211,340	75,939	365,944
Alaska	14,134	*	*	116,432
American Samoa	0	0	0	0
Arizona	152,270	167,491	650,692	970,453
Arkansas	4,225	84,157	74,143	162,525
California	733,184	959,732	1,207,365	2,900,279
Colorado	93,010	243,132	192,585	528,727
Connecticut	50,533	85,942	125,206	261,681
Delaware	34,961	60,136	6,417	101,513
District of Columbia	54,898	40,403	49,300	144,600
Florida	503,882	782,120	331,539	1,617,538
Georgia	214,561	481,559	213,118	909,236
Guam	0	0	0	0
Hawaii	19,107	5,326	36,263	60,696
Idaho	14,972	38,348	27,377	80,698
Illinois	77,225	613,620	448,396	1,139,239
Indiana	26,194	200,365	111,555	338,113
Iowa	44,810	92,522	92,271	229,603
Kansas	28,447	146,219	171,869	346,533
Kentucky	79,999	126,782	130,484	337,265
Louisiana	51,597	164,472	178,133	394,199
Maine	41,041	45,489	48,079	134,610
Maryland	269,276	252,663	68,620	590,557
Massachusetts	303,731	269,551	405,670	978,953
Michigan	34,573	828,590	129,439	992,598
Minnesota	123,064	280,512	272,047	675,623
Mississippi	31,441	102,221	27,396	161,058
Missouri	38,133	181,063	206,572	425,768
Montana	9,361	13,672	38,693	61,726
Nebraska	42,661	16,941	184,455	244,058
Nevada	28,783	123,190	93,580	245,553
New Hampshire	49,499	74,711	71,329	195,539
New Jersey	563,425	312,129	118,075	993,630
New Mexico	23,950	29,763	22,799	76,512
New York	1,125,564	930,917	986,988	3,043,468
North Carolina	162,533	299,799	233,099	695,429
North Dakota	6,469	45,114	16,768	68,351
Northern Mariana Islands	0	0	0	0
Ohio	69,751	403,564	478,500	951,812
Oklahoma	5,318	118,751	237,647	361,715
Oregon	49,478	201,680	54,361	305,519
Pennsylvania	381,485	692,932	497,807	1,572,224
Puerto Rico	*	*	*	*
Rhode Island	*	46,707	*	275,526
South Carolina	44,760	173,190	111,993	329,943
South Dakota	30,392	25,952	78,930	135,275
Tennessee	123,615	295,307	157,033	575,957
Texas	171,592	962,683	771,248	1,905,521
Utah	51,729	134,478	95,588	281,796
Vermont	15,419	18,884	14,791	49,094
Virgin Islands	*	*	*	*
Virginia	282,334	304,749	459,812	1,046,894
Washington	90,110	251,064	165,187	506,360
West Virginia	30,025	76,914	10,070	117,009
Wisconsin	18,226	403,701	189,987	611,912
Wyoming	2,893	19,277	17,275	39,443
<b>Total</b>	<b>6,549,343</b>	<b>12,545,854</b>	<b>10,687,073</b>	<b>29,782,241</b>

\* Data withheld to maintain firm confidentiality.

**Table 12**  
**Percentage of Lines Provided to Residential Customers**

State	ILECs		CLECs		Total	
	Dec 2005	Jun 2006	Dec 2005	Jun 2006	Dec 2005	Jun 2006
Alabama	72	72	43	40	67	67
Alaska	56	55	*	65	*	58
American Samoa	58	54	NA	NA	58	54
Arizona	66	65	58	62	64	64
Arkansas	68	68	43	40	65	64
California	61	61	44	42	59	59
Colorado	68	68	28	28	60	61
Connecticut	67	65	42	40	64	62
Delaware	65	65	40	31	60	59
District of Columbia	25	24	22	17	25	23
Florida	70	68	26	24	63	62
Georgia	64	64	41	35	60	58
Guam	57	55	NA	NA	57	55
Hawaii	65	64	26	34	62	61
Idaho	70	69	28	27	65	64
Illinois	60	59	44	40	58	56
Indiana	67	66	52	43	65	64
Iowa	71	71	58	57	70	69
Kansas	63	63	65	64	64	63
Kentucky	70	69	63	61	69	68
Louisiana	67	66	53	53	65	64
Maine	75	75	49	42	70	70
Maryland	61	59	47	40	58	56
Massachusetts	64	63	43	39	59	57
Michigan	61	61	60	57	61	60
Minnesota	71	71	40	41	63	64
Mississippi	69	68	58	52	68	66
Missouri	69	68	57	50	68	66
Montana	70	69	41	49	67	67
Nebraska	59	58	61	61	59	59
Nevada	66	66	17	25	60	59
New Hampshire	73	73	39	33	65	63
New Jersey	62	62	44	36	58	58
New Mexico	72	72	34	28	69	69
New York	62	63	51	44	59	58
North Carolina	70	69	39	32	65	64
North Dakota	70	70	56	58	67	68
Northern Mariana Islands	49	50	NA	NA	49	50
Ohio	67	67	45	54	64	65
Oklahoma	69	68	61	61	68	66
Oregon	73	73	20	14	63	63
Pennsylvania	71	70	32	25	62	61
Puerto Rico	83	78	*	*	*	*
Rhode Island	67	65	59	60	64	63
South Carolina	70	70	37	41	66	66
South Dakota	65	65	64	65	64	65
Tennessee	73	72	27	28	65	64
Texas	65	64	51	50	63	62
Utah	68	68	33	27	60	59
Vermont	73	74	29	12	68	67
Virgin Islands	66	66	*	*	*	*
Virginia	60	60	51	47	58	57
Washington	72	70	28	21	65	63
West Virginia	76	76	23	21	69	70
Wisconsin	64	64	53	56	62	62
Wyoming	62	60	59	67	62	61
Nationwide	66	65	44	42	62	61

\* Data withheld to maintain firm confidentiality. NA is an abbreviation for not applicable. Some data have been revised for December 2005.



**Table 13**  
**Number of Reporting Local Exchange Carriers**  
**(As of June 30, 2006)**

<b>State</b>	<b>ILECs</b>	<b>CLECs</b>	<b>Total</b>
Alabama	22	46	68
Alaska	15	4	19
American Samoa	1	0	1
Arizona	15	29	44
Arkansas	20	28	48
California	16	54	70
Colorado	22	34	56
Connecticut	2	27	29
Delaware	1	22	23
District of Columbia	1	29	30
Florida	10	72	82
Georgia	25	59	84
Guam	1	0	1
Hawaii	2	6	8
Idaho	20	19	39
Illinois	44	65	109
Indiana	31	49	80
Iowa	135	53	188
Kansas	38	44	82
Kentucky	18	56	74
Louisiana	11	41	52
Maine	9	19	28
Maryland	2	46	48
Massachusetts	4	38	42
Michigan	23	50	73
Minnesota	60	46	106
Mississippi	14	42	56
Missouri	35	43	78
Montana	15	23	38
Nebraska	34	21	55
Nevada	13	27	40
New Hampshire	6	25	31
New Jersey	3	52	55
New Mexico	14	23	37
New York	23	56	79
North Carolina	21	51	72
North Dakota	20	21	41
Northern Mariana Islands	1	0	1
Ohio	33	51	84
Oklahoma	36	36	72
Oregon	29	33	62
Pennsylvania	24	55	79
Puerto Rico	1	4	5
Rhode Island	1	21	22
South Carolina	17	48	65
South Dakota	25	19	44
Tennessee	18	47	65
Texas	53	68	121
Utah	12	19	31
Vermont	8	12	20
Virgin Islands	1	1	2
Virginia	13	42	55
Washington	16	33	49
West Virginia	7	25	32
Wisconsin	44	46	90
Wyoming	11	16	27
Nationwide - Unduplicated	804	399	1,203

Each report represents all of a company's operations in a given state. Carriers with both ILEC and CLEC operations in the same state provide separate reports.

**Table 14**  
**Mobile Wireless Telephone Subscribers<sup>1</sup>**

State	Jun 2006		Subscribers								
	Carriers <sup>1</sup>	Percent Resold <sup>2</sup>	2000	2001	2002	2003	2004		2005		2006
			Jun	Jun	Jun	Jun	Jun	Dec	Jun	Dec	Jun
Alabama	12	5 %	1,253,084	1,930,631	2,027,845	2,100,557	2,301,847	2,580,810	2,843,385	3,071,359	3,240,669
Alaska	10	1	169,892	218,424	242,133	*	307,323	321,152	340,507	376,695	397,429
American Samoa	*	*	0	0	0	0	*	*	*	*	*
Arizona	10	9	1,624,668	2,018,410	2,412,998	2,643,952	3,079,657	3,299,222	3,547,280	3,849,152	4,158,483
Arkansas	6	7	715,467	891,275	1,130,302	1,351,291	1,376,564	1,458,673	1,681,404	1,781,266	1,925,696
California	11	4	12,283,369	14,184,625	16,007,376	18,892,619	21,575,797	23,457,761	24,598,429	25,564,483	27,524,044
Colorado	9	10	1,654,989	1,983,405	2,247,166	2,426,929	2,727,910	2,808,195	3,053,186	3,260,286	3,442,153
Connecticut	5	6	1,136,618	1,418,367	1,577,873	1,791,944	2,064,204	2,181,133	2,332,045	2,466,372	2,585,425
Delaware	4	6	275,219	389,284	433,059	503,353	593,452	646,064	710,853	751,042	790,189
Dist. of Columbia	4	5	333,815	382,457	415,399	520,182	555,958	657,774	746,529	819,061	872,184
Florida	8	5	4,983,478	7,536,670	8,607,715	10,252,348	11,916,615	13,169,278	12,577,898	12,521,686	14,125,590
Georgia	10	6	2,687,238	4,076,119	4,300,831	4,709,288	5,332,517	5,730,223	6,023,302	6,103,234	6,891,999
Guam	*	0	*	*	*	*	*	*	*	61,670	66,767
Hawaii	4	3	454,364	543,283	640,247	732,262	819,262	880,965	935,189	983,998	1,011,076
Idaho	15	6	296,066	398,781	500,693	572,406	653,779	705,948	777,445	838,095	905,581
Illinois	9	6	4,309,660	5,621,044	5,409,370	6,834,217	7,529,966	8,075,938	8,575,211	9,026,588	9,540,120
Indiana	8	11	1,717,378	1,781,247	2,032,290	2,456,509	2,844,568	3,158,002	3,276,910	3,536,228	3,781,322
Iowa	46	10	975,629	861,382	1,157,580	1,250,305	1,445,711	1,557,542	1,593,673	1,767,830	1,820,681
Kansas	13	10	724,024	901,225	1,061,171	1,195,230	1,345,160	1,454,087	1,538,945	1,666,340	1,771,588
Kentucky	10	10	999,544	1,176,756	1,505,982	1,595,290	2,000,459	2,189,345	2,495,494	2,649,143	2,807,061
Louisiana	8	6	1,294,693	1,677,292	2,187,811	2,365,224	2,547,153	2,834,716	2,997,513	3,258,336	3,425,482
Maine	6	12	283,640	399,616	457,835	524,246	610,533	662,623	785,814	823,242	870,197
Maryland	6	6	2,013,058	2,446,818	2,684,441	3,108,086	3,575,747	3,900,172	4,177,782	4,470,611	4,719,558
Massachusetts	5	6	2,228,169	2,753,685	3,289,934	3,506,039	3,919,139	4,042,592	4,316,120	4,544,572	4,724,175
Michigan	11	7	3,423,535	4,071,091	4,758,538	4,889,269	5,430,637	5,766,616	6,238,846	6,613,341	6,872,249
Minnesota	9	10	1,595,560	2,014,317	2,254,895	2,564,783	2,823,079	2,973,126	3,124,214	3,370,196	3,532,420
Mississippi	9	7	509,038	993,781	1,106,700	1,232,750	1,411,277	1,517,702	1,627,762	1,817,099	1,919,199
Missouri	11	8	1,848,775	1,937,684	2,246,430	2,515,325	2,859,953	3,109,167	3,482,839	3,732,549	3,942,213
Montana	7	4	*	*	291,429	343,160	*	*	467,795	526,954	577,149
Nebraska	8	4	600,885	712,685	838,568	900,744	984,355	1,045,810	1,078,955	1,169,068	1,208,393
Nevada	8	7	825,163	766,581	895,586	1,077,380	1,319,684	1,463,370	1,605,708	1,778,411	1,884,304
New Hampshire	6	8	309,263	445,181	529,795	598,504	686,746	727,985	916,833	989,443	1,049,150
New Jersey	4	4	2,750,024	3,896,778	4,531,457	5,392,240	6,326,459	7,388,722	7,269,330	7,723,622	8,120,504
New Mexico	10	8	395,111	619,582	735,107	828,869	939,091	987,813	1,025,143	1,170,436	1,252,943
New York	10	7	5,016,524	6,749,096	7,915,526	8,829,070	9,939,759	10,834,741	11,901,311	12,634,420	13,338,040
North Carolina	14	6	2,730,178	3,377,331	4,610,120	4,305,521	4,875,916	5,363,630	5,496,422	5,784,334	6,200,866
North Dakota	6	3	*	*	*	*	*	*	388,609	454,456	481,655
Northern Mariana Isl.	*	*	*	*	*	*	*	*	*	*	*
Ohio	12	8	3,278,960	4,255,934	4,887,376	5,659,459	6,188,081	6,627,910	7,056,675	7,571,540	8,010,972
Oklahoma	15	8	979,513	1,200,234	1,366,475	1,574,588	1,724,505	1,760,122	2,000,787	2,187,424	2,315,999
Oregon	10	8	1,082,425	1,268,909	1,473,883	1,682,036	1,894,285	2,029,224	2,128,710	2,417,992	2,567,147
Pennsylvania	10	8	3,850,372	4,378,216	4,987,067	5,681,653	6,420,037	7,037,296	7,340,862	7,881,534	8,283,918
Puerto Rico	6	1	1,090,005	1,374,747	1,136,619	1,401,599	1,698,702	2,076,698	2,002,851	2,110,798	2,170,540
Rhode Island	4	8	313,550	401,805	463,636	527,366	615,398	607,489	653,900	709,525	726,483
South Carolina	12	6	1,236,338	1,502,345	1,830,516	2,041,541	2,337,367	2,369,252	2,593,000	2,768,481	2,984,417
South Dakota	6	3	*	*	292,210	344,825	382,906	428,513	435,063	482,623	515,139
Tennessee	12	7	1,876,444	2,251,208	2,660,068	2,800,735	3,171,487	3,531,286	3,791,154	4,114,401	4,401,813
Texas	30	7	6,705,423	8,294,338	9,650,715	10,776,234	12,091,134	13,092,007	14,402,814	15,620,248	16,902,077
Utah	9	6	692,006	833,492	970,854	1,094,563	1,229,029	1,345,205	1,415,896	1,531,763	1,651,606
Vermont	4	15	*	*	*	*	*	*	295,971	315,382	334,655
Virgin Islands	*	*	0	*	*	*	*	*	*	*	*
Virginia	8	6	2,447,687	3,059,420	3,429,450	3,879,582	4,392,319	4,240,462	4,900,018	5,126,216	5,382,292
Washington	10	9	2,144,767	2,493,214	2,849,043	3,102,750	3,567,896	3,770,602	3,995,325	4,177,196	4,418,314
West Virginia	10	14	347,916	452,036	549,722	579,983	713,657	761,658	821,103	858,599	964,977
Wisconsin	12	7	1,342,908	2,008,679	2,523,956	2,533,215	2,831,645	2,997,029	3,191,190	3,355,951	3,505,936
Wyoming	7	6	*	173,939	168,232	276,344	277,658	302,203	330,567	358,593	376,753
Nationwide	160	7 %	90,643,058	114,028,928	130,751,459	147,623,734	167,313,001	181,105,135	192,053,067	203,667,472	217,418,404

\* Data withheld to maintain firm confidentiality. Some data for December 2005 have been revised.

<sup>1</sup> For data through December 2004, only facilities-based wireless carriers with at least 10,000 mobile telephony subscribers per state were required to report data, and they were instructed to use billing addresses to determine subscriber counts by state. Starting with the June 2005 data, all facilities-based wireless carriers are required to report, and to use the area codes of telephone numbers provided to subscribers to determine subscriber counts by state.

<sup>2</sup> Percentage of mobile wireless subscribers receiving their service from a mobile wireless reseller.

**Table 15**  
**Percentage of Zip Codes with Competitive Local Exchange Carriers (CLECs)**

Number of CLECs	2000	2001	2002	2003	2004	2005		2006
	Jun	Jun	Jun	Jun	Jun	Jun	Dec	Jun
Zero	46.6 %	40.0 %	33.0 %	26.8 %	21.0 %	17.4 %	18.4 %	17.7 %
One	19.7	16.3	19.5	18.6	15.3	10.5	11.4	11.3
Two	9.1	9.9	10.3	10.0	9.8	7.6	7.6	7.8
Three	6.9	8.2	7.9	6.7	7.5	6.0	6.2	6.2
Four	5.0	5.6	6.6	5.6	6.1	4.8	4.7	5.0
Five	3.9	4.1	4.9	5.0	5.4	4.2	4.1	4.2
Six	2.4	3.3	4.0	4.4	5.6	3.4	3.6	3.5
Seven	1.6	2.6	3.1	4.1	5.4	3.1	3.3	3.2
Eight	1.2	2.2	2.5	3.6	5.4	3.1	2.9	2.9
Nine	1.1	1.7	1.9	3.1	4.0	2.8	2.7	2.8
Ten or More	2.5	5.9	6.3	12.2	14.7	36.9	35.0	35.3

**Table 16**  
**Percentage of Households in Zip Codes with Competitive Local Exchange Carriers**

Number of CLECs	2000	2001	2002	2003	2004	2005		2006
	Jun	Jun	Jun	Jun	Jun	Jun	Dec	Jun
Zero	14.5 %	9.5 %	6.6 %	4.5 %	3.0 %	2.2 %	2.4 %	2.3 %
One	13.5	9.0	9.1	6.5	4.8	2.1	2.3	2.4
Two	11.9	8.8	9.0	6.1	4.8	2.3	2.2	2.1
Three	12.5	11.5	9.5	5.4	4.9	2.2	2.3	2.2
Four	11.1	10.1	10.3	6.0	5.6	2.2	2.1	2.3
Five	9.6	8.7	9.0	6.8	5.7	2.2	2.2	2.0
Six	6.4	7.6	8.4	7.1	7.0	1.9	2.2	1.9
Seven	4.3	6.0	7.6	7.9	8.1	2.0	2.4	2.2
Eight	3.7	5.6	6.0	8.0	9.8	2.6	2.5	2.3
Nine	3.7	4.5	4.6	7.2	8.4	2.4	2.7	2.7
Ten or More	8.9	18.8	19.7	34.6	37.9	77.9	76.8	77.4

Demographic data are from Demographic Power Pack, Current Year Update (2000), MapInfo Corporation. Only LECs with at least 10,000 lines in a state were required to report through December 2004. Beginning with the June 2005 data all LECs are required to report. Figures may not add to 100% due to rounding.

**Table 17**  
**Percentage of Zip Codes with Competitive Local Exchange Carriers as of June 30, 2006**

State	Number of CLECs								
	Zero	One - Three	Four	Five	Six	Seven	Eight	Nine	Ten or More
Alabama	9 %	25 %	6 %	7 %	6 %	4 %	3 %	4 %	37 %
Alaska	87	13	0	0	0	0	0	0	0
Arizona	10	21	6	5	3	2	3	4	44
Arkansas	29	49	4	3	2	1	2	1	10
California	8	15	3	3	3	3	2	2	60
Colorado	24	23	3	3	5	3	3	2	34
Connecticut	4	20	9	7	8	5	10	9	27
Delaware	2	2	7	3	2	2	7	0	76
District of Columbia	0	12	0	0	0	0	0	0	88
Florida	1	7	1	3	2	2	3	2	79
Georgia	9	22	5	4	3	3	3	3	48
Hawaii	12	67	19	2	0	0	0	0	0
Idaho	35	41	5	4	2	2	3	4	5
Illinois	22	32	4	2	3	2	2	2	30
Indiana	11	28	10	4	4	5	3	3	31
Iowa	39	45	2	2	2	3	2	2	4
Kansas	32	30	5	5	2	4	3	2	17
Kentucky	12	35	6	7	5	5	2	4	23
Louisiana	6	23	6	4	4	3	4	3	46
Maine	9	45	9	10	6	5	4	2	10
Maryland	0	8	5	4	3	5	3	6	65
Massachusetts	1	5	2	3	1	3	3	4	78
Michigan	6	15	6	6	6	4	5	3	49
Minnesota	29	35	4	4	2	3	2	2	19
Mississippi	3	17	6	6	7	7	6	4	45
Missouri	33	30	5	3	3	2	2	2	20
Montana	65	25	2	3	1	1	2	1	1
Nebraska	61	24	5	2	2	2	2	2	1
Nevada	22	27	4	7	4	4	4	4	25
New Hampshire	1	24	10	11	7	8	6	5	29
New Jersey	0	1	2	1	1	1	2	1	89
New Mexico	39	33	5	3	3	4	4	1	9
New York	5	14	5	5	4	4	4	3	57
North Carolina	5	21	6	7	6	5	5	5	40
North Dakota	72	21	2	0	1	1	1	1	1
Ohio	3	26	9	7	6	5	5	5	35
Oklahoma	35	22	4	4	3	2	2	3	27
Oregon	22	33	4	3	3	4	2	3	26
Pennsylvania	8	27	5	4	4	4	2	3	42
Puerto Rico	29	71	0	0	0	0	0	0	0
Rhode Island	0	12	9	4	1	9	7	4	53
South Carolina	10	20	4	5	6	4	3	4	45
South Dakota	60	33	3	2	1	1	0	0	1
Tennessee	14	17	4	4	5	3	4	3	45
Texas	14	21	5	3	3	3	3	3	46
Utah	25	25	6	3	5	2	3	4	26
Vermont	14	43	10	12	6	5	4	3	4
Virginia	13	30	7	7	4	4	3	3	29
Washington	18	31	4	2	3	3	3	3	32
West Virginia	18	41	12	6	5	3	3	3	8
Wisconsin	20	41	5	4	2	2	2	2	23
Wyoming	40	42	3	5	3	6	2	0	0
Nationwide	18 %	25 %	5 %	4 %	4 %	3 %	3 %	3 %	35 %

**Table 18**  
**CLEC-Owned End-User Switched Access Lines Served by Reporting Competitive Local Exchange Carriers**  
(In Thousands)

State	2000	2001		2002		2003		2004		2005		2006
	Dec	Jun	Dec	Jun	Dec	Jun	Dec	Jun	Dec	Jun	Dec	Jun
Alabama	39	40	18	6	50	68	76	76	89	70	72	76
Alaska	*	*	*	*	*	*	*	*	*	*	*	*
American Samoa	0	0	0	0	0	0	0	0	0	0	0	0
Arizona	50	132	164	194	211	279	351	409	440	511	645	651
Arkansas	*	*	*	*	49	*	46	46	46	68	68	74
California	674	762	910	890	891	888	1,025	1,042	1,050	1,204	1,280	1,207
Colorado	117	151	172	183	207	200	163	155	155	161	273	193
Connecticut	73	78	91	97	105	104	104	111	122	136	113	125
Delaware	*	0	0	*	*	*	*	*	*	2	3	6
District of Columbia	52	70	80	74	67	69	71	72	81	110	61	49
Florida	319	372	260	302	344	309	331	364	418	320	434	332
Georgia	191	184	167	161	197	192	180	182	254	201	152	213
Guam	0	0	0	0	0	0	0	0	0	0	0	0
Hawaii	0	*	*	*	*	*	*	*	*	15	25	36
Idaho	*	*	*	*	*	*	*	*	*	12	24	27
Illinois	325	416	467	477	446	403	392	400	488	474	415	448
Indiana	70	59	76	76	72	69	79	91	92	94	90	112
Iowa	25	21	33	34	37	40	38	40	42	59	71	92
Kansas	11	18	25	26	46	56	64	76	102	135	133	172
Kentucky	42	*	*	*	50	28	79	83	91	95	34	130
Louisiana	15	24	21	24	38	53	77	93	100	160	153	178
Maine	*	*	*	*	*	2	2	20	27	47	52	48
Maryland	65	83	30	30	24	28	94	116	155	78	60	69
Massachusetts	229	277	317	310	366	363	375	390	420	428	394	406
Michigan	218	113	113	121	104	85	108	106	160	235	102	129
Minnesota	59	61	80	114	153	163	167	169	182	203	243	272
Mississippi	19	11	6	*	*	3	4	5	8	19	19	27
Missouri	75	51	37	50	70	54	50	55	89	129	142	207
Montana	*	*	*	*	*	13	14	15	16	20	30	39
Nebraska	*	*	91	103	115	125	130	135	142	168	181	184
Nevada	*	37	*	*	35	28	33	30	32	35	38	94
New Hampshire	25	29	43	45	59	60	63	65	76	84	80	71
New Jersey	120	95	71	88	88	89	92	105	156	144	177	118
New Mexico	*	*	*	*	*	*	*	15	15	15	11	23
New York	546	579	682	608	432	402	374	418	449	591	879	987
North Carolina	88	111	70	75	77	96	74	101	156	188	238	233
North Dakota	*	*	*	*	*	*	6	8	8	12	16	17
Northern Mariana Isl.	0	0	0	0	0	0	0	0	0	0	0	0
Ohio	132	135	144	153	83	69	85	108	137	233	438	479
Oklahoma	71	77	89	115	114	111	174	138	178	188	205	238
Oregon	48	60	31	36	45	39	38	35	41	42	63	54
Pennsylvania	386	458	512	553	538	494	554	573	654	*	643	498
Puerto Rico	*	*	*	*	*	*	*	*	*	*	*	*
Rhode Island	*	45	62	76	90	100	116	131	151	171	*	*
South Carolina	49	26	7	7	20	25	25	28	38	56	73	112
South Dakota	*	*	*	*	*	26	35	*	*	25	79	79
Tennessee	109	117	92	56	103	95	90	94	124	92	146	157
Texas	367	418	414	406	426	430	436	462	590	659	677	771
Utah	73	77	72	80	91	80	73	68	76	62	86	96
Vermont	*	*	*	*	*	*	*	*	*	*	11	15
Virgin Islands	0	0	0	0	0	0	0	0	0	*	*	*
Virginia	132	179	203	221	275	285	438	492	494	373	430	460
Washington	97	115	156	161	178	155	144	149	147	157	178	165
West Virginia	*	*	*	*	*	*	*	*	6	9	10	10
Wisconsin	50	54	51	56	46	45	47	58	37	284	139	190
Wyoming	*	*	*	*	*	*	*	*	*	2	9	17
Total	5,217	5,776	6,072	6,236	6,479	6,370	7,045	7,483	8,503	9,124	10,163	10,687

\* Data withheld to maintain firm confidentiality. Some data for December 2005 have been revised.

Only LECs with at least 10,000 lines in a state were required to report through December 2004. Beginning with the June 2005 data all LECs are required to report.

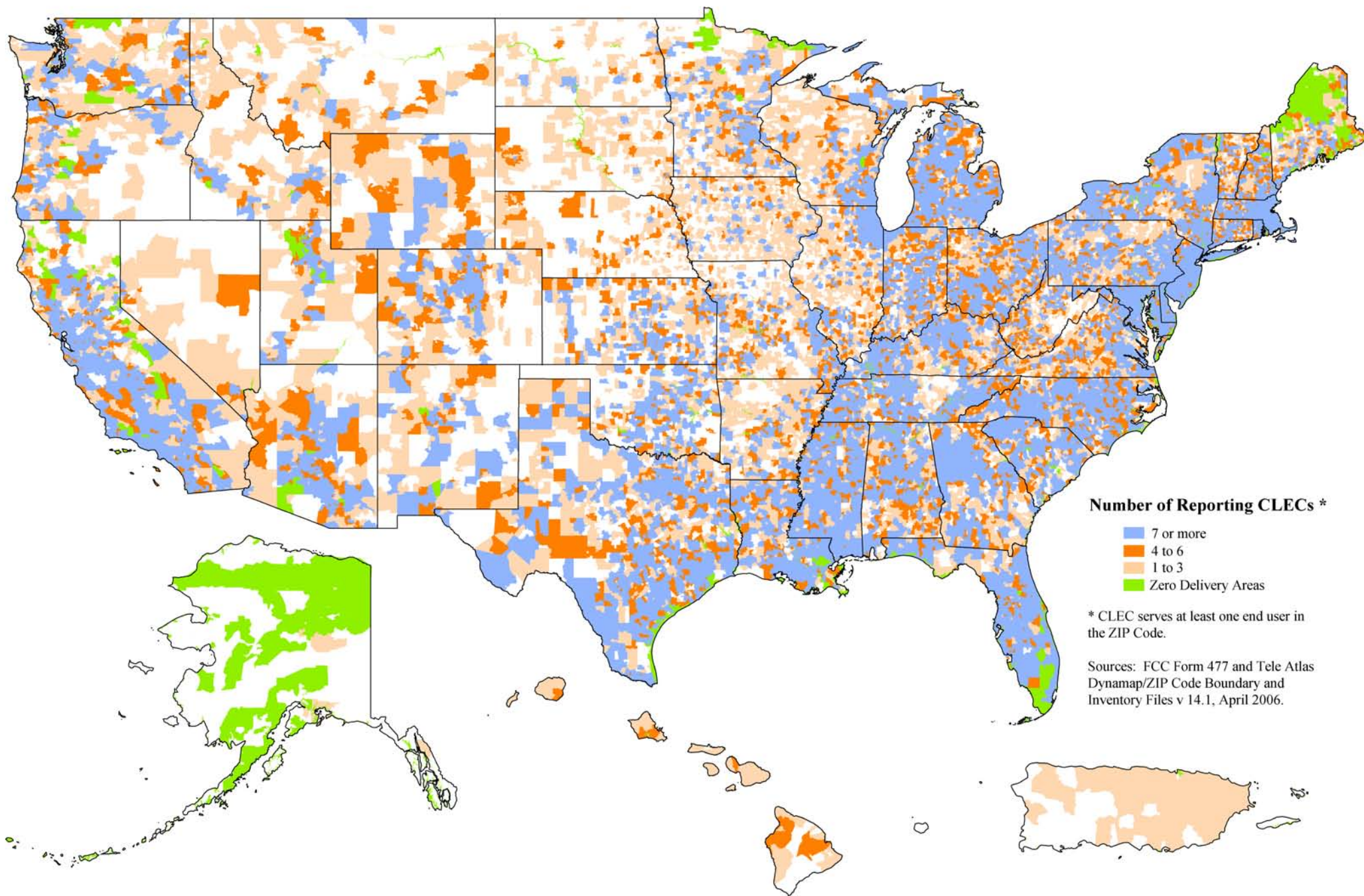
**Table 19**  
**UNEs Acquired from Other Carriers**  
(In Thousands)

State	1999	2000		2001		2002		2003		2004		2005		2006
	Dec	Jun	Dec	Jun	Dec	Jun	Dec	Jun	Dec	Jun	Dec	Jun	Dec	Jun
Alabama	59	31	46	52	*	89	140	173	137	207	201	217	192	211
Alaska	*	*	*	*	*	*	*	*	*	*	*	*	*	*
American Samoa	0	0	0	0	0	0	0	0	0	0	0	0	0	0
Arizona	6	16	19	54	68	80	78	123	234	268	228	171	161	167
Arkansas	*	*	*	*	*	*	94	*	*	110	98	100	77	84
California	164	240	309	575	603	746	1,281	1,555	1,852	2,148	2,245	1,999	1,189	960
Colorado	14	22	99	140	148	161	154	187	222	234	199	243	223	243
Connecticut	*	*	*	*	7	18	42	47	68	93	101	110	92	86
Delaware	*	*	*	0	0	*	*	47	34	52	52	101	74	60
District of Columbia	*	*	13	34	10	42	47	60	63	82	62	74	62	40
Florida	186	113	186	252	377	482	849	852	871	1,020	1,037	933	936	782
Georgia	90	92	182	202	326	418	455	536	555	642	566	559	491	482
Guam	0	0	0	0	0	0	0	0	0	0	0	0	0	0
Hawaii	*	*	0	*	*	*	*	*	*	*	*	4	5	5
Idaho	0	0	*	*	*	*	*	*	*	26	25	51	38	38
Illinois	76	163	219	435	568	734	933	1,024	1,119	1,121	1,016	955	643	614
Indiana	16	31	56	66	79	122	158	228	326	357	328	332	228	200
Iowa	*	*	136	*	140	138	144	137	135	144	138	114	105	93
Kansas	*	21	33	43	103	132	190	206	201	215	208	202	150	146
Kentucky	*	*	*	*	*	*	26	51	66	112	103	136	119	127
Louisiana	46	14	22	52	42	46	94	120	110	156	170	220	144	164
Maine	*	*	*	*	*	*	*	*	46	63	68	84	67	45
Maryland	7	11	29	50	58	119	174	264	362	390	431	514	336	253
Massachusetts	8	14	49	88	117	102	161	260	391	416	429	460	340	270
Michigan	63	107	65	240	628	986	1,154	1,208	1,360	1,388	1,310	1,163	915	829
Minnesota	63	71	159	219	223	242	308	260	293	310	295	306	348	281
Mississippi	*	*	14	15	16	18	61	82	72	98	80	118	99	102
Missouri	30	30	37	61	110	157	204	217	240	322	260	282	208	181
Montana	*	*	*	*	*	*	*	4	*	*	5	16	15	14
Nebraska	*	*	*	*	29	30	33	37	41	43	41	21	19	17
Nevada	*	*	*	107	*	*	92	76	87	66	65	122	114	123
New Hampshire	*	*	2	12	14	23	46	57	63	81	83	97	80	75
New Jersey	24	25	51	82	93	110	415	682	925	987	997	1,015	499	312
New Mexico	*	*	*	*	*	*	*	*	*	47	47	30	23	30
New York	331	1,114	1,607	1,929	2,084	2,044	2,147	2,366	2,652	2,554	2,495	2,455	1,482	931
North Carolina	47	29	70	97	118	140	191	228	246	334	315	251	304	300
North Dakota	*	*	*	*	*	*	*	*	17	*	12	43	45	45
Northern Mariana Isl.	0	0	0	0	0	0	0	0	0	0	0	0	0	0
Ohio	72	67	101	103	121	278	469	584	736	759	662	652	449	404
Oklahoma	*	*	10	27	30	45	72	82	69	81	84	113	115	119
Oregon	1	3	11	31	75	75	99	93	166	191	219	164	264	202
Pennsylvania	92	130	292	494	516	589	612	666	776	899	907	1,100	878	693
Puerto Rico	0	*	*	*	*	*	*	*	*	*	*	*	*	*
Rhode Island	*	*	*	13	26	19	44	54	59	71	66	72	53	47
South Carolina	*	*	25	49	*	66	98	127	114	133	151	179	169	173
South Dakota	*	*	*	*	*	*	*	20	29	*	*	71	52	26
Tennessee	49	60	73	115	128	130	153	180	216	316	261	287	255	295
Texas	215	437	1,101	1,186	1,440	1,542	1,468	1,548	1,546	1,596	1,387	1,376	1,030	963
Utah	*	22	34	46	48	39	49	79	97	141	131	157	122	134
Vermont	*	*	*	*	*	*	*	*	*	*	*	30	25	19
Virgin Islands	0	0	0	0	0	0	0	0	0	0	0	*	*	*
Virginia	37	46	81	146	272	244	288	377	354	415	421	559	396	305
Washington	21	25	46	59	94	114	118	118	183	256	240	259	249	251
West Virginia	*	*	*	*	*	*	*	*	*	*	89	94	76	77
Wisconsin	55	82	108	160	209	273	352	420	499	515	506	306	430	404
Wyoming	*	*	*	*	*	*	*	*	*	*	*	26	22	19
<b>Total</b>	<b>1,959</b>	<b>3,201</b>	<b>5,540</b>	<b>7,580</b>	<b>9,332</b>	<b>10,930</b>	<b>13,709</b>	<b>15,728</b>	<b>17,888</b>	<b>19,624</b>	<b>18,961</b>	<b>19,025</b>	<b>14,521</b>	<b>12,546</b>

\* Data withheld to maintain firm confidentiality. Some data have been revised for June and December 2005.

Only LECs with at least 10,000 lines in a state were required to report through December 2004. Beginning with the June 2005 data all LECs are required to report.

# Reporting CLECs by 5-Digit Geographical ZIP Code (As of June 30, 2006)



# Customer Response

Publication: *Local Telephone Competition: Status as of June 30, 2006*

You can help us provide the best possible information to the public by completing this form and returning it to the Industry Analysis and Technology Division of the FCC's Wireline Competition Bureau.

1. Please check the category that best describes you:

- press
- current telecommunications carrier
- potential telecommunications carrier
- business customer evaluating vendors/service options
- consultant, law firm, lobbyist
- other business customer
- academic/student
- residential customer
- FCC employee
- other federal government employee
- state or local government employee
- Other (please specify)

2. Please rate the report:    Excellent    Good    Satisfactory    Poor    No opinion

- |                      |                          |                          |                          |                          |                          |
|----------------------|--------------------------|--------------------------|--------------------------|--------------------------|--------------------------|
| Data accuracy        | <input type="checkbox"/> | <input type="checkbox"/> | <input type="checkbox"/> | <input type="checkbox"/> | <input type="checkbox"/> |
| Data presentation    | <input type="checkbox"/> | <input type="checkbox"/> | <input type="checkbox"/> | <input type="checkbox"/> | <input type="checkbox"/> |
| Timeliness of data   | <input type="checkbox"/> | <input type="checkbox"/> | <input type="checkbox"/> | <input type="checkbox"/> | <input type="checkbox"/> |
| Completeness of data | <input type="checkbox"/> | <input type="checkbox"/> | <input type="checkbox"/> | <input type="checkbox"/> | <input type="checkbox"/> |
| Text clarity         | <input type="checkbox"/> | <input type="checkbox"/> | <input type="checkbox"/> | <input type="checkbox"/> | <input type="checkbox"/> |
| Completeness of text | <input type="checkbox"/> | <input type="checkbox"/> | <input type="checkbox"/> | <input type="checkbox"/> | <input type="checkbox"/> |

3. Overall, how do you rate this report?    Excellent    Good    Satisfactory    Poor    No opinion

- |                          |                          |                          |                          |                          |
|--------------------------|--------------------------|--------------------------|--------------------------|--------------------------|
| <input type="checkbox"/> | <input type="checkbox"/> | <input type="checkbox"/> | <input type="checkbox"/> | <input type="checkbox"/> |
|--------------------------|--------------------------|--------------------------|--------------------------|--------------------------|

4. How can this report be improved?

5. May we contact you to discuss possible improvements?

Name:

Telephone #:

To discuss the information in this report, contact: 202-418-0940 or for users of TTY equipment, call 202-418-0484		
Fax this response to	or	Mail this response to
202-418-0520		FCC/WCB/IATD Mail Stop 1600 F Washington, DC 20554