

# **Local Telephone Competition: Status as of December 31, 2006**

Industry Analysis and Technology Division  
Wireline Competition Bureau  
December 2007



This report is available for reference in the FCC's Reference Information Center, Courtyard Level, 445 12th Street, SW, Washington, DC. Copies may be purchased by contacting Best Copy and Printing, Inc., 445 12th Street, SW, Room CY-B402, Washington, DC 20554, telephone (800) 378-3160, or via their website at [www.bcpiweb.com](http://www.bcpiweb.com). The report can also be downloaded from the Wireline Competition Bureau Statistical Reports Internet site at [www.fcc.gov/wcb/stats](http://www.fcc.gov/wcb/stats).

## Local Telephone Competition: Status as of December 31, 2006

We present here summary statistics of the latest data on local telephone service competition in the United States as reported in the Commission's local competition and broadband data gathering program (FCC Form 477).<sup>1</sup> The summary statistics provide a snapshot of local telephone service competition based on switched access lines in service and state-specific mobile telephony service subscribers as of December 31, 2006.<sup>2</sup>

Twice a year, all incumbent local exchanges carriers (incumbent LECs) and competitive local exchange carriers (CLECs) are required to report to the Commission basic information about their local telephone service, and all facilities-based mobile telephony providers are required to provide information about their subscribers. Prior to June 2005, the FCC collected data from carriers with at least 10,000 switched access lines, or mobile telephony subscribers, in service in a particular state. Small carriers, many of whom serve rural areas with relatively small populations, were therefore underrepresented in the earlier data.<sup>3</sup> With the inclusion of these carriers, the number of incumbent LEC and CLEC holding companies and unaffiliated carriers reporting local telephone service information as of December 31, 2005 tripled, and the number of reporting facilities-based mobile telephony providers doubled.<sup>4</sup>

Based on the latest information now available, we summarize the following observations:

- End-user customers obtained local telephone service by utilizing approximately 138.8 million incumbent LEC switched access lines, 28.7 million CLEC switched access lines, and 229.6 million mobile telephony service subscriptions at the end of December 2006.<sup>5</sup> See Tables 1 and 14.

---

<sup>1</sup> *Local Competition and Broadband Reporting*, CC Docket No. 99-301, Report and Order, 15 FCC Rcd 7717 (2000); *Local Telephone Competition and Broadband Reporting*, WC Docket No. 04-141, Report and Order, 19 FCC Rcd 22340 (2004). During this data gathering program, qualifying providers file FCC Form 477 each year on March 1 (reporting data for the preceding December 31) and September 1 (reporting data for June 30 of the same year). An updated FCC Form 477, and instructions for that particular form, for each specific round of the data collection may be downloaded from the FCC Forms website at [www.fcc.gov/formpage.html](http://www.fcc.gov/formpage.html).

<sup>2</sup> Statistical summaries of the earlier Form 477 data collections appeared in previous releases of the *Local Telephone Competition* report, available at [www.fcc.gov/wcb/iatd/comp.html](http://www.fcc.gov/wcb/iatd/comp.html).

<sup>3</sup> As of December 31, 2005, filers with fewer than 10,000 switched access lines in a state (including entities that previously filed on a voluntary basis) reported about 4.5 million lines (about 2.0 million incumbent LEC lines and about 2.5 million CLEC lines). By contrast, the data filed for December 2004 included about 0.6 million lines filed on a voluntary basis (about 0.2 million incumbent LEC lines and about 0.4 million CLEC lines). Mobile telephony service providers with fewer than 10,000 subscribers in a state reported about 364,000 subscribers as of December 31, 2005. Such filers reported (on a voluntary basis) about 69,000 subscribers a year earlier.

<sup>4</sup> The nationwide number of CLEC holding companies and unaffiliated entities reporting local telephone service information increased from 149 to 382, and the number of incumbent LEC entities increased from 190 to 807. See Tables 3 and 4. The number of entities reporting mobile telephony subscribers increased from 76 to 155.

<sup>5</sup> For this report, end-user switched access lines reported for the incumbent LEC operations of certain entities (i.e., AT&T Inc. and Verizon Communications Inc.) have been increased to reflect merger with a CLEC – to the extent (continued...)

- CLECs reported 28.7 million (or 17.1%) of the approximately 167.5 million nationwide end-user switched access lines in service at the end of December 2006, compared to 29.8 million (or 17.3%) of the 172.1 million lines reported six months earlier. See Table 1.
- About 43% of switched access lines in service to CLEC end users served residential customers at the end of December 2006, whereas about 64% of switched access lines in service to incumbent LEC end users served residential customers. See Table 2.
- CLECs reported providing 39% of their end-user switched access lines over their own local loop facilities,<sup>6</sup> 41% by using unbundled network elements (UNEs) they leased from other carriers, and 20% through resale arrangements with unaffiliated carriers.<sup>7</sup> See Table 3.
- Incumbent LECs reported providing about 16% fewer UNE loops with switching (referred to as the UNE-Platform) to unaffiliated carriers at the end of December 2006 than they reported six months earlier (7.1 million compared to 8.4 million) and about the same number of UNE loops without switching (4.4 million). See Table 4.
- About 6.8 million end-user switched access lines were provided by CLECs over coaxial cable connections. These lines represent about 61% of the 11.2 million end-user switched access lines that CLECs reported providing over their own local loop facilities, about 24% of all end-user switched access lines that CLECs reported, about 56% of CLEC lines to residential end users, about 4% of total end-user switched access lines, and about 7% of total residential switched access lines. See Tables 2, 3, and 5.
- Incumbent LECs were the presubscribed interstate long distance carrier for 58% of the switched access lines they provided to end users, while CLECs were the interstate long distance carrier for 76% of their switched access lines. See Table 6.

(Continued from previous page) \_\_\_\_\_

the CLEC operated in the incumbent LEC's service territory – and lines reported for the CLEC operations of these entities have been decreased by the same amount. Such adjustments are necessary when the merged entity treats the former CLEC operations as a separate business unit, and files a separate Form 477 for that business unit. SBC Communications, Inc. (SBC) and AT&T Corp. merged to form AT&T Inc. in November 2005, and AT&T Inc. merged with BellSouth on December 29, 2006. Verizon Communications Inc. and MCI, Inc. merged in January 2006.

<sup>6</sup> Form 477 filers report that end-user switched access lines are provided over their own local loop facilities when the filer (including affiliates) owns the local loop to the end user's premises. Therefore, unbundled network elements (UNEs) or services for resale that a CLEC acquires from an incumbent LEC become own-facilities lines, for purposes of Form 477, if the two entities merge. As previously noted, such lines are treated as incumbent LEC lines in this report, rather than as CLEC lines.

<sup>7</sup> CLEC "resale" lines should include lines that the CLEC provides by using special access lines or other facilities that it obtains from unaffiliated ILECs or CLECs as tariffed services or under commercial agreements.

- The Commission’s data collection program collates information about CLEC local telephone service lines (and the CLEC share of total local telephone service lines) in individual states. Relatively large numbers of CLEC lines are associated with the more populous states.<sup>8</sup> With respect to the calculated CLEC share of switched access lines in service, however, some less populous states, such as Nebraska, New Hampshire, North Dakota, Rhode Island, and South Dakota had larger CLEC shares than some more populous states, such as California, Florida, Georgia, Illinois, and Ohio. See Tables 7 - 10.<sup>9</sup>
- Among the 50 states, only Alaska and Hawaii had fewer than 10 reporting CLECs. See Table 13.
- Mobile telephony service providers reported 229.6 million subscribers at the end of December 2006, which is 26 million, or 13%, more than a year earlier. About 7% of these subscribers were billed by mobile telephony service resellers.<sup>10</sup> See Table 14.
- At least one CLEC was serving customers in 82% of the nation’s Zip Codes at the end of December 2006. About 98% of United States households resided in those Zip Codes. Moreover, multiple carriers reported providing local telephone service in the major population centers of the country. See Table 15 - 17, and the map that follows Table 19.

As other information from FCC Form 477 becomes available, it will be routinely posted on the Commission’s Internet site. We invite users of the information presented in this statistical summary to provide suggestions for improved data collection and analysis by:

- Using the attached customer response form,
- E-mailing comments to James.Eisner@fcc.gov,
- Calling the Industry Analysis and Technology Division of the Wireline Competition Bureau at (202) 418-0940, or
- Participating in any formal proceedings undertaken by the Commission to solicit comments for improvement of FCC Form 477.

---

<sup>8</sup> The largest numbers of CLEC lines are reported for California (3.0 million lines), New York (2.9 million lines), and Texas (2.0 million lines), the first, third, and second most populous states, respectively.

<sup>9</sup> CLEC shares appearing in Table 8 are based on CLEC and ILEC lines in Tables 9 and 10.

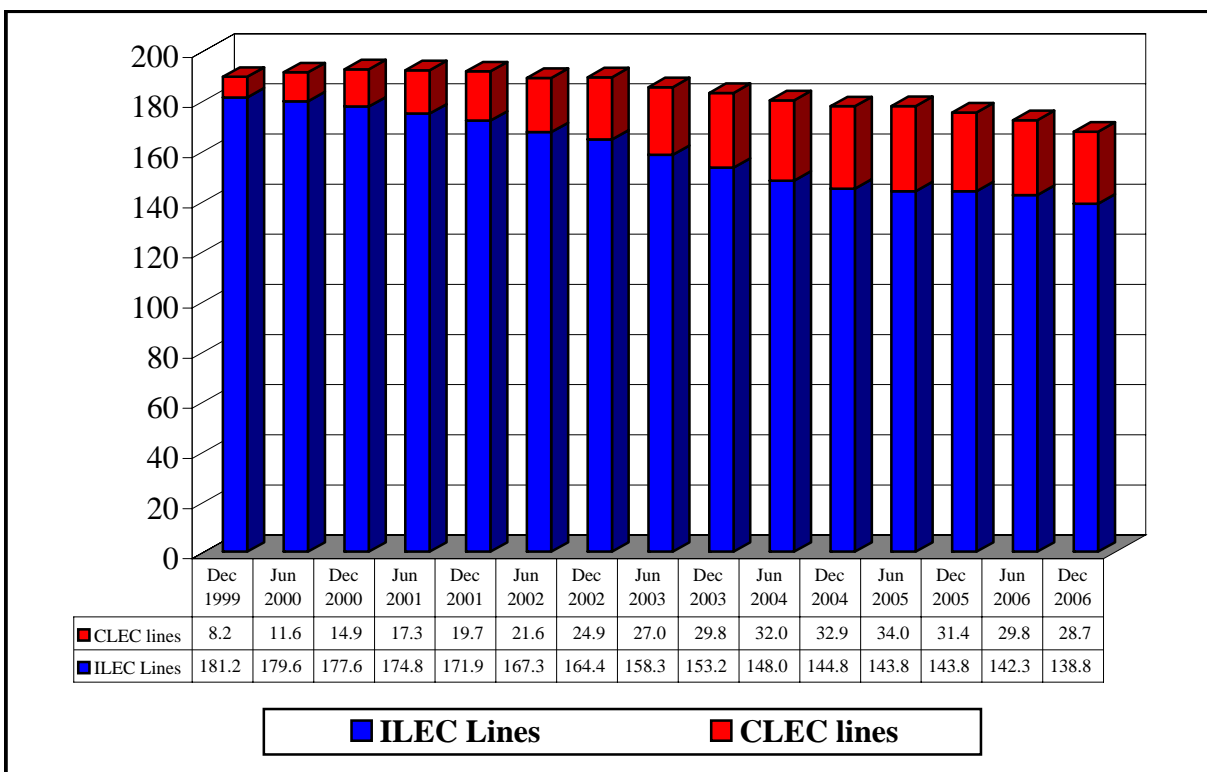
<sup>10</sup> The mobile “resale” percentage should not include any subscribers that the facilities-based provider serves on a pre-paid basis. For reporting purposes, a “facilities-based” mobile telephony service provider serves subscribers using spectrum licenses that it has obtained or manages.

**Table 1**  
**End-User Switched Access Lines Reported**

Date	ILEC Lines	CLEC Lines	Total	CLEC Share
Dec 1999	181,202,853	8,194,243	189,397,096	4.3 %
Jun 2000	179,648,725	11,557,381	191,206,106	6.0
Dec 2000	177,561,022	14,871,409	192,432,431	7.7
Jun 2001	174,752,275	17,274,727	192,027,002	9.0
Dec 2001	171,917,359	19,653,441	191,570,800	10.3
Jun 2002	167,330,006	21,644,928	188,974,934	11.5
Dec 2002	164,386,452	24,863,691	189,250,143	13.1
Jun 2003	158,274,538	26,985,345	185,259,883	14.6
Dec 2003	153,157,843	29,775,438	182,933,281	16.3
Jun 2004	147,993,218	32,033,915	180,027,133	17.8
Dec 2004	144,809,899	32,880,812	177,690,711	18.5
Jun 2005	143,757,708	33,975,336	177,733,044	19.1
Dec 2005	143,773,101	31,387,839	175,160,940	17.9
Jun 2006	142,293,047	29,793,745	172,086,792	17.3
Dec 2006	138,847,926	28,656,090	167,504,016	17.1

Only LECs with at least 10,000 lines in a state were required to report through December 2004. Beginning with the June 2005 data all LECs are required to report. Some data for June 2006 have been revised.

**Chart 1**  
**End-User Switched Access Lines Reported**  
**(Lines in Millions)**



**Table 2**  
**End-User Switched Access Lines by Customer Type**

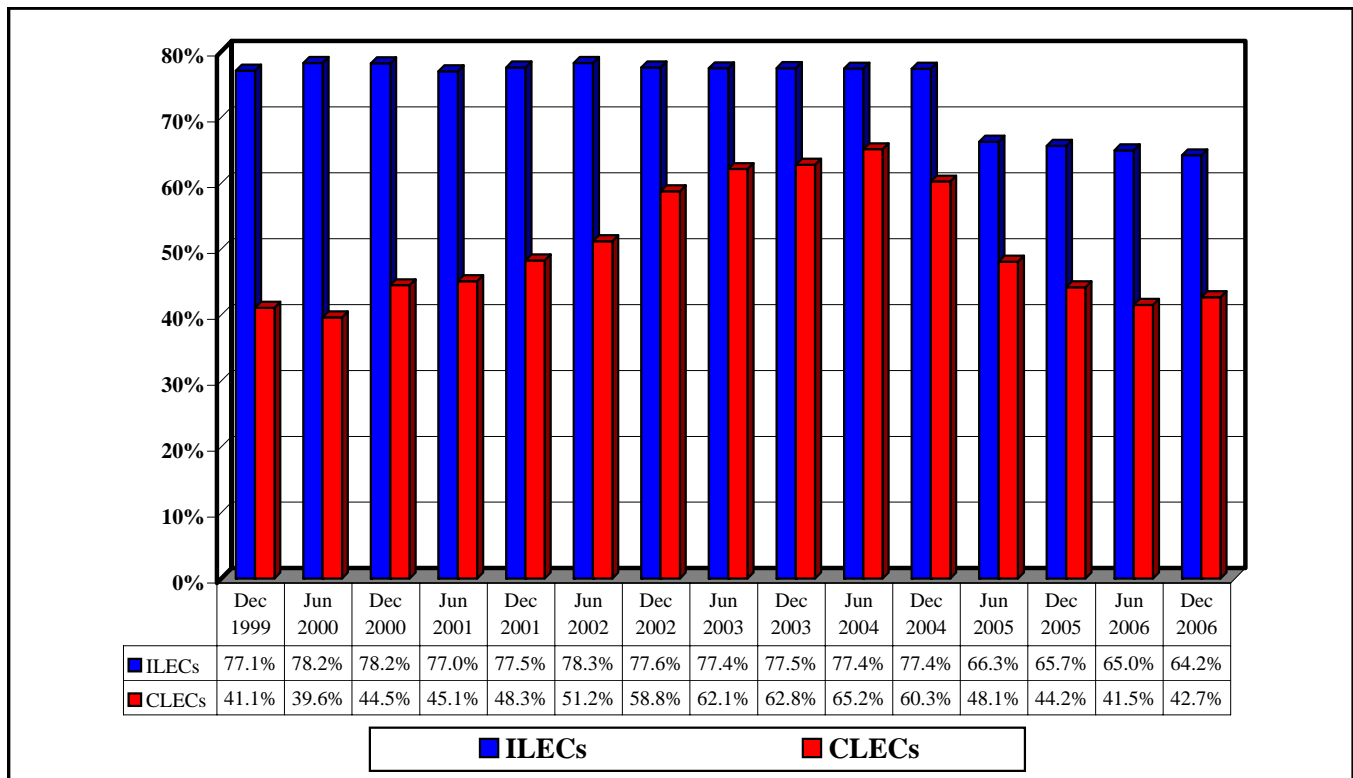
Date	Reporting ILECs			Reporting CLECs		
	Residential <sup>1</sup>	Business <sup>2</sup>	% Residential	Residential <sup>1</sup>	Business <sup>2</sup>	% Residential
Dec 1999	139,694,481	41,508,372	77.1 %	3,368,702	4,825,541	41.1 %
Jun 2000	140,566,144	39,082,581	78.2	4,579,501	6,977,880	39.6
Dec 2000	138,824,111	38,736,911	78.2	6,620,471	8,250,938	44.5
Jun 2001	134,530,884	40,221,391	77.0	7,793,071	9,481,656	45.1
Dec 2001	133,320,119	38,597,240	77.5	9,489,049	10,164,392	48.3
Jun 2002	130,937,328	36,392,678	78.3	11,080,676	10,564,252	51.2
Dec 2002	127,494,698	36,891,754	77.6	14,608,495	10,255,196	58.8
Jun 2003	122,573,530	35,701,008	77.4	16,770,561	10,214,784	62.1
Dec 2003	118,658,867	34,498,976	77.5	18,702,229	11,073,209	62.8
Jun 2004	114,533,368	33,459,850	77.4	20,871,756	11,162,159	65.2
Dec 2004	112,054,420	32,755,479	77.4	19,811,711	13,069,101	60.3
Jun 2005	95,315,689	48,442,019	66.3	16,338,117	17,637,219	48.1
Dec 2005	94,392,526	49,380,575	65.7	13,873,331	17,514,508	44.2
Jun 2006	92,453,320	49,839,727	65.0	12,372,070	17,421,675	41.5
Dec 2006	89,175,778	49,672,148	64.2	12,236,577	16,419,513	42.7

Only LECs with at least 10,000 lines in a state were required to report through December 2004. Beginning with the June 2005 data all LECs are required to report. Some data for June 2006 have been revised.

<sup>1</sup> Included small business lines through December 2004.

<sup>2</sup> Excluded small business lines through December 2004.

**Chart 2**  
**Percent of Lines That Serve Residential Customers <sup>1</sup>**



<sup>1</sup> Included small business lines through December 2004.

**Table 3**  
**Reporting Competitive Local Exchange Carriers**  
**(End-User Switched Access Lines in Thousands)**

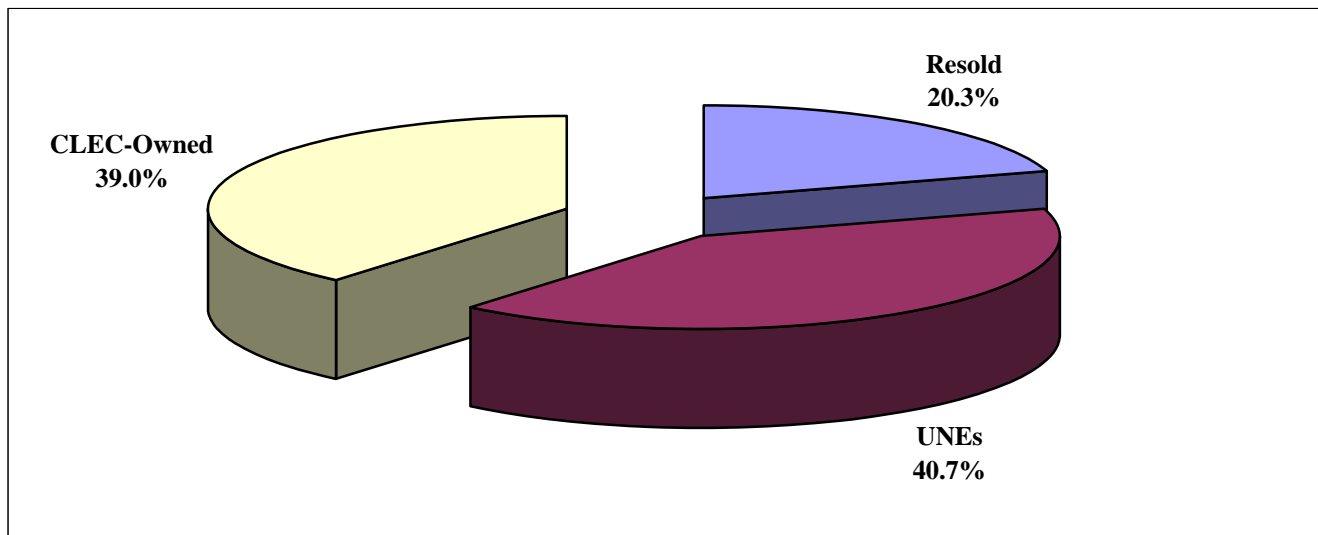
Date	CLECs Reporting	Total End-User Lines	Acquired from Other Carriers		CLEC-Owned Lines <sup>2</sup>	Percent		
			Resold Lines	UNEs <sup>1</sup>		Resold	UNEs	CLEC-Owned
Dec 1999	81	8,194	3,513	1,959	2,723	42.9%	23.9%	33.2%
Jun 2000	78	11,557	4,315	3,201	4,042	37.3	27.7	35.0
Dec 2000	89	14,871	4,114	5,540	5,217	27.7	37.3	35.1
Jun 2001	91	17,275	3,919	7,580	5,776	22.7	43.9	33.4
Dec 2001	94	19,653	4,250	9,332	6,072	21.6	47.5	30.9
Jun 2002	96	21,645	4,478	10,930	6,236	20.7	50.5	28.8
Dec 2002	112	24,864	4,677	13,709	6,479	18.8	55.1	26.1
Jun 2003	125	26,985	4,887	15,728	6,370	18.1	58.3	23.6
Dec 2003	136	29,775	4,842	17,888	7,045	16.3	60.1	23.7
Jun 2004	137	32,034	4,927	19,624	7,483	15.4	61.3	23.4
Dec 2004	149	32,881	5,417	18,961	8,503	16.5	57.7	25.9
Jun 2005	326	33,975	5,826	19,025	9,124	17.1	56.0	26.9
Dec 2005	382	31,388	6,704	14,521	10,163	21.4	46.3	32.4
Jun 2006	400	29,794	6,548	12,547	10,699	22.0	42.1	35.9
Dec 2006	396	28,656	5,818	11,669	11,169	20.3	40.7	39.0

Only LECs with at least 10,000 lines in a state were required to report through December 2004. Beginning with the June 2005 data all LECs are required to report. Figures may not add to totals due to rounding. Some data for June 2006 have been revised.

<sup>1</sup> Includes unbundled network element (UNE) loops leased from an unaffiliated carrier on a stand-alone basis and also UNE loops leased in combination with UNE switching or any other unbundled network element.

<sup>2</sup> Lines provided over CLEC-owned "last-mile" facilities.

**Chart 3**  
**Competitive Local Exchange Carriers' End-User Lines**



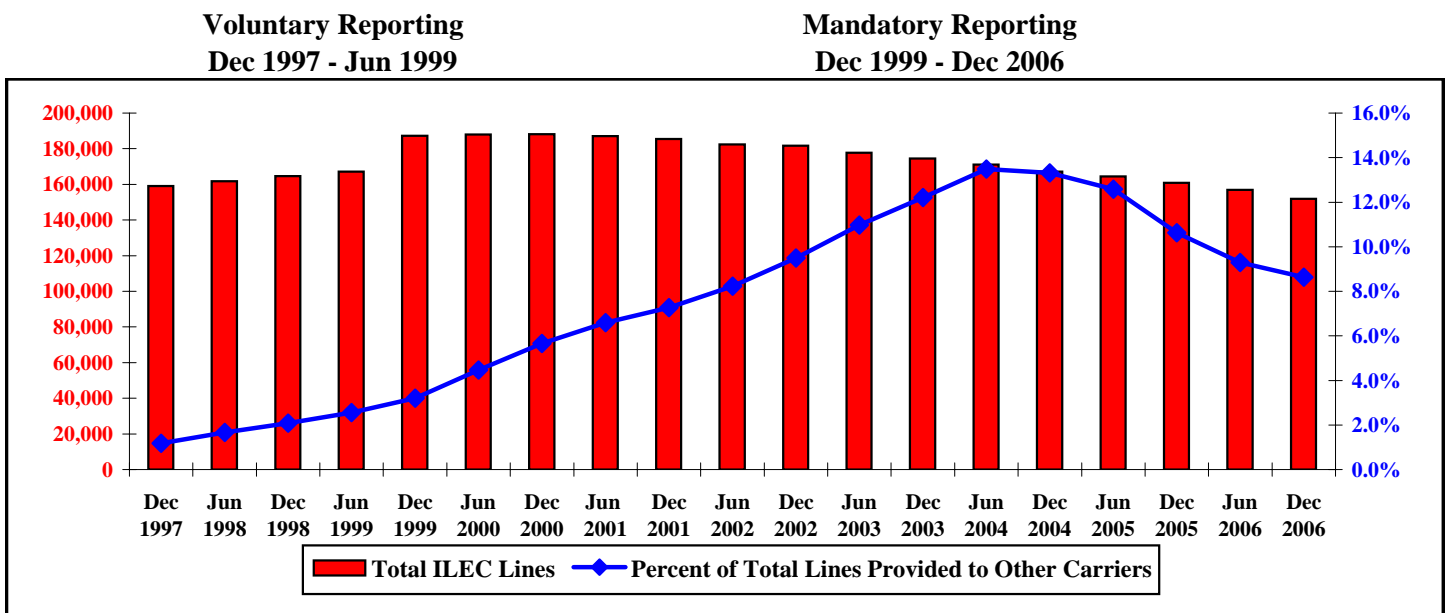
**Table 4**  
**Reporting Incumbent Local Exchange Carriers**  
**(Switched Access Lines in Thousands)**

Date <sup>1</sup>	ILECs Reporting	Total Lines	End-User Lines	Provided to Other Carriers					
				Resold Lines	UNEs			Total UNEs & Resold Lines	Percent of Total Lines
					Without Switching	With Switching	Total UNEs		
Dec 1997	9	159,008	157,132	1,743			133	1,876	1.2 %
Jun 1998	8	161,810	159,118	2,448			244	2,692	1.7
Dec 1998	7	164,614	161,191	3,062			361	3,423	2.1
Jun 1999	7	167,177	162,909	3,583			685	4,268	2.6
Dec 1999	168	187,190	181,203	4,494	1,004	489	1,493	5,987	3.2
Jun 2000	159	188,058	179,649	5,098	1,696	1,616	3,312	8,409	4.5
Dec 2000	166	188,223	177,561	5,388	2,436	2,838	5,274	10,662	5.7
Jun 2001	156	187,092	174,752	4,417	3,161	4,761	7,922	12,340	6.6
Dec 2001	164	185,391	171,917	4,014	3,679	5,781	9,460	13,474	7.3
Jun 2002	166	182,345	167,330	3,475	4,061	7,478	11,540	15,015	8.2
Dec 2002	174	181,616	164,386	2,743	4,259	10,227	14,487	17,229	9.5
Jun 2003	181	177,770	158,275	2,232	4,227	13,036	17,263	19,495	11.0
Dec 2003	185	174,453	153,158	1,833	4,287	15,176	19,463	21,296	12.2
Jun 2004	185	171,050	147,993	1,600	4,322	17,136	21,458	23,057	13.5
Dec 2004	190	167,063	144,810	1,490	4,217	16,546	20,763	22,253	13.3
Jun 2005	757	164,449	143,758	1,796	4,300	14,596	18,895	20,691	12.6
Dec 2005	807	160,881	143,773	1,793	4,469	10,846	15,315	17,108	10.6
Jun 2006	805	156,872	142,293	1,723	4,413	8,443	12,856	14,579	9.3
Dec 2006	814	151,972	138,848	1,613	4,408	7,103	11,511	13,124	8.6

Figures may not add to totals due to rounding. Some data for June 2006 have been revised.

<sup>1</sup> Data prior to December 1999 are from Common Carrier Bureau voluntary surveys. Only LECs with at least 10,000 lines in a state were required to report data for December 1999 through December 2004, after which all LECs are required to report.

**Chart 4**  
**ILEC Lines and the Percent Provided to Other Carriers**



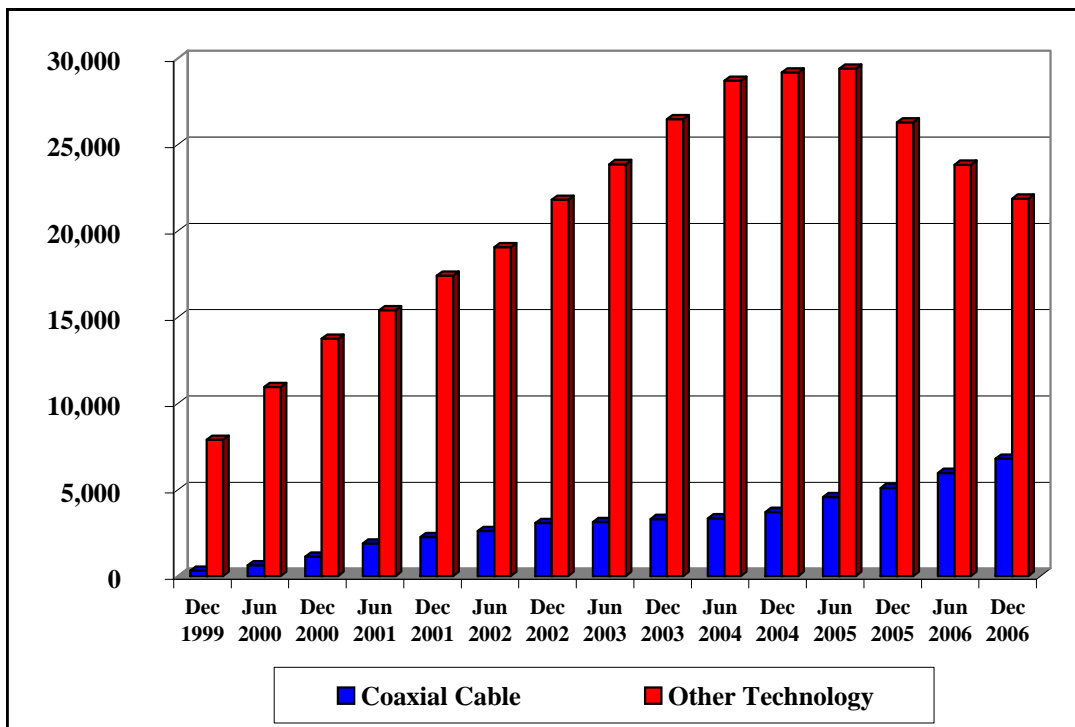


**Table 5**  
**Competitive Local Exchange Carrier Lines by Type of Technology**  
**(End-User Switched Access Lines in Thousands)**

Date	Coaxial Cable	Other Technologies	Total	Percent Coaxial Cable
Dec 1999	308	7,886	8,194	3.8 %
Jun 2000	614	10,943	11,557	5.3
Dec 2000	1,125	13,746	14,871	7.6
Jun 2001	1,876	15,399	17,275	10.9
Dec 2001	2,246	17,408	19,653	11.4
Jun 2002	2,597	19,048	21,645	12.0
Dec 2002	3,071	21,793	24,864	12.4
Jun 2003	3,123	23,863	26,985	11.6
Dec 2003	3,301	26,474	29,775	11.1
Jun 2004	3,338	28,696	32,034	10.4
Dec 2004	3,706	29,174	32,881	11.3
Jun 2005	4,571	29,404	33,975	13.5
Dec 2005	5,100	26,287	31,388	16.2
Jun 2006	5,968	23,826	29,794	20.0
Dec 2006	6,793	21,863	28,656	23.7

Only LECs with at least 10,000 lines in a state were required to report through December 2004. Beginning with the June 2005 data all LECs are required to report. Some data for June 2006 have been revised.

**Chart 5**  
**Competitive Local Exchange Carrier Lines by Type of Technology**  
**(End-User Switched Access Lines in Thousands)**



**Table 6**  
**Presubscribed Interstate Long Distance Lines**  
**(In Thousands)**

	<b>December 31, 2006</b>				
	<b>RBOC</b>	<b>Other ILEC</b>	<b>ILEC Total</b>	<b>CLEC</b>	<b>Total</b>
<b>Residential</b>					
Presubscribed	48,207	9,757	57,964	10,534	68,498
Not Presubscribed	24,803	6,409	31,212	1,702	32,914
All Lines	73,010	16,166	89,176	12,237	101,412
Percent Presubscribed	66%	60%	65%	86%	68%
<b>Business</b>					
Presubscribed	20,304	2,466	22,769	11,187	33,956
Not Presubscribed	22,996	3,906	26,903	5,233	32,914
All Lines	43,300	6,372	49,672	16,420	66,092
Percent Presubscribed	47%	39%	46%	68%	51%
<b>Total</b>					
Presubscribed	68,510	12,223	80,733	21,721	102,454
Not Presubscribed	47,799	10,315	58,114	6,935	65,050
All Lines	116,310	22,538	138,848	28,656	167,504
Percent Presubscribed	59%	54%	58%	76%	61%
	<b>June 30, 2006</b>				
	<b>RBOC</b>	<b>Other ILEC</b>	<b>ILEC Total</b>	<b>CLEC</b>	<b>Total</b>
<b>Residential</b>					
Presubscribed	44,696	9,599	54,295	10,533	64,828
Not Presubscribed	31,152	7,006	38,159	1,839	39,997
All Lines	75,848	16,606	92,453	12,372	104,825
Percent Presubscribed	59%	58%	59%	85%	62%
<b>Business</b>					
Presubscribed	16,586	2,383	18,969	12,012	30,981
Not Presubscribed	26,895	3,976	30,871	5,410	39,997
All Lines	43,481	6,359	49,840	17,422	67,261
Percent Presubscribed	38%	37%	38%	69%	46%
<b>Total</b>					
Presubscribed	61,282	11,982	73,264	22,545	95,809
Not Presubscribed	58,047	10,982	69,029	7,249	76,278
All Lines	119,329	22,964	142,293	29,794	172,087
Percent Presubscribed	51%	52%	51%	76%	56%

Figures may not add to totals due to rounding. Some data for June 2006 have been revised.

**Table 7**  
**End-User Switched Access Lines Served by Reporting Local Exchange Carriers**  
**(As of December 31, 2006)**

<b>State</b>	<b>ILECs</b>	<b>CLECs</b>	<b>Total</b>	<b>CLEC Share</b>
Alabama	2,016,443	300,675	2,317,118	13 %
Alaska	321,138	*	*	*
American Samoa	10,737	0	10,737	0
Arizona	2,175,239	1,017,866	3,193,105	32
Arkansas	1,163,744	166,346	1,330,090	13
California	18,926,123	3,045,769	21,971,892	14
Colorado	2,206,511	452,270	2,658,781	17
Connecticut	1,848,934	261,499	2,110,433	12
Delaware	450,371	100,159	550,530	18
District of Columbia	854,986	143,615	998,601	14
Florida	8,974,705	1,339,771	10,314,476	13
Georgia	4,045,038	654,696	4,699,734	14
Guam	68,091	0	68,091	0
Hawaii	583,800	74,309	658,109	11
Idaho	664,163	76,063	740,226	10
Illinois	6,154,122	1,075,230	7,229,352	15
Indiana	2,971,103	335,322	3,306,425	10
Iowa	1,273,178	234,977	1,508,155	16
Kansas	1,073,934	369,187	1,443,121	26
Kentucky	1,725,176	313,256	2,038,432	15
Louisiana	1,825,156	357,862	2,183,018	16
Maine	669,004	122,984	791,988	16
Maryland	3,079,098	552,190	3,631,288	15
Massachusetts	2,927,081	928,137	3,855,218	24
Michigan	4,303,103	882,821	5,185,924	17
Minnesota	2,223,797	627,375	2,851,172	22
Mississippi	1,108,030	124,832	1,232,862	10
Missouri	2,777,895	408,109	3,186,004	13
Montana	445,368	71,746	517,114	14
Nebraska	643,858	248,839	892,697	28
Nevada	1,200,201	218,960	1,419,161	15
New Hampshire	597,625	182,196	779,821	23
New Jersey	4,543,272	977,119	5,520,391	18
New Mexico	859,647	75,169	934,816	8
New York	7,900,420	2,941,533	10,841,953	27
North Carolina	4,067,105	767,508	4,834,613	16
North Dakota	267,339	70,031	337,370	21
Northern Mariana Islands	20,644	0	20,644	0
Ohio	5,167,995	962,245	6,130,240	16
Oklahoma	1,425,484	387,450	1,812,934	21
Oregon	1,561,802	317,921	1,879,723	17
Pennsylvania	6,174,592	1,437,452	7,612,044	19
Puerto Rico	993,726	*	*	*
Rhode Island	339,641	287,218	626,859	46
South Carolina	1,908,827	321,155	2,229,982	14
South Dakota	278,416	119,025	397,441	30
Tennessee	2,695,269	464,373	3,159,642	15
Texas	9,738,139	1,968,836	11,706,975	17
Utah	894,463	244,772	1,139,235	21
Vermont	362,375	47,827	410,202	12
Virgin Islands	68,269	0	68,269	0
Virginia	3,734,171	1,031,839	4,766,010	22
Washington	2,868,067	479,283	3,347,350	14
West Virginia	827,656	119,160	946,816	13
Wisconsin	2,604,820	652,562	3,257,382	20
Wyoming	238,035	43,552	281,587	15
Nationwide	138,847,926	28,656,090	167,504,016	17 %

\* Data withheld to maintain firm confidentiality.

**Table 8**  
**Competitive Local Exchange Carrier Share of End-User Switched Access Lines**

State	2000		2001		2002		2003		2004		2005		2006	
	Jun	Dec	Jun	Dec	Jun	Dec	Jun	Dec	Jun	Dec	Jun	Dec	Jun	Dec
Alabama	3 %	4 %	5 %	5 %	5 %	9 %	11 %	13 %	15 %	16 %	16	15 %	16 %	13 %
Alaska	*	*	*	*	*	*	*	*	*	*	*	*	26	*
American Samoa	NA	NA	NA	NA	NA	NA	NA	NA	NA	NA	0	0	0	0
Arizona	5	5	7	9	11	12	16	22	25	25	27	30	30	32
Arkansas	*	*	*	*	*	10	*	11	12	12	13	11	12	13
California	5	6	7	8	9	11	13	15	16	17	18	13	13	14
Colorado	7	9	10	13	14	15	16	17	17	16	17	20	19	17
Connecticut	5	6	7	7	9	9	10	10	11	13	14	11	12	12
Delaware	*	*	0	0	*	*	9	12	16	16	20	20	18	18
District of Columbia	7	9	12	13	16	14	16	17	19	19	20	17	14	14
Florida	6	6	7	7	9	13	13	14	16	16	16	17	15	13
Georgia	6	8	10	11	13	15	17	18	19	20	21	18	19	14
Guam	NA	NA	NA	NA	NA	NA	NA	NA	NA	NA	NA	0	0	0
Hawaii	*	0	*	*	*	*	*	*	*	*	6	7	9	11
Idaho	0	*	*	*	*	*	5	6	7	7	10	10	11	10
Illinois	7	9	13	15	17	19	19	20	21	22	20	15	15	15
Indiana	4	5	5	5	7	8	9	13	14	13	14	10	10	10
Iowa	9	11	11	12	12	13	13	13	14	14	14	14	15	16
Kansas	5	7	8	9	12	17	21	21	22	24	25	21	24	26
Kentucky	*	3	*	*	*	4	5	8	11	11	14	15	16	15
Louisiana	2	3	4	4	5	7	9	10	12	14	19	17	18	16
Maine	*	*	*	*	*	*	8	10	14	18	20	20	16	16
Maryland	3	4	6	4	6	7	10	14	16	18	18	18	16	15
Massachusetts	8	11	12	15	16	16	18	21	23	25	25	25	24	24
Michigan	5	6	9	13	18	21	22	25	26	26	25	19	18	17
Minnesota	7	9	11	13	14	17	17	19	20	21	21	24	23	22
Mississippi	*	4	4	3	2	6	7	9	10	10	14	12	13	10
Missouri	5	6	6	7	8	10	10	11	13	13	14	11	13	13
Montana	*	*	*	*	*	*	3	4	4	4	8	10	12	14
Nebraska	*	*	*	12	16	18	20	21	22	25	25	26	27	28
Nevada	*	*	10	*	*	11	9	10	11	11	13	13	17	15
New Hampshire	*	6	8	10	13	14	16	17	20	23	25	25	24	23
New Jersey	4	5	4	5	6	10	15	19	20	22	22	21	17	18
New Mexico	*	*	*	*	*	*	*	*	8	8	8	7	8	8
New York	16	20	23	25	25	24	27	28	30	30	30	31	27	27
North Carolina	4	4	6	6	6	8	9	9	11	13	13	15	15	16
North Dakota	*	*	*	*	*	*	*	8	8	7	20	19	20	21
Northern Mariana Isl.	NA	NA	NA	NA	NA	NA	NA	NA	NA	NA	NA	0	0	0
Ohio	4	4	4	5	7	9	11	14	15	15	15	15	15	16
Oklahoma	*	5	6	8	10	11	11	14	13	16	18	18	20	21
Oregon	3	4	5	7	7	9	8	12	13	16	13	19	16	17
Pennsylvania	8	10	13	14	15	16	17	19	20	22	23	23	20	19
Puerto Rico	*	*	*	*	*	*	*	*	*	*	*	*	*	*
Rhode Island	*	*	10	16	18	21	25	28	32	35	40	42	43	46
South Carolina	*	4	4	3	5	7	9	9	10	11	13	13	15	14
South Dakota	*	*	*	*	*	*	14	18	*	*	30	33	33	30
Tennessee	6	6	8	8	7	9	10	11	14	15	16	17	18	15
Texas	7	13	14	16	16	17	18	18	19	19	19	16	16	17
Utah	6	10	11	13	13	15	19	20	23	24	23	22	24	21
Vermont	*	*	*	*	*	*	*	*	*	*	14	12	12	12
Virgin Islands	0	0	0	0	0	0	0	0	0	0	*	*	*	0
Virginia	5	7	9	11	12	12	14	17	20	21	21	22	21	22
Washington	5	6	6	8	9	10	10	11	13	14	14	14	14	14
West Virginia	*	*	*	*	*	*	*	*	*	11	12	12	12	13
Wisconsin	7	8	9	11	12	13	15	18	19	18	19	18	19	20
Wyoming	*	*	*	*	*	*	*	*	*	*	11	12	14	15
Nationwide	6 %	8 %	9 %	10 %	11 %	13 %	15 %	16 %	18 %	18 %	19 %	18 %	17 %	17 %

\* Data withheld to maintain firm confidentiality. NA is an abbreviation for not applicable. Some data for June 2006 have been revised.

Only LECs with at least 10,000 lines in a state were required to report through December 2004. Beginning with the June 2005 data all LECs are required to report.

**Table 9**  
**End-User Switched Access Lines Served by Reporting Competitive Local Exchange Carriers**

State	2000	2001	2002	2003	2004	2005		2006	
	Dec	Dec	Dec	Dec	Dec	Jun	Dec	Jun	Dec
Alabama	104,933	117,159	215,962	302,911	369,923	393,856	359,149	365,944	300,675
Alaska	*	*	*	*	*	*	*	116,432	*
American Samoa	0	0	0	0	0	0	0	0	0
Arizona	165,597	310,517	400,080	707,477	792,272	864,526	978,582	970,453	1,017,866
Arkansas	*	*	144,411	146,513	151,118	181,656	152,089	162,545	166,346
California	1,498,146	2,003,404	2,705,851	3,422,373	3,905,815	4,030,126	3,023,367	2,900,279	3,045,769
Colorado	286,955	391,257	482,014	505,772	473,193	496,728	590,821	528,727	452,270
Connecticut	154,349	187,450	236,462	242,643	300,221	316,131	251,351	261,681	261,499
Delaware	*	0	*	71,230	95,464	121,800	118,235	101,513	100,159
District of Columbia	94,850	126,461	160,174	180,680	211,752	222,977	172,671	144,600	143,615
Florida	718,157	866,809	1,509,299	1,576,562	1,818,671	1,744,981	1,868,560	1,617,538	1,339,771
Georgia	462,392	600,087	807,935	913,567	1,002,671	1,032,383	886,413	909,236	654,696
Guam	0	0	0	0	0	0	0	0	0
Hawaii	0	*	*	*	*	38,447	49,317	60,696	74,309
Idaho	*	*	*	46,858	47,442	77,018	75,951	80,698	76,063
Illinois	803,492	1,341,060	1,602,482	1,662,007	1,712,232	1,601,784	1,135,562	1,139,239	1,075,230
Indiana	191,921	205,845	284,532	457,657	472,491	493,450	359,622	338,113	335,322
Iowa	164,069	186,254	201,176	188,645	195,144	216,229	221,758	229,603	234,977
Kansas	106,686	145,659	258,312	310,032	335,946	362,494	301,121	346,533	369,187
Kentucky	56,392	*	92,483	162,391	220,362	302,425	306,370	337,467	313,256
Louisiana	69,437	93,107	188,652	229,051	323,623	459,748	365,473	394,199	357,862
Maine	*	*	*	78,050	143,207	168,895	163,818	134,610	122,984
Maryland	160,126	158,999	285,416	555,282	693,940	716,741	690,791	590,557	552,190
Massachusetts	509,731	669,209	750,473	973,607	1,089,437	1,089,068	1,036,974	978,953	928,137
Michigan	366,305	865,182	1,362,217	1,547,619	1,571,391	1,482,865	1,048,822	992,598	882,821
Minnesota	287,660	394,310	572,708	581,234	609,495	643,452	724,198	675,623	627,375
Mississippi	63,515	43,578	74,410	111,657	127,282	174,913	155,966	161,058	124,832
Missouri	203,537	262,947	336,895	362,346	411,039	451,936	368,561	425,768	408,109
Montana	*	*	*	18,616	20,401	43,205	52,014	61,726	71,746
Nebraska	*	144,229	177,698	199,498	216,723	228,138	237,496	244,058	248,839
Nevada	*	*	163,520	150,615	152,285	185,347	182,033	245,553	218,960
New Hampshire	52,137	85,549	125,893	142,385	192,674	217,847	209,366	195,539	182,196
New Jersey	323,680	330,005	697,176	1,235,977	1,394,412	1,389,235	1,282,857	993,630	977,119
New Mexico	*	*	*	*	76,443	75,643	65,123	76,512	75,169
New York	2,769,814	3,353,394	3,175,265	3,596,739	3,627,966	3,574,947	3,552,701	3,043,468	2,941,533
North Carolina	230,733	302,044	405,853	476,299	628,285	627,184	748,608	695,429	767,508
North Dakota	*	*	*	25,039	20,478	68,767	66,830	68,351	70,031
Northern Mariana Isl.	0	0	0	0	0	0	0	0	0
Ohio	308,213	352,811	652,104	946,303	963,330	981,363	953,386	963,094	962,245
Oklahoma	102,456	160,186	207,798	270,313	286,138	328,505	329,248	361,715	387,450
Oregon	99,326	153,084	183,319	249,696	317,675	260,065	375,380	305,519	317,921
Pennsylvania	870,618	1,186,897	1,405,894	1,585,025	1,828,160	1,877,661	1,891,822	1,572,224	1,437,452
Puerto Rico	*	*	*	*	*	*	*	*	*
Rhode Island	*	108,190	145,202	187,936	229,179	267,486	264,827	275,526	287,218
South Carolina	89,255	72,035	171,572	218,095	240,281	290,102	291,941	329,943	321,155
South Dakota	*	*	*	64,784	*	128,053	136,073	135,275	119,025
Tennessee	222,917	268,222	329,150	380,298	481,997	538,227	543,386	575,957	464,373
Texas	1,764,676	2,166,033	2,182,929	2,265,505	2,278,556	2,332,263	1,884,267	1,905,521	1,968,836
Utah	129,834	155,992	194,352	241,454	286,966	280,696	260,478	281,796	244,772
Vermont	*	*	*	*	*	60,569	51,405	49,094	47,827
Virgin Islands	0	0	0	0	0	*	*	*	0
Virginia	336,826	537,753	639,330	873,022	1,074,184	1,058,163	1,110,090	1,046,894	1,031,839
Washington	240,514	336,230	406,750	433,967	501,518	505,432	514,149	506,360	479,283
West Virginia	*	*	*	*	107,134	117,620	118,349	117,009	119,160
Wisconsin	278,087	367,195	477,915	603,492	593,293	644,787	588,388	611,912	652,562
Wyoming	*	*	*	*	*	30,425	34,004	39,443	43,552
Total	14,871,409	19,653,441	24,863,691	29,775,438	32,880,812	33,975,336	31,387,839	29,793,745	28,656,090

\* Data withheld to maintain firm confidentiality.

Only LECs with at least 10,000 lines in a state were required to report through December 2004. Beginning with the June 2005 data all LECs are required to report. Some data for June 2006 have been revised.

**Table 10**  
**End-User Switched Access Lines Served by Reporting Incumbent Local Exchange Carriers**

State	2000	2001	2002	2003	2004	2005		2006	
	Dec	Dec	Dec	Dec	Dec	Jun	Dec	Jun	Dec
Alabama	2,424,197	2,381,574	2,238,352	2,046,244	1,971,269	2,024,441	2,024,260	1,978,871	2,016,443
Alaska	401,177	338,941	327,183	316,233	299,899	328,415	326,374	324,892	321,138
American Samoa	0	0	0	0	0	10,659	10,838	11,008	10,737
Arizona	3,073,779	2,981,156	2,878,210	2,541,931	2,367,011	2,325,669	2,295,247	2,226,531	2,175,239
Arkansas	1,420,169	1,363,454	1,257,291	1,212,895	1,153,302	1,216,081	1,215,421	1,192,839	1,163,744
California	23,250,580	22,771,976	21,475,881	20,111,818	19,140,976	18,944,739	19,630,709	19,479,382	18,926,123
Colorado	2,833,948	2,727,654	2,642,166	2,496,330	2,403,583	2,370,884	2,337,733	2,276,358	2,206,511
Connecticut	2,382,208	2,329,716	2,266,558	2,172,574	2,045,255	1,984,587	1,962,233	1,928,048	1,848,934
Delaware	555,913	552,331	562,577	525,331	485,278	478,837	467,428	467,676	450,371
District of Columbia	922,531	865,008	976,228	901,056	892,860	894,341	871,773	891,832	854,986
Florida	11,349,981	11,019,972	10,406,129	9,975,073	9,539,410	9,345,496	9,209,755	9,013,194	8,974,705
Georgia	4,988,949	4,723,842	4,423,324	4,187,544	3,990,388	3,972,427	3,969,582	3,843,615	4,045,038
Guam	0	0	0	0	0	0	67,011	67,721	68,091
Hawaii	744,205	735,459	723,111	698,178	673,259	643,998	627,319	608,403	583,800
Idaho	733,580	706,991	700,089	678,088	659,009	682,165	672,447	666,382	664,163
Illinois	7,875,563	7,578,706	6,994,127	6,517,977	6,225,760	6,214,096	6,497,122	6,354,337	6,154,122
Indiana	3,574,414	3,637,893	3,459,873	3,188,863	3,056,392	3,070,315	3,111,533	3,079,875	2,971,103
Iowa	1,387,746	1,356,643	1,329,633	1,285,764	1,210,098	1,355,951	1,324,575	1,301,575	1,273,178
Kansas	1,498,636	1,397,937	1,236,051	1,149,527	1,067,801	1,110,300	1,122,549	1,100,313	1,073,934
Kentucky	2,166,664	2,173,958	2,100,313	1,910,272	1,772,039	1,791,507	1,768,140	1,731,842	1,725,176
Louisiana	2,506,348	2,440,988	2,353,620	2,146,036	2,000,230	1,953,820	1,832,399	1,800,472	1,825,156
Maine	804,652	764,536	797,973	737,751	661,288	688,379	663,772	692,360	669,004
Maryland	3,802,622	3,660,869	3,634,524	3,369,687	3,189,630	3,173,227	3,096,645	3,166,012	3,079,098
Massachusetts	4,252,502	3,931,469	3,914,218	3,565,171	3,321,129	3,245,760	3,102,061	3,075,544	2,927,081
Michigan	6,262,696	5,965,971	5,174,471	4,614,333	4,393,671	4,410,849	4,608,796	4,490,783	4,303,103
Minnesota	2,940,034	2,698,867	2,708,221	2,453,860	2,317,299	2,384,842	2,318,991	2,273,378	2,223,797
Mississippi	1,352,284	1,332,389	1,277,168	1,186,725	1,125,570	1,117,163	1,113,684	1,089,448	1,108,030
Missouri	3,418,983	3,328,130	3,145,872	2,997,347	2,852,641	2,892,074	2,907,056	2,841,990	2,777,895
Montana	529,878	521,550	509,979	490,505	471,621	487,046	472,596	460,058	445,368
Nebraska	949,217	1,030,125	828,394	736,105	665,963	692,446	681,113	661,351	643,858
Nevada	1,353,193	1,352,724	1,348,042	1,301,193	1,260,566	1,251,993	1,246,342	1,233,166	1,200,201
New Hampshire	805,143	758,515	743,300	703,594	653,880	645,599	624,329	624,466	597,625
New Jersey	6,747,131	6,482,459	6,200,678	5,425,840	4,972,805	4,846,691	4,714,621	4,784,134	4,543,272
New Mexico	957,195	965,946	965,816	919,450	879,539	902,178	892,715	876,787	859,647
New York	10,952,903	10,223,476	10,037,200	9,115,865	8,474,296	8,292,109	8,019,979	8,297,089	7,900,420
North Carolina	5,133,984	5,023,740	4,824,385	4,630,912	4,349,371	4,239,339	4,141,827	4,059,971	4,067,105
North Dakota	317,270	306,963	293,639	275,457	257,409	280,323	278,956	271,969	267,339
Northern Mariana Isl	0	0	0	0	0	0	22,770	21,313	20,644
Ohio	6,922,773	6,967,603	6,405,570	5,889,260	5,581,862	5,504,901	5,574,685	5,367,588	5,167,995
Oklahoma	1,950,618	1,873,489	1,726,359	1,638,861	1,524,900	1,534,575	1,520,798	1,469,601	1,425,484
Oregon	2,109,510	2,043,164	1,955,544	1,813,627	1,697,357	1,672,650	1,643,476	1,627,341	1,561,802
Pennsylvania	8,012,115	7,524,072	7,394,441	6,922,904	6,498,790	6,400,366	6,299,554	6,385,263	6,174,592
Puerto Rico	1,299,291	1,288,439	1,276,493	1,178,707	1,072,456	1,047,636	1,020,878	1,035,002	993,726
Rhode Island	627,784	570,513	542,069	482,392	420,277	394,144	369,454	362,993	339,641
South Carolina	2,314,649	2,276,681	2,210,548	2,100,205	2,002,526	1,895,283	1,938,813	1,907,925	1,908,827
South Dakota	309,349	327,150	309,173	297,540	269,271	297,036	279,170	279,589	278,416
Tennessee	3,412,145	3,289,154	3,147,556	2,943,127	2,773,968	2,727,436	2,717,515	2,675,649	2,695,269
Texas	11,892,768	11,365,441	10,766,127	10,269,558	9,780,440	9,730,233	10,036,157	9,958,460	9,738,139
Utah	1,174,625	1,086,537	1,075,061	993,796	923,458	917,429	924,423	915,178	894,463
Vermont	400,929	388,399	395,441	376,390	361,751	369,720	363,874	369,731	362,375
Virgin Islands	0	70,784	71,894	71,284	70,888	70,462	70,038	69,272	68,269
Virginia	4,317,626	4,436,193	4,512,398	4,192,316	3,996,369	3,924,917	3,834,232	3,843,853	3,734,171
Washington	3,784,183	3,635,702	3,553,994	3,375,160	3,204,555	3,136,578	3,062,790	2,993,977	2,868,067
West Virginia	927,432	967,218	974,090	954,583	896,304	891,492	875,854	852,152	827,656
Wisconsin	3,178,516	3,121,462	3,063,426	2,834,559	2,699,412	2,725,490	2,739,056	2,669,652	2,604,820
Wyoming	256,434	253,430	251,672	238,045	234,818	248,614	251,633	244,836	238,035
Total	177,561,022	171,917,359	164,386,452	153,157,843	144,809,899	143,757,708	143,773,101	142,293,047	138,847,926

Only LECs with at least 10,000 lines in a state were required to report through December 2004. Beginning with the June 2005 data all LECs are required to report. Some data for June 2006 have been revised.

**Table 11**  
**CLEC-Reported End-User Switched Access Lines by State**  
**(As of December 31, 2006)**

<b>State</b>	<b>Resold Lines</b>	<b>UNEs</b>	<b>CLEC-Owned</b>	<b>Total</b>
Alabama	24,459	189,115	87,105	300,675
Alaska	*	*	*	*
American Samoa	0	0	0	0
Arizona	157,033	168,797	692,036	1,017,866
Arkansas	3,938	75,722	86,686	166,346
California	777,451	905,782	1,362,536	3,045,769
Colorado	100,818	203,639	147,813	452,270
Connecticut	48,378	82,837	130,286	261,499
Delaware	33,878	60,252	6,029	100,159
District of Columbia	51,116	41,618	50,881	143,615
Florida	331,945	703,982	303,847	1,339,771
Georgia	56,439	380,561	217,698	654,696
Guam	0	0	0	0
Hawaii	27,791	5,122	41,396	74,309
Idaho	17,652	40,562	17,848	76,063
Illinois	91,936	579,871	403,423	1,075,230
Indiana	38,940	181,944	114,439	335,322
Iowa	45,345	82,446	107,186	234,977
Kansas	13,571	138,957	216,659	369,187
Kentucky	55,724	114,843	142,691	313,256
Louisiana	17,248	149,651	190,964	357,862
Maine	31,690	46,310	44,984	122,984
Maryland	249,106	255,114	47,969	552,190
Massachusetts	280,771	269,455	377,911	928,137
Michigan	33,970	699,624	149,225	882,821
Minnesota	128,466	266,095	232,814	627,375
Mississippi	15,382	89,753	19,698	124,832
Missouri	22,543	174,709	210,862	408,109
Montana	8,683	13,158	49,905	71,746
Nebraska	*	*	191,942	248,839
Nevada	23,958	97,124	97,878	218,960
New Hampshire	46,146	76,416	59,634	182,196
New Jersey	520,812	310,872	145,439	977,119
New Mexico	29,998	20,504	24,667	75,169
New York	1,032,989	847,061	1,061,481	2,941,533
North Carolina	101,045	296,951	369,513	767,508
North Dakota	7,280	46,289	16,461	70,031
Northern Mariana Islands	0	0	0	0
Ohio	87,494	371,525	503,230	962,245
Oklahoma	4,724	118,072	264,653	387,450
Oregon	49,354	217,591	50,978	317,921
Pennsylvania	350,715	665,274	421,466	1,437,452
Puerto Rico	*	*	*	*
Rhode Island	*	43,138	*	287,218
South Carolina	17,793	165,603	137,760	321,155
South Dakota	32,303	24,204	62,518	119,025
Tennessee	59,272	249,694	155,405	464,373
Texas	222,281	865,128	881,425	1,968,836
Utah	46,590	135,016	63,165	244,772
Vermont	*	25,472	*	47,827
Virgin Islands	0	0	0	0
Virginia	256,776	319,448	455,615	1,031,839
Washington	88,526	246,414	144,342	479,283
West Virginia	28,067	77,939	13,155	119,160
Wisconsin	31,663	386,750	234,151	652,562
Wyoming	2,823	16,618	24,111	43,552
<b>Total</b>	<b>5,818,469</b>	<b>11,668,896</b>	<b>11,168,753</b>	<b>28,656,090</b>

\* Data withheld to maintain firm confidentiality.

**Table 12**  
**Percentage of Lines Provided to Residential Customers**

State	ILECs		CLECs		Total	
	Jun 2006	Dec 2006	Jun 2006	Dec 2006	Jun 2006	Dec 2006
Alabama	72	71	40	37	67	67
Alaska	55	55	65	61	58	57
American Samoa	54	53	NA	NA	54	53
Arizona	65	65	62	63	64	64
Arkansas	68	67	40	39	64	64
California	61	60	42	44	59	58
Colorado	68	67	28	27	61	61
Connecticut	65	65	40	42	62	62
Delaware	65	64	31	28	59	58
District of Columbia	24	24	17	16	23	23
Florida	68	67	24	25	62	61
Georgia	64	62	35	37	58	59
Guam	55	53	NA	NA	55	53
Hawaii	64	64	34	42	61	62
Idaho	69	69	27	28	64	65
Illinois	59	58	40	36	56	55
Indiana	66	66	43	42	64	64
Iowa	71	70	57	58	69	68
Kansas	63	62	64	67	63	63
Kentucky	69	68	61	63	68	67
Louisiana	66	66	53	52	64	63
Maine	75	75	42	45	70	70
Maryland	59	58	40	38	56	55
Massachusetts	63	62	39	37	57	56
Michigan	61	61	57	58	60	60
Minnesota	71	71	41	37	64	64
Mississippi	68	67	52	41	66	65
Missouri	68	68	50	53	66	66
Montana	69	68	49	57	67	67
Nebraska	58	58	61	60	59	59
Nevada	66	64	25	37	59	60
New Hampshire	73	73	33	29	63	63
New Jersey	62	61	36	33	58	56
New Mexico	72	69	28	26	68	66
New York	63	62	44	44	58	57
North Carolina	69	67	32	45	64	64
North Dakota	70	69	58	60	68	67
Northern Mariana Islands	50	49	NA	NA	50	49
Ohio	67	66	54	60	65	65
Oklahoma	68	66	61	62	66	65
Oregon	73	72	14	13	63	62
Pennsylvania	70	70	25	27	61	62
Puerto Rico	78	77	2	1	70	68
Rhode Island	65	64	60	60	63	62
South Carolina	70	69	41	45	66	66
South Dakota	65	65	65	75	65	68
Tennessee	72	70	28	26	64	64
Texas	64	63	50	51	62	61
Utah	68	67	27	26	59	58
Vermont	74	74	12	12	67	67
Virgin Islands	66	69	NA	NA	66	69
Virginia	60	59	47	47	57	57
Washington	70	70	21	21	63	63
West Virginia	76	77	21	21	70	70
Wisconsin	64	63	56	57	62	62
Wyoming	60	58	67	72	61	60
Nationwide	65	64	42	43	61	61

\* Data withheld to maintain firm confidentiality. NA is an abbreviation for not applicable. Some data for June 2006 have been revised.



**Table 13**  
**Number of Reporting Local Exchange Carriers**  
**(As of December 31, 2006)**

<b>State</b>	<b>ILECs</b>	<b>CLECs</b>	<b>Total</b>
Alabama	22	44	66
Alaska	17	4	21
American Samoa	1	0	1
Arizona	15	29	44
Arkansas	20	31	51
California	16	53	69
Colorado	21	32	53
Connecticut	2	25	27
Delaware	1	26	27
District of Columbia	1	29	30
Florida	10	68	78
Georgia	26	59	85
Guam	1	0	1
Hawaii	2	6	8
Idaho	20	23	43
Illinois	45	68	113
Indiana	31	50	81
Iowa	135	54	189
Kansas	37	39	76
Kentucky	17	54	71
Louisiana	11	40	51
Maine	9	21	30
Maryland	2	49	51
Massachusetts	4	38	42
Michigan	26	50	76
Minnesota	58	51	109
Mississippi	14	40	54
Missouri	33	40	73
Montana	15	23	38
Nebraska	34	24	58
Nevada	14	29	43
New Hampshire	7	24	31
New Jersey	3	50	53
New Mexico	16	22	38
New York	25	57	82
North Carolina	21	49	70
North Dakota	20	22	42
Northern Mariana Islands	1	0	1
Ohio	34	51	85
Oklahoma	36	36	72
Oregon	28	34	62
Pennsylvania	25	50	75
Puerto Rico	1	3	4
Rhode Island	1	21	22
South Carolina	17	44	61
South Dakota	25	19	44
Tennessee	18	47	65
Texas	52	70	122
Utah	14	19	33
Vermont	8	14	22
Virgin Islands	1	0	1
Virginia	14	42	56
Washington	17	37	54
West Virginia	7	23	30
Wisconsin	45	47	92
Wyoming	10	18	28
Nationwide - Unduplicated	814	396	1,210

Each report represents all of a company's operations in a given state. Carriers with both ILEC and CLEC operations in the same state provide separate reports.

**Table 14**  
**Mobile Wireless Telephone Subscribers <sup>1</sup>**

State	Dec 2006		Subscribers								
	Carriers <sup>1</sup>	Percent Resold <sup>2</sup>	2000	2001	2002	2003	2004	2005		2006	
			Dec	Dec	Dec	Dec	Dec	Jun	Dec	Jun	Dec
Alabama	12	5 %	1,386,294	1,979,075	1,987,254	2,242,108	2,580,810	2,874,367	3,104,664	3,275,933	3,374,701
Alaska	9	1	*	240,216	267,630	303,184	321,152	340,507	376,695	397,429	412,112
American Samoa	*	*	0	0	0	0	*	*	*	*	*
Arizona	10	9	1,855,115	2,171,021	2,520,058	2,843,061	3,299,222	3,542,844	3,844,357	4,153,491	4,405,032
Arkansas	6	7	743,928	970,127	1,156,345	1,296,901	1,458,673	1,680,975	1,780,621	1,924,313	2,044,217
California	12	5	12,710,520	15,052,203	17,575,105	20,360,454	23,457,761	24,572,034	25,537,232	27,496,682	29,717,334
Colorado	10	10	1,856,075	2,145,816	2,358,748	2,554,731	2,808,195	3,040,589	3,246,994	3,428,381	3,608,209
Connecticut	5	6	1,277,123	1,639,914	1,694,110	1,928,988	2,181,133	2,328,966	2,463,249	2,582,367	2,705,023
Delaware	4	8	371,014	412,611	438,196	543,526	646,064	585,113	618,165	650,328	682,636
Dist. of Columbia	4	6	354,735	404,489	472,832	513,102	657,774	752,548	825,195	878,846	880,077
Florida	9	6	6,369,985	8,937,063	9,482,349	10,855,430	13,169,278	12,619,929	12,568,133	14,176,756	14,761,666
Georgia	10	6	2,754,784	4,149,717	4,497,576	4,940,091	5,730,223	6,001,411	6,079,022	6,865,466	7,281,724
Guam	*	*	0	*	*	*	*	*	*	*	*
Hawaii	4	4	524,291	595,721	689,857	771,023	880,965	934,405	983,227	1,010,341	1,034,788
Idaho	15	7	344,564	444,864	536,064	605,488	705,948	773,893	834,219	901,455	972,825
Illinois	9	7	5,143,767	5,631,172	6,476,683	7,183,989	8,075,938	8,227,185	8,654,888	9,147,657	9,588,517
Indiana	8	11	1,715,074	1,921,356	2,390,567	2,642,810	3,158,002	3,442,612	3,715,504	3,972,560	4,271,412
Iowa	51	8	832,106	1,087,608	1,239,384	1,342,931	1,557,542	1,633,697	1,811,400	1,867,015	2,009,826
Kansas	12	11	801,293	956,050	1,117,277	1,261,242	1,454,087	1,659,662	1,794,268	1,905,342	2,046,542
Kentucky	12	9	1,026,334	1,405,043	1,456,705	1,812,657	2,189,345	2,507,816	2,662,278	2,820,938	2,966,195
Louisiana	9	8	1,306,457	1,920,740	2,190,613	2,470,146	2,834,716	2,942,463	3,191,583	3,355,503	3,492,358
Maine	6	14	359,786	427,313	466,896	568,159	662,623	710,985	746,141	786,811	844,537
Maryland	6	6	2,298,651	2,614,216	2,913,943	3,319,605	3,900,172	3,967,969	4,239,259	4,470,542	4,691,026
Massachusetts	5	6	2,649,130	2,996,816	3,375,726	3,741,975	4,042,592	4,487,601	4,727,742	4,916,500	5,128,860
Michigan	11	8	3,551,719	4,238,399	4,674,980	5,114,259	5,766,616	6,229,949	6,603,942	6,862,582	7,093,721
Minnesota	8	10	1,851,430	2,153,857	2,415,033	2,677,472	2,973,126	3,132,453	3,379,832	3,542,865	3,701,515
Mississippi	9	9	786,577	1,048,061	1,112,765	1,324,160	1,517,702	1,631,331	1,821,087	1,923,365	2,029,916
Missouri	12	9	1,767,411	2,106,599	2,289,831	2,691,255	3,109,167	3,595,157	3,853,072	4,067,585	4,322,458
Montana	7	5	*	279,349	315,512	373,947	*	466,022	525,003	575,034	619,620
Nebraska	9	5	659,380	791,799	867,810	937,184	1,045,810	1,070,550	1,160,062	1,198,714	1,272,067
Nevada	8	8	684,752	842,155	984,486	1,216,838	1,463,370	1,604,713	1,777,387	1,883,273	1,990,215
New Hampshire	6	10	387,264	492,390	525,689	648,788	727,985	790,639	849,344	896,661	943,330
New Jersey	4	5	3,575,130	4,283,643	4,587,640	5,799,417	7,388,722	6,233,984	6,616,560	6,953,528	7,207,018
New Mexico	10	9	443,343	660,849	780,855	859,408	987,813	1,024,852	1,170,186	1,252,770	1,333,210
New York	10	7	5,918,136	7,429,249	8,937,683	9,453,613	10,834,741	12,995,534	13,804,502	14,573,548	15,261,760
North Carolina	14	7	3,105,811	3,767,598	4,094,715	4,554,723	5,363,630	5,503,202	5,791,947	6,209,483	6,626,582
North Dakota	6	4	*	*	*	*	*	367,850	431,675	456,806	472,799
Northern Mariana Isl.	*	*	*	*	*	*	*	*	*	*	*
Ohio	12	9	4,150,498	4,739,795	5,212,204	5,817,211	6,627,910	6,993,803	7,503,673	7,939,126	8,380,138
Oklahoma	15	8	1,124,214	1,288,357	1,440,970	1,614,191	1,760,122	2,001,835	2,188,590	2,317,197	2,479,877
Oregon	11	9	1,201,207	1,399,279	1,682,343	1,778,936	2,029,224	2,055,890	2,339,414	2,484,176	2,655,905
Pennsylvania	10	9	4,129,186	4,849,085	5,258,844	6,073,573	7,037,296	7,397,397	7,942,340	8,348,713	8,831,238
Puerto Rico	6	1	757,613	1,128,736	1,516,808	1,631,266	2,076,698	2,002,851	2,110,798	2,170,540	2,301,275
Rhode Island	4	9	355,889	456,059	515,547	567,331	607,489	689,209	749,091	765,355	797,603
South Carolina	12	8	1,392,586	1,752,457	1,896,369	2,149,480	2,369,252	2,606,827	2,783,511	3,000,861	3,208,504
South Dakota	7	4	*	278,646	325,114	365,211	428,513	433,927	481,404	513,850	547,812
Tennessee	12	8	1,985,851	2,510,978	2,674,566	2,974,512	3,531,286	4,065,964	4,417,140	4,730,704	5,126,510
Texas	30	6	7,548,537	9,156,187	10,133,280	11,327,700	13,092,007	14,424,253	15,644,066	16,927,880	17,822,230
Utah	10	7	750,244	919,002	1,052,522	1,154,992	1,345,205	1,413,756	1,529,501	1,649,265	1,774,755
Vermont	4	15	*	*	*	*	*	294,984	314,325	333,551	358,052
Virgin Islands	*	*	0	*	*	*	*	*	*	*	*
Virginia	8	7	2,708,342	3,270,165	3,753,106	4,147,182	4,240,462	4,851,206	5,072,921	5,325,173	5,607,350
Washington	10	9	2,286,082	2,706,030	2,869,784	3,377,193	3,770,602	4,062,372	4,249,357	4,494,964	4,799,143
West Virginia	9	14	392,384	498,811	576,503	675,257	761,658	820,838	858,310	964,649	1,040,224
Wisconsin	11	8	1,698,520	2,229,389	2,396,562	2,723,985	2,997,029	3,200,301	3,366,332	3,517,283	3,509,528
Wyoming	8	7	*	194,665	191,939	295,706	302,203	315,347	342,008	358,668	387,164
Nationwide	166	7 %	101,043,219	123,990,857	138,878,293	157,042,082	181,105,135	192,053,067	203,667,474	217,418,404	229,619,397

\* Data withheld to maintain firm confidentiality. Some data have been revised.

<sup>1</sup> For data through December 2004, only facilities-based wireless carriers with at least 10,000 mobile telephony subscribers per state were required to report data, and they were instructed to use billing addresses to determine subscriber counts by state. Starting with the June 2005 data, all facilities-based wireless carriers are required to report, and to use the area codes of telephone numbers provided to subscribers to determine subscriber counts by state.

<sup>2</sup> Percentage of mobile wireless subscribers receiving their service from a mobile wireless reseller.

**Table 15**  
**Percentage of Zip Codes with Competitive Local Exchange Carriers (CLECs)**

Number of CLECs	2000	2001	2002	2003	2004	2005		2006	
	Dec	Dec	Dec	Dec	Dec	Jun	Dec	Jun	Dec
Zero	44.0 %	38.0 %	31.3 %	25.1 %	21.9 %	17.4 %	18.4 %	17.7 %	17.7 %
One	16.8	16.8	19.3	17.3	15.3	10.5	11.4	11.3	11.1
Two	10.4	10.0	10.4	10.4	11.6	7.6	7.6	7.8	8.2
Three	7.2	7.7	6.7	7.0	7.6	6.0	6.2	6.2	6.7
Four	5.5	6.1	6.3	5.3	5.7	4.8	4.7	5.0	5.2
Five	4.0	4.5	5.2	4.8	5.2	4.2	4.1	4.2	4.4
Six	3.0	3.8	4.4	4.7	4.4	3.4	3.6	3.5	3.8
Seven	2.3	2.9	3.5	4.1	4.2	3.1	3.3	3.2	3.2
Eight	1.7	2.2	2.9	3.7	3.7	3.1	2.9	2.9	3.0
Nine	1.4	2.1	2.6	3.2	3.2	2.8	2.7	2.8	2.7
Ten or More	3.7	5.9	7.3	14.4	17.3	36.9	35.0	35.3	34.0

**Table 16**  
**Percentage of Households in Zip Codes with Competitive Local Exchange Carriers**

Number of CLECs	2000	2001	2002	2003	2004	2005		2006	
	Dec	Dec	Dec	Dec	Dec	Jun	Dec	Jun	Dec
Zero	11.8 %	8.8 %	5.8 %	3.8 %	3.1 %	2.2 %	2.4 %	2.3 %	2.4 %
One	10.6	8.5	8.2	6.0	4.6	2.1	2.3	2.4	2.5
Two	10.6	9.7	8.3	5.7	5.8	2.3	2.2	2.1	2.2
Three	11.6	10.8	7.0	5.7	4.7	2.2	2.3	2.2	2.4
Four	11.3	9.7	8.3	5.5	4.9	2.2	2.1	2.3	2.4
Five	9.3	8.8	8.4	5.7	6.1	2.2	2.2	2.0	2.4
Six	7.2	8.0	8.4	6.9	5.8	1.9	2.2	1.9	2.4
Seven	6.1	6.7	7.6	6.7	6.6	2.0	2.4	2.2	2.4
Eight	4.9	5.3	7.0	7.4	6.6	2.6	2.5	2.3	2.5
Nine	4.2	5.3	7.0	7.0	6.3	2.4	2.7	2.7	2.5
Ten or More	12.2	18.3	23.9	39.5	45.3	77.9	76.8	77.4	76.1

Demographic data are from Demographic Power Pack, Current Year Update (2000), MapInfo Corporation. Only LECs with at least 10,000 lines in a state were required to report through December 2004. Beginning with the June 2005 data all LECs are required to report. Figures may not add to 100% due to rounding.

**Table 17**  
**Percentage of Zip Codes with Competitive Local Exchange Carriers as of December 31, 2006**

State	Number of CLECs								
	Zero	One - Three	Four	Five	Six	Seven	Eight	Nine	Ten or More
Alabama	9 %	28 %	6 %	7 %	4 %	5 %	2 %	3 %	36 %
Alaska	84	16	0	0	0	0	0	0	0
Arizona	11	18	7	4	6	2	4	5	43
Arkansas	27	39	8	5	3	2	2	1	12
California	8	14	4	4	3	3	3	2	59
Colorado	23	21	4	4	5	3	4	3	33
Connecticut	3	41	7	8	8	10	7	6	9
Delaware	2	5	3	3	5	3	0	9	69
District of Columbia	0	12	0	0	0	0	0	0	88
Florida	1	8	3	3	2	3	2	3	76
Georgia	11	23	5	4	3	2	2	2	46
Hawaii	9	69	20	2	0	0	0	0	0
Idaho	34	38	5	4	3	3	2	2	7
Illinois	19	36	4	2	3	2	2	1	31
Indiana	12	28	8	7	4	3	4	3	31
Iowa	37	44	3	3	2	2	3	2	5
Kansas	31	28	5	6	4	4	3	3	16
Kentucky	13	36	7	6	6	4	3	3	21
Louisiana	7	28	5	2	6	3	3	3	43
Maine	14	54	8	6	5	5	2	1	5
Maryland	0	10	5	4	3	4	6	5	62
Massachusetts	1	7	3	3	3	4	4	5	71
Michigan	7	17	6	5	6	4	4	4	47
Minnesota	29	31	7	4	2	2	2	3	21
Mississippi	5	20	7	7	7	4	6	4	39
Missouri	34	26	4	5	4	2	2	2	21
Montana	64	20	4	3	3	1	1	1	2
Nebraska	59	23	4	4	2	1	1	2	4
Nevada	22	24	6	5	6	4	6	1	26
New Hampshire	4	28	11	8	7	8	8	6	20
New Jersey	0	5	2	2	1	2	2	4	83
New Mexico	40	30	4	4	2	6	4	2	9
New York	5	15	6	4	4	4	3	3	55
North Carolina	8	26	6	9	4	4	5	4	34
North Dakota	72	20	1	2	0	0	1	0	2
Ohio	3	27	8	7	8	5	4	3	34
Oklahoma	32	24	2	4	3	2	2	3	28
Oregon	24	33	3	3	4	3	3	3	24
Pennsylvania	9	30	5	4	4	3	4	3	38
Puerto Rico	3	97	0	0	0	0	0	0	0
Rhode Island	0	12	12	5	11	4	5	5	45
South Carolina	11	22	5	6	4	4	5	4	40
South Dakota	59	31	2	2	2	2	1	0	1
Tennessee	14	18	5	3	5	5	3	4	44
Texas	14	20	5	4	3	2	3	2	48
Utah	26	25	5	6	1	3	2	4	28
Vermont	13	39	14	7	9	7	5	3	2
Virginia	12	30	8	7	4	4	3	2	30
Washington	17	31	4	3	4	4	4	3	31
West Virginia	20	45	10	6	5	3	3	3	6
Wisconsin	30	34	3	3	2	3	1	1	22
Wyoming	32	46	5	3	3	4	4	4	1
Nationwide	18 %	26 %	5 %	4 %	4 %	3 %	3 %	3 %	34 %

**Table 18**  
**CLEC-Owned End-User Switched Access Lines Served by Reporting Competitive Local Exchange Carriers**  
(In Thousands)

State	2000		2001		2002		2003		2004		2005		2006	
	Jun	Dec	Jun	Dec	Jun	Dec	Jun	Dec	Jun	Dec	Jun	Dec	Jun	Dec
Alabama	22	39	40	18	6	50	68	76	76	89	70	72	76	87
Alaska	*	*	*	*	*	*	*	*	*	*	*	*	*	*
American Samoa	0	0	0	0	0	0	0	0	0	0	0	0	0	0
Arizona	94	50	132	164	194	211	279	351	409	440	511	645	651	692
Arkansas	*	*	*	*	*	49	*	46	46	46	68	68	74	87
California	573	674	762	910	890	891	888	1,025	1,042	1,050	1,204	1,280	1,207	1,363
Colorado	99	117	151	172	183	207	200	163	155	155	161	273	193	148
Connecticut	78	73	78	91	97	105	104	104	111	122	136	113	125	130
Delaware	*	*	0	0	*	*	*	*	*	*	2	3	6	6
District of Columbia	34	52	70	80	74	67	69	71	72	81	110	61	49	51
Florida	266	319	372	260	302	344	309	331	364	418	320	434	332	304
Georgia	149	191	184	167	161	197	192	180	182	254	201	152	213	218
Guam	0	0	0	0	0	0	0	0	0	0	0	0	0	0
Hawaii	*	0	*	*	*	*	*	*	*	*	15	25	36	41
Idaho	0	*	*	*	*	*	*	*	*	*	12	24	27	18
Illinois	184	325	416	467	477	446	403	392	400	488	474	415	448	403
Indiana	48	70	59	76	76	72	69	79	91	92	94	90	112	114
Iowa	18	25	21	33	34	37	40	38	40	42	59	71	94	107
Kansas	14	11	18	25	26	46	56	64	76	102	135	133	172	217
Kentucky	*	42	*	*	*	50	28	79	83	91	95	34	131	143
Louisiana	16	15	24	21	24	38	53	77	93	100	160	153	178	191
Maine	*	*	*	*	*	*	2	2	20	27	47	52	48	45
Maryland	63	65	83	30	30	24	28	94	116	155	78	60	69	48
Massachusetts	154	229	277	317	310	366	363	375	390	420	428	394	406	378
Michigan	142	218	113	113	121	104	85	108	106	160	235	102	129	149
Minnesota	37	59	61	80	114	153	163	167	169	182	203	243	272	233
Mississippi	*	19	11	6	*	*	3	4	5	8	19	19	27	20
Missouri	73	75	51	37	50	70	54	50	55	89	129	142	207	211
Montana	*	*	*	*	*	*	13	14	15	16	20	30	39	50
Nebraska	*	*	*	91	103	115	125	130	135	142	168	181	184	192
Nevada	*	*	37	*	*	35	28	33	30	32	35	38	94	98
New Hampshire	*	25	29	43	45	59	60	63	65	76	84	80	71	60
New Jersey	92	120	95	71	88	88	89	92	105	156	144	177	118	145
New Mexico	*	*	*	*	*	*	*	*	15	15	15	11	23	25
New York	420	546	579	682	608	432	402	374	418	449	591	879	987	1,061
North Carolina	82	88	111	70	75	77	96	74	101	156	188	238	233	370
North Dakota	*	*	*	*	*	*	*	6	8	8	12	16	17	16
Northern Mariana Isl.	0	0	0	0	0	0	0	0	0	0	0	0	0	0
Ohio	82	132	135	144	153	83	69	85	108	137	233	438	489	503
Oklahoma	*	71	77	89	115	114	111	174	138	178	188	205	238	265
Oregon	16	48	60	31	36	45	39	38	35	41	42	63	54	51
Pennsylvania	269	386	458	512	553	538	494	554	573	654	*	643	498	421
Puerto Rico	*	*	*	*	*	*	*	*	*	*	*	*	*	*
Rhode Island	*	*	45	62	76	90	100	116	131	151	171	*	*	*
South Carolina	*	49	26	7	7	20	25	25	28	38	56	73	112	138
South Dakota	*	*	*	*	*	*	26	35	*	*	25	79	79	63
Tennessee	103	109	117	92	56	103	95	90	94	124	92	146	157	155
Texas	300	367	418	414	406	426	430	436	462	590	659	677	771	881
Utah	44	73	77	72	80	91	80	73	68	76	62	86	96	63
Vermont	*	*	*	*	*	*	*	*	*	*	*	11	15	*
Virgin Islands	0	0	0	0	0	0	0	0	0	0	*	*	*	0
Virginia	119	132	179	203	221	275	285	438	492	494	373	430	460	456
Washington	56	97	115	156	161	178	155	144	149	147	157	178	165	144
West Virginia	*	*	*	*	*	*	*	*	*	6	9	10	10	13
Wisconsin	40	50	54	51	56	46	45	47	58	37	284	139	190	234
Wyoming	*	*	*	*	*	*	*	*	*	*	2	9	17	24
Total	4,042	5,217	5,776	6,072	6,236	6,479	6,370	7,045	7,483	8,503	9,124	10,163	10,699	11,169

\* Data withheld to maintain firm confidentiality. Some data for June 2006 have been revised.

Only LECs with at least 10,000 lines in a state were required to report through December 2004. Beginning with the June 2005 data all LECs are required to report.

**Table 19**  
**UNEs Acquired from Other Carriers**  
(In Thousands)

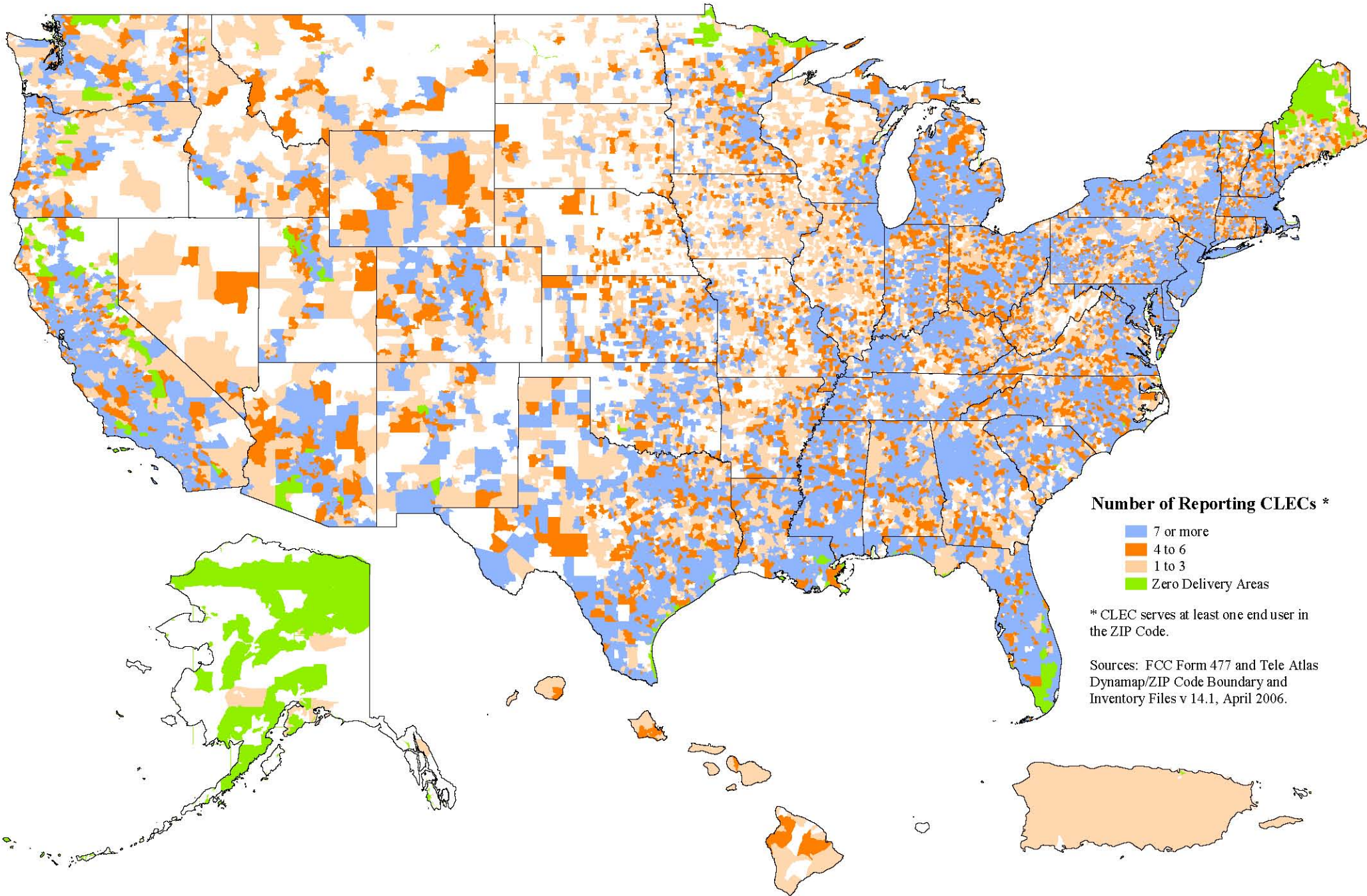
State	2000		2001		2002		2003		2004		2005		2006	
	Jun	Dec	Jun	Dec	Jun	Dec	Jun	Dec	Jun	Dec	Jun	Dec	Jun	Dec
Alabama	31	46	52	*	89	140	173	137	207	201	217	192	211	189
Alaska	*	*	*	*	*	*	*	*	*	*	*	*	*	*
American Samoa	0	0	0	0	0	0	0	0	0	0	0	0	0	0
Arizona	16	19	54	68	80	78	123	234	268	228	171	161	167	169
Arkansas	*	*	*	*	*	94	*	*	110	98	100	77	84	76
California	240	309	575	603	746	1,281	1,555	1,852	2,148	2,245	1,999	1,189	960	906
Colorado	22	99	140	148	161	154	187	222	234	199	243	223	243	204
Connecticut	*	*	*	7	18	42	47	68	93	101	110	92	86	83
Delaware	*	*	0	0	*	*	47	34	52	52	101	74	60	60
District of Columbia	*	13	34	10	42	47	60	63	82	62	74	62	40	42
Florida	113	186	252	377	482	849	852	871	1,020	1,037	933	936	782	704
Georgia	92	182	202	326	418	455	536	555	642	566	559	491	482	381
Guam	0	0	0	0	0	0	0	0	0	0	0	0	0	0
Hawaii	*	0	*	*	*	*	*	*	*	*	4	5	5	5
Idaho	0	*	*	*	*	*	*	*	26	25	51	38	38	41
Illinois	163	219	435	568	734	933	1,024	1,119	1,121	1,016	955	643	614	580
Indiana	31	56	66	79	122	158	228	326	357	328	332	228	200	182
Iowa	*	136	*	140	138	144	137	135	144	138	114	105	93	82
Kansas	21	33	43	103	132	190	206	201	215	208	202	150	146	139
Kentucky	*	*	*	*	*	26	51	66	112	103	136	119	127	115
Louisiana	14	22	52	42	46	94	120	110	156	170	220	144	164	150
Maine	*	*	*	*	*	*	*	46	63	68	84	67	45	46
Maryland	11	29	50	58	119	174	264	362	390	431	514	336	253	255
Massachusetts	14	49	88	117	102	161	260	391	416	429	460	340	270	269
Michigan	107	65	240	628	986	1,154	1,208	1,360	1,388	1,310	1,163	915	829	700
Minnesota	71	159	219	223	242	308	260	293	310	295	306	348	281	266
Mississippi	*	14	15	16	18	61	82	72	98	80	118	99	102	90
Missouri	30	37	61	110	157	204	217	240	322	260	282	208	181	175
Montana	*	*	*	*	*	*	4	*	*	5	16	15	14	13
Nebraska	*	*	*	29	30	33	37	41	43	41	21	19	17	*
Nevada	*	*	107	*	*	92	76	87	66	65	122	114	123	97
New Hampshire	*	2	12	14	23	46	57	63	81	83	97	80	75	76
New Jersey	25	51	82	93	110	415	682	925	987	997	1,015	499	312	311
New Mexico	*	*	*	*	*	*	*	*	47	47	30	23	30	21
New York	1,114	1,607	1,929	2,084	2,044	2,147	2,366	2,652	2,554	2,495	2,455	1,482	931	847
North Carolina	29	70	97	118	140	191	228	246	334	315	251	304	300	297
North Dakota	*	*	*	*	*	*	*	17	*	12	43	45	45	46
Northern Mariana Isl.	0	0	0	0	0	0	0	0	0	0	0	0	0	0
Ohio	67	101	103	121	278	469	584	736	759	662	652	449	405	372
Oklahoma	*	10	27	30	45	72	82	69	81	84	113	115	119	118
Oregon	3	11	31	75	75	99	93	166	191	219	164	264	202	218
Pennsylvania	130	292	494	516	589	612	666	776	899	907	1,100	878	693	665
Puerto Rico	*	*	*	*	*	*	*	*	*	*	*	*	*	*
Rhode Island	*	*	13	26	19	44	54	59	71	66	72	53	47	43
South Carolina	*	25	49	*	66	98	127	114	133	151	179	169	173	166
South Dakota	*	*	*	*	*	*	20	29	*	*	71	52	26	24
Tennessee	60	73	115	128	130	153	180	216	316	261	287	255	295	250
Texas	437	1,101	1,186	1,440	1,542	1,468	1,548	1,546	1,596	1,387	1,376	1,030	963	865
Utah	22	34	46	48	39	49	79	97	141	131	157	122	134	135
Vermont	*	*	*	*	*	*	*	*	*	*	30	25	19	25
Virgin Islands	0	0	0	0	0	0	0	0	0	0	*	*	*	0
Virginia	46	81	146	272	244	288	377	354	415	421	559	396	305	319
Washington	25	46	59	94	114	118	118	183	256	240	259	249	251	246
West Virginia	*	*	*	*	*	*	*	*	*	89	94	76	77	78
Wisconsin	82	108	160	209	273	352	420	499	515	506	306	430	404	387
Wyoming	*	*	*	*	*	*	*	*	*	*	26	22	19	17
<b>Total</b>	<b>3,201</b>	<b>5,540</b>	<b>7,580</b>	<b>9,332</b>	<b>10,930</b>	<b>13,709</b>	<b>15,728</b>	<b>17,888</b>	<b>19,624</b>	<b>18,961</b>	<b>19,025</b>	<b>14,521</b>	<b>12,547</b>	<b>11,669</b>

\* Data withheld to maintain firm confidentiality. Some data for June 2006 have been revised.

Only LECs with at least 10,000 lines in a state were required to report through December 2004. Beginning with the June 2005 data all LECs are required to report.

# Reporting CLECs by 5-Digit Geographical ZIP Code

(As of December 31, 2006)



# Customer Response

Publication: *Local Telephone Competition: Status as of December 31, 2006*

You can help us provide the best possible information to the public by completing this form and returning it to the Industry Analysis and Technology Division of the FCC's Wireline Competition Bureau.

1. Please check the category that best describes you:

- press
- current telecommunications carrier
- potential telecommunications carrier
- business customer evaluating vendors/service options
- consultant, law firm, lobbyist
- other business customer
- academic/student
- residential customer
- FCC employee
- other federal government employee
- state or local government employee
- Other (please specify)

2. Please rate the report:      Excellent      Good      Satisfactory      Poor      No opinion

- |                      |                          |                          |                          |                          |                          |
|----------------------|--------------------------|--------------------------|--------------------------|--------------------------|--------------------------|
| Data accuracy        | <input type="checkbox"/> | <input type="checkbox"/> | <input type="checkbox"/> | <input type="checkbox"/> | <input type="checkbox"/> |
| Data presentation    | <input type="checkbox"/> | <input type="checkbox"/> | <input type="checkbox"/> | <input type="checkbox"/> | <input type="checkbox"/> |
| Timeliness of data   | <input type="checkbox"/> | <input type="checkbox"/> | <input type="checkbox"/> | <input type="checkbox"/> | <input type="checkbox"/> |
| Completeness of data | <input type="checkbox"/> | <input type="checkbox"/> | <input type="checkbox"/> | <input type="checkbox"/> | <input type="checkbox"/> |
| Text clarity         | <input type="checkbox"/> | <input type="checkbox"/> | <input type="checkbox"/> | <input type="checkbox"/> | <input type="checkbox"/> |
| Completeness of text | <input type="checkbox"/> | <input type="checkbox"/> | <input type="checkbox"/> | <input type="checkbox"/> | <input type="checkbox"/> |

3. Overall, how do you rate this report?      Excellent      Good      Satisfactory      Poor      No opinion

- |                          |                          |                          |                          |                          |
|--------------------------|--------------------------|--------------------------|--------------------------|--------------------------|
| <input type="checkbox"/> | <input type="checkbox"/> | <input type="checkbox"/> | <input type="checkbox"/> | <input type="checkbox"/> |
|--------------------------|--------------------------|--------------------------|--------------------------|--------------------------|

4. How can this report be improved?

5. May we contact you to discuss possible improvements?

Name:

Telephone #:

To discuss the information in this report, contact: 202-418-0940 or for users of TTY equipment, call 202-418-0484		
Fax this response to	or	Mail this response to
202-418-0520		FCC/WCB/IATD Mail Stop 1600 F Washington, DC 20554