

Local Telephone Competition: Status as of June 30, 2007

Industry Analysis and Technology Division
Wireline Competition Bureau
March 2008



This report is available for reference in the FCC's Reference Information Center, Courtyard Level, 445 12th Street, SW, Washington, DC. Copies may be purchased by contacting Best Copy and Printing, Inc., 445 12th Street, SW, Room CY-B402, Washington, DC 20554, telephone (800) 378-3160, or via their website at www.bcpiweb.com. The report can also be downloaded from the Wireline Competition Bureau Statistical Reports Internet site at www.fcc.gov/wcb/stats.

Local Telephone Competition: Status as of June 30, 2007

We present here summary statistics of the latest data on local telephone service competition in the United States as reported in the Commission's local competition and broadband data gathering program (FCC Form 477).¹ The summary statistics provide a snapshot of local telephone service competition based on switched access lines in service and state-specific mobile telephony service subscribers as of June 30, 2007.²

Twice a year, all incumbent local exchanges carriers (incumbent LECs) and competitive local exchange carriers (CLECs) are required to report to the Commission basic information about their local telephone service, and all facilities-based mobile telephony providers are required to provide information about their subscribers. Prior to June 2005, the FCC collected data from carriers with at least 10,000 switched access lines, or mobile telephony subscribers, in service in a particular state. Small carriers, many of whom serve rural areas with relatively small populations, were therefore underrepresented in the earlier data.³ With the inclusion of these carriers, the number of incumbent LEC and CLEC holding companies and unaffiliated carriers reporting local telephone service information as of December 31, 2005 tripled, and the number of reporting facilities-based mobile telephony providers doubled.⁴

Based on the latest information now available, we summarize the following observations:

- End-user customers obtained local telephone service by utilizing approximately 134.5 million incumbent LEC switched access lines, 28.7 million CLEC switched access lines, and 238.2 million mobile telephony service subscriptions at the end of June 2007.⁵ See Tables 1 and 14.

¹ *Local Competition and Broadband Reporting*, CC Docket No. 99-301, Report and Order, 15 FCC Rcd 7717 (2000); *Local Telephone Competition and Broadband Reporting*, WC Docket No. 04-141, Report and Order, 19 FCC Rcd 22340 (2004). During this data gathering program, qualifying providers file FCC Form 477 each year on March 1 (reporting data for the preceding December 31) and September 1 (reporting data for June 30 of the same year). An updated FCC Form 477, and instructions for that particular form, for each specific round of the data collection may be downloaded from the FCC Forms website at www.fcc.gov/formpage.html.

² Statistical summaries of the earlier Form 477 data collections appeared in previous releases of the *Local Telephone Competition* report, available at www.fcc.gov/wcb/iatd/comp.html.

³ As of December 31, 2005, filers with fewer than 10,000 switched access lines in a state (including entities that previously filed on a voluntary basis) reported about 4.5 million lines (about 2.0 million incumbent LEC lines and about 2.5 million CLEC lines). By contrast, the data filed for December 2004 included about 0.6 million lines filed on a voluntary basis (about 0.2 million incumbent LEC lines and about 0.4 million CLEC lines). Mobile telephony service providers with fewer than 10,000 subscribers in a state reported about 364,000 subscribers as of December 31, 2005. Such filers reported (on a voluntary basis) about 69,000 subscribers a year earlier.

⁴ The nationwide number of CLEC holding companies and unaffiliated entities reporting local telephone service information increased from 149 to 382, and the number of incumbent LEC entities increased from 190 to 807. See Tables 3 and 4. The number of entities reporting mobile telephony subscribers increased from 76 to 155.

⁵ For this report, end-user switched access lines reported for the incumbent LEC operations of certain entities (i.e., AT&T Inc. and Verizon Communications Inc.) have been increased to reflect merger with a CLEC – to the extent (continued....)

- CLECs reported 28.7 million (or 17.6%) of the approximately 163.2 million nationwide end-user switched access lines in service at the end of June 2007, compared to 28.6 million (or 17.1%) of the 167.5 million lines reported six months earlier. See Table 1.
- About 42% of switched access lines in service to CLEC end users served residential customers at the end of June 2007, whereas about 64% of switched access lines in service to incumbent LEC end users served residential customers. See Table 2.
- CLECs reported providing 38% of their end-user switched access lines over their own local loop facilities,⁶ 40% by using unbundled network elements (UNEs) they leased from other carriers, and 22% through resale arrangements with unaffiliated carriers.⁷ See Table 3.
- Incumbent LECs reported providing about 12% fewer UNE loops with switching (referred to as the UNE-Platform) to unaffiliated carriers at the end of June 2007 than they reported six months earlier (6.2 million compared to 7.1 million) and about 3% fewer UNE loops without switching (4.3 million compared to 4.4 million). See Table 4.
- About 7.7 million end-user switched access lines were provided by CLECs over coaxial cable connections. These lines represent about 70% of the 11.0 million end-user switched access lines that CLECs reported providing over their own local loop facilities, about 27% of all end-user switched access lines that CLECs reported, about 64% of CLEC lines to residential end users, about 5% of total end-user switched access lines, and about 8% of total residential switched access lines. See Tables 2, 3, and 5.
- Incumbent LECs were the presubscribed interstate long distance carrier for 59% of the switched access lines they provided to end users, while CLECs were the interstate long distance carrier for 78% of their switched access lines. See Table 6.

(Continued from previous page) _____

the CLEC operated in the incumbent LEC's service territory – and lines reported for the CLEC operations of these entities have been decreased by the same amount. Such adjustments are necessary when the merged entity treats the former CLEC operations as a separate business unit, and files a separate Form 477 for that business unit. SBC Communications, Inc. (SBC) and AT&T Corp. merged to form AT&T Inc. in November 2005, and AT&T Inc. merged with BellSouth on December 29, 2006. Verizon Communications Inc. and MCI, Inc. merged in January 2006.

⁶ Form 477 filers report that end-user switched access lines are provided over their own local loop facilities when the filer (including affiliates) owns the local loop to the end user's premises. Therefore, unbundled network elements (UNEs) or services for resale that a CLEC acquires from an incumbent LEC become own-facilities lines, for purposes of Form 477, if the two entities merge. As previously noted, such lines are treated as incumbent LEC lines in this report, rather than as CLEC lines.

⁷ CLEC "resale" lines should include lines that the CLEC provides by using special access lines or other facilities that it obtains from unaffiliated ILECs or CLECs as tariffed services or under commercial agreements.

- The Commission’s data collection program collates information about CLEC local telephone service lines (and the CLEC share of total local telephone service lines) in individual states. Relatively large numbers of CLEC lines are associated with the more populous states.⁸ With respect to the calculated CLEC share of switched access lines in service, however, some less populous states, such as Nebraska, New Hampshire, Rhode Island, and South Dakota had larger CLEC shares than some more populous states, such as California, Florida, and Illinois. See Tables 7 - 10.⁹
- Among the 50 states, only Alaska and Hawaii had fewer than 10 reporting CLECs. See Table 13.
- Mobile telephony service providers reported 238.2 million subscribers at the end of June 2007, which is 21 million, or 10%, more than a year earlier. About 7% of these subscribers were billed by mobile telephony service resellers.¹⁰ See Table 14.
- There was at least one CLEC serving customers in 82% of the nation’s Zip Codes at the end of June 2007. About 98% of United States households resided in those Zip Codes. Moreover, multiple carriers reported providing local telephone service in the major population centers of the country. See Table 15 - 17, and the map that follows Table 19.

As other information from FCC Form 477 becomes available, it will be routinely posted on the Commission’s Internet site. We invite users of the information presented in this statistical summary to provide suggestions for improved data collection and analysis by:

- Using the attached customer response form,
- E-mailing comments to James.Eisner@fcc.gov,
- Calling the Industry Analysis and Technology Division of the Wireline Competition Bureau at (202) 418-0940, or
- Participating in any formal proceedings undertaken by the Commission to solicit comments for improvement of FCC Form 477.

⁸ The largest numbers of CLEC lines are reported for California (2.9 million lines), New York (2.9 million lines), and Texas (1.9 million lines), the first, third, and second most populous states, respectively.

⁹ CLEC shares appearing in Table 8 are based on CLEC and ILEC lines in Tables 9 and 10.

¹⁰ The mobile “resale” percentage should not include any subscribers that the facilities-based provider serves on a pre-paid basis. For reporting purposes, a “facilities-based” mobile telephony service provider serves subscribers using spectrum licenses that it has obtained or manages.

Table 1
End-User Switched Access Lines Reported

Date	ILEC Lines	CLEC Lines	Total	CLEC Share
Dec 1999	181,202,853	8,194,243	189,397,096	4.3 %
Jun 2000	179,648,725	11,557,381	191,206,106	6.0
Dec 2000	177,561,022	14,871,409	192,432,431	7.7
Jun 2001	174,752,275	17,274,727	192,027,002	9.0
Dec 2001	171,917,359	19,653,441	191,570,800	10.3
Jun 2002	167,330,006	21,644,928	188,974,934	11.5
Dec 2002	164,386,452	24,863,691	189,250,143	13.1
Jun 2003	158,274,538	26,985,345	185,259,883	14.6
Dec 2003	153,157,843	29,775,438	182,933,281	16.3
Jun 2004	147,993,218	32,033,915	180,027,133	17.8
Dec 2004	144,809,899	32,880,812	177,690,711	18.5
Jun 2005	143,757,708	33,975,336	177,733,044	19.1
Dec 2005	143,773,101	31,387,839	175,160,940	17.9
Jun 2006	142,293,047	29,896,109	172,189,156	17.4
Dec 2006	138,833,928	28,625,971	167,459,899	17.1
Jun 2007	134,458,920	28,711,461	163,170,381	17.6

Only LECs with at least 10,000 lines in a state were required to report through December 2004. Beginning with the June 2005 data all LECs are required to report. Some historical data have been revised.

Chart 1
End-User Switched Access Lines Reported
(Lines in Millions)

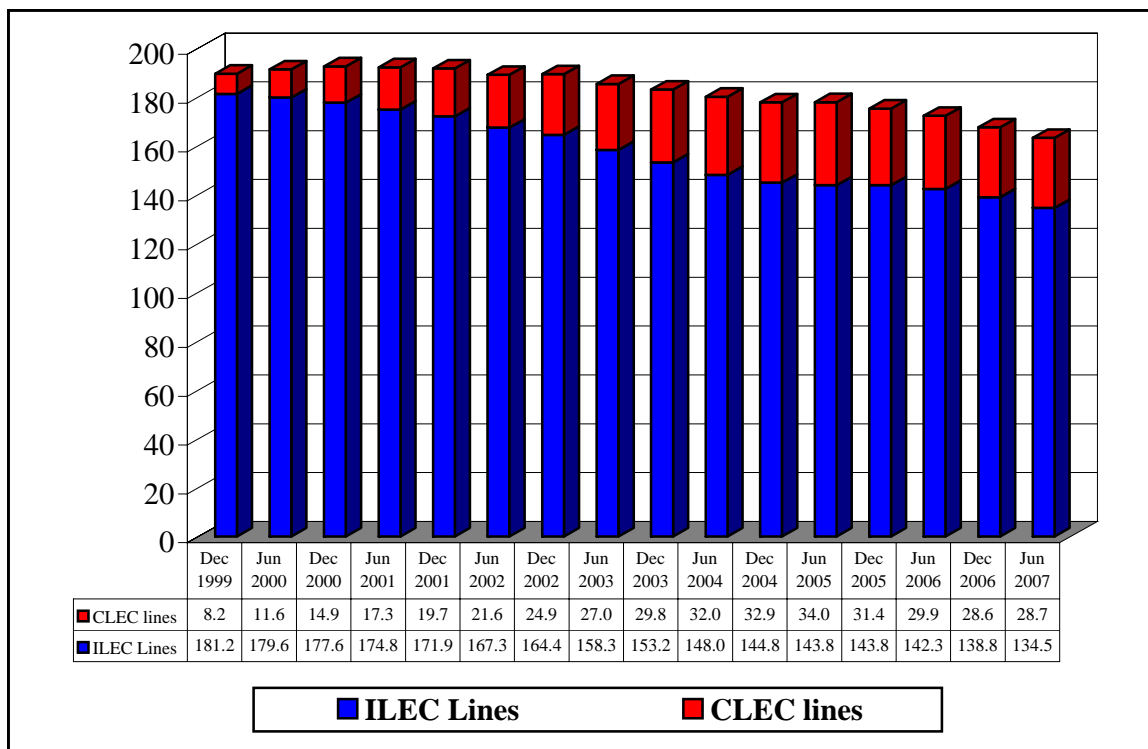


Table 2
End-User Switched Access Lines by Customer Type

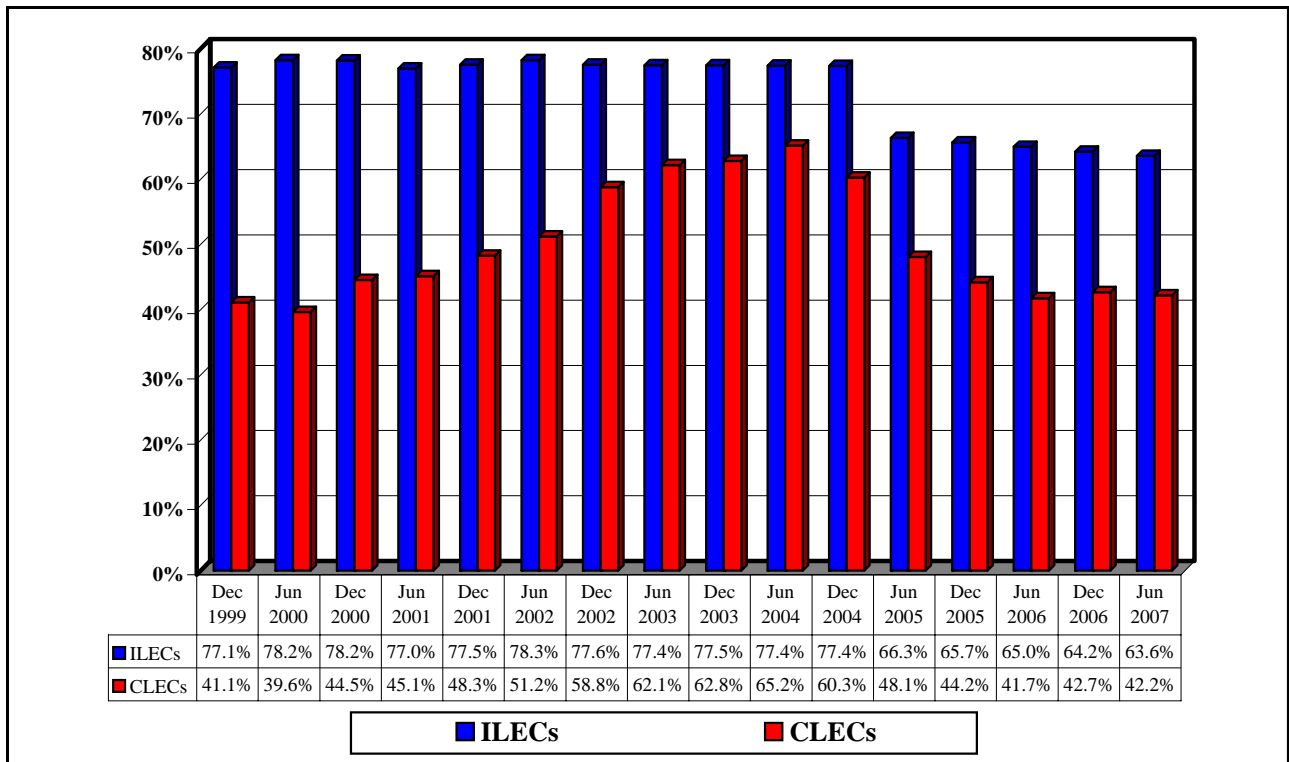
Date	Reporting ILECs			Reporting CLECs		
	Residential ¹	Business ²	% Residential	Residential ¹	Business ²	% Residential
Dec 1999	139,694,481	41,508,372	77.1 %	3,368,702	4,825,541	41.1 %
Jun 2000	140,566,144	39,082,581	78.2	4,579,501	6,977,880	39.6
Dec 2000	138,824,111	38,736,911	78.2	6,620,471	8,250,938	44.5
Jun 2001	134,530,884	40,221,391	77.0	7,793,071	9,481,656	45.1
Dec 2001	133,320,119	38,597,240	77.5	9,489,049	10,164,392	48.3
Jun 2002	130,937,328	36,392,678	78.3	11,080,676	10,564,252	51.2
Dec 2002	127,494,698	36,891,754	77.6	14,608,495	10,255,196	58.8
Jun 2003	122,573,530	35,701,008	77.4	16,770,561	10,214,784	62.1
Dec 2003	118,658,867	34,498,976	77.5	18,702,229	11,073,209	62.8
Jun 2004	114,533,368	33,459,850	77.4	20,871,756	11,162,159	65.2
Dec 2004	112,054,420	32,755,479	77.4	19,811,711	13,069,101	60.3
Jun 2005	95,315,689	48,442,019	66.3	16,338,117	17,637,219	48.1
Dec 2005	94,392,526	49,380,575	65.7	13,873,331	17,514,508	44.2
Jun 2006	92,453,320	49,839,727	65.0	12,474,434	17,421,675	41.7
Dec 2006	89,166,539	49,667,389	64.2	12,210,978	16,414,993	42.7
Jun 2007	85,508,200	48,950,720	63.6	12,105,557	16,605,904	42.2

Only LECs with at least 10,000 lines in a state were required to report through December 2004. Beginning with the June 2005 data all LECs are required to report. Some historical data have been revised.

¹ Included small business lines through December 2004.

² Excluded small business lines through December 2004.

Chart 2
Percent of Lines That Serve Residential Customers ¹



¹ Included small business lines through December 2004.

Table 3
Reporting Competitive Local Exchange Carriers
(End-User Switched Access Lines in Thousands)

Date	CLECs Reporting	Total End-User Lines	Acquired from Other Carriers		CLEC-Owned Lines ²	Percent		
			Resold Lines	UNEs ¹		Resold	UNEs	CLEC-Owned
Dec 1999	81	8,194	3,513	1,959	2,723	42.9%	23.9%	33.2%
Jun 2000	78	11,557	4,315	3,201	4,042	37.3	27.7	35.0
Dec 2000	89	14,871	4,114	5,540	5,217	27.7	37.3	35.1
Jun 2001	91	17,275	3,919	7,580	5,776	22.7	43.9	33.4
Dec 2001	94	19,653	4,250	9,332	6,072	21.6	47.5	30.9
Jun 2002	96	21,645	4,478	10,930	6,236	20.7	50.5	28.8
Dec 2002	112	24,864	4,677	13,709	6,479	18.8	55.1	26.1
Jun 2003	125	26,985	4,887	15,728	6,370	18.1	58.3	23.6
Dec 2003	136	29,775	4,842	17,888	7,045	16.3	60.1	23.7
Jun 2004	137	32,034	4,927	19,624	7,483	15.4	61.3	23.4
Dec 2004	149	32,881	5,417	18,961	8,503	16.5	57.7	25.9
Jun 2005	326	33,975	5,826	19,025	9,124	17.1	56.0	26.9
Dec 2005	382	31,388	6,704	14,521	10,163	21.4	46.3	32.4
Jun 2006	400	29,896	6,548	12,547	10,802	21.9	42.0	36.1
Dec 2006	397	28,626	5,819	11,663	11,144	20.3	40.7	38.9
Jun 2007	398	28,711	6,184	11,505	11,023	21.5	40.1	38.4

Only LECs with at least 10,000 lines in a state were required to report through December 2004. Beginning with the June 2005 data all LECs are required to report. Figures may not add to totals due to rounding. Some historical data have been revised.

¹ Includes unbundled network element (UNE) loops leased from an unaffiliated carrier on a stand-alone basis and also UNE loops leased in combination with UNE switching or any other unbundled network element.

² Lines provided over CLEC-owned "last-mile" facilities.

Chart 3
Competitive Local Exchange Carriers' End-User Lines

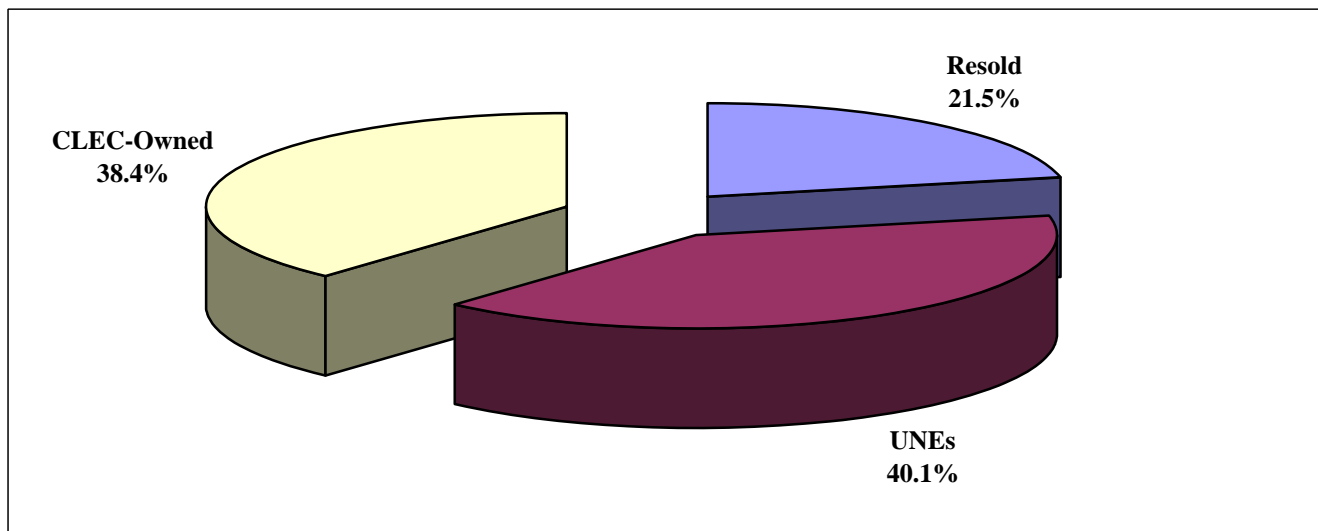


Table 4
Reporting Incumbent Local Exchange Carriers
(Switched Access Lines in Thousands)

Date ¹	ILECs Reporting	Total Lines	End-User Lines	Provided to Other Carriers					
				Resold Lines	UNEs		Total UNEs & Resold Lines	Percent of Total Lines	
					Without Switching	With Switching			Total UNEs
Dec 1997	9	159,008	157,132	1,743			133	1,876	1.2 %
Jun 1998	8	161,810	159,118	2,448			244	2,692	1.7
Dec 1998	7	164,614	161,191	3,062			361	3,423	2.1
Jun 1999	7	167,177	162,909	3,583			685	4,268	2.6
Dec 1999	168	187,190	181,203	4,494	1,004	489	1,493	5,987	3.2
Jun 2000	159	188,058	179,649	5,098	1,696	1,616	3,312	8,409	4.5
Dec 2000	166	188,223	177,561	5,388	2,436	2,838	5,274	10,662	5.7
Jun 2001	156	187,092	174,752	4,417	3,161	4,761	7,922	12,340	6.6
Dec 2001	164	185,391	171,917	4,014	3,679	5,781	9,460	13,474	7.3
Jun 2002	166	182,345	167,330	3,475	4,061	7,478	11,540	15,015	8.2
Dec 2002	174	181,616	164,386	2,743	4,259	10,227	14,487	17,229	9.5
Jun 2003	181	177,770	158,275	2,232	4,227	13,036	17,263	19,495	11.0
Dec 2003	185	174,453	153,158	1,833	4,287	15,176	19,463	21,296	12.2
Jun 2004	185	171,050	147,993	1,600	4,322	17,136	21,458	23,057	13.5
Dec 2004	190	167,063	144,810	1,490	4,217	16,546	20,763	22,253	13.3
Jun 2005	757	164,449	143,758	1,796	4,300	14,596	18,895	20,691	12.6
Dec 2005	807	160,881	143,773	1,793	4,469	10,846	15,315	17,108	10.6
Jun 2006	805	156,872	142,293	1,723	4,413	8,443	12,856	14,579	9.3
Dec 2006	814	151,958	138,834	1,613	4,408	7,103	11,511	13,124	8.6
Jun 2007	814	146,491	134,459	1,517	4,285	6,230	10,515	12,032	8.2

Figures may not add to totals due to rounding. Some data for December 2006 have been revised.

¹ Data prior to December 1999 are from Common Carrier Bureau voluntary surveys. Only LECs with at least 10,000 lines in a state were required to report data for December 1999 through December 2004, after which all LECs are required to report.

Chart 4
ILEC Lines and the Percent Provided to Other Carriers

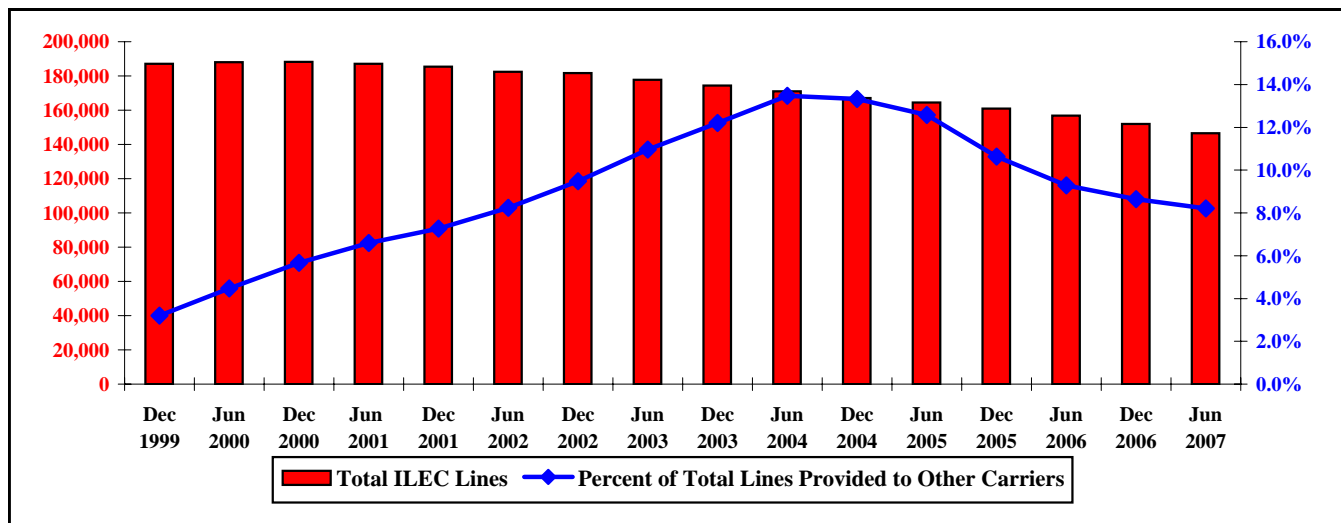


Table 5
Competitive Local Exchange Carrier Lines by Type of Technology
(End-User Switched Access Lines in Thousands)

Date	Coaxial Cable	Other Technologies	Total	Percent Coaxial Cable
Dec 1999	308	7,886	8,194	3.8 %
Jun 2000	614	10,943	11,557	5.3
Dec 2000	1,125	13,746	14,871	7.6
Jun 2001	1,876	15,399	17,275	10.9
Dec 2001	2,246	17,408	19,653	11.4
Jun 2002	2,597	19,048	21,645	12.0
Dec 2002	3,071	21,793	24,864	12.4
Jun 2003	3,123	23,863	26,985	11.6
Dec 2003	3,301	26,474	29,775	11.1
Jun 2004	3,338	28,696	32,034	10.4
Dec 2004	3,706	29,174	32,881	11.3
Jun 2005	4,571	29,404	33,975	13.5
Dec 2005	5,100	26,287	31,388	16.2
Jun 2006	6,070	23,826	29,896	20.3
Dec 2006	6,751	21,875	28,626	23.6
Jun 2007	7,728	20,983	28,711	26.9

Only LECs with at least 10,000 lines in a state were required to report through December 2004. Beginning with the June 2005 data all LECs are required to report. Some historical data have been revised.

Chart 5
Competitive Local Exchange Carrier Lines by Type of Technology
(End-User Switched Access Lines in Thousands)

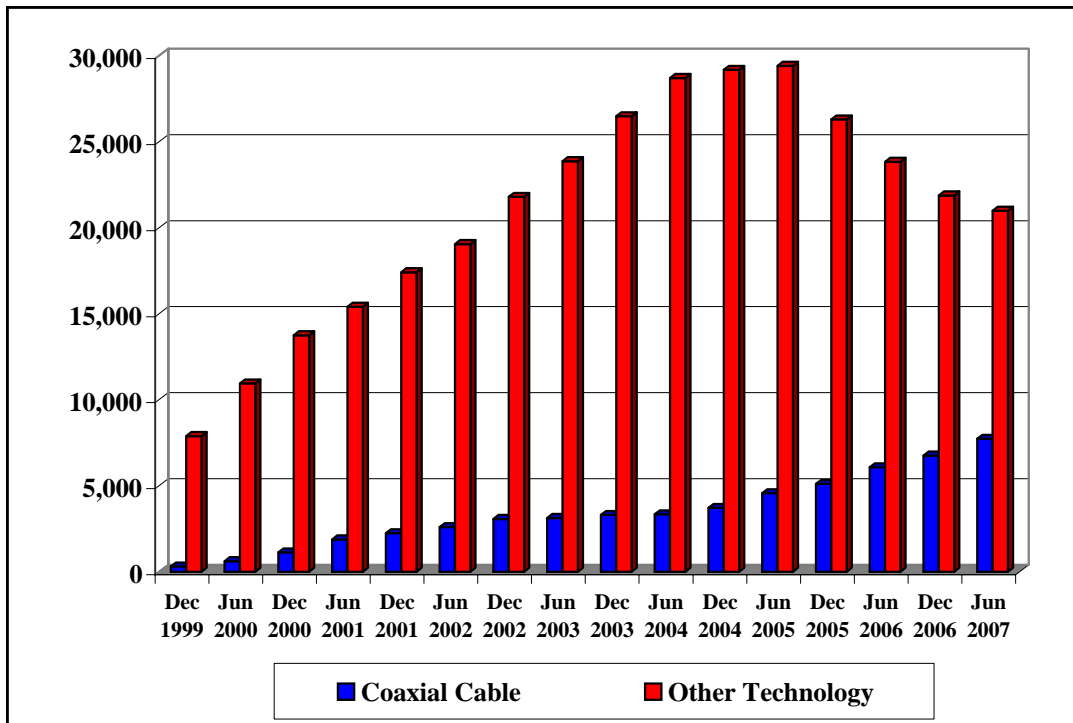


Table 6
Presubscribed Interstate Long Distance Lines
(In Thousands)

	June 30, 2007				
	RBOC	Other ILEC	ILEC Total	CLEC	Total
Residential					
Presubscribed	45,677	9,829	55,506	10,416	65,922
Not Presubscribed	23,714	6,288	30,002	1,690	31,692
All Lines	69,391	16,117	85,508	12,106	97,614
Percent Presubscribed	66%	61%	65%	86%	68%
Business					
Presubscribed	20,750	2,683	23,433	11,872	35,305
Not Presubscribed	21,833	3,685	25,518	4,734	31,692
All Lines	42,583	6,368	48,951	16,606	65,557
Percent Presubscribed	49%	42%	48%	71%	54%
Total					
Presubscribed	66,427	12,512	78,939	22,288	101,227
Not Presubscribed	45,547	9,973	55,520	6,424	61,944
All Lines	111,974	22,485	134,459	28,711	163,170
Percent Presubscribed	59%	56%	59%	78%	62%
	December 31, 2006				
	RBOC	Other ILEC	ILEC Total	CLEC	Total
Residential					
Presubscribed	48,207	9,750	57,957	10,527	68,484
Not Presubscribed	24,803	6,407	31,210	1,684	32,894
All Lines	73,010	16,157	89,167	12,211	101,378
Percent Presubscribed	66%	60%	65%	86%	68%
Business					
Presubscribed	20,304	2,462	22,765	11,192	33,957
Not Presubscribed	22,996	3,906	26,902	5,223	32,894
All Lines	43,300	6,367	49,667	16,415	66,082
Percent Presubscribed	47%	39%	46%	68%	51%
Total					
Presubscribed	68,510	12,212	80,722	21,718	102,441
Not Presubscribed	47,799	10,312	58,112	6,908	65,019
All Lines	116,310	22,524	138,834	28,626	167,460
Percent Presubscribed	59%	54%	58%	76%	61%

Figures may not add to totals due to rounding. Some data for December 2006 have been revised.

Table 7
End-User Switched Access Lines Served by Reporting Local Exchange Carriers
(As of June 30, 2007)

State	ILECs	CLECs	Total	CLEC Share
Alabama	1,982,341	292,484	2,274,825	13 %
Alaska	317,632	*	*	*
American Samoa	10,705	0	10,705	0
Arizona	2,109,166	1,042,689	3,151,855	33
Arkansas	1,131,562	178,090	1,309,652	14
California	18,485,441	2,898,469	21,383,910	14
Colorado	2,134,297	424,043	2,558,340	17
Connecticut	1,784,922	260,817	2,045,739	13
Delaware	432,092	99,197	531,289	19
District of Columbia	832,308	137,088	969,396	14
Florida	8,707,976	1,295,973	10,003,949	13
Georgia	3,956,794	729,770	4,686,564	16
Guam	66,984	0	66,984	0
Hawaii	562,078	87,551	649,629	13
Idaho	651,097	78,053	729,150	11
Illinois	5,975,780	949,607	6,925,387	14
Indiana	2,874,513	292,751	3,167,264	9
Iowa	1,244,715	250,859	1,495,574	17
Kansas	1,045,618	349,999	1,395,617	25
Kentucky	1,684,001	327,737	2,011,738	16
Louisiana	1,801,337	363,022	2,164,359	17
Maine	649,459	130,629	780,088	17
Maryland	2,984,383	526,796	3,511,179	15
Massachusetts	2,829,937	865,351	3,695,288	23
Michigan	4,118,050	923,265	5,041,315	18
Minnesota	2,119,898	651,920	2,771,818	24
Mississippi	1,090,688	125,099	1,215,787	10
Missouri	2,722,229	436,388	3,158,617	14
Montana	434,740	82,330	517,070	16
Nebraska	627,976	257,518	885,494	29
Nevada	1,158,231	355,806	1,514,037	24
New Hampshire	575,471	171,449	746,920	23
New Jersey	4,346,654	895,483	5,242,137	17
New Mexico	834,387	76,701	911,088	8
New York	7,404,103	2,866,491	10,270,594	28
North Carolina	3,973,280	846,146	4,819,426	18
North Dakota	261,387	70,727	332,114	21
Northern Mariana Isl.	19,406	0	19,406	0
Ohio	4,973,233	1,068,758	6,041,991	18
Oklahoma	1,375,337	419,998	1,795,335	23
Oregon	1,501,815	325,293	1,827,108	18
Pennsylvania	5,953,091	1,520,708	7,473,799	20
Puerto Rico	916,442	*	*	*
Rhode Island	327,155	291,057	618,212	47
South Carolina	1,865,872	348,666	2,214,538	16
South Dakota	272,296	116,651	388,947	30
Tennessee	2,618,129	483,262	3,101,391	16
Texas	9,608,287	1,858,766	11,467,053	16
Utah	863,672	242,423	1,106,095	22
Vermont	355,423	47,415	402,838	12
Virgin Islands	67,321	0	67,321	0
Virginia	3,642,470	1,048,063	4,690,533	22
Washington	2,762,458	479,502	3,241,960	15
West Virginia	806,214	121,173	927,387	13
Wisconsin	2,375,288	688,513	3,063,801	22
Wyoming	232,779	46,164	278,943	17
Nationwide	134,458,920	28,711,461	163,170,381	18 %

* Data withheld to maintain firm confidentiality.

Table 8
Competitive Local Exchange Carrier Share of End-User Switched Access Lines

State	2001		2002		2003		2004		2005		2006		2007
	Jun	Dec	Jun	Dec	Jun	Dec	Jun	Dec	Jun	Dec	Jun	Dec	Jun
Alabama	5 %	5 %	5 %	9 %	11 %	13 %	15 %	16 %	16 %	15 %	16 %	13 %	13 %
Alaska	*	*	*	*	*	*	*	*	*	*	26	*	*
American Samoa	NA	NA	NA	NA	NA	NA	NA	NA	0	0	0	0	0
Arizona	7	9	11	12	16	22	25	25	27	30	30	32	33
Arkansas	*	*	*	10	*	11	12	12	13	11	12	13	14
California	7	8	9	11	13	15	16	17	18	13	13	14	14
Colorado	10	13	14	15	16	17	17	16	17	20	19	17	17
Connecticut	7	7	9	9	10	10	11	13	14	11	12	12	13
Delaware	0	0	*	*	9	12	16	16	20	20	18	18	19
District of Columbia	12	13	16	14	16	17	19	19	20	17	14	14	14
Florida	7	7	9	13	13	14	16	16	16	17	15	13	13
Georgia	10	11	13	15	17	18	19	20	21	18	19	14	16
Guam	NA	NA	NA	NA	NA	NA	NA	NA	NA	0	0	0	0
Hawaii	*	*	*	*	*	*	*	*	6	7	9	11	13
Idaho	*	*	*	*	5	6	7	7	10	10	11	10	11
Illinois	13	15	17	19	19	20	21	22	20	15	15	15	14
Indiana	5	5	7	8	9	13	14	13	14	10	10	10	9
Iowa	11	12	12	13	13	13	14	14	14	14	15	16	17
Kansas	8	9	12	17	21	21	22	24	25	21	24	23	25
Kentucky	*	*	*	4	5	8	11	11	14	15	16	15	16
Louisiana	4	4	5	7	9	10	12	14	19	17	18	16	17
Maine	*	*	*	*	8	10	14	18	20	20	16	16	17
Maryland	6	4	6	7	10	14	16	18	18	18	16	15	15
Massachusetts	12	15	16	16	18	21	23	25	25	25	24	24	23
Michigan	9	13	18	21	22	25	26	26	25	19	18	17	18
Minnesota	11	13	14	17	17	19	20	21	21	24	23	22	24
Mississippi	4	3	2	6	7	9	10	10	14	12	13	10	10
Missouri	6	7	8	10	10	11	13	13	14	11	13	13	14
Montana	*	*	*	*	3	4	4	4	8	10	12	14	16
Nebraska	*	12	16	18	20	21	22	25	25	26	27	28	29
Nevada	10	*	*	11	9	10	11	11	13	13	17	15	24
New Hampshire	8	10	13	14	16	17	20	23	25	25	24	23	23
New Jersey	4	5	6	10	15	19	20	22	22	21	17	18	17
New Mexico	*	*	*	*	*	*	8	8	8	7	8	8	8
New York	23	25	25	24	27	28	30	30	30	31	27	27	28
North Carolina	6	6	6	8	9	9	11	13	13	15	16	16	18
North Dakota	*	*	*	*	*	8	8	7	20	19	20	21	21
Northern Mariana Isl.	NA	NA	NA	NA	NA	NA	NA	NA	NA	0	0	0	0
Ohio	4	5	7	9	11	14	15	15	15	15	15	16	18
Oklahoma	6	8	10	11	11	14	13	16	18	18	20	21	23
Oregon	5	7	7	9	8	12	13	16	13	19	16	17	18
Pennsylvania	13	14	15	16	17	19	20	22	23	23	20	19	20
Puerto Rico	*	*	*	*	*	*	*	*	*	*	*	*	*
Rhode Island	10	16	18	21	25	28	32	35	40	42	43	46	47
South Carolina	4	3	5	7	9	9	10	11	13	13	15	14	16
South Dakota	*	*	*	*	14	18	*	*	30	33	33	30	30
Tennessee	8	8	7	9	10	11	14	15	16	17	18	15	16
Texas	14	16	16	17	18	18	19	19	19	16	16	17	16
Utah	11	13	13	15	19	20	23	24	23	22	24	21	22
Vermont	*	*	*	*	*	*	*	*	14	12	12	12	12
Virgin Islands	0	0	0	0	0	0	0	0	*	*	*	0	0
Virginia	9	11	12	12	14	17	20	21	21	22	21	22	22
Washington	6	8	9	10	10	11	13	14	14	14	14	14	15
West Virginia	*	*	*	*	*	*	*	11	12	12	12	13	13
Wisconsin	9	11	12	13	15	18	19	18	19	18	19	20	22
Wyoming	*	*	*	*	*	*	*	*	11	12	14	15	17
Nationwide	9 %	10 %	11 %	13 %	15 %	16 %	18 %	18 %	19 %	18 %	17 %	17 %	18 %

* Data withheld to maintain firm confidentiality. NA is an abbreviation for not applicable. Some historical data have been revised.

Only LECs with at least 10,000 lines in a state were required to report through December 2004. Beginning with the June 2005 data all LECs are required to report.

Table 9
End-User Switched Access Lines Served by Reporting Competitive Local Exchange Carriers

State	2001	2002	2003	2004	2005		2006		2007
	Jun	Jun	Jun	Jun	Jun	Dec	Jun	Dec	Jun
Alabama	121,059	118,721	265,556	365,060	393,856	359,149	365,944	300,675	292,484
Alaska	*	*	*	*	*	*	116,432	*	*
American Samoa	0	0	0	0	0	0	0	0	0
Arizona	231,777	354,592	519,128	814,194	864,526	978,582	970,453	1,017,866	1,042,689
Arkansas	*	*	*	162,996	181,656	152,089	162,545	166,346	178,090
California	1,668,232	2,158,878	3,046,959	3,774,501	4,030,126	3,023,367	2,900,279	3,045,769	2,898,469
Colorado	325,983	434,125	495,007	498,583	496,728	590,821	528,727	452,270	424,043
Connecticut	164,379	222,815	234,372	272,385	316,131	251,351	261,681	261,499	260,817
Delaware	0	*	53,473	92,810	121,800	118,235	101,513	100,159	99,197
District of Columbia	124,630	161,114	174,584	215,421	222,977	172,671	144,600	143,615	137,088
Florida	864,892	1,035,417	1,552,996	1,785,001	1,744,981	1,868,560	1,617,538	1,339,771	1,295,973
Georgia	515,730	704,651	861,156	977,358	1,032,383	886,413	909,236	654,696	729,770
Guam	0	0	0	0	0	0	0	0	0
Hawaii	*	*	*	*	38,447	49,317	60,696	74,309	87,551
Idaho	*	*	33,864	47,398	77,018	75,951	80,698	76,063	78,053
Illinois	1,113,112	1,468,057	1,616,765	1,672,522	1,601,784	1,135,562	1,139,239	1,075,230	949,607
Indiana	180,221	252,722	348,159	501,936	493,450	359,622	338,113	335,322	292,751
Iowa	164,637	190,869	195,860	199,115	216,229	221,758	229,603	238,161	250,859
Kansas	121,294	176,322	318,862	316,946	362,494	301,121	346,533	327,099	349,999
Kentucky	*	*	97,288	218,810	302,425	306,370	337,467	313,256	327,737
Louisiana	108,820	115,220	212,363	283,333	459,748	365,473	394,199	357,862	363,022
Maine	*	*	70,275	113,957	168,895	163,818	134,610	122,984	130,629
Maryland	211,499	232,793	379,961	615,757	716,741	690,791	590,557	552,190	526,796
Massachusetts	576,442	736,932	846,276	997,760	1,089,068	1,036,974	978,953	928,137	865,351
Michigan	583,653	1,211,379	1,384,973	1,575,267	1,482,865	1,048,822	992,598	882,821	923,265
Minnesota	353,245	443,739	534,965	604,152	643,452	724,198	675,623	641,373	651,920
Mississippi	51,496	22,966	93,912	131,218	174,913	155,966	161,058	124,832	125,099
Missouri	224,442	279,342	334,319	430,538	451,936	368,561	425,768	402,764	436,388
Montana	*	*	17,473	19,204	43,205	52,014	61,726	71,746	82,330
Nebraska	*	159,617	190,754	205,560	228,138	237,496	244,058	248,839	257,518
Nevada	144,453	*	132,684	149,735	185,347	182,033	245,553	218,960	355,806
New Hampshire	67,315	109,610	136,510	170,433	217,847	209,366	195,539	182,196	171,449
New Jersey	300,594	396,865	1,009,996	1,319,513	1,389,235	1,282,857	993,630	977,119	895,483
New Mexico	*	*	*	76,469	75,643	65,123	76,512	75,169	76,701
New York	3,138,133	3,259,221	3,478,918	3,684,036	3,574,947	3,552,701	3,043,468	2,941,533	2,866,491
North Carolina	323,594	328,715	443,600	576,538	627,184	748,608	797,793	767,508	846,146
North Dakota	*	*	*	22,502	68,767	66,830	68,351	70,031	70,727
Northern Mariana Isl.	0	0	0	0	0	0	0	0	0
Ohio	280,088	510,623	754,020	979,885	981,363	953,386	963,094	962,245	1,068,758
Oklahoma	125,912	203,028	217,854	242,737	328,505	329,248	361,715	387,450	419,998
Oregon	118,425	154,492	167,965	267,121	260,065	375,380	305,519	317,921	325,293
Pennsylvania	1,122,623	1,329,357	1,413,458	1,706,036	1,877,661	1,891,822	1,572,224	1,437,452	1,520,708
Puerto Rico	*	*	*	*	*	*	*	*	*
Rhode Island	69,237	119,112	167,714	213,787	267,486	264,827	275,526	287,218	291,057
South Carolina	90,241	121,331	204,252	226,284	290,102	291,941	329,943	321,155	348,666
South Dakota	*	*	49,243	*	128,053	136,073	135,275	119,025	116,651
Tennessee	272,211	247,056	349,588	475,312	538,227	543,386	575,957	464,505	483,262
Texas	1,891,131	2,170,914	2,266,028	2,320,273	2,332,263	1,884,267	1,905,521	1,968,836	1,858,766
Utah	145,603	161,193	235,170	288,009	280,696	260,478	281,796	244,772	242,423
Vermont	*	*	*	*	60,569	51,405	49,094	47,827	47,415
Virgin Islands	0	0	0	0	*	*	*	0	0
Virginia	402,528	558,206	738,479	994,588	1,058,163	1,110,090	1,046,894	1,031,839	1,048,063
Washington	229,693	358,933	386,104	494,375	505,432	514,149	506,360	479,283	479,502
West Virginia	*	*	*	*	117,620	118,349	117,009	119,160	121,173
Wisconsin	322,735	420,200	526,343	626,809	644,787	588,388	611,912	652,562	688,513
Wyoming	*	*	*	*	30,425	34,004	39,443	43,552	46,164
Total	17,274,727	21,644,928	26,985,345	32,033,915	33,975,336	31,387,839	29,896,109	28,625,971	28,711,461

* Data withheld to maintain firm confidentiality.

Only LECs with at least 10,000 lines in a state were required to report through December 2004. Beginning with the June 2005 data all LECs are required to report. Some historical data have been revised.

Table 10
End-User Switched Access Lines Served by Reporting Incumbent Local Exchange Carriers

State	2001	2002	2003	2004	2005		2006		2007
	Jun	Jun	Jun	Jun	Jun	Dec	Jun	Dec	Jun
Alabama	2,413,440	2,330,940	2,183,237	1,997,058	2,024,441	2,024,260	1,978,871	2,016,443	1,982,341
Alaska	365,242	341,753	318,056	309,016	328,415	326,374	324,892	321,138	317,632
American Samoa	0	0	0	0	10,659	10,838	11,008	10,737	10,705
Arizona	3,062,586	2,947,967	2,700,186	2,415,432	2,325,669	2,295,247	2,226,531	2,175,239	2,109,166
Arkansas	1,412,863	1,304,659	1,220,542	1,172,200	1,216,081	1,215,421	1,192,839	1,163,744	1,131,562
California	23,103,077	22,315,423	20,645,363	19,478,761	18,944,739	19,630,709	19,479,382	18,926,123	18,485,441
Colorado	2,805,532	2,717,320	2,557,814	2,439,132	2,370,884	2,337,733	2,276,358	2,206,511	2,134,297
Connecticut	2,363,687	2,305,082	2,219,140	2,102,689	1,984,587	1,962,233	1,928,048	1,848,934	1,784,922
Delaware	567,381	537,498	546,684	497,466	478,837	467,428	467,676	450,371	432,092
District of Columbia	887,590	829,592	932,576	915,583	894,341	871,773	891,832	854,986	832,308
Florida	11,211,674	10,603,872	10,133,865	9,633,565	9,345,496	9,209,755	9,013,194	8,974,705	8,707,976
Georgia	4,905,002	4,604,834	4,308,760	4,044,935	3,972,427	3,969,582	3,843,615	4,045,038	3,956,794
Guam	0	0	0	0	0	67,011	67,721	68,091	66,984
Hawaii	739,979	729,239	707,634	683,146	643,998	627,319	608,403	583,800	562,078
Idaho	732,814	707,180	687,342	666,914	682,165	672,447	666,382	664,163	651,097
Illinois	7,558,613	7,322,494	6,741,172	6,326,988	6,214,096	6,497,122	6,354,337	6,154,122	5,975,780
Indiana	3,576,710	3,542,715	3,327,235	3,095,055	3,070,315	3,111,533	3,079,875	2,971,103	2,874,513
Iowa	1,379,872	1,357,155	1,296,148	1,232,364	1,355,951	1,324,575	1,301,575	1,273,178	1,244,715
Kansas	1,441,940	1,324,804	1,186,953	1,102,696	1,110,300	1,122,549	1,100,313	1,073,934	1,045,618
Kentucky	2,170,191	2,141,611	2,024,894	1,841,495	1,791,507	1,768,140	1,731,842	1,725,176	1,684,001
Louisiana	2,505,961	2,428,935	2,251,091	2,040,518	1,953,820	1,832,399	1,800,472	1,825,156	1,801,337
Maine	801,649	768,216	775,378	690,024	688,379	663,772	692,360	669,004	649,459
Maryland	3,599,027	3,488,961	3,541,493	3,239,029	3,173,227	3,096,645	3,166,012	3,079,098	2,984,383
Massachusetts	4,131,520	3,804,513	3,771,142	3,432,038	3,245,760	3,102,061	3,075,544	2,927,081	2,829,937
Michigan	6,027,730	5,498,139	4,819,294	4,487,619	4,410,849	4,608,796	4,490,783	4,303,103	4,118,050
Minnesota	2,861,684	2,804,937	2,572,413	2,377,827	2,384,842	2,318,991	2,273,378	2,209,799	2,119,898
Mississippi	1,356,136	1,332,853	1,235,339	1,148,580	1,117,163	1,113,684	1,089,448	1,108,030	1,090,688
Missouri	3,446,252	3,262,072	3,067,732	2,906,801	2,892,074	2,907,056	2,841,990	2,777,895	2,722,229
Montana	527,989	514,353	500,865	482,548	487,046	472,596	460,058	445,368	434,740
Nebraska	931,979	867,474	775,829	736,257	692,446	681,113	661,351	643,858	627,976
Nevada	1,366,124	1,351,282	1,304,641	1,272,060	1,251,993	1,246,342	1,233,166	1,200,201	1,158,231
New Hampshire	775,864	741,553	723,408	670,480	645,599	624,329	624,466	597,625	575,471
New Jersey	6,707,243	6,226,079	5,766,555	5,148,627	4,846,691	4,714,621	4,784,134	4,543,272	4,346,654
New Mexico	977,439	969,763	940,232	894,345	902,178	892,715	876,787	859,647	834,387
New York	10,689,293	9,806,596	9,588,446	8,685,767	8,292,109	8,019,979	8,297,089	7,900,420	7,404,103
North Carolina	5,040,317	4,942,113	4,682,253	4,440,280	4,239,339	4,141,827	4,059,971	4,067,105	3,973,280
North Dakota	312,573	303,326	280,507	265,881	280,323	278,956	271,969	267,339	261,387
Northern Mariana Isl	0	0	0	0	0	22,770	21,313	20,644	19,406
Ohio	6,876,434	6,705,911	6,131,768	5,697,351	5,504,901	5,574,685	5,367,588	5,167,995	4,973,233
Oklahoma	1,923,027	1,822,278	1,679,984	1,591,936	1,534,575	1,520,798	1,469,601	1,425,484	1,375,337
Oregon	2,079,221	2,005,347	1,871,970	1,743,918	1,672,650	1,643,476	1,627,341	1,561,802	1,501,815
Pennsylvania	7,818,599	7,288,959	7,146,626	6,638,982	6,400,366	6,299,554	6,385,263	6,174,592	5,953,091
Puerto Rico	1,300,665	1,288,718	1,212,779	1,111,894	1,047,636	1,020,878	1,035,002	993,726	916,442
Rhode Island	604,128	547,728	509,749	448,853	394,144	369,454	362,993	339,641	327,155
South Carolina	2,239,383	2,253,384	2,143,712	2,025,422	1,895,283	1,938,813	1,907,925	1,908,827	1,865,872
South Dakota	338,834	314,755	296,879	271,682	297,036	279,170	279,589	278,416	272,296
Tennessee	3,352,224	3,232,548	3,042,739	2,818,771	2,727,436	2,717,515	2,675,649	2,695,269	2,618,129
Texas	11,496,247	11,006,831	10,451,045	10,139,446	9,730,233	10,036,157	9,958,460	9,738,139	9,608,287
Utah	1,149,667	1,090,791	1,019,089	940,678	917,429	924,423	915,178	894,463	863,672
Vermont	399,084	383,917	385,901	366,716	369,720	363,874	369,731	362,375	355,423
Virgin Islands	70,426	71,984	71,132	70,672	70,462	70,038	69,272	68,269	67,321
Virginia	4,203,412	4,276,468	4,366,897	4,075,297	3,924,917	3,834,232	3,843,853	3,734,171	3,642,470
Washington	3,751,683	3,622,857	3,452,669	3,276,000	3,136,578	3,062,790	2,993,977	2,868,067	2,762,458
West Virginia	980,575	940,483	962,417	912,228	891,492	875,854	852,152	827,656	806,214
Wisconsin	3,151,854	3,145,341	2,953,647	2,754,836	2,725,490	2,739,056	2,669,652	2,604,820	2,375,288
Wyoming	259,839	256,403	241,316	235,360	248,614	251,633	244,836	238,035	232,779
Total	174,752,275	167,330,006	158,274,538	147,993,218	143,757,708	143,773,101	142,293,047	138,833,928	134,458,920

Only LECs with at least 10,000 lines in a state were required to report through December 2004. Beginning with the June 2005 data all LECs are required to report. Some data for December 2006 have been revised.

Table 11
CLEC-Reported End-User Switched Access Lines by State
(As of June 30, 2007)

State	Resold Lines	UNEs	CLEC-Owned	Total
Alabama	33,355	172,496	86,634	292,484
Alaska	*	*	*	*
American Samoa	0	0	0	0
Arizona	174,135	169,731	698,824	1,042,689
Arkansas	4,603	68,917	104,572	178,090
California	675,120	979,069	1,244,279	2,898,469
Colorado	105,789	208,143	110,112	424,043
Connecticut	31,162	97,129	132,526	260,817
Delaware	36,083	58,284	4,830	99,197
District of Columbia	55,213	41,288	40,587	137,088
Florida	428,806	647,122	220,045	1,295,973
Georgia	103,419	410,686	215,666	729,770
Guam	0	0	0	0
Hawaii	23,624	5,018	58,910	87,551
Idaho	26,162	38,653	13,238	78,053
Illinois	120,860	528,333	300,415	949,607
Indiana	30,794	173,224	88,732	292,751
Iowa	46,894	77,457	126,509	250,859
Kansas	14,110	127,877	208,015	349,999
Kentucky	63,601	104,515	159,621	327,737
Louisiana	20,085	134,717	208,222	363,022
Maine	31,184	45,520	53,925	130,629
Maryland	239,484	243,380	43,931	526,796
Massachusetts	295,053	278,646	291,652	865,351
Michigan	54,642	709,504	159,120	923,265
Minnesota	140,960	280,174	230,791	651,920
Mississippi	16,925	88,083	20,090	125,099
Missouri	26,765	173,914	235,709	436,388
Montana	10,061	12,783	59,485	82,330
Nebraska	45,178	16,148	196,192	257,518
Nevada	103,038	99,497	153,272	355,806
New Hampshire	45,165	79,016	47,268	171,449
New Jersey	491,743	287,817	115,926	895,483
New Mexico	35,226	21,993	19,481	76,701
New York	994,504	798,066	1,073,921	2,866,491
North Carolina	97,277	298,326	450,542	846,146
North Dakota	4,691	24,783	41,252	70,727
Northern Mariana Isl.	0	0	0	0
Ohio	105,295	385,087	578,377	1,068,758
Oklahoma	4,802	117,594	297,603	419,998
Oregon	55,917	228,671	40,704	325,293
Pennsylvania	444,712	699,276	376,723	1,520,708
Puerto Rico	*	*	*	*
Rhode Island	*	40,343	*	291,057
South Carolina	21,339	160,272	167,056	348,666
South Dakota	3,532	4,559	108,561	116,651
Tennessee	116,557	223,608	143,096	483,262
Texas	206,344	837,513	814,911	1,858,766
Utah	65,347	134,803	42,272	242,423
Vermont	*	21,379	*	47,415
Virgin Islands	0	0	0	0
Virginia	279,286	324,735	444,043	1,048,063
Washington	128,972	258,606	91,925	479,502
West Virginia	26,901	80,690	13,583	121,173
Wisconsin	24,465	370,359	293,691	688,513
Wyoming	2,486	14,038	29,641	46,164
Total	6,184,055	11,504,607	11,022,829	28,711,461

* Data withheld to maintain firm confidentiality.

Table 12
Percentage of Lines Provided to Residential Customers

State	ILECs		CLECs		Total	
	Dec 2006	Jun 2007	Dec 2006	Jun 2007	Dec 2006	Jun 2007
Alabama	71	70	37	39	67	66
Alaska	55	54	*	*	*	*
American Samoa	53	54	NA	NA	53	54
Arizona	65	63	63	63	64	63
Arkansas	67	67	39	40	64	63
California	60	60	44	45	58	58
Colorado	67	66	27	22	61	59
Connecticut	65	63	42	42	62	61
Delaware	64	63	28	27	58	56
District of Columbia	24	24	16	15	23	23
Florida	67	65	25	21	61	60
Georgia	62	61	37	31	59	57
Guam	53	53	NA	NA	53	53
Hawaii	64	62	42	48	62	60
Idaho	69	68	28	24	65	63
Illinois	58	58	36	35	55	55
Indiana	66	66	42	32	64	63
Iowa	70	70	58	65	68	69
Kansas	62	62	65	62	63	62
Kentucky	68	67	63	64	67	66
Louisiana	66	64	52	54	63	63
Maine	75	75	45	46	70	70
Maryland	58	57	38	36	55	54
Massachusetts	62	61	37	33	56	54
Michigan	61	60	58	54	60	59
Minnesota	71	71	38	36	64	63
Mississippi	67	67	41	39	65	64
Missouri	68	68	53	53	66	66
Montana	68	67	57	63	67	67
Nebraska	58	57	60	60	59	58
Nevada	64	63	37	46	60	59
New Hampshire	73	72	29	24	63	61
New Jersey	61	60	33	31	56	55
New Mexico	69	69	26	24	66	65
New York	62	61	44	46	57	57
North Carolina	67	67	45	47	64	63
North Dakota	69	69	60	59	67	67
Northern Mariana Isl.	49	49	NA	NA	49	49
Ohio	66	66	60	61	65	65
Oklahoma	66	66	62	63	65	65
Oregon	72	72	13	13	62	61
Pennsylvania	70	69	27	24	62	60
Puerto Rico	77	79	*	*	*	*
Rhode Island	64	64	60	61	62	63
South Carolina	69	68	45	47	66	65
South Dakota	65	64	75	72	68	66
Tennessee	70	69	26	28	64	63
Texas	63	63	51	47	61	61
Utah	67	67	26	20	58	56
Vermont	74	74	12	12	67	67
Virgin Islands	69	69	NA	NA	69	69
Virginia	59	58	47	45	57	55
Washington	70	69	21	18	63	61
West Virginia	77	77	21	20	70	70
Wisconsin	63	63	57	59	62	62
Wyoming	58	58	72	76	60	61
Nationwide	64	64	43	42	61	60

* Data withheld to maintain firm confidentiality. NA is an abbreviation for not applicable. Some data for December 2006 have been revised.

Table 13
Number of Reporting Local Exchange Carriers
(As of June 30, 2007)

State	ILECs	CLECs	Total
Alabama	21	45	66
Alaska	17	5	22
American Samoa	1	0	1
Arizona	15	28	43
Arkansas	20	29	49
California	16	52	68
Colorado	23	28	51
Connecticut	2	23	25
Delaware	1	24	25
District of Columbia	1	26	27
Florida	10	64	74
Georgia	26	59	85
Guam	1	0	1
Hawaii	2	7	9
Idaho	21	21	42
Illinois	45	63	108
Indiana	31	49	80
Iowa	135	57	192
Kansas	36	43	79
Kentucky	17	55	72
Louisiana	11	40	51
Maine	9	20	29
Maryland	2	45	47
Massachusetts	4	39	43
Michigan	26	47	73
Minnesota	57	50	107
Mississippi	14	42	56
Missouri	35	41	76
Montana	15	23	38
Nebraska	32	25	57
Nevada	14	26	40
New Hampshire	7	26	33
New Jersey	2	49	51
New Mexico	14	24	38
New York	24	57	81
North Carolina	21	53	74
North Dakota	20	24	44
Northern Mariana Isl.	1	0	1
Ohio	35	49	84
Oklahoma	36	39	75
Oregon	28	34	62
Pennsylvania	24	52	76
Puerto Rico	1	3	4
Rhode Island	1	20	21
South Carolina	17	45	62
South Dakota	25	23	48
Tennessee	18	44	62
Texas	52	67	119
Utah	11	24	35
Vermont	8	13	21
Virgin Islands	1	0	1
Virginia	14	40	54
Washington	19	37	56
West Virginia	7	24	31
Wisconsin	44	48	92
Wyoming	11	16	27
Nationwide - Unduplicated	814	398	1,212

Each report represents all of a company's operations in a given state. Carriers with both ILEC and CLEC operations in the same state provide separate reports.

Table 14
Mobile Wireless Telephone Subscribers ¹

State	Jun 2007		Subscribers								
	Carriers ¹	Percent Resold ²	2001	2002	2003	2004	2005		2006		2007
			Jun	Jun	Jun	Jun	Jun	Dec	Jun	Dec	Jun
Alabama	12	6 %	1,930,631	2,027,845	2,100,557	2,301,847	2,874,367	3,104,664	3,275,933	3,374,701	3,605,490
Alaska	9	1	218,424	242,133	*	307,323	340,507	376,695	397,429	412,112	431,653
American Samoa	*	*	0	0	0	*	*	*	*	*	*
Arizona	10	9	2,018,410	2,412,998	2,643,952	3,079,657	3,542,844	3,844,357	4,153,491	4,405,032	4,637,471
Arkansas	6	7	891,275	1,130,302	1,351,291	1,376,564	1,680,975	1,780,621	1,924,313	2,044,217	2,149,312
California	12	5	14,184,625	16,007,376	18,892,619	21,575,797	24,572,034	25,537,232	27,496,682	29,717,334	30,203,842
Colorado	10	10	1,983,405	2,247,166	2,426,929	2,727,910	3,040,589	3,246,994	3,428,381	3,608,209	3,756,215
Connecticut	5	6	1,418,367	1,577,873	1,791,944	2,064,204	2,328,966	2,463,249	2,582,367	2,705,023	2,786,594
Delaware	4	8	389,284	433,059	503,353	593,452	585,113	618,165	650,328	682,636	724,342
Dist. of Columbia	4	6	382,457	415,399	520,182	555,958	752,548	825,195	878,846	880,077	965,816
Florida	9	6	7,536,670	8,607,715	10,252,348	11,916,615	12,619,929	12,568,133	14,176,756	14,761,666	15,255,433
Georgia	11	6	4,076,119	4,300,831	4,709,288	5,332,517	6,001,411	6,079,022	6,865,466	7,281,724	7,598,387
Guam	*	*	*	*	*	*	*	*	*	*	*
Hawaii	4	4	543,283	640,247	732,262	819,262	934,405	983,227	1,010,341	1,034,788	1,066,608
Idaho	16	7	398,781	500,693	572,406	653,779	773,893	834,219	901,455	972,825	1,018,617
Illinois	10	7	5,621,044	5,409,370	6,834,217	7,529,966	8,227,185	8,654,888	9,147,657	9,588,517	9,949,126
Indiana	9	10	1,781,247	2,032,290	2,456,509	2,844,568	3,442,612	3,715,504	3,972,560	4,271,412	4,448,186
Iowa	52	8	861,382	1,157,580	1,250,305	1,445,711	1,633,697	1,811,400	1,867,015	2,009,826	2,058,022
Kansas	12	12	901,225	1,061,171	1,195,230	1,345,160	1,659,662	1,794,268	1,905,342	2,046,542	2,133,399
Kentucky	10	10	1,176,756	1,505,982	1,595,290	2,000,459	2,507,816	2,662,278	2,820,938	2,966,195	3,015,370
Louisiana	9	7	1,677,292	2,187,811	2,365,224	2,547,153	2,942,463	3,191,583	3,355,503	3,492,358	3,611,553
Maine	6	14	399,616	457,835	524,246	610,533	710,985	746,141	786,811	844,537	882,039
Maryland	6	6	2,446,818	2,684,441	3,108,086	3,575,747	3,967,969	4,239,259	4,470,542	4,691,026	4,818,275
Massachusetts	5	6	2,753,685	3,289,934	3,506,039	3,919,139	4,487,601	4,727,742	4,916,500	5,128,860	5,289,432
Michigan	12	7	4,071,091	4,758,538	4,889,269	5,430,637	6,229,949	6,603,942	6,862,582	7,093,721	7,333,242
Minnesota	8	10	2,014,317	2,254,895	2,564,783	2,823,079	3,132,453	3,379,832	3,542,865	3,701,515	3,833,826
Mississippi	9	8	993,781	1,106,700	1,232,750	1,411,277	1,631,331	1,821,087	1,923,365	2,029,916	2,069,897
Missouri	12	8	1,937,684	2,246,430	2,515,325	2,859,953	3,595,157	3,853,072	4,067,585	4,322,458	4,480,384
Montana	7	5	*	291,429	343,160	*	466,022	525,003	575,034	619,620	650,381
Nebraska	10	5	712,685	838,568	900,744	984,355	1,070,550	1,160,062	1,198,714	1,272,067	1,325,131
Nevada	8	8	766,581	895,586	1,077,380	1,319,684	1,604,713	1,777,387	1,883,273	1,990,215	2,092,872
New Hampshire	6	9	445,181	529,795	598,504	686,746	790,639	849,344	896,661	943,330	973,105
New Jersey	4	5	3,896,778	4,531,457	5,392,240	6,326,459	6,233,984	6,616,560	6,953,528	7,207,018	7,419,289
New Mexico	9	9	619,582	735,107	828,869	939,091	1,024,852	1,170,186	1,252,770	1,333,210	1,415,726
New York	10	7	6,749,096	7,915,526	8,829,070	9,939,759	12,995,534	13,804,502	14,573,548	15,261,760	15,901,378
North Carolina	14	7	3,377,331	4,610,120	4,305,521	4,875,916	5,503,202	5,791,947	6,209,483	6,626,582	6,961,656
North Dakota	6	4	*	*	*	*	367,850	431,675	456,806	472,799	492,101
Northern Mariana Isl.	*	*	*	*	*	*	*	*	*	*	*
Ohio	11	8	4,255,934	4,887,376	5,659,459	6,188,081	6,993,803	7,503,673	7,939,126	8,380,138	8,722,523
Oklahoma	15	8	1,200,234	1,366,475	1,574,588	1,724,505	2,001,835	2,188,590	2,317,197	2,479,877	2,571,878
Oregon	11	8	1,268,909	1,473,883	1,682,036	1,894,285	2,055,890	2,339,414	2,484,176	2,655,905	2,781,196
Pennsylvania	11	9	4,378,216	4,987,067	5,681,653	6,420,037	7,397,397	7,942,340	8,348,713	8,831,238	9,200,793
Puerto Rico	6	4	1,374,747	1,136,619	1,401,599	1,698,702	2,002,851	2,110,798	2,170,540	2,301,275	2,322,737
Rhode Island	4	7	401,805	463,636	527,366	615,398	689,209	749,091	765,355	797,603	828,969
South Carolina	13	7	1,502,345	1,830,516	2,041,541	2,337,367	2,606,827	2,783,511	3,000,861	3,208,504	3,339,733
South Dakota	7	4	*	292,210	344,825	382,906	433,927	481,404	513,850	547,812	569,513
Tennessee	12	8	2,251,208	2,660,068	2,800,735	3,171,487	4,065,964	4,417,140	4,730,704	5,126,510	4,970,756
Texas	29	6	8,294,338	9,650,715	10,776,234	12,091,134	14,424,253	15,644,066	16,927,880	17,822,230	18,792,225
Utah	11	7	833,492	970,854	1,094,563	1,229,029	1,413,756	1,529,501	1,649,265	1,774,755	1,874,345
Vermont	4	15	*	*	*	*	294,984	314,325	333,551	358,052	374,984
Virgin Islands	*	*	*	*	*	*	*	*	*	*	*
Virginia	8	7	3,059,420	3,429,450	3,879,582	4,392,319	4,851,206	5,072,921	5,325,173	5,607,350	6,148,261
Washington	10	9	2,493,214	2,849,043	3,102,750	3,567,896	4,062,372	4,249,357	4,494,964	4,799,143	5,034,885
West Virginia	9	14	452,036	549,722	579,983	713,657	820,838	858,310	964,649	1,040,224	1,095,038
Wisconsin	11	8	2,008,679	2,523,956	2,533,215	2,831,645	3,200,301	3,366,332	3,517,283	3,509,528	3,641,432
Wyoming	9	7	173,939	168,232	276,344	277,658	315,347	342,008	358,668	387,164	410,464
Nationwide	170	7 %	114,028,928	130,751,459	147,623,734	167,313,001	192,053,067	203,667,474	217,418,404	229,619,397	238,229,953

* Data withheld to maintain firm confidentiality.

¹ For data through December 2004, only facilities-based wireless carriers with at least 10,000 mobile telephony subscribers per state were required to report data, and they were instructed to use billing addresses to determine subscriber counts by state. Starting with the June 2005 data, all facilities-based wireless carriers are required to report, and to use the area codes of telephone numbers provided to subscribers to determine subscriber counts by state.

² Percentage of mobile wireless subscribers receiving their service from a mobile wireless reseller.

Table 15
Percentage of Zip Codes with Competitive Local Exchange Carriers (CLECs)

Number of CLECs	2001	2002	2003	2004	2005		2006		2007
	Jun	Jun	Jun	Jun	Jun	Dec	Jun	Dec	Jun
Zero	40.0 %	33.0 %	26.8 %	21.0 %	17.4 %	18.4 %	17.7 %	17.7 %	17.7 %
One	16.3	19.5	18.6	15.3	10.5	11.4	11.3	11.1	11.1
Two	9.9	10.3	10.0	9.8	7.6	7.6	7.8	8.2	8.3
Three	8.2	7.9	6.7	7.5	6.0	6.2	6.2	6.7	6.7
Four	5.6	6.6	5.6	6.1	4.8	4.7	5.0	5.2	5.4
Five	4.1	4.9	5.0	5.4	4.2	4.1	4.2	4.4	4.4
Six	3.3	4.0	4.4	5.6	3.4	3.6	3.5	3.8	3.8
Seven	2.6	3.1	4.1	5.4	3.1	3.3	3.2	3.2	3.4
Eight	2.2	2.5	3.6	5.4	3.1	2.9	2.9	3.0	2.8
Nine	1.7	1.9	3.1	4.0	2.8	2.7	2.8	2.7	2.9
Ten or More	5.9	6.3	12.2	14.7	36.9	35.0	35.3	34.0	33.5

Table 16
Percentage of Households in Zip Codes with Competitive Local Exchange Carriers

Number of CLECs	2001	2002	2003	2004	2005		2006		2007
	Jun	Jun	Jun	Jun	Jun	Dec	Jun	Dec	Jun
Zero	9.5 %	6.6 %	4.5 %	3.0 %	2.2 %	2.4 %	2.3 %	2.4 %	2.4 %
One	9.0	9.1	6.5	4.8	2.1	2.3	2.4	2.5	2.4
Two	8.8	9.0	6.1	4.8	2.3	2.2	2.1	2.2	2.2
Three	11.5	9.5	5.4	4.9	2.2	2.3	2.2	2.4	2.3
Four	10.1	10.3	6.0	5.6	2.2	2.1	2.3	2.4	2.4
Five	8.7	9.0	6.8	5.7	2.2	2.2	2.0	2.4	2.5
Six	7.6	8.4	7.1	7.0	1.9	2.2	1.9	2.4	2.3
Seven	6.0	7.6	7.9	8.1	2.0	2.4	2.2	2.4	2.4
Eight	5.6	6.0	8.0	9.8	2.6	2.5	2.3	2.5	2.4
Nine	4.5	4.6	7.2	8.4	2.4	2.7	2.7	2.5	2.8
Ten or More	18.8	19.7	34.6	37.9	77.9	76.8	77.4	76.1	75.8

Demographic data are from Demographic Power Pack, Current Year Update (2000), MapInfo Corporation. Only LECs with at least 10,000 lines in a state were required to report through December 2004. Beginning with the June 2005 data all LECs are required to report. Figures may not add to 100% due to rounding.

Table 17
Percentage of Zip Codes with Competitive Local Exchange Carriers as of June 30, 2007

State	Number of CLECs								
	Zero	One - Three	Four	Five	Six	Seven	Eight	Nine	Ten or More
Alabama	8 %	27 %	5 %	5 %	5 %	5 %	4 %	4 %	37 %
Alaska	82	18	0	0	0	0	0	0	0
Arizona	15	24	4	6	5	4	6	8	29
Arkansas	23	50	4	4	2	1	1	1	12
California	8	15	4	4	4	2	3	4	55
Colorado	25	23	3	3	3	3	4	3	33
Connecticut	4	39	8	8	8	8	9	4	12
Delaware	0	7	5	3	2	3	3	5	71
District of Columbia	4	8	0	0	0	0	0	0	88
Florida	1	8	3	3	2	3	3	3	73
Georgia	11	26	6	3	4	3	2	2	43
Hawaii	11	56	12	19	2	0	0	0	0
Idaho	39	35	6	4	4	2	1	2	7
Illinois	13	37	6	5	3	2	2	2	30
Indiana	11	31	8	6	5	4	3	3	29
Iowa	36	46	3	2	1	1	1	1	9
Kansas	29	32	7	4	3	3	2	2	17
Kentucky	14	38	8	6	4	4	4	3	19
Louisiana	7	28	4	5	6	4	2	2	41
Maine	11	47	12	9	5	6	3	2	5
Maryland	0	10	6	5	6	5	5	3	60
Massachusetts	1	6	3	3	3	3	4	6	71
Michigan	5	19	5	6	6	5	3	5	46
Minnesota	27	32	5	5	3	1	1	2	23
Mississippi	5	18	8	7	8	4	6	4	40
Missouri	34	29	5	3	3	2	1	2	20
Montana	66	19	3	1	3	2	1	1	3
Nebraska	59	23	2	4	2	2	1	2	6
Nevada	23	23	8	5	4	5	3	4	26
New Hampshire	1	21	10	10	7	10	7	8	25
New Jersey	0	3	2	2	2	2	2	3	84
New Mexico	40	31	6	4	1	4	2	2	10
New York	4	14	4	6	4	4	4	4	56
North Carolina	7	24	7	6	6	4	4	5	36
North Dakota	74	19	2	1	1	1	0	1	3
Ohio	3	26	10	6	7	8	4	4	33
Oklahoma	41	17	3	3	3	2	2	2	26
Oregon	22	32	5	4	3	3	3	3	24
Pennsylvania	9	29	5	4	4	4	3	3	38
Puerto Rico	3	97	0	0	0	0	0	0	0
Rhode Island	0	20	5	4	8	4	8	3	47
South Carolina	12	20	5	5	6	5	2	3	42
South Dakota	62	29	2	2	2	1	1	1	1
Tennessee	18	18	5	4	6	4	3	4	40
Texas	15	20	5	4	3	3	2	2	46
Utah	24	22	7	7	2	3	3	1	31
Vermont	14	43	11	8	6	7	7	1	3
Virginia	13	32	8	5	5	4	3	2	28
Washington	19	28	5	4	3	4	3	3	32
West Virginia	22	40	11	7	5	3	2	2	9
Wisconsin	29	35	4	4	2	2	2	2	21
Wyoming	45	36	4	1	3	4	2	2	3
Nationwide	18 %	26 %	5 %	4 %	4 %	3 %	3 %	3 %	34 %

Table 18
CLEC-Owned End-User Switched Access Lines Served by Reporting Competitive Local Exchange Carriers
(In Thousands)

State	2001		2002		2003		2004		2005		2006		2007
	Jun	Dec	Jun	Dec	Jun	Dec	Jun	Dec	Jun	Dec	Jun	Dec	Jun
Alabama	40	18	6	50	68	76	76	89	70	72	76	87	87
Alaska	*	*	*	*	*	*	*	*	*	*	*	*	*
American Samoa	0	0	0	0	0	0	0	0	0	0	0	0	0
Arizona	132	164	194	211	279	351	409	440	511	645	651	692	699
Arkansas	*	*	*	49	*	46	46	46	68	68	74	87	105
California	762	910	890	891	888	1,025	1,042	1,050	1,204	1,280	1,207	1,363	1,244
Colorado	151	172	183	207	200	163	155	155	161	273	193	148	110
Connecticut	78	91	97	105	104	104	111	122	136	113	125	130	133
Delaware	0	0	*	*	*	*	*	*	2	3	6	6	5
District of Columbia	70	80	74	67	69	71	72	81	110	61	49	51	41
Florida	372	260	302	344	309	331	364	418	320	434	332	304	220
Georgia	184	167	161	197	192	180	182	254	201	152	213	218	216
Guam	0	0	0	0	0	0	0	0	0	0	0	0	0
Hawaii	*	*	*	*	*	*	*	*	15	25	36	41	59
Idaho	*	*	*	*	*	*	*	*	12	24	27	18	13
Illinois	416	467	477	446	403	392	400	488	474	415	448	403	300
Indiana	59	76	76	72	69	79	91	92	94	90	112	114	89
Iowa	21	33	34	37	40	38	40	42	59	71	94	110	127
Kansas	18	25	26	46	56	64	76	102	135	133	172	180	208
Kentucky	*	*	*	50	28	79	83	91	95	34	131	143	160
Louisiana	24	21	24	38	53	77	93	100	160	153	178	191	208
Maine	*	*	*	*	2	2	20	27	47	52	48	45	54
Maryland	83	30	30	24	28	94	116	155	78	60	69	48	44
Massachusetts	277	317	310	366	363	375	390	420	428	394	406	378	292
Michigan	113	113	121	104	85	108	106	160	235	102	129	149	159
Minnesota	61	80	114	153	163	167	169	182	203	243	272	247	231
Mississippi	11	6	*	*	3	4	5	8	19	19	27	20	20
Missouri	51	37	50	70	54	50	55	89	129	142	207	206	236
Montana	*	*	*	*	13	14	15	16	20	30	39	50	59
Nebraska	*	91	103	115	125	130	135	142	168	181	184	192	196
Nevada	37	*	*	35	28	33	30	32	35	38	94	98	153
New Hampshire	29	43	45	59	60	63	65	76	84	80	71	60	47
New Jersey	95	71	88	88	89	92	105	156	144	177	118	145	116
New Mexico	*	*	*	*	*	*	15	15	15	11	23	25	19
New York	579	682	608	432	402	374	418	449	591	879	987	1,061	1,074
North Carolina	111	70	75	77	96	74	101	156	188	238	335	370	451
North Dakota	*	*	*	*	*	6	8	8	12	16	17	16	41
Northern Mariana Isl.	0	0	0	0	0	0	0	0	0	0	0	0	0
Ohio	135	144	153	83	69	85	108	137	233	438	489	503	578
Oklahoma	77	89	115	114	111	174	138	178	188	205	238	265	298
Oregon	60	31	36	45	39	38	35	41	42	63	54	51	41
Pennsylvania	458	512	553	538	494	554	573	654	*	643	498	421	377
Puerto Rico	*	*	*	*	*	*	*	*	*	*	*	*	*
Rhode Island	45	62	76	90	100	116	131	151	171	*	*	*	*
South Carolina	26	7	7	20	25	25	28	38	56	73	112	138	167
South Dakota	*	*	*	*	26	35	*	*	25	79	79	63	109
Tennessee	117	92	56	103	95	90	94	124	92	146	157	155	143
Texas	418	414	406	426	430	436	462	590	659	677	771	881	815
Utah	77	72	80	91	80	73	68	76	62	86	96	63	42
Vermont	*	*	*	*	*	*	*	*	*	11	15	*	*
Virgin Islands	0	0	0	0	0	0	0	0	*	*	*	0	0
Virginia	179	203	221	275	285	438	492	494	373	430	460	456	444
Washington	115	156	161	178	155	144	149	147	157	178	165	144	92
West Virginia	*	*	*	*	*	*	*	6	9	10	10	13	14
Wisconsin	54	51	56	46	45	47	58	37	284	139	190	234	294
Wyoming	*	*	*	*	*	*	*	*	2	9	17	24	30
Total	5,776	6,072	6,236	6,479	6,370	7,045	7,483	8,503	9,124	10,163	10,802	11,144	11,023

* Data withheld to maintain firm confidentiality. Some historical data have been revised.

Only LECs with at least 10,000 lines in a state were required to report through December 2004. Beginning with the June 2005 data all LECs are required to report.

Table 19
UNEs Acquired from Other Carriers
(In Thousands)

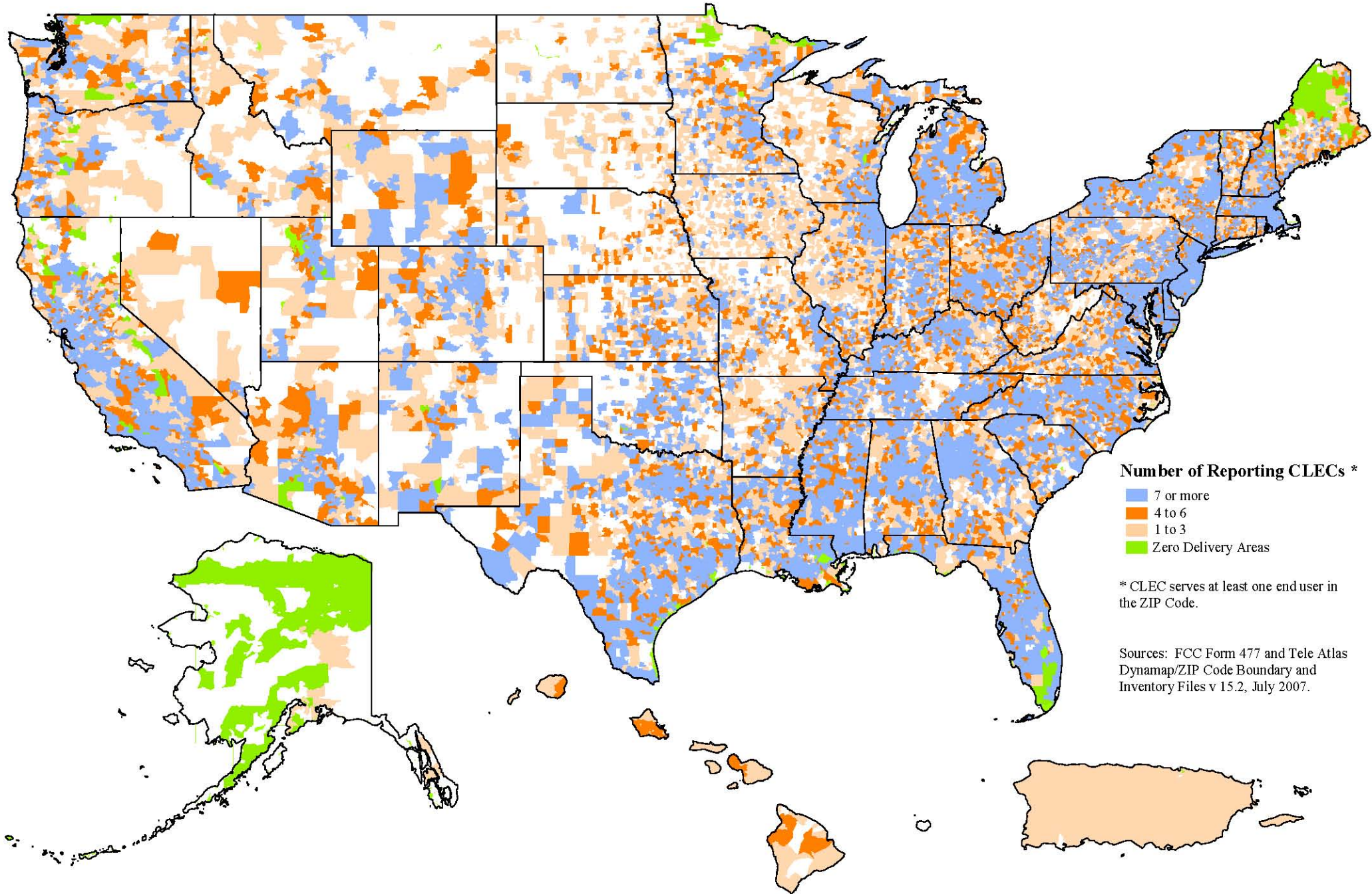
State	2001		2002		2003		2004		2005		2006		2007
	Jun	Dec	Jun	Dec	Jun	Dec	Jun	Dec	Jun	Dec	Jun	Dec	Jun
Alabama	52	*	89	140	173	137	207	201	217	192	211	189	172
Alaska	*	*	*	*	*	*	*	*	*	*	*	*	*
American Samoa	0	0	0	0	0	0	0	0	0	0	0	0	0
Arizona	54	68	80	78	123	234	268	228	171	161	167	169	170
Arkansas	*	*	*	94	*	*	110	98	100	77	84	76	69
California	575	603	746	1,281	1,555	1,852	2,148	2,245	1,999	1,189	960	906	979
Colorado	140	148	161	154	187	222	234	199	243	223	243	204	208
Connecticut	*	7	18	42	47	68	93	101	110	92	86	83	97
Delaware	0	0	*	*	47	34	52	52	101	74	60	60	58
District of Columbia	34	10	42	47	60	63	82	62	74	62	40	42	41
Florida	252	377	482	849	852	871	1,020	1,037	933	936	782	704	647
Georgia	202	326	418	455	536	555	642	566	559	491	482	381	411
Guam	0	0	0	0	0	0	0	0	0	0	0	0	0
Hawaii	*	*	*	*	*	*	*	*	4	5	5	5	5
Idaho	*	*	*	*	*	*	26	25	51	38	38	41	39
Illinois	435	568	734	933	1,024	1,119	1,121	1,016	955	643	614	580	528
Indiana	66	79	122	158	228	326	357	328	332	228	200	182	173
Iowa	*	140	138	144	137	135	144	138	114	105	93	82	77
Kansas	43	103	132	190	206	201	215	208	202	150	146	134	128
Kentucky	*	*	*	26	51	66	112	103	136	119	127	115	105
Louisiana	52	42	46	94	120	110	156	170	220	144	164	150	135
Maine	*	*	*	*	*	46	63	68	84	67	45	46	46
Maryland	50	58	119	174	264	362	390	431	514	336	253	255	243
Massachusetts	88	117	102	161	260	391	416	429	460	340	270	269	279
Michigan	240	628	986	1,154	1,208	1,360	1,388	1,310	1,163	915	829	700	710
Minnesota	219	223	242	308	260	293	310	295	306	348	281	266	280
Mississippi	15	16	18	61	82	72	98	80	118	99	102	90	88
Missouri	61	110	157	204	217	240	322	260	282	208	181	174	174
Montana	*	*	*	*	4	*	*	5	16	15	14	13	13
Nebraska	*	29	30	33	37	41	43	41	21	19	17	*	16
Nevada	107	*	*	92	76	87	66	65	122	114	123	97	99
New Hampshire	12	14	23	46	57	63	81	83	97	80	75	76	79
New Jersey	82	93	110	415	682	925	987	997	1,015	499	312	311	288
New Mexico	*	*	*	*	*	*	47	47	30	23	30	21	22
New York	1,929	2,084	2,044	2,147	2,366	2,652	2,554	2,495	2,455	1,482	931	847	798
North Carolina	97	118	140	191	228	246	334	315	251	304	300	297	298
North Dakota	*	*	*	*	*	17	*	12	43	45	45	46	25
Northern Mariana Isl.	0	0	0	0	0	0	0	0	0	0	0	0	0
Ohio	103	121	278	469	584	736	759	662	652	449	405	372	385
Oklahoma	27	30	45	72	82	69	81	84	113	115	119	118	118
Oregon	31	75	75	99	93	166	191	219	164	264	202	218	229
Pennsylvania	494	516	589	612	666	776	899	907	1,100	878	693	665	699
Puerto Rico	*	*	*	*	*	*	*	*	*	*	*	*	*
Rhode Island	13	26	19	44	54	59	71	66	72	53	47	43	40
South Carolina	49	*	66	98	127	114	133	151	179	169	173	166	160
South Dakota	*	*	*	*	20	29	*	*	71	52	26	24	5
Tennessee	115	128	130	153	180	216	316	261	287	255	295	250	224
Texas	1,186	1,440	1,542	1,468	1,548	1,546	1,596	1,387	1,376	1,030	963	865	838
Utah	46	48	39	49	79	97	141	131	157	122	134	135	135
Vermont	*	*	*	*	*	*	*	*	30	25	19	25	21
Virgin Islands	0	0	0	0	0	0	0	0	*	*	*	0	0
Virginia	146	272	244	288	377	354	415	421	559	396	305	319	325
Washington	59	94	114	118	118	183	256	240	259	249	251	246	259
West Virginia	*	*	*	*	*	*	*	89	94	76	77	78	81
Wisconsin	160	209	273	352	420	499	515	506	306	430	404	387	370
Wyoming	*	*	*	*	*	*	*	*	26	22	19	17	14
Total	7,580	9,332	10,930	13,709	15,728	17,888	19,624	18,961	19,025	14,521	12,547	11,663	11,505

* Data withheld to maintain firm confidentiality. Some data for December 2006 have been revised.

Only LECs with at least 10,000 lines in a state were required to report through December 2004. Beginning with the June 2005 data all LECs are required to report.

Reporting CLECs by 5-Digit Geographical ZIP Code

(As of June 30, 2007)



Number of Reporting CLECs *

- 7 or more
- 4 to 6
- 1 to 3
- Zero Delivery Areas

* CLEC serves at least one end user in the ZIP Code.

Sources: FCC Form 477 and Tele Atlas Dynamap/ZIP Code Boundary and Inventory Files v 15.2, July 2007.

Customer Response

Publication: *Local Telephone Competition: Status as of June 30, 2007*

You can help us provide the best possible information to the public by completing this form and returning it to the Industry Analysis and Technology Division of the FCC's Wireline Competition Bureau.

1. Please check the category that best describes you:

- press
- current telecommunications carrier
- potential telecommunications carrier
- business customer evaluating vendors/service options
- consultant, law firm, lobbyist
- other business customer
- academic/student
- residential customer
- FCC employee
- other federal government employee
- state or local government employee
- Other (please specify)

2. Please rate the report: Excellent Good Satisfactory Poor No opinion

- | | | | | | |
|----------------------|--------------------------|--------------------------|--------------------------|--------------------------|--------------------------|
| Data accuracy | <input type="checkbox"/> | <input type="checkbox"/> | <input type="checkbox"/> | <input type="checkbox"/> | <input type="checkbox"/> |
| Data presentation | <input type="checkbox"/> | <input type="checkbox"/> | <input type="checkbox"/> | <input type="checkbox"/> | <input type="checkbox"/> |
| Timeliness of data | <input type="checkbox"/> | <input type="checkbox"/> | <input type="checkbox"/> | <input type="checkbox"/> | <input type="checkbox"/> |
| Completeness of data | <input type="checkbox"/> | <input type="checkbox"/> | <input type="checkbox"/> | <input type="checkbox"/> | <input type="checkbox"/> |
| Text clarity | <input type="checkbox"/> | <input type="checkbox"/> | <input type="checkbox"/> | <input type="checkbox"/> | <input type="checkbox"/> |
| Completeness of text | <input type="checkbox"/> | <input type="checkbox"/> | <input type="checkbox"/> | <input type="checkbox"/> | <input type="checkbox"/> |

3. Overall, how do you rate this report? Excellent Good Satisfactory Poor No opinion

- | | | | | | |
|--|--------------------------|--------------------------|--------------------------|--------------------------|--------------------------|
| | <input type="checkbox"/> | <input type="checkbox"/> | <input type="checkbox"/> | <input type="checkbox"/> | <input type="checkbox"/> |
|--|--------------------------|--------------------------|--------------------------|--------------------------|--------------------------|

4. How can this report be improved?

5. May we contact you to discuss possible improvements?

Name:

Telephone #:

To discuss the information in this report, contact: 202-418-0940 or for users of TTY equipment, call 202-418-0484		
Fax this response to	or	Mail this response to
202-418-0520		FCC/WCB/IATD Mail Stop 1600 F Washington, DC 20554