

TELEPHONE SUBSCRIBERSHIP IN THE UNITED STATES

(Data through July 2009)

Alexander Belinfante

Industry Analysis and Technology Division
Wireline Competition Bureau
Federal Communications Commission

Released: December 2009



This report is available for reference in the FCC's Reference Information Center, Courtyard Level, 445 12th Street SW, Washington, DC. 20554. Call Best Copy and Printing, Inc. at (202) 488-5300 to purchase a copy. The report can also be downloaded from the Wireline Competition Bureau Statistical Reports Internet site at <<http://www.fcc.gov/wcb/stats>>.

Telephone Subscribership in the United States (Data through July 2009)

Executive Summary

This is the Federal Communications Commission's (FCC's) report on telephone subscribership in the United States, presenting subscribership statistics based on the Current Population Survey (CPS) conducted by the Census Bureau in July 2009.¹ Based on the data gathered in that survey, we estimate that 95.7% of all households in the United States had telephone service. The report also shows subscribership levels by state, income level, race², age, household size, and employment status.

Statistical Findings

In July 2009:

- The telephone subscribership penetration rate in the U.S. was 95.7%, an increase of 0.3% over the rate from July 2008. This is the highest reported rate since the CPS began collecting this data in November 1983.
- The telephone penetration rate for households in income categories below \$15,000 was at or below 93.3%, while the rate for households in income categories over \$50,000 was at least 98.5%.
- Among the states, the penetration rates ranged from a low of 91.3% to a high of 98.7%.
- Penetration rates ranged from 91.5% for households headed by a person under 25 to at least 96.4% for households headed by a person over 55.
- Households with one person had a penetration rate of 93.5%, compared to a rate of 96.8% for households with four or five persons.
- The penetration rate for unemployed adults was 94.6%, while the rate for employed adults was 96.7%.

Background

The number and percentage of households that have telephone service represent the most fundamental measures of the extent of universal service. Continuing analysis of telephone penetration statistics allows us to examine the aggregate effects of Commission actions and industry evolution on households' decisions to maintain, acquire or drop telephone service. This report presents comprehensive data on telephone penetration statistics collected by the Bureau of

-
- 1 The last published report was Industry Analysis and Technology Division, Wireline Competition Bureau, Federal Communications Commission, *Telephone Subscribership in the United States* (August 13, 2009).
 - 2 The racial categories reported in the CPS are white, black, and other. The "other" category (which includes Asians, Native Americans, and anyone else who doesn't consider themselves white or black) is not included in the tables and charts in this report because the sample size is too small. The ethnic category Hispanic, however, is included. Hispanics can be of any race for purposes of the categories reported in the CPS.

the Census under contract with the FCC. Along with telephone penetration statistics for the United States and each of the states from November 1983 to July 2009, data are provided on penetration based on various demographic characteristics.

The most widely used measure of telephone subscribership is the percentage of households with telephone service, sometimes called a measure of telephone penetration. Prior to the 1980s, precise measurements of telephone subscribership received little attention. Traditionally, telephone penetration was measured by dividing the number of residential telephone lines by the number of households. Measures of penetration based on the number of residential lines, however, became subject to a large margin of error as more and more households added second telephone lines and more consumers acquired second homes. By 1980, the traditional measure of penetration (residential lines divided by the number of households) reached 96%,³ while the proportion of households reporting that they had telephones in the 1980 census was 92.9%.

Recognizing the need for more precise periodic measurements of subscribership, the Commission requested that the Census Bureau include questions on telephone availability as part of its CPS, which monitors demographic trends between the decennial censuses. This survey is a staggered panel survey in which the people residing at particular addresses are included in the survey for four consecutive months in one year and the same four months in the following year. Use of the CPS has several advantages: it is conducted every month by an independent and expert agency; the sample is large; and the questions are consistent. Thus, changes in the results can be compared over time with a reasonable degree of confidence.

Unfortunately, the results of the CPS cannot be directly compared with the penetration figures contained in the 1980, 1990, and 2000 decennial censuses. This is due to differences in sampling techniques and survey methodologies and because of differences in the context in which the questions were asked. For example, the 2000 decennial census reported 97.6% of all occupied housing units in the United States had telephone service available, whereas the CPS data showed a penetration rate of 94.6% of households for March 2000. This difference is statistically significant and may indicate that the CPS value may be on the low side and the decennial census value may be on the high side, with the most probable value lying somewhere in between. However, one reason for this difference is that the CPS figures are based on households, while the decennial census figures are based on occupied housing units. The decennial census is in the process of being replaced by the American Community Survey, which is now available on an annual basis.

The specific questions asked in the CPS are: "Does this house, apartment, or mobile home have telephone service from which you can both make and receive calls? Please include cell phones, regular phones, and any other type of telephone."⁴ And, if the answer to the first

3 See Table 6, *Statistics of Communications Common Carriers* (Federal Communications Commission, Year Ended December 31, 1980).

4 The questions are intended to be neutral as to whether the household has wireline or wireless phones. Through November 2004, this question had been worded: "Is there a

question is "no," this is followed up with, "Is there a telephone elsewhere on which people in this household can be called?" If the answer to the first question is "yes," the household is counted as having a telephone "in unit." If the answer to either the first or second question is "yes," the household is counted as having a telephone "available." The "in unit" data are reported in all of the tables and charts in this report. The "available" data are also reported in Tables 3 through 12 and Charts 1 and 8.

Although the survey is conducted every month, not all questions are asked every month. The telephone questions are asked once every four months, in the month that a household is first included in the sample and in the month that the household re-enters the sample a year later. Since the sample is staggered, the reported information for any given month actually reflects responses over the preceding four months. Aggregated summaries of the responses are reported to the Commission, based on the surveys conducted through March, July, and November of each year.

The CPS data are based on a nationwide sample of about 50 to 60 thousand households in the 50 states and the District of Columbia. The CPS does not cover outlying areas that are not states, such as Puerto Rico, Guam, American Samoa, the Virgin Islands, and the Northern Mariana Islands.⁵ Because a sample is used, the estimates are subject to sampling error. For the nationwide totals, changes in telephone penetration between consecutive reports of less than or equal to 0.7% may be due to sampling error and cannot be regarded as statistically significant. As explained below, when comparing the same month in two consecutive years, changes of less than 0.6% are not statistically significant at the 95% confidence level. When comparing annual averages, changes of less than or equal to 0.4% are not statistically significant. The annual averages are the average of the three surveys of the year in question. For individual states or other subgroups of the U.S. population, the amount of sampling variability is much greater, because the sample sizes are smaller. This will require larger changes to yield statistical significance at the same confidence level.

The data in this report are not seasonally adjusted. Because there is a fifty percent overlap in the sample with the sample for the same month in the previous year, there is a high

telephone in this house/apartment?" Because of the increasing number of households that have wireless only, there was some concern that some of these households may not think of their mobile phones when asked if they have a telephone. Consequently, beginning in December 2004, CPS changed its telephone question to the wording given above. The values since March 2005 reflect the new question. While we note there was an apparent drop in the penetration rate between November 2004 and March 2005, at least some of this drop may be attributable to households that responded to the previous form of the question by reporting phones that were not in service.

5 Annual data for Puerto Rico have been available from the American Community Survey starting with 2005. The latest available value for Puerto Rico from that survey is 91.9% for 2008, compared to a national average (for the 50 states and the District of Columbia) of 98.2%.

correlation between values a year apart. However, after accounting for this, there has been no significant systematic seasonal variation.

Results and Statistical Analysis

Census Bureau figures for July 2009, the most recent data available, show that the percentage of households subscribing to telephone service was 95.7%. This is the highest reported penetration rate since the CPS began collecting this data in November 1983. This increase of 0.3% from the 95.4% of July 2008 is not statistically significant.⁶

This report includes figures showing subscribership percentages by state, by the head of the household's age and race, by household size, by income, and, for adult individuals, by labor force status. The July 2009 data show that 96.2% of adult individuals in the civilian non-institutionalized population (CNP) have a telephone in their household. This increase of 0.2% from the 96.0% of July 2008 is not statistically significant.

This report contains twelve tables and eight charts presenting penetration statistics for various geographic and demographic characteristics. The charts and the first two tables present summaries of the information. Tables 3 through 7 present more detailed information. In these tables, only the annual averages are included for the years 1984 through 2006. March, July, and November data for those years are available in previous subscribership reports or Monitoring Reports in CC Docket Nos. 87-339 or 98-202. Tables 8 through 12 provide information necessary to determine the statistical significance of changes in the penetration rates over time.

Table 1 summarizes the telephone penetration for the United States, combining information on the number of households with the penetration rates.

Chart 1 graphically depicts the nationwide penetration rates for households over time.

Table 2 summarizes the telephone penetration rates by state, showing the rates for November 1983 and July 2009, the change between those two months, and an indication as to whether the change is statistically significant. The statistical significance of a change is determined not only by the magnitude of that change, but also by the sizes of the samples used to estimate the change.

Chart 2 depicts the states with July 2009 penetration rates (as shown in Table 2) more than 1% below the national average, within 1% of the national average, or more than 1% above the national average.

Chart 3 depicts changes in household penetration rates by state (as shown in Table 2) between November 1983 and July 2009. States with statistically significant increases (there are no significant decreases) are shown, along with other states with increases or decreases.

6 As noted below (p. 5), changes from year to year for the same month are more reliable than changes between consecutive reporting periods.

Chart 4 depicts the relationship between telephone penetration and household income, using July 2009 penetration rates for all households and for households headed by white, black, and Hispanic persons. It is based on data in Table 4.

Chart 5 depicts the relationship between telephone penetration and household size, using July 2009 penetration rates for all households and for households headed by white, black, and Hispanic persons. It is based on data in Table 5.

Chart 6 depicts the relationship between telephone penetration and the head of the household's age, using July 2009 penetration rates for all households and for households headed by white, black, and Hispanic persons. It is based on data in Table 6.

Chart 7 depicts the relationship between telephone penetration and labor force status for civilian non-institutionalized adults, using July 2009 penetration rates for all adults and for white, black, and Hispanic adults. It is based on data in Table 7.

Chart 8 graphically depicts the nationwide penetration rates for civilian non-institutionalized adults over time. It is also based on data in Table 7.

Table 3 shows the CPS responses for the United States and for each state beginning with November 1983. Because the CPS began collecting this data only in 1983, comparable values are not available prior to November 1983. For each of the surveys, the column headed "Unit" indicates the percentage of households for which there is telephone service in the housing unit. The column headed "Avail" indicates the percentage of households which have telephone service available for incoming and outgoing calls, either in the housing unit or elsewhere (such as at work or at a neighbor's home).

Table 4 shows the nationwide penetration rates for households by income and the race of the head of the household. It shows a strong relationship between income and penetration. Caution should be used in comparing these figures over time, because these income levels are not adjusted for inflation. Thus, the same nominal income level at two points in time will reflect different real incomes in terms of purchasing power.⁷ Also, the income categories have changed over time due to the changing value of the dollar.

Table 5 shows the nationwide penetration rates for households by the size of the household and the race of the head of the household. It shows that penetration is higher for households of 2 to 5 people than it is for single-person households or those with 6 or more people.

Table 6 shows the nationwide penetration rates for households by the age and race of the head of the household. It shows that the penetration rate is lowest for young and non-white households.

7 Our publication *Telephone Penetration by Income by State* (last published August 6, 2009) makes adjustments for inflation, making comparisons over time more appropriate.

Table 7 shows the nationwide penetration rates for all persons that are at least 15 years old in the civilian non-institutionalized population by their race and employment status. Since this table is for individual adults rather than households, the total penetration rates are different from those in the previous tables. It shows that penetration is lowest among the unemployed.

Tables 8 through 12 present the critical values at the 95% confidence level for testing the statistical significance of changes in penetration rates over time in the earlier tables.⁸ These critical values are relevant because changes less than or equal to the values shown are likely to be due to sampling error and thus cannot be regarded as demonstrating that a change in telephone penetration has occurred. In some cases, these critical values are very large because the sample sizes are very small for these subcategories, rendering the changes in estimated penetration rates unreliable. Because there is an overlap of half of the sample from year to year, but no overlap in the sample between surveys that are four months apart, annual changes are less subject to variations in sampling error. Consequently, the critical values should be multiplied by 0.768 when making a comparison for the same month in two consecutive years. When comparing the annual averages, the critical values should be multiplied by 0.55, since these averages are based on three surveys and hence have a lower standard error. When comparing annual averages of two consecutive years, the critical values should be multiplied by .42, taking into account both of the above factors.

8 At the end of 2007, the Census Bureau revised their variability estimates upward, probably reflecting the increased variability in the penetration rates in recent years.

Table 1
Household Telephone Subscribership in the United States

Date	Households (millions)	Households with Telephones (millions)	Percentage with Telephones	Households without Telephones (millions)	Percentage without Telephones
November 1983	85.8	78.4	91.4%	7.4	8.6%
March 1984	86.0	78.9	91.8%	7.1	8.2%
July 1984	86.6	79.3	91.6%	7.3	8.4%
November 1984	87.4	79.9	91.4%	7.5	8.6%
March 1985	87.4	80.2	91.8%	7.2	8.2%
July 1985	88.2	81.0	91.8%	7.2	8.2%
November 1985	88.8	81.6	91.9%	7.2	8.1%
March 1986	89.0	82.1	92.2%	6.9	7.8%
July 1986	89.5	82.5	92.2%	7.0	7.8%
November 1986	89.9	83.1	92.4%	6.8	7.6%
March 1987	90.2	83.4	92.5%	6.8	7.5%
July 1987	90.7	83.7	92.3%	7.0	7.7%
November 1987	91.3	84.3	92.3%	7.0	7.7%
March 1988	91.8	85.3	92.9%	6.5	7.1%
July 1988	92.4	85.7	92.8%	6.7	7.2%
November 1988	92.6	85.7	92.5%	6.9	7.5%
March 1989	93.6	87.0	93.0%	6.6	7.0%
July 1989	93.8	87.5	93.3%	6.3	6.7%
November 1989	93.9	87.3	93.0%	6.6	7.0%
March 1990	94.2	87.9	93.3%	6.3	6.7%
July 1990	94.8	88.4	93.3%	6.4	6.7%
November 1990	94.7	88.4	93.3%	6.3	6.7%
March 1991	95.3	89.2	93.6%	6.1	6.4%
July 1991	95.5	89.1	93.3%	6.4	6.7%
November 1991	95.7	89.4	93.4%	6.3	6.6%
March 1992	96.6	90.7	93.9%	5.9	6.1%
July 1992	96.6	90.6	93.8%	6.0	6.2%
November 1992	97.0	91.0	93.8%	6.0	6.2%
March 1993	97.3	91.6	94.2%	5.7	5.8%
July 1993	97.9	92.2	94.2%	5.7	5.8%
November 1993	98.8	93.0	94.2%	5.8	5.8%
March 1994	98.1	92.1	93.9%	6.0	6.1%
July 1994	98.6	92.4	93.7%	6.2	6.3%
November 1994	99.8	93.7	93.8%	6.2	6.2%
March 1995	99.9	93.8	93.9%	6.1	6.1%
July 1995	100.0	94.0	94.0%	6.0	6.0%
November 1995	100.4	94.2	93.9%	6.2	6.1%
March 1996	100.6	94.4	93.8%	6.2	6.2%
July 1996	101.2	95.0	93.9%	6.1	6.1%
November 1996	101.3	95.1	93.9%	6.2	6.1%
March 1997	102.0	95.8	93.9%	6.2	6.1%
July 1997	102.3	96.1	93.9%	6.2	6.1%
November 1997	102.8	96.5	93.8%	6.3	6.2%
March 1998	103.4	97.4	94.1%	6.1	5.9%
July 1998	103.4	97.3	94.1%	6.1	5.9%
November 1998	104.1	98.0	94.2%	6.1	5.8%
March 1999	104.8	98.5	94.0%	6.3	6.0%
July 1999	105.1	99.2	94.4%	5.9	5.6%
November 1999	105.4	99.1	94.1%	6.3	5.9%
March 2000	105.3	99.6	94.6%	5.7	5.4%
July 2000	105.8	99.8	94.4%	5.9	5.6%
November 2000	106.5	100.2	94.1%	6.3	5.9%
March 2001	107.0	101.1	94.6%	5.8	5.4%
July 2001	106.9	101.7	95.1%	5.2	4.9%
November 2001	107.7	102.2	94.9%	5.5	5.1%
March 2002	108.3	103.4	95.5%	4.8	4.5%
July 2002	108.5	103.2	95.1%	5.3	4.9%
November 2002	109.0	104.0	95.3%	5.1	4.7%
March 2003	112.1	107.1	95.5%	5.0	4.5%
July 2003	112.1	106.8	95.2%	5.3	4.8%
November 2003	113.1	107.1	94.7%	6.0	5.3%
March 2004	112.9	106.4	94.2%	6.5	5.8%
July 2004	113.5	106.5	93.8%	7.1	6.2%
November 2004	113.8	106.4	93.5%	7.4	6.5%
March 2005	114.5	105.8	92.4%	8.7	7.6%
July 2005	114.4	107.5	94.0%	6.8	6.0%
November 2005	115.2	107.0	92.9%	8.2	7.1%
March 2006	115.5	107.2	92.8%	8.4	7.2%
July 2006	116.2	109.9	94.6%	6.3	5.4%
November 2006	116.4	108.8	93.4%	7.6	6.6%
March 2007	117.1	110.8	94.6%	6.4	5.4%
July 2007	117.7	111.7	95.0%	5.9	5.0%
November 2007	118.2	112.2	94.9%	6.0	5.1%
March 2008	117.8	112.2	95.2%	5.6	4.8%
July 2008	118.0	112.6	95.4%	5.5	4.6%
November 2008	118.6	112.7	95.0%	5.9	5.0%
March 2009	118.4	113.2	95.6%	5.2	4.4%
July 2009	118.4	113.3	95.7%	5.1	4.3%

Note: Details may not appear to add to totals due to rounding.

Chart 1

Telephone Penetration

Households

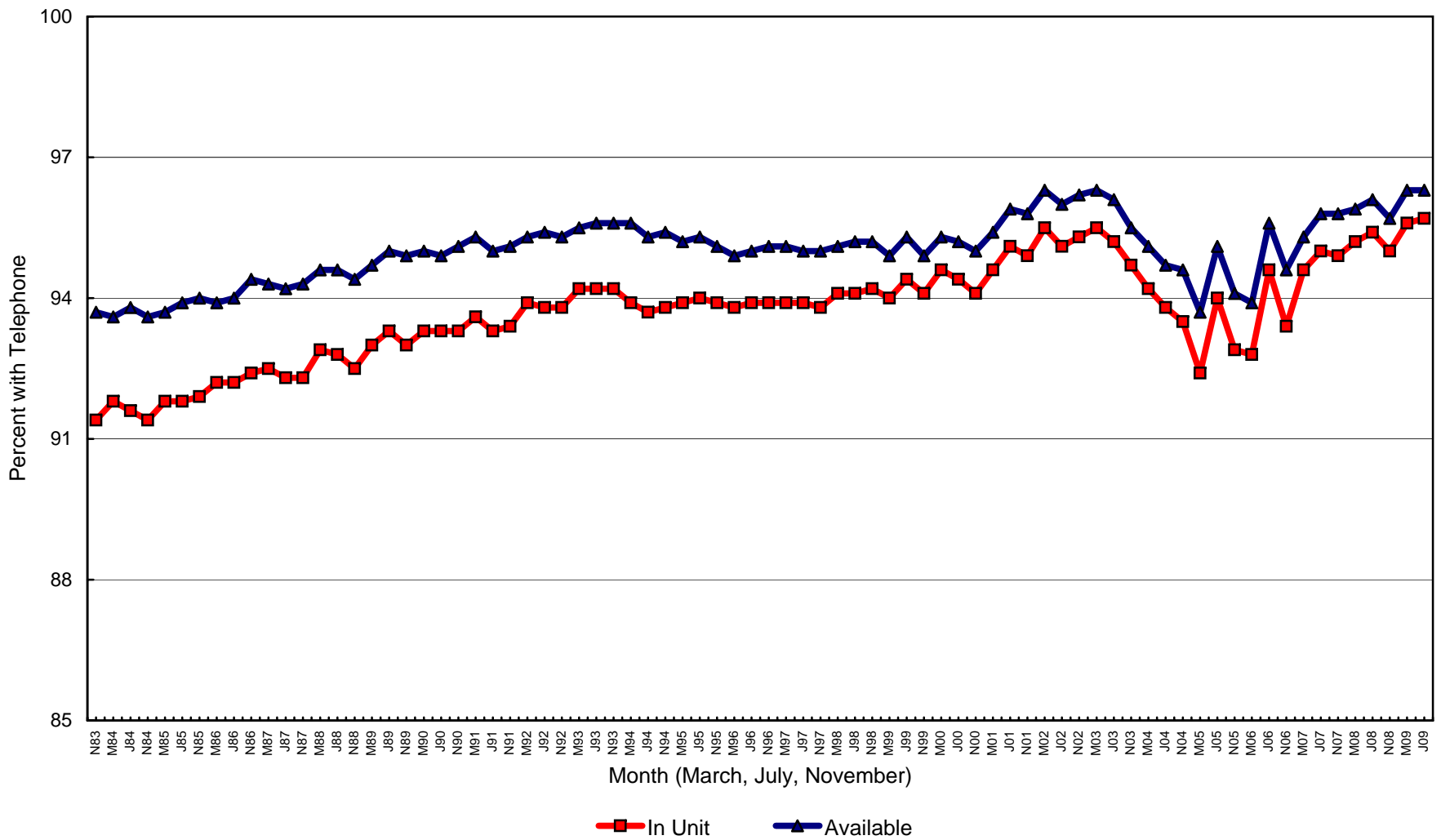


Table 2
Telephone Penetration by State
(Percentage of Households with Telephone Service)

State	November 1983	July 2009	Change
Alabama	87.9 %	95.3 %	7.3 % *
Alaska	83.8	95.9	12.1 *
Arizona	88.8	93.5	4.7
Arkansas	88.2	92.8	4.7
California	91.7	96.6	4.9 *
Colorado	94.4	97.0	2.6
Connecticut	95.5	98.5	3.0
Delaware	95.0	96.5	1.5
District of Columbia	94.7	91.3	-3.4
Florida	85.5	92.9	7.4 *
Georgia	88.9	93.8	4.9
Hawaii	94.6	98.7	4.1
Idaho	89.5	96.3	6.8 *
Illinois	95.0	95.9	0.9
Indiana	90.3	92.3	2.0
Iowa	95.4	98.3	2.9
Kansas	94.9	97.1	2.2
Kentucky	86.9	94.8	7.9 *
Louisiana	88.9	94.9	6.0
Maine	90.7	97.1	6.3 *
Maryland	96.3	95.0	-1.3
Massachusetts	94.3	98.2	3.9
Michigan	93.8	97.1	3.3
Minnesota	96.4	98.1	1.7
Mississippi	82.4	94.1	11.8 *
Missouri	92.1	95.1	3.1
Montana	92.8	92.3	-0.5
Nebraska	94.0	95.9	1.9
Nevada	89.4	94.4	5.0 *
New Hampshire	95.0	98.0	3.1
New Jersey	94.1	95.1	0.9
New Mexico	85.3	95.3	9.9 *
New York	90.8	95.4	4.5 *
North Carolina	89.3	95.5	6.2 *
North Dakota	95.1	98.3	3.2
Ohio	92.2	96.6	4.4 *
Oklahoma	91.5	97.3	5.8 *
Oregon	91.2	97.3	6.1 *
Pennsylvania	95.1	97.9	2.8
Rhode Island	93.3	97.4	4.1
South Carolina	81.8	95.0	13.2 *
South Dakota	92.7	97.6	4.9 *
Tennessee	87.6	93.1	5.5
Texas	89.0	95.2	6.2 *
Utah	90.3	96.7	6.4 *
Vermont	92.7	98.2	5.5 *
Virginia	93.1	96.4	3.3
Washington	92.5	97.6	5.2
West Virginia	88.1	95.2	7.1 *
Wisconsin	94.8	97.0	2.2
Wyoming	89.7	96.3	6.6 *
Total United States	91.4	95.7	4.3 *

* Increase is statistically significant at the 95% confidence level.
Differences may not appear to equal changes due to rounding.

Chart 2

July 2009 Telephone Penetration

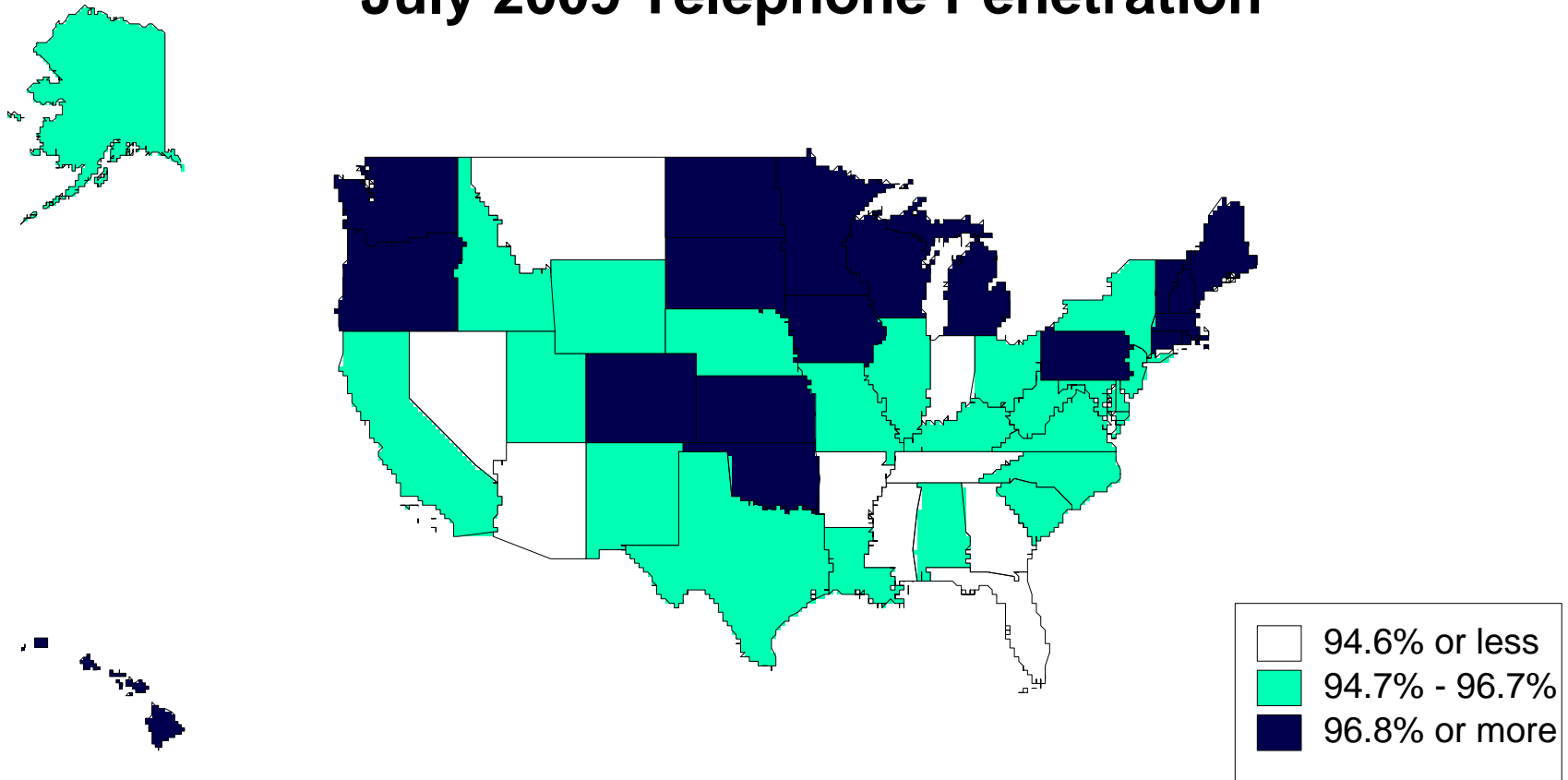


Chart 3

11/83 - 7/09 Penetration Changes

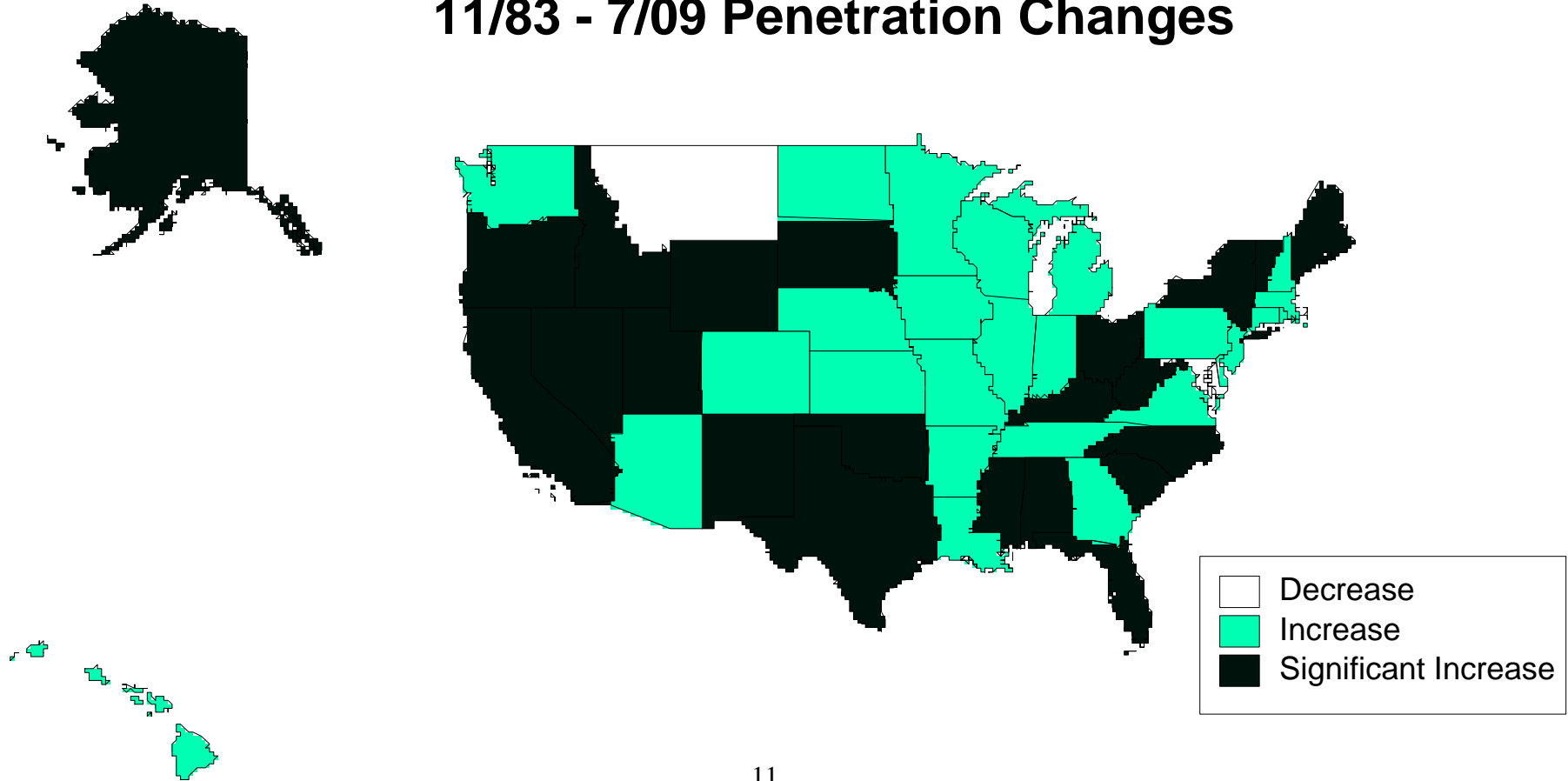


Chart 4

Telephone Penetration by Income Level
July 2009

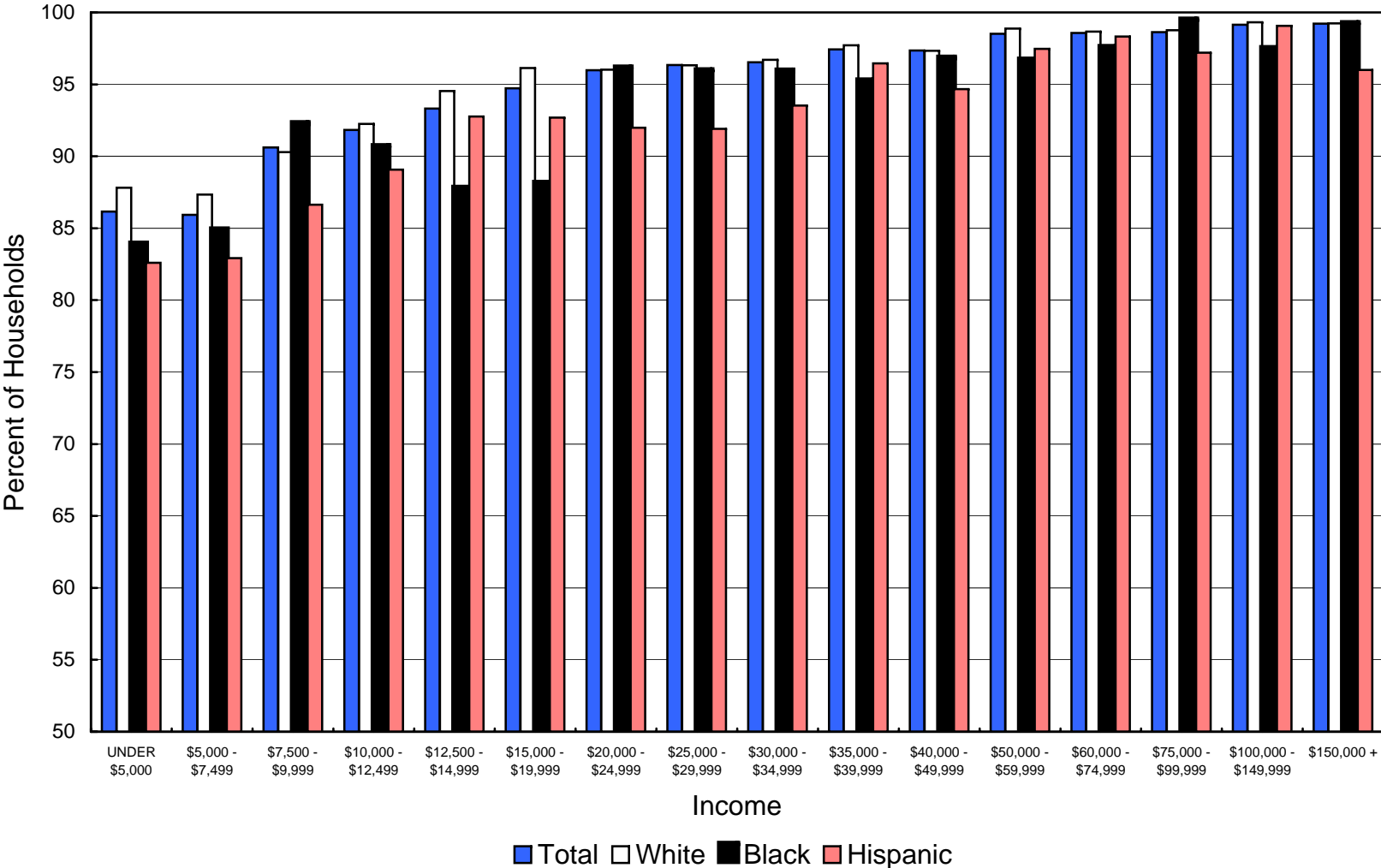


Chart 5

Telephone Penetration by Household Size
July 2009

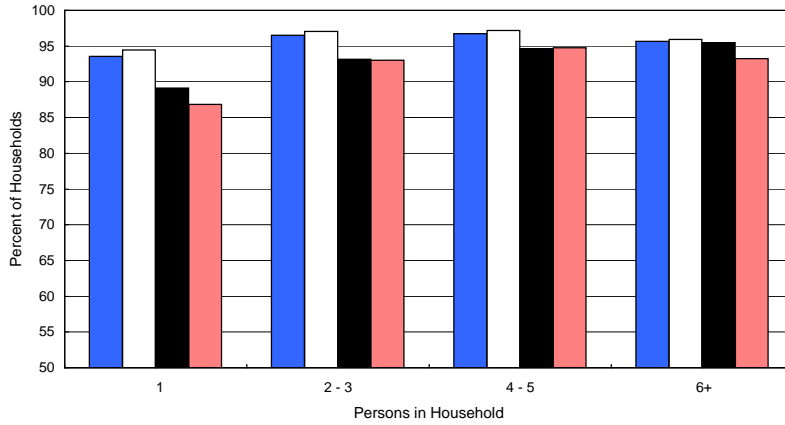


Chart 6

Telephone Penetration by Householder's Age
July 2009

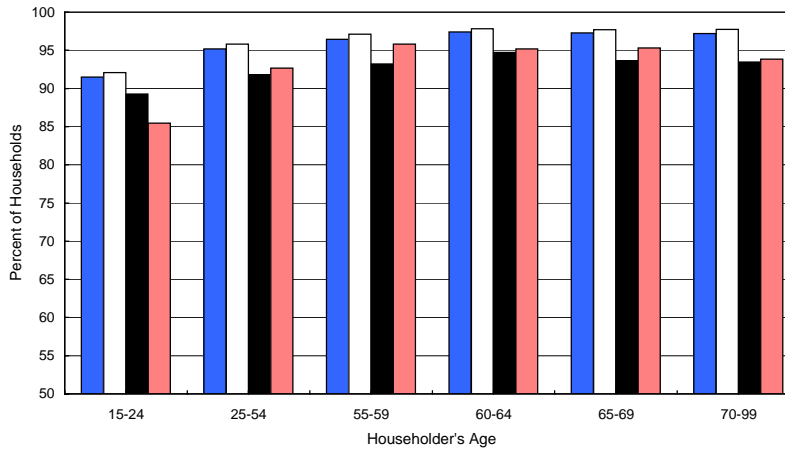


Chart 7

Telephone Penetration by Labor Force Status
July 2009

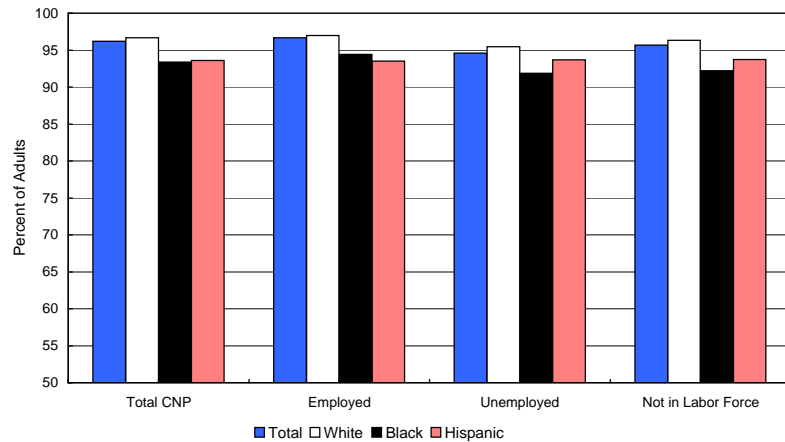


Chart 8

Telephone Penetration

Civilian Noninstitutionalized Adults

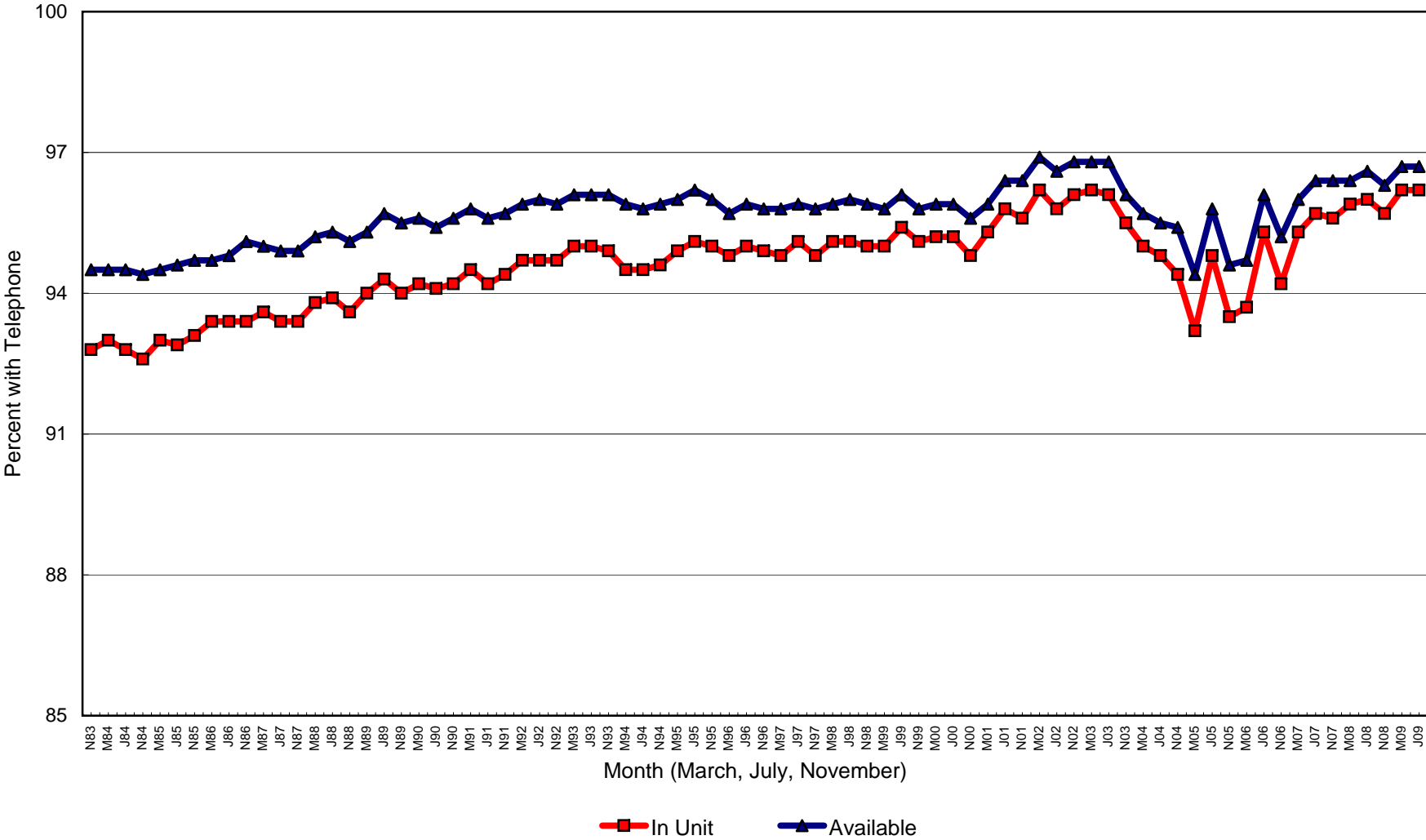


Table 3
Percentage of Households with a Telephone by State

	1983		1984		1985		1986	
	NOVEMBER		ANNUAL AVERAGE		ANNUAL AVERAGE		ANNUAL AVERAGE	
	Unit	Avail	Unit	Avail	Unit	Avail	Unit	Avail
UNITED STATES	91.4	93.7	91.6	93.7	91.8	93.9	92.3	94.1
ALABAMA	87.9	90.2	88.4	90.5	89.1	91.0	88.7	90.4
ALASKA	83.8	88.8	86.5	89.0	87.1	89.5	86.4	88.9
ARIZONA	88.8	90.7	86.9	89.4	87.3	89.6	89.4	90.9
ARKANSAS	88.2	91.4	86.6	90.6	85.9	89.9	86.4	90.4
CALIFORNIA	91.7	93.5	92.5	93.8	92.9	94.1	93.0	94.0
COLORADO	94.4	96.5	93.2	95.4	94.3	96.2	94.1	96.0
CONNECTICUT	95.5	98.4	95.5	97.0	96.2	97.6	97.0	97.9
DELAWARE	95.0	96.6	94.3	95.7	94.8	96.2	94.7	96.3
DISTRICT OF COLUMBIA	94.7	95.6	94.9	96.3	93.6	95.2	92.2	94.0
FLORIDA	85.5	89.9	88.7	91.3	89.6	91.7	90.0	92.5
GEORGIA	88.9	92.1	86.2	89.1	87.6	89.7	88.4	91.0
HAWAII	94.6	96.4	93.5	94.9	93.0	95.0	92.2	94.4
IDAHO	89.5	92.2	90.7	91.7	91.8	93.1	91.5	93.1
ILLINOIS	95.0	95.9	94.2	95.8	93.7	95.3	93.6	95.2
INDIANA	90.3	93.5	91.6	93.6	92.3	94.7	92.2	94.3
IOWA	95.4	97.2	96.2	97.4	95.1	96.4	95.7	96.5
KANSAS	94.9	96.7	94.3	95.8	94.4	96.4	94.6	96.1
KENTUCKY	86.9	90.9	88.1	91.0	87.4	91.1	86.2	90.6
LOUISIANA	88.9	93.3	89.7	92.7	90.3	93.6	88.7	91.9
MAINE	90.7	93.1	93.4	95.3	94.0	95.6	93.4	95.4
MARYLAND	96.3	96.7	95.7	96.5	95.5	96.7	95.7	96.7
MASSACHUSETTS	94.3	95.9	95.9	96.9	95.2	96.3	96.4	97.1
MICHIGAN	93.8	94.9	92.8	94.5	92.9	94.2	93.4	94.5
MINNESOTA	96.4	97.5	95.8	97.1	96.4	97.4	96.2	97.2
MISSISSIPPI	82.4	89.1	82.4	87.5	80.9	87.6	80.1	87.3
MISSOURI	92.1	94.1	91.5	93.7	92.5	94.8	93.4	94.9
MONTANA	92.8	94.5	91.0	94.0	91.4	93.9	90.9	93.7
NEBRASKA	94.0	95.3	95.7	96.8	95.3	96.6	95.6	96.8
NEVADA	89.4	91.9	90.4	92.8	91.8	93.8	92.4	93.7
NEW HAMPSHIRE	95.0	96.9	94.3	95.8	93.2	94.6	94.0	95.0
NEW JERSEY	94.1	95.1	94.8	96.1	94.9	96.2	94.9	96.1
NEW MEXICO	85.3	90.9	82.0	87.0	84.1	88.2	85.1	89.1
NEW YORK	90.8	92.2	91.8	93.6	92.1	93.6	93.2	94.3
NORTH CAROLINA	89.3	92.9	88.3	91.9	89.4	92.4	90.2	92.5
NORTH DAKOTA	95.1	97.3	94.6	96.8	95.3	96.7	96.1	97.0
OHIO	92.2	93.9	92.4	94.4	92.2	94.5	93.1	94.4
OKLAHOMA	91.5	93.7	90.3	92.5	88.8	91.7	90.4	93.0
OREGON	91.2	93.5	90.6	92.3	90.3	92.1	92.7	94.3
PENNSYLVANIA	95.1	97.1	94.9	96.5	95.3	96.6	96.3	97.4
RHODE ISLAND	93.3	94.6	93.6	94.6	94.0	95.1	95.9	96.8
SOUTH CAROLINA	81.8	84.9	83.7	87.7	86.8	90.5	86.3	90.6
SOUTH DAKOTA	92.7	95.0	93.2	94.9	92.6	94.5	92.6	94.2
TENNESSEE	87.6	92.6	88.5	92.0	89.3	92.6	89.6	93.6
TEXAS	89.0	92.6	88.4	91.6	88.1	91.6	88.9	91.9
UTAH	90.3	92.2	92.5	94.2	93.9	95.1	93.0	93.9
VERMONT	92.7	94.3	92.3	94.0	92.9	94.1	93.8	95.6
VIRGINIA	93.1	94.7	93.1	95.1	91.7	93.8	92.1	94.1
WASHINGTON	92.5	93.7	93.0	94.4	94.7	96.2	94.6	96.3
WEST VIRGINIA	88.1	91.1	87.7	91.8	87.6	91.7	88.2	91.9
WISCONSIN	94.8	96.1	95.2	96.6	94.1	95.4	95.1	95.9
WYOMING	89.7	93.3	89.9	92.8	93.4	94.9	92.1	95.1

Table 3
Percentage of Households with a Telephone by State

	1987		1988		1989		1990	
	ANNUAL AVERAGE		ANNUAL AVERAGE		ANNUAL AVERAGE		ANNUAL AVERAGE	
	Unit	Avail	Unit	Avail	Unit	Avail	Unit	Avail
UNITED STATES	92.4	94.2	92.7	94.5	93.1	94.9	93.3	95.0
ALABAMA	87.5	89.6	87.3	89.6	89.0	91.3	89.5	91.1
ALASKA	87.8	90.2	87.6	89.9	86.8	89.9	89.3	92.6
ARIZONA	88.6	90.7	90.6	92.3	91.6	93.2	93.0	95.1
ARKANSAS	86.3	90.7	86.1	90.2	87.5	91.0	88.7	91.9
CALIFORNIA	93.8	95.0	94.4	95.5	94.9	96.0	94.6	95.5
COLORADO	92.9	95.5	93.8	95.4	94.6	96.0	94.7	96.3
CONNECTICUT	97.0	98.0	96.3	98.9	98.1	98.5	97.1	97.7
DELAWARE	96.5	97.3	97.0	97.9	96.6	97.5	96.0	97.1
DISTRICT OF COLUMBIA	92.4	94.2	94.6	95.9	92.7	94.8	91.4	93.2
FLORIDA	91.7	93.8	92.7	94.5	92.9	94.5	93.0	94.9
GEORGIA	88.7	91.3	90.1	92.4	90.2	92.9	90.9	93.4
HAWAII	94.2	96.6	94.5	96.3	95.1	96.9	95.3	96.8
IDAHO	91.1	92.5	92.2	93.3	92.5	93.6	92.8	94.1
ILLINOIS	93.7	95.2	94.2	95.6	93.9	95.4	94.3	95.7
INDIANA	91.2	93.2	92.3	94.9	93.2	95.9	92.8	95.9
IOWA	95.1	96.3	95.4	96.9	96.3	97.5	96.1	96.9
KANSAS	95.2	96.6	94.4	95.7	94.4	95.8	95.4	96.5
KENTUCKY	86.5	90.6	87.5	90.9	88.9	92.7	89.1	93.3
LOUISIANA	87.5	90.8	87.3	91.1	88.6	91.3	89.4	92.0
MAINE	93.5	95.2	94.2	95.9	95.3	96.4	95.7	97.6
MARYLAND	95.4	96.6	95.9	97.2	95.0	96.6	95.4	96.7
MASSACHUSETTS	96.4	97.0	96.9	97.3	97.1	97.8	96.6	97.4
MICHIGAN	93.7	94.8	93.9	95.0	93.7	94.9	94.1	95.5
MINNESOTA	96.0	97.4	97.2	98.4	96.8	97.8	96.9	98.1
MISSISSIPPI	81.5	86.3	83.3	88.6	85.5	90.3	87.0	90.9
MISSOURI	93.0	95.3	93.5	95.6	91.0	93.4	92.0	95.3
MONTANA	90.9	93.9	91.7	94.2	91.7	94.3	92.0	94.2
NEBRASKA	94.6	96.1	95.4	96.1	95.2	96.3	96.2	97.1
NEVADA	92.4	93.7	92.4	93.4	92.7	93.3	92.6	93.6
NEW HAMPSHIRE	94.1	96.2	95.2	96.1	95.4	97.1	95.0	96.5
NEW JERSEY	95.0	96.3	94.4	95.9	94.8	96.1	94.7	95.9
NEW MEXICO	86.0	89.3	85.7	89.1	85.8	89.6	85.8	89.5
NEW YORK	92.7	94.2	92.4	94.0	92.3	94.0	91.1	92.8
NORTH CAROLINA	89.2	91.7	90.4	92.8	91.9	94.1	91.9	94.2
NORTH DAKOTA	96.8	97.4	96.8	97.5	97.0	98.0	97.0	97.9
OHIO	93.4	94.7	94.4	95.2	94.6	95.5	95.2	96.3
OKLAHOMA	88.7	91.8	88.9	91.6	88.2	91.2	89.5	92.7
OREGON	93.3	94.8	92.0	93.5	92.3	93.9	94.5	95.9
PENNSYLVANIA	96.4	97.3	96.2	97.1	97.0	97.5	96.9	97.6
RHODE ISLAND	95.2	96.3	95.4	96.5	95.4	96.3	95.6	96.5
SOUTH CAROLINA	87.7	90.6	88.5	91.4	87.8	90.8	90.2	93.2
SOUTH DAKOTA	92.8	95.0	92.9	95.4	93.3	95.0	93.4	95.3
TENNESSEE	89.2	92.6	90.3	93.5	91.9	95.1	91.6	94.1
TEXAS	89.5	92.2	88.5	91.3	88.8	91.6	89.4	92.0
UTAH	92.3	94.6	92.5	94.5	95.9	96.5	95.6	96.3
VERMONT	95.3	96.9	95.6	96.8	93.9	95.7	94.9	96.9
VIRGINIA	92.5	94.6	92.9	95.5	93.2	95.7	93.0	94.9
WASHINGTON	94.3	96.4	94.3	95.7	96.4	97.3	97.1	97.7
WEST VIRGINIA	87.8	91.5	87.3	91.4	86.8	90.3	87.6	91.7
WISCONSIN	96.4	97.1	97.0	98.0	97.3	98.4	96.9	97.7
WYOMING	92.3	94.1	93.0	94.4	93.6	95.5	94.1	95.9

Table 3
Percentage of Households with a Telephone by State

	1991		1992		1993		1994	
	ANNUAL AVERAGE		ANNUAL AVERAGE		ANNUAL AVERAGE		ANNUAL AVERAGE	
	Unit	Avail	Unit	Avail	Unit	Avail	Unit	Avail
UNITED STATES	93.4	95.1	93.8	95.3	94.2	95.6	93.8	95.4
ALABAMA	91.4	93.3	90.8	93.2	91.9	94.3	91.3	94.3
ALASKA	90.8	93.5	91.7	94.4	89.9	93.8	91.8	94.6
ARIZONA	93.4	94.9	93.3	94.7	93.3	94.4	93.9	95.3
ARKANSAS	87.6	91.4	87.3	91.0	87.8	91.0	90.2	93.5
CALIFORNIA	95.0	95.9	95.6	96.5	95.8	96.7	94.8	95.7
COLORADO	95.4	97.0	95.5	96.3	96.1	96.5	96.7	97.7
CONNECTICUT	96.2	97.3	96.6	97.3	96.7	97.5	96.5	97.5
DELAWARE	96.4	97.5	96.5	97.8	96.5	96.8	95.5	97.1
DISTRICT OF COLUMBIA	90.9	92.6	88.7	90.5	90.2	91.7	90.0	91.2
FLORIDA	93.3	95.0	93.5	95.1	93.8	95.1	93.5	94.9
GEORGIA	89.9	91.7	90.2	91.9	93.2	94.2	91.1	93.2
HAWAII	95.1	96.4	95.3	96.8	94.4	96.3	94.3	96.1
IDAHO	92.0	93.6	93.0	94.7	94.4	95.7	94.7	96.2
ILLINOIS	93.8	95.6	93.8	95.5	93.6	95.3	93.6	95.2
INDIANA	92.2	94.6	91.9	93.2	93.7	95.1	93.6	94.8
IOWA	95.6	97.4	95.4	97.4	96.4	97.4	96.8	98.0
KANSAS	94.5	95.7	95.2	96.6	95.6	96.3	94.7	96.2
KENTUCKY	88.1	92.9	89.6	92.6	89.8	93.1	91.2	93.8
LOUISIANA	91.1	93.9	91.7	93.9	90.4	92.2	91.4	93.9
MAINE	94.4	96.6	93.2	95.3	96.0	98.1	96.0	97.8
MARYLAND	96.3	97.2	96.0	97.4	96.7	97.9	95.6	96.6
MASSACHUSETTS	96.4	97.4	96.8	97.5	96.9	97.9	96.5	97.1
MICHIGAN	94.1	95.5	94.4	95.5	95.6	96.5	95.0	96.6
MINNESOTA	97.1	97.9	96.7	98.1	96.1	97.3	95.6	97.2
MISSISSIPPI	86.0	90.9	86.3	90.4	87.2	90.6	88.6	92.5
MISSOURI	93.6	95.2	94.0	96.0	93.1	95.3	93.8	96.0
MONTANA	92.5	94.4	93.2	95.7	94.6	96.3	93.9	95.5
NEBRASKA	95.9	96.4	96.4	97.1	96.6	97.2	96.7	98.0
NEVADA	93.3	94.5	93.7	94.6	95.4	95.9	93.0	93.5
NEW HAMPSHIRE	96.2	97.5	95.4	96.4	96.0	96.9	96.4	97.3
NEW JERSEY	93.6	95.2	94.4	95.3	94.3	95.1	92.9	94.1
NEW MEXICO	87.1	89.9	88.4	90.9	90.2	93.3	88.3	91.2
NEW YORK	91.9	93.4	93.4	94.5	93.5	94.8	93.1	94.4
NORTH CAROLINA	91.8	94.2	92.5	94.5	92.7	94.6	92.6	95.2
NORTH DAKOTA	96.3	97.6	95.8	97.1	97.1	98.0	96.5	97.7
OHIO	94.5	95.8	94.6	95.6	94.9	96.0	94.8	96.0
OKLAHOMA	89.3	91.9	90.9	93.1	92.1	94.0	91.8	93.6
OREGON	94.7	95.4	93.9	94.7	94.8	95.7	96.1	97.0
PENNSYLVANIA	96.8	97.8	96.9	97.7	97.3	98.0	97.0	98.0
RHODE ISLAND	94.7	96.3	94.8	96.0	95.5	96.7	95.9	97.3
SOUTH CAROLINA	90.0	93.3	89.2	92.9	89.8	91.9	89.4	92.3
SOUTH DAKOTA	93.7	95.7	94.1	95.6	93.7	95.4	94.7	96.1
TENNESSEE	92.2	94.6	93.1	95.2	92.0	93.9	93.1	95.6
TEXAS	91.1	93.6	91.5	94.2	91.6	94.3	90.8	93.2
UTAH	96.2	97.0	95.9	96.5	96.0	96.8	95.7	97.1
VERMONT	94.4	96.5	94.2	95.6	94.6	95.9	94.6	96.3
VIRGINIA	92.6	94.7	94.8	96.4	94.3	95.9	94.8	96.7
WASHINGTON	96.8	97.3	96.0	96.9	96.8	98.0	96.0	97.2
WEST VIRGINIA	89.0	93.0	89.3	92.6	90.6	93.6	90.8	94.2
WISCONSIN	96.5	97.5	97.0	97.7	96.9	97.6	96.1	97.6
WYOMING	94.6	96.3	92.7	94.9	93.9	95.7	93.5	95.5

Table 3
Percentage of Households with a Telephone by State

	1995		1996		1997		1998	
	ANNUAL AVERAGE		ANNUAL AVERAGE		ANNUAL AVERAGE		ANNUAL AVERAGE	
	Unit	Avail	Unit	Avail	Unit	Avail	Unit	Avail
UNITED STATES	93.9	95.2	93.9	95.0	93.9	95.0	94.1	95.2
ALABAMA	92.2	94.0	92.2	93.9	92.3	93.6	93.3	94.4
ALASKA	93.6	95.6	94.4	95.4	94.5	96.4	94.0	96.0
ARIZONA	93.8	95.1	93.1	94.1	91.6	93.2	91.9	93.0
ARKANSAS	89.4	92.5	86.9	89.7	89.8	91.8	88.0	89.8
CALIFORNIA	94.5	95.3	95.0	95.6	94.3	94.9	95.2	95.9
COLORADO	96.6	97.2	95.5	96.4	95.9	97.3	95.0	96.0
CONNECTICUT	96.9	98.0	97.5	98.2	94.2	94.8	95.5	96.2
DELAWARE	96.2	96.8	96.1	97.1	95.7	96.7	96.7	97.0
DISTRICT OF COLUMBIA	90.9	92.3	93.0	94.2	90.8	92.3	91.0	92.3
FLORIDA	93.9	94.8	93.1	94.2	92.8	94.0	92.6	93.5
GEORGIA	90.0	91.8	89.7	91.1	92.0	93.0	91.4	92.5
HAWAII	94.7	96.0	94.8	95.9	94.5	95.6	95.4	96.3
IDAHO	95.1	96.1	92.9	94.3	94.0	94.7	93.3	94.2
ILLINOIS	93.6	95.0	93.0	94.2	92.2	93.7	92.8	93.9
INDIANA	94.4	95.9	93.7	95.1	93.8	95.1	94.4	95.7
IOWA	96.4	97.6	96.6	96.9	96.7	97.5	96.7	97.5
KANSAS	93.9	95.0	93.9	95.2	94.0	95.2	94.3	95.3
KENTUCKY	92.1	94.2	92.3	93.3	93.2	94.3	93.3	95.1
LOUISIANA	92.6	95.3	91.1	93.3	91.0	93.5	92.3	93.3
MAINE	95.7	96.9	96.5	97.8	96.1	97.3	96.9	97.9
MARYLAND	96.4	96.8	96.7	97.2	95.7	96.3	96.5	97.0
MASSACHUSETTS	95.9	96.7	95.7	96.7	95.4	96.3	94.5	95.4
MICHIGAN	95.2	96.0	95.0	95.6	94.3	95.2	95.0	96.0
MINNESOTA	97.3	98.1	97.1	98.0	96.9	98.0	97.8	98.3
MISSISSIPPI	86.5	91.1	87.5	91.6	89.2	93.2	89.5	92.0
MISSOURI	94.4	95.7	95.3	96.7	95.0	96.2	94.6	95.9
MONTANA	94.2	95.3	94.3	95.5	93.7	94.8	94.1	95.0
NEBRASKA	97.1	97.8	96.0	96.9	97.1	97.8	96.2	97.0
NEVADA	92.6	93.6	93.5	94.1	94.1	94.4	92.3	93.3
NEW HAMPSHIRE	96.2	97.2	96.1	96.9	96.5	97.4	95.5	96.6
NEW JERSEY	92.3	93.2	93.6	94.8	94.9	96.0	94.5	95.3
NEW MEXICO	86.4	88.8	86.2	88.6	88.1	90.8	88.2	91.3
NEW YORK	92.9	93.9	93.4	94.3	94.2	95.1	94.8	95.7
NORTH CAROLINA	93.4	95.1	93.5	95.1	93.1	94.2	93.1	94.0
NORTH DAKOTA	97.2	97.9	96.3	96.7	95.8	97.0	96.8	97.5
OHIO	94.0	95.0	94.5	95.6	94.6	95.3	95.6	96.3
OKLAHOMA	91.5	92.9	91.3	92.6	91.4	93.1	90.6	91.7
OREGON	96.4	96.9	96.0	96.8	95.6	96.3	96.0	97.2
PENNSYLVANIA	96.8	97.5	96.9	97.5	97.1	97.6	96.8	97.4
RHODE ISLAND	96.0	97.4	95.7	96.3	94.5	95.6	95.6	96.5
SOUTH CAROLINA	90.5	92.3	91.3	93.6	92.5	93.8	92.9	94.1
SOUTH DAKOTA	94.3	95.9	93.3	94.5	93.9	95.0	90.6	91.7
TENNESSEE	93.0	95.5	94.0	96.2	94.5	96.4	94.6	96.3
TEXAS	91.3	93.3	91.0	92.6	91.3	93.0	92.2	93.7
UTAH	97.6	97.9	96.7	97.0	96.9	97.7	97.1	97.7
VERMONT	96.5	98.0	95.9	97.7	95.1	96.7	95.2	96.1
VIRGINIA	95.9	97.3	94.9	96.1	94.5	95.7	93.9	94.6
WASHINGTON	95.7	96.6	94.5	95.5	95.9	96.9	95.2	95.9
WEST VIRGINIA	92.7	94.9	92.9	95.0	93.2	94.9	93.8	95.5
WISCONSIN	97.3	97.7	97.0	97.7	96.3	97.2	95.9	96.8
WYOMING	94.1	95.5	95.0	95.7	93.4	95.0	93.7	94.6

Table 3
Percentage of Households with a Telephone by State

	1999		2000		2001		2002	
	ANNUAL AVERAGE		ANNUAL AVERAGE		ANNUAL AVERAGE		ANNUAL AVERAGE	
	Unit	Avail	Unit	Avail	Unit	Avail	Unit	Avail
UNITED STATES	94.2	95.0	94.4	95.2	94.9	95.7	95.3	96.2
ALABAMA	91.5	93.0	91.9	93.3	92.8	94.0	92.2	93.2
ALASKA	94.6	96.5	94.3	96.9	96.0	97.1	96.4	97.9
ARIZONA	93.2	93.8	93.9	94.8	94.5	95.1	94.8	96.0
ARKANSAS	88.9	90.5	88.6	89.9	91.3	92.9	92.1	93.4
CALIFORNIA	95.7	96.2	95.8	96.4	96.6	97.0	97.0	97.4
COLORADO	96.7	97.2	96.3	96.7	96.7	97.3	97.2	97.7
CONNECTICUT	96.5	96.8	96.4	96.8	96.1	96.8	97.4	97.9
DELAWARE	95.7	96.9	96.3	97.1	96.2	96.9	96.8	97.3
DISTRICT OF COLUMBIA	92.4	93.5	93.2	94.1	94.5	95.5	94.0	95.6
FLORIDA	92.6	93.6	92.1	92.9	93.2	94.0	94.3	95.2
GEORGIA	92.1	93.2	91.1	92.5	92.4	93.4	94.0	94.8
HAWAII	96.3	97.1	94.7	95.3	95.7	96.6	96.8	97.7
IDAHO	93.8	94.6	93.9	94.8	94.5	95.6	95.0	96.1
ILLINOIS	91.8	93.0	91.5	92.3	92.5	93.4	92.8	93.7
INDIANA	93.8	95.2	94.5	95.3	93.9	95.0	93.4	94.5
IOWA	95.8	96.5	96.2	97.1	97.1	97.8	96.9	97.8
KANSAS	93.8	94.8	94.8	95.7	94.2	95.9	95.5	96.6
KENTUCKY	92.8	94.1	93.3	94.3	93.5	94.5	95.0	96.0
LOUISIANA	91.5	93.1	92.6	93.8	93.6	94.6	92.4	93.6
MAINE	97.2	97.9	97.9	98.3	97.8	98.5	97.9	98.7
MARYLAND	95.3	95.8	95.0	96.0	96.0	96.3	96.4	97.0
MASSACHUSETTS	95.4	96.0	94.6	95.5	95.6	96.1	96.9	97.5
MICHIGAN	94.2	94.9	95.0	95.6	94.7	95.6	94.3	94.9
MINNESOTA	96.9	97.3	97.4	97.8	97.5	97.8	97.7	98.3
MISSISSIPPI	88.0	91.2	89.2	92.0	89.9	92.6	91.4	93.3
MISSOURI	95.6	96.6	95.8	96.9	96.1	96.8	96.2	97.0
MONTANA	95.3	96.2	94.6	95.1	95.0	95.7	94.8	96.0
NEBRASKA	95.9	96.6	97.3	98.0	96.6	97.4	95.8	96.7
NEVADA	93.1	93.5	94.0	94.5	95.1	95.8	95.5	96.1
NEW HAMPSHIRE	97.0	97.6	97.7	98.3	98.3	98.6	97.2	97.7
NEW JERSEY	93.9	94.3	94.6	95.0	95.8	96.4	95.9	96.9
NEW MEXICO	89.8	91.4	91.2	92.7	92.2	93.6	91.8	93.9
NEW YORK	95.3	96.1	95.1	95.7	95.1	95.9	95.8	96.3
NORTH CAROLINA	93.9	94.8	93.9	95.0	93.6	94.7	94.3	95.2
NORTH DAKOTA	97.3	97.9	95.8	96.4	94.4	95.3	94.9	95.0
OHIO	94.7	95.6	94.8	95.8	96.0	96.7	95.9	96.9
OKLAHOMA	91.2	92.5	91.2	92.3	93.2	94.3	93.1	94.6
OREGON	95.2	96.1	94.8	95.6	95.6	96.5	97.2	97.7
PENNSYLVANIA	97.1	97.4	96.6	97.1	97.0	97.5	98.0	98.2
RHODE ISLAND	94.3	94.7	94.9	95.9	96.3	96.7	96.1	96.7
SOUTH CAROLINA	92.9	94.0	93.2	94.2	94.5	95.6	94.3	95.1
SOUTH DAKOTA	92.7	93.4	94.3	95.0	95.1	95.8	95.1	95.6
TENNESSEE	94.5	96.0	95.5	96.6	93.2	94.7	93.6	94.9
TEXAS	92.4	93.5	93.5	94.4	93.8	94.9	94.2	95.5
UTAH	95.6	96.5	95.9	96.5	96.6	96.9	96.7	97.6
VERMONT	95.3	96.7	95.6	96.2	97.2	97.8	97.6	98.1
VIRGINIA	93.2	94.1	95.4	96.0	94.7	95.3	96.2	96.8
WASHINGTON	95.9	96.4	94.9	96.0	96.0	96.9	96.4	97.2
WEST VIRGINIA	92.7	94.6	94.0	95.3	93.5	95.3	94.5	95.7
WISCONSIN	95.7	96.6	94.8	96.0	95.8	96.8	96.1	97.0
WYOMING	95.0	95.6	94.7	96.0	93.8	94.8	94.0	94.8

Table 3
Percentage of Households with a Telephone by State

	2003		2004		2005		2006	
	ANNUAL AVERAGE		ANNUAL AVERAGE		ANNUAL AVERAGE		ANNUAL AVERAGE	
	Unit	Avail	Unit	Avail	Unit	Avail	Unit	Avail
UNITED STATES	95.1	96.0	93.8	94.8	93.1	94.3	93.6	94.7
ALABAMA	91.7	93.0	92.2	93.4	91.6	92.8	90.4	92.4
ALASKA	96.8	98.2	95.6	96.8	95.2	96.4	95.7	97.2
ARIZONA	95.2	96.1	91.8	92.7	92.9	93.9	92.5	93.6
ARKANSAS	91.0	92.3	88.6	90.8	87.9	90.5	90.0	91.7
CALIFORNIA	97.1	97.5	96.0	96.5	95.4	96.2	95.6	96.3
COLORADO	96.8	97.4	95.8	96.4	95.1	96.0	94.7	95.5
CONNECTICUT	96.8	97.9	95.5	96.3	93.9	95.0	95.2	96.1
DELAWARE	96.6	97.2	96.0	97.0	91.5	92.8	93.5	94.4
DISTRICT OF COLUMBIA	95.3	96.3	91.9	93.0	92.2	94.0	91.2	93.0
FLORIDA	94.6	95.3	93.4	94.6	91.8	93.4	92.7	94.2
GEORGIA	93.7	94.4	91.2	92.0	89.8	91.1	90.5	91.5
HAWAII	97.3	98.2	95.4	96.4	94.8	95.7	95.5	96.5
IDAHO	94.5	95.9	94.8	95.7	94.8	95.8	95.5	96.1
ILLINOIS	91.7	92.6	90.1	91.0	89.6	90.5	90.8	91.5
INDIANA	93.5	94.5	91.8	93.1	90.8	92.3	89.3	90.5
IOWA	96.8	97.5	95.4	96.6	95.4	96.1	96.1	96.8
KANSAS	95.9	97.0	94.8	96.0	94.3	95.6	94.3	95.3
KENTUCKY	94.6	95.5	91.4	92.9	91.3	93.0	91.3	92.7
LOUISIANA	93.2	94.3	90.9	92.3	91.8	93.5	93.9	95.2
MAINE	97.8	98.3	96.6	97.8	95.7	96.8	96.3	97.5
MARYLAND	97.7	98.1	93.4	94.2	94.0	94.7	95.4	96.6
MASSACHUSETTS	97.6	98.2	96.4	96.9	94.5	95.6	95.3	96.2
MICHIGAN	94.3	95.5	93.7	94.6	92.6	94.0	94.2	94.8
MINNESOTA	96.9	97.5	97.1	97.9	96.2	97.3	97.6	98.5
MISSISSIPPI	91.7	93.5	89.6	90.9	89.5	92.0	90.5	92.8
MISSOURI	95.9	96.5	93.7	94.8	94.2	95.6	94.9	96.3
MONTANA	93.2	94.3	93.5	94.4	93.0	94.9	93.3	94.8
NEBRASKA	96.0	96.5	95.7	96.8	94.3	96.3	93.5	95.6
NEVADA	94.5	95.1	92.2	92.9	91.2	92.1	93.0	93.7
NEW HAMPSHIRE	97.6	97.9	96.4	96.9	95.8	96.8	96.4	97.2
NEW JERSEY	96.3	97.2	95.1	95.9	93.8	95.0	94.9	95.6
NEW MEXICO	91.7	93.7	91.4	93.5	91.2	92.9	88.5	90.2
NEW YORK	95.2	95.8	94.5	95.2	92.1	93.6	91.6	93.0
NORTH CAROLINA	94.1	95.2	93.3	94.4	92.8	94.1	93.3	95.0
NORTH DAKOTA	94.1	94.9	95.0	95.7	96.3	97.0	96.5	97.2
OHIO	96.3	96.9	94.9	96.0	94.1	94.9	94.7	95.8
OKLAHOMA	91.6	92.7	91.0	93.1	89.2	91.2	92.2	94.0
OREGON	96.5	97.0	95.5	96.2	95.7	96.7	96.7	97.3
PENNSYLVANIA	97.0	97.5	95.6	96.1	95.6	96.4	96.3	96.9
RHODE ISLAND	96.9	97.4	95.3	95.8	95.3	96.0	94.4	95.3
SOUTH CAROLINA	93.2	94.9	93.4	95.5	93.1	94.7	92.5	93.7
SOUTH DAKOTA	94.1	95.0	93.6	94.4	95.9	96.6	96.4	97.1
TENNESSEE	94.2	95.4	92.8	94.0	92.3	93.3	92.5	93.6
TEXAS	93.6	94.8	91.8	93.4	91.1	92.5	91.5	93.1
UTAH	97.1	97.8	96.3	97.1	96.9	97.6	96.6	97.3
VERMONT	97.0	97.9	95.9	96.6	95.6	96.5	96.0	96.7
VIRGINIA	95.5	96.3	94.0	94.9	93.2	94.4	94.1	95.4
WASHINGTON	96.6	97.4	95.5	96.4	96.9	97.4	96.9	97.7
WEST VIRGINIA	94.3	95.8	93.2	94.5	92.6	94.1	93.0	94.1
WISCONSIN	96.1	96.8	95.5	96.3	94.8	95.4	95.6	96.1
WYOMING	93.8	95.0	94.6	95.3	94.8	95.8	96.1	96.6

Table 3
Percentage of Households with a Telephone by State

	2007							
	MARCH		JULY		NOVEMBER		ANNUAL AVERAGE	
	Unit	Avail	Unit	Avail	Unit	Avail	Unit	Avail
UNITED STATES	94.6	95.3	95.0	95.8	94.9	95.8	94.8	95.6
ALABAMA	90.7	92.3	92.6	94.1	92.1	93.0	91.8	93.1
ALASKA	96.0	96.8	96.7	98.0	96.9	97.8	96.5	97.6
ARIZONA	94.2	95.3	93.1	94.5	91.6	93.0	92.9	94.3
ARKANSAS	91.0	91.5	93.0	93.9	91.9	93.6	92.0	93.0
CALIFORNIA	96.2	96.6	96.7	97.2	96.7	97.2	96.5	97.0
COLORADO	96.1	97.0	97.4	97.6	97.0	97.3	96.8	97.3
CONNECTICUT	95.4	96.2	96.7	97.6	97.6	97.8	96.6	97.2
DELAWARE	93.7	94.0	95.0	95.4	95.9	96.7	94.9	95.4
DISTRICT OF COLUMBIA	92.5	93.7	90.5	91.4	92.0	93.9	91.6	93.0
FLORIDA	93.2	94.3	93.3	94.4	94.2	95.6	93.6	94.8
GEORGIA	92.7	93.3	92.2	93.9	92.8	94.0	92.6	93.7
HAWAII	96.0	96.4	96.9	97.3	95.1	96.5	96.0	96.7
IDAHO	96.5	97.4	96.8	97.1	96.0	96.3	96.4	97.0
ILLINOIS	93.4	94.0	94.1	94.6	94.7	95.5	94.1	94.7
INDIANA	91.6	92.1	91.0	92.3	88.6	89.7	90.4	91.3
IOWA	96.5	97.1	97.7	98.2	96.9	97.9	97.0	97.8
KANSAS	95.0	95.6	97.0	97.6	96.4	96.7	96.2	96.6
KENTUCKY	94.4	94.5	94.4	95.2	94.3	94.7	94.4	94.8
LOUISIANA	94.6	94.8	93.9	95.8	96.1	96.7	94.9	95.8
MAINE	97.1	97.7	97.0	98.2	95.8	96.4	96.6	97.4
MARYLAND	95.5	96.4	96.3	97.5	94.9	95.4	95.5	96.4
MASSACHUSETTS	96.1	97.0	95.9	97.4	97.0	97.8	96.3	97.4
MICHIGAN	94.1	94.8	95.6	96.5	95.2	95.6	95.0	95.6
MINNESOTA	98.1	98.6	97.8	98.5	97.8	99.0	97.9	98.7
MISSISSIPPI	91.0	91.9	89.8	91.3	90.6	92.9	90.5	92.0
MISSOURI	95.7	96.6	96.1	96.7	96.5	97.5	96.1	96.9
MONTANA	96.0	97.0	94.7	95.1	95.4	96.3	95.4	96.1
NEBRASKA	94.0	94.6	92.8	93.6	94.3	94.9	93.7	94.3
NEVADA	93.8	95.1	95.5	96.0	96.4	97.1	95.2	96.1
NEW HAMPSHIRE	96.5	96.9	96.6	98.3	97.5	98.4	96.8	97.9
NEW JERSEY	95.8	96.3	94.9	95.2	96.3	96.6	95.7	96.0
NEW MEXICO	92.5	93.5	91.1	92.7	91.3	92.9	91.6	93.0
NEW YORK	93.0	94.0	93.0	94.1	94.2	95.3	93.4	94.5
NORTH CAROLINA	93.7	94.7	94.8	95.6	95.1	96.5	94.5	95.6
NORTH DAKOTA	98.1	98.6	97.6	98.1	98.5	98.8	98.0	98.5
OHIO	94.9	95.8	96.6	97.6	96.2	97.1	95.9	96.8
OKLAHOMA	92.8	94.4	95.3	96.0	96.5	97.0	94.9	95.8
OREGON	96.8	97.6	97.7	98.3	95.8	96.6	96.7	97.5
PENNSYLVANIA	96.1	96.7	97.3	97.8	97.6	97.8	97.0	97.5
RHODE ISLAND	95.7	96.2	95.4	96.1	94.8	95.8	95.3	96.0
SOUTH CAROLINA	91.2	92.6	91.6	93.5	88.9	90.7	90.6	92.2
SOUTH DAKOTA	97.5	97.9	96.4	97.2	97.7	98.5	97.2	97.9
TENNESSEE	94.4	94.9	93.2	94.3	92.1	93.4	93.2	94.2
TEXAS	93.8	94.8	94.1	94.9	92.5	93.7	93.5	94.4
UTAH	97.7	98.1	96.6	97.6	96.1	96.9	96.8	97.5
VERMONT	97.7	98.2	98.0	98.2	96.4	97.7	97.4	98.0
VIRGINIA	94.5	95.3	95.6	96.3	95.9	96.4	95.3	96.0
WASHINGTON	98.3	98.5	95.8	96.4	96.3	97.3	96.8	97.4
WEST VIRGINIA	93.9	95.0	94.3	95.3	95.4	96.1	94.5	95.5
WISCONSIN	96.2	96.6	97.7	97.9	96.6	96.8	96.8	97.1
WYOMING	96.4	96.9	95.3	96.2	96.6	97.8	96.1	97.0

Table 3
Percentage of Households with a Telephone by State

	2008							
	MARCH		JULY		NOVEMBER		ANNUAL AVERAGE	
	Unit	Avail	Unit	Avail	Unit	Avail	Unit	Avail
UNITED STATES	95.2	95.9	95.4	96.1	95.0	95.7	95.2	95.9
ALABAMA	91.8	93.5	95.4	96.8	94.9	95.2	94.0	95.2
ALASKA	95.9	97.9	96.1	98.1	97.2	98.9	96.4	98.3
ARIZONA	93.7	94.1	94.6	95.5	95.4	96.6	94.6	95.4
ARKANSAS	92.5	92.9	93.6	93.9	92.4	93.1	92.9	93.3
CALIFORNIA	96.6	97.1	96.4	97.0	96.3	96.8	96.5	97.0
COLORADO	98.4	98.9	98.0	98.5	97.6	98.0	98.0	98.4
CONNECTICUT	97.4	97.6	96.9	97.1	97.1	97.5	97.1	97.4
DELAWARE	95.2	95.5	92.3	92.7	96.7	96.8	94.7	95.0
DISTRICT OF COLUMBIA	93.9	95.5	91.8	92.8	90.3	91.7	92.0	93.3
FLORIDA	93.8	94.3	93.1	94.1	92.1	92.9	93.0	93.8
GEORGIA	95.0	95.5	92.9	94.0	90.8	92.2	92.9	93.9
HAWAII	96.1	97.3	97.1	97.5	96.2	96.4	96.5	97.0
IDAHO	98.1	98.1	95.2	95.9	94.8	95.2	96.0	96.4
ILLINOIS	94.1	94.9	94.2	95.0	93.9	94.6	94.1	94.9
INDIANA	92.2	92.5	92.6	93.1	91.5	92.2	92.1	92.6
IOWA	97.1	97.4	98.1	98.3	97.1	97.5	97.4	97.7
KANSAS	96.5	96.7	96.7	97.3	95.9	96.6	96.4	96.9
KENTUCKY	92.4	93.2	94.7	95.6	95.1	95.9	94.1	94.9
LOUISIANA	96.7	97.5	95.9	96.6	94.5	95.6	95.7	96.6
MAINE	97.8	98.3	97.6	97.9	98.1	98.7	97.8	98.3
MARYLAND	94.7	95.5	93.3	93.8	96.0	96.7	94.7	95.3
MASSACHUSETTS	96.4	97.7	96.7	97.0	96.1	96.7	96.4	97.1
MICHIGAN	96.1	96.5	96.0	96.1	95.8	96.0	96.0	96.2
MINNESOTA	98.0	98.4	98.3	99.1	98.2	98.7	98.2	98.7
MISSISSIPPI	92.7	94.0	93.0	94.2	92.3	93.9	92.7	94.0
MISSOURI	96.5	97.0	97.0	97.4	97.0	97.8	96.8	97.4
MONTANA	95.1	95.3	94.9	96.1	93.4	94.0	94.5	95.1
NEBRASKA	95.3	96.6	95.6	97.2	93.3	95.8	94.7	96.5
NEVADA	93.8	94.4	95.8	97.0	92.5	92.8	94.0	94.7
NEW HAMPSHIRE	96.7	98.2	98.2	98.9	98.1	98.5	97.7	98.5
NEW JERSEY	94.3	94.6	94.6	94.8	95.4	95.8	94.8	95.1
NEW MEXICO	94.0	94.0	92.4	94.6	91.4	92.5	92.6	93.7
NEW YORK	94.2	95.1	94.3	95.3	94.7	95.5	94.4	95.3
NORTH CAROLINA	92.2	93.4	94.5	95.1	93.9	94.9	93.5	94.5
NORTH DAKOTA	97.7	97.9	98.8	99.3	98.5	99.0	98.3	98.7
OHIO	97.4	97.6	97.0	97.6	96.4	96.7	96.9	97.3
OKLAHOMA	95.1	96.0	95.1	95.9	95.6	96.2	95.3	96.0
OREGON	97.3	97.9	97.5	97.7	98.1	98.8	97.6	98.1
PENNSYLVANIA	97.7	98.1	97.6	98.5	98.3	98.7	97.9	98.4
RHODE ISLAND	95.9	96.4	97.3	98.0	96.0	96.5	96.4	97.0
SOUTH CAROLINA	91.0	92.3	90.1	91.0	91.4	93.0	90.8	92.1
SOUTH DAKOTA	96.1	97.4	97.8	98.1	96.4	96.8	96.8	97.5
TENNESSEE	93.0	93.2	93.1	93.7	92.9	94.2	93.0	93.7
TEXAS	93.6	95.2	95.4	96.1	93.9	94.7	94.3	95.3
UTAH	97.2	97.7	97.1	97.4	96.3	96.6	96.9	97.2
VERMONT	97.3	97.7	96.4	96.8	97.4	98.0	97.0	97.5
VIRGINIA	96.6	96.8	95.5	96.4	95.0	95.5	95.7	96.2
WASHINGTON	98.3	98.5	97.9	98.3	98.0	98.3	98.1	98.4
WEST VIRGINIA	93.8	94.4	94.2	95.3	95.4	96.2	94.5	95.3
WISCONSIN	97.0	97.3	97.7	98.1	96.8	97.5	97.2	97.6
WYOMING	95.6	97.3	95.4	96.7	96.4	96.7	95.8	96.9

Table 3
Percentage of Households with a Telephone by State

	2009			
	MARCH		JULY	
	Unit	Avail	Unit	Avail
UNITED STATES	95.6	96.3	95.7	96.3
ALABAMA	94.7	95.2	95.3	96.0
ALASKA	95.8	97.0	95.9	97.5
ARIZONA	93.0	93.9	93.5	94.4
ARKANSAS	93.5	94.1	92.8	93.6
CALIFORNIA	96.8	97.3	96.6	96.9
COLORADO	98.3	98.8	97.0	97.7
CONNECTICUT	97.6	97.8	98.5	98.9
DELAWARE	95.8	96.1	96.5	96.9
DISTRICT OF COLUMBIA	94.1	94.9	91.3	92.0
FLORIDA	92.6	93.1	92.9	93.7
GEORGIA	95.0	95.5	93.8	94.5
HAWAII	97.2	97.7	98.7	98.7
IDAHO	96.8	97.1	96.3	96.8
ILLINOIS	94.6	95.6	95.9	96.5
INDIANA	93.3	94.2	92.3	92.3
IOWA	98.4	98.8	98.3	98.6
KANSAS	96.5	97.5	97.1	97.5
KENTUCKY	93.4	94.0	94.8	95.0
LOUISIANA	95.5	96.1	94.9	95.7
MAINE	97.9	98.5	97.1	97.9
MARYLAND	95.5	96.1	95.0	95.5
MASSACHUSETTS	97.9	98.4	98.2	98.6
MICHIGAN	97.1	97.5	97.1	97.3
MINNESOTA	98.4	98.7	98.1	99.0
MISSISSIPPI	93.5	95.1	94.1	96.4
MISSOURI	97.2	98.1	95.1	96.4
MONTANA	95.7	96.1	92.3	92.7
NEBRASKA	95.9	97.8	95.9	97.2
NEVADA	94.1	95.2	94.4	94.8
NEW HAMPSHIRE	98.5	99.1	98.0	98.5
NEW JERSEY	94.8	95.3	95.1	95.6
NEW MEXICO	92.3	93.4	95.3	96.2
NEW YORK	94.7	95.6	95.4	96.0
NORTH CAROLINA	95.3	96.4	95.5	97.1
NORTH DAKOTA	98.5	99.1	98.3	98.6
OHIO	97.5	98.2	96.6	97.0
OKLAHOMA	96.0	96.5	97.3	97.9
OREGON	98.2	98.3	97.3	98.1
PENNSYLVANIA	97.6	98.0	97.9	98.3
RHODE ISLAND	96.0	96.6	97.4	97.7
SOUTH CAROLINA	94.6	95.4	95.0	95.7
SOUTH DAKOTA	96.9	97.9	97.6	98.0
TENNESSEE	92.6	93.2	93.1	93.5
TEXAS	94.7	95.5	95.2	95.8
UTAH	96.2	96.6	96.7	96.9
VERMONT	97.1	98.0	98.2	98.7
VIRGINIA	95.4	95.9	96.4	96.7
WASHINGTON	98.7	99.1	97.6	98.4
WEST VIRGINIA	94.9	95.5	95.2	95.9
WISCONSIN	96.6	97.3	97.0	97.4
WYOMING	98.4	98.7	96.3	97.2

Table 4
Percentage of Households with a Telephone by Income

	RACE						HISPANIC ORIGIN	
	TOTAL		WHITE		BLACK		Unit	Avail
	Unit	Avail	Unit	Avail	Unit	Avail	Unit	Avail
NOVEMBER 1983								
TOTAL HOUSEHOLDS	91.4	93.7	93.1	95.0	78.8	83.9	80.7	84.6
UNDER \$5,000	71.7	78.4	75.7	81.9	62.7	70.4	58.3	64.6
\$5,000 - \$7,499	82.7	87.2	84.5	88.5	74.7	82.0	71.1	76.5
\$7,500 - \$9,999	88.2	90.9	89.6	92.2	80.5	83.9	72.6	77.9
\$10,000 - \$12,499	89.7	92.7	91.2	93.9	82.0	86.2	76.8	82.1
\$12,500 - \$14,999	92.1	94.6	93.4	95.2	82.5	90.7	89.8	91.7
\$15,000 - \$17,499	94.6	96.2	94.9	96.4	91.7	95.1	86.9	90.8
\$17,500 - \$19,999	95.7	97.4	96.1	97.7	91.4	95.0	88.4	91.5
\$20,000 - \$24,999	96.9	97.8	97.4	98.2	91.2	93.2	93.1	94.3
\$25,000 - \$29,999	98.0	98.9	98.2	99.0	96.1	97.2	98.3	99.0
\$30,000 - \$34,999	98.8	99.1	99.0	99.2	95.1	97.7	97.7	98.9
\$35,000 - \$39,999	99.0	99.5	99.1	99.5	98.4	98.4	92.1	98.2
\$40,000 - \$49,999	99.2	99.5	99.4	99.7	97.3	97.3	100.0	100.0
\$50,000 - \$74,999	99.4	99.7	99.5	99.7	98.5	100.0	99.6	100.0
\$75,000 +	99.4	99.6	99.4	99.6	100.0	100.0	100.0	100.0
1984 ANNUAL AVERAGE								
TOTAL HOUSEHOLDS	91.6	93.7	93.2	94.9	79.8	84.5	80.9	84.3
UNDER \$5,000	71.2	77.5	74.5	80.4	63.2	70.5	55.1	62.3
\$5,000 - \$7,499	83.3	86.9	85.5	88.7	74.8	80.2	69.8	73.6
\$7,500 - \$9,999	86.5	89.6	88.3	91.0	77.2	82.7	75.0	79.7
\$10,000 - \$12,499	89.7	92.6	91.1	93.6	81.1	86.3	79.7	84.6
\$12,500 - \$14,999	92.1	94.4	93.0	95.0	85.4	89.5	87.3	90.5
\$15,000 - \$17,499	93.7	95.7	94.2	96.0	88.5	92.2	88.4	90.0
\$17,500 - \$19,999	95.1	96.4	95.6	96.7	91.7	94.4	91.0	92.8
\$20,000 - \$24,999	96.8	97.8	97.1	98.0	93.3	95.8	92.5	94.5
\$25,000 - \$29,999	98.1	98.8	98.4	98.9	95.1	97.2	96.4	97.2
\$30,000 - \$34,999	98.7	99.1	98.8	99.3	96.8	97.2	98.8	99.1
\$35,000 - \$39,999	99.2	99.5	99.3	99.6	97.7	98.3	98.2	98.5
\$40,000 - \$49,999	99.3	99.6	99.4	99.7	96.6	96.9	98.9	99.3
\$50,000 - \$74,999	99.4	99.8	99.5	99.8	98.0	98.4	100.0	100.0
\$75,000 +	98.9	99.6	98.9	99.6	96.5	100.0	98.0	100.0
1985 ANNUAL AVERAGE								
TOTAL HOUSEHOLDS	91.8	93.9	93.3	95.0	81.1	85.2	81.3	84.4
UNDER \$5,000	71.9	78.1	75.3	81.3	63.9	70.6	61.6	67.0
\$5,000 - \$7,499	82.7	86.5	84.8	88.1	74.0	79.8	66.6	71.3
\$7,500 - \$9,999	86.8	90.0	88.1	90.9	80.3	85.0	75.0	79.4
\$10,000 - \$12,499	89.6	92.2	90.8	93.2	82.3	86.0	80.4	82.8
\$12,500 - \$14,999	91.0	93.7	92.2	94.5	82.7	87.8	82.8	85.8
\$15,000 - \$17,499	93.4	95.6	94.2	96.2	88.2	91.8	85.7	88.6
\$17,500 - \$19,999	94.7	96.2	95.1	96.6	91.5	93.4	90.4	92.8
\$20,000 - \$24,999	96.3	97.5	96.5	97.6	94.4	96.3	91.3	93.7
\$25,000 - \$29,999	97.6	98.5	97.8	98.6	95.8	97.3	93.0	95.9
\$30,000 - \$34,999	98.6	99.0	98.7	99.1	97.3	98.4	97.3	97.3
\$35,000 - \$39,999	98.8	99.2	98.9	99.4	96.9	97.8	98.2	99.4
\$40,000 - \$49,999	99.1	99.4	99.1	99.4	97.8	98.2	97.5	98.2
\$50,000 - \$74,999	99.3	99.7	99.4	99.7	97.9	98.8	99.5	99.5
\$75,000 +	99.2	99.5	99.2	99.5	97.6	97.6	98.5	98.5

Table 4
Percentage of Households with a Telephone by Income

	RACE						HISPANIC ORIGIN	
	TOTAL		WHITE		BLACK		Unit	Avail
	Unit	Avail	Unit	Avail	Unit	Avail	Unit	Avail
1986 ANNUAL AVERAGE								
TOTAL HOUSEHOLDS	92.3	94.1	93.7	95.2	81.6	85.9	81.4	84.1
UNDER \$5,000	71.6	77.4	74.9	80.1	63.9	71.0	57.5	62.9
\$5,000 - \$7,499	83.1	86.5	85.2	88.2	74.3	79.6	68.1	72.1
\$7,500 - \$9,999	86.9	90.2	88.4	91.1	78.6	85.2	72.9	75.8
\$10,000 - \$12,499	89.6	92.1	90.7	93.0	82.6	86.4	80.3	82.6
\$12,500 - \$14,999	91.2	93.8	91.9	94.4	86.4	90.3	83.9	87.8
\$15,000 - \$17,499	93.1	95.1	94.3	95.7	85.3	91.6	86.3	88.9
\$17,500 - \$19,999	94.9	96.3	95.3	96.7	92.2	94.2	87.2	90.1
\$20,000 - \$24,999	96.5	97.5	96.9	97.9	92.8	94.6	93.0	94.1
\$25,000 - \$29,999	97.7	98.4	98.0	98.7	94.5	95.9	93.9	95.2
\$30,000 - \$34,999	98.4	98.9	98.6	99.0	96.7	97.5	97.5	98.4
\$35,000 - \$39,999	98.9	99.3	99.0	99.4	97.6	97.9	98.1	99.3
\$40,000 - \$49,999	99.1	99.4	99.1	99.4	98.2	98.2	98.5	98.8
\$50,000 - \$74,999	99.5	99.8	99.6	99.8	99.4	99.4	99.4	99.7
\$75,000 +	99.4	99.6	99.4	99.6	98.0	99.5	97.5	100.0
1987 ANNUAL AVERAGE								
TOTAL HOUSEHOLDS	92.4	94.2	93.8	95.4	81.8	85.9	83.0	85.4
UNDER \$5,000	71.5	77.4	75.0	80.3	63.7	71.0	60.7	65.7
\$5,000 - \$7,499	83.4	86.7	85.5	88.4	74.8	80.2	69.9	72.4
\$7,500 - \$9,999	86.7	89.6	88.1	90.6	79.3	84.0	75.8	78.9
\$10,000 - \$12,499	89.5	92.3	90.4	93.1	83.2	87.5	81.0	84.1
\$12,500 - \$14,999	90.8	93.2	91.9	94.1	83.8	87.7	85.2	86.9
\$15,000 - \$17,499	92.6	94.9	93.5	95.5	86.9	90.8	85.6	88.7
\$17,500 - \$19,999	94.4	96.0	95.1	96.4	89.0	92.7	89.3	90.6
\$20,000 - \$24,999	96.4	97.6	96.8	97.9	93.5	95.1	93.1	94.9
\$25,000 - \$29,999	97.5	98.4	98.0	98.7	93.4	95.3	96.4	97.1
\$30,000 - \$34,999	98.1	98.9	98.3	99.0	96.1	97.2	96.9	97.7
\$35,000 - \$39,999	98.8	99.2	98.9	99.3	96.5	98.6	97.4	97.7
\$40,000 - \$49,999	99.4	99.7	99.5	99.7	98.7	98.7	99.7	99.8
\$50,000 - \$74,999	99.5	99.8	99.5	99.8	99.1	99.4	98.7	99.6
\$75,000 +	99.5	99.8	99.5	99.8	98.5	99.6	98.6	100.0
1988 ANNUAL AVERAGE								
TOTAL HOUSEHOLDS	92.7	94.5	94.1	95.6	83.0	86.8	82.1	85.1
UNDER \$5,000	72.0	78.4	74.9	80.8	65.8	73.2	58.5	64.5
\$5,000 - \$7,499	83.3	87.1	85.1	88.4	76.9	82.3	66.4	71.7
\$7,500 - \$9,999	85.6	88.7	87.2	90.3	77.7	81.4	67.3	72.8
\$10,000 - \$12,499	88.8	91.5	90.1	92.4	81.7	86.5	77.5	80.9
\$12,500 - \$14,999	91.3	93.7	92.2	94.4	85.1	88.8	81.5	84.5
\$15,000 - \$19,999	93.6	95.3	94.3	95.9	88.5	91.1	88.6	90.6
\$20,000 - \$24,999	96.2	97.4	96.5	97.6	93.5	95.7	91.1	93.1
\$25,000 - \$29,999	97.6	98.4	97.9	98.5	94.4	96.7	95.0	96.4
\$30,000 - \$34,999	98.4	99.0	98.7	99.2	95.4	96.7	98.6	99.0
\$35,000 - \$39,999	98.8	99.2	98.9	99.3	97.8	98.4	97.2	97.7
\$40,000 - \$49,999	99.3	99.6	99.4	99.7	97.3	98.5	98.7	99.7
\$50,000 - \$74,999	99.5	99.8	99.6	99.8	99.2	99.3	99.4	99.8
\$75,000 +	99.5	99.9	99.4	99.9	100.0	100.0	97.8	100.0

Table 4
Percentage of Households with a Telephone by Income

	RACE						HISPANIC ORIGIN	
	TOTAL		WHITE		BLACK		Unit	Avail
	Unit	Avail	Unit	Avail	Unit	Avail	Unit	Avail
1989 ANNUAL AVERAGE								
TOTAL HOUSEHOLDS	93.1	94.9	94.5	95.9	83.2	87.1	83.0	86.0
UNDER \$5,000	74.4	80.4	78.1	83.2	65.6	73.5	62.1	67.3
\$5,000 - \$7,499	83.7	87.4	85.7	89.1	77.4	82.0	68.8	73.8
\$7,500 - \$9,999	86.6	89.8	88.5	91.3	78.4	83.6	75.9	80.2
\$10,000 - \$12,499	88.4	91.3	90.0	92.6	79.3	84.9	73.2	76.8
\$12,500 - \$14,999	91.3	93.7	92.4	94.5	84.5	88.8	79.2	83.7
\$15,000 - \$19,999	93.2	95.0	94.2	95.8	85.9	89.2	86.3	88.8
\$20,000 - \$24,999	95.9	97.2	96.4	97.5	91.6	94.3	92.0	94.4
\$25,000 - \$29,999	97.5	98.4	97.9	98.6	94.0	96.0	93.3	96.3
\$30,000 - \$34,999	98.3	98.8	98.5	98.9	96.1	97.0	95.6	96.2
\$35,000 - \$39,999	98.7	99.3	98.9	99.4	96.7	98.0	95.8	97.5
\$40,000 - \$49,999	99.1	99.5	99.2	99.6	97.2	97.7	97.0	98.2
\$50,000 - \$59,999	99.5	99.7	99.5	99.8	98.7	99.0	98.7	99.2
\$60,000 - \$74,999	99.5	99.7	99.5	99.7	99.3	99.3	95.7	96.8
\$75,000 +	99.5	99.8	99.5	99.8	99.5	99.5	99.7	99.7
1990 ANNUAL AVERAGE								
TOTAL HOUSEHOLDS	93.3	95.0	94.6	96.1	83.5	87.0	82.7	85.3
UNDER \$5,000	75.4	81.0	79.1	84.2	66.1	72.8	61.1	66.1
\$5,000 - \$7,499	82.6	86.8	84.9	88.8	74.9	80.1	66.7	70.6
\$7,500 - \$9,999	86.9	89.9	89.0	91.6	77.3	82.4	74.8	77.8
\$10,000 - \$12,499	88.9	91.7	90.2	92.8	81.9	85.5	74.1	77.1
\$12,500 - \$14,999	91.7	93.9	92.7	94.7	85.9	88.7	82.0	84.3
\$15,000 - \$19,999	93.3	95.3	94.2	96.0	87.7	91.0	85.1	88.6
\$20,000 - \$24,999	95.6	97.0	96.1	97.4	91.9	93.7	89.4	91.3
\$25,000 - \$29,999	97.0	98.0	97.7	98.5	90.9	93.2	94.2	95.5
\$30,000 - \$34,999	97.9	98.6	98.4	98.9	93.3	95.4	96.0	97.0
\$35,000 - \$39,999	98.7	99.3	98.8	99.4	97.0	98.0	94.1	96.3
\$40,000 - \$49,999	99.1	99.4	99.2	99.5	98.5	98.8	97.8	97.8
\$50,000 - \$59,999	99.4	99.6	99.5	99.7	98.7	98.7	97.5	98.2
\$60,000 - \$74,999	99.5	99.7	99.6	99.8	98.3	98.8	98.8	99.1
\$75,000 +	99.5	99.8	99.5	99.8	98.6	98.6	97.7	99.6
1991 ANNUAL AVERAGE								
TOTAL HOUSEHOLDS	93.4	95.1	94.8	96.2	83.5	87.2	84.1	86.7
UNDER \$5,000	73.9	80.1	78.3	83.7	63.3	71.2	65.2	71.3
\$5,000 - \$7,499	82.9	86.8	85.2	88.8	75.0	80.3	69.6	74.7
\$7,500 - \$9,999	86.5	89.7	88.1	91.0	79.1	83.7	73.1	76.9
\$10,000 - \$12,499	88.9	91.6	90.0	92.5	82.4	86.2	76.0	79.2
\$12,500 - \$14,999	91.1	93.4	92.1	94.3	85.5	88.4	82.4	84.6
\$15,000 - \$19,999	93.4	95.2	94.3	95.9	87.1	90.7	87.0	89.8
\$20,000 - \$24,999	95.5	97.0	96.0	97.5	91.2	93.3	91.6	93.5
\$25,000 - \$29,999	96.8	97.9	97.3	98.2	93.6	96.0	90.9	92.4
\$30,000 - \$34,999	98.3	98.9	98.6	99.2	95.4	97.1	95.8	97.1
\$35,000 - \$39,999	98.7	99.1	98.8	99.3	97.0	97.7	96.2	97.3
\$40,000 - \$49,999	99.1	99.5	99.2	99.6	98.1	98.6	98.2	98.8
\$50,000 - \$59,999	99.5	99.7	99.5	99.7	98.6	99.0	97.9	98.6
\$60,000 - \$74,999	99.7	99.9	99.7	99.9	99.3	99.5	98.8	99.2
\$75,000 +	99.7	99.9	99.7	99.9	99.6	100.0	98.5	99.6

Table 4
Percentage of Households with a Telephone by Income

	RACE						HISPANIC ORIGIN	
	TOTAL		WHITE		BLACK		Unit	Avail
	Unit	Avail	Unit	Avail	Unit	Avail	Unit	Avail
1992 ANNUAL AVERAGE								
TOTAL HOUSEHOLDS	93.8	95.3	95.2	96.4	84.2	87.9	85.8	88.2
UNDER \$5,000	72.0	78.1	75.5	81.1	64.1	71.3	65.0	70.7
\$5,000 - \$7,499	83.2	86.8	85.4	88.3	76.3	82.3	72.0	75.5
\$7,500 - \$9,999	87.5	90.2	89.2	91.4	79.9	84.9	76.2	79.9
\$10,000 - \$12,499	90.5	92.9	91.6	93.9	84.6	87.9	82.1	85.3
\$12,500 - \$14,999	91.5	93.7	92.7	94.7	85.1	88.4	85.7	88.8
\$15,000 - \$19,999	93.3	95.0	94.3	95.7	86.6	90.6	86.7	89.5
\$20,000 - \$24,999	95.9	97.1	96.5	97.5	91.2	93.7	93.2	94.5
\$25,000 - \$29,999	97.1	98.0	97.6	98.5	92.6	94.6	94.8	95.6
\$30,000 - \$34,999	98.2	98.9	98.4	99.0	96.3	97.4	96.1	97.1
\$35,000 - \$39,999	98.6	99.0	98.9	99.3	96.4	97.4	96.6	97.5
\$40,000 - \$49,999	99.2	99.5	99.4	99.6	97.6	98.5	98.2	98.7
\$50,000 - \$59,999	99.4	99.7	99.4	99.7	98.9	99.6	98.3	98.5
\$60,000 - \$74,999	99.5	99.8	99.5	99.8	99.3	99.6	98.9	99.7
\$75,000 +	99.4	99.7	99.5	99.8	97.7	97.9	99.1	99.1
1993 ANNUAL AVERAGE								
TOTAL HOUSEHOLDS	94.2	95.6	95.5	96.6	85.2	88.3	86.7	88.8
UNDER \$5,000	72.9	78.9	76.4	82.0	65.5	72.7	66.3	70.7
\$5,000 - \$7,499	84.0	87.2	85.7	88.8	78.7	82.4	75.7	78.6
\$7,500 - \$9,999	87.4	90.1	89.1	91.4	80.1	84.6	79.7	82.8
\$10,000 - \$12,499	90.6	92.7	91.9	93.8	82.9	86.7	85.7	88.3
\$12,500 - \$14,999	92.0	94.1	93.2	95.1	84.8	88.7	84.0	86.2
\$15,000 - \$19,999	93.6	95.2	94.5	96.0	88.0	90.4	85.3	88.3
\$20,000 - \$24,999	96.3	97.5	96.8	97.8	92.6	94.6	91.9	94.6
\$25,000 - \$29,999	97.7	98.5	98.1	98.8	94.5	96.1	95.5	96.9
\$30,000 - \$34,999	98.3	98.9	98.6	99.1	96.3	96.9	96.2	97.3
\$35,000 - \$39,999	98.6	99.0	98.8	99.2	96.3	97.1	95.7	96.3
\$40,000 - \$49,999	99.2	99.5	99.3	99.5	98.2	98.6	96.9	97.4
\$50,000 - \$59,999	99.5	99.7	99.5	99.7	99.0	99.3	98.4	99.1
\$60,000 - \$74,999	99.6	99.8	99.6	99.8	99.3	99.3	100.0	100.0
\$75,000 +	99.5	99.8	99.5	99.8	99.4	100.0	100.0	100.0
1994 ANNUAL AVERAGE								
TOTAL HOUSEHOLDS	93.8	95.4	95.1	96.4	85.7	89.4	86.0	88.3
UNDER \$5,000	76.1	82.1	79.8	84.6	68.7	77.4	66.3	71.8
\$5,000 - \$7,499	82.7	87.0	84.9	88.9	77.2	82.4	73.1	77.3
\$7,500 - \$9,999	87.3	90.5	89.1	92.1	81.4	84.9	81.1	83.8
\$10,000 - \$12,499	89.6	92.2	90.9	93.1	81.5	88.6	83.3	86.2
\$12,500 - \$14,999	91.5	94.0	92.9	95.0	85.5	89.2	84.6	87.8
\$15,000 - \$19,999	93.6	95.3	94.4	95.8	86.6	92.2	87.6	89.7
\$20,000 - \$24,999	95.2	96.7	95.8	97.2	90.3	93.5	91.4	93.5
\$25,000 - \$29,999	96.6	97.6	97.0	97.9	93.9	95.8	92.1	93.3
\$30,000 - \$34,999	97.3	98.2	97.7	98.5	93.8	95.7	91.7	93.9
\$35,000 - \$39,999	97.8	98.5	98.1	98.6	94.4	97.3	95.2	96.0
\$40,000 - \$49,999	98.6	99.1	98.8	99.3	97.2	97.8	96.4	96.6
\$50,000 - \$59,999	99.0	99.3	99.2	99.4	96.3	98.1	99.5	99.7
\$60,000 - \$74,999	99.4	99.5	99.4	99.5	99.5	99.7	98.3	98.5
\$75,000 +	99.1	99.4	99.2	99.4	98.6	99.3	98.7	98.7

Table 4
Percentage of Households with a Telephone by Income

	RACE						HISPANIC ORIGIN	
	TOTAL		WHITE		BLACK		Unit	Avail
	Unit	Avail	Unit	Avail	Unit	Avail	Unit	Avail
1995 ANNUAL AVERAGE								
TOTAL HOUSEHOLDS	93.9	95.2	95.2	96.2	86.2	89.2	85.9	87.8
UNDER \$5,000	75.3	80.5	79.1	83.0	67.4	75.1	68.8	72.2
\$5,000 - \$7,499	82.8	86.3	84.8	87.7	77.9	83.0	72.6	75.5
\$7,500 - \$9,999	87.3	89.6	89.5	91.5	79.0	83.3	78.0	80.4
\$10,000 - \$12,499	89.8	92.1	91.2	93.2	83.5	87.6	84.2	86.4
\$12,500 - \$14,999	91.7	93.5	92.8	94.4	86.4	89.3	84.9	86.8
\$15,000 - \$19,999	93.1	95.0	94.1	95.6	88.5	92.4	84.9	87.6
\$20,000 - \$24,999	95.4	96.4	96.0	96.9	92.4	94.1	90.2	92.1
\$25,000 - \$29,999	96.6	97.6	97.0	97.9	93.7	95.6	92.2	94.3
\$30,000 - \$34,999	97.6	98.0	97.9	98.3	94.3	95.2	94.2	95.1
\$35,000 - \$39,999	98.3	98.7	98.5	98.8	96.9	97.5	97.3	98.4
\$40,000 - \$49,999	98.6	98.9	98.8	99.0	97.1	97.8	96.6	96.6
\$50,000 - \$59,999	98.8	99.1	99.0	99.3	97.7	98.2	95.7	97.0
\$60,000 - \$74,999	99.2	99.3	99.2	99.4	98.8	99.0	98.6	99.4
\$75,000 +	99.0	99.2	99.0	99.2	99.1	99.5	99.0	99.0
1996 ANNUAL AVERAGE								
TOTAL HOUSEHOLDS	93.9	95.0	94.9	95.8	87.3	89.8	86.4	88.0
UNDER \$5,000	75.6	80.3	78.0	81.7	70.1	76.9	68.0	71.4
\$5,000 - \$7,499	83.1	85.8	84.5	86.6	79.9	84.3	76.9	78.8
\$7,500 - \$9,999	87.2	89.8	88.6	90.7	81.9	86.7	79.7	82.3
\$10,000 - \$12,499	88.8	91.4	90.2	92.3	83.5	88.1	82.0	84.3
\$12,500 - \$14,999	91.7	93.5	92.8	94.4	86.1	89.5	85.1	87.0
\$15,000 - \$19,999	93.0	94.6	93.7	95.1	88.7	91.3	86.5	88.7
\$20,000 - \$24,999	94.5	95.6	95.1	96.0	91.3	92.6	86.5	88.6
\$25,000 - \$29,999	96.2	97.1	96.5	97.3	93.3	95.0	94.5	95.4
\$30,000 - \$34,999	97.5	98.1	97.7	98.3	96.4	97.4	95.7	96.3
\$35,000 - \$39,999	97.9	98.3	97.8	98.2	97.5	98.0	95.2	95.7
\$40,000 - \$49,999	98.5	98.9	98.7	99.0	96.7	97.0	96.1	97.5
\$50,000 - \$59,999	98.8	99.0	99.0	99.1	97.3	97.6	97.5	98.2
\$60,000 - \$74,999	98.8	99.1	99.0	99.3	97.3	97.3	97.9	99.4
\$75,000 +	98.9	99.2	99.0	99.2	98.7	99.2	98.4	98.7
1997 ANNUAL AVERAGE								
TOTAL HOUSEHOLDS	93.9	95.0	95.0	95.9	86.9	89.5	86.7	88.6
UNDER \$5,000	75.7	80.8	79.1	83.5	68.4	75.1	68.5	73.5
\$5,000 - \$7,499	82.8	85.9	84.5	87.1	78.1	82.4	74.6	77.0
\$7,500 - \$9,999	86.7	89.5	89.0	91.2	78.6	83.3	79.3	81.4
\$10,000 - \$12,499	89.9	91.9	90.9	92.7	85.3	88.1	82.4	86.0
\$12,500 - \$14,999	91.0	93.1	92.4	94.0	83.9	88.1	84.5	86.4
\$15,000 - \$19,999	93.1	94.6	94.1	95.3	88.8	91.8	86.7	88.4
\$20,000 - \$24,999	95.0	95.9	95.4	96.2	92.1	93.9	89.6	90.9
\$25,000 - \$29,999	95.8	96.8	96.2	97.1	92.6	94.7	91.8	93.7
\$30,000 - \$34,999	97.2	97.9	97.5	98.1	95.1	95.9	93.6	94.9
\$35,000 - \$39,999	97.4	97.9	97.9	98.1	94.8	96.2	94.9	96.4
\$40,000 - \$49,999	98.2	98.6	98.4	98.7	97.0	97.8	96.6	97.4
\$50,000 - \$59,999	98.4	98.8	98.5	98.9	96.9	97.3	97.7	98.6
\$60,000 - \$74,999	99.0	99.2	99.0	99.2	99.5	99.8	98.4	98.4
\$75,000 +	99.0	99.2	99.1	99.3	98.5	98.8	98.1	98.3

Table 4
Percentage of Households with a Telephone by Income

	RACE						HISPANIC ORIGIN	
	TOTAL		WHITE		BLACK		Unit	Avail
	Unit	Avail	Unit	Avail	Unit	Avail	Unit	Avail
1998 ANNUAL AVERAGE								
TOTAL HOUSEHOLDS	94.1	95.2	95.1	96.0	87.9	89.7	88.4	90.0
UNDER \$5,000	77.2	81.3	80.1	83.8	70.3	75.2	72.0	75.3
\$5,000 - \$7,499	83.0	85.9	84.9	87.6	77.6	81.0	77.0	80.6
\$7,500 - \$9,999	87.4	89.3	88.8	90.6	83.3	85.0	79.7	81.6
\$10,000 - \$12,499	89.8	91.7	90.7	92.5	85.7	88.5	84.6	86.2
\$12,500 - \$14,999	91.0	92.8	92.0	93.7	85.8	88.2	85.3	86.4
\$15,000 - \$19,999	93.0	94.2	94.0	95.2	88.3	89.6	89.6	91.0
\$20,000 - \$24,999	93.9	95.2	94.6	95.8	90.2	92.2	88.4	90.2
\$25,000 - \$29,999	95.6	96.6	95.8	96.7	94.0	95.9	91.3	93.5
\$30,000 - \$34,999	97.1	97.8	97.5	98.2	94.3	95.6	95.3	96.7
\$35,000 - \$39,999	97.5	98.0	97.8	98.3	95.4	96.4	95.9	96.8
\$40,000 - \$49,999	98.1	98.5	98.3	98.7	96.2	96.7	96.9	97.4
\$50,000 - \$59,999	98.1	98.5	98.2	98.6	96.8	97.5	95.7	96.7
\$60,000 - \$74,999	98.6	98.8	98.8	99.0	96.9	97.4	97.5	97.5
\$75,000 +	99.0	99.2	99.0	99.2	99.1	99.1	98.6	98.8
1999 ANNUAL AVERAGE								
TOTAL HOUSEHOLDS	94.2	95.0	95.2	95.9	87.7	89.6	89.9	90.9
UNDER \$5,000	76.0	79.8	79.0	82.6	69.5	74.2	72.8	75.6
\$5,000 - \$7,499	82.9	85.3	84.6	87.0	78.3	81.2	79.8	83.3
\$7,500 - \$9,999	88.3	90.3	89.9	91.5	81.8	85.5	85.0	85.8
\$10,000 - \$12,499	88.9	90.5	90.4	91.8	82.1	84.9	85.2	86.5
\$12,500 - \$14,999	90.3	92.0	91.0	92.4	87.1	89.8	84.8	85.9
\$15,000 - \$19,999	92.5	94.0	93.5	94.7	87.0	90.2	88.3	89.5
\$20,000 - \$24,999	94.1	95.1	94.8	95.7	90.5	92.1	91.5	92.8
\$25,000 - \$29,999	95.3	96.2	95.9	96.6	91.8	93.5	95.2	95.7
\$30,000 - \$34,999	96.7	97.4	97.2	97.7	93.9	95.5	94.7	95.2
\$35,000 - \$39,999	97.3	97.8	97.8	98.2	94.3	95.1	96.1	96.6
\$40,000 - \$49,999	98.2	98.5	98.3	98.6	97.2	97.6	95.8	96.5
\$50,000 - \$59,999	98.2	98.5	98.3	98.7	97.2	97.4	98.1	98.5
\$60,000 - \$74,999	98.6	98.8	98.6	98.9	97.6	98.4	98.2	98.4
\$75,000 +	98.8	99.0	98.9	99.1	97.8	98.2	97.7	98.2
2000 ANNUAL AVERAGE								
TOTAL HOUSEHOLDS	94.4	95.2	95.2	95.9	89.3	90.7	90.5	91.6
UNDER \$5,000	80.0	83.1	83.1	86.2	73.0	76.3	79.0	82.0
\$5,000 - \$7,499	84.2	86.3	85.0	87.0	81.7	84.6	82.4	84.7
\$7,500 - \$9,999	87.0	89.3	88.4	90.3	82.2	85.7	85.8	87.0
\$10,000 - \$12,499	90.0	91.5	90.9	92.5	85.9	87.5	84.0	86.0
\$12,500 - \$14,999	91.5	92.9	92.7	94.0	86.5	87.9	88.0	89.9
\$15,000 - \$19,999	91.7	93.2	92.6	94.1	86.9	89.1	87.2	88.5
\$20,000 - \$24,999	93.7	94.7	94.3	95.2	90.5	92.2	90.8	91.3
\$25,000 - \$29,999	95.5	96.3	96.0	96.8	92.5	93.8	93.0	94.3
\$30,000 - \$34,999	96.4	97.0	96.6	97.2	95.4	96.1	93.7	94.3
\$35,000 - \$39,999	97.2	97.7	97.5	98.0	95.1	95.7	95.4	95.8
\$40,000 - \$49,999	97.7	98.2	97.9	98.4	96.0	96.4	96.7	97.8
\$50,000 - \$59,999	98.0	98.3	98.1	98.4	97.0	97.5	97.6	97.8
\$60,000 - \$74,999	98.4	98.7	98.5	98.8	97.0	97.5	95.9	96.5
\$75,000 +	98.4	98.7	98.5	98.7	97.5	97.7	96.9	97.4

Table 4
Percentage of Households with a Telephone by Income

	RACE						HISPANIC ORIGIN	
	TOTAL		WHITE		BLACK		Unit	Avail
	Unit	Avail	Unit	Avail	Unit	Avail	Unit	Avail
2001 ANNUAL AVERAGE								
TOTAL HOUSEHOLDS	94.9	95.7	95.6	96.4	90.0	91.4	91.3	92.4
UNDER \$5,000	79.9	83.3	83.1	85.7	72.7	78.0	78.8	82.3
\$5,000 - \$7,499	84.0	86.3	85.4	87.5	80.6	83.8	84.4	85.7
\$7,500 - \$9,999	88.8	90.6	90.0	91.6	84.6	87.3	86.5	88.6
\$10,000 - \$12,499	90.2	92.0	91.1	92.8	86.0	88.4	85.8	87.5
\$12,500 - \$14,999	91.4	92.6	92.2	93.3	86.5	88.3	88.4	88.8
\$15,000 - \$19,999	92.9	94.4	93.5	94.9	90.0	92.0	88.8	90.6
\$20,000 - \$24,999	94.3	95.4	94.9	96.0	90.5	92.1	91.3	93.1
\$25,000 - \$29,999	96.0	96.9	96.2	97.0	94.9	96.0	92.6	93.5
\$30,000 - \$34,999	96.7	97.3	97.0	97.5	95.3	96.0	94.9	95.2
\$35,000 - \$39,999	97.2	97.8	97.3	97.9	96.1	96.8	96.0	96.7
\$40,000 - \$49,999	97.8	98.3	97.9	98.4	97.0	97.3	96.0	96.1
\$50,000 - \$59,999	98.4	98.8	98.5	98.9	97.3	97.5	97.3	98.4
\$60,000 - \$74,999	98.6	98.9	98.7	99.0	97.9	98.3	96.5	97.5
\$75,000 +	98.8	99.1	98.8	99.1	98.3	98.6	98.2	98.7
2002 ANNUAL AVERAGE								
TOTAL HOUSEHOLDS	95.3	96.2	96.2	96.9	90.1	91.6	91.7	92.9
UNDER \$5,000	79.9	83.1	82.5	85.2	73.8	78.1	77.8	80.7
\$5,000 - \$7,499	83.3	86.1	85.9	88.6	76.4	79.7	84.5	85.7
\$7,500 - \$9,999	89.7	91.6	91.1	92.7	85.3	87.7	88.4	90.6
\$10,000 - \$12,499	90.6	92.3	91.9	93.3	85.3	87.9	88.1	89.7
\$12,500 - \$14,999	92.7	93.9	93.4	94.6	89.9	91.0	88.6	90.2
\$15,000 - \$19,999	93.2	94.5	93.8	94.8	91.1	93.5	87.7	89.1
\$20,000 - \$24,999	94.3	95.4	95.1	96.2	90.6	92.1	92.3	93.7
\$25,000 - \$29,999	95.6	96.6	96.0	97.0	93.3	94.4	93.4	95.3
\$30,000 - \$34,999	96.9	97.5	97.4	97.9	94.7	95.5	95.2	96.0
\$35,000 - \$39,999	97.9	98.4	98.0	98.6	97.1	97.5	97.4	97.9
\$40,000 - \$49,999	98.2	98.6	98.4	98.8	96.6	97.1	96.7	97.5
\$50,000 - \$59,999	98.7	99.2	98.9	99.2	98.0	98.2	97.9	98.3
\$60,000 - \$74,999	99.1	99.4	99.2	99.5	98.3	98.8	98.3	98.9
\$75,000 +	99.3	99.5	99.3	99.6	98.6	98.7	99.2	99.2
2003 ANNUAL AVERAGE								
TOTAL HOUSEHOLDS	95.1	96.0	95.9	96.6	90.4	91.6	91.4	92.5
UNDER \$5,000	80.1	83.8	82.3	85.9	74.8	79.0	75.0	78.9
\$5,000 - \$7,499	85.3	87.2	85.9	87.6	82.6	85.0	80.2	82.1
\$7,500 - \$9,999	89.6	91.4	90.5	91.9	86.2	89.2	86.7	88.0
\$10,000 - \$12,499	90.3	91.9	91.0	92.7	86.6	88.4	86.3	87.6
\$12,500 - \$14,999	91.7	93.0	92.5	93.8	87.4	88.9	88.1	89.6
\$15,000 - \$19,999	92.9	94.3	93.7	95.0	88.8	90.3	89.5	91.1
\$20,000 - \$24,999	94.1	94.9	94.6	95.4	90.9	91.9	91.8	93.4
\$25,000 - \$29,999	95.6	96.6	95.9	96.8	94.4	95.4	93.5	94.0
\$30,000 - \$34,999	96.5	97.2	96.7	97.6	93.9	94.4	95.0	95.6
\$35,000 - \$39,999	97.7	98.4	97.8	98.5	97.2	97.5	97.1	97.6
\$40,000 - \$49,999	97.9	98.4	98.1	98.6	96.6	97.4	96.2	97.1
\$50,000 - \$59,999	98.5	99.0	98.6	99.1	97.8	98.2	96.8	97.9
\$60,000 - \$74,999	98.7	99.1	98.8	99.2	97.9	98.2	98.3	98.9
\$75,000 +	99.0	99.3	99.1	99.5	97.6	97.8	99.2	99.5

Table 4
Percentage of Households with a Telephone by Income

	RACE						HISPANIC ORIGIN	
	TOTAL		WHITE		BLACK		Unit	Avail
	Unit	Avail	Unit	Avail	Unit	Avail	Unit	Avail
2004 ANNUAL AVERAGE								
TOTAL HOUSEHOLDS	93.8	94.8	94.6	95.5	88.6	90.0	90.3	91.6
UNDER \$5,000	79.1	82.6	82.1	85.4	72.0	75.7	76.9	79.7
\$5,000 - \$7,499	84.3	86.3	84.4	86.3	84.0	86.3	80.8	82.3
\$7,500 - \$9,999	87.8	89.7	88.5	90.4	84.1	86.4	84.5	86.9
\$10,000 - \$12,499	89.7	91.2	90.8	92.1	85.6	87.2	85.7	87.4
\$12,500 - \$14,999	91.5	93.3	92.1	93.8	89.6	91.6	87.2	89.9
\$15,000 - \$19,999	91.5	93.1	92.7	94.1	86.9	89.1	88.5	90.1
\$20,000 - \$24,999	93.7	94.9	94.2	95.3	90.6	92.0	90.0	91.6
\$25,000 - \$29,999	94.5	95.9	95.0	96.1	91.9	94.2	94.1	95.6
\$30,000 - \$34,999	95.1	96.1	95.8	96.6	92.2	93.5	92.4	93.3
\$35,000 - \$39,999	95.8	96.6	96.2	96.9	93.4	94.6	95.3	96.2
\$40,000 - \$49,999	96.7	97.5	96.9	97.7	95.3	96.2	94.2	95.3
\$50,000 - \$59,999	97.3	97.8	97.5	98.0	96.7	96.9	95.7	96.2
\$60,000 - \$74,999	97.6	98.2	97.8	98.3	96.6	97.3	97.3	98.2
\$75,000 +	98.1	98.6	98.2	98.7	98.1	98.1	97.9	98.5
2005 ANNUAL AVERAGE								
TOTAL HOUSEHOLDS	93.1	94.3	93.9	95.0	88.0	89.8	88.8	90.4
UNDER \$5,000	79.9	83.8	82.1	85.9	75.6	79.8	73.5	77.1
\$5,000 - \$7,499	82.8	85.8	83.9	86.7	79.8	83.1	82.2	84.2
\$7,500 - \$9,999	86.7	89.1	87.9	90.0	83.4	86.3	83.4	84.9
\$10,000 - \$12,499	89.2	90.8	90.4	91.8	85.1	86.9	84.7	85.8
\$12,500 - \$14,999	90.4	92.0	91.4	92.9	86.9	89.3	85.8	87.6
\$15,000 - \$19,999	91.3	93.0	92.1	93.8	87.8	89.1	85.6	87.8
\$20,000 - \$24,999	92.8	94.0	93.4	94.5	90.9	92.7	89.1	90.6
\$25,000 - \$29,999	93.8	95.3	94.2	95.5	91.8	94.1	91.2	92.6
\$30,000 - \$34,999	94.5	95.7	95.1	96.2	90.7	92.9	91.1	92.4
\$35,000 - \$39,999	95.1	96.2	95.2	96.3	95.1	96.0	93.0	94.8
\$40,000 - \$49,999	96.0	96.8	96.3	97.2	93.5	94.5	93.3	95.0
\$50,000 - \$59,999	96.8	97.4	97.0	97.6	95.9	96.5	93.2	94.1
\$60,000 - \$74,999	97.5	98.1	97.7	98.3	96.7	97.7	96.7	97.8
\$75,000 - \$99,999	97.6	98.2	97.7	98.3	96.3	96.5	96.7	98.0
\$100,000 - \$149,999	98.0	98.5	98.1	98.7	97.7	98.1	97.3	68.0
\$150,000 +	97.9	98.5	98.1	98.7	95.9	95.9	97.6	66.7
2006 ANNUAL AVERAGE								
TOTAL HOUSEHOLDS	93.6	94.7	94.4	95.4	88.7	90.3	89.1	90.7
UNDER \$5,000	81.2	84.8	83.8	87.2	76.9	80.7	80.0	82.5
\$5,000 - \$7,499	83.5	86.3	85.6	88.1	79.4	82.8	78.5	81.1
\$7,500 - \$9,999	88.4	90.3	89.1	90.9	86.0	87.9	86.0	87.8
\$10,000 - \$12,499	89.4	91.3	90.9	92.6	84.6	87.3	82.5	85.5
\$12,500 - \$14,999	90.5	92.1	91.8	93.2	84.4	86.7	85.7	87.2
\$15,000 - \$19,999	91.4	93.0	92.5	93.9	87.9	89.3	85.9	88.4
\$20,000 - \$24,999	93.4	94.6	94.0	95.1	90.4	92.1	89.3	91.0
\$25,000 - \$29,999	93.6	95.2	94.0	95.5	91.9	93.5	89.6	91.5
\$30,000 - \$34,999	95.0	95.9	95.4	96.2	93.0	94.2	91.6	92.4
\$35,000 - \$39,999	95.4	96.4	95.9	96.9	93.2	94.0	91.3	93.2
\$40,000 - \$49,999	96.0	97.0	96.2	97.1	94.8	95.6	94.3	95.7
\$50,000 - \$59,999	96.8	97.7	96.9	97.9	96.3	97.2	94.4	95.5
\$60,000 - \$74,999	97.6	98.4	97.8	98.5	96.8	97.7	96.7	98.1
\$75,000 - \$99,999	97.6	98.2	97.7	98.3	96.0	97.0	96.1	96.7
\$100,000 - \$149,999	98.2	98.8	98.2	98.8	98.0	98.5	98.8	99.7
\$150,000 +	98.0	98.6	98.0	98.6	96.3	96.4	96.9	97.0

Table 4
Percentage of Households with a Telephone by Income

	RACE						HISPANIC ORIGIN	
	TOTAL		WHITE		BLACK		Unit	Avail
	Unit	Avail	Unit	Avail	Unit	Avail	Unit	Avail
MARCH 2007								
TOTAL HOUSEHOLDS	94.6	95.3	95.4	96.0	89.2	90.6	91.0	92.3
UNDER \$5,000	84.4	87.1	87.1	89.5	76.6	80.6	79.4	82.7
\$5,000 - \$7,499	85.6	87.9	86.4	87.7	82.8	86.5	77.1	79.5
\$7,500 - \$9,999	90.2	91.0	91.8	92.3	85.9	87.0	87.8	89.0
\$10,000 - \$12,499	88.6	89.8	89.9	91.4	84.8	85.8	82.9	86.4
\$12,500 - \$14,999	91.0	91.9	91.8	92.5	87.9	90.0	89.3	89.5
\$15,000 - \$19,999	92.3	93.3	92.6	93.6	91.2	92.3	87.0	89.1
\$20,000 - \$24,999	93.5	94.3	94.2	95.0	88.9	89.4	88.2	90.3
\$25,000 - \$29,999	95.2	96.0	95.6	96.4	93.3	94.1	93.4	93.7
\$30,000 - \$34,999	95.8	96.8	95.8	96.7	95.6	97.0	93.1	93.8
\$35,000 - \$39,999	95.8	96.5	96.2	96.7	92.9	94.7	92.3	93.4
\$40,000 - \$49,999	97.0	97.5	97.4	97.7	94.1	95.7	94.3	95.4
\$50,000 - \$59,999	97.5	98.2	97.8	98.5	94.3	95.9	96.6	97.7
\$60,000 - \$74,999	97.9	98.2	98.0	98.4	95.9	96.3	97.9	98.7
\$75,000 - \$99,999	98.6	99.1	98.6	99.1	98.3	98.6	98.0	99.2
\$100,000 - \$149,999	98.6	99.0	98.8	99.1	95.7	97.3	97.5	97.5
\$150,000 +	98.9	99.2	99.1	99.3	98.4	98.4	100.0	100.0
JULY 2007								
TOTAL HOUSEHOLDS	95.0	95.8	95.7	96.5	90.5	91.7	91.0	92.5
UNDER \$5,000	82.2	85.2	86.5	89.2	73.1	77.2	84.7	86.2
\$5,000 - \$7,499	85.7	87.4	86.6	89.0	83.5	84.1	79.2	80.7
\$7,500 - \$9,999	87.9	89.8	89.0	90.3	84.6	88.8	87.0	90.5
\$10,000 - \$12,499	90.9	92.3	91.7	92.6	87.9	90.5	83.9	86.0
\$12,500 - \$14,999	93.1	93.9	93.7	94.6	90.7	91.3	91.8	93.0
\$15,000 - \$19,999	93.2	94.2	93.1	94.0	94.1	95.3	85.4	87.4
\$20,000 - \$24,999	95.3	96.2	95.6	96.7	94.1	94.1	92.2	94.0
\$25,000 - \$29,999	95.6	96.3	95.9	96.7	94.0	94.9	92.4	93.3
\$30,000 - \$34,999	95.6	96.9	95.9	97.3	94.9	95.6	90.3	93.0
\$35,000 - \$39,999	95.9	96.7	96.3	97.0	92.9	94.0	91.6	93.2
\$40,000 - \$49,999	97.1	97.9	97.5	98.1	95.9	97.1	95.9	97.1
\$50,000 - \$59,999	97.8	98.4	97.9	98.5	96.8	98.4	96.7	97.6
\$60,000 - \$74,999	98.0	98.5	98.0	98.6	96.9	96.9	96.4	98.1
\$75,000 - \$99,999	98.6	99.0	98.8	99.1	96.6	97.0	98.1	98.2
\$100,000 - \$149,999	99.0	99.2	99.2	99.4	97.6	97.6	97.8	97.8
\$150,000 +	99.0	99.2	99.1	99.4	96.5	96.5	100.0	100.0
NOVEMBER 2007								
TOTAL HOUSEHOLDS	94.9	95.8	95.7	96.5	89.9	91.3	90.6	91.8
UNDER \$5,000	84.4	87.5	85.9	89.1	80.8	84.5	76.3	80.8
\$5,000 - \$7,499	85.4	86.8	86.3	88.1	81.2	81.9	78.3	80.9
\$7,500 - \$9,999	88.9	90.5	90.6	92.1	83.8	85.9	82.2	84.8
\$10,000 - \$12,499	89.1	91.1	90.6	92.2	84.6	87.4	82.3	83.3
\$12,500 - \$14,999	92.2	93.1	92.6	93.6	88.5	89.5	84.3	86.0
\$15,000 - \$19,999	92.1	93.4	93.0	94.1	90.4	91.8	82.7	86.0
\$20,000 - \$24,999	93.7	94.8	94.1	95.1	90.3	92.2	89.4	91.1
\$25,000 - \$29,999	94.6	95.4	94.4	95.1	94.7	95.9	90.9	91.3
\$30,000 - \$34,999	96.3	97.2	96.9	97.5	92.4	95.2	95.4	95.7
\$35,000 - \$39,999	96.5	97.0	96.9	97.4	92.5	93.5	95.2	95.7
\$40,000 - \$49,999	97.5	98.3	97.8	98.5	95.4	96.7	94.5	95.3
\$50,000 - \$59,999	97.6	98.5	97.7	98.6	96.6	98.0	97.2	97.6
\$60,000 - \$74,999	98.6	98.9	98.7	99.0	97.5	97.8	95.5	96.6
\$75,000 - \$99,999	98.8	99.2	99.0	99.4	98.0	99.4	98.3	98.7
\$100,000 - \$149,999	98.7	99.3	99.0	99.5	96.7	97.4	98.3	98.3
\$150,000 +	99.0	99.3	99.0	99.3	98.3	98.3	99.3	99.3

Table 4
Percentage of Households with a Telephone by Income

	RACE						HISPANIC ORIGIN	
	TOTAL		WHITE		BLACK		Unit	Avail
	Unit	Avail	Unit	Avail	Unit	Avail	Unit	Avail
2007 ANNUAL AVERAGE								
TOTAL HOUSEHOLDS	94.8	95.6	95.6	96.3	89.9	91.2	90.9	92.2
UNDER \$5,000	83.6	86.6	86.5	89.2	76.8	80.8	80.1	83.2
\$5,000 - \$7,499	85.5	87.4	86.4	88.3	82.5	84.1	78.2	80.4
\$7,500 - \$9,999	89.0	90.5	90.5	91.6	84.8	87.2	85.6	88.1
\$10,000 - \$12,499	89.5	91.1	90.7	92.0	85.8	87.9	83.0	85.2
\$12,500 - \$14,999	92.1	92.9	92.7	93.6	89.0	90.3	88.5	89.5
\$15,000 - \$19,999	92.5	93.6	92.9	93.9	91.9	93.1	85.0	87.5
\$20,000 - \$24,999	94.1	95.1	94.6	95.6	91.1	91.9	89.9	91.8
\$25,000 - \$29,999	95.1	95.9	95.3	96.1	94.0	95.0	92.2	92.8
\$30,000 - \$34,999	95.9	97.0	96.2	97.1	94.3	95.9	92.9	94.2
\$35,000 - \$39,999	96.0	96.7	96.5	97.0	92.7	94.1	93.0	94.1
\$40,000 - \$49,999	97.2	97.9	97.6	98.1	95.1	96.5	94.9	95.9
\$50,000 - \$59,999	97.6	98.4	97.8	98.5	95.9	97.4	96.8	97.6
\$60,000 - \$74,999	98.1	98.6	98.3	98.7	96.7	97.0	96.6	97.8
\$75,000 - \$99,999	98.7	99.1	98.8	99.2	97.7	98.3	98.1	98.7
\$100,000 - \$149,999	98.8	99.2	99.0	99.3	96.6	97.5	97.9	97.9
\$150,000 +	99.0	99.2	99.0	99.3	97.7	97.7	99.8	99.8
MARCH 2008								
TOTAL HOUSEHOLDS	95.2	95.9	95.8	96.4	91.3	92.3	91.6	92.5
UNDER \$5,000	83.0	85.5	84.9	87.5	80.7	82.3	74.7	78.9
\$5,000 - \$7,499	86.6	88.5	87.6	89.3	83.5	86.2	83.8	86.6
\$7,500 - \$9,999	89.0	90.1	89.6	90.6	86.9	87.9	86.3	88.1
\$10,000 - \$12,499	90.8	91.9	90.7	91.8	89.0	90.8	85.7	87.8
\$12,500 - \$14,999	93.5	94.3	93.6	94.6	93.5	93.5	88.8	90.7
\$15,000 - \$19,999	94.2	94.5	94.9	95.1	91.7	92.1	91.3	91.3
\$20,000 - \$24,999	94.6	95.3	95.1	95.7	92.5	93.5	92.7	92.7
\$25,000 - \$29,999	95.0	96.2	95.4	96.4	93.1	95.5	92.4	93.2
\$30,000 - \$34,999	96.6	97.1	96.8	97.3	95.0	95.0	94.2	95.1
\$35,000 - \$39,999	96.1	97.0	96.3	97.0	93.4	96.4	91.9	93.0
\$40,000 - \$49,999	96.9	97.5	97.2	97.7	94.4	95.3	95.0	95.9
\$50,000 - \$59,999	97.7	98.3	97.9	98.4	96.5	97.2	96.1	97.3
\$60,000 - \$74,999	98.3	98.8	98.6	99.0	94.8	95.9	97.9	98.4
\$75,000 - \$99,999	98.8	99.0	99.0	99.3	97.2	97.2	97.5	98.1
\$100,000 - \$149,999	98.8	99.3	98.8	99.3	98.4	98.4	99.4	99.7
\$150,000 +	98.9	99.4	98.8	99.3	99.9	100.0	99.9	99.9
JULY 2008								
TOTAL HOUSEHOLDS	95.4	96.1	96.1	96.7	91.0	92.0	92.0	93.1
UNDER \$5,000	84.1	86.8	85.4	88.0	78.8	82.4	76.4	80.6
\$5,000 - \$7,499	88.0	90.2	88.4	91.0	87.1	88.3	86.5	89.6
\$7,500 - \$9,999	90.3	92.4	90.6	91.9	91.0	93.1	89.6	91.1
\$10,000 - \$12,499	92.3	93.5	93.1	94.1	90.1	91.1	86.9	89.0
\$12,500 - \$14,999	91.8	93.2	92.4	93.5	89.4	90.6	82.5	85.9
\$15,000 - \$19,999	93.9	94.4	95.0	95.5	88.3	89.0	92.3	92.7
\$20,000 - \$24,999	95.9	96.4	96.4	97.1	92.8	92.8	94.0	94.7
\$25,000 - \$29,999	94.8	95.8	94.8	96.0	94.8	95.4	89.4	91.2
\$30,000 - \$34,999	95.2	96.2	95.9	96.7	91.2	92.3	93.5	95.0
\$35,000 - \$39,999	97.4	97.8	97.6	98.1	95.7	96.1	96.9	96.9
\$40,000 - \$49,999	97.4	98.0	97.5	98.0	97.2	97.9	95.6	96.4
\$50,000 - \$59,999	98.5	98.9	98.7	99.1	96.4	96.9	95.1	96.5
\$60,000 - \$74,999	98.2	98.5	98.5	98.8	94.3	94.7	98.0	98.0
\$75,000 - \$99,999	98.9	99.1	99.2	99.4	97.3	98.2	99.7	99.7
\$100,000 - \$149,999	98.8	99.3	98.9	99.4	96.0	97.2	98.6	99.2
\$150,000 +	98.8	99.1	98.9	99.2	98.5	98.5	97.8	99.1

Table 4
Percentage of Households with a Telephone by Income

	RACE						HISPANIC ORIGIN	
	TOTAL		WHITE		BLACK		Unit	Avail
	Unit	Avail	Unit	Avail	Unit	Avail	Unit	Avail
NOVEMBER 2008								
TOTAL HOUSEHOLDS	95.0	95.7	95.8	96.4	90.6	91.6	91.4	92.4
UNDER \$5,000	82.8	85.6	87.0	89.5	76.4	79.6	79.1	83.3
\$5,000 - \$7,499	86.8	88.0	88.7	90.3	82.4	83.1	83.5	86.6
\$7,500 - \$9,999	88.9	89.9	89.7	90.7	85.0	86.1	82.1	83.0
\$10,000 - \$12,499	90.8	92.2	91.4	92.9	88.6	89.3	83.8	86.4
\$12,500 - \$14,999	92.7	93.6	93.4	94.1	90.7	92.5	90.7	90.7
\$15,000 - \$19,999	92.9	94.0	93.5	94.7	89.6	90.9	90.7	91.8
\$20,000 - \$24,999	93.9	94.5	94.5	94.8	89.5	91.9	89.5	90.1
\$25,000 - \$29,999	95.1	95.9	95.5	96.4	92.0	92.5	90.4	91.7
\$30,000 - \$34,999	95.5	96.0	95.9	96.5	93.3	93.7	94.1	94.4
\$35,000 - \$39,999	96.8	97.5	97.2	97.9	94.2	94.7	95.0	95.6
\$40,000 - \$49,999	97.3	98.1	97.5	98.3	97.1	98.1	97.3	97.8
\$50,000 - \$59,999	97.6	98.3	97.9	98.6	95.9	96.8	94.4	95.9
\$60,000 - \$74,999	98.3	98.7	98.4	98.8	98.4	98.4	96.7	97.9
\$75,000 - \$99,999	98.2	98.6	98.5	98.9	95.5	96.0	98.1	99.0
\$100,000 - \$149,999	99.0	99.3	99.0	99.2	99.6	100.0	98.9	99.5
\$150,000 +	99.0	99.3	99.0	99.3	97.6	97.6	98.9	99.0
2008 ANNUAL AVERAGE								
TOTAL HOUSEHOLDS	95.2	95.9	95.9	96.5	91.0	91.9	91.7	92.7
UNDER \$5,000	83.3	86.0	85.7	88.3	78.6	81.5	76.7	80.9
\$5,000 - \$7,499	87.1	88.9	88.2	90.2	84.4	85.9	84.6	87.6
\$7,500 - \$9,999	89.4	90.8	90.0	91.1	87.6	89.0	86.0	87.4
\$10,000 - \$12,499	91.3	92.5	91.7	92.9	89.2	90.4	85.5	87.8
\$12,500 - \$14,999	92.7	93.7	93.1	94.1	91.2	92.2	87.3	89.1
\$15,000 - \$19,999	93.6	94.3	94.5	95.1	89.8	90.7	91.4	91.9
\$20,000 - \$24,999	94.8	95.4	95.3	95.9	91.6	92.7	92.1	92.5
\$25,000 - \$29,999	95.0	96.0	95.3	96.2	93.3	94.4	90.7	92.0
\$30,000 - \$34,999	95.8	96.4	96.2	96.8	93.2	93.7	93.9	94.8
\$35,000 - \$39,999	96.7	97.5	97.1	97.7	94.4	95.7	94.6	95.1
\$40,000 - \$49,999	97.2	97.9	97.4	98.0	96.2	97.1	96.0	96.7
\$50,000 - \$59,999	97.9	98.5	98.2	98.7	96.3	97.0	95.2	96.6
\$60,000 - \$74,999	98.2	98.6	98.5	98.9	95.9	96.4	97.6	98.1
\$75,000 - \$99,999	98.6	98.9	98.9	99.2	96.7	97.1	98.4	98.9
\$100,000 - \$149,999	98.8	99.3	98.9	99.3	98.0	98.5	99.0	99.5
\$150,000 +	98.9	99.3	98.9	99.3	98.6	98.7	98.9	99.3
MARCH 2009								
TOTAL HOUSEHOLDS	95.6	96.3	96.2	96.8	92.4	93.5	92.3	93.2
UNDER \$5,000	86.1	88.4	87.9	89.6	81.0	84.5	81.9	83.2
\$5,000 - \$7,499	90.4	91.5	90.1	91.0	90.3	91.8	88.3	88.3
\$7,500 - \$9,999	91.1	92.4	92.4	93.9	87.6	88.2	89.6	91.5
\$10,000 - \$12,499	91.2	92.7	91.8	92.9	91.2	92.0	89.3	91.6
\$12,500 - \$14,999	92.7	93.9	93.4	94.5	87.9	90.2	88.5	90.1
\$15,000 - \$19,999	94.9	95.8	95.4	96.3	93.2	93.8	92.0	93.6
\$20,000 - \$24,999	95.0	95.7	95.2	95.7	94.4	95.7	89.5	89.9
\$25,000 - \$29,999	95.9	96.4	96.4	97.0	94.0	94.9	94.5	95.2
\$30,000 - \$34,999	96.3	97.2	96.6	97.2	96.1	97.2	92.4	93.4
\$35,000 - \$39,999	97.1	97.4	96.9	97.2	97.9	98.2	94.8	95.4
\$40,000 - \$49,999	98.1	98.6	98.3	98.6	96.7	98.8	97.5	97.6
\$50,000 - \$59,999	97.9	98.4	98.1	98.6	96.3	97.0	96.2	97.0
\$60,000 - \$74,999	98.3	98.6	98.4	98.7	98.3	98.3	97.7	98.1
\$75,000 - \$99,999	98.4	99.1	98.5	99.1	98.0	99.2	98.7	99.6
\$100,000 - \$149,999	99.0	99.4	99.1	99.4	97.8	98.1	99.4	100.0
\$150,000 +	99.6	99.7	99.6	99.8	97.3	98.3	98.7	98.7

Table 4
Percentage of Households with a Telephone by Income

	RACE						HISPANIC ORIGIN	
	TOTAL		WHITE		BLACK		Unit	Avail
	Unit	Avail	Unit	Avail	Unit	Avail	Unit	Avail
JULY 2009								
TOTAL HOUSEHOLDS	95.7	96.3	96.4	96.9	92.2	93.2	92.6	93.4
UNDER \$5,000	86.2	88.0	87.8	89.3	83.9	86.5	82.6	84.1
\$5,000 - \$7,499	85.9	87.8	87.3	88.7	84.9	87.0	82.9	84.0
\$7,500 - \$9,999	90.6	92.3	90.3	92.3	92.3	93.2	86.6	87.8
\$10,000 - \$12,499	91.8	92.6	92.3	93.0	90.7	91.5	89.1	90.0
\$12,500 - \$14,999	93.3	94.5	94.5	95.2	87.8	90.3	92.8	94.0
\$15,000 - \$19,999	94.7	95.3	96.1	96.6	88.1	89.1	92.7	94.7
\$20,000 - \$24,999	96.0	96.6	96.0	96.6	96.2	97.4	92.0	93.1
\$25,000 - \$29,999	96.3	96.7	96.3	96.7	96.0	96.4	91.9	92.6
\$30,000 - \$34,999	96.5	97.0	96.7	97.0	95.9	96.8	93.5	94.2
\$35,000 - \$39,999	97.4	98.1	97.7	98.4	95.3	96.0	96.5	97.4
\$40,000 - \$49,999	97.4	98.0	97.3	98.0	96.8	97.2	94.7	96.2
\$50,000 - \$59,999	98.5	98.8	98.9	99.1	96.7	97.8	97.5	97.7
\$60,000 - \$74,999	98.6	98.8	98.7	98.8	97.6	98.0	98.3	98.3
\$75,000 - \$99,999	98.6	99.1	98.8	99.2	99.5	99.5	97.2	97.7
\$100,000 - \$149,999	99.1	99.4	99.3	99.5	97.5	98.1	99.1	99.1
\$150,000 +	99.2	99.4	99.2	99.4	99.2	100.0	96.0	96.1

Table 5
Percentage of Households with a Telephone by Household Size

	RACE						HISPANIC ORIGIN	
	TOTAL		WHITE		BLACK		Unit	Avail
	Unit	Avail	Unit	Avail	Unit	Avail	Unit	Avail
NOVEMBER 1983								
TOTAL HOUSEHOLDS	91.4	93.7	93.1	95.0	78.8	83.9	80.7	84.6
1 PERSON	87.5	91.3	90.2	93.7	71.2	77.1	73.8	82.0
2 - 3	93.3	95.0	94.5	95.9	82.5	87.8	80.7	84.3
4 - 5	92.4	94.2	93.6	95.0	83.1	87.3	83.4	86.2
6 +	86.6	88.9	90.5	92.2	74.5	78.5	81.0	84.0
1984 ANNUAL AVERAGE								
TOTAL HOUSEHOLDS	91.6	93.7	93.2	94.9	79.8	84.5	80.9	84.3
1 PERSON	88.3	91.8	90.3	93.4	74.9	80.7	72.9	79.4
2 - 3	93.2	94.9	94.5	95.9	82.3	86.8	82.0	85.2
4 - 5	92.5	94.0	93.9	95.1	81.8	85.7	83.9	86.2
6 +	86.9	88.8	89.8	91.1	76.3	80.1	79.2	81.8
1985 ANNUAL AVERAGE								
TOTAL HOUSEHOLDS	91.8	93.9	93.3	95.0	81.1	85.2	81.3	84.4
1 PERSON	87.6	91.2	89.9	93.1	73.6	79.8	71.9	78.5
2 - 3	93.5	95.0	94.5	95.8	84.9	87.9	83.6	86.0
4 - 5	94.2	95.3	95.2	96.1	87.6	90.4	85.6	87.0
6 +	90.3	91.8	92.8	93.6	81.3	84.9	85.6	86.1
1986 ANNUAL AVERAGE								
TOTAL HOUSEHOLDS	92.3	94.1	93.7	95.2	81.6	85.9	81.4	84.1
1 PERSON	88.1	91.4	90.4	93.2	75.4	81.0	73.9	79.3
2 - 3	94.0	95.3	95.0	96.1	85.3	88.9	83.1	85.4
4 - 5	94.4	95.3	95.4	96.1	87.9	90.4	85.5	86.7
6 +	90.1	91.5	92.9	93.5	77.8	82.8	83.3	84.1
1987 ANNUAL AVERAGE								
TOTAL HOUSEHOLDS	92.4	94.2	93.8	95.4	81.8	85.9	83.0	85.4
1 PERSON	89.5	92.7	91.3	94.1	77.8	83.1	79.5	83.5
2 - 3	93.9	95.3	95.1	96.3	83.9	87.3	83.8	86.3
4 - 5	93.0	94.5	94.3	95.4	83.6	87.4	84.4	86.4
6 +	87.4	89.1	89.8	91.0	77.4	81.5	80.6	81.6
1988 ANNUAL AVERAGE								
TOTAL HOUSEHOLDS	92.7	94.5	94.1	95.6	83.0	86.8	82.1	85.1
1 PERSON	88.4	91.7	90.6	93.5	76.4	82.0	74.4	79.5
2 - 3	94.5	95.7	95.4	96.4	86.8	89.7	84.2	86.9
4 - 5	94.9	95.8	95.8	96.5	89.0	90.7	84.4	85.6
6 +	92.8	94.3	93.7	94.9	87.2	90.6	86.1	88.0
1989 ANNUAL AVERAGE								
TOTAL HOUSEHOLDS	93.1	94.9	94.5	95.9	83.2	87.1	83.0	86.0
1 PERSON	90.0	93.0	91.9	94.6	79.1	83.8	75.5	81.3
2 - 3	94.5	95.8	95.6	96.7	85.8	89.3	84.3	87.3
4 - 5	94.5	95.5	95.7	96.4	85.7	88.8	86.9	88.5
6 +	90.5	92.0	92.7	93.8	82.4	85.8	84.9	86.5

Table 5
Percentage of Households with a Telephone by Household Size

	RACE						HISPANIC ORIGIN	
	TOTAL		WHITE		BLACK		Unit	Avail
	Unit	Avail	Unit	Avail	Unit	Avail	Unit	Avail
1990 ANNUAL AVERAGE								
TOTAL HOUSEHOLDS	93.3	95.0	94.6	96.1	83.5	87.0	82.7	85.3
1 PERSON	90.9	93.7	92.5	95.1	80.2	84.8	76.2	80.5
2 - 3	94.7	96.0	95.8	96.9	86.0	89.0	84.2	86.7
4 - 5	93.6	95.0	95.0	96.1	84.0	87.1	84.6	86.8
6 +	87.8	89.6	90.2	91.5	78.5	81.8	80.6	81.8
1991 ANNUAL AVERAGE								
TOTAL HOUSEHOLDS	93.4	95.1	94.8	96.2	83.5	87.2	84.1	87.7
1 PERSON	91.1	93.9	92.8	95.3	79.8	84.9	77.7	83.3
2 - 3	94.9	96.2	96.0	97.1	85.8	88.9	86.2	88.4
4 - 5	93.7	95.0	95.1	96.1	84.3	87.4	85.1	87.5
6 +	88.8	90.4	90.5	91.8	81.0	83.9	82.0	83.3
1992 ANNUAL AVERAGE								
TOTAL HOUSEHOLDS	93.8	95.3	95.2	96.4	84.2	87.9	85.8	88.2
1 PERSON	91.8	94.1	93.4	95.4	81.4	86.1	81.3	85.4
2 - 3	95.1	96.3	96.2	97.2	86.1	89.2	86.3	88.9
4 - 5	93.9	95.2	95.3	96.2	84.4	88.0	87.4	89.2
6 +	89.9	91.4	91.7	92.7	82.8	85.4	85.7	86.6
1993 ANNUAL AVERAGE								
TOTAL HOUSEHOLDS	94.2	95.6	95.5	96.6	85.2	88.3	86.7	88.8
1 PERSON	92.3	94.6	93.9	95.8	82.5	86.8	81.9	86.4
2 - 3	95.3	96.4	96.3	97.2	87.1	89.6	87.3	89.1
4 - 5	94.5	95.6	95.9	96.7	85.7	88.3	88.4	90.2
6 +	89.9	91.5	92.0	93.0	81.2	84.9	85.7	87.1
1994 ANNUAL AVERAGE								
TOTAL HOUSEHOLDS	93.8	95.4	95.1	96.4	85.7	89.4	86.0	88.3
1 PERSON	91.8	94.2	93.4	95.4	82.2	86.7	82.1	85.9
2 - 3	95.0	96.2	96.0	97.0	87.9	91.1	86.6	88.9
4 - 5	94.2	95.6	95.5	96.6	86.6	89.9	88.1	89.5
6 +	89.4	91.7	91.3	93.1	82.3	86.9	83.4	85.9
1995 ANNUAL AVERAGE								
TOTAL HOUSEHOLDS	93.9	95.2	95.2	96.2	86.2	89.2	85.9	87.8
1 PERSON	91.6	93.4	93.2	94.6	82.1	85.9	80.6	82.7
2 - 3	95.2	96.1	96.2	96.9	88.2	90.7	86.4	88.2
4 - 5	94.5	95.6	95.6	96.5	87.9	90.5	88.0	89.8
6 +	90.4	92.3	92.0	93.6	84.4	87.8	85.2	87.1
1996 ANNUAL AVERAGE								
TOTAL HOUSEHOLDS	93.9	95.0	94.9	95.8	87.3	89.8	86.4	88.0
1 PERSON	91.5	93.1	92.7	94.2	83.8	86.5	80.5	83.4
2 - 3	95.2	96.1	96.1	96.7	88.9	91.5	87.5	88.9
4 - 5	94.5	95.5	95.3	96.1	88.9	91.3	87.8	89.5
6 +	89.8	91.1	91.1	92.1	84.6	87.5	85.4	86.5

Table 5
Percentage of Households with a Telephone by Household Size

	RACE						HISPANIC ORIGIN	
	TOTAL		WHITE		BLACK		Unit	Avail
	Unit	Avail	Unit	Avail	Unit	Avail	Unit	Avail
1997 ANNUAL AVERAGE								
TOTAL HOUSEHOLDS	93.9	95.0	95.0	95.9	86.9	89.5	86.7	88.6
1 PERSON	91.4	93.1	92.8	94.3	83.3	86.3	80.1	83.7
2 - 3	95.0	96.0	95.9	96.6	89.2	91.4	87.6	89.4
4 - 5	94.8	95.8	95.9	96.6	87.9	90.5	89.1	90.3
6 +	90.3	91.7	91.9	92.9	83.0	86.2	85.7	87.6
1998 ANNUAL AVERAGE								
TOTAL HOUSEHOLDS	94.1	95.2	95.1	96.0	87.9	89.7	88.4	90.0
1 PERSON	91.4	92.9	92.9	94.3	82.8	85.2	81.9	84.5
2 - 3	95.4	96.2	96.1	96.8	90.5	92.1	89.5	91.0
4 - 5	94.9	95.7	95.7	96.4	89.5	90.9	89.9	91.3
6 +	91.8	92.9	92.7	93.6	87.9	89.9	88.4	89.4
1999 ANNUAL AVERAGE								
TOTAL HOUSEHOLDS	94.2	95.0	95.2	95.9	87.7	89.6	89.9	90.9
1 PERSON	90.9	92.4	92.6	93.8	82.1	84.9	82.7	84.4
2 - 3	95.4	96.1	96.1	96.7	90.3	91.8	90.1	91.3
4 - 5	95.6	96.2	96.4	96.9	90.6	92.0	92.5	93.4
6 +	92.2	93.4	93.4	94.4	85.9	88.5	90.3	90.8
2000 ANNUAL AVERAGE								
TOTAL HOUSEHOLDS	94.4	95.2	95.2	95.9	89.3	90.7	90.5	91.6
1 PERSON	91.5	92.8	92.8	94.0	84.4	86.5	84.0	86.2
2 - 3	95.4	96.1	96.0	96.6	91.0	92.1	90.5	91.6
4 - 5	95.6	96.2	96.2	96.7	91.7	92.9	92.6	93.4
6 +	93.4	94.4	93.8	94.7	91.5	92.7	92.1	93.0
2001 ANNUAL AVERAGE								
TOTAL HOUSEHOLDS	94.9	95.7	95.6	96.4	90.0	91.4	91.3	92.4
1 PERSON	92.0	93.4	93.1	94.4	85.8	87.8	84.9	87.1
2 - 3	95.8	96.4	96.4	96.9	91.7	93.0	91.2	92.2
4 - 5	96.3	96.9	96.8	97.5	92.2	93.2	93.8	94.7
6 +	94.2	95.0	94.8	95.4	91.3	92.6	92.2	92.7
2002 ANNUAL AVERAGE								
TOTAL HOUSEHOLDS	95.3	96.2	96.2	96.9	90.1	91.6	91.7	92.9
1 PERSON	92.7	94.0	94.0	95.2	85.7	87.5	86.7	88.2
2 - 3	96.2	96.9	96.9	97.5	91.8	93.1	91.5	92.7
4 - 5	96.6	97.3	97.1	97.7	92.8	94.1	93.8	94.8
6 +	94.9	95.7	95.4	96.1	92.1	93.4	93.1	94.1
2003 ANNUAL AVERAGE								
TOTAL HOUSEHOLDS	95.1	96.0	95.9	96.6	90.4	91.6	91.4	92.5
1 PERSON	92.1	93.4	93.3	94.6	85.3	86.8	83.6	85.8
2 - 3	96.2	96.9	96.8	97.4	92.2	93.3	92.0	93.1
4 - 5	96.7	97.2	97.1	97.6	93.8	94.7	94.0	94.6
6 +	94.4	95.1	95.0	95.6	91.5	92.8	92.5	93.4

Table 5
Percentage of Households with a Telephone by Household Size

	RACE						HISPANIC ORIGIN	
	TOTAL		WHITE		BLACK		Unit	Avail
	Unit	Avail	Unit	Avail	Unit	Avail	Unit	Avail
2004 ANNUAL AVERAGE								
TOTAL HOUSEHOLDS	93.8	94.8	94.6	95.5	88.6	90.0	90.3	91.6
1 PERSON	90.2	91.8	91.6	93.1	83.1	84.8	83.0	85.4
2 - 3	95.0	95.8	95.7	96.4	90.4	91.8	90.7	92.0
4 - 5	95.7	96.3	96.2	96.7	92.0	93.4	92.9	93.7
6 +	94.3	95.0	94.5	95.2	93.1	93.8	92.4	93.2
2005 ANNUAL AVERAGE								
TOTAL HOUSEHOLDS	93.1	94.3	93.9	95.0	88.0	89.8	88.8	90.4
1 PERSON	89.9	91.6	91.3	92.8	83.3	85.5	83.0	85.2
2 - 3	94.2	95.2	94.8	95.8	89.9	91.4	88.7	90.3
4 - 5	94.6	95.5	95.2	96.0	91.1	92.3	91.1	92.4
6 +	93.5	94.7	94.1	95.1	90.3	92.8	91.3	92.4
2006 ANNUAL AVERAGE								
TOTAL HOUSEHOLDS	93.6	94.7	94.4	95.4	88.7	90.3	89.1	90.7
1 PERSON	90.4	92.0	91.6	93.1	84.3	86.3	81.9	84.7
2 - 3	94.7	95.7	95.4	96.3	90.0	91.5	89.4	91.0
4 - 5	95.2	96.0	95.6	96.4	92.5	93.6	91.4	92.5
6 +	94.2	94.9	94.6	95.3	91.9	92.4	93.0	93.9
MARCH 2007								
TOTAL HOUSEHOLDS	94.6	95.3	95.4	96.0	89.2	90.6	91.0	92.3
1 PERSON	92.0	93.0	93.1	94.1	85.8	87.2	86.2	88.1
2 - 3	95.4	96.0	96.1	96.6	90.0	91.4	90.8	92.3
4 - 5	96.1	96.8	96.6	97.2	92.8	93.8	93.0	93.9
6 +	94.8	95.8	95.5	96.4	92.0	93.3	93.2	94.6
JULY 2007								
TOTAL HOUSEHOLDS	95.0	95.8	95.7	96.5	90.5	91.7	91.0	92.5
1 PERSON	92.2	93.6	93.4	94.8	86.2	87.9	85.9	88.0
2 - 3	95.8	96.4	96.4	97.0	92.0	93.1	90.6	91.8
4 - 5	96.7	97.2	97.2	97.7	93.3	94.2	93.8	95.5
6 +	94.9	95.5	94.9	95.6	92.6	93.6	92.5	93.6
NOVEMBER 2007								
TOTAL HOUSEHOLDS	94.9	95.8	95.7	96.5	89.9	91.3	90.6	91.8
1 PERSON	91.8	93.2	93.2	94.4	84.8	86.3	82.7	84.8
2 - 3	95.9	96.6	96.5	97.1	92.3	93.7	90.9	91.9
4 - 5	96.7	97.3	97.2	97.7	93.0	94.4	93.6	94.6
6 +	95.0	95.5	95.4	95.9	91.1	92.0	93.9	94.5
2007 ANNUAL AVERAGE								
TOTAL HOUSEHOLDS	94.8	95.6	95.6	96.3	89.9	91.2	90.9	92.2
1 PERSON	92.0	93.3	93.2	94.4	85.6	87.1	84.9	87.0
2 - 3	95.7	96.3	96.4	96.9	91.4	92.7	90.8	92.0
4 - 5	96.5	97.1	97.0	97.5	93.0	94.1	93.5	94.7
6 +	94.9	95.6	95.3	96.0	91.9	92.9	93.2	94.2

Table 5
Percentage of Households with a Telephone by Household Size

	RACE						HISPANIC ORIGIN	
	TOTAL		WHITE		BLACK		Unit	Avail
	Unit	Avail	Unit	Avail	Unit	Avail	Unit	Avail
MARCH 2008								
TOTAL HOUSEHOLDS	95.2	95.9	95.8	96.4	91.3	92.3	91.6	92.5
1 PERSON	92.7	93.7	93.5	94.5	88.1	89.1	86.7	88.0
2 - 3	96.1	96.6	96.6	97.1	93.0	93.8	91.4	92.1
4 - 5	96.5	97.1	97.1	97.6	92.7	94.0	94.1	95.0
6 +	95.4	95.9	96.0	96.5	92.6	93.1	93.2	94.2
JULY 2008								
TOTAL HOUSEHOLDS	95.4	96.1	96.1	96.7	91.0	92.0	92.0	93.1
1 PERSON	93.0	94.1	94.2	95.2	87.0	88.2	87.4	89.3
2 - 3	96.1	96.7	96.6	97.1	92.7	93.5	91.8	93.0
4 - 5	96.8	97.3	97.2	97.6	93.7	94.6	94.0	95.0
6 +	95.4	95.9	96.3	96.6	91.3	93.0	94.0	94.5
NOVEMBER 2008								
TOTAL HOUSEHOLDS	95.0	95.7	95.8	96.4	90.6	91.6	91.4	92.4
1 PERSON	92.7	93.7	93.7	94.7	87.3	88.4	85.1	86.4
2 - 3	95.8	96.4	96.4	97.0	91.9	92.7	91.6	92.9
4 - 5	96.5	97.0	97.1	97.5	93.2	94.0	94.0	94.4
6+	94.8	95.4	95.0	95.6	93.1	93.6	92.8	94.1
2008 ANNUAL AVERAGE								
TOTAL HOUSEHOLDS	95.2	95.9	95.9	96.5	91.0	91.9	91.7	92.7
1 PERSON	92.8	93.8	93.8	94.8	87.5	88.6	86.4	87.9
2 - 3	96.0	96.6	96.6	97.1	92.6	93.3	91.6	92.7
4 - 5	96.6	97.1	97.1	97.5	93.2	94.2	94.0	94.8
6+	95.2	95.7	95.8	96.2	92.3	93.3	93.4	94.3
MARCH 2009								
TOTAL HOUSEHOLDS	95.6	96.3	96.2	96.8	92.4	93.5	92.3	93.2
1 PERSON	93.4	94.3	94.3	95.1	89.2	90.0	86.0	87.0
2 - 3	96.3	96.9	96.7	97.2	93.2	94.7	92.6	93.6
4 - 5	97.0	97.5	97.5	97.8	95.2	95.8	94.7	95.3
6 +	96.0	96.7	96.5	96.9	94.6	96.6	94.8	95.9
JULY 2009								
TOTAL HOUSEHOLDS	95.7	96.3	96.4	96.9	92.2	93.2	92.6	93.4
1 PERSON	93.5	94.5	94.4	95.3	89.1	90.4	86.9	88.0
2 - 3	96.5	97.0	97.1	97.4	93.1	94.0	93.0	93.9
4 - 5	96.8	97.1	97.2	97.5	94.6	95.6	94.8	95.4
6 +	95.7	96.0	95.9	96.1	95.5	96.1	93.2	93.9

Table 6
Percentage of Households with a Telephone by Householder's Age

	RACE						HISPANIC ORIGIN	
	TOTAL		WHITE		BLACK		Unit	Avail
	Unit	Avail	Unit	Avail	Unit	Avail	Unit	Avail
NOVEMBER 1983								
TOTAL HOUSEHOLDS	91.4	93.7	93.1	95.0	78.8	83.9	80.7	84.6
16-24 YRS OLD	76.6	84.1	80.2	86.2	49.9	68.2	64.9	71.9
25-54 YRS OLD	91.5	93.7	93.4	95.2	78.7	83.3	81.8	85.6
55-59 YRS OLD	95.0	96.1	96.1	97.0	86.3	88.5	89.3	89.3
60-64 YRS OLD	95.5	96.4	96.4	97.2	89.5	90.7	87.3	90.2
65-69 YRS OLD	95.5	96.2	96.5	97.0	87.2	89.0	90.7	90.7
70-99 YRS OLD	95.4	96.5	96.0	97.0	90.1	92.3	85.5	89.1
1984 ANNUAL AVERAGE								
TOTAL HOUSEHOLDS	91.6	93.7	93.2	94.9	79.8	84.5	80.9	84.3
16-24 YRS OLD	77.0	83.6	79.6	85.4	58.2	70.8	60.9	69.2
25-54 YRS OLD	91.7	93.7	93.4	95.1	79.6	84.1	83.1	85.7
55-59 YRS OLD	94.9	96.1	96.1	97.1	86.6	89.2	87.1	90.1
60-64 YRS OLD	94.9	96.0	96.0	97.0	86.6	88.8	87.1	89.1
65-69 YRS OLD	96.2	96.8	97.1	97.6	87.9	89.9	90.2	91.5
70-99 YRS OLD	95.3	96.5	96.0	97.1	88.2	90.9	84.4	87.6
1985 ANNUAL AVERAGE								
TOTAL HOUSEHOLDS	91.8	93.9	93.3	95.0	81.1	85.2	81.3	84.4
16-24 YRS OLD	77.9	83.8	80.3	85.8	60.0	69.4	64.8	70.8
25-54 YRS OLD	91.9	93.9	93.5	95.2	80.7	85.0	82.5	85.2
55-59 YRS OLD	94.9	96.0	95.8	96.8	87.8	90.0	87.4	89.2
60-64 YRS OLD	94.9	95.9	95.8	96.5	88.4	90.2	89.7	91.3
65-69 YRS OLD	95.9	96.8	96.8	97.5	88.2	90.9	89.1	91.7
70-99 YRS OLD	95.5	96.6	96.2	97.3	89.1	90.7	87.6	90.9
1986 ANNUAL AVERAGE								
TOTAL HOUSEHOLDS	92.3	94.1	93.7	95.2	81.6	85.9	81.4	84.1
16-24 YRS OLD	79.0	84.4	81.5	85.9	59.8	72.2	63.4	67.4
25-54 YRS OLD	92.2	94.0	93.8	95.3	81.1	85.2	82.9	85.5
55-59 YRS OLD	95.2	96.3	96.1	97.0	88.0	91.3	87.6	90.4
60-64 YRS OLD	95.4	96.2	96.2	97.0	88.9	90.4	89.1	90.3
65-69 YRS OLD	95.8	96.7	96.7	97.4	88.4	90.6	90.4	91.9
70-99 YRS OLD	96.0	97.0	96.5	97.4	91.3	92.9	87.5	89.8
1987 ANNUAL AVERAGE								
TOTAL HOUSEHOLDS	92.4	94.2	93.8	95.4	81.8	85.9	83.0	85.4
16-24 YRS OLD	78.9	84.4	81.4	86.1	61.8	72.3	65.2	70.8
25-54 YRS OLD	92.3	94.2	93.9	95.4	81.4	85.5	84.4	86.5
55-59 YRS OLD	95.2	96.2	96.4	97.2	87.0	89.6	89.1	90.7
60-64 YRS OLD	95.7	96.4	96.6	97.3	88.0	90.2	90.9	92.0
65-69 YRS OLD	95.9	96.7	97.0	97.5	87.1	89.3	88.8	88.8
70-99 YRS OLD	96.0	97.0	96.5	97.5	91.9	93.0	91.6	93.1
1988 ANNUAL AVERAGE								
TOTAL HOUSEHOLDS	92.7	94.5	94.1	95.6	83.0	86.8	82.1	85.1
16-24 YRS OLD	80.2	85.1	82.3	86.8	65.6	73.5	64.0	70.9
25-54 YRS OLD	92.6	94.4	94.1	95.6	82.2	86.3	83.5	86.1
55-59 YRS OLD	95.1	96.4	96.1	97.2	88.3	91.0	88.5	89.9
60-64 YRS OLD	95.3	96.2	96.3	97.0	87.6	89.9	87.3	90.0
65-69 YRS OLD	96.4	97.1	97.2	97.7	89.6	92.0	89.6	91.2
70-99 YRS OLD	96.2	97.5	96.7	97.9	92.3	93.9	92.2	94.3

Table 6
Percentage of Households with a Telephone by Householder's Age

	RACE						HISPANIC ORIGIN	
	TOTAL		WHITE		BLACK		Unit	Avail
	Unit	Avail	Unit	Avail	Unit	Avail	Unit	Avail
1989 ANNUAL AVERAGE								
TOTAL HOUSEHOLDS	93.1	94.9	94.5	95.9	83.2	87.1	83.0	86.0
16-24 YRS OLD	80.5	85.9	82.9	87.7	65.3	75.2	64.8	72.3
25-54 YRS OLD	92.7	94.6	94.3	95.8	82.2	86.4	83.6	86.5
55-59 YRS OLD	95.4	96.5	96.4	97.4	88.7	90.7	90.1	91.2
60-64 YRS OLD	95.7	96.7	96.6	97.3	89.2	91.6	89.8	90.0
65-69 YRS OLD	96.3	97.0	97.1	97.7	90.3	91.9	88.8	91.0
70-99 YRS OLD	96.4	97.4	97.1	97.9	91.1	92.6	89.8	92.0
1990 ANNUAL AVERAGE								
TOTAL HOUSEHOLDS	93.3	95.0	94.6	96.1	83.5	87.0	82.7	85.3
16-24 YRS OLD	81.2	86.5	83.6	88.2	66.4	75.3	67.8	73.5
25-54 YRS OLD	92.6	94.5	94.1	95.7	82.4	86.1	82.0	84.6
55-59 YRS OLD	95.4	96.4	96.5	97.4	87.3	89.6	89.9	90.7
60-64 YRS OLD	96.2	96.9	97.1	97.6	89.7	91.6	90.6	91.1
65-69 YRS OLD	96.3	97.1	97.0	97.8	90.7	91.7	90.7	92.5
70-99 YRS OLD	96.9	97.8	97.4	98.3	91.9	93.3	93.2	94.1
1991 ANNUAL AVERAGE								
TOTAL HOUSEHOLDS	93.4	95.1	94.8	96.2	83.5	87.2	84.1	86.7
16-24 YRS OLD	81.0	86.1	83.4	88.0	65.7	74.5	68.5	73.9
25-54 YRS OLD	92.7	94.6	94.3	95.8	82.3	86.3	84.1	86.7
55-59 YRS OLD	95.5	96.7	96.5	97.5	88.0	90.9	89.8	90.5
60-64 YRS OLD	95.9	96.9	96.9	97.6	88.5	90.8	88.3	90.4
65-69 YRS OLD	96.7	97.5	97.5	98.2	89.8	91.8	92.9	94.0
70-99 YRS OLD	97.3	98.1	97.8	98.6	92.8	93.5	92.1	94.0
1992 ANNUAL AVERAGE								
TOTAL HOUSEHOLDS	93.8	95.3	95.2	96.4	84.2	87.9	85.8	88.2
15-24 YRS OLD	82.0	87.4	85.0	89.6	64.2	74.1	72.8	80.4
25-54 YRS OLD	93.1	94.8	94.6	95.9	82.9	87.0	85.5	87.7
55-59 YRS OLD	96.0	96.8	97.0	97.5	89.6	91.9	91.5	92.3
60-64 YRS OLD	96.3	97.1	97.0	97.7	91.2	92.6	89.3	91.2
65-69 YRS OLD	96.6	97.3	97.5	98.0	89.8	92.0	92.0	92.4
70-99 YRS OLD	97.5	98.0	98.0	98.5	93.1	94.0	94.2	95.0
1993 ANNUAL AVERAGE								
TOTAL HOUSEHOLDS	94.2	95.6	95.5	96.6	85.2	88.3	86.7	88.8
15-24 YRS OLD	83.3	87.3	85.7	89.2	70.1	77.3	71.8	76.3
25-54 YRS OLD	93.5	95.1	95.0	96.3	83.5	87.0	86.4	88.7
55-59 YRS OLD	95.9	96.8	96.7	97.5	90.0	92.2	91.3	92.1
60-64 YRS OLD	97.0	97.6	97.7	98.3	91.9	93.3	92.5	93.7
65-69 YRS OLD	97.0	97.6	97.5	98.1	92.8	93.5	92.9	93.9
70-99 YRS OLD	97.6	98.2	98.0	98.6	93.2	94.1	94.7	95.4
1994 ANNUAL AVERAGE								
TOTAL HOUSEHOLDS	93.8	95.4	95.1	96.4	85.7	89.4	86.0	88.3
15-24 YRS OLD	84.3	89.2	86.1	90.4	74.0	83.0	71.8	77.1
25-54 YRS OLD	93.3	95.0	94.7	96.0	84.8	88.7	86.1	88.4
55-59 YRS OLD	95.6	96.6	96.3	97.2	90.7	92.9	89.4	91.1
60-64 YRS OLD	96.3	97.2	97.1	97.9	90.1	91.9	91.8	92.4
65-69 YRS OLD	96.7	97.3	97.3	97.8	91.8	93.2	93.3	93.5
70-99 YRS OLD	96.7	97.6	97.2	98.1	91.7	93.1	92.3	93.7

Table 6
Percentage of Households with a Telephone by Householder's Age

	RACE						HISPANIC ORIGIN	
	TOTAL		WHITE		BLACK		Unit	Avail
	Unit	Avail	Unit	Avail	Unit	Avail	Unit	Avail
1995 ANNUAL AVERAGE								
TOTAL HOUSEHOLDS	93.9	95.2	95.2	96.2	86.2	89.2	85.9	87.8
15-24 YRS OLD	84.6	88.5	87.0	90.2	73.2	80.6	74.8	78.0
25-54 YRS OLD	93.6	94.9	95.0	96.0	85.4	88.5	86.1	88.0
55-59 YRS OLD	95.7	96.4	96.2	96.8	92.5	93.9	88.6	90.0
60-64 YRS OLD	95.8	96.5	96.3	96.9	91.7	93.4	90.0	90.9
65-69 YRS OLD	96.4	96.8	96.9	97.4	92.2	93.1	91.2	92.6
70-99 YRS OLD	96.4	97.1	97.0	97.5	91.4	92.8	90.4	92.1
1996 ANNUAL AVERAGE								
TOTAL HOUSEHOLDS	93.9	95.0	94.9	95.8	87.3	89.8	86.4	88.0
15-24 YRS OLD	84.9	88.4	86.8	89.6	74.5	81.2	72.9	76.4
25-54 YRS OLD	93.5	94.8	94.6	95.6	86.6	89.4	87.1	88.8
55-59 YRS OLD	95.7	96.3	96.3	96.8	91.0	92.5	90.3	90.7
60-64 YRS OLD	95.7	96.2	96.3	96.8	92.0	93.0	88.2	88.8
65-69 YRS OLD	95.8	96.3	96.4	96.8	92.5	93.3	89.5	90.4
70-99 YRS OLD	96.5	97.0	96.8	97.3	93.5	94.3	90.9	92.3
1997 ANNUAL AVERAGE								
TOTAL HOUSEHOLDS	93.9	95.0	95.0	95.9	86.9	89.5	86.7	88.6
15-24 YRS OLD	84.9	88.8	86.7	90.1	74.9	81.6	75.0	79.4
25-54 YRS OLD	93.6	94.8	94.7	95.7	86.3	89.0	87.1	88.9
55-59 YRS OLD	95.4	96.1	96.4	96.9	89.2	90.8	90.1	92.2
60-64 YRS OLD	96.0	96.5	96.6	97.0	92.1	92.7	90.6	91.2
65-69 YRS OLD	96.2	96.7	96.7	97.1	92.6	93.8	90.9	92.4
70-99 YRS OLD	96.2	96.7	96.6	97.1	93.0	93.7	90.3	91.3
1998 ANNUAL AVERAGE								
TOTAL HOUSEHOLDS	94.1	95.2	95.1	96.0	87.9	89.7	88.4	90.0
15-24 YRS OLD	87.0	89.8	88.4	91.0	79.9	83.8	80.0	83.5
25-54 YRS OLD	93.8	94.9	94.8	95.8	87.2	89.2	88.5	89.9
55-59 YRS OLD	95.6	96.2	96.2	96.8	91.5	92.5	91.4	92.8
60-64 YRS OLD	95.8	96.3	96.5	97.0	91.8	92.8	91.2	92.6
65-69 YRS OLD	95.7	96.3	96.5	97.0	90.2	90.7	95.1	95.8
70-99 YRS OLD	96.3	96.8	96.7	97.1	93.1	93.8	91.0	91.9
1999 ANNUAL AVERAGE								
TOTAL HOUSEHOLDS	94.2	95.0	95.2	95.9	87.7	89.6	89.9	90.9
15-24 YRS OLD	86.4	88.9	88.2	90.2	77.5	82.3	81.0	83.1
25-54 YRS OLD	94.0	94.9	95.1	95.9	87.5	89.5	90.2	91.3
55-59 YRS OLD	95.7	96.3	96.4	96.9	90.5	91.5	93.1	94.3
60-64 YRS OLD	95.7	96.2	96.4	96.8	90.9	92.0	92.2	92.8
65-69 YRS OLD	95.9	96.3	96.6	97.0	90.0	91.1	94.1	94.8
70-99 YRS OLD	95.8	96.3	96.2	96.7	92.2	92.8	92.4	93.1
2000 ANNUAL AVERAGE								
TOTAL HOUSEHOLDS	94.4	95.2	95.2	95.9	89.3	90.7	90.5	91.6
15-24 YRS OLD	87.8	90.1	89.0	91.3	81.2	84.1	81.9	84.4
25-54 YRS OLD	94.2	95.1	95.1	95.9	89.2	90.7	91.1	92.1
55-59 YRS OLD	95.8	96.3	96.2	96.7	91.8	92.5	91.1	92.0
60-64 YRS OLD	95.8	96.2	96.5	96.7	91.2	92.0	92.3	93.2
65-69 YRS OLD	95.8	96.1	96.3	96.5	92.8	93.2	94.5	94.7
70-99 YRS OLD	95.7	96.1	96.1	96.5	91.6	92.4	92.1	92.7

Table 6
Percentage of Households with a Telephone by Householder's Age

	RACE						HISPANIC ORIGIN	
	TOTAL		WHITE		BLACK		Unit	Avail
	Unit	Avail	Unit	Avail	Unit	Avail	Unit	Avail
2001 ANNUAL AVERAGE								
TOTAL HOUSEHOLDS	94.9	95.7	95.6	96.4	90.0	91.4	91.3	92.4
15-24 YRS OLD	88.8	91.0	89.4	91.5	85.6	88.1	83.5	85.6
25-54 YRS OLD	94.7	95.6	95.5	96.3	89.4	91.0	91.8	92.9
55-59 YRS OLD	96.4	96.9	96.8	97.2	93.1	94.3	93.3	94.3
60-64 YRS OLD	96.2	96.6	96.7	97.0	93.0	94.1	94.4	95.0
65-69 YRS OLD	96.4	96.8	97.1	97.4	92.0	92.7	94.1	94.3
70-99 YRS OLD	96.3	96.8	96.7	97.2	93.2	93.7	91.9	92.6
2002 ANNUAL AVERAGE								
TOTAL HOUSEHOLDS	95.3	96.2	96.2	96.9	90.1	91.6	91.7	92.9
15-24 YRS OLD	88.5	91.0	89.5	91.9	83.4	86.7	84.2	86.7
25-54 YRS OLD	95.0	95.9	95.9	96.7	89.6	91.1	92.0	93.2
55-59 YRS OLD	96.8	97.4	97.4	97.9	92.2	93.2	93.9	94.6
60-64 YRS OLD	96.9	97.4	97.2	97.7	94.8	95.4	93.0	93.5
65-69 YRS OLD	97.5	97.8	98.0	98.1	94.3	95.3	95.1	95.1
70-99 YRS OLD	97.2	97.6	97.7	98.0	93.7	94.4	94.9	95.3
2003 ANNUAL AVERAGE								
TOTAL HOUSEHOLDS	95.1	96.0	95.9	96.6	90.4	91.6	91.4	92.5
15-24 YRS OLD	87.9	90.4	88.9	91.0	83.6	87.0	85.0	87.3
25-54 YRS OLD	94.8	95.7	95.6	96.4	90.0	91.2	91.8	92.8
55-59 YRS OLD	96.8	97.3	97.3	97.8	93.8	94.3	92.6	93.8
60-64 YRS OLD	96.8	97.3	97.5	97.9	92.1	93.0	94.6	94.9
65-69 YRS OLD	97.0	97.4	97.6	97.9	93.2	93.3	94.3	94.6
70-99 YRS OLD	97.1	97.5	97.5	97.9	93.4	94.1	91.9	93.0
2004 ANNUAL AVERAGE								
TOTAL HOUSEHOLDS	93.8	94.8	94.6	95.5	88.6	90.0	90.3	91.6
15-24 YRS OLD	86.4	89.4	87.4	90.0	81.7	85.4	83.3	85.9
25-54 YRS OLD	93.5	94.6	94.4	95.4	88.3	89.8	90.8	92.0
55-59 YRS OLD	95.2	95.7	95.9	96.5	90.0	90.5	91.9	92.6
60-64 YRS OLD	95.3	95.7	96.0	96.4	89.3	89.7	93.0	93.8
65-69 YRS OLD	96.1	96.5	96.4	96.7	94.3	94.4	93.7	94.3
70-99 YRS OLD	95.9	96.3	96.3	96.7	91.8	92.7	91.8	92.2
2005 ANNUAL AVERAGE								
TOTAL HOUSEHOLDS	93.1	94.3	93.9	95.0	88.0	89.8	88.8	90.4
16-24 YRS OLD	86.4	89.0	87.6	89.9	80.9	85.0	80.8	82.7
25-54 YRS OLD	92.8	94.1	93.7	94.9	88.0	89.7	89.5	91.2
55-59 YRS OLD	94.4	95.2	95.0	95.7	89.8	91.2	89.4	90.9
60-64 YRS OLD	94.6	95.4	95.4	96.1	89.2	90.4	92.5	93.6
65-69 YRS OLD	95.1	95.9	95.9	96.5	90.6	91.5	90.9	91.5
70-99 YRS OLD	94.7	95.4	95.1	95.9	90.6	91.6	89.8	90.6
2006 ANNUAL AVERAGE								
TOTAL HOUSEHOLDS	93.6	94.7	94.4	95.4	88.7	90.3	89.1	90.7
16-24 YRS OLD	87.8	90.6	88.9	91.6	82.9	86.4	83.3	86.9
25-54 YRS OLD	93.3	94.5	94.1	95.2	88.4	90.1	89.4	90.8
55-59 YRS OLD	95.0	95.7	95.5	96.3	91.2	91.7	90.0	91.6
60-64 YRS OLD	95.5	96.3	96.1	96.9	91.7	92.8	92.0	92.8
65-69 YRS OLD	95.1	95.8	95.5	96.2	91.7	92.4	89.7	91.5
70-99 YRS OLD	95.0	95.6	95.6	96.2	90.5	91.2	91.3	92.3

Table 6
Percentage of Households with a Telephone by Householder's Age

	RACE						HISPANIC ORIGIN	
	TOTAL		WHITE		BLACK		Unit	Avail
	Unit	Avail	Unit	Avail	Unit	Avail	Unit	Avail
MARCH 2007								
TOTAL HOUSEHOLDS	94.6	95.3	95.4	96.0	89.2	90.6	91.0	92.3
15 - 24 YRS OLD	89.3	91.3	89.5	91.4	87.3	88.9	84.3	87.1
25 - 54 YRS OLD	94.2	95.1	95.1	95.8	88.9	90.5	91.1	92.3
55 - 59 YRS OLD	96.1	96.5	96.8	97.1	91.1	92.4	93.7	94.6
60 - 64 YRS OLD	96.3	96.7	97.2	97.6	89.1	89.4	94.5	95.5
65 - 69 YRS OLD	95.5	95.9	96.5	96.8	86.5	87.5	93.5	94.4
70 - 99 YRS OLD	95.9	96.3	96.3	96.7	92.4	92.8	92.2	93.4
JULY 2007								
TOTAL HOUSEHOLDS	95.0	95.8	95.7	96.5	90.5	91.7	91.0	92.5
15-24 YRS OLD	90.6	92.4	91.7	93.6	84.7	86.4	86.2	88.1
25-54 YRS OLD	94.5	95.4	95.2	96.1	90.2	91.5	91.0	92.5
55-59 YRS OLD	96.0	96.6	96.9	97.4	90.5	91.7	93.9	95.1
60-64 YRS OLD	96.8	97.3	97.3	97.7	93.4	94.5	92.9	94.1
65-69 YRS OLD	96.1	96.5	96.6	96.9	92.2	93.7	92.2	93.4
70-99 YRS OLD	96.6	97.2	97.1	97.7	93.8	94.1	92.8	93.7
NOVEMBER 2007								
TOTAL HOUSEHOLD	94.9	95.8	95.7	96.5	89.9	91.3	90.6	91.8
15 - 24 YRS OLD	89.5	91.3	90.1	91.6	85.5	89.2	83.1	84.8
25 - 54 YRS OLD	94.4	95.5	95.3	96.2	89.6	91.1	91.0	92.1
55 - 59 YRS OLD	96.0	96.7	96.9	97.4	90.8	92.1	90.5	92.2
60 - 64 YRS OLD	96.7	97.2	97.2	97.6	92.9	94.1	95.4	96.1
65 - 69 YRS OLD	96.5	96.8	97.4	97.5	90.5	90.9	94.0	94.0
70 - 99 YRS OLD	96.7	97.2	97.2	97.7	92.7	93.0	92.0	93.1
2007 ANNUAL AVERAGE								
TOTAL HOUSEHOLD	94.8	95.6	95.6	96.3	89.9	91.2	90.9	92.2
15 - 24 YRS OLD	89.8	91.6	90.4	92.2	85.8	88.2	84.5	86.7
25 - 54 YRS OLD	94.4	95.3	95.2	96.0	89.6	91.0	91.0	92.3
55 - 59 YRS OLD	96.0	96.6	96.8	97.3	90.8	92.1	92.7	94.0
60 - 64 YRS OLD	96.6	97.1	97.2	97.6	91.8	92.7	94.3	95.3
65 - 69 YRS OLD	96.1	96.4	96.8	97.1	89.7	90.7	93.2	93.9
70 - 99 YRS OLD	96.4	96.9	96.8	97.4	93.0	93.3	92.3	93.4
MARCH 2008								
TOTAL HOUSEHOLDS	95.2	95.9	95.8	96.4	91.3	92.3	91.6	92.5
15 - 24 YRS OLD	90.2	92.1	91.4	93.0	85.4	89.0	85.9	87.4
25 - 54 YRS OLD	94.9	95.5	95.4	96.0	91.2	92.1	91.5	92.5
55 - 59 YRS OLD	96.0	96.6	96.6	97.1	91.9	93.0	93.1	93.8
60 - 64 YRS OLD	96.7	97.2	97.0	97.6	93.7	94.4	93.9	94.7
65 - 69 YRS OLD	96.9	97.2	97.5	97.8	92.1	92.4	96.4	96.4
70 - 99 YRS OLD	96.7	97.1	97.1	97.4	94.1	94.1	94.6	94.9
JULY 2008								
TOTAL HOUSEHOLDS	95.4	96.1	96.1	96.7	91.0	92.0	92.0	93.1
15-24 YRS OLD	91.7	92.7	92.3	93.2	89.3	90.3	88.4	89.4
25-54 YRS OLD	95.0	95.8	95.6	96.4	90.8	92.0	92.0	93.3
55-59 YRS OLD	96.3	96.7	96.8	97.3	92.6	92.6	93.4	93.8
60-64 YRS OLD	96.4	96.9	97.0	97.6	91.4	92.0	94.0	95.5
65-69 YRS OLD	96.3	96.7	97.0	97.4	92.7	93.0	91.6	93.1
70-99 YRS OLD	96.8	97.2	97.5	97.8	91.5	92.0	93.6	94.0

Table 6
Percentage of Households with a Telephone by Householder's Age

	RACE						HISPANIC ORIGIN	
	TOTAL		WHITE		BLACK		Unit	Avail
	Unit	Avail	Unit	Avail	Unit	Avail	Unit	Avail
NOVEMBER 2008								
TOTAL HOUSEHOLDS	95.0	95.7	95.8	96.4	90.6	91.6	91.4	92.4
15 - 24 YRS OLD	90.7	92.6	91.7	93.7	84.3	86.3	88.0	90.4
25 - 54 YRS OLD	94.7	95.4	95.4	96.1	90.6	91.7	91.1	92.1
55 - 59 YRS OLD	95.8	96.2	96.5	96.9	90.2	90.8	93.7	94.3
60 - 64 YRS OLD	96.5	96.9	97.1	97.4	93.2	93.5	94.8	94.8
65 - 69 YRS OLD	96.2	96.6	96.9	97.3	93.1	93.1	91.8	92.2
70 - 99 YRS OLD	96.4	97.0	96.8	97.4	93.1	93.3	94.5	94.8
2008 ANNUAL AVERAGE								
TOTAL HOUSEHOLDS	95.2	95.9	95.9	96.5	91.0	91.9	91.7	92.7
15 - 24 YRS OLD	90.8	92.5	91.8	93.3	86.4	88.5	87.5	89.1
25 - 54 YRS OLD	94.8	95.6	95.5	96.2	90.9	91.9	91.5	92.6
55 - 59 YRS OLD	96.0	96.5	96.7	97.1	91.6	92.1	93.4	94.0
60 - 64 YRS OLD	96.5	97.0	97.1	97.5	92.8	93.3	94.2	95.0
65 - 69 YRS OLD	96.5	96.9	97.1	97.5	92.6	92.8	93.3	93.9
70 - 99 YRS OLD	96.6	97.1	97.1	97.5	92.9	93.2	94.2	94.6
MARCH 2009								
TOTAL HOUSEHOLDS	95.6	96.3	96.2	96.8	92.4	93.5	92.3	93.2
15 - 24 YRS OLD	91.5	93.0	92.1	93.4	87.9	89.8	86.6	88.3
25 - 54 YRS OLD	95.2	96.0	95.8	96.4	92.1	93.3	92.4	93.3
55 - 59 YRS OLD	96.5	97.0	97.2	97.5	91.6	92.9	95.2	95.2
60 - 64 YRS OLD	96.5	97.1	97.4	97.8	92.7	94.2	90.5	90.5
65 - 69 YRS OLD	97.5	97.9	97.9	98.2	95.2	95.9	94.9	95.7
70 - 99 YRS OLD	97.0	97.3	97.2	97.6	95.7	95.9	96.2	96.6
JULY 2009								
TOTAL HOUSEHOLDS	95.7	96.3	96.4	96.9	92.2	93.2	92.6	93.4
15-24 YRS OLD	91.5	92.9	92.1	93.2	89.3	91.3	85.5	87.0
25-54 YRS OLD	95.2	95.9	95.8	96.4	91.8	92.8	92.7	93.6
55-59 YRS OLD	96.4	97.0	97.1	97.5	93.2	94.6	95.8	95.8
60-64 YRS OLD	97.4	97.7	97.8	98.1	94.7	94.7	95.2	95.7
65-69 YRS OLD	97.3	97.5	97.7	98.0	93.7	93.7	95.3	95.3
70-99 YRS OLD	97.2	97.7	97.7	98.1	93.5	94.7	93.9	94.6

Table 7
Percentage of Adults with a Telephone by Labor Force Status

	RACE						HISPANIC ORIGIN	
	TOTAL		WHITE		BLACK		Unit	Avail
	Unit	Avail	Unit	Avail	Unit	Avail	Unit	Avail
NOVEMBER 1983								
TOTAL CNP	92.8	94.5	94.1	95.6	82.7	86.6	83.4	86.5
EMPLOYED	94.1	95.9	95.0	96.6	85.7	89.8	86.3	89.6
UNEMPLOYED	82.5	86.5	84.8	88.1	74.6	81.2	76.6	79.9
NOT IN LABOR FORCE	92.1	93.4	93.8	94.9	80.8	83.7	80.4	83.0
1984 ANNUAL AVERAGE								
TOTAL CNP	92.8	94.5	94.1	95.5	82.9	86.7	83.0	85.6
EMPLOYED	94.0	95.7	95.0	96.4	85.9	89.8	85.7	88.3
UNEMPLOYED	81.7	85.3	84.0	87.0	74.7	80.2	74.0	77.4
NOT IN LABOR FORCE	92.1	93.5	93.8	95.0	80.7	83.9	80.3	82.8
1985 ANNUAL AVERAGE								
TOTAL CNP	93.0	94.6	94.2	95.6	84.1	87.4	83.5	85.8
EMPLOYED	94.2	95.8	95.0	96.5	87.3	90.4	85.1	87.5
UNEMPLOYED	82.3	85.8	84.2	87.3	76.3	81.1	73.8	76.9
NOT IN LABOR FORCE	92.2	93.6	93.8	94.9	81.5	84.5	82.6	84.6
1986 ANNUAL AVERAGE								
TOTAL CNP	93.4	94.8	94.6	95.8	84.6	88.1	83.3	85.4
EMPLOYED	94.7	96.1	95.5	96.6	87.7	91.1	85.3	87.4
UNEMPLOYED	82.3	86.0	84.5	87.6	74.8	80.7	75.3	78.2
NOT IN LABOR FORCE	92.6	93.9	94.1	95.1	82.3	85.4	81.4	83.4
1987 ANNUAL AVERAGE								
TOTAL CNP	93.5	94.9	94.7	95.9	84.7	88.1	84.5	86.4
EMPLOYED	94.6	96.1	95.4	96.7	87.9	91.0	86.3	88.3
UNEMPLOYED	82.7	86.1	85.3	88.2	74.0	79.3	77.0	79.6
NOT IN LABOR FORCE	92.7	93.9	94.2	95.2	82.2	85.5	82.5	84.1
1988 ANNUAL AVERAGE								
TOTAL CNP	93.8	95.2	94.9	96.1	85.6	88.7	83.6	86.1
EMPLOYED	94.9	96.2	95.6	96.8	88.5	91.5	85.4	87.7
UNEMPLOYED	83.3	86.8	85.9	88.9	75.4	80.5	76.7	80.3
NOT IN LABOR FORCE	92.8	94.2	94.3	95.5	83.1	86.0	81.5	84.0
1989 ANNUAL AVERAGE								
TOTAL CNP	94.1	95.5	95.3	96.4	85.8	89.0	84.7	87.0
EMPLOYED	95.2	96.5	96.0	97.1	88.8	91.7	86.6	89.0
UNEMPLOYED	83.9	87.1	86.2	88.8	77.0	82.5	75.1	78.6
NOT IN LABOR FORCE	93.1	94.4	94.7	95.7	82.8	85.9	82.6	84.6
1990 ANNUAL AVERAGE								
TOTAL CNP	94.2	95.5	95.3	96.5	86.1	88.8	84.5	86.6
EMPLOYED	95.3	96.6	96.0	97.2	89.4	91.8	86.3	88.4
UNEMPLOYED	85.0	88.0	87.9	90.4	75.3	80.0	77.0	80.4
NOT IN LABOR FORCE	93.0	94.3	94.6	95.6	83.2	85.8	82.4	84.1

Table 7
Percentage of Adults with a Telephone by Labor Force Status

	RACE						HISPANIC ORIGIN	
	TOTAL		WHITE		BLACK		Unit	Avail
	Unit	Avail	Unit	Avail	Unit	Avail	Unit	Avail
1991 ANNUAL AVERAGE								
TOTAL CNP	94.3	95.7	95.5	96.6	86.3	89.1	85.5	87.7
EMPLOYED	95.6	96.8	96.3	97.3	89.8	92.4	87.5	89.6
UNEMPLOYED	86.4	89.5	88.3	91.0	78.9	84.1	78.2	81.6
NOT IN LABOR FORCE	93.1	94.4	94.7	95.8	82.6	85.3	83.5	85.4
1992 ANNUAL AVERAGE								
TOTAL CNP	94.7	95.9	95.8	96.8	86.9	89.8	87.8	89.7
EMPLOYED	95.8	97.0	96.5	97.5	90.1	92.8	89.5	91.6
UNEMPLOYED	88.1	90.3	90.0	91.8	81.2	85.0	83.4	85.8
NOT IN LABOR FORCE	93.6	94.8	95.2	96.1	83.6	86.5	85.8	87.4
1993 ANNUAL AVERAGE								
TOTAL CNP	95.0	96.1	96.0	97.0	87.5	90.0	88.2	89.9
EMPLOYED	96.1	97.1	96.8	97.6	90.6	92.8	89.7	91.5
UNEMPLOYED	88.6	90.6	90.7	92.3	80.9	84.7	85.0	87.1
NOT IN LABOR FORCE	93.8	94.9	95.3	96.2	84.5	87.0	86.1	87.6
1994 ANNUAL AVERAGE								
TOTAL CNP	94.5	95.9	95.6	96.7	87.9	91.0	87.3	89.2
EMPLOYED	95.6	96.8	96.3	97.3	90.4	93.2	88.5	90.4
UNEMPLOYED	87.8	90.8	89.8	92.2	81.1	86.7	84.1	86.5
NOT IN LABOR FORCE	93.4	94.8	94.8	95.9	85.4	88.5	85.7	87.6
1995 ANNUAL AVERAGE								
TOTAL CNP	95.0	96.1	95.9	96.8	89.1	91.4	88.0	89.6
EMPLOYED	95.8	96.7	96.5	97.2	91.2	93.2	88.9	90.4
UNEMPLOYED	88.8	91.7	90.8	93.1	82.3	87.4	84.4	87.2
NOT IN LABOR FORCE	93.4	94.4	94.8	95.7	84.9	87.3	86.0	87.7
1996 ANNUAL AVERAGE								
TOTAL CNP	94.9	95.8	95.6	96.4	89.7	91.8	88.4	89.7
EMPLOYED	95.6	96.4	96.2	96.9	91.4	93.0	89.6	90.8
UNEMPLOYED	88.8	91.1	90.1	91.9	85.0	89.5	84.6	86.5
NOT IN LABOR FORCE	93.4	94.4	94.5	95.3	86.4	88.8	85.6	87.0
1997 ANNUAL AVERAGE								
TOTAL CNP	94.9	95.8	95.7	96.5	89.3	91.5	88.6	90.2
EMPLOYED	95.6	96.5	96.2	96.9	91.1	92.9	89.5	91.1
UNEMPLOYED	87.8	90.4	89.7	91.4	81.5	87.1	82.4	84.3
NOT IN LABOR FORCE	93.5	94.4	94.8	95.5	86.4	88.4	86.9	88.4
1998 ANNUAL AVERAGE								
TOTAL CNP	95.1	95.9	95.7	96.5	90.4	91.9	89.9	91.3
EMPLOYED	95.6	96.4	96.1	96.8	91.9	93.3	90.4	91.8
UNEMPLOYED	89.3	91.4	91.5	93.2	82.9	85.6	85.4	88.6
NOT IN LABOR FORCE	93.9	94.7	94.9	95.6	87.8	89.1	89.0	90.2

Table 7
Percentage of Adults with a Telephone by Labor Force Status

	RACE						HISPANIC ORIGIN	
	TOTAL		WHITE		BLACK		Unit	Avail
	Unit	Avail	Unit	Avail	Unit	Avail	Unit	Avail
1999 ANNUAL AVERAGE								
TOTAL CNP	95.2	95.9	95.9	96.5	90.3	91.8	91.2	92.1
EMPLOYED	95.8	96.4	96.3	96.9	91.8	93.2	91.5	92.4
UNEMPLOYED	89.6	91.2	91.6	93.0	83.2	85.4	89.1	90.2
NOT IN LABOR FORCE	94.1	94.7	95.1	95.7	87.7	89.1	90.7	91.6
2000 ANNUAL AVERAGE								
TOTAL CNP	95.1	95.8	95.7	96.3	91.0	92.1	91.7	92.6
EMPLOYED	95.7	96.4	96.1	96.8	92.6	93.6	91.9	92.8
UNEMPLOYED	90.5	92.2	92.2	93.5	85.6	88.3	89.3	90.8
NOT IN LABOR FORCE	94.3	94.9	95.1	95.6	89.1	90.0	91.6	92.4
2001 ANNUAL AVERAGE								
TOTAL CNP	95.6	96.2	96.2	96.8	91.6	92.7	92.4	93.3
EMPLOYED	96.1	96.8	96.5	97.2	93.1	94.0	92.5	93.3
UNEMPLOYED	92.1	93.4	93.1	94.2	88.5	90.9	91.8	92.5
NOT IN LABOR FORCE	94.9	95.5	95.7	96.3	89.4	90.6	92.3	93.2
2002 ANNUAL AVERAGE								
TOTAL CNP	96.0	96.8	96.7	97.3	92.0	93.2	92.9	93.8
EMPLOYED	96.7	97.3	97.1	97.7	93.8	94.8	93.2	94.1
UNEMPLOYED	92.1	93.5	93.0	94.3	88.3	90.5	89.8	91.0
NOT IN LABOR FORCE	95.4	96.1	96.3	96.9	89.7	91.0	92.8	93.6
2003 ANNUAL AVERAGE								
TOTAL CNP	95.9	96.6	96.5	97.1	92.1	93.1	92.6	93.5
EMPLOYED	96.4	97.1	96.8	97.5	93.6	94.5	93.3	94.1
UNEMPLOYED	92.7	94.0	93.6	94.7	88.8	90.6	89.4	91.0
NOT IN LABOR FORCE	95.4	95.9	96.2	96.7	90.4	91.4	92.0	92.9
2004 ANNUAL AVERAGE								
TOTAL CNP	94.7	95.5	95.3	96.1	90.6	91.8	91.8	92.8
EMPLOYED	95.2	96.1	95.7	96.5	92.1	93.3	92.2	93.2
UNEMPLOYED	91.5	93.1	93.3	94.5	86.0	88.5	90.9	92.3
NOT IN LABOR FORCE	94.1	94.7	94.8	95.4	89.0	90.0	91.2	91.9
2005 ANNUAL AVERAGE								
TOTAL CNP	93.8	94.9	94.5	95.5	89.8	91.3	90.0	91.5
EMPLOYED	94.4	95.5	94.9	95.9	91.0	92.5	90.1	91.5
UNEMPLOYED	90.9	92.5	92.5	93.9	86.5	88.6	88.8	90.3
NOT IN LABOR FORCE	93.2	94.1	93.9	94.8	88.4	89.7	90.1	91.4
2006 ANNUAL AVERAGE								
TOTAL CNP	94.4	95.3	95.0	95.9	90.5	91.7	90.3	91.7
EMPLOYED	95.0	95.9	95.3	96.3	92.1	93.4	90.6	92.0
UNEMPLOYED	91.0	92.7	92.6	94.0	86.3	88.5	88.5	90.1
NOT IN LABOR FORCE	93.6	94.4	94.5	95.2	88.4	89.5	90.0	91.1

Table 7
Percentage of Adults with a Telephone by Labor Force Status

	RACE						HISPANIC ORIGIN	
	TOTAL		WHITE		BLACK		Unit	Avail
	Unit	Avail	Unit	Avail	Unit	Avail	Unit	Avail
MARCH 2007								
TOTAL CNP	95.3	96.0	95.9	96.5	90.8	92.0	92.0	93.2
EMPLOYED	95.9	96.6	96.3	97.0	92.6	93.7	92.2	93.4
UNEMPLOYED	92.0	93.2	93.6	94.5	85.6	87.9	89.5	90.7
NOT IN LABOR FORCE	94.4	95.1	95.3	95.9	88.8	90.0	91.8	92.9
JULY 2007								
TOTAL CNP	95.7	96.4	96.2	96.9	91.9	92.9	92.3	93.5
EMPLOYED	96.1	96.8	96.5	97.1	93.5	94.3	92.2	93.5
UNEMPLOYED	92.8	94.0	93.6	94.6	89.5	91.5	90.3	91.6
NOT IN LABOR FORCE	95.1	95.8	96.0	96.6	89.7	90.7	92.9	93.9
NOVEMBER 2007								
TOTAL CNP	95.6	96.4	96.2	96.9	91.6	92.8	92.1	93.0
EMPLOYED	96.1	96.9	96.5	97.2	92.9	94.3	92.1	93.1
UNEMPLOYED	93.2	94.4	93.9	94.9	90.2	91.3	90.8	92.1
NOT IN LABOR FORCE	95.1	95.7	96.0	96.5	89.8	90.8	92.2	93.0
2007 ANNUAL AVERAGE								
TOTAL CNP	95.5	96.2	96.1	96.8	91.5	92.6	92.1	93.2
EMPLOYED	96.0	96.7	96.4	97.1	93.0	94.1	92.2	93.3
UNEMPLOYED	92.7	93.9	93.7	94.7	88.4	90.2	90.2	91.5
NOT IN LABOR FORCE	94.9	95.5	95.8	96.3	89.5	90.5	92.3	93.3
MARCH 2008								
TOTAL CNP	95.9	96.4	96.4	96.9	92.3	93.1	92.8	93.6
EMPLOYED	96.5	97.1	96.8	97.4	93.7	94.6	93.1	93.9
UNEMPLOYED	93.2	94.0	93.7	94.5	90.1	90.9	89.8	91.6
NOT IN LABOR FORCE	95.1	95.6	95.8	96.3	90.4	91.1	92.6	93.2
JULY 2008								
TOTAL CNP	96.0	96.6	96.5	97.0	92.4	93.3	92.8	93.7
EMPLOYED	96.4	97.0	96.9	97.4	93.3	94.3	93.1	94.0
UNEMPLOYED	94.3	95.0	94.8	95.5	92.3	93.2	92.8	93.5
NOT IN LABOR FORCE	95.3	95.9	96.0	96.5	90.9	91.8	92.1	93.1
NOVEMBER 2008								
TOTAL CNP	95.7	96.3	96.3	96.9	92.0	92.9	92.6	93.6
EMPLOYED	96.3	96.9	96.7	97.3	93.6	94.4	93.5	94.3
UNEMPLOYED	93.7	94.5	95.3	95.9	88.2	89.9	90.9	91.5
NOT IN LABOR FORCE	94.8	95.4	95.6	96.2	90.4	91.2	91.4	92.4
2008 ANNUAL AVERAGE								
TOTAL CNP	95.8	96.4	96.4	96.9	92.3	93.1	92.7	93.6
EMPLOYED	96.4	97.0	96.8	97.3	93.5	94.4	93.2	94.1
UNEMPLOYED	93.7	94.5	94.6	95.3	90.2	91.3	91.2	92.2
NOT IN LABOR FORCE	95.1	95.6	95.8	96.3	90.6	91.4	92.0	92.9

Table 7
Percentage of Adults with a Telephone by Labor Force Status

	RACE						HISPANIC ORIGIN	
	TOTAL		WHITE		BLACK		Unit	Avail
	Unit	Avail	Unit	Avail	Unit	Avail	Unit	Avail
MARCH 2009								
TOTAL CNP	96.2	96.7	96.6	97.1	93.4	94.5	93.6	94.4
EMPLOYED	96.6	97.1	96.9	97.4	94.3	95.3	93.4	94.2
UNEMPLOYED	94.9	95.6	95.3	95.9	93.0	94.1	94.1	94.8
NOT IN LABOR FORCE	95.7	96.3	96.4	96.8	92.3	93.5	93.9	94.7
JULY 2009								
TOTAL CNP	96.2	96.7	96.7	97.1	93.4	94.3	93.6	94.3
EMPLOYED	96.7	97.2	97.0	97.4	94.4	95.3	93.5	94.2
UNEMPLOYED	94.6	95.5	95.5	96.1	91.9	93.6	93.7	94.5
NOT IN LABOR FORCE	95.7	96.2	96.3	96.8	92.2	93.1	93.7	94.5

Table 8
Critical Values for Determining Significant Differences by State

	In Unit	Available
UNITED STATES	0.7%	0.7%
ALABAMA	6.4%	7.7%
ALASKA	6.0%	7.5%
ARIZONA	6.7%	6.1%
ARKANSAS	5.5%	4.7%
CALIFORNIA	2.4%	2.4%
COLORADO	4.4%	5.0%
CONNECTICUT	4.2%	4.0%
DELAWARE	5.2%	5.7%
DISTRICT OF COLUMBIA	6.3%	6.3%
FLORIDA	2.8%	2.9%
GEORGIA	5.7%	5.0%
HAWAII	6.2%	6.2%
IDAHO	4.9%	4.6%
ILLINOIS	4.5%	5.1%
INDIANA	5.9%	5.9%
IOWA	4.3%	4.5%
KANSAS	4.9%	5.5%
KENTUCKY	5.5%	6.7%
LOUISIANA	8.5%	7.6%
MAINE	4.4%	4.4%
MARYLAND	4.3%	4.7%
MASSACHUSETTS	5.1%	5.3%
MICHIGAN	4.1%	4.3%
MINNESOTA	4.4%	4.6%
MISSISSIPPI	6.2%	6.5%
MISSOURI	4.4%	4.6%
MONTANA	5.7%	5.9%
NEBRASKA	6.0%	7.2%
NEVADA	4.8%	5.3%
NEW HAMPSHIRE	4.1%	4.0%
NEW JERSEY	4.5%	4.7%
NEW MEXICO	8.5%	9.9%
NEW YORK	3.3%	3.6%
NORTH CAROLINA	4.6%	4.9%
NORTH DAKOTA	5.6%	5.1%
OHIO	3.9%	3.8%
OKLAHOMA	5.5%	5.3%
OREGON	5.1%	4.9%
PENNSYLVANIA	3.4%	3.6%
RHODE ISLAND	5.0%	4.9%
SOUTH CAROLINA	5.1%	6.1%
SOUTH DAKOTA	4.9%	4.9%
TENNESSEE	6.3%	5.4%
TEXAS	3.1%	3.3%
UTAH	5.4%	5.7%
VERMONT	4.8%	5.0%
VIRGINIA	4.4%	4.4%
WASHINGTON	5.6%	7.9%
WEST VIRGINIA	4.9%	5.5%
WISCONSIN	4.7%	4.4%
WYOMING	4.6%	4.4%

Table 9
Critical Values for Determining Significant Differences by Income

	RACE						HISPANIC ORIGIN	
	TOTAL In Unit Available		WHITE In Unit Available		BLACK In Unit Available		In Unit Available	
TOTAL	0.7%	0.7%	0.8%	0.8%	2.2%	2.0%	2.3%	2.4%
UNDER \$5,000	8.8%	7.9%	10.5%	9.8%	14.9%	15.2%	21.9%	21.7%
\$5,000 - \$7,499	8.1%	7.0%	10.1%	9.0%	16.3%	16.2%	19.3%	17.7%
\$7,500 - \$9,999	8.8%	8.5%	10.2%	10.0%	18.5%	17.6%	23.0%	23.9%
\$10,000 - \$12,499	7.7%	7.8%	8.4%	8.6%	17.3%	16.0%	19.2%	21.3%
\$12,500 - \$14,999	7.7%	7.9%	8.9%	9.0%	19.3%	17.4%	18.0%	18.7%
\$15,000 - \$19,999	6.1%	5.9%	6.7%	6.5%	16.0%	14.1%	15.3%	14.6%
\$20,000 - \$24,999	5.9%	5.5%	6.4%	6.2%	15.2%	15.2%	15.1%	15.8%
\$25,000 - \$29,999	6.0%	6.3%	6.5%	6.6%	17.3%	16.5%	13.8%	13.5%
\$30,000 - \$34,999	5.8%	5.6%	6.3%	6.4%	16.5%	16.7%	14.5%	13.7%
\$35,000 - \$39,999	5.9%	6.2%	6.4%	6.5%	18.0%	18.2%	16.5%	16.4%
\$40,000 - \$49,999	4.7%	4.6%	4.9%	4.7%	15.4%	14.6%	14.1%	13.2%
\$50,000 - \$59,999	5.2%	5.8%	5.6%	6.1%	17.2%	18.6%	17.5%	18.3%
\$60,000 - \$74,999	4.5%	4.7%	4.9%	5.1%	17.3%	17.2%	16.0%	16.3%
\$75,000 - \$99,999	4.5%	4.7%	4.7%	4.9%	18.2%	18.3%	18.2%	17.6%
\$100,000 - \$149,999	5.0%	5.0%	5.2%	5.1%	23.7%	27.5%	22.7%	21.9%
\$150,000 +	6.5%	6.6%	6.8%	7.1%	35.5%	34.7%	28.3%	31.3%

Table 10
Critical Values for Determining Significant Differences by Household Size

	RACE						HISPANIC ORIGIN	
	TOTAL In Unit Available		WHITE In Unit Available		BLACK In Unit Available		In Unit Available	
TOTAL	0.7%	0.7%	0.8%	0.8%	2.2%	2.0%	2.3%	2.4%
1 PERSON	2.6%	2.5%	3.0%	2.8%	7.0%	6.6%	9.4%	10.0%
2 - 3	1.4%	1.4%	1.5%	1.4%	4.8%	4.5%	5.3%	5.5%
4 - 5	2.4%	2.4%	2.6%	2.7%	8.2%	7.9%	5.6%	5.4%
6 +	6.7%	6.3%	7.8%	7.8%	18.9%	15.5%	12.7%	11.5%

Table 11
Critical Values for Determining Significant Differences by Householder's Age

	RACE						HISPANIC ORIGIN	
	TOTAL In Unit Available		WHITE In Unit Available		BLACK In Unit Available		In Unit Available	
TOTAL	0.7%	0.7%	0.8%	0.8%	2.2%	2.0%	2.3%	2.4%
15-24 YRS OLD	4.9%	5.1%	5.7%	5.8%	11.7%	11.6%	10.8%	10.2%
25-54 YRS OLD	1.0%	1.0%	1.1%	1.1%	3.0%	2.7%	3.1%	2.9%
55-59 YRS OLD	2.9%	2.8%	3.1%	3.2%	10.7%	11.4%	14.5%	14.8%
60-64 YRS OLD	3.3%	3.4%	3.4%	3.6%	13.8%	14.6%	15.8%	18.0%
65-69 YRS OLD	3.6%	3.6%	3.8%	4.0%	14.8%	16.1%	20.0%	21.7%
70-99 YRS OLD	2.0%	1.9%	2.0%	2.1%	8.7%	8.0%	12.4%	11.9%

Table 12
Critical Values for Determining Significant Differences by Labor Force Status

	RACE						HISPANIC ORIGIN	
	TOTAL In Unit Available		WHITE In Unit Available		BLACK In Unit Available		In Unit Available	
TOTAL CNP	0.4%	0.4%	0.4%	0.4%	1.3%	1.2%	1.6%	1.3%
EMPLOYED	0.8%	0.8%	0.8%	0.9%	2.8%	2.9%	3.2%	3.3%
UNEMPLOYED	5.2%	4.8%	6.2%	5.8%	12.0%	12.0%	20.3%	20.9%
NOT IN LABOR FORCE	1.3%	1.3%	1.4%	1.5%	4.0%	4.3%	5.1%	5.2%

Customer Response

Publication: Telephone Subscribership in the United States (Data through July 2009)

You can help us provide the best possible information to the public by completing this form and returning it to the Industry Analysis and Technology Division of the FCC's Wireline Competition Bureau.

1. Please check the category that best describes you:

- press
- current telecommunications carrier
- potential telecommunications carrier
- business customer evaluating vendors/service options
- consultant, law firm, lobbyist
- other business customer
- academic/student
- residential customer
- FCC employee
- other federal government employee
- state or local government employee
- Other (please specify)

2. Please rate the report:

	Excellent	Good	Satisfactory	Poor	No opinion
Data accuracy	()	()	()	()	()
Data presentation	()	()	()	()	()
Timeliness of data	()	()	()	()	()
Completeness of data	()	()	()	()	()
Text clarity	()	()	()	()	()
Completeness of text	()	()	()	()	()

3. Overall, how do you rate this report?

Excellent	Good	Satisfactory	Poor	No opinion
()	()	()	()	()

4. How can this report be improved?

5. May we contact you to discuss possible improvements?

Name:

Telephone #:

To discuss this report contact Alex Belinfante at 202-418-0944		
Fax this response to	or	Mail this response to
202-418-0520		FCC/WCB/IATD Washington, DC 20554