

7. Rates and Price Indices

This section contains information on telephone price indices and rate levels.¹ It describes and presents a series of price indices maintained by the Bureau of Labor Statistics (BLS). It also discusses rate levels and changes in average rate levels.

Telephone Service Price Indices

The BLS collects a variety of information on telephone service as part of three separate programs -- the Consumer Price Index (CPI), the Producer Price Index (PPI), and the Consumer Expenditure Survey. They can be found on the Internet at www.bls.gov/data. The monthly price indices represent prices sampled in the middle of the month.

A Consumer Price Index for telephone services was first published in 1935.² Since that time, telephone prices have tended to increase at a slower pace than most other prices. Table 7.1 shows long-run changes in the Consumer Price Indices for all items, all services, telephone services, each of the seven major categories that currently constitute the overall CPI, and several services that are often characterized as public utilities. The price of telephone service has increased less rapidly than the prices of most of these categories when viewed over a long period of time. Chart 7.1 shows the levels of the overall CPI and the CPI for telephone services over time.

The CPI index of telephone services is based on a "market basket" intended to represent the telephone-related expenditures of a typical urban household. It includes both local and long distance services. The annual rate of change during recent years is shown in Table 7.2 for the overall CPI (which measures the impact of inflation on consumers), and the CPI for telephone services. In addition, Table 7.2 shows the Gross Domestic Product chain-type price index (which reflects inflation throughout the economy) prepared by the Bureau of Economic Analysis. Chart 7.2 shows the changes in the overall CPI and the CPI for telephone services over time.

For 2008 the nation's overall level of prices (measured by the CPI for all items) rose by 0.1%. The CPI for telephone services rose by 2.9% during 2008. The CPI for telephone services is composed of three subindices. During 2008, the local service component (including subscriber line charges) rose by 3.0%; the price index for interstate toll calls rose by 9.1%, and the price index for intrastate toll calls increased by 9.5%. The levels of these subindices over time are shown in Chart 7.3.

-
- 1 For more detailed information, see Industry Analysis and Technology Division, Wireline Competition Bureau, Federal Communications Commission, *Reference Book of Rates, Price Indices, and Household Expenditures for Telephone Service* (August 2008). Much, but not all, of the material in this section is based on that report.
 - 2 BLS publishes two sets of Consumer Price Indices. The CPI-U, used herein, is based on expenditures of all urban consumers. The CPI-W series is based on expenditures of urban wage earners and clerical workers.

The Bureau of Labor Statistics publishes a number of price indices related to local telephone service, two of which are important to the monitoring program. The CPI index of local telephone charges is based on a broadly defined "market basket" of local services that includes monthly service charges, message unit charges, leased equipment, installation, service enhancements (such as tone dialing and call waiting), taxes, subscriber line charges, and all other consumer expenditures associated with local telephone services except long distance charges. In contrast, the PPI index of monthly residential rates is much more narrowly defined. It is based only on monthly service charges for residential service, optional tone dialing service, and subscriber line charges. It excludes taxes and all other telephone service charges. The annual rates of change for these two indices are presented in Table 7.3.

CPI data are available for intrastate toll and interstate toll services since December 1977. Table 7.3 also presents the annual changes in these series for recent years.

Price indices are less reliable when industries are changing rapidly. For example, in 1992, long distance carriers began to increase basic long distance rates while at the same time greatly expanding their range of discount offerings aimed at medium and heavy users of long distance service. The fixed market basket of toll calls measured for the CPI did not fully reflect these discounts. In 1998, the CPI for telephone services was altered to include cellular telephone services, making the new index not directly comparable to prior years. In 1995, BLS made major changes to the PPI telephone series, and there are no data after July 1995 comparable with prior data. At that time the BLS introduced revenue-weighted telephone price indices. The new indices categorize the telephone industry into much finer detail, though the new series are not comparable to the old in many categories. Monthly data for the new CPI telephone indices are shown in Table 7.4.

With the release of data for January 2004, the Producer Price Index program changed its basis for industry classification from the 1987 Standard Industrial Classification (SIC) system to the North American Industry Classification System (NAICS). Developed in cooperation with Canada and Mexico, NAICS represents a profound change for statistical programs focusing on emerging economic activities. The system was developed using a production-oriented conceptual framework, grouping establishments into industries based on the activity in which they are primarily engaged. While many NAICS industries directly compare with SIC industries, a number of SIC industries were split or combined to form a new NAICS industry. The PPI treats the SIC-to-NAICS comparison as continuous if 80 percent or more of the weight of the SIC-based index comprises at least 80 percent of the weight of the NAICS-based index. All index series that have passed this test are published under the NAICS structure using the index base date and price index history established by the SIC-based index. Documentation of the NAICS to SIC concordance for all subsectors, industry groups, and products may be found at <http://www.bls.gov/ppi/ppinaics.htm>.³

3 Several telecommunications PPIs published by the BLS under the SIC classification system are no longer published following the conversion to NAICS. These include "Other Local Service" (SIC pcu4813#114), "Other Local Service except Directory Assistance" (SIC pcu4813#11409), "LEC Intrastate Private Line Service" (SIC pcu4813#311), "Directory Advertising" (SIC pcu4813#91), and "Other Telephone Services" (SIC pcu4813#99). In addition, "Directory Assistance" (SIC pcu4813#11401) is now classified as "Other Local Service" (NAICS 517110114) and "Telephone Communications except Radiotelephone" is

The current PPI indices are shown in Table 7.5.

Information on Rate Levels

Because of the sorts of difficulties mentioned above related to constructing price indices, measures of average revenues are sometimes used as alternatives to price indices. Table 7.6 contains average revenue per minute for interstate calls. These estimates show that billed revenue per minute has declined over time for both international and domestic services.

The FCC survey of local rates reported in previous Monitoring Reports was not conducted in 2008. Therefore, the rates reported in Tables 7.6 and 7.7 of the 2008 Monitoring Report are the most recent ones available.

Subscriber Line and Access Charges

Long distance companies rely on the loops, switches, and transport facilities of local telephone companies for access to their customers. As a result, local telephone companies recover a portion of their costs from long distance companies accessing their networks. Both the manner in which these access charges have been assessed and the proportion of the costs they have recovered have varied considerably over time.

Prior to 1984, AT&T provided almost all interstate long distance service while its local telephone companies provided about three-quarters of the nation's local telephone service. Under the regulatory oversight of the FCC and state public utilities commissions, for many years AT&T set long distance charges above cost and shared part of its revenues with Bell System and independent local companies. This system reduced pressures on the local companies to raise monthly local rates, but the high long distance rates suppressed demand for long distance calls and induced large corporations to bypass the public switched network. Moreover, while such revenue sharing arrangements were sustainable in an industry where one firm monopolized both long distance and local service, they were not compatible with a competitive long distance industry.

In mid-1984, the FCC, in cooperation with a Federal-State Joint Board comprised of both federal and state regulators, introduced sweeping changes to the way that local companies charged for their services. The historic method of sharing revenues was replaced with a new system of access charges that provided a uniform method for local telephone companies to charge for the origination and termination of interstate traffic on their local networks. In particular, monthly subscriber line charges (SLCs) were introduced to recover a portion of the fixed costs of the local telephone companies' loops directly from end users on a per-line basis. Since local telephone companies were required to reduce their charges to long distance carriers -- dollar for dollar -- the introduction of SLCs permitted reductions in implicit subsidies from long distance service to local service. The rebalancing of prices between local service and interstate long distance calls during the 1980s had a fundamental impact on the telephone industry as the price of long distance service fell and the volume of long distance calling surged.

now referred to as "Wired Telecommunications Carriers".

In mid-1997, as part of its implementation of the 1996 Telecommunications Act, the FCC introduced further interstate access charge reform. Presubscribed interexchange carrier charges (PICCs) were created in order to allow local carriers to recover the remaining portion of their fixed loop costs from long distance carriers on a per-line, instead of a per-minute, basis. A further access charge reform was adopted on May 31, 2000, which eliminated the PICC and consolidated it with the SLC. This took effect on July 1, 2000.⁴

Average monthly SLCs and PICCs are shown in Table 7.7 and average per-minute rates charged to long distance carriers are shown in Table 7.8. Both tables report historical averages for all local exchange carriers (LECs) that file access tariffs subject to price-cap regulation and LECs in the National Exchange Carrier Association (NECA) pool. These LECs control over 98% of the telecommunications industry's access lines regulated under Title II of the Telecommunications Act of 1996.⁵ Current per-line charges and per-minute charges are reported for each of the carriers in Tables 7.9 and 7.10, respectively.

The averages in Table 7.8 clearly illustrate the effectiveness of access reform in reducing the prices long distance carriers pay per minute for access to the local telephone companies' networks. The reductions in per-minute access prices over time have been a major contributing factor to reductions in long distance prices.

4 *Access Charge Reform*, CC Docket No. 96-262, Sixth Report and Order, 15 Rcd. 12962 (*CALLS Order*).

5 Telecommunications Act of 1996, Pub. L. No. 104-104, 110 Stat. 56 (1996) (*1996 Act*). The 1996 Act amended the Communications Act of 1934. 47 U.S.C. §§ 151 *et seq.*

Table 7.1
Long-Term Changes for Various Price Indices
(Annual Rates of Change)

	1958 - 2008	1998 - 2008
CPI All Items	4.0 %	2.5 %
CPI All Services	5.0	3.3
CPI Telephone Services ¹	1.7	0.1
CPI Major Categories:		
- Food & Beverages	*	3.0
- Housing	*	3.0
- Apparel	1.9	-1.1
- Transportation	3.5	1.6
- Medical Care	5.9	4.1
- Recreation	*	1.2
- Other Goods & Services	*	3.4
CPI Public Transportation	4.9	2.3
CPI Utility (Piped) Gas Service	5.5	7.3
CPI Electricity	3.8	4.4
CPI Water & Sewerage Maintenance	5.6	4.5
CPI Postage	4.6	3.0

* Series not established until after 1958.

¹ The CPI telephone service index was revised in December of 1997.

Source: Bureau of Labor Statistics.

Chart 7.1
CPI All Items and CPI Telephone Services
Base Periods: 1982-84 = 100

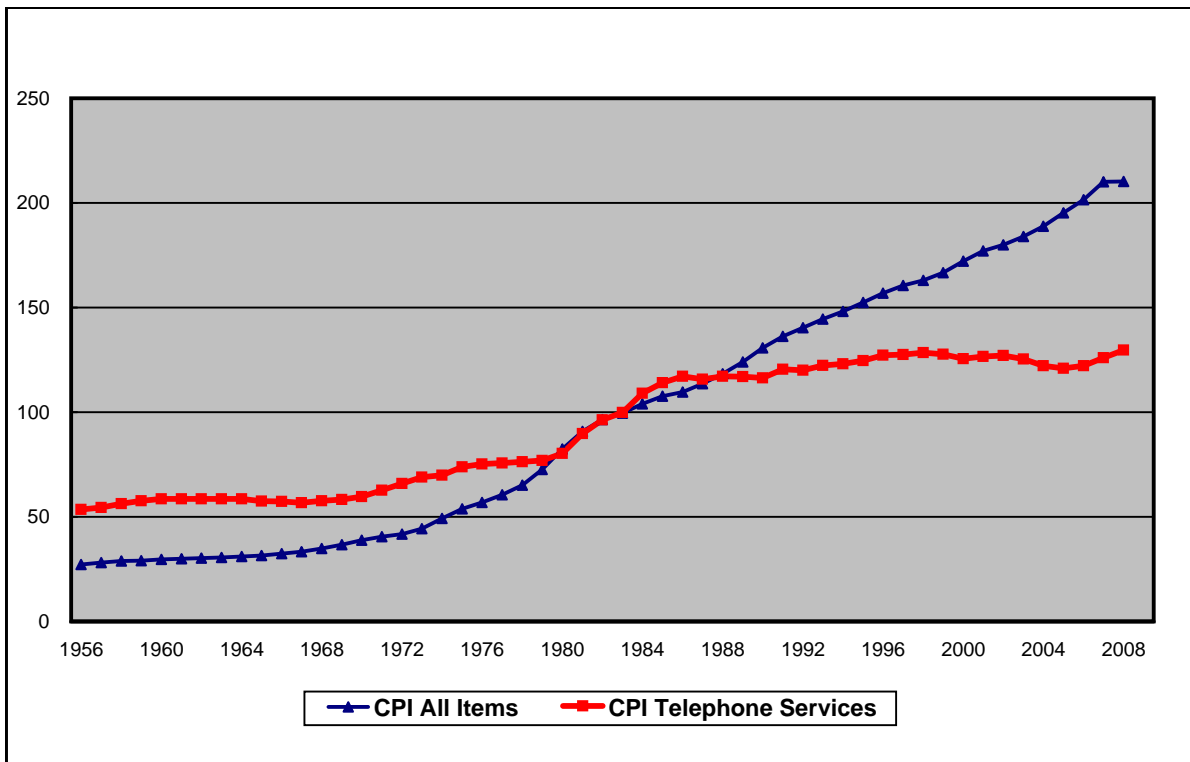


Table 7.2
Annual Changes in Major Price Indices

	GDP Chain-Type Price Index	CPI - All Items	CPI - Telephone Services
1980	9.7	12.5	4.6
1981	8.3	8.9	11.7
1982	5.2	3.8	7.2
1983	3.4	3.8	3.6
1984	3.6	3.9	9.2
1985	2.8	3.8	4.7
1986	2.3	1.1	2.7
1987	2.9	4.4	-1.3
1988	3.7	4.4	1.3
1989	3.5	4.6	-0.3
1990	4.1	6.1	-0.4
1991	3.1	3.1	3.5
1992	2.1	2.9	-0.3
1993	2.3	2.7	1.8
1994	2.2	2.7	0.7
1995	2.0	2.5	1.2
1996	1.9	3.3	2.1
1997	1.5	1.7	0.2
1998	1.1	1.6	0.3 *
1999	1.5	2.7	0.4
2000	2.3	3.4	-2.3
2001	2.5	1.6	1.3
2002	1.7	2.4	0.2
2003	2.2	1.9	-2.7
2004	3.2	3.3	-2.5
2005	3.5	3.4	0.4
2006	2.8	2.5	1.7
2007	2.6	4.1	2.1
2008	2.1	0.1	2.9

Note: All values calculated as the percent change from December of the previous year through December of the year shown, except the GDP price index, which is based on changes from the 4th quarter to 4th quarter.

* The CPI telephone service index was revised in December of 1997.

Sources: Bureau of Labor Statistics and Bureau of Economic Analysis.

Chart 7.2
CPI All Items and CPI Telephone Services

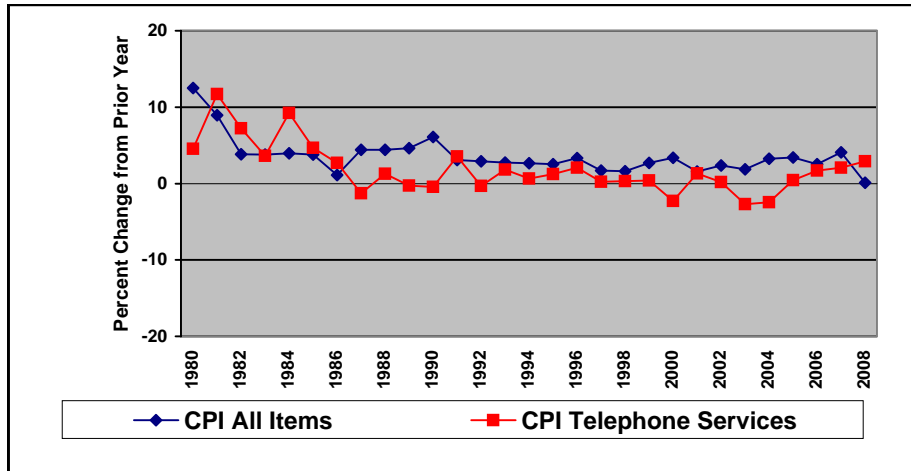


Table 7.3
Annual Changes in Price Indices for Local and Long Distance Telephone Services

	Local Residential Service		Toll Service *			
	CPI	PPI	Interstate		Intrastate	
			CPI	PPI	CPI	PPI
1980	7.0	7.1	3.4	5.5	-0.6	2.3
1981	12.6	15.6	14.6	15.9	6.2	8.0
1982	10.8	9.0	2.7	3.9	4.2	1.7
1983	3.1	0.2	1.4	0.0	7.4	3.9
1984	17.2	10.4	-4.3	-5.1	3.6	3.8
1985	8.9	12.4	-3.7	-3.0	0.6	2.1
1986	7.1	8.9	-9.4	-10.0	0.3	-3.5
1987	3.3	2.6	-12.4	-11.8	-3.0	-3.0
1988	4.5	4.6	-4.2	-2.1	-4.2	-3.8
1989	0.6	1.9	-1.3	-1.7	-2.6	0.5
1990	1.0	1.5	-3.7	-0.1	-2.2	-2.2
1991	5.1	2.1	1.3	-1.3	-1.5	-2.6
1992	0.5	-0.2	-1.3	1.0	-2.4	1.3
1993	1.0	0.8	6.5	3.8	0.2	-1.1
1994	-0.3	0.7	5.4	6.1	-1.0	-1.4
1995	2.6	**	0.1	**	-3.8	**
1996	0.9	0.2	3.7	0.8	6.1	0.9
1997	1.0	0.1	-4.3	7.8	2.8	-4.3
1998	1.3	0.0	-0.8	-0.4	1.5	-3.7
1999	2.8	0.2	-0.7	2.4	-1.6	-2.8
2000	5.5	1.5	-11.2	-4.3	-6.0	0.2
2001	4.5	2.7	-2.0	-9.4	-1.7	1.7
2002	5.3	1.6	-5.9	-18.5	-6.1	-0.3
2003	2.6	1.9	-10.9	-2.4	-9.4	-12.6
2004	1.1	0.7	-8.7	0.7	-6.6	-2.9
2005	3.3	0.9	-3.0	7.4	0.4	0.2
2006	2.2	2.7	5.0	20.6	3.3	1.2
2007	4.1	1.6	2.4	10.8	5.9	9.2
2008	3.0	0.5	9.1	15.3	9.5	4.2

Note: Data reflect the percent change from December of the previous year through December of the year shown.

* The CPI toll indices represent rates for households. Through 1994, PPI toll indices represent rate changes for both business and residential consumers. Since 1995, PPI indices reflect rates for residential customers.

** The PPI telephone indices were revised in June of 1995. The series are not comparable.

Source: Bureau of Labor Statistics.

Chart 7.3
CPI Telephone Service Price Indices
Base Periods: December 1997 = 100

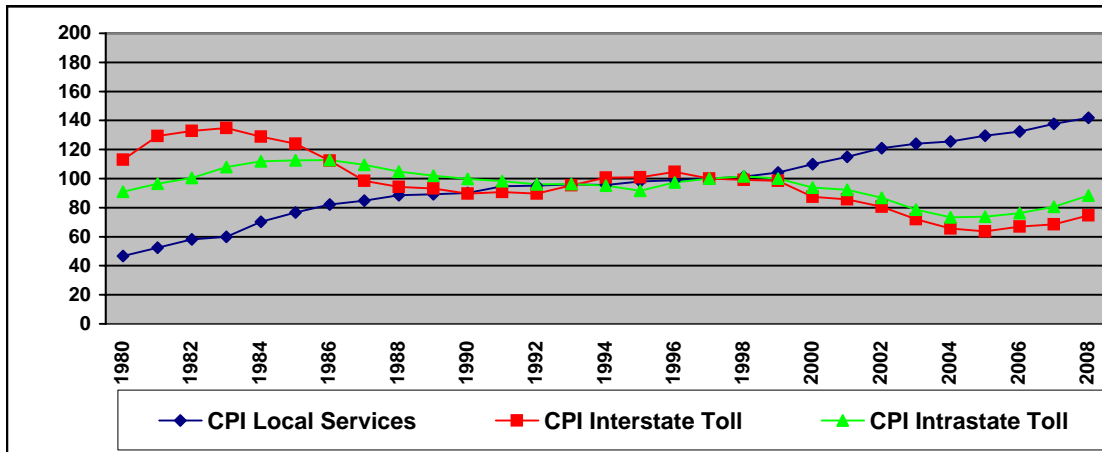


Table 7.4
Monthly Consumer Price Indices
(December 1997 = 100)

	All Goods and Services	Telephone Services	Land-line Telephone Services, Local Charges	Land-line Telephone Services, Long-Distance Charges	Land-line Interstate Toll Calls	Land-line Intrastate Toll Calls	Wireless Telephone Services	
BLS Series ID	CUUR0000SA0	CUUR0000SEED	CUUR0000SEED01	CUUR0000SEED02	CUUR0000SS27051	CUUR0000SS27061	CUUR0000SEED03	
2002	January	109.8	100.3	115.7	88.2	86.2	92.6	67.5
	February	110.2	100.3	116.1	87.9	85.8	92.6	67.5
	March	110.8	99.1	114.1	87.0	85.0	91.5	67.5
	April	111.5	98.2	114.0	85.1	82.7	90.1	67.6
	May	111.5	99.3	116.8	85.2	82.6	90.4	66.7
	June	111.5	99.2	116.9	85.0	82.5	90.1	66.6
	July	111.7	99.5	118.7	84.0	81.3	89.1	67.0
	August	112.0	100.6	120.2	84.7	82.6	89.1	67.8
	September	112.2	100.1	120.4	83.7	81.4	88.2	67.5
	October	112.4	99.9	120.6	83.0	80.7	87.5	67.9
	November	112.4	99.8	120.8	82.7	80.7	87.0	67.5
	December	112.2	99.9	121.0	82.6	80.7	86.7	67.4
2003	January	112.6	100.4	121.3	83.4	81.9	87.0	67.6
	February	113.5	100.5	121.2	83.5	82.2	86.9	67.7
	March	114.2	99.7	121.7	81.5	79.8	85.1	67.6
	April	113.9	98.7	121.9	79.2	77.4	83.1	67.5
	May	113.8	98.1	122.0	77.9	76.0	81.8	67.5
	June	113.9	97.5	122.2	76.7	74.6	80.8	66.3
	July	114.0	98.1	123.1	77.2	75.6	80.8	66.2
	August	114.4	97.8	123.7	76.0	74.0	79.7	66.1
	September	114.8	97.4	123.8	75.2	73.3	78.9	66.1
	October	114.7	97.1	124.0	74.3	72.1	78.7	66.1
	November	114.4	97.2	124.2	74.1	71.8	78.3	66.7
	December	114.3	97.2	124.1	74.3	72.0	78.6	66.5
2004	January	114.8	97.0	124.4	73.9	71.6	78.0	66.3
	February	115.4	97.1	124.2	73.9	71.6	77.8	66.6
	March	116.2	96.7	124.2	73.1	70.6	77.2	66.5
	April	116.6	96.5	123.9	72.8	70.1	77.2	66.4
	May	117.2	95.9	124.2	71.3	68.8	75.5	66.5
	June	117.6	95.8	124.2	71.2	68.4	75.4	66.4
	July	117.4	95.6	124.7	70.1	67.6	74.2	66.5
	August	117.5	95.0	124.7	68.7	66.0	72.9	66.5
	September	117.7	95.3	124.9	69.6	67.0	73.9	66.3
	October	118.4	94.6	125.2	68.3	65.7	72.6	65.5
	November	118.4	94.9	125.1	69.3	66.4	74.0	65.5
	December	118.0	94.8	125.5	68.6	65.7	73.4	65.6
2005	January	118.2	94.8	125.9	68.5	65.7	72.9	65.3
	February	118.9	95.1	126.9	68.5	65.3	73.8	65.4
	March	119.8	95.0	127.4	67.9	64.9	72.5	65.2
	April	120.6	95.3	127.8	68.4	64.9	73.4	65.2
	May	120.5	94.8	127.3	67.5	64.0	72.6	65.2
	June	120.6	94.6	127.5	67.1	63.7	72.1	65.2
	July	121.1	94.4	128.0	66.7	63.3	72.3	64.7
	August	121.8	94.1	128.6	65.5	62.0	71.2	64.7
	September	123.2	95.1	128.6	67.7	64.5	73.4	64.8
	October	123.5	94.6	128.8	66.5	63.2	72.1	64.8
	November	122.5	95.2	129.1	67.8	64.1	74.0	64.6
	December	122.0	95.2	129.5	67.4	63.7	73.7	64.6
2006	January	122.9	95.2	129.1	67.7	64.1	73.8	64.6
	February	123.2	95.2	129.2	67.7	64.2	73.8	64.6
	March	123.9	95.0	129.4	67.2	63.8	72.9	64.6
	April	124.9	95.4	129.5	68.4	64.9	74.4	64.3
	May	125.5	95.2	129.8	67.7	64.1	73.8	64.3
	June	125.8	95.4	130.0	67.9	64.5	73.9	64.4
	July	126.2	95.6	130.7	67.6	64.1	73.5	64.7
	August	126.4	95.9	131.2	68.2	64.8	73.9	64.6
	September	125.8	96.1	131.8	68.3	65.0	74.0	64.7
	October	125.1	96.8	131.9	69.8	67.0	75.5	64.6
	November	124.9	96.5	132.0	69.3	66.8	75.3	64.6
	December	125.1	96.8	132.4	69.6	66.9	76.1	64.6
2007	January	125.5	96.9	132.5	69.8	67.2	75.9	64.6
	February	126.2	97.1	133.3	69.9	67.2	75.9	64.6
	March	127.3	97.5	133.9	70.5	67.2	76.7	64.6
	April	128.1	97.6	134.6	70.3	67.5	76.6	64.6
	May	128.9	98.5	135.0	72.2	68.6	80.6	64.5
	June	129.2	98.5	135.3	72.2	68.5	80.8	64.4
	July	129.1	98.6	136.1	72.0	68.5	80.8	64.3
	August	128.9	98.8	136.6	72.2	68.7	81.1	64.4
	September	129.3	98.9	137.0	72.2	68.7	81.0	64.4
	October	129.5	99.0	137.6	72.1	68.7	80.9	64.4
	November	130.3	98.8	137.5	72.0	68.7	80.7	64.0
	December	130.2	98.8	137.8	71.9	68.5	80.6	64.0
2008	January	130.9	98.9	138.0	72.0	68.5	80.7	64.1
	February	131.2	98.8	137.9	71.8	68.5	80.3	64.1
	March	132.4	99.0	138.5	72.0	68.5	80.8	64.1
	April	133.2	99.5	139.6	72.2	68.7	81.1	64.3
	May	134.3	99.9	140.1	73.1	70.2	81.9	64.3
	June	135.7	100.7	140.5	75.5	72.0	85.7	64.3
	July	136.4	101.3	141.9	76.6	72.8	87.5	64.3
	August	135.8	101.3	141.5	76.8	72.9	88.0	64.3
	September	135.6	101.3	141.6	76.7	72.8	88.0	64.3
	October	134.3	101.4	141.7	76.9	73.2	88.2	64.3
	November	131.7	101.5	142.0	77.0	73.4	88.0	64.4
	December	130.3	101.7	142.0	77.5	74.7	88.3	64.4
2009	January	130.9	101.9	142.6	77.6	74.8	88.4	64.4
	February	131.6	101.9	142.7	77.6	74.8	88.3	64.4
	March	131.9	102.0	142.9	77.8	74.9	88.6	64.4
	April	132.2	102.1	143.2	77.7	75.0	88.8	64.4
	May	132.6	102.3	144.0	77.8	74.9	88.9	64.4
	June	133.7	102.2	143.8	77.6	74.7	88.9	64.4
	July	133.5	102.6	144.6	78.5	75.5	90.1	64.4

Note: Figures for All Goods and Services, Local Telephone Service, Interstate Toll Service, and Intrastate Toll Service after May, 2000 are converted from 1982-1984 base index series reported by the Bureau of Labor Statistics. Historical data on these series based upon the 1982-1984 index for January 1972 through March 2002 can be found in the Industry Analysis and Technology Division, Wireline Competition Bureau, *Monitoring Report* (October 2002).

Table 7.5
Monthly Producer Price Indices
(December 2003 = 100)

	Wired Telecommunications Carriers	Local Service, except Private Lines	Residence Local Service	Business Local Service	Coin Local Service	Other Local Service
NAICS Series ID	517110	5171101	51711011	51711012	51711013	51711014
2001 January	109.6	96.4	94.1	98.9	99.7	86.9
February	109.3	96.5	94.2	98.9	99.7	86.9
March	109.4	96.5	94.2	98.9	99.7	86.9
April	109.2	96.8	94.7	99.2	99.6	86.9
May	109.1	96.8	94.8	99.1	99.5	86.9
June	108.7	97.0	95.1	99.1	99.7	86.9
July	108.7	97.7	96.4	99.1	99.8	87.2
August	109.1	97.7	96.5	99.1	99.9	87.2
September	109.3	97.8	96.5	99.2	100.1	87.2
October	107.1	97.9	96.6	99.2	100.3	87.2
November	107.1	97.9	96.6	99.2	100.3	87.2
December	106.0	97.8	96.6	99.2	100.3	87.2
2002 January	105.1	98.2	97.2	99.4	100.3	87.2
February	104.6	98.2	97.2	99.4	100.3	87.2
March	104.4	98.3	97.2	99.4	100.4	87.2
April	103.9	98.3	97.3	99.4	100.4	87.2
May	104.4	98.3	97.3	99.4	100.4	87.2
June	104.2	98.4	97.4	99.5	100.4	87.2
July	103.8	98.8	98.0	99.6	100.4	99.3
August	104.3	98.8	98.0	99.6	100.4	99.3
September	104.2	98.8	98.1	99.5	100.0	99.7
October	101.6	98.8	98.1	99.5	100.0	99.7
November	102.7	98.8	98.1	99.5	100.0	99.7
December	102.2	98.8	98.1	99.5	100.0	99.7
2003 January	101.8	98.8	98.1	99.5	100.0	99.7
February	102.0	98.8	98.1	99.5	100.0	99.7
March	101.9	98.8	98.1	99.5	100.0	99.7
April	101.6	99.3	98.7	99.9	100.0	99.7
May	102.1	99.6	99.2	100.0	100.0	99.7
June	102.1	99.8	99.7	100.0	100.0	99.7
July	102.2	100.0	100.0	100.0	100.0	100.0
August	102.3	100.0	100.0	100.0	100.0	100.0
September	101.9	100.0	100.0	100.0	100.0	100.0
October	101.3	100.0	100.0	100.0	100.0	100.0
November	100.7	100.0	100.0	100.0	100.0	100.0
December	100.0	100.0	100.0	100.0	100.0	100.0
2004 January	100.4	100.2	100.3	100.0	100.0	100.0
February	99.8	100.2	100.3	100.0	100.0	100.0
March	100.0	100.2	100.3	100.0	100.0	100.0
April	99.8	100.2	100.3	100.0	100.0	100.0
May	99.5	100.2	100.3	100.0	100.0	100.0
June	99.6	100.2	100.3	100.0	100.0	100.0
July	99.4	100.2	100.3	100.0	100.0	100.0
August	99.5	100.2	100.3	100.0	100.0	100.0
September	99.2	100.2	100.4	100.1	100.0	100.2
October	99.0	100.3	100.5	100.1	100.0	100.6
November	98.9	100.4	100.6	100.1	100.0	100.6
December	98.6	100.4	100.7	100.1	100.0	100.6
2005 January	98.9	100.8	101.3	100.2	100.0	100.6
February	98.3	100.8	101.3	100.3	99.8	100.6
March	98.5	100.8	101.3	100.3	99.6	100.6
April	98.8	100.8	101.3	100.4	99.4	100.6
May	98.9	100.8	101.3	100.4	99.4	100.6
June	99.1	100.8	101.3	100.4	99.4	100.6
July	99.4	100.9	101.5	100.4	99.4	100.6
August	99.4	100.9	101.5	100.4	99.4	100.6
September	99.1	100.9	101.5	100.4	99.4	100.6
October	99.2	100.9	101.5	100.4	99.4	100.6
November	98.9	100.9	101.5	100.4	99.4	100.6
December	98.9	100.9	101.6	100.4	99.4	100.6
2006 January	98.6	101.1	101.9	100.5	99.4	100.6
February	98.5	101.3	102.3	100.5	99.4	100.6
March	99.0	101.4	102.4	100.5	99.4	100.6
April	98.8	101.4	102.4	100.6	99.4	102.1
May	99.1	101.9	103.3	100.6	99.4	102.1
June	99.5	102.0	103.3	100.8	99.4	102.1
July	99.9	102.0	103.4	100.8	99.4	102.1
August	100.3	102.2	103.7	100.8	99.4	102.1
September	100.7	102.2	103.7	100.8	99.4	102.1
October	101.4	102.2	103.7	100.8	99.4	102.1
November	100.8	102.6	104.2	101.1	99.4	102.1
December	101.6	102.7	104.3	101.3	99.4	102.1
2007 January	101.1	102.8	104.3	101.3	99.4	103.5
February	101.3	102.8	104.4	101.3	99.4	103.5
March	101.9	102.9	104.3	101.8	99.4	103.5
April	102.3	102.9	104.3	101.8	99.4	103.5
May	102.3	102.9	104.3	101.8	99.4	103.5
June	103.0	102.9	104.3	101.8	99.4	103.5
July	104.0	103.1	104.7	101.8	99.4	103.5
August	103.6	103.7	105.8	101.7	99.4	102.7
September	104.3	103.8	106.0	101.7	99.4	102.7
October	104.2	103.8	106.1	101.7	99.4	102.7
November	103.7	103.8	106.0	101.7	99.4	102.7
December	103.7	103.8	106.0	101.7	99.4	102.7
2008 January	103.5	104.2	106.6	101.7	99.4	102.7
February	104.2	104.2	106.6	101.7	99.4	102.7
March	104.2	104.2	106.7	101.7	99.4	102.7
April	104.0	104.2	106.7	101.7	99.4	102.7
May	104.6	104.2	106.7	101.7	99.4	102.7
June	104.5	104.2	106.7	101.7	99.4	102.7
July	104.7	104.0	106.4	101.7	99.4	102.7
August	104.9	104.0	106.4	101.7	99.4	102.7
September	105.0	104.1	106.5	101.7	99.4	102.7
October	105.1	104.1	106.6	101.7	99.4	102.7
November	105.1	104.2	106.7	101.7	99.4	102.7
December	105.1	104.1	106.5	101.7	99.4	102.7
2009 January	105.0	104.2	106.7	101.7	99.4	102.7
February	104.6	104.2	106.7	101.7	99.4	102.7
March	104.6	104.2	106.7	101.7	99.4	102.7
April	104.5	104.2	106.7	101.7	99.4	102.7
May	104.8	104.2	106.7	101.7	99.4	102.7
June	105.4	104.2	106.7	101.7	99.4	102.7
July	105.5	104.2	106.7	101.7	99.4	102.7

Note: The values for the last several months are subject to revision.

Table 7.5
Monthly Producer Price Indices - Continued
(December 2003 = 100)

	Public Switched Toll Service	Residence Switched Toll Service	Intrastate Residence Switched Toll Service	Interstate Residence Switched Toll Service	International Residence Switched Toll Service	Business Switched Toll Service	Business Switched Access Toll Service
NAICS Series ID	5171102	51711021	517110211	517110212	517110213	51711022	517110221
2001 January	127.0	123.5	111.5	135.3	194.8	132.6	135.5
February	126.4	123.4	112.5	133.5	197.8	131.2	136.0
March	126.6	123.8	113.2	134.0	195.9	131.0	135.4
April	125.8	123.4	112.7	133.5	196.2	129.5	135.0
May	125.4	123.6	112.6	134.5	193.0	128.2	132.8
June	124.3	122.5	113.7	131.8	183.6	127.1	131.0
July	123.6	122.3	114.2	130.6	185.1	125.6	130.4
August	124.5	124.4	114.4	137.7	175.1	124.7	128.7
September	124.8	122.9	114.6	134.4	169.2	127.9	130.5
October	119.5	118.5	113.3	125.4	158.8	121.0	124.5
November	119.4	119.3	114.1	128.8	146.0	119.7	120.1
December	116.8	118.2	114.7	125.7	142.2	114.7	115.4
2002 January	114.3	116.2	114.0	121.2	140.6	111.3	112.4
February	113.1	114.2	114.5	116.1	135.6	111.6	113.5
March	112.6	113.3	114.2	115.3	128.6	111.5	113.8
April	111.4	112.5	113.8	112.7	131.9	109.8	113.6
May	112.4	112.0	113.9	111.7	129.7	113.0	114.1
June	112.0	111.7	113.6	110.5	133.1	112.4	115.0
July	110.5	111.4	113.2	110.1	134.5	109.2	111.5
August	111.7	112.8	115.8	110.8	135.2	110.1	112.0
September	111.4	111.3	115.8	107.2	132.3	111.4	112.6
October	105.1	103.4	115.6	86.5	125.9	107.7	110.0
November	107.8	108.4	115.2	101.8	122.4	106.8	108.1
December	106.7	108.4	114.4	102.5	123.3	104.0	106.9
2003 January	105.7	107.1	114.2	99.2	122.3	103.5	105.9
February	106.1	106.9	104.5	110.4	118.9	105.0	106.7
March	105.9	107.0	104.4	111.0	118.2	104.2	105.1
April	104.7	104.8	103.8	106.3	113.8	104.6	106.3
May	105.4	106.6	104.1	111.7	109.9	103.5	103.9
June	105.1	105.7	104.1	109.7	108.1	104.2	105.7
July	105.3	106.5	103.8	110.6	116.2	103.6	103.7
August	105.5	106.6	103.6	111.8	113.1	103.9	103.9
September	104.5	104.7	102.7	108.5	108.4	104.2	104.7
October	103.1	104.0	102.0	108.1	104.0	101.8	103.0
November	101.7	102.0	101.2	104.0	101.6	101.2	100.5
December	100.0	100.0	100.0	100.0	100.0	100.0	100.0
2004 January	100.7	101.1	99.3	104.1	98.4	100.1	100.1
February	99.5	99.3	98.7	99.4	100.3	99.7	99.5
March	99.7	100.2	98.3	103.9	93.2	99.0	98.8
April	99.2	99.8	98.1	102.3	95.7	98.5	98.1
May	98.7	99.5	98.0	102.4	93.0	97.4	96.7
June	98.8	99.6	98.1	102.9	91.1	97.7	97.4
July	98.3	99.7	98.4	102.2	94.2	96.3	96.5
August	98.6	100.6	98.5	104.4	94.7	95.6	96.0
September	97.9	99.6	97.8	102.9	91.7	95.5	95.7
October	97.3	99.8	98.2	103.2	91.6	93.7	93.5
November	96.9	98.8	97.9	102.1	85.5	93.9	94.6
December	96.2	98.1	97.1	100.7	86.5	93.3	93.2
2005 January	96.5	98.8	97.4	101.7	89.6	93.1	92.8
February	94.9	96.8	96.1	97.7	89.2	92.0	91.7
March	95.5	98.7	96.8	101.8	90.5	90.8	91.3
April	96.1	98.9	97.0	101.6	93.4	91.9	91.8
May	96.3	100.1	97.0	105.6	90.9	90.5	89.8
June	96.8	100.6	97.8	105.8	92.3	91.1	90.7
July	97.4	102.2	98.2	108.5	98.1	90.2	89.9
August	97.3	102.3	98.0	109.1	98.0	89.9	89.7
September	96.8	100.9	97.9	105.3	97.9	90.6	89.7
October	96.8	101.5	98.1	107.4	94.9	89.9	89.3
November	96.2	101.0	97.5	107.2	93.1	88.9	90.3
December	96.1	101.5	97.3	108.2	95.4	87.9	88.8
2006 January	95.2	100.4	97.5	104.5	96.8	87.4	88.3
February	94.5	99.9	96.4	105.4	91.8	86.6	87.6
March	95.6	101.8	96.6	110.6	91.8	86.4	87.2
April	95.2	100.7	97.4	106.2	93.4	86.9	88.0
May	95.2	102.9	94.7	115.8	91.8	83.8	84.0
June	96.1	103.4	97.5	113.3	95.6	85.1	85.8
July	97.0	105.0	97.8	116.2	101.8	84.9	85.7
August	97.7	106.0	98.1	119.3	98.5	85.2	86.7
September	98.8	107.3	98.3	123.0	97.3	86.0	87.0
October	100.4	109.9	98.3	129.0	97.8	86.2	86.2
November	98.6	108.1	98.4	125.2	95.7	84.4	86.2
December	100.4	110.9	98.5	130.5	100.9	84.5	85.9
2007 January	98.3	106.1	97.7	118.0	113.9	85.4	86.6
February	99.0	108.6	100.2	119.6	120.5	84.1	85.4
March	100.7	111.3	100.6	124.3	120.6	85.0	84.7
April	102.1	115.1	102.3	128.8	126.3	83.8	84.2
May	102.2	115.4	103.7	129.3	124.7	83.7	83.5
June	104.3	119.2	104.8	134.7	128.2	84.0	84.3
July	107.5	125.6	105.9	144.3	133.6	83.8	85.6
August	105.1	122.4	106.8	137.7	134.6	82.3	83.9
September	107.2	126.1	106.9	144.2	135.1	82.8	81.9
October	106.9	127.0	108.4	146.6	131.2	81.1	80.7
November	105.2	124.7	106.6	145.2	124.4	79.9	79.2
December	105.2	124.0	107.6	144.6	120.9	80.6	78.1
2008 January	103.9	120.7	106.2	139.7	118.7	81.8	79.8
February	106.2	124.7	107.7	147.0	117.1	82.3	79.0
March	106.2	124.9	108.3	149.3	110.1	82.2	77.5
April	105.5	122.6	109.0	144.3	111.0	83.4	78.6
May	107.4	127.2	109.7	153.2	108.9	82.5	77.3
June	107.1	127.6	110.3	155.9	101.7	81.5	76.3
July	108.3	129.5	110.6	158.2	105.2	81.8	77.0
August	108.9	132.8	111.2	162.5	110.2	79.5	76.3
September	109.1	133.4	111.4	163.8	109.1	79.1	75.6
October	109.2	134.2	111.7	165.3	108.4	78.5	75.4
November	109.0	134.9	112.2	166.4	108.4	77.3	74.9
December	109.3	134.8	112.1	166.7	107.2	77.9	75.1
2009 January	108.6	133.6	111.9	164.1	108.4	77.8	75.5
February	107.2	131.8	111.8	160.9	108.4	76.9	74.9
March	107.5	133.0	111.9	162.0	111.7	76.1	74.3
April	106.9	132.5	112.0	160.9	112.1	75.4	73.5
May	108.3	135.5	112.4	166.3	111.9	75.2	73.5
June	109.9	138.3	113.1	171.3	111.7	75.6	73.8
July	110.2	139.0	113.4	172.2	112.4	75.4	73.1

Note: The values for the last several months are subject to revision.

Table 7.5
Monthly Producer Price Indices - Continued
(December 2003 = 100)

	Business Special Access Switched Toll Service, except Private Lines	Outbound Business Special Access Switched Toll Service	Intrastate Business Special Access Switched Toll Service, Outbound	Interstate Business Special Access Switched Toll Service, Outbound	International Business Special Access Switched Toll Service, Outbound	Inbound Business Special Access Switched Toll Service	Intrastate Business Special Access Switched Toll Service, Inbound
NAICS Series ID	517110222	5171102221	51711022211	51711022212	51711022213	5171102222	51711022221
2001 January	125.4	118.6	86.9	138.3	129.1	134.8	121.8
February	118.9	116.1	91.9	139.5	114.0	123.1	106.7
March	119.9	113.5	87.8	138.8	106.7	128.9	113.4
April	115.7	111.9	100.2	122.4	117.2	121.1	108.3
May	116.6	112.2	105.6	124.7	111.8	122.9	119.8
June	117.4	110.4	94.7	122.5	113.7	127.0	116.3
July	113.4	111.4	88.6	136.0	101.9	116.5	102.1
August	114.5	106.9	80.0	121.6	109.3	124.9	118.1
September	121.3	118.0	104.7	130.8	127.3	126.2	119.9
October	112.3	110.2	106.1	118.2	112.9	115.6	109.1
November	118.7	113.5	63.0	114.6	156.6	126.1	124.5
December	113.0	108.8	102.1	105.3	128.3	118.9	109.3
2002 January	108.9	99.9	100.7	90.1	115.4	121.7	128.6
February	107.2	106.1	103.0	103.2	119.4	108.9	93.6
March	106.2	105.4	111.3	99.6	117.5	107.3	98.5
April	101.3	99.6	114.7	87.7	109.7	103.7	92.9
May	110.6	106.7	106.6	106.3	115.0	116.1	116.7
June	106.6	105.0	104.5	103.6	113.1	108.9	106.2
July	103.9	103.1	106.0	97.4	114.1	105.1	99.3
August	106.0	103.9	93.2	103.3	115.8	108.9	104.9
September	108.7	108.4	111.3	106.8	118.5	109.2	103.4
October	102.5	99.8	97.7	94.9	109.1	106.2	96.7
November	103.9	102.7	101.9	100.4	110.1	105.6	94.8
December	97.6	96.0	92.0	85.5	111.0	100.0	95.4
2003 January	98.2	94.7	100.9	88.1	95.9	103.2	110.5
February	101.3	97.8	90.6	96.0	102.7	106.2	95.5
March	102.1	101.3	99.9	104.2	98.8	103.1	105.5
April	100.8	98.2	100.5	89.0	110.2	104.6	97.9
May	102.7	101.7	89.1	98.7	116.1	104.1	104.1
June	100.9	97.4	94.2	92.1	105.0	106.0	96.1
July	103.5	106.7	109.1	108.9	109.0	98.9	104.5
August	103.8	105.2	105.8	105.5	109.9	101.8	90.8
September	102.9	104.7	107.7	101.7	112.9	100.3	107.2
October	99.2	99.4	98.5	99.8	98.7	98.9	98.6
November	102.9	104.9	105.1	107.1	106.7	100.0	102.7
December	100.0	100.0	100.0	100.0	100.0	100.0	100.0
2004 January	100.3	99.2	101.1	98.7	98.1	101.8	101.1
February	100.1	100.5	91.0	111.5	88.8	99.5	96.0
March	99.5	96.6	90.6	104.1	84.0	103.7	102.5
April	99.3	97.7	98.1	104.4	83.9	101.6	95.7
May	99.0	97.5	93.1	104.3	86.2	101.2	99.0
June	98.4	96.7	93.5	103.0	84.4	100.8	103.3
July	95.7	95.0	91.8	97.3	87.7	96.7	97.8
August	94.7	93.4	94.1	92.7	86.7	96.7	99.1
September	95.2	93.3	96.0	94.1	83.1	97.9	106.0
October	94.1	93.8	93.8	93.2	87.8	94.6	98.3
November	92.5	91.7	87.9	91.8	84.7	93.6	92.3
December	93.6	91.9	90.1	91.8	84.0	96.0	96.6
2005 January	94.0	92.1	87.6	91.7	86.7	96.8	98.9
February	92.6	92.5	81.1	92.9	90.5	92.6	94.2
March	89.7	88.0	91.0	83.2	80.7	92.2	95.3
April	92.2	91.7	91.7	86.8	90.6	92.9	100.8
May	92.1	93.4	99.3	87.7	92.0	90.1	102.9
June	91.9	93.6	99.1	90.3	88.8	89.4	95.1
July	90.7	92.4	96.1	88.0	89.0	88.2	96.1
August	90.2	91.0	93.8	84.5	89.9	89.0	96.2
September	92.8	96.2	92.0	97.5	92.3	87.9	86.3
October	91.1	91.4	87.1	87.8	90.4	90.7	90.2
November	85.9	83.3	69.7	71.6	92.3	89.6	92.0
December	86.0	84.4	69.7	75.9	90.0	88.2	88.2
2006 January	85.3	84.1	74.1	76.5	84.7	87.1	87.7
February	84.2	83.4	68.0	73.3	90.9	85.4	83.2
March	84.5	84.7	73.6	78.3	85.0	84.2	82.4
April	84.5	85.5	68.1	84.1	82.0	83.0	75.6
May	83.4	80.8	69.3	70.9	82.6	87.2	90.3
June	83.6	83.4	64.7	76.9	87.1	83.8	75.8
July	83.1	82.7	68.1	74.1	86.3	83.8	80.8
August	81.9	81.2	66.0	72.6	83.5	82.9	82.1
September	83.6	83.5	67.2	72.5	93.2	83.6	82.6
October	86.3	82.6	68.9	72.0	90.2	91.4	85.6
November	80.3	79.3	69.3	70.3	82.6	81.9	82.8
December	81.4	80.6	65.0	71.7	87.1	82.5	80.9
2007 January	82.5	80.8	65.6	71.7	81.4	86.5	84.1
February	81.1	80.7	62.6	72.6	90.9	81.1	81.2
March	85.5	85.2	71.6	74.6	90.2	85.1	82.7
April	82.8	82.5	68.1	72.7	88.8	82.5	80.0
May	84.0	84.6	70.8	74.2	87.4	81.4	79.7
June	83.4	82.4	68.7	72.4	89.0	85.2	83.6
July	80.0	79.8	66.3	70.2	89.0	79.3	80.6
August	78.8	78.0	62.8	69.3	90.6	79.8	81.1
September	84.6	84.5	65.2	76.2	96.9	83.6	79.5
October	81.8	81.3	63.7	72.9	91.4	82.0	76.0
November	81.2	76.2	63.6	66.7	96.5	94.5	87.4
December	85.8	83.0	61.4	75.9	94.4	92.7	85.4
2008 January	86.1	83.6	62.8	76.1	93.4	92.2	76.9
February	89.0	85.7	63.3	78.4	95.4	97.2	82.7
March	92.1	89.9	63.0	83.5	96.8	97.4	83.3
April	93.5	91.9	62.5	86.0	98.0	96.8	83.3
May	93.5	91.3	65.3	84.3	98.9	98.4	83.6
June	92.3	90.4	64.5	83.5	99.2	96.7	82.5
July	91.9	91.6	64.6	84.9	100.9	91.5	82.1
August	86.0	84.3	63.9	76.3	101.6	90.0	81.1
September	86.5	85.2	63.5	77.6	101.5	88.9	80.5
October	84.9	83.4	63.3	75.5	102.7	88.0	80.2
November	82.2	79.0	62.6	70.4	101.3	90.5	79.3
December	83.7	81.3	62.1	73.5	98.7	89.6	78.7
2009 January	82.7	79.9	61.8	71.9	94.5	89.8	78.3
February	81.1	77.6	61.6	69.3	93.5	90.1	77.9
March	80.0	76.2	61.2	67.6	93.8	90.0	77.3
April	79.5	75.9	60.1	67.7	94.3	88.7	76.0
May	78.5	75.3	59.3	67.2	97.7	86.8	74.8
June	79.1	76.8	58.6	69.3	99.7	84.8	73.8
July	80.2	78.7	57.8	72.0	100.1	83.3	72.4

Note: The values for the last several months are subject to revision.

Table 7.5
Monthly Producer Price Indices - Continued
(December 2003 = 100)

	Interstate Business Special Access Switched Toll Service, Inbound	International Business Special Access Switched Toll Service, Inbound	Other Toll Service	Private Line Service	Intrastate Private Line Service	Other Telephone Services
NAICS Series ID	51711022222	51711022223	51711029	5171103	51711031	5171109
2001 January	174.2	161.1	124.8	99.1	97.5	99.6
February	152.4	155.7	126.2	99.1	97.5	99.6
March	163.4	161.8	123.8	99.1	97.5	99.6
April	147.0	173.0	124.5	99.1	97.5	99.6
May	147.3	172.5	124.3	99.0	97.2	99.6
June	158.0	178.3	124.1	99.1	97.4	99.6
July	138.5	177.2	123.0	99.1	97.4	99.5
August	152.6	169.3	122.8	99.1	97.4	99.5
September	154.9	167.8	123.9	99.3	98.0	99.6
October	134.0	164.0	123.3	99.3	98.1	99.6
November	153.2	154.4	123.0	99.3	98.1	99.8
December	141.9	134.7	124.6	99.3	98.1	99.8
2002 January	141.9	150.3	125.5	99.3	98.1	99.8
February	123.2	145.4	123.2	99.4	98.3	99.8
March	117.7	147.7	121.6	99.4	98.3	99.8
April	111.0	144.7	121.7	99.5	98.6	99.7
May	132.6	142.4	122.5	99.6	98.8	99.7
June	118.9	142.7	122.8	99.6	98.9	99.7
July	112.1	142.0	122.0	99.7	99.1	99.7
August	119.3	144.8	122.1	99.7	99.1	99.7
September	120.5	144.0	122.1	99.7	99.1	99.7
October	115.8	140.6	117.5	100.0	100.1	100.0
November	115.0	142.5	118.2	100.0	100.1	99.9
December	101.3	141.5	115.1	100.0	100.1	100.0
2003 January	103.8	141.4	112.3	100.0	100.1	100.1
February	116.1	142.3	113.3	100.0	100.1	100.0
March	105.6	116.6	111.0	100.0	100.1	100.0
April	111.5	117.4	110.8	100.0	100.1	100.0
May	108.3	113.3	106.9	100.0	100.1	100.0
June	115.6	106.1	106.6	100.0	100.1	100.0
July	95.8	108.0	105.0	100.0	100.0	100.0
August	107.4	104.5	106.3	100.0	100.0	99.8
September	98.2	107.6	104.2	100.0	100.0	99.8
October	97.8	112.2	103.1	100.0	100.0	100.0
November	99.1	100.3	101.4	100.0	100.0	99.9
December	100.0	100.0	100.0	100.0	100.0	100.0
2004 January	103.9	106.5	101.7	100.0	100.0	100.0
February	100.0	104.0	99.0	100.0	100.0	99.9
March	107.9	119.8	96.5	100.0	100.0	99.9
April	105.4	92.8	95.0	100.0	100.0	99.9
May	103.2	89.8	94.3	100.0	100.0	99.9
June	100.8	94.2	92.2	100.0	100.0	99.9
July	92.8	89.2	91.5	100.0	100.0	99.9
August	92.4	86.4	89.9	100.0	100.0	99.9
September	92.9	84.9	90.8	100.0	100.1	99.9
October	87.7	84.5	88.2	100.1	100.3	100.1
November	87.6	71.0	87.3	100.2	100.5	100.1
December	91.7	72.9	88.0	100.2	100.6	100.7
2005 January	92.8	70.4	85.5	100.3	100.9	100.6
February	84.7	44.9	86.3	100.3	101.0	100.7
March	83.2	72.1	83.5	100.4	101.2	100.6
April	83.0	67.7	83.5	100.5	101.3	100.6
May	75.6	67.8	81.2	100.5	101.3	100.6
June	76.4	68.6	82.5	100.5	101.3	100.6
July	73.4	64.3	81.5	100.5	101.3	100.6
August	75.2	66.1	80.3	100.5	101.3	100.6
September	75.9	73.7	80.9	100.5	101.3	101.0
October	81.4	67.1	78.9	100.5	101.3	101.2
November	78.0	76.2	78.5	100.5	101.3	101.8
December	76.1	65.2	78.3	100.5	101.3	101.2
2006 January	73.5	64.6	78.5	100.6	101.9	101.2
February	71.1	66.0	78.2	101.0	102.9	101.1
March	68.3	64.8	76.0	101.3	103.6	101.1
April	68.0	50.7	76.2	101.5	104.3	101.2
May	72.8	63.0	75.3	101.8	105.1	101.1
June	69.7	47.6	75.6	101.9	105.5	101.1
July	68.1	59.0	74.6	101.9	105.5	101.1
August	65.5	55.9	74.0	101.9	105.5	101.1
September	67.1	59.7	75.0	101.9	105.5	101.1
October	74.9	58.2	73.5	101.9	105.5	101.1
November	65.0	56.5	70.9	102.0	105.7	101.1
December	66.4	58.3	71.4	102.1	106.0	101.1
2007 January	69.9	58.8	71.7	102.2	106.3	101.1
February	64.5	60.9	71.5	102.2	106.6	101.5
March	68.8	58.4	70.8	102.2	106.9	103.5
April	66.7	57.7	70.5	102.2	107.0	102.3
May	65.4	58.7	70.5	102.2	107.0	102.2
June	68.4	60.0	70.2	102.2	107.0	102.2
July	62.4	60.5	69.9	102.2	107.0	101.9
August	63.0	59.9	69.6	102.2	107.0	101.8
September	68.3	58.6	69.4	102.2	107.1	101.8
October	67.7	57.5	68.7	102.3	107.2	101.8
November	78.5	55.0	68.8	102.3	107.2	101.8
December	77.0	56.5	69.0	102.3	107.2	101.8
2008 January	79.9	56.7	67.7	102.3	107.2	101.7
February	83.7	54.6	68.9	102.3	107.2	101.7
March	83.7	53.6	67.3	102.3	107.2	101.7
April	82.9	54.3	67.9	102.3	107.2	101.7
May	84.9	51.4	67.0	102.3	107.2	101.7
June	83.2	50.9	66.6	102.3	107.2	101.7
July	77.1	51.4	66.6	102.3	107.2	101.7
August	75.6	51.6	66.5	102.3	107.2	101.7
September	74.5	52.3	66.5	102.3	107.2	101.7
October	73.5	52.0	66.4	102.3	107.2	101.7
November	77.0	51.1	66.4	102.3	107.2	103.2
December	76.1	50.4	66.2	102.3	107.2	103.2
2009 January	76.5	49.6	65.8	102.3	107.2	103.2
February	77.1	49.2	65.8	102.3	107.2	103.2
March	77.2	48.4	65.4	102.3	107.2	103.2
April	76.2	47.9	65.2	102.3	107.2	103.2
May	74.4	47.1	65.1	102.3	107.2	100.1
June	72.3	47.4	64.9	102.3	107.2	103.2
July	71.0	48.0	64.9	102.3	107.2	103.2

Note: The values for the last several months are subject to revision.

**Table 7.6
Average Revenue per Minute**

	AT&T	All Carriers		
	All Interstate and International Switched Services	All Interstate and International Switched Services	International Switched Services	All Interstate Switched Services
1984	\$0.32	NA	NA	NA
1985	0.31	NA	NA	NA
1986	0.28	NA	NA	NA
1987	0.25	NA	NA	NA
1988	0.23	NA	NA	NA
1989	0.22	NA	NA	NA
1990	0.20	NA	NA	NA
1991	0.20	NA	NA	NA
1992	0.19	\$0.19	\$1.01	\$0.15
1993	0.19	0.19	1.02	0.15
1994	0.18	0.18	0.93	0.14
1995	NA	0.17	0.91	0.12
1996	NA	0.16	0.76	0.12
1997	NA	0.15	0.69	0.11
1998	NA	0.14	0.58	0.11
1999	NA	0.14	0.54	0.11
2000	NA	0.12	0.52	0.09
2001	NA	0.10	0.35	0.08
2002	NA	0.09	0.28	0.07
2003	NA	0.08	0.21	0.06
2004	NA	0.08	0.14	0.06
2005	NA	0.07	0.10	0.07
2006	NA	0.07	0.10	0.06
2007	NA	0.08	0.09	0.07

NA - Not available.

Note: Data for some prior years have been revised.

Sources: AT&T information provided by AT&T. Other estimates from Industry Analysis and Technology Division, Wireline Competition Bureau, *Telecommunications Industry Revenues* (September 2009).

**Table 7.7
Interstate Per-Line Access Charges**

Rates in Effect		Charged to End Users ² (Subscriber Line Charges)			Charged to Long Distance Carriers ³ (Presubscribed Interexchange Carrier Charges)			
From	To	Residential and Single-Line Business	Non-Primary Residential	Multiline Business and Centrex	Residential and Single-Line Business	Non-Primary Residential	Multiline Business	Centrex
05/26/84	05/31/85	\$0.00		\$4.99				
06/01/85	09/30/85	1.00		4.99				
10/01/85	05/31/86	1.00		4.97				
06/01/86	12/31/86	2.00		4.97				
01/01/87	06/30/87	2.00		5.12				
07/01/87	12/31/87	2.60		5.12				
01/01/88	11/30/88	2.60		5.01				
12/01/88	03/31/89	3.20		5.01				
04/01/89	12/31/89	3.50		4.94				
01/01/90	06/30/90	3.48		4.84				
07/01/90	12/31/90	3.48		4.83				
01/01/91	06/30/91	3.48		4.77				
07/01/91	11/27/91	3.49		4.74				
11/28/91	06/30/92	3.49		4.76				
07/01/92	06/30/93	3.49		4.68				
07/01/93	06/30/94	3.50		5.37				
07/01/94	06/30/95	3.50		5.45				
07/01/95	06/30/96	3.50		5.50				
07/01/96	06/30/97	3.50		5.53				
07/01/97	12/31/97	3.50		5.68				
01/01/98	06/30/98	3.50	\$4.98	6.92	\$0.49	\$1.50	\$2.52	\$0.35
07/01/98	12/31/98	3.50	4.99	7.11	0.49	1.38	2.38	0.38
01/01/99	06/30/99	3.50	5.88	7.05	0.49	1.38	2.22	0.32
07/01/99	12/31/99	3.50	5.84	6.94	0.95	1.77	2.78	0.42
01/01/00	06/30/00	3.50	5.81	6.94	0.92	1.70	2.44	0.35
08/11/00	06/30/01 ⁴	4.28	5.99	6.88	0.00	0.00	2.30	0.37
07/01/01	12/31/01	4.78	5.93	6.66	0.00	0.00	1.35	0.22
01/01/02	06/30/02	4.92	5.93	6.79	0.00	0.00	1.35	0.22
07/01/02	06/30/03	5.62	5.88	6.45	0.00	0.00	0.48	0.08
07/01/03	06/30/04	5.96	5.94	6.37	0.00	0.00	0.20	0.04
07/01/04	06/30/05	5.92	5.85	6.24	0.00	0.00	0.19	0.05
07/01/05	06/30/06	5.92	5.83	6.26	0.00	0.00	0.21	0.04
07/01/06	06/30/07	5.91	5.81	6.27	0.00	0.00	0.23	0.04
07/01/07	06/30/08	5.93	5.81	6.30	0.00	0.00	0.23	0.05
07/01/08	06/30/09	5.90	5.78	6.27	0.00	0.00	0.22	0.05
07/01/09	06/30/10	5.86	5.71	6.20	0.00	0.00	0.18	0.04

¹ This table shows average rates (weighted by access lines) for all local exchange carriers (LECs) that file access tariffs subject to price-cap regulation and all LECs in the National Exchange Carrier Association (NECA) pool.

² Prior to 1/01/1998, carriers did not charge separate subscriber line charge (SLC) rates for primary and non-primary residential lines. Therefore, the residential and single-line business average SLCs reported prior to 1/01/1998 include all residential SLC charges. The average residential and single-line business SLC rate as of 1/01/98 excludes non-primary residential SLCs. Non-primary SLCs are now reported separately, except for the LECs in the NECA pool, which continue to charge a single residential SLC. Under price-cap regulation, as of 7/1/2003, the caps on SLCs for primary residential and single-line business, non-primary residential, and multiline business and Centrex lines equal \$6.50, \$7.00, and \$9.20, respectively. For NECA pool companies, the residential SLC cap is \$6.50, while the multiline business and Centrex SLC cap equals \$9.20.

³ On 1/01/98, price-cap carriers began to charge presubscribed interexchange carrier charges (PICCs). The reported PICCs are averages per line including both price-cap and NECA pool lines. While carriers did not charge different rates for Centrex and multiline business SLCs, they did charge different PICC rates for these lines. Therefore, the average multiline business and Centrex PICC rates are reported separately. However, multiline business line counts, used to compute average PICC rates, include Centrex lines for LECs in the NECA pool, which do not charge PICCs or distinguish in access filings between the two line types. On 7/01/2000, residential and single-line business PICCs was eliminated. Since then the PICCs cap for multiline business lines equal \$4.31 for price cap carriers. Centrex groups of 9 or fewer lines are capped at the multiline business PICC rate of \$4.31 per group. Centrex groups with more than 9 lines are capped at \$0.48 per line (1/9th the multiline business rate).

⁴ Although the charges took effect on 7/1/2000, some companies made adjustments to the tariffs which did not take effect until 8/11/2000.

Source: Access tariff filings.

Table 7.8
Interstate Per-Minute Access Charges
(National Average in Cents per Minute)¹

Rates in Effect		Interstate Charges for Switched Access Service				
From	To	Carrier Common Line per Originating Access Minute ¹	Carrier Common Line per Terminating Access Minute ¹	Traffic Sensitive per Switched Minute	Non-Traffic Sensitive per Switched Minute ²	Total Charge per Conversation Minute ³
05/26/84	01/14/85	5.24 ¢	5.24 ¢	3.10 ¢		17.26 ¢
01/15/85	05/31/85	5.43	5.43	3.10		17.66
06/01/85	09/30/85	4.71	4.71	3.10		16.17
10/01/85	05/31/86	4.33	4.33	3.10		15.38
06/01/86	12/31/86	3.04	4.33	3.10		14.00
01/01/87	06/30/87	1.55	4.33	3.10		12.41
07/01/87	12/31/87	0.69	4.33	3.10		11.49
01/01/88	11/30/88	0.00	4.14	3.10		10.56
12/01/88	02/14/89	0.00	3.39	3.00		9.60
02/15/89	03/31/89	0.00	3.25	3.00		9.46
04/01/89	12/31/89	1.00	1.83	3.00		9.11
01/01/90	06/30/90	1.00	1.53	2.50		7.78
07/01/90	12/31/90	1.00	1.23	2.50		7.48
01/01/91	06/30/91	1.00	1.14	2.40		7.18
07/01/91	06/30/92	0.88	1.06	2.40		6.97
07/01/92	06/30/93	0.79	0.95	2.40		6.76
07/01/93	06/30/94	0.88	1.16	2.20		6.66
07/01/94	06/30/95	0.84	1.08	2.10	0.28 ¢	6.89
07/01/95	06/30/96	0.74	0.89	1.96	0.21	6.16
07/01/96	06/30/97	0.72	0.89	1.95	0.17	6.04
07/01/97	12/31/97	0.64	0.84	1.63	0.14	5.18
01/01/98	06/30/98	0.68	0.23	1.29	0.21	4.04
07/01/98	12/31/98	0.91	0.20	0.99	0.30	3.82
01/01/99	06/30/99	0.82	0.16	0.98	0.32	3.71
07/01/99	12/31/99	0.37	0.10	0.86	0.28	2.82
01/01/00	06/30/00	0.32	0.10	0.86	0.31	2.85
08/11/00	06/31/00 ⁴	0.23	0.07	0.52	0.26	1.91
07/01/01	12/31/01	0.15	0.07	0.48	0.24	1.71
01/01/02	06/30/02	0.15	0.07	0.47	0.24	1.69
07/01/02	06/30/03	0.02	0.01	0.48	0.22	1.46
07/01/03	06/30/04	0.00	0.00	0.48	0.22	1.44
07/01/04	06/30/05	0.00	0.00	0.50	0.25	1.53
07/01/05	06/30/06	0.00	0.00	0.52	0.25	1.59
07/01/06	06/30/07	0.01	0.00	0.54	0.25	1.63
07/01/07	06/30/08	0.01	0.00	0.56	0.26	1.71
07/01/08	06/30/09	0.01	0.00	0.63	0.24	1.77
07/01/09	06/30/10	0.00	0.00	0.64	0.26	1.85

¹ This table shows average rates (weighted by minutes of use) for all local exchange carriers (LECs) that file access tariffs subject to price-cap regulation and all LECs in the National Exchange Carrier Association (NECA) pool. The average rates reported here do not include revenues from subscriber line charges (SLCs) or primary interexchange carrier charges (PICCs), both of which are reported in Table 1.1. Effective 07/01/03, the carrier common line (CCL) rates for NECA carriers were eliminated.

² Non-traffic-sensitive charges include charges assessed on a per-month, per-unit basis. Prior to 07/01/94, these charges were included in the average traffic-sensitive rates.

³ The total charge per conversation minute consists of charges on the originating end of the call, which are adjusted for dialing and call setup time, plus charges on the terminating end. Originating charges per conversation minute equal the carrier common line charge per originating access minute plus the traffic-sensitive charge per switched minute, both multiplied by 1.07 to account for dialing and call setup time, plus the non-traffic-sensitive charge per switched minute. Terminating charges per conversation minute equal carrier common line charges per terminating access minute plus both traffic-sensitive and non-traffic-sensitive charges per switched minute.

⁴ Although the charges took effect on 7/1/2000, some companies made adjustments to the tariffs which did not take effect until 8/11/2000.

Source: Access tariff filings.

Table 7.9
Interstate Per-Line Access Charges by Carrier
(In Dollars per Month per Line)¹

Company	Rates Effective from 07/01/09 to 06/30/10					2008 Average Monthly Access Lines ³ (Thousands)		
	Subscriber Line Charges			PICC ²				
	Residential and Single-Line Business	Non-Primary Residential	Multiline Business and Centrex	Multiline Business	Centrex	Residential and Single-Line Business	Non-Primary Residential	Multiline Business and Centrex
ACS	\$6.50	NA	\$9.20	\$0.00	\$0.00	49	0	24
América Móvil	6.50	6.50	9.20	0.00	0.00	687	1	172
AT&T	5.48	5.26	5.40	0.00	0.00	34,451	4,099	18,699
CenturyTel	5.67	5.47	7.17	0.05	0.06	4,934	348	1,694
Cincinnati Bell	5.28	5.28	5.28	0.00	0.00	466	31	259
Consolidated	6.50	6.50	9.20	0.00	0.00	136	6	55
FairPoint	6.23	6.23	6.23	0.00	0.00	835	54	320
Frontier	6.17	6.53	9.20	3.87	0.74	1,288	58	436
Hawaiian Telecom	6.50	7.00	8.15	0.00	0.00	365	35	90
Iowa Telecom	5.89	5.89	8.09	0.00	0.00	155	5	43
Pacific Telecom Inc.	6.50	7.00	9.20	0.71	0.11	11	0	4
Qwest	5.99	6.20	6.38	0.00	0.00	6,619	636	2,731
Verizon	6.27	6.29	6.76	0.45	0.06	20,585	2,388	10,959
Windstream	6.29	6.46	7.50	0.12	1.32	1,523	224	534
Price Caps	5.82	5.71	6.09	0.19	0.04	72,104	7,887	36,020
NECA	6.50	NA	9.20	0.00	NA	4,788	NA	1,213
Price Caps and NECA	\$5.86	\$5.71	6.20	0.18	0.04	76,892	7,887	37,233

NA - Not Applicable.

¹ This table shows average rates (weighted by access lines) for all local exchange carriers (LECs) that file access tariffs subject to price-cap regulation and all LECs in the National Exchange Carrier Association (NECA) pool. Rates are composites of all regions and subsidiaries of each local exchange carrier. For example, non-primary residential SLCs can be less than primary residential SLCs due to weighting by access lines. Note that at the disaggregated level, non-primary rates are always greater than or equal to non-primary rates. The primary line rate is weighted by the number of primary residential lines and the non-primary residential rate is similarly weighted by the number of non-primary access lines. Because the weight on primary lines versus non-primary lines is not constant, the primary rate is not necessarily lower than the non-primary rate at the holding company level. No information is available for those carriers that are not in the NECA pool, but are subject to rate-of-return regulation.

² PICC is an abbreviation for Presubscribed Interexchange Carrier Charge.

³ Access line counts measure lines that companies report as qualified to receive subscriber line charges (SLCs). ISDN-BRI lines, which are charged non-primary SLC and PICC rates, are included in the non-primary residential line counts. ISDN-PRI lines, which are charged rates equal to five times the multiline business SLC and PICC rates, are multiplied by five and added to multiline business counts.

Source: Access tariff filings.

Table 7.9
Interstate Per-Line Access Charges by Carrier -- Continued
(In Dollars per Month per Line)¹

Company	Rates Effective from 07/01/08 to 06/30/09					2007 Average Monthly Access Lines ³ (Thousands)		
	Subscriber Line Charges			PICC ²				
	Residential and Single-Line Business	Non-Primary Residential	Multiline Business and Centrex	Multiline Business	Centrex	Residential and Single-Line Business	Non-Primary Residential	Multiline Business and Centrex
América Móvil	\$6.50	\$6.50	\$9.20	\$0.00	\$0.00	777	2	193
AT&T	5.48	5.30	5.45	0.00	0.00	34,451	4,099	18,699
CenturyTel ⁴	6.37	6.58	7.55	0.82	1.19	407	17	116
Cincinnati Bell	5.27	5.27	5.27	0.00	0.00	522	36	260
Consolidated	6.50	6.50	9.20	0.00	0.00	148	8	57
Embarq	5.66	5.55	6.95	0.00	0.00	4,349	375	1,502
FairPoint	6.25	6.25	6.25	0.00	0.00	930	72	333
Frontier	6.47	6.95	9.20	4.27	0.79	1,171	57	365
Hawaiian Telecom	6.50	7.00	8.15	0.00	0.00	405	39	94
Iowa Telecom	6.16	6.16	8.41	0.00	0.00	168	6	46
Pacific Telecom Inc.	6.50	7.00	9.20	1.33	0.20	15	1	3
Qwest	6.02	6.26	6.53	0.00	0.00	7,322	755	2,863
Verizon	6.29	6.31	6.80	0.55	0.07	22,306	2,804	11,703
Windstream	6.36	6.48	7.69	0.50	0.73	1,566	93	583
Price Caps	5.85	5.78	6.15	0.23	0.05	74,538	8,364	36,817
NECA	6.50	NA	9.14	0.00	NA	6,388	NA	1,621
Price Caps and NECA	\$5.90	\$5.78	6.27	0.22	0.05	80,926	8,364	38,437

NA - Not Applicable.

¹ This table shows average rates (weighted by access lines) for all local exchange carriers (LECs) that file access tariffs subject to price-cap regulation and all LECs in the National Exchange Carrier Association (NECA) pool. Rates are composites of all regions and subsidiaries of each local exchange carrier. For example, non-primary residential SLCs can be less than primary residential SLCs due to weighting by access lines. Note that at the disaggregated level, non-primary rates are always greater than or equal to non-primary rates. The primary line rate is weighted by the number of primary residential lines and the non-primary residential rate is similarly weighted by the number of non-primary access lines. Because the weight on primary lines versus non-primary lines is not constant, the primary rate is not necessarily lower than the non-primary rate at the holding company level. No information is available for those carriers that are not in the NECA pool, but are subject to rate-of-return regulation.

² PICC is an abbreviation for Presubscribed Interexchange Carrier Charge.

³ Access line counts measure lines that companies report as qualified to receive subscriber line charges (SLCs). ISDN-BRI lines, which are charged non-primary SLC and PICC rates, are included in the non-primary residential line counts. ISDN-PRI lines, which are charged rates equal to five times the multiline business SLC and PICC rates, are multiplied by five and added to multiline business counts.

⁴ Data reflect only those company study areas subject to price-cap regulation.

Source: Access tariff filings.

Table 7.10
Interstate Per-Minute Access Charges by Carrier
(In Cents per Minute) ¹

Company	Rates Effective from July 1, 2009 to June 30, 2010					Year 2008 Local Switching Minutes of Use (Millions)
	Carrier Common Line per Originating Access Minute	Carrier Common Line per Terminating Access Minute	Switched Traffic Sensitive per Access Minute	Switched Non-Traffic Sensitive per Access Minute ²	Total Charge per Conversation Minute ³	
ACS	0.00 ¢	0.00 ¢	0.56 ¢	0.12 ¢	1.39 ¢	236
América Móvil	0.00	0.00	0.90	0.22	2.29	2,029
AT&T	0.00	0.00	0.49	0.24	1.50	135,647
CenturyTel	0.01	0.00	0.85	0.21	2.18	20,102
Cincinnati Bell	0.00	0.00	0.66	0.55	2.47	2,170
Consolidated	0.00	0.00	1.33	0.35	3.46	456
FairPoint	0.00	0.00	0.51	0.28	1.62	3,421
Frontier	0.19	0.00	0.50	0.58	2.40	4,567
Hawaiian Telecom	0.00	0.00	0.63	0.38	2.06	996
Iowa Telecom	0.00	0.00	1.48	0.78	4.62	445
Pacific Telecom Inc.	0.00	0.00	0.49	0.17	1.35	48
Qwest	0.00	0.00	0.79	0.20	2.03	30,733
Verizon	0.00	0.00	0.55	0.26	1.64	86,668
Windstream	0.00	0.00	0.62	0.25	1.78	6,084
Price Caps	0.00	0.00	0.57	0.25	1.69	293,601
NECA	0.00	0.00	2.30	0.47	5.71	12,355
All Price Caps and NECA	0.00	0.00	0.64	0.26	1.85	305,956

¹ This table shows average rates (weighted by minutes of use) for all local exchange carriers (LECs) that file access tariffs subject to price-cap regulation and all LECs in the National Exchange Carrier Association (NECA) pool. Rates are composites of all regions and subsidiaries of each local exchange carrier. No information is available for those carriers that are not in the NECA pool, but are subject to rate-of-return regulation. The average rates reported here do not include the average revenue per minute from subscriber line charges (SLCs) or primary interexchange carrier charges (PICCs), both of which are reported in Table 1.1.

² Non-traffic sensitive charges include charges assessed on a per-month, per-unit basis.

³ The total charge per conversation minute consists of charges on the originating end of the call, which are adjusted for dialing and call setup time, plus charges on the terminating end. Originating charges per conversation minute equal the carrier common line charge per originating access minute plus the traffic-sensitive charge per switched minute, both multiplied by 1.07 to account for dialing and call setup time, plus the non-traffic-sensitive charge per switched minute. Terminating charges per conversation minute equal carrier common line charges per terminating access minute plus both traffic-sensitive and non-traffic-sensitive charges per switched minute.

Source: Access tariff filings.

Table 7.10
Interstate Per-Minute Access Charges by Carrier -- Continued
(In Cents per Minute) ¹

Company	Rates Effective from July 1, 2008 to June 30, 2009					Year 2007 Local Switching Minutes of Use (Millions)
	Carrier Common Line per Originating Access Minute	Carrier Common Line per Terminating Access Minute	Switched Traffic Sensitive per Access Minute	Switched Non-Traffic Sensitive per Access Minute ²	Total Charge per Conversation Minute ³	
América Móvil	0.00 ¢	0.00 ¢	0.97 ¢	0.28 ¢	2.56 ¢	2,210
AT&T	0.00	0.00	0.49	0.24	1.50	147,141
CenturyTel ⁴	0.10	0.00	0.49	0.28	1.69	1,638
Cincinnati Bell	0.00	0.00	0.63	0.46	2.24	2,553
Consolidated	0.00	0.00	1.29	0.40	3.47	470
Embarq	0.00	0.00	0.89	0.18	2.20	18,574
FairPoint	0.00	0.00	0.48	0.27	1.53	3,989
Frontier	0.28	0.01	0.49	0.53	2.39	4,212
Hawaiian Telecom	0.00	0.00	0.60	0.48	2.20	1,221
Iowa Telecom	0.00	0.00	1.63	0.82	5.00	485
Pacific Telecom Inc.	0.00	0.00	0.54	0.14	1.40	51
Qwest	0.00	0.00	0.77	0.18	1.95	33,755
Verizon	0.02	0.00	0.52	0.23	1.57	100,522
Windstream	0.00	0.00	0.56	0.25	1.66	6,101
Price Caps	0.01	0.00	0.56	0.23	1.64	322,923
NECA	0.00	0.00	2.06	0.39	5.04	15,125
All Price Caps and NECA	0.01	0.00	0.63	0.24	1.80	338,049

¹ This table shows average rates (weighted by minutes of use) for all local exchange carriers (LECs) that file access tariffs subject to price-cap regulation and all LECs in the National Exchange Carrier Association (NECA) pool. Rates are composites of all regions and subsidiaries of each local exchange carrier. No information is available for those carriers that are not in the NECA pool, but are subject to rate-of-return regulation. The average rates reported here do not include the average revenue per minute from subscriber line charges (SLCs) or primary interexchange carrier charges (PICCs), both of which are reported in Table 1.1.

² Non-traffic sensitive charges include charges assessed on a per-month, per-unit basis.

³ The total charge per conversation minute consists of charges on the originating end of the call, which are adjusted for dialing and call setup time, plus charges on the terminating end. Originating charges per conversation minute equal the carrier common line charge per originating access minute plus the traffic-sensitive charge per switched minute, both multiplied by 1.07 to account for dialing and call setup time, plus the non-traffic-sensitive charge per switched minute. Terminating charges per conversation minute equal carrier common line charges per terminating access minute plus both traffic-sensitive and non-traffic-sensitive charges per switched minute.

⁴ Data reflect only those company study areas subject to price-cap regulation.

Source: Access tariff filings.