



Communications Status Report for Areas Impacted by Hurricane Ida August 30, 2021

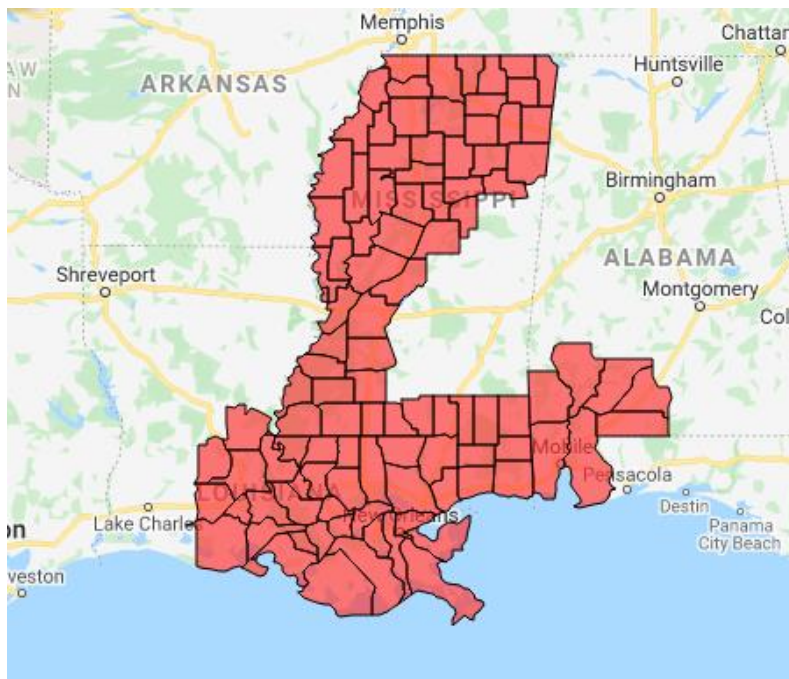
The following is a report on the status of communications services in geographic areas impacted by Hurricane Ida as of August 30, 2021 at 11:00 a.m. EDT. This report incorporates network outage data submitted by communications providers to the Federal Communications Commission’s (FCC) Disaster Information Reporting System (DIRS). Note that the operational status of communications services during a disaster may evolve rapidly, and this report represents a snapshot in time.

The following counties are in the current geographic area that is part of DIRS (the “disaster area”) for today’s report.

Alabama: Baldwin, Clarke, Conecuh, Escambia, Mobile, Monroe, Washington.

Louisiana: Acadia, Ascension, Assumption, Avoyelles, East Baton Rouge, East Feliciana, Evangeline, Iberia, Iberville, Jefferson, Lafayette, Lafourche, Livingston, Orleans, Plaquemines, Point Coupee, St. Martin, St. Mary, St. Bernard, St. Charles, St. Helena, St. James, St. John the Baptist, St. Landry, St. Martin, St. Tammany, Tangipahoa, Terrebonne, Vermillion, Washington, West Baton Rouge, West Feliciana.

Mississippi: Adams, Alcorn, Amite, Attala, Benton, Bolivar, Calhoun, Carroll, Chickasaw, Choctaw, Claiborne, Clay, Coahoma, Copiah, DeSoto, Forrest, Franklin, George, Greene, Grenada, Hancock, Harrison, Hinds, Holmes, Humphreys, Issaquena, Itawamba, Jackson, Jefferson, Lafayette, Lamar, Lee, Leflore, Lincoln, Madison, Marion, Marshall, Monroe, Montgomery, Panola, Pearl River, Perry, Pike, Pontotoc, Prentiss, Quitman, Sharkey, Stone, Sunflower, Tallahatchie, Tate, Tippah, Tishomingo, Tunica, Union, Walthall, Warren, Washington, Webster, Wilkinson, Yalobusha, Yazoo.





911 Services

The Public Safety and Homeland Security Bureau (PSHSB) learns the status of each Public Safety Answering Point (PSAP) through the filings of 911 Service Providers in DIRS, reporting to the FCC's Public Safety Support Center, coordination with state 911 Administrators and, if necessary, direct contact with individual PSAPs.

Alabama: No PSAPs are reported as being affected.

Louisiana:

- Livingston Parish 911, St. Mary Parish, and Vermilion Parish 911 are reported as being operational with no location information.
- Orleans Parish and St. John Parish Sheriff's Office have re-routed 911 calls to another PSAP with location information.
- St. Bernard Parish Fire, St. Bernard Parish Sheriff's Office, and Terrebonne Parish have re-routed 911 calls to the administrative lines without location information.

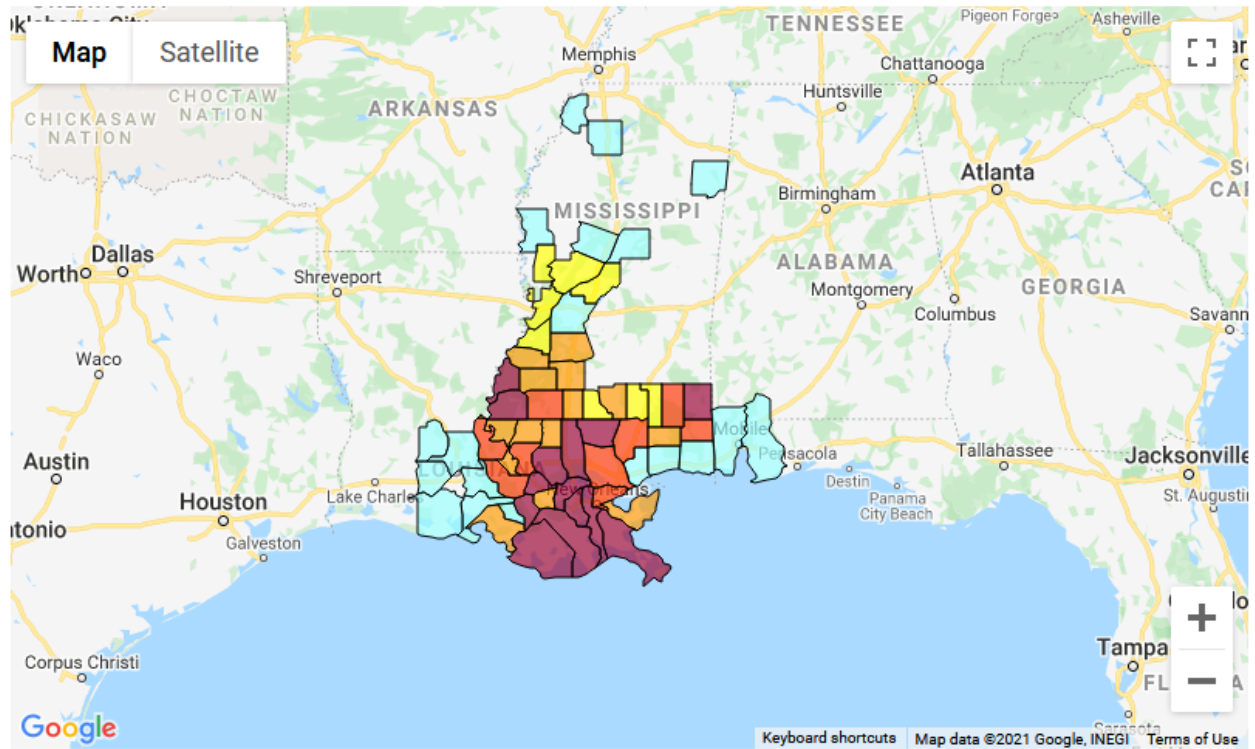
Mississippi: No PSAPs are reported as being affected.

Wireless Services

The current status of wireless communications services and restoration by county is shown by the following map.

Percent Cell Sites Out-of-Service By County

8/30/2021 11:14:13 AM



■ 1 - 15 ■ 16 - 30 ■ 31 - 45 ■ 46 - 60 ■ 61 - 100

The following table provides cell sites out of service by county. 28.1% of the cell sites in the affected area are out of service. The information shown was provided by the signatories to the Wireless Network Resiliency Framework Cooperative Agreement.

Alabama

State	Affected Counties	Cell Sites Served	Cell Sites Out	Percent Out	Cell Sites Out Due to Damage	Cell Sites Out Due to Transport ¹	Cell Sites Out Due to Power
AL	BALDWIN	329	4	1.2%	3	0	1
AL	CLARKE	46	0	0.0%	0	0	0
AL	CONECUH	39	0	0.0%	0	0	0
AL	ESCAMBIA	55	0	0.0%	0	0	0
AL	MOBILE	487	6	1.2%	0	3	3

¹ These are cell sites that are out due to issues with the (typically wireline) networks that route communications traffic to and from the cell sites.



AL	MONROE	31	0	0.0%	0	0	0
AL	WASHINGTON	32	0	0.0%	0	0	0
TOTAL		1,019	10	1.0%	3	3	4

Louisiana

State	Affected Counties	Cell Sites Served	Cell Sites Out	Percent Out	Cell Sites Out Due to Damage	Cell Sites Out Due to Transport	Cell Sites Out Due to Power
LA	ACADIA	45	1	2.2%	1	0	0
LA	ASCENSION	88	55	62.5%	4	14	48
LA	ASSUMPTION	19	19	100.0%	2	6	12
LA	AVOUELLES	52	0	0.0%	0	0	0
LA	EAST BATON ROUGE	360	216	60.0%	14	69	142
LA	EAST FELICIANA	27	12	44.4%	0	4	10
LA	EVANGELINE	41	1	2.4%	1	0	0
LA	IBERIA	46	1	2.2%	1	0	0
LA	IBERVILLE	42	19	45.2%	1	8	11
LA	JEFFERSON	289	202	69.9%	18	67	123
LA	LAFAYETTE	154	0	0.0%	0	0	0
LA	LAFOURCHE	78	76	97.4%	5	26	48
LA	LIVINGSTON	121	89	73.6%	5	25	66
LA	ORLEANS	348	185	53.2%	24	57	111
LA	PLAQUEMINES	56	50	89.3%	5	19	26
LA	POINTE COUPEE	25	15	60.0%	0	8	6
LA	ST. MARY	56	18	32.1%	2	10	6
LA	ST. BERNARD	36	13	36.1%	3	0	10
LA	ST. CHARLES	41	26	63.4%	3	6	17
LA	ST. HELENA	13	5	38.5%	0	0	5
LA	ST. JAMES	33	14	42.4%	3	0	11
LA	ST. JOHN THE BAPTIST	27	19	70.4%	1	1	17
LA	ST. LANDRY	85	2	2.4%	1	1	0
LA	ST. MARTIN	48	2	4.2%	0	2	0
LA	ST. TAMMANY	260	152	58.5%	18	33	101
LA	TANGIPAHOA	118	101	85.6%	7	26	79
LA	TERREBONNE	81	81	100.0%	6	35	46
LA	VERMILION	55	1	1.8%	1	0	0



LA	WASHINGTON	55	42	76.4%	1	13	29
LA	WEST BATON ROUGE	32	11	34.4%	0	7	4
LA	WEST FELICIANA	28	9	32.1%	1	4	5
TOTAL		2,759	1,437	52.1%	128	441	933

Mississippi

State	Affected Counties	Cell Sites Served	Cell Sites Out	Percent Out	Cell Sites Out Due to Damage	Cell Sites Out Due to Transport	Cell Sites Out Due to Power
MS	ADAMS	41	25	61.0%	2	18	5
MS	ALCORN	34	0	0.0%	0	0	0
MS	AMITE	24	11	45.8%	0	5	6
MS	ATTALA	19	2	10.5%	0	2	0
MS	BENTON	19	0	0.0%	0	0	0
MS	BOLIVAR	28	0	0.0%	0	0	0
MS	CALHOUN	19	0	0.0%	0	0	0
MS	CARROLL	24	0	0.0%	0	0	0
MS	CHICKASAW	17	0	0.0%	0	0	0
MS	CHOCTAW	15	0	0.0%	0	0	0
MS	CLAIBORNE	12	2	16.7%	1	0	1
MS	CLAY	10	0	0.0%	0	0	0
MS	COAHOMA	26	0	0.0%	0	0	0
MS	COPIAH	37	12	32.4%	0	8	4
MS	DESOTO	160	0	0.0%	0	0	0
MS	FORREST	84	17	20.2%	2	14	1
MS	FRANKLIN	29	11	37.9%	0	4	7
MS	GEORGE	40	21	52.5%	0	20	1
MS	GREENE	34	21	61.8%	0	21	0
MS	GRENADA	33	0	0.0%	0	0	0
MS	HANCOCK	61	5	8.2%	0	3	2
MS	HARRISON	208	3	1.4%	0	0	3
MS	HINDS	199	23	11.6%	1	16	6
MS	HOLMES	31	1	3.2%	1	0	0
MS	HUMPHREYS	7	0	0.0%	0	0	0
MS	ISSAQUENA	3	0	0.0%	0	0	0
MS	ITAWAMBA	28	0	0.0%	0	0	0
MS	JACKSON	132	2	1.5%	1	1	0



MS	JEFFERSON	45	20	44.4%	0	16	4
MS	LAFAYETTE	83	0	0.0%	0	0	0
MS	LAMAR	75	21	28.0%	0	18	3
MS	LEE	86	0	0.0%	0	0	0
MS	LEFLORE	35	0	0.0%	0	0	0
MS	LINCOLN	59	20	33.9%	2	10	8
MS	MADISON	120	24	20.0%	3	20	1
MS	MARION	25	10	40.0%	0	8	2
MS	MARSHALL	56	0	0.0%	0	0	0
MS	MONROE	52	1	1.9%	0	1	0
MS	MONTGOMERY	23	0	0.0%	0	0	0
MS	PANOLA	40	1	2.5%	0	1	0
MS	PEARL RIVER	82	41	50.0%	1	28	14
MS	PERRY	25	12	48.0%	0	11	1
MS	PIKE	46	15	32.6%	1	2	11
MS	PONTOTOC	37	0	0.0%	0	0	0
MS	PRENTISS	17	0	0.0%	0	0	0
MS	QUITMAN	8	0	0.0%	0	0	0
MS	SHARKEY	11	3	27.3%	0	3	0
MS	STONE	19	7	36.8%	1	6	0
MS	SUNFLOWER	24	0	0.0%	0	0	0
MS	TALLAHATCHIE	19	0	0.0%	0	0	0
MS	TATE	35	0	0.0%	0	0	0
MS	TIPPAH	22	0	0.0%	0	0	0
MS	TISHOMINGO	19	0	0.0%	0	0	0
MS	TUNICA	31	1	3.2%	0	1	0
MS	UNION	33	0	0.0%	0	0	0
MS	WALTHALL	25	7	28.0%	0	2	5
MS	WARREN	50	11	22.0%	0	10	1
MS	WASHINGTON	35	4	11.4%	0	4	0
MS	WEBSTER	22	0	0.0%	0	0	0
MS	WILKINSON	18	12	66.7%	0	5	7
MS	YALOBUSHA	26	0	0.0%	0	0	0
MS	YAZOO	37	11	29.7%	0	11	0
TOTAL		2,714	377	13.9%	16	269	93

The number of cell site outages in a specific area does not necessarily correspond to the availability of wireless service to consumers in that area. See Improving the Resiliency of Mobile Wireless Communications Networks, Order, 31 FCC Rcd 13745, para. 10 (2016) (recognizing the difficulties in accurately depicting the



ongoing status of a wireless provider’s service during emergencies). Wireless networks are often designed with numerous, overlapping cell sites that provide maximum capacity and continuity of service even when an individual site is inoperable. In addition, wireless providers frequently use temporary facilities such as cells-on-wheels (also known as COWs), increased power at operational sites, roaming agreements, or take other actions to maintain service to affected consumers during emergencies or other events that result in cell site outages.

Cable Systems and Wireline (Combined)

Cable and wireline companies reported the following number of subscribers out of service by state in the disaster area; this may include the loss of telephone, television, and/or Internet services:

Alabama	Louisiana	Mississippi
478	338,115	16,106

Broadcast:

Television stations status:

- 15 TV stations reported being operational (KATC, KBTR, KDCG, KLWB, KXKW, WALA-TV, WBRZ, WDBD, WEIQ, WJTV, WLAE-TV, WLBT, WTOK-TV, WVUE-DT, WXXV-TV).
- 2 TV stations are reported as being out of service (WGNO, WNOL-TV).

FM Radio stations status:

- 19 FM radio stations reported being operational (KFXZ, KLFT, KLWB, KOGM, KRVE, KSALU, KSLO, KYMK, WFFF-FM, WFMF, WKSO, WQNZ, WQRG-LP, WQRZ-LP, WQUE-FM, WWUU, WYLD-FM, WYNK-FM).
- 3 AM stations reported being out of service (KVDU, WNOE, WRNO-FM).

AM Radio stations status:

- 6 AM radio stations reported being operational (KFXZ, KSLO, KVOL, WFFF, WJBO, WNAT).
- 2 AM radio stations reported being out of service (WODT, WYLD).

Special Temporary Authority (STA)/Waivers

The Federal Communications Commission (FCC) may grant Special Temporary Authority (STA) to permit immediate or temporary operation of certain radio facilities during emergencies or other urgent conditions, as well as waivers to support emergency communications and service restoration.



During Hurricane Ida, there have been no STAs granted as of 11 am August 30. The FCC granted an ARRL emergency request for a temporary waiver to permit higher symbol rate data transmissions for Hurricane Ida traffic. The FCC also granted a temporary waiver to allow carriers in affected areas greater flexibility in number portability, to assist in restoring service to affected customers more quickly.