

Numbering Resource Utilization in the United States: Status as of December 31, 2020

Industry Analysis Division
Office of Economics and Analytics
July 2025



Inquiries regarding the information in this report may be addressed to OEA-IADreports@fcc.gov.

Table of Contents

Executive Summary.....	1
Highlights	1
Background	2
Analysis and Results.....	4

Tables

1. Number Utilization by Carrier Type as of December 31, 2020.....	9
2. Detail of Number Utilization: Data Reported at the Thousands-block Level.....	9
3. Detail of Number Utilization: Data Reported at the NXX Level	9
4. Number Utilization by State as of December 31, 2020	10
5. Number of Carriers Reporting Numbering Resources as of December 31, 2020.....	11
6. Number Utilization by Area Code as of December 31, 2020	12
7. Assigned, Aging, and Available Numbers by Area Code as of December 31, 2020	18
8. Pooled Thousands-blocks as of December 31, 2020	24
9. Increased Utilization and Numbers Saved due to Thousands-Block Pooling as of December 31, 2020	25
10. Number Utilization for Specialized Non-Geographic Area Codes.....	25
11. Alternate Sources of NPA-NXX Assignments	25
12. Number Utilization over Time.....	27
13. NPA-NXX Assignments, Returns, and Net Assignments	28
14. Porting Activity Since Wireless Porting Started.....	30
15. Numbers in the Porting Database Over Time	31
16. Numbers in the Porting Database by Porting Date as of December 31, 2020	32
17. Numbers Ported from Wireline Carriers by State and Recipient Carrier Type	33
18. Numbers Ported from Wireless Carriers by State and Recipient Carrier Type	34
19. Numbers Ported from VoIP Providers by State and Recipient Carrier Type	35
20. Percentage of Assigned Numbers Currently Ported as of December 31, 2020	36
21. Numbers Assigned for Toll-Free Service	37
22. Numbers Assigned for 800 Toll-Free Service	38
23. Numbers Assigned for 888 Toll-Free Service	38
24. Numbers Assigned for 877 Toll-Free Service	39
25. Numbers Assigned for 866 Toll-Free Service	39
26. Numbers Assigned for 855 Toll-Free Service	40
27. Numbers Assigned for 844 Toll-Free Service	40
28. Numbers Assigned for 833 Toll-Free Service	40
29. Area Codes by State (1947 - 2020).....	41
30. Area Code Assignments (2010 - 2020).....	43

Charts

1. Average Utilization Rates by Number of Thousands-blocks Held in a Rate Center.....	26
2. NPA-NXX Assignments, Returns, and Net Assignments	29

Numbering Resource Utilization in the United States: Status as of December 31, 2020

Executive Summary

This report summarizes an ongoing, systematic collection of comprehensive data on the utilization of telephone numbering resources within the United States. The information was acquired from telecommunications carriers and interconnected voice over Internet Protocol (VoIP) providers (together, carriers) holding numbering resources and was analyzed as part of our ongoing assessment of the efficacy of numbering resource optimization measures prescribed by the Commission's Numbering Resource Optimization (NRO) Orders.¹

Highlights

As of December 31, 2020:

- Overall, 53.8% of all numbers were assigned to end users.
- The overall utilization rate for Competitive Local Exchange Carriers (CLECs) was 51.1%.
- The overall utilization rate for Incumbent LECs was 37.3%.
- The overall utilization rate for Mobile Wireless carriers was 75.9%.
- The overall utilization rate for Paging carriers was 4.8%.
- The overall utilization rate for VoIP providers was 28.9%.
- Thousands-block pooling has made it unnecessary to distribute over 948 million telephone numbers.
- Carriers returned 300 NPA-NXXs to the NANPA in 2020.
- Between when wireless porting began in 2003 and 2020, there were over 729 million numbers ported.
- In 2020, 243 million numbers were in the porting database. As of 2020, 96.1% of ports have been intramodal, meaning numbers are ported between providers of the same service type.
- At the end of 2020, there were over 41 million working toll-free numbers.

¹ See *Numbering Resource Optimization*, CC Docket No. 99-200, Report and Order and Further Notice of Proposed Rulemaking, 15 FCC Rcd 7574 (2000) (*First NRO Order*); *Numbering Resource Optimization*, CC Docket Nos. 99-200, 96-98, Second Report and Order, Order on Reconsideration in CC Docket No. 96-98 and CC Docket No. 99-200, and Second Further Notice of Proposed Rulemaking in CC Docket No. 99-200, 16 FCC Rcd 306 (2000) (*Second NRO Order*); *Numbering Resource Optimization*, CC Docket Nos. 99-200, 96-98, 95-116, Third Report and Order and Second Order on Reconsideration in CC Docket No. 96-98 and CC Docket No. 99-200, 17 FCC Rcd 252 (2001) (*Third NRO Order*); *Numbering Resource Optimization*, CC Docket Nos. 99-200, 96-98, 95-116, Fourth Report and Order in CC Docket No. 99-200 and CC Docket No. 95-116, and Fourth Further Notice of Proposed Rulemaking in CC Docket No. 99-200, 18 FCC Rcd 12472 (2003) (*Fourth NRO Order*).

Background

The United States uses ten-digit telephone numbers, organized in accordance with the North American Numbering Plan (NANP).² The NANP divides the country into separate geographic areas called numbering plan areas (NPAs), more commonly called area codes. Calls between these areas are generally dialed using the three-digit area code, followed by a seven-digit local telephone number.

When the NANP was established in 1947, only 78 area codes were assigned to telecommunications service providers in the United States. Only 36 new codes were added through 1989, but the rate of activation increased dramatically in the 1990s, when 112 new area codes were activated.³ Because the remaining supply of unassigned area codes was diminishing, and because a premature exhaust of area codes imposes significant costs on consumers, the Commission, in 1999, initiated a proceeding to ensure that the limited numbering resources are used efficiently.

In the *First NRO Order*, in 2000, the Commission required users of numbering resources to file utilization data and forecasts twice per year.⁴ Data as of December 31 are due to the North American Numbering Plan Administrator (NANPA) by February 1 of the following year, and data as of June 30 are due by August 1. The data are submitted using FCC Form 502, the Numbering Resource Utilization/Forecast (NRUF) form.⁵

The vast majority of numbering resources reported were part of geographic area codes. That is, the numbers were part of area codes associated with specific regions of the United States or another country. For instance, area code 406 is associated with Montana, and area code 506 is associated with New Brunswick, Canada. Carriers are also required to report on utilization of some non-geographic area codes, such as 5XX numbers and 900 numbers (described later in this report). Carriers use other types of non-geographic numbering resources as well: millions of numbers are used to provide toll-free services using non-geographic area codes such as 800, 888, 877, and 866. These numbering resources are managed separately.

Historically, local telephone companies received geographic numbers in blocks of 10,000. These ten-thousands-blocks of numbers are often called NXXs, or central office codes, and are identifiable as the first three digits of a seven-digit telephone number.⁶ To conserve numbering resources, the Commission's NRO Orders established "thousands-block number pooling," where an NXX is broken into ten sequential blocks of 1,000 numbers.⁷ Carriers may then be required to donate unused or underutilized blocks to the Pooling Administrator (PA), which then assigns those thousands-blocks to other carriers in need of numbers.⁸ This effectively allows the assignment of numbers in blocks of 1,000 rather than 10,000. Most carriers are required to report their number utilization information at the thousands-block level so that the Commission can evaluate the efficacy of

² The North American Numbering Plan is used in the United States and its territories, and in Canada, Bermuda, and many Caribbean nations, including Anguilla, Antigua and Barbuda, the Bahamas, Barbados, British Virgin Islands, Cayman Islands, Dominica, Dominican Republic, Grenada, Jamaica, Montserrat, St. Kitts and Nevis, St. Lucia, St. Vincent and the Grenadines, Trinidad and Tobago, and the Turks and Caicos Islands. The data contained in this report are limited to the United States and its overseas territories.

³ A database containing information about each area code is available at https://reports.nanpa.com/public/npa_report.csv.

⁴ *First NRO Order*, 15 FCC Rcd at 7603, para. 67. On December 1, 2020, the FCC announced that it had selected Somos, Inc. as the current NANPA and PA. Press Release, FCC, *FCC Selects SomosGov as Next Telephone Number Administrator and Reassigned Numbers Database Administrator* (Dec. 1, 2020) available at <https://docs.fcc.gov/public/attachments/DOC-368493A1.pdf> (*NANPA Selection Press Release*).

⁵ FCC Form 502 and most other FCC forms can be downloaded via <http://www.fcc.gov/formpage.html>.

⁶ That is, a ten-thousands-block is the block of 10,000 telephone numbers that have the same area code and the same NXX.

⁷ Pooling for wireline and wireless carriers started in November 2002. For a discussion of this requirement, see *Fourth NRO Order*, 18 FCC Rcd at 12474-77, paras. 5-14.

⁸ As noted above, on December 1, 2020, the FCC announced that it had selected Somos, Inc. as the current NANPA and PA. See *NANPA Selection Press Release*.

telephone number pooling. However, carriers that meet the statutory definition of “rural telephone company”⁹ and operate in non-pooling areas submit their number utilization information at the NXX level.

In this report, we present utilization data for five types of carriers:¹⁰

- Competitive LECs
- Incumbent LECs
- Mobile Wireless Carriers
- Paging Carriers
- VoIP Providers

In June 2015, the Commission adopted the *Direct Access Order*¹¹ granting VoIP providers the ability to obtain numbering resources directly from the NANPA or PA.¹² Prior to this order, VoIP providers were required to partner with a provider to obtain numbers. With almost all VoIP providers receiving their numbers from Competitive LECs, reports prior to this *Order* attributed VoIP numbers to CLECs.

Carriers report on numbering resources in the following six categories:¹³

- Assigned: Numbers in use by an end user.
- Intermediate: Numbers made available by one carrier for use by another.
- Reserved: Numbers held out of use at the request of an end user for future use.
- Aging: Numbers held out of use after the end user discontinues service.
- Administrative: Numbers in use by service providers for network management purposes.
- Available: Numbers available for assignment to end users.

Some carriers receive telephone numbers from other carriers, as opposed to directly from the NANPA. When this occurs, the receiver is required to report utilization data for those numbers, and to mark those numbers as having been received from other carriers.¹⁴

In the past, when numbers were transferred from an Incumbent LEC to another carrier, they were classified as “assigned” because they could not be used elsewhere in the Incumbent LEC’s own system. According to the Commission’s standardized definitions such numbers are “intermediate” numbers, yet some

⁹ See 47 U.S.C. § 153(37).

¹⁰ Carriers classified themselves in a variety of ways on their NRUF forms. Except for interexchange carriers, each carrier type was aggregated into one of five categories for the purposes of this report. Interexchange carriers reported data for area codes 500 and 900, which are summarized in Table 10 of this report. Therefore, there was no need to classify interexchange carriers as one of the five carrier types listed above. Also, carriers may provide multiple types of services but may only indicate their primary line of business on the NRUF form. Only small carriers seem to do this, so the effects of this misclassification should be minor.

¹¹ *Numbering Policies for Modern Communications, et al.*, Report and Order, WC Docket No. 13-97, et al., 30 FCC Rcd 6839 (2015) (*Direct Access Order*).

¹² In light of the contract for the NANPA and PA functions being combined into a single contract (*see NANPA Selection Press Release*), we will refer to the NANPA and PA together as the NANPA.

¹³ Reserved numbers can be held for up to 180 days. Aging numbers may be aged no less than 45 days and no more than 90 days for residential customers and 365 days for commercial customers. For precise definitions of all six of the categories listed, *see* 47 CFR 52.15(f)(1).

¹⁴ This means that sometimes more than one carrier can report utilization data for the same thousands-block (or NXX). The NRUF form contains separate sections for reporting utilization data for numbers received from another carrier and numbers received directly from the NANPA. Some carriers that receive numbers only from other carriers use the incorrect section of the form, however, meaning that in the database, it can appear that more than one carrier reported data for the same block of numbers.

large carriers have not reported these numbers as such. Because in some cases we were unable to match submissions that report intermediate numbers with submissions that report numbers as being received from another carrier, we created filters to ensure that numbers were not double counted.

Where a Regional Bell Operating Company (RBOC) acquired a carrier with Competitive LEC services in the RBOC's operating region, the numbering resources of the acquired Competitive LEC in the RBOC's operating region were counted as Incumbent LEC resources. Where the acquired Competitive LEC provides services outside of the acquirer's operating region, the numbering resources are treated as Competitive LEC resources.

Analysis and Results

Table 1 shows the quantity of telephone numbers and NXXs reported by telecommunications carriers for each of the six categories listed above, as well as the total. Note that the number of unique NXXs for each carrier type does not add up to the total number of unique NXXs.¹⁵ This can occur, for example, when multiple carriers report data for the same NXX due to the pooling of thousands blocks within an NXX. In addition, some carriers reported at the thousands-block level and other carriers reported at the NXX level for the same NXX.

Table 2 presents statistics for numbers reported at the thousands-block level. All geographic numbers must be reported at the thousands-block level unless the carrier is a rural carrier and the telephone numbers serve areas where local number portability has not been implemented.¹⁶

Table 3 presents statistics for numbers reported at the NXX level. Rural telephone companies that provide telecommunications service in areas where local number portability has not been implemented are required to report utilization data at the NXX in those areas.¹⁷ As might be expected, overall utilization rates are lower in rural areas than in more urban areas.

Table 4 shows utilization statistics on a state-by-state basis. States that are relatively rural and have low population densities have a lower percentage of assigned numbers than more urban, populous states. Again, carriers report only numbers that have been assigned to them, so the quantity of available numbers does not include unassigned NXXs.

Table 5 shows the number of Operating Company Numbers (OCNs) that reported telephone number utilization data for each state. Carriers are required to report their NRUF data at the OCN level.¹⁸ Carriers typically obtain one or more OCNs for each state in which they operate.

Table 6 shows utilization statistics by area code. The table also shows the total number of OCNs reporting having numbering resources in each area code. Since carriers report only numbers assigned to them, the quantity of available numbers does not include any NXXs in the state not yet assigned to a carrier.

Table 7 shows assigned, aging, and available numbers for wireline carriers (Incumbent LECs and Competitive LECs), mobile wireless carriers, and VoIP providers, by area code. Table 7 provides some indication of the number of working telephone lines in each area code. The number of working lines per area code cannot be perfectly divined from this information, because the relationship between lines and numbers is not

¹⁵ In some instances, more than one carrier reported numbering utilization data for the same NPA-NXX. Tables 1-3 show the numbers of unique NPA-NXXs reported by each carrier type and by the industry as a whole.

¹⁶ 47 CFR 52.15(f)(5)(iii). Rural carriers are defined in the Communications Act of 1934, as amended, 47 U.S.C. § 153(37).

¹⁷ 47 CFR 52.15(f)(5)(ii).

¹⁸ 47 CFR 52.15(f)(3)(ii). Carriers obtain OCNs from the National Exchange Carrier Association.

always one-to-one. Although mobile wireless carriers typically assign one geographic telephone number to each subscriber, wireline carriers sometimes do not. Some wireline customers want multiple telephone numbers associated with a smaller number of lines, for example, when the customer has a private branch exchange. Other customers, especially those expecting many inbound calls, such as to a help line, may want a single telephone number that serves many lines. Thus, the quantity of telephone numbers in an area code provides only a rough guide to the number of lines in service in each area code.

Further, Table 7 provides the only information the FCC collects for examining churn.¹⁹ After a customer disconnects from a carrier's network and chooses not to port the number to another carrier, that carrier will hold that number out of circulation ("age" the number) for up to ninety days if the customer was a residential subscriber, and up to one year if the customer was a business subscriber. Therefore, the quantity of aging numbers gives some indication of the number of customers that have disconnected in the previous three months to a year. Aging numbers, however, are not a perfect indicator of churn. Aside from not measuring numbers ported to another carrier, not all carriers age their numbers for the full time allowed. Where carriers have limited numbers and cannot immediately obtain new numbers from the NANPA because of central office code (NXX) rationing that may be necessary during area code relief planning, they may assign telephone numbers that have not been aged for the full time that the state regulatory commissions have prescribed. (Thousands-block pooling alleviates this problem by making more numbering resources available.) Therefore, at any given time, the number of aging numbers is likely smaller than the number of customers that have changed providers or disconnected service.

Table 8 focuses on telephone number pooling. It shows the number of thousands-blocks carriers received from the NANPA, the total number of thousands-blocks in telephone rate centers where pooling exists,²⁰ and the percentage of those thousands-blocks that are pooled.

A thousands-block is potentially poolable when 90% or more of the numbers are classified as available for assignment. Pooling is required in the top 100 Metropolitan Statistical Areas (MSAs).²¹ Pooling also occurs in areas where a state regulatory commission has exercised delegated authority to require pooling and where carriers have voluntarily implemented pooling.²² The Commission established an initial national roll-out schedule for thousands-block number pooling for wireline carriers – completed in December 2003²³ – and required most mobile wireless telephony carriers to participate in that schedule starting in August 2003.²⁴

Table 9 examines the efficacy of thousands-block pooling by showing the utilization of the thousands-blocks that were distributed by the NANPA and the utilization rate that would have resulted had whole NXXs been issued.²⁵ Overall, the utilization rate for numbers in pooled blocks was 67.1%. If whole NXXs had been

¹⁹ Churn is the rate at which customers change carriers or disconnect service.

²⁰ A rate center is a geographic area used to determine distances and prices for local and long-distance calls.

²¹ The composition of MSAs may change over time. If a rate center is part of one of the 100 largest MSAs at any time after 1990, then the FCC generally requires number pooling. See *Fourth NRO Order*, 18 FCC Rcd at 12473, para. 2.

²² Thousands-block pooling now exists in some portion of every state. See NANPA, *Thousands-Blocks Reports*, <https://www.nanpa.com/reports/thousands-block-reports> (last visited Dec. 12, 2024).

²³ See *The Common Carrier Bureau Announces The First Quarter Schedule For National Thousands-Block Number Pooling*, CC Docket No. 99-200, Public Notice, 17 FCC Rcd 103 (2001). See also *Numbering Resource Optimization*, CC Docket No. 99-200, Order, 17 FCC Rcd 7347 (2002).

²⁴ See *Fourth NRO Order*, 18 FCC Rcd at 12473, para. 1. Thus, the Commission required wireless telephone carriers to participate in thousands-block number pooling (starting on August 20, 2003) somewhat before they were required to begin deploying local number portability (by November 24, 2003).

²⁵ Calculating the utilization rate had whole NXXs been issued was a 4-step process: 1) the number of thousands-blocks that a carrier held

issued instead of individual thousands-blocks, utilization within those blocks would have been 28.2%. Another way of measuring the benefit of pooling is examining the quantity of telephone numbers saved through pooling. With pooling, 689 million telephone numbers were distributed to carriers in pooling areas. Had there been no pooling, over 1.6 billion telephone numbers would have been distributed. More than 948 million telephone numbers have been saved through thousands-block pooling.

Table 10 shows utilization data for specialized non-geographic area codes. Originally, area code 500 was used for “follow me” service, which, among other things, can be used to route an incoming call to different phone numbers, depending on the time of day. Over the past two decades, more non-geographic area codes in the 500 series have been opened and numbers within them are often used for machine-to-machine communications, such as for alarm systems.²⁶ Area code 900 is used for information services where the caller is not charged long-distance rates set by the caller’s long-distance carrier, but usually is charged much higher prices that are preset by the call’s recipient.

Table 11 focuses on NPA-NXX assignment information. There are three different databases that contain sources of NPA-NXX assignment information: the NANPA’s NRUF database, the NANPA’s NANP Administration System (NAS) database of NPA-NXX assignments, and the LERG Routing Guide (LERG).²⁷ For a variety of reasons, the databases are not identical. Timing is a large factor in the differences. For instance, during an area code split, a carrier will maintain both the old and new NPA-NXXs in its systems during the phase called permissive dialing.²⁸ During permissive dialing, some carriers report utilization data for both the old and the new NPA-NXXs. After permissive dialing ends, the carrier should immediately remove the old NPA-NXXs from the LERG and its own systems. The NANPA also updates its information as well. Some carriers may not remove the old NPA-NXXs from their systems promptly after permissive dialing ends and may therefore report utilization data on both the old and the new NPA-NXXs. Also, carriers sometimes delay updating the LERG after an NPA-NXX has been removed from their switch or when the carrier has given the NPA-NXX back to the NANPA. Consequently, the NRUF database, the NANPA assignment database, and the LERG may not be identical. Table 11 shows the number of NPA-NXXs that appear in the three databases.

Chart 1 shows average utilization rates as a function of the number of thousands-blocks held by carriers of different types within a local geographic area.²⁹ We used rate centers as our local geographic area because

in a rate center was determined; 2) that number was rounded up to the next ten, which is the number of thousands-blocks the carrier would have received if it had received whole NXXs; 3) the number in step 2 was multiplied by 1,000 to calculate the total quantity of telephone numbers the carrier would have had in the rate center; and 4) the number of telephone numbers in that rate center that the carrier assigned to end users was then divided by the quantity of telephone numbers calculated in step 3.

²⁶ For more information, see ATIS, Industry Numbering Committee, Non-Geographic 5XX-NXX Code Assignment Guidelines, ATIS 0300052(2024-10) (Oct. 25, 2024), available at <https://access.atis.org/higherlogic/ws/public/download/78765/ATIS-0300052%282024-10%29.zip/latest>; see also NANPA, 5XX-Nxx Code Reports, <https://www.nanpa.com/reports/5xx-nxx-code-reports> (last visited Dec. 12, 2024).

²⁷ The NANPA’s assignment information can be found online: <https://www.nanpa.com/reports/co-code-reports>. The analysis in Table 11 examines only those codes that NANPA marked “assigned” (i.e., this study does not examine those codes marked “protected”, “reserved”, “unassignable”, or “vacant”). The LERG is published monthly by iconectiv, LLC.

²⁸ During permissive dialing, a phone number may be called by using either the old or the new NPA.

²⁹ The points in Chart 1 were calculated using a three-step process. First, thousands-blocks were grouped depending on the number of thousands-blocks held by a carrier within a rate center. Second, the number of thousands-blocks held in a rate center was rounded to the nearest twenty, to help protect the confidentiality of the data. Third, the average utilization rates were calculated for each of the groups (i.e., from the group of 10 thousands-blocks per rate center through the group of 1,000 thousands-blocks per rate center). For example, for all instances where a carrier reported from 10 to 29 (which round to 20) thousands-blocks in a rate center, the average utilization rate was calculated. A similar average utilization rate was calculated for all instances where, for a carrier in a rate center, the number of thousands-blocks in a rate center was rounded to 40, 60, and so on through 1,000. To preserve carrier confidentiality, some data points have been collapsed into a single data point. For example, if there were only two companies with 350 thousands-blocks in a rate center, and another

thousands-blocks are assigned to carriers on a rate-center basis. Carriers serving densely populated areas may need more than a single thousands-block to provide service. In these densely populated areas, carriers should generally be able to achieve higher utilization rates than carriers serving less densely populated areas, where one thousands-block (or in many rural areas, an NXX) may be used to serve just a few customers.

For ease of comparison, Chart 1 plots utilization rates only when there were 1,000 or fewer thousands-blocks in a rate center. While some Incumbent LECs reported more than 1,000 unique thousands-blocks in a single rate center, the average utilization rates in these rate centers were the same as those where carriers have slightly fewer than 1,000 thousands-blocks in a single rate center. In some cases, Competitive LECs had many thousands-blocks in a single rate center. This is likely because some Competitive LECs provide service to unified messaging services, such as e-fax.³⁰ These services use large quantities of numbers.³¹ Also, before the *Direct Access Order* allowed them to obtain numbers directly from the NANPA, many VoIP providers obtained telephone numbers by partnering with a local exchange carrier through a commercial arrangement. Not all of these numbers have been ported to the VoIP provider, so those numbers remain with the LEC.

Table 12 shows the percentage of numbers that have been assigned to end users over time. The utilization rate for Incumbent LECs is slowly declining and mobile wireless and Competitive LEC utilization rates are generally increasing. The utilization rate for paging services continues to drop.

Table 13 shows, on a semi-annual basis, the number of NXX assignments made by the NANPA, the number of NXXs that have been returned to the NANPA, and the number of net NXX assignments to carriers. The table shows that fewer NXXs generally are being issued each quarter, and that carriers continue to return unneeded NPA-NXXs to the NANPA for reassignment.

Tables 14 through 20 display information on telephone number porting. All telephone number porting information in this report is derived from the local number portability database, which was designed solely for routing calls.³² There are several reasons the quantity of ported numbers in the database at any given time does not equal the sum of numbers ported in prior months. When consumers who have already ported their telephone numbers do so again, the porting database retains only the most recent porting activity for those numbers. Consumers can also port their numbers back to the original carrier, which are counted as ports even though the numbers drop out of the porting database.³³ Also, carriers sometimes port blocks of numbers to other carriers before reassigning them in the LERG. Once the numbers are reassigned, they can be dropped from the porting database.

two companies with 360 thousands-blocks in a rate center, those data points were collapsed. This way, no carrier-specific data are released.

³⁰ Unified messaging services allow end users to receive multiple types of messages (such as voice mail and faxes) at one phone number. Typically, these messages are then digitized and e-mailed to the end user. Because the end user does not need to answer the call personally, the messages can be sent to any phone number in the United States. Thus, unified messaging service providers can operate efficiently by obtaining many thousands-blocks in a single rate center.

³¹ Carriers assigning numbers to unified messaging services are instructed to report numbers as “intermediate” until the numbers are assigned by the unified messaging service providers to end users. Some carriers have assigned large quantities of numbers to unified messaging services but may not have received information back from the unified messaging company as to whether those numbers had been assigned to end users. This may explain why some carriers reported dozens of NXXs in a single rate center yet classified all those numbers as intermediate rather than assigned.

³² The current Local Number Portability Administrator is iconectiv, LLC. *Telcordia Technologies, Inc. Petition to Reform Amendment 57 and to Order a Competitive Bidding Process for Number Portability Administration, et al.*, WC Docket Nos. 07-149, 09-109, 95-116, Order, 31 FCC Rcd 8406 (2016).

³³ When a consumer using a ported number discontinues service entirely, the number drops out of the porting database and is returned to the original carrier.

Table 14 shows, on a semi-annual basis, the quantities of telephone numbers that have been ported since wireless porting started on November 24, 2003. The table shows that most porting activity is intramodal, meaning numbers are usually ported to providers of the same service type. Table 15 shows the quantity of telephone numbers in the porting database over time. Table 16 is based on ports currently in the porting database and shows the period in which the numbers were most recently ported. In June 2013, a technical trial began allowing VoIP providers to obtain numbering resources directly from the NANPA.³⁴ Prior to this trial, any ports to or from a VoIP provider would appear as ports to or from a wireline carrier, as most VoIP providers obtained their numbers from a wireline carrier.

Tables 17 through 19 show the number of ports in the database along with the number of carriers involved in porting. The data are presented on a state-by-state basis with each table representing a carrier type: wireline, wireless, and VoIP. Paging carriers are not required to port numbers. Table 20 shows the percentage of assigned numbers that were ported.

Customers may port numbers multiple times, and in doing so, change the nature of their service (wireline versus wireless versus VoIP). As a result, there are two possible methods of determining whether a number was ported from a wireline carrier. The first method is to use the type of carrier that most recently ported the number away from itself, and the second is to determine which type of carrier originally held the number. The choice of methodologies depends on what is being measured. Because it is useful to know porting patterns for numbers as they are currently being used, Tables 14 and 20 use the porting carrier's type to establish whether a wireline or wireless number is being ported. For the rest of the tables, the original carrier's type is used to determine the porting carrier's type. This is done so that the number of wireless subscribers can be better determined.³⁵ For instance, to properly calculate the number of wireless units at a particular point in time using telephone number data, one can add the quantity of wireless assigned numbers as reported on NRUF forms to the number of ports to wireless carriers and subtract the number of ports from wireless carriers.³⁶

Tables 21 through 28 show information about toll-free numbers in the North American Numbering Plan. AT&T introduced toll-free service in 1967. The Commission changed procedures for routing toll-free calls on May 1, 1993 to make toll-free numbers "portable." This change enabled customers to switch service providers yet retain their toll-free numbers. The quantity of assigned toll-free numbers grew rapidly, and new toll-free calling codes were opened to meet the demand. In March 1996, calling code 888 was placed into service. The third toll-free calling code (877) went into effect April 4, 1998, and the fourth toll-free calling code (866) went into effect July 29, 2000. The fifth toll-free calling code (855) went into effect October 10, 2010, the sixth toll-free calling code (844) went into effect December 7, 2013 and the seventh toll-free calling code (833) went into effect June 3, 2017. Tables 21 through 28 show the growth of each individual toll-free code over the past decade: 800, 888, 877, 866, 855, 844, and 833, respectively.

Table 29 shows the current list of area codes, the state or territory they serve and the month the code was opened. Table 30 shows area code assignments since January 2010, along with the month the code was added and the code that served the area previously.

³⁴ *Numbering Policies for Modern Communications; IP-Enabled Services; Telephone Number Requirements for IP-Enabled Services Providers; Telephone Number Portability; Developing a Unified Inter-carrier Compensation Regime; Connect America Fund; Numbering Resource Optimization; Petition of Vonage Holdings Corp. for Limited Waiver of Section 52.15(f)(2)(i) of the Commission's Rules Regarding Access to Numbering Resources*, WC Docket Nos. 13-97, 04-36, 07-243, 10-90, CC Docket Nos. 95-116, 01-92, Order, 28 FCC Red 8889, para. 1 (WCB 2013).

³⁵ According to NRUF rules, a number that is ported to another carrier is classified as assigned. To avoid double counting, the recipient of the ported number does not report ported numbers in NRUF. See 47 CFR. § 52.15(f)(1)(v).

³⁶ If carriers assign more than one number to a mobile wireless unit, this method will slightly overestimate the number of wireless units.

Table 1
Number Utilization by Carrier Type as of December 31, 2020

Carrier Type	Assigned	Intermediate	Reserved	Aging	Administrative	Available ¹	Total	Unique ² NXXs
	(Thousands of telephone numbers)							
Competitive LEC	262,917	14,454	1,844	14,551	1,239	219,204	514,208	91,260
Incumbent LEC	193,366	21,946	3,585	4,761	8,135	287,050	518,842	61,710
Mobile Wireless	439,231	1,051	3,051	16,608	4,100	114,681	578,721	89,608
Paging	2,234	162	533	64	71	43,103	46,166	4,184
VoIP	6,473	0	23	612	4	15,303	22,414	14,817
All Reporting Carriers	904,222	37,612	9,034	36,596	13,549	679,339	1,680,352	171,418
Competitive LEC	51.1%	2.8%	0.4%	2.8%	0.2%	42.6%	100%	
Incumbent LEC	37.3%	4.2%	0.7%	0.9%	1.6%	55.3%	100%	
Mobile Wireless	75.9%	0.2%	0.5%	2.9%	0.7%	19.8%	100%	
Paging	4.8%	0.4%	1.2%	0.1%	0.2%	93.4%	100%	
VoIP	28.9%	0.0%	0.1%	2.7%	0.0%	68.3%	100%	
All Reporting Carriers	53.8%	2.2%	0.5%	2.2%	0.8%	40.4%	100%	

Table 2
Detail of Number Utilization: Non-rural Carriers
(Reported at the Thousands-block Level)

Carrier Type	Assigned	Intermediate	Reserved	Aging	Administrative	Available ¹	Total	Unique ² NXXs
	(Thousands of telephone numbers)							
Competitive LEC	262,343	14,450	1,761	14,501	1,203	213,156	507,414	90,656
Incumbent LEC	190,065	21,689	2,817	4,558	7,948	249,331	476,408	57,501
Mobile Wireless	437,883	1,027	2,935	16,555	3,913	111,479	573,791	89,132
Paging	2,071	149	505	35	40	42,356	45,157	4,099
VoIP	6,471	0	23	612	4	15,293	22,403	14,816
All Reporting Carriers	898,833	37,315	8,040	36,260	13,110	631,615	1,625,173	166,088
Competitive LEC	51.7%	2.8%	0.3%	2.9%	0.2%	42.0%	100%	
Incumbent LEC	39.9%	4.6%	0.6%	1.0%	1.7%	52.3%	100%	
Mobile Wireless	76.3%	0.2%	0.5%	2.9%	0.7%	19.4%	100%	
Paging	4.6%	0.3%	1.1%	0.1%	0.1%	93.8%	100%	
VoIP	28.9%	0.0%	0.1%	2.7%	0.0%	68.3%	100%	
All Reporting Carriers	55.3%	2.3%	0.5%	2.2%	0.8%	38.9%	100%	

Table 3
Detail of Number Utilization: Rural Carriers
(Reported at the NXX Level)

Carrier Type	Assigned	Intermediate	Reserved	Aging	Administrative	Available ¹	Total	Unique ² NXXs
	(Thousands of telephone numbers)							
Competitive LEC	574	4	83	50	36	6,048	6,794	679
Incumbent LEC	3,301	257	768	203	186	37,718	42,434	4,247
Mobile Wireless	1,348	24	116	53	186	3,202	4,930	491
Paging	163	12	27	29	31	747	1,010	85
VoIP	2	0	0	0	0	10	11	1
All Reporting Carriers	5,388	298	994	335	439	47,725	55,179	5,501
Competitive LEC	8.5%	0.1%	1.2%	0.7%	0.5%	89.0%	100%	
Incumbent LEC	7.8%	0.6%	1.8%	0.5%	0.4%	88.9%	100%	
Mobile Wireless	27.4%	0.5%	2.4%	1.1%	3.8%	64.9%	100%	
Paging	16.1%	1.2%	2.7%	2.9%	3.1%	74.0%	100%	
VoIP	13.9%	0.0%	0.0%	0.0%	0.0%	86.0%	100%	
All Reporting Carriers	9.8%	0.5%	1.8%	0.6%	0.8%	86.5%	100%	

Source: Numbering Resource Utilization/Forecast Reports data filed with iconectiv, LLC as of December 31, 2020 (88.7% of NXXs reported).

¹ Includes only telephone numbers in NXXs assigned to carriers and therefore available for assignment to customers. Does not include any numbers in NXXs that have not yet been assigned to carriers.

² Unduplicated total.

Note: Figures may not add due to rounding. Where an RBOC has acquired a carrier with CLEC services in the RBOC's operating region, the numbering resources of the acquired CLEC that are in the RBOC's operating region are counted as incumbent LEC resources. Where the acquired CLEC provides services outside of the acquirer's operating region, the numbering resources are treated as CLEC resources.

Table 4
Number Utilization by State as of December 31,
2020

State / Jurisdiction	Assigned		Intermediate		Reserved		Aging		Administrative		Available ¹		Total 000s
	000s	%	000s	%	000s	%	000s	%	000s	%	000s	%	
Alabama	12,100	47.8	1,542	6.1	121	0.5	512	2.0	247	1.0	10,769	42.6	25,289
Alaska	1,744	27.5	166	2.6	20	0.3	41	0.7	80	1.3	4,286	67.6	6,338
American Samoa	59	32.7	0	0.2	1	0.6	14	7.9	4	2.2	101	56.4	180
Arizona	17,780	63.4	255	0.9	124	0.4	761	2.7	1,063	3.8	8,074	28.8	28,057
Arkansas	6,748	41.3	309	1.9	62	0.4	324	2.0	76	0.5	8,825	54.0	16,343
California	111,981	58.9	2,654	1.4	888	0.5	3,943	2.1	1,289	0.7	69,455	36.5	190,208
Colorado	16,971	61.3	248	0.9	179	0.6	719	2.6	806	2.9	8,741	31.6	27,664
Connecticut	9,541	55.3	192	1.1	67	0.4	328	1.9	44	0.3	7,071	41.0	17,243
Delaware	3,389	62.1	67	1.2	22	0.4	248	4.5	11	0.2	1,720	31.5	5,458
District of Columbia	5,646	74.2	68	0.9	58	0.8	159	2.1	16	0.2	1,657	21.8	7,605
Florida	52,237	58.4	5,170	5.8	688	0.8	2,156	2.4	712	0.8	28,449	31.8	89,412
Georgia	27,519	56.7	4,003	8.3	195	0.4	1,207	2.5	409	0.8	15,162	31.3	48,495
Guam	349	41.6	0	0.0	29	3.4	25	3.0	38	4.5	399	47.5	840
Hawaii	3,819	62.4	6	0.1	27	0.4	117	1.9	187	3.1	1,960	32.0	6,116
Idaho	4,395	55.6	49	0.6	63	0.8	225	2.9	288	3.6	2,881	36.5	7,902
Illinois	37,268	48.4	764	1.0	299	0.4	1,261	1.6	419	0.5	36,955	48.0	76,966
Indiana	16,252	47.8	514	1.5	147	0.4	622	1.8	152	0.4	16,327	48.0	34,013
Iowa	8,478	36.5	273	1.2	125	0.5	664	2.9	308	1.3	13,388	57.6	23,237
Kansas	8,963	42.3	479	2.3	266	1.3	392	1.8	158	0.7	10,938	51.6	21,195
Kentucky	9,595	43.1	1,041	4.7	87	0.4	453	2.0	126	0.6	10,956	49.2	22,259
Louisiana	11,581	46.4	1,578	6.3	78	0.3	628	2.5	237	0.9	10,870	43.5	24,972
Maine	3,219	44.0	129	1.8	66	0.9	135	1.8	38	0.5	3,736	51.0	7,323
Maryland	19,066	62.4	286	0.9	125	0.4	756	2.5	127	0.4	10,176	33.3	30,536
Massachusetts	23,281	56.3	490	1.2	275	0.7	840	2.0	141	0.3	16,344	39.5	41,371
Michigan	29,557	48.2	498	0.8	241	0.4	1,026	1.7	196	0.3	29,841	48.6	61,358
Minnesota	16,698	48.8	400	1.2	137	0.4	577	1.7	508	1.5	15,885	46.4	34,205
Mississippi	7,042	41.3	866	5.1	47	0.3	311	1.8	161	0.9	8,633	50.6	17,060
Missouri	16,046	45.9	695	2.0	192	0.5	674	1.9	181	0.5	17,167	49.1	34,956
Montana	2,641	36.3	24	0.3	33	0.4	90	1.2	72	1.0	4,424	60.7	7,284
Nebraska	6,114	46.1	98	0.7	38	0.3	398	3.0	223	1.7	6,383	48.2	13,253
Nevada	8,512	62.3	140	1.0	132	1.0	355	2.6	93	0.7	4,438	32.5	13,671
New Hampshire	3,359	47.7	60	0.9	69	1.0	100	1.4	16	0.2	3,439	48.8	7,042
New Jersey	27,876	58.1	567	1.2	252	0.5	1,014	2.1	188	0.4	18,096	37.7	47,992
New Mexico	5,063	54.3	81	0.9	124	1.3	285	3.1	278	3.0	3,491	37.4	9,322
New York	61,516	60.0	1,215	1.2	640	0.6	3,011	2.9	414	0.4	35,773	34.9	102,570
North Carolina	23,173	53.4	2,673	6.2	315	0.7	984	2.3	343	0.8	15,882	36.6	43,370
North Dakota	1,956	28.3	31	0.4	16	0.2	83	1.2	43	0.6	4,789	69.2	6,917
Northern Mariana Islands	89	26.3	0	0.0	60	17.8	7	2.1	1	0.4	182	53.5	340
Ohio	33,053	52.5	748	1.2	289	0.5	1,301	2.1	299	0.5	27,302	43.3	62,993
Oklahoma	8,955	40.6	614	2.8	49	0.2	405	1.8	121	0.5	11,918	54.0	22,060
Oregon	10,698	55.5	186	1.0	196	1.0	414	2.1	331	1.7	7,465	38.7	19,289
Pennsylvania	40,608	58.0	673	1.0	299	0.4	1,478	2.1	258	0.4	26,683	38.1	70,000
Puerto Rico	6,201	62.0	62	0.6	51	0.5	267	2.7	33	0.3	3,394	33.9	10,007
Rhode Island	2,810	56.3	60	1.2	18	0.4	150	3.0	14	0.3	1,936	38.8	4,987
South Carolina	10,604	50.1	1,410	6.7	83	0.4	469	2.2	207	1.0	8,402	39.7	21,176
South Dakota	2,196	32.3	17	0.2	22	0.3	91	1.3	53	0.8	4,411	65.0	6,791
Tennessee	16,460	51.0	2,428	7.5	134	0.4	705	2.2	269	0.8	12,271	38.0	32,266
Texas	74,890	56.2	2,386	1.8	827	0.6	2,939	2.2	846	0.6	51,399	38.6	133,287
Utah	9,041	60.7	115	0.8	51	0.3	348	2.3	329	2.2	5,020	33.7	14,904
Vermont	1,944	37.6	78	1.5	52	1.0	99	1.9	14	0.3	2,978	57.7	5,164
Virgin Islands	160	33.3	1	0.2	3	0.5	4	0.8	3	0.6	310	64.6	480
Virginia	24,259	60.9	385	1.0	209	0.5	1,101	2.8	159	0.4	13,716	34.4	39,830
Washington	20,134	61.7	267	0.8	212	0.6	588	1.8	667	2.0	10,762	33.0	32,630
West Virginia	4,444	42.7	103	1.0	53	0.5	174	1.7	39	0.4	5,598	53.8	10,413
Wisconsin	14,574	46.2	435	1.4	133	0.4	550	1.7	154	0.5	15,670	49.7	31,516
Wyoming	1,570	37.4	14	0.3	46	1.1	65	1.6	62	1.5	2,442	58.2	4,198
United States	904,222	53.8	37,612	2.2	9,034	0.5	36,596	2.2	13,549	0.8	679,339	40.4	1,680,352

Source: Numbering Resource Utilization/Forecast Reports data filed with iconectiv, LLC as of December 31, 2020.

¹ Includes only telephone numbers in NXXs assigned to carriers and therefore available for assignment to customers. Does not include any numbers in NXXs that have not yet been assigned to carriers.

Note: Figures may not add due to rounding.

Table 5
Number of Carriers Reporting Numbering Resources as of December 31, 2020¹

State / Jurisdiction	Competitive LEC ²	Incumbent LEC ²	Mobile Wireless ²	Paging ²	VoIP ²	Unduplicated Total
Alabama	43	27	13	6	9	98
Alaska	6	23	13	0	1	43
American Samoa	0	1	3	0	0	4
Arizona	31	15	11	4	10	71
Arkansas	24	27	11	4	4	70
California	56	15	10	8	11	100
Colorado	39	34	15	5	11	104
Connecticut	28	2	9	3	6	48
Delaware	23	1	6	3	3	36
District Of Columbia	30	1	8	3	6	48
Florida	60	10	17	6	16	109
Georgia	50	26	13	5	10	104
Guam	2	1	3	0	0	6
Hawaii	11	3	6	1	3	24
Idaho	27	24	14	3	5	73
Illinois	58	47	14	4	12	135
Indiana	55	30	13	2	6	106
Iowa	85	148	15	3	7	257
Kansas	49	48	15	3	6	121
Kentucky	51	15	19	2	6	93
Louisiana	40	15	9	5	6	75
Maine	21	17	8	3	4	53
Maryland	48	2	13	3	9	75
Massachusetts	39	3	10	3	11	66
Michigan	53	33	12	2	5	105
Minnesota	64	88	11	2	7	172
Mississippi	31	15	12	3	7	68
Missouri	41	48	13	7	7	116
Montana	22	22	14	2	5	65
Nebraska	30	45	13	2	5	95
Nevada	33	13	11	3	5	65
New Hampshire	22	6	9	4	4	45
New Jersey	50	3	11	3	11	78
New Mexico	27	17	12	3	4	63
New York	68	29	11	8	14	130
North Carolina	47	23	13	3	7	93
North Dakota	25	33	11	0	6	75
Northern Mariana Islands	0	1	2	0	0	3
Ohio	56	37	13	3	10	119
Oklahoma	32	40	16	3	6	98
Oregon	40	32	11	3	6	92
Pennsylvania	59	28	21	6	11	126
Puerto Rico	10	1	6	0	0	17
Rhode Island	17	1	7	3	6	34
South Carolina	36	21	8	4	6	75
South Dakota	27	40	9	0	6	82
Tennessee	52	23	14	4	9	102
Texas	87	57	24	8	15	191
Utah	23	17	14	2	8	64
Vermont	19	8	8	4	3	42
Virgin Islands	2	1	5	0	0	8
Virginia	52	20	14	5	9	100
Washington	42	23	12	3	8	88
West Virginia	29	7	15	5	6	62
Wisconsin	52	65	14	3	7	141
Wyoming	15	15	11	0	5	46
Unduplicated Total	1,708	1,124	204	46	29	3,111

Source: Numbering Resource Utilization/Forecast Reports data filed with iconectiv, LLC as of December 31, 2020.

¹ Company numbers determined by counting operating company numbers (OCNs). Carriers typically obtain at least one OCN per state in which they do business. Thus, carriers with multiple OCNs are counted multiple times with the exception that is noted following Table 3.

² Carriers occasionally misclassify the type of service that they provide. For instance, the competitive LEC operations of incumbent LECs are occasionally classified as incumbent LEC operations.

Table 6
Number Utilization by Area Code as of December 31, 2020

Area Code	State / Jurisdiction	Area Code Opened	Assigned	Intermediate	Reserved	Aging	Administrative	Available	OCNs
201	New Jersey	January-47	63.5 %	1.1 %	0.4 %	2.0 %	0.6 %	32.3 %	50
202	District Of Columbia	January-47	74.2 %	0.9 %	0.8 %	2.1 %	0.2 %	21.8 %	48
203	Connecticut	January-47	57.3 %	1.0 %	0.4 %	1.3 %	0.2 %	39.8 %	34
205	Alabama	January-47	55.1 %	8.1 %	0.4 %	2.4 %	1.2 %	32.8 %	54
206	Washington	January-47	68.2 %	0.7 %	0.3 %	1.8 %	2.7 %	26.2 %	48
207	Maine	January-47	44.0 %	1.8 %	0.9 %	1.8 %	0.5 %	51.0 %	59
208	Idaho	January-47	55.6 %	0.6 %	0.8 %	2.9 %	3.7 %	36.4 %	75
209	California	January-58	56.9 %	1.5 %	0.4 %	2.4 %	0.6 %	38.2 %	50
210	Texas	November-92	71.3 %	2.1 %	0.4 %	2.8 %	0.6 %	22.8 %	42
212	New York	January-47	68.5 %	0.0 %	0.7 %	2.3 %	0.2 %	28.2 %	33
213	California	January-47	58.2 %	2.5 %	0.8 %	2.6 %	1.1 %	34.9 %	54
214	Texas	January-47	66.8 %	0.6 %	0.4 %	1.8 %	0.9 %	29.5 %	47
215	Pennsylvania	January-47	62.4 %	0.6 %	0.7 %	2.0 %	0.3 %	34.0 %	45
216	Ohio	January-47	59.5 %	0.8 %	0.3 %	2.5 %	0.5 %	36.4 %	41
217	Illinois	January-47	35.8 %	0.7 %	0.4 %	1.8 %	0.6 %	60.7 %	59
218	Minnesota	January-47	33.0 %	0.3 %	0.3 %	1.5 %	1.0 %	63.9 %	72
219	Indiana	January-47	51.1 %	1.7 %	0.4 %	2.3 %	0.2 %	44.4 %	38
220	Ohio	April-15	39.8 %	0.4 %	0.2 %	4.0 %	0.0 %	55.6 %	13
223	Pennsylvania	September-17	33.8 %	1.0 %	0.2 %	3.9 %	0.0 %	61.2 %	28
224	Illinois	January-02	64.1 %	1.8 %	0.6 %	3.0 %	0.5 %	30.0 %	41
225	Louisiana	August-98	53.0 %	7.1 %	0.3 %	2.8 %	0.9 %	35.8 %	42
228	Mississippi	September-97	51.5 %	3.7 %	0.3 %	1.4 %	1.3 %	41.8 %	37
229	Georgia	August-00	41.9 %	3.2 %	0.5 %	2.6 %	0.4 %	51.5 %	41
231	Michigan	June-99	35.2 %	0.8 %	0.4 %	1.7 %	0.2 %	61.7 %	43
234	Ohio	October-00	47.3 %	1.7 %	0.6 %	3.3 %	0.2 %	46.9 %	41
239	Florida	March-02	63.6 %	0.6 %	1.6 %	3.2 %	0.8 %	30.2 %	33
240	Maryland	June-97	62.8 %	1.4 %	0.4 %	2.6 %	0.4 %	32.4 %	60
248	Michigan	May-97	59.2 %	0.9 %	0.3 %	1.4 %	0.4 %	37.8 %	41
251	Alabama	June-01	49.1 %	5.3 %	0.4 %	2.2 %	1.2 %	41.8 %	49
252	North Carolina	March-98	46.0 %	1.0 %	1.1 %	2.6 %	0.5 %	48.7 %	38
253	Washington	April-97	64.8 %	0.9 %	0.6 %	2.0 %	2.3 %	29.4 %	38
254	Texas	May-97	43.5 %	1.5 %	0.5 %	2.4 %	0.5 %	51.6 %	51
256	Alabama	March-98	48.1 %	6.2 %	0.5 %	2.0 %	1.0 %	42.1 %	51
260	Indiana	January-02	49.7 %	0.8 %	0.5 %	1.6 %	0.3 %	47.1 %	38
262	Wisconsin	September-99	53.7 %	1.2 %	0.4 %	2.3 %	0.4 %	42.0 %	45
267	Pennsylvania	July-99	66.9 %	1.2 %	0.3 %	3.5 %	0.5 %	27.7 %	52
269	Michigan	July-02	44.5 %	0.9 %	0.8 %	2.1 %	0.4 %	51.4 %	43
270	Kentucky	April-99	36.7 %	4.2 %	0.6 %	1.5 %	0.4 %	56.6 %	57
272	Pennsylvania	October-13	42.2 %	0.9 %	0.1 %	1.8 %	0.0 %	54.9 %	36
276	Virginia	September-01	40.7 %	0.9 %	0.7 %	2.0 %	0.4 %	55.3 %	45
279	California	March-18	56.3 %	2.5 %	0.7 %	5.2 %	0.1 %	35.2 %	21
281	Texas	November-96	57.1 %	1.3 %	0.6 %	1.8 %	0.5 %	38.7 %	50
301	Maryland	January-47	62.0 %	0.7 %	0.4 %	2.3 %	0.3 %	34.4 %	47
302	Delaware	January-47	62.1 %	1.2 %	0.4 %	4.5 %	0.2 %	31.5 %	36
303	Colorado	January-47	59.6 %	0.1 %	0.8 %	1.9 %	5.6 %	32.0 %	35
304	West Virginia	January-47	47.6 %	1.0 %	0.5 %	1.7 %	0.5 %	48.7 %	57
305	Florida	January-47	50.0 %	12.1 %	0.5 %	1.5 %	1.2 %	34.8 %	40
307	Wyoming	January-47	37.4 %	0.3 %	1.1 %	1.6 %	1.5 %	58.2 %	46
308	Nebraska	January-55	38.3 %	0.3 %	0.2 %	0.6 %	1.9 %	58.6 %	54
309	Illinois	January-57	38.0 %	0.7 %	1.1 %	1.4 %	0.6 %	58.2 %	68
310	California	November-91	59.0 %	0.5 %	0.6 %	1.0 %	0.5 %	38.4 %	44
312	Illinois	January-47	63.2 %	1.4 %	0.4 %	1.3 %	0.9 %	32.9 %	48
313	Michigan	January-47	56.5 %	1.4 %	0.4 %	2.1 %	0.6 %	39.1 %	42
314	Missouri	January-47	62.0 %	2.4 %	0.6 %	2.0 %	0.8 %	32.2 %	37
315	New York	January-47	52.4 %	2.5 %	0.8 %	2.6 %	0.3 %	41.4 %	53
316	Kansas	January-47	70.5 %	3.0 %	0.2 %	1.7 %	0.6 %	24.0 %	38
317	Indiana	January-47	60.4 %	1.8 %	0.4 %	1.8 %	0.7 %	34.8 %	44
318	Louisiana	January-57	43.5 %	4.7 %	0.4 %	2.4 %	1.2 %	47.8 %	46
319	Iowa	January-47	40.1 %	1.2 %	0.4 %	3.5 %	1.3 %	53.5 %	80
320	Minnesota	March-96	35.4 %	0.5 %	0.4 %	1.7 %	0.8 %	61.2 %	70
321	Florida	November-99	63.2 %	7.3 %	0.4 %	3.3 %	0.7 %	24.9 %	40
323	California	June-98	62.7 %	1.2 %	0.5 %	2.7 %	0.7 %	32.2 %	42
325	Texas	April-03	36.9 %	1.0 %	0.5 %	1.6 %	0.1 %	59.9 %	44
326	Ohio	March-20	28.0 %	0.0 %	0.0 %	0.1 %	7.9 %	64.0 %	10
330	Ohio	March-96	53.8 %	0.8 %	0.4 %	1.8 %	0.5 %	42.7 %	40

Table 6
Number Utilization by Area Code as of December 31, 2020

Area Code	State / Jurisdiction	Area Code Opened	Assigned	Intermediate	Reserved	Aging	Administrative	Available	OCNs
331	Illinois	October-07	58.2 %	2.3 %	0.5 %	3.6 %	0.5 %	34.9 %	37
332	New York	June-17	67.9 %	5.0 %	2.9 %	3.2 %	0.3 %	20.7 %	33
334	Alabama	January-95	39.8 %	4.8 %	0.6 %	1.6 %	0.7 %	52.5 %	59
336	North Carolina	December-97	53.8 %	6.5 %	0.4 %	2.2 %	0.9 %	36.2 %	50
337	Louisiana	October-99	41.1 %	5.1 %	0.4 %	2.2 %	0.8 %	50.5 %	41
339	Massachusetts	May-01	63.9 %	3.0 %	0.3 %	3.5 %	0.5 %	28.9 %	27
340	Virgin Islands	June-97	33.3 %	0.2 %	0.5 %	0.8 %	0.6 %	64.6 %	8
341	California	July-19	44.2 %	1.2 %	1.3 %	4.7 %	0.0 %	48.5 %	17
346	Texas	July-14	68.7 %	1.9 %	1.0 %	4.4 %	0.2 %	23.9 %	46
347	New York	October-99	79.1 %	0.8 %	0.4 %	3.3 %	0.6 %	15.8 %	42
351	Massachusetts	May-01	38.8 %	2.7 %	0.2 %	11.9 %	0.0 %	46.3 %	23
352	Florida	December-95	55.0 %	3.2 %	0.9 %	2.7 %	0.8 %	37.3 %	43
360	Washington	January-95	57.3 %	1.0 %	0.6 %	1.8 %	1.9 %	37.5 %	67
361	Texas	February-99	46.6 %	0.9 %	0.3 %	2.4 %	0.6 %	49.1 %	46
364	Kentucky	March-14	30.1 %	2.0 %	0.0 %	1.7 %	0.0 %	66.2 %	14
380	Ohio	February-16	52.5 %	2.2 %	0.6 %	3.1 %	0.1 %	41.5 %	25
385	Utah	March-09	73.3 %	2.0 %	0.8 %	4.9 %	0.4 %	18.6 %	35
386	Florida	February-01	52.2 %	7.3 %	0.4 %	2.7 %	0.6 %	37.0 %	39
401	Rhode Island	January-47	56.3 %	1.2 %	0.4 %	3.0 %	0.3 %	38.8 %	34
402	Nebraska	January-47	50.5 %	1.0 %	0.3 %	4.5 %	1.7 %	42.1 %	63
404	Georgia	January-47	60.4 %	12.1 %	0.4 %	1.8 %	1.9 %	23.3 %	39
405	Oklahoma	January-47	50.5 %	3.1 %	0.3 %	2.0 %	0.8 %	43.3 %	50
406	Montana	January-47	36.3 %	0.3 %	0.4 %	1.2 %	1.0 %	60.7 %	65
407	Florida	April-88	61.3 %	6.6 %	1.0 %	2.1 %	0.8 %	28.2 %	47
408	California	January-59	61.1 %	1.0 %	0.2 %	1.2 %	0.5 %	36.0 %	51
409	Texas	November-82	50.3 %	5.2 %	0.2 %	2.1 %	0.4 %	41.9 %	43
410	Maryland	October-91	59.4 %	0.6 %	0.5 %	2.0 %	0.3 %	37.2 %	46
412	Pennsylvania	January-47	60.9 %	0.8 %	0.6 %	1.7 %	0.4 %	35.6 %	48
413	Massachusetts	January-47	53.3 %	1.3 %	0.4 %	1.8 %	0.2 %	43.0 %	40
414	Wisconsin	January-47	62.9 %	2.2 %	0.2 %	2.4 %	1.0 %	31.3 %	37
415	California	January-47	61.5 %	1.5 %	0.5 %	1.6 %	0.5 %	34.4 %	49
417	Missouri	January-50	42.2 %	1.7 %	0.8 %	1.8 %	0.6 %	52.9 %	57
419	Ohio	January-47	42.2 %	2.8 %	0.7 %	1.4 %	0.5 %	52.4 %	66
423	Tennessee	September-95	48.6 %	5.4 %	0.7 %	2.5 %	0.6 %	42.2 %	56
424	California	August-06	63.1 %	3.4 %	0.6 %	4.0 %	0.3 %	28.7 %	48
425	Washington	April-97	67.1 %	0.9 %	0.7 %	1.6 %	2.1 %	27.6 %	37
430	Texas	February-03	24.1 %	1.4 %	0.1 %	1.9 %	0.1 %	72.3 %	35
432	Texas	April-03	45.2 %	2.6 %	2.2 %	2.3 %	0.3 %	47.4 %	35
434	Virginia	June-01	51.9 %	1.3 %	0.6 %	2.0 %	0.5 %	43.9 %	40
435	Utah	September-97	39.2 %	0.6 %	0.2 %	1.8 %	1.7 %	56.5 %	57
440	Ohio	August-97	51.5 %	0.9 %	0.6 %	1.9 %	0.3 %	44.9 %	45
442	California	November-09	43.9 %	2.4 %	0.8 %	4.4 %	0.2 %	48.2 %	47
443	Maryland	June-97	68.4 %	1.1 %	0.4 %	3.1 %	0.4 %	26.6 %	46
445	Pennsylvania	March-18	41.3 %	2.1 %	0.2 %	1.4 %	0.0 %	55.0 %	23
458	Oregon	February-10	36.5 %	2.1 %	0.6 %	3.3 %	0.2 %	57.4 %	30
463	Indiana	November-16	50.4 %	3.4 %	0.4 %	3.3 %	0.1 %	42.3 %	25
469	Texas	July-99	70.0 %	1.8 %	0.8 %	3.2 %	0.9 %	23.2 %	63
470	Georgia	February-10	72.6 %	3.3 %	0.5 %	4.9 %	0.3 %	18.4 %	47
475	Connecticut	December-09	61.4 %	2.4 %	0.6 %	5.2 %	0.2 %	30.2 %	28
478	Georgia	August-00	51.2 %	4.2 %	0.4 %	2.5 %	0.8 %	40.8 %	39
479	Arkansas	January-02	46.5 %	1.5 %	0.4 %	2.3 %	0.6 %	48.5 %	38
480	Arizona	March-99	74.3 %	0.7 %	0.5 %	2.6 %	4.3 %	17.6 %	40
484	Pennsylvania	June-99	60.3 %	1.7 %	0.5 %	2.6 %	0.3 %	34.7 %	53
501	Arkansas	January-47	49.5 %	2.9 %	0.4 %	2.4 %	0.6 %	44.3 %	37
502	Kentucky	January-47	52.6 %	10.0 %	0.3 %	2.6 %	0.9 %	33.7 %	40

United States

Table 6
Number Utilization by Area Code as of December 31, 2020

Area Code	State / Jurisdiction	Area Code Opened	Assigned	Intermediate	Reserved	Aging	Administrative	Available	OCNs
503	Oregon	January-47	61.5 %	0.4 %	0.4 %	2.0 %	2.4 %	33.3 %	54
504	Louisiana	January-47	53.6 %	8.7 %	0.3 %	2.7 %	1.0 %	33.8 %	36
505	New Mexico	January-47	63.0 %	0.8 %	0.4 %	3.6 %	3.7 %	28.6 %	44
507	Minnesota	January-54	31.7 %	0.3 %	0.4 %	1.1 %	0.4 %	66.0 %	88
508	Massachusetts	July-88	59.3 %	0.8 %	1.1 %	1.5 %	0.5 %	36.7 %	39
509	Washington	January-57	54.4 %	0.6 %	1.1 %	1.9 %	1.3 %	40.7 %	63
510	California	September-91	59.5 %	1.3 %	0.4 %	1.9 %	0.6 %	36.3 %	48
512	Texas	January-47	68.6 %	2.5 %	0.6 %	1.9 %	0.6 %	25.9 %	48
513	Ohio	January-47	66.1 %	0.8 %	0.5 %	2.5 %	0.9 %	29.2 %	42
515	Iowa	January-47	53.4 %	1.7 %	0.7 %	2.7 %	3.2 %	38.3 %	69
516	New York	January-51	61.3 %	1.1 %	1.0 %	2.4 %	0.5 %	33.8 %	53
517	Michigan	January-47	43.0 %	0.6 %	0.2 %	1.4 %	0.3 %	54.5 %	57
518	New York	January-47	51.2 %	1.2 %	0.7 %	2.9 %	0.3 %	43.6 %	66
520	Arizona	March-95	60.0 %	1.2 %	0.4 %	2.8 %	3.5 %	32.1 %	54
530	California	November-97	42.9 %	1.4 %	0.2 %	1.8 %	0.5 %	53.2 %	62
531	Nebraska	March-11	47.4 %	0.8 %	0.4 %	2.7 %	0.1 %	48.5 %	34
534	Wisconsin	August-10	20.9 %	0.5 %	0.2 %	0.9 %	0.0 %	77.4 %	18
539	Oklahoma	April-11	28.7 %	1.3 %	0.1 %	3.3 %	0.0 %	66.5 %	29
540	Virginia	July-95	53.4 %	0.9 %	0.5 %	1.8 %	0.6 %	42.8 %	65
541	Oregon	November-95	47.8 %	1.1 %	1.9 %	1.8 %	1.6 %	45.8 %	62
551	New Jersey	December-01	66.9 %	2.2 %	1.6 %	3.7 %	0.7 %	24.9 %	35
559	California	November-98	55.1 %	1.4 %	0.3 %	2.2 %	0.8 %	40.2 %	47
561	Florida	May-96	57.1 %	9.8 %	0.7 %	2.3 %	1.2 %	28.9 %	50
562	California	January-97	59.5 %	0.8 %	0.7 %	1.8 %	0.6 %	36.5 %	48
563	Iowa	March-01	43.0 %	0.6 %	0.2 %	2.8 %	0.8 %	52.6 %	68
564	Washington	August-17	31.8 %	0.2 %	0.5 %	1.7 %	0.0 %	65.8 %	15
567	Ohio	January-02	36.5 %	1.8 %	0.6 %	2.3 %	0.2 %	58.6 %	49
570	Pennsylvania	December-98	52.2 %	1.0 %	0.3 %	1.8 %	0.5 %	44.2 %	61
571	Virginia	March-00	72.9 %	1.7 %	0.5 %	3.2 %	0.4 %	21.4 %	53
573	Missouri	January-96	37.1 %	1.1 %	0.6 %	2.2 %	0.5 %	58.6 %	55
574	Indiana	January-02	47.4 %	1.0 %	0.5 %	1.9 %	0.3 %	48.9 %	42
575	New Mexico	October-07	41.2 %	1.0 %	2.7 %	2.3 %	1.8 %	50.9 %	48
580	Oklahoma	November-97	25.6 %	2.5 %	0.2 %	1.4 %	0.3 %	69.9 %	53
585	New York	November-01	57.4 %	0.9 %	0.4 %	3.2 %	0.2 %	37.9 %	46
586	Michigan	September-01	62.9 %	0.7 %	0.3 %	1.6 %	0.2 %	34.3 %	35
601	Mississippi	January-47	41.3 %	6.4 %	0.3 %	1.8 %	0.9 %	49.3 %	44
602	Arizona	January-47	65.1 %	0.7 %	0.5 %	2.7 %	2.6 %	28.5 %	38
603	New Hampshire	January-47	47.7 %	0.9 %	1.0 %	1.4 %	0.2 %	48.8 %	50
605	South Dakota	January-47	32.3 %	0.2 %	0.3 %	1.3 %	0.8 %	65.0 %	82
606	Kentucky	January-55	32.5 %	1.3 %	0.4 %	1.8 %	0.5 %	63.5 %	49
607	New York	January-54	45.8 %	0.8 %	0.9 %	3.1 %	0.2 %	49.1 %	56
608	Wisconsin	January-55	45.3 %	1.2 %	0.5 %	1.4 %	0.5 %	51.1 %	84
609	New Jersey	January-57	57.4 %	1.0 %	0.6 %	2.2 %	0.3 %	38.5 %	49
610	Pennsylvania	January-94	57.2 %	1.0 %	0.3 %	1.6 %	0.3 %	39.6 %	55
612	Minnesota	January-47	72.5 %	0.9 %	0.4 %	2.3 %	1.4 %	22.6 %	48
614	Ohio	January-47	65.5 %	0.9 %	0.4 %	1.9 %	0.5 %	30.7 %	39
615	Tennessee	January-54	57.7 %	10.7 %	0.3 %	2.0 %	1.0 %	28.3 %	41
616	Michigan	January-47	56.0 %	1.0 %	0.3 %	1.9 %	0.4 %	40.5 %	45
617	Massachusetts	January-47	65.2 %	0.7 %	0.8 %	1.7 %	0.3 %	31.2 %	38
618	Illinois	January-47	34.4 %	0.5 %	0.5 %	1.6 %	0.4 %	62.6 %	59
619	California	January-82	63.3 %	1.2 %	0.4 %	1.9 %	0.7 %	32.6 %	45
620	Kansas	February-01	24.1 %	2.6 %	2.8 %	1.6 %	0.4 %	68.6 %	73
623	Arizona	March-99	67.7 %	0.6 %	0.7 %	2.7 %	7.9 %	20.4 %	32
626	California	June-97	61.5 %	1.4 %	0.5 %	2.1 %	0.8 %	33.8 %	47
628	California	March-15	63.0 %	3.8 %	0.5 %	3.5 %	0.1 %	29.2 %	34
629	Tennessee	March-15	62.6 %	3.5 %	0.6 %	3.4 %	0.0 %	29.9 %	30
630	Illinois	August-96	54.5 %	1.0 %	0.2 %	1.3 %	0.5 %	42.6 %	39
631	New York	November-99	55.7 %	1.1 %	0.5 %	2.9 %	0.4 %	39.4 %	51
636	Missouri	May-99	48.1 %	1.3 %	0.7 %	1.9 %	0.2 %	47.8 %	38
640	New Jersey	September-18	39.2 %	0.2 %	0.1 %	2.7 %	0.0 %	57.7 %	12

Table 6
Number Utilization by Area Code as of December 31, 2020

Area Code	State / Jurisdiction	Area Code Opened	Assigned	Intermediate	Reserved	Aging	Administrative	Available	OCNs
641	Iowa	July-00	23.1 %	1.7 %	1.1 %	3.0 %	0.5 %	70.6 %	73
646	New York	July-99	77.6 %	1.4 %	0.7 %	4.6 %	0.7 %	15.1 %	52
650	California	August-97	59.2 %	1.7 %	0.2 %	1.4 %	0.6 %	36.8 %	46
651	Minnesota	July-98	65.4 %	0.8 %	0.4 %	2.0 %	3.0 %	28.4 %	49
657	California	September-08	74.3 %	1.9 %	1.2 %	4.4 %	0.2 %	18.0 %	39
659	Alabama	November-19	25.8 %	0.1 %	0.3 %	0.4 %	0.0 %	73.4 %	18
660	Missouri	October-97	22.9 %	3.1 %	0.2 %	1.3 %	0.3 %	72.3 %	57
661	California	February-99	57.4 %	1.4 %	0.3 %	2.2 %	0.6 %	38.1 %	55
662	Mississippi	April-99	37.0 %	4.8 %	0.2 %	1.9 %	0.9 %	55.1 %	54
667	Maryland	March-12	51.9 %	1.4 %	0.4 %	2.5 %	1.3 %	42.5 %	41
669	California	November-12	68.0 %	4.9 %	0.6 %	3.6 %	0.3 %	22.7 %	38
670	Northern Marianas Islands	July-97	26.3 %	0.0 %	17.8 %	2.1 %	0.4 %	53.5 %	3
671	Guam	July-97	41.6 %	0.0 %	3.4 %	3.0 %	4.5 %	47.5 %	6
678	Georgia	January-98	70.4 %	7.5 %	0.3 %	2.4 %	0.5 %	18.9 %	38
680	New York	March-17	23.4 %	3.3 %	0.1 %	2.3 %	0.0 %	70.9 %	26
681	West Virginia	March-09	27.5 %	0.9 %	0.5 %	1.7 %	0.1 %	69.3 %	43
682	Texas	October-00	72.1 %	1.8 %	1.1 %	3.6 %	0.7 %	20.6 %	45
684	American Samoa	October-04	32.7 %	0.2 %	0.6 %	7.9 %	2.2 %	56.4 %	4
689	Florida	June-19	42.9 %	0.9 %	0.8 %	2.5 %	0.0 %	52.9 %	26
701	North Dakota	January-47	28.3 %	0.4 %	0.2 %	1.2 %	0.6 %	69.2 %	75
702	Nevada	January-47	71.6 %	0.8 %	1.4 %	2.3 %	0.7 %	23.0 %	46
703	Virginia	January-47	66.6 %	0.6 %	0.4 %	2.8 %	0.2 %	29.4 %	38
704	North Carolina	January-47	55.9 %	12.6 %	0.2 %	1.9 %	1.1 %	28.3 %	37
706	Georgia	May-92	53.0 %	6.4 %	0.3 %	2.4 %	0.9 %	37.1 %	61
707	California	January-59	49.7 %	1.4 %	0.3 %	2.0 %	0.8 %	45.7 %	52
708	Illinois	November-89	46.6 %	0.9 %	0.2 %	1.5 %	0.5 %	50.3 %	39
712	Iowa	January-47	24.5 %	0.6 %	0.3 %	2.4 %	0.7 %	71.6 %	113
713	Texas	January-47	57.3 %	2.2 %	0.3 %	1.3 %	0.7 %	38.1 %	42
714	California	January-51	60.4 %	0.7 %	0.5 %	1.3 %	1.6 %	35.5 %	46
715	Wisconsin	September-99	32.7 %	1.0 %	0.5 %	1.0 %	0.3 %	64.4 %	93
716	New York	January-47	55.1 %	1.2 %	0.5 %	3.2 %	0.3 %	39.8 %	52
717	Pennsylvania	January-47	66.4 %	0.7 %	0.5 %	2.0 %	0.4 %	30.1 %	51
718	New York	September-84	55.7 %	0.2 %	0.5 %	2.5 %	0.4 %	40.8 %	41
719	Colorado	March-88	56.5 %	0.8 %	0.6 %	3.7 %	2.5 %	35.9 %	63
720	Colorado	June-98	79.8 %	1.9 %	0.7 %	2.8 %	1.2 %	13.6 %	52
724	Pennsylvania	February-98	50.4 %	1.1 %	0.4 %	1.7 %	0.3 %	46.1 %	56
725	Nevada	June-14	63.0 %	3.7 %	1.1 %	5.6 %	0.1 %	26.5 %	30
726	Texas	October-17	66.4 %	6.1 %	0.4 %	2.1 %	0.7 %	24.4 %	20
727	Florida	July-98	61.4 %	0.8 %	0.9 %	1.8 %	0.3 %	34.7 %	39
731	Tennessee	February-01	38.4 %	4.2 %	0.2 %	1.7 %	0.7 %	54.8 %	43
732	New Jersey	June-97	59.0 %	1.2 %	0.5 %	1.8 %	0.2 %	37.3 %	48
734	Michigan	December-97	54.8 %	0.6 %	0.4 %	1.6 %	0.2 %	42.3 %	49
737	Texas	July-13	57.9 %	2.1 %	0.5 %	3.8 %	0.3 %	35.5 %	39
740	Ohio	December-97	40.8 %	1.1 %	0.3 %	2.1 %	0.3 %	55.4 %	47
743	North Carolina	May-16	34.0 %	3.5 %	0.3 %	3.6 %	0.0 %	58.6 %	21
747	California	May-09	60.6 %	3.0 %	0.4 %	5.8 %	0.2 %	30.0 %	33
754	Florida	August-01	73.2 %	5.1 %	0.4 %	4.1 %	0.4 %	16.7 %	38
757	Virginia	July-96	66.6 %	1.0 %	0.5 %	3.1 %	0.4 %	28.4 %	42
760	California	March-97	56.1 %	1.6 %	0.4 %	2.2 %	0.5 %	39.3 %	59
762	Georgia	May-06	39.1 %	3.0 %	0.2 %	2.5 %	0.2 %	55.0 %	42
763	Minnesota	February-00	58.6 %	6.8 %	0.5 %	2.3 %	2.9 %	28.9 %	51
765	Indiana	February-97	37.7 %	2.0 %	0.3 %	1.8 %	0.4 %	57.8 %	65
769	Mississippi	March-05	40.7 %	1.2 %	0.4 %	2.4 %	1.1 %	54.3 %	30
770	Georgia	August-95	50.2 %	19.0 %	0.2 %	1.4 %	0.6 %	28.7 %	39
772	Florida	February-02	52.5 %	7.7 %	0.2 %	2.4 %	1.8 %	35.4 %	43
773	Illinois	October-96	53.3 %	0.8 %	0.2 %	1.8 %	0.5 %	43.4 %	42
774	Massachusetts	May-01	49.3 %	1.5 %	0.4 %	2.9 %	0.3 %	45.6 %	37
775	Nevada	December-98	48.5 %	0.9 %	0.2 %	2.5 %	0.7 %	47.1 %	45
779	Illinois	March-07	41.2 %	1.7 %	1.1 %	3.0 %	0.1 %	52.9 %	43
781	Massachusetts	September-97	50.8 %	0.9 %	0.5 %	1.6 %	0.3 %	45.9 %	39

Table 6
Number Utilization by Area Code as of December 31, 2020

Area Code	State / Jurisdiction	Area Code Opened	Assigned	Intermediate	Reserved	Aging	Administrative	Available	OCNs
785	Kansas	July-97	28.4 %	1.9 %	1.1 %	1.4 %	1.0 %	66.2 %	71
786	Florida	March-98	72.8 %	3.8 %	0.8 %	3.7 %	0.6 %	18.3 %	50
787	Puerto Rico	March-96	65.1 %	0.7 %	0.5 %	2.0 %	0.3 %	31.4 %	16
801	Utah	January-47	68.3 %	0.4 %	0.3 %	1.7 %	3.1 %	26.2 %	29
802	Vermont	January-47	37.6 %	1.5 %	1.0 %	1.9 %	0.3 %	57.7 %	44
803	South Carolina	January-47	50.4 %	7.3 %	0.4 %	2.4 %	1.1 %	38.4 %	57
804	Virginia	June-73	62.7 %	0.9 %	0.6 %	3.9 %	0.3 %	31.6 %	44
805	California	January-57	55.4 %	1.4 %	1.0 %	2.2 %	0.6 %	39.4 %	56
806	Texas	January-57	33.0 %	1.6 %	2.7 %	1.6 %	0.8 %	60.3 %	46
808	Hawaii	January-57	62.4 %	0.1 %	0.4 %	1.9 %	3.1 %	32.0 %	24
810	Michigan	December-93	45.5 %	0.7 %	0.2 %	2.1 %	0.5 %	51.0 %	39
812	Indiana	January-47	41.7 %	1.1 %	0.5 %	1.6 %	0.5 %	54.6 %	62
813	Florida	January-53	64.7 %	1.0 %	1.0 %	1.8 %	0.3 %	31.2 %	52
814	Pennsylvania	January-47	52.2 %	0.7 %	0.3 %	2.2 %	0.4 %	44.2 %	59
815	Illinois	January-47	42.6 %	0.9 %	0.2 %	1.4 %	0.5 %	54.5 %	68
816	Missouri	January-47	53.7 %	2.3 %	0.4 %	2.2 %	0.5 %	40.9 %	50
817	Texas	January-53	57.0 %	1.8 %	0.3 %	1.5 %	0.7 %	38.7 %	52
818	California	January-84	58.1 %	1.0 %	0.3 %	1.7 %	0.5 %	38.5 %	44
820	California	June-18	39.2 %	0.1 %	0.0 %	3.4 %	0.0 %	57.2 %	17
828	North Carolina	March-98	47.6 %	5.6 %	0.4 %	2.0 %	1.1 %	43.2 %	46
830	Texas	July-97	37.8 %	1.4 %	0.2 %	2.3 %	0.3 %	58.0 %	50
831	California	July-98	50.5 %	2.0 %	0.2 %	2.2 %	1.0 %	44.1 %	44
832	Texas	January-99	79.1 %	1.3 %	0.5 %	3.0 %	0.7 %	15.5 %	49
838	New York	September-17	13.8 %	4.7 %	3.0 %	2.2 %	0.8 %	75.6 %	36
839	South Carolina	May-20	25.3 %	0.1 %	0.1 %	0.6 %	0.0 %	73.9 %	12
843	South Carolina	March-98	50.5 %	5.2 %	0.4 %	1.9 %	1.0 %	41.0 %	50
845	New York	June-00	48.4 %	1.2 %	0.5 %	3.2 %	0.4 %	46.2 %	65
847	Illinois	January-96	55.8 %	0.8 %	0.1 %	1.3 %	0.4 %	41.5 %	38
848	New Jersey	December-01	52.2 %	2.0 %	0.7 %	3.8 %	0.4 %	41.0 %	37
850	Florida	June-97	50.8 %	3.2 %	0.5 %	2.3 %	0.8 %	42.3 %	48
854	South Carolina	October-15	40.0 %	2.3 %	0.2 %	3.3 %	0.0 %	54.2 %	23
856	New Jersey	June-99	52.8 %	1.2 %	0.2 %	2.6 %	0.3 %	42.9 %	52
857	Massachusetts	May-01	65.2 %	1.9 %	0.5 %	2.5 %	0.5 %	29.4 %	47
858	California	June-99	60.4 %	1.5 %	0.4 %	1.8 %	1.0 %	34.9 %	39
859	Kentucky	April-00	53.1 %	2.0 %	0.3 %	2.4 %	0.4 %	41.7 %	45
860	Connecticut	August-95	53.4 %	1.0 %	0.3 %	1.6 %	0.3 %	43.4 %	33
862	New Jersey	December-01	62.8 %	2.0 %	0.9 %	3.3 %	0.7 %	30.4 %	51
863	Florida	September-99	53.5 %	1.0 %	0.9 %	2.9 %	0.5 %	41.3 %	43
864	South Carolina	December-95	50.4 %	8.1 %	0.4 %	2.3 %	0.8 %	37.9 %	44
865	Tennessee	November-99	55.1 %	10.1 %	0.5 %	2.3 %	1.1 %	30.9 %	42
870	Arkansas	April-97	31.4 %	1.4 %	0.3 %	1.4 %	0.3 %	65.3 %	50
872	Illinois	November-09	53.4 %	3.4 %	0.6 %	2.2 %	0.5 %	39.9 %	36
878	Pennsylvania	August-01	42.3 %	1.1 %	0.3 %	1.5 %	0.0 %	54.8 %	34
901	Tennessee	January-47	59.4 %	9.6 %	0.4 %	2.3 %	1.1 %	27.1 %	45
903	Texas	November-90	44.4 %	2.1 %	0.5 %	2.1 %	1.0 %	50.0 %	62
904	Florida	July-65	56.6 %	11.2 %	0.2 %	2.4 %	0.9 %	28.7 %	44
906	Michigan	March-61	20.4 %	0.3 %	0.3 %	0.7 %	0.1 %	78.1 %	32
907	Alaska	January-57	27.5 %	2.6 %	0.3 %	0.7 %	1.3 %	67.6 %	43
908	New Jersey	November-90	53.4 %	0.9 %	0.4 %	1.6 %	0.4 %	43.3 %	56
909	California	November-92	60.8 %	1.0 %	0.7 %	2.5 %	0.6 %	34.5 %	52
910	North Carolina	November-93	50.7 %	3.3 %	1.7 %	2.2 %	0.7 %	41.5 %	44
912	Georgia	January-54	47.8 %	4.2 %	0.8 %	2.3 %	1.2 %	43.6 %	55
913	Kansas	January-47	59.6 %	1.7 %	0.5 %	2.9 %	0.9 %	34.4 %	52
914	New York	January-47	57.1 %	1.0 %	0.5 %	2.7 %	0.8 %	37.8 %	56
915	Texas	January-47	68.2 %	1.5 %	0.3 %	2.2 %	1.0 %	26.8 %	36
916	California	January-47	64.2 %	1.0 %	0.4 %	1.7 %	0.7 %	32.0 %	46
917	New York	January-92	65.3 %	0.8 %	0.4 %	1.7 %	0.4 %	31.5 %	42
918	Oklahoma	January-53	44.5 %	2.9 %	0.2 %	1.8 %	0.5 %	50.1 %	60
919	North Carolina	January-54	59.9 %	8.0 %	0.7 %	1.6 %	0.8 %	29.0 %	37
920	Wisconsin	July-97	45.4 %	1.6 %	0.4 %	2.0 %	0.5 %	50.2 %	68
925	California	March-98	56.1 %	1.3 %	0.2 %	1.6 %	1.1 %	39.6 %	45
928	Arizona	June-01	47.5 %	1.3 %	0.2 %	2.7 %	3.0 %	45.2 %	57
929	New York	April-11	68.3 %	3.9 %	0.8 %	4.3 %	0.2 %	22.5 %	42
930	Indiana	March-15	33.3 %	0.9 %	0.4 %	2.0 %	0.5 %	62.8 %	17
931	Tennessee	September-97	39.2 %	4.2 %	0.3 %	1.9 %	0.5 %	53.9 %	45
934	New York	July-16	38.4 %	0.2 %	2.2 %	4.6 %	0.5 %	54.1 %	17
936	Texas	February-00	45.5 %	1.4 %	0.7 %	2.3 %	0.5 %	49.7 %	45
937	Ohio	September-96	49.5 %	0.9 %	0.4 %	2.0 %	0.4 %	46.9 %	52
938	Alabama	July-10	47.2 %	0.1 %	0.2 %	1.8 %	0.0 %	50.6 %	17
939	Puerto Rico	September-01	52.6 %	0.5 %	0.4 %	4.6 %	0.5 %	41.5 %	13

Table 6
Number Utilization by Area Code as of December 31, 2020

Area Code	State / Jurisdiction	Area Code Opened	Assigned	Intermediate	Reserved	Aging	Administrative	Available	OCNs
940	Texas	May-97	35.1 %	2.3 %	0.3 %	1.7 %	0.8 %	59.8 %	61
941	Florida	May-95	60.3 %	0.9 %	1.0 %	2.1 %	0.4 %	35.3 %	42
945	Texas	January-21	22.1 %	0.0 %	0.0 %	0.0 %	11.6 %	66.3 %	11
947	Michigan	September-02	50.4 %	0.5 %	2.1 %	2.0 %	0.1 %	44.9 %	20
949	California	April-98	64.4 %	1.8 %	0.5 %	1.9 %	0.7 %	30.6 %	48
951	California	July-04	65.7 %	1.1 %	0.5 %	2.3 %	0.5 %	29.8 %	46
952	Minnesota	February-00	60.1 %	0.4 %	0.4 %	1.3 %	2.1 %	35.6 %	45
954	Florida	September-95	55.2 %	11.3 %	1.0 %	2.1 %	1.3 %	29.1 %	45
956	Texas	July-97	56.4 %	2.1 %	0.2 %	2.8 %	0.8 %	37.8 %	42
959	Connecticut	August-14	37.5 %	1.0 %	1.9 %	3.8 %	0.2 %	55.6 %	23
970	Colorado	April-95	48.1 %	0.9 %	0.5 %	2.3 %	1.9 %	46.3 %	72
971	Oregon	October-00	65.4 %	1.9 %	0.5 %	3.1 %	0.3 %	28.8 %	42
972	Texas	September-96	55.0 %	1.6 %	0.5 %	1.3 %	0.5 %	41.2 %	51
973	New Jersey	June-97	58.4 %	1.0 %	0.5 %	1.5 %	0.3 %	38.3 %	58
978	Massachusetts	September-97	51.5 %	1.5 %	0.6 %	2.2 %	0.3 %	43.8 %	39
979	Texas	February-00	39.6 %	1.8 %	1.3 %	1.9 %	0.3 %	55.1 %	53
980	North Carolina	April-01	62.0 %	5.5 %	0.7 %	4.5 %	0.3 %	27.0 %	35
984	North Carolina	April-12	59.2 %	2.7 %	0.3 %	3.6 %	0.1 %	34.2 %	35
985	Louisiana	February-01	41.6 %	6.5 %	0.2 %	2.5 %	0.8 %	48.4 %	36

Source: Numbering Resource Utilization/Forecast Reports data filed with Somos, Inc as of December 31, 2020. Area code information is from Somos's website. Note: The Commission has found "that aggregated data (such as each carrier's NPA wide utilization rate and number of NXXs assigned)" are not confidential. Numbering Resource Optimization, Report and Order and Further Notice of Proposed Rulemaking, CC Docket No. 99-200, 15 FCC Rcd 7574, 7607-08, para. 79 (2000).

Table 7
Assigned, Aging, and Available Telephone Numbers by Area Code as of December 31, 2020
(in thousands except OCNs)

Area Code	State / Jurisdiction	Wireline (CLECs and ILECs)				Mobile Wireless				VoIP			
		Assigned	Aging	Available	OCNs	Assigned	Aging	Available	OCNs	Assigned	Aging	Available	OCNs
201	New Jersey	2,668	65	1,899	37	2,131	77	307	6	23	11	19	4
202	District Of Columbia	3,639	62	1,060	31	1,974	94	387	8	16	3	10	6
203	Connecticut	2,185	45	2,601	25	2,122	54	208	5	4	0	18	2
205	Alabama	1,985	91	1,691	35	2,094	79	464	9	14	9	47	7
206	Washington	2,584	49	1,294	31	2,198	74	198	9	10	1	9	6
207	Maine	1,647	83	2,984	44	1,531	50	470	8	13	2	36	4
208	Idaho	2,264	143	2,210	53	1,999	69	463	14	13	8	88	5
209	California	1,774	78	1,953	34	2,312	89	626	8	17	6	45	4
210	Texas	2,579	74	1,412	25	2,922	138	125	10	6	1	4	5
212	New York	5,216	172	2,188	28	92	5	0	4	1	0	0	1
213	California	1,765	55	1,080	35	1,409	78	316	7	46	10	48	6
214	Texas	2,293	45	1,652	36	2,880	96	90	6	3	0	0	1
215	Pennsylvania	3,003	78	2,081	33	1,829	73	113	7	6	0	2	3
216	Ohio	1,744	51	1,278	25	1,537	80	381	9	15	6	3	5
217	Illinois	1,361	92	4,133	45	1,440	47	476	9	8	1	82	3
218	Minnesota	1,184	61	3,317	60	844	29	574	8	20	0	75	3
219	Indiana	990	56	1,313	26	1,014	34	395	7	26	1	26	3
220	Ohio	45	6	79	7	13	1	26	3	24	1	10	3
223	Pennsylvania	165	21	247	14	37	4	93	8	32	2	85	6
224	Illinois	1,164	63	789	30	1,457	59	394	6	30	1	59	4
225	Louisiana	910	50	1,113	28	1,287	69	211	7	11	0	42	4
228	Mississippi	400	15	664	18	941	21	321	9	28	1	31	7
229	Georgia	699	51	1,396	27	1,005	54	588	8	32	0	73	4
231	Michigan	918	48	2,385	33	778	35	369	6	6	1	0	2
234	Ohio	552	43	655	26	502	26	364	9	23	7	50	6
239	Florida	1,209	74	743	15	1,224	50	259	9	28	1	65	6
240	Maryland	1,880	76	1,387	38	2,058	78	544	11	16	11	109	9
248	Michigan	2,473	49	2,139	31	2,029	61	430	6	1	0	0	2
251	Alabama	917	48	1,156	30	957	36	325	11	24	1	44	5
252	North Carolina	1,290	87	2,077	22	1,244	54	463	11	11	1	84	4
253	Washington	1,615	34	1,025	26	1,351	57	213	6	12	0	13	4
254	Texas	1,006	66	1,827	27	1,077	48	465	12	29	1	64	7
256	Alabama	1,461	75	1,914	32	1,849	64	754	10	22	1	113	6
260	Indiana	966	19	1,308	26	819	33	337	8	31	6	49	3
262	Wisconsin	1,547	79	1,768	28	1,240	40	279	9	34	6	46	6
267	Pennsylvania	2,046	108	1,346	36	2,664	136	493	8	107	6	152	7
269	Michigan	950	37	1,715	33	968	47	374	6	15	6	4	2
270	Kentucky	1,337	48	3,335	39	1,283	57	606	12	19	1	109	4
272	Pennsylvania	275	10	321	20	72	5	119	11	15	1	31	5
276	Virginia	628	37	1,267	30	494	19	239	12	28	0	54	3
279	California	100	8	66	8	70	9	39	6	28	2	19	7
281	Texas	2,514	62	2,419	36	1,763	74	160	7	7	1	7	4
301	Maryland	3,178	133	2,194	32	1,523	38	248	9	19	2	28	4
302	Delaware	2,136	176	1,361	24	1,229	54	217	6	19	18	23	3
303	Colorado	3,163	111	1,994	24	1,508	37	20	6	1	0	0	1
304	West Virginia	1,876	44	3,239	36	1,843	85	380	13	12	0	70	3
305	Florida	1,865	48	1,690	28	1,680	58	125	6	3	0	11	4
307	Wyoming	873	46	1,372	30	683	18	1,028	11	14	1	42	5
308	Nebraska	355	12	2,107	41	1,361	13	510	10	3	0	7	3
309	Illinois	1,205	52	3,454	48	1,400	37	419	11	12	9	106	6
310	California	2,558	30	2,302	33	2,130	51	199	5	0	0	1	1
312	Illinois	3,178	34	1,511	31	1,717	64	526	9	8	0	2	6
313	Michigan	1,893	47	1,568	29	2,014	100	682	7	3	0	5	4
314	Missouri	2,365	56	1,478	22	2,183	88	485	8	13	2	7	4
315	New York	2,074	141	2,258	40	1,666	46	251	6	10	1	271	4
316	Kansas	786	34	635	20	2,068	33	245	10	23	1	18	5
317	Indiana	2,378	53	2,057	34	2,249	87	274	7	8	0	4	1
318	Louisiana	1,248	72	2,331	29	1,579	84	681	8	8	0	8	4
319	Iowa	976	139	2,137	62	910	28	366	9	22	1	36	7
320	Minnesota	892	54	2,299	56	624	19	286	10	33	1	73	3
321	Florida	1,083	57	587	25	1,315	68	241	7	15	1	34	5
323	California	2,273	99	1,976	31	2,601	115	371	5	8	0	5	1
325	Texas	600	25	1,364	25	543	24	277	11	10	1	116	6
326	Ohio	10	0	45	5	0	0	12	2	25	0	24	3
330	Ohio	1,856	58	2,449	29	2,236	81	393	7	2	1	10	2

Table 7
Assigned, Aging, and Available Telephone Numbers by Area Code as of December 31, 2020
(in thousands except OCNs)

Area Code	State / Jurisdiction	Wireline (CLECs and ILECs)				Mobile Wireless				VoIP			
		Assigned	Aging	Available	OCNs	Assigned	Aging	Available	OCNs	Assigned	Aging	Available	OCNs
331	Illinois	406	20	251	27	389	23	213	7	25	8	28	3
332	New York	285	7	52	16	127	12	49	8	8	1	17	8
334	Alabama	1,151	51	2,208	43	1,356	50	960	10	20	1	49	4
336	North Carolina	1,690	66	2,119	37	2,213	84	376	7	13	8	4	3
337	Louisiana	846	41	1,800	27	1,283	74	679	8	12	0	6	3
339	Massachusetts	230	17	164	15	212	8	28	6	23	1	18	6
340	Virgin Islands	34	0	175	3	126	4	135	5	0	0	0	0
341	California	24	3	40	8	16	5	31	5	36	0	14	4
346	Texas	933	49	443	27	1,448	98	286	8	51	8	118	10
347	New York	2,053	77	576	32	3,994	172	631	9	1	0	0	1
351	Massachusetts	64	31	38	11	27	3	69	6	25	1	31	6
352	Florida	1,432	75	1,303	21	1,562	67	457	10	25	9	159	7
360	Washington	2,357	65	2,506	53	2,168	75	336	8	7	0	10	4
361	Texas	1,025	58	1,592	31	1,097	52	527	9	16	0	60	5
364	Kentucky	32	2	65	6	1	0	23	5	8	1	3	3
380	Ohio	146	8	95	13	53	3	60	5	15	1	14	7
385	Utah	885	61	297	20	1,148	70	193	8	28	7	35	7
386	Florida	738	45	770	23	887	40	243	9	25	1	94	5
401	Rhode Island	1,444	95	1,548	18	1,343	54	225	7	11	1	92	6
402	Nebraska	2,089	296	2,859	50	1,801	48	299	9	6	0	9	2
404	Georgia	1,693	50	993	26	2,935	89	279	8	1	0	1	2
405	Oklahoma	1,747	76	2,384	31	2,089	79	578	11	17	1	52	6
406	Montana	1,429	55	3,305	44	1,191	33	977	14	20	2	119	5
407	Florida	2,143	70	1,559	30	2,504	88	278	8	14	2	5	6
408	California	2,865	48	2,166	38	1,955	47	201	6	1	0	3	3
409	Texas	717	24	993	25	896	43	236	10	21	1	63	6
410	Maryland	3,204	104	2,345	32	1,393	52	159	7	10	0	31	4
412	Pennsylvania	2,391	58	1,812	32	1,886	59	415	8	13	0	51	6
413	Massachusetts	1,200	43	1,303	24	1,085	35	317	7	5	0	134	6
414	Wisconsin	1,653	42	985	22	1,339	71	212	9	11	1	1	4
415	California	2,920	58	2,192	36	1,905	64	109	7	0	0	3	2
417	Missouri	1,032	51	2,584	42	1,476	57	460	9	27	1	91	4
419	Ohio	1,490	44	3,238	54	1,675	61	412	7	17	0	42	3
423	Tennessee	1,384	88	1,926	37	1,731	70	604	11	18	1	76	6
424	California	1,224	72	540	35	746	56	321	6	29	1	57	6
425	Washington	2,263	42	1,316	25	1,553	47	177	6	17	3	14	4
430	Texas	179	16	537	20	83	5	174	9	30	1	154	5
432	Texas	493	33	1,008	21	688	29	180	8	26	0	52	5
434	Virginia	1,124	43	1,336	22	866	33	271	10	31	1	90	6
435	Utah	886	50	1,717	37	819	27	708	12	17	0	23	6
440	Ohio	1,723	72	2,017	33	1,808	57	818	6	11	1	30	4
442	California	321	45	393	30	417	35	346	9	45	1	143	7
443	Maryland	2,031	88	1,178	31	2,842	129	578	8	9	1	142	5
445	Pennsylvania	87	3	72	11	17	1	57	6	8	0	20	6
447	Illinois	0	0	0	1	0	0	0	0	0	0	0	0
448	Florida	0	0	10	1	0	0	0	0	0	0	0	0
458	Oregon	160	14	254	15	105	9	129	10	14	1	57	5
463	Indiana	196	8	172	14	92	5	78	6	27	7	14	5
469	Texas	2,409	110	1,251	43	2,788	126	310	9	28	1	103	9
470	Georgia	1,704	155	628	29	2,762	150	474	10	55	1	43	8
475	Connecticut	437	61	276	15	526	22	167	8	29	1	46	5
478	Georgia	630	28	795	24	852	44	337	10	18	1	24	3
479	Arkansas	885	54	1,610	25	1,170	43	471	7	2	6	7	2
480	Arizona	2,716	96	1,151	24	2,538	89	62	8	17	1	3	5
484	Pennsylvania	2,488	113	1,945	34	1,676	73	368	11	110	1	146	7
501	Arkansas	1,135	53	1,461	22	1,437	73	645	9	15	1	34	4
502	Kentucky	1,395	81	1,286	23	1,656	72	440	10	11	0	28	5
503	Oregon	2,755	100	2,249	43	2,092	59	52	7	3	0	3	2
504	Louisiana	1,148	40	1,100	22	1,618	91	352	7	16	8	5	4
505	New Mexico	1,765	109	1,082	25	1,746	84	314	12	18	7	30	4
507	Minnesota	1,166	45	3,949	74	990	29	459	8	24	1	104	4
508	Massachusetts	2,658	76	2,274	26	1,581	31	278	6	10	1	45	4
509	Washington	2,034	55	2,237	42	1,876	81	478	12	4	0	61	6
510	California	2,379	75	2,183	33	2,282	72	303	6	14	1	23	5
512	Texas	2,926	67	1,693	33	2,320	77	106	10	9	0	8	3

Table 7
Assigned, Aging, and Available Telephone Numbers by Area Code as of December 31, 2020
(in thousands except OCNs)

Area Code	State / Jurisdiction	Wireline (CLECs and ILECs)				Mobile Wireless				VoIP			
		Assigned	Aging	Available	OCNs	Assigned	Aging	Available	OCNs	Assigned	Aging	Available	OCNs
513	Ohio	2,395	99	1,641	25	2,489	89	210	10	11	1	29	5
515	Iowa	1,425	87	1,481	51	1,179	45	317	9	25	0	80	6
516	New York	2,175	111	1,519	36	2,187	60	480	7	28	1	56	6
517	Michigan	1,228	34	2,428	45	1,146	46	384	7	9	0	12	3
518	New York	1,993	168	2,452	49	1,635	47	385	8	147	1	156	5
520	Arizona	1,771	92	1,288	33	1,664	72	329	10	25	1	32	7
530	California	1,414	70	2,995	46	1,485	49	401	8	29	1	81	5
531	Nebraska	303	14	247	18	177	12	216	11	12	2	41	5
534	Wisconsin	41	2	203	11	0	0	24	5	20	1	0	2
539	Oklahoma	164	22	480	17	89	8	140	7	21	1	13	4
540	Virginia	1,984	69	2,440	43	1,962	56	605	11	14	9	81	8
541	Oregon	1,923	85	3,067	47	1,821	58	388	9	7	0	64	3
551	New Jersey	397	34	175	20	638	25	185	8	59	1	47	7
559	California	1,409	62	2,104	32	2,206	85	367	8	14	1	44	4
561	Florida	1,651	68	1,269	33	2,078	84	267	6	20	1	24	6
562	California	1,640	46	1,503	32	1,969	65	392	6	15	1	19	5
563	Iowa	555	83	1,634	53	1,011	18	268	9	27	1	37	5
564	Washington	29	0	47	9	8	0	31	4	2	2	2	2
567	Ohio	499	37	1,080	32	371	18	278	11	36	1	96	6
570	Pennsylvania	2,375	61	2,678	42	1,661	67	658	15	7	4	25	2
571	Virginia	1,479	65	516	36	1,610	61	316	8	27	11	61	7
573	Missouri	1,160	99	3,147	38	1,252	48	542	10	37	1	146	5
574	Indiana	783	30	1,267	29	838	33	421	9	32	1	16	3
575	New Mexico	749	54	1,460	34	758	30	377	9	17	1	49	4
580	Oklahoma	645	46	3,048	35	930	43	1,199	13	15	0	74	3
585	New York	1,779	136	1,796	29	1,394	40	227	9	13	0	77	6
586	Michigan	968	29	996	26	2,240	56	354	6	7	0	0	1
601	Mississippi	1,248	61	2,789	29	1,669	66	557	10	9	0	42	2
602	Arizona	2,482	68	1,249	22	2,187	125	256	6	17	1	6	7
603	New Hampshire	1,664	52	2,707	33	1,669	41	532	9	10	7	31	4
605	South Dakota	1,108	61	3,566	67	1,076	30	794	9	12	1	51	6
606	Kentucky	611	39	1,855	32	904	47	1,025	12	25	1	85	3
607	New York	1,033	96	1,571	37	817	24	208	9	7	7	175	8
608	Wisconsin	1,609	47	2,819	66	1,408	47	531	11	21	1	10	5
609	New Jersey	1,979	90	2,022	33	2,055	63	551	8	30	1	83	7
610	Pennsylvania	2,906	81	2,488	35	1,473	37	262	9	32	0	28	7
612	Minnesota	1,722	41	781	31	2,148	81	151	8	7	0	6	7
614	Ohio	2,710	57	1,472	25	2,282	84	533	9	11	6	7	3
615	Tennessee	1,925	71	1,542	30	2,243	74	243	6	10	1	15	2
616	Michigan	1,361	42	1,344	31	1,257	45	247	8	9	0	13	4
617	Massachusetts	3,180	98	1,962	25	1,679	31	341	6	20	1	20	4
618	Illinois	1,151	73	3,834	43	1,364	45	545	10	10	0	134	3
619	California	1,946	53	1,575	29	2,794	86	441	8	18	2	12	4
620	Kansas	814	71	3,382	58	616	22	716	11	32	1	58	3
623	Arizona	1,034	50	420	20	813	25	119	6	14	0	4	4
626	California	1,652	43	1,540	30	2,213	87	299	6	27	1	27	6
628	California	468	28	165	22	183	9	125	6	41	1	30	6
629	Tennessee	298	10	96	16	115	7	95	7	21	7	16	7
630	Illinois	2,423	55	2,030	30	1,792	42	1,031	5	10	0	6	2
631	New York	2,435	158	2,437	34	1,788	66	291	7	30	1	146	6
636	Missouri	1,101	43	1,446	24	683	23	250	6	11	1	51	5
640	New Jersey	34	3	63	5	8	1	18	5	15	0	3	2
641	Iowa	527	119	2,616	60	493	16	554	8	27	0	35	5
646	New York	2,938	243	672	39	2,970	103	476	7	6	1	6	5
650	California	2,482	53	2,060	31	1,410	37	179	6	22	2	28	5
651	Minnesota	1,857	60	1,015	37	1,084	28	128	6	16	1	11	4
657	California	580	91	269	25	1,748	50	277	6	39	1	33	7
659	Alabama	80	2	181	8	0	0	77	6	34	0	66	4
660	Missouri	389	31	2,718	43	564	23	387	11	47	1	51	3
661	California	1,391	49	1,676	35	1,813	68	326	9	25	8	42	6
662	Mississippi	1,108	74	2,329	39	1,204	48	1,051	9	26	0	88	4
667	Maryland	689	26	414	22	176	10	219	11	15	7	88	8
669	California	500	22	193	25	414	27	104	6	28	1	17	7
670	Northern Mariana Islands	17	2	120	1	72	5	62	2	0	0	0	0
671	Guam	102	5	331	3	247	20	68	3	0	0	0	0

Table 7

Assigned, Aging, and Available Telephone Numbers by Area Code as of December 31, 2020
(in thousands except OCNs)

Area Code	State / Jurisdiction	Wireline (CLECs and ILECs)				Mobile Wireless				VoIP			
		Assigned	Aging	Available	OCNs	Assigned	Aging	Available	OCNs	Assigned	Aging	Available	OCNs
678	Georgia	2,189	49	1,157	28	2,707	121	139	6	2	0	0	2
680	New York	68	8	163	13	26	2	93	7	14	1	71	6
681	West Virginia	407	20	1,266	24	253	21	369	13	43	3	134	6
682	Texas	776	38	352	30	1,140	58	137	8	30	1	32	5
684	American Samoa	12	14	64	1	46	1	37	3	0	0	0	0
689	Florida	94	7	88	11	79	5	102	8	26	0	54	7
701	North Dakota	990	56	3,685	58	936	26	1,028	11	29	1	76	6
702	Nevada	2,832	66	1,460	32	2,605	110	187	7	22	2	16	4
703	Virginia	3,314	177	1,898	26	1,652	31	166	7	10	1	8	3
704	North Carolina	1,497	45	1,367	27	2,209	78	260	6	5	0	3	2
706	Georgia	1,386	66	1,900	46	2,106	90	402	9	26	0	23	2
707	California	1,934	98	2,696	36	1,715	53	339	8	17	1	189	5
708	Illinois	1,741	59	2,162	28	1,720	52	1,115	6	21	0	19	3
712	Iowa	629	108	2,978	96	645	18	734	12	25	1	86	5
713	Texas	2,807	46	2,136	30	1,609	55	39	7	0	0	12	2
714	California	2,087	43	2,083	32	2,618	60	177	6	4	0	4	3
715	Wisconsin	1,174	32	3,419	79	1,243	45	1,329	10	3	1	10	3
716	New York	1,689	152	1,927	35	1,853	54	379	9	23	1	116	7
717	Pennsylvania	2,857	71	2,025	37	2,261	77	206	8	15	5	46	4
718	New York	3,259	152	3,080	31	1,011	36	46	7	2	0	0	3
719	Colorado	1,803	155	1,536	41	1,371	48	303	11	25	6	70	7
720	Colorado	2,748	78	765	30	2,964	124	164	10	31	1	34	10
724	Pennsylvania	2,313	79	3,173	44	1,557	51	216	7	19	0	107	3
725	Nevada	335	22	116	18	160	19	75	7	20	4	25	5
726	Texas	83	3	7	10	8	1	17	5	9	0	12	5
727	Florida	1,572	33	1,489	24	1,657	56	180	6	49	6	34	7
731	Tennessee	504	45	1,575	31	931	21	460	7	22	1	40	3
732	New Jersey	2,667	82	2,329	32	1,894	60	204	7	21	1	54	6
734	Michigan	1,756	48	2,083	37	1,751	52	483	7	8	5	5	3
737	Texas	580	34	205	22	357	23	187	7	34	8	203	10
740	Ohio	1,548	84	3,267	34	1,483	70	597	8	19	1	107	2
743	North Carolina	66	10	86	10	45	2	115	6	18	1	20	5
747	California	402	39	238	20	397	40	130	6	31	1	54	6
754	Florida	425	17	147	25	432	31	45	7	12	1	6	6
757	Virginia	2,598	152	1,484	23	2,284	69	440	8	14	9	108	8
760	California	2,075	104	2,324	41	2,214	62	396	8	9	0	44	5
762	Georgia	397	23	507	27	144	12	211	10	19	1	70	5
763	Minnesota	1,260	54	906	37	785	27	80	8	10	1	2	4
765	Indiana	1,211	66	2,914	51	1,205	52	581	8	18	1	94	4
769	Mississippi	196	13	296	15	190	9	209	10	17	1	32	5
770	Georgia	2,068	63	1,532	25	1,642	39	76	8	4	0	0	2
772	Florida	666	35	576	29	638	26	198	6	21	1	49	5
773	Illinois	1,744	49	2,123	30	2,352	90	963	6	7	0	5	4
774	Massachusetts	736	74	938	23	1,167	39	643	6	30	1	203	6
775	Nevada	1,593	96	2,067	29	919	34	322	10	21	1	50	4
779	Illinois	296	28	517	29	275	15	198	10	29	1	56	4
781	Massachusetts	2,237	86	2,786	25	1,379	29	394	6	32	1	99	5
785	Kansas	931	59	3,406	54	831	30	645	11	22	0	89	4
786	Florida	1,507	61	670	33	3,117	165	438	9	26	9	44	7
801	Utah	3,315	72	1,649	21	1,926	60	158	5	3	0	0	1
802	Vermont	1,227	76	2,627	29	688	22	164	8	11	0	106	3
803	South Carolina	1,479	80	2,030	41	2,103	91	535	8	14	1	21	4
804	Virginia	2,319	200	1,586	25	1,766	58	344	10	22	0	98	6
805	California	2,120	89	2,210	36	2,024	70	459	8	21	6	56	6
806	Texas	787	41	2,737	32	1,074	49	599	8	12	0	59	5
808	Hawaii	1,948	58	1,343	14	1,850	58	258	6	14	0	5	3
810	Michigan	965	47	1,595	28	1,019	44	464	7	5	0	1	2
812	Indiana	1,542	56	3,355	47	1,665	65	699	10	12	0	91	3
813	Florida	2,451	37	1,676	28	2,173	92	360	9	80	1	72	12
814	Pennsylvania	2,386	104	2,781	32	1,423	51	375	17	10	1	52	7
815	Illinois	1,714	68	3,673	52	1,592	37	354	10	10	0	85	4
816	Missouri	1,807	56	2,250	34	1,848	91	299	9	21	0	54	3
817	Texas	2,276	59	2,463	38	2,001	56	63	8	7	0	11	3
818	California	2,217	38	2,130	30	2,276	91	254	6	3	0	2	3
820	California	19	4	24	5	4	1	47	6	30	1	20	5

Table 7
Assigned, Aging, and Available Telephone Numbers by Area Code as of December 31, 2020
(in thousands except OCNs)

Area Code	State / Jurisdiction	Wireline (CLECs and ILECs)				Mobile Wireless				VoIP			
		Assigned	Aging	Available	OCNs	Assigned	Aging	Available	OCNs	Assigned	Aging	Available	OCNs
828	North Carolina	1,084	53	1,758	31	1,409	49	397	9	30	6	29	3
830	Texas	730	57	1,805	34	739	33	402	10	34	1	42	4
831	California	873	47	1,320	27	906	30	126	7	18	1	36	7
832	Texas	2,006	61	785	33	4,164	168	394	9	9	2	12	6
838	New York	68	6	272	21	13	1	59	7	4	6	106	7
839	South Carolina	10	1	66	4	1	0	31	4	25	0	9	4
840	California	0	0	0	1	0	0	0	0	0	0	0	0
843	South Carolina	1,604	55	2,310	37	2,012	82	493	7	11	2	23	3
845	New York	1,870	169	2,320	46	1,428	45	349	9	11	6	336	7
847	Illinois	2,939	52	2,475	29	1,406	50	481	6	3	0	1	1
848	New Jersey	357	32	324	24	433	22	210	7	22	6	103	6
850	Florida	1,867	97	2,261	26	1,813	73	591	11	20	0	70	6
854	South Carolina	118	8	91	10	19	2	108	7	27	4	25	6
856	New Jersey	1,736	103	1,813	34	1,123	39	264	9	43	1	91	6
857	Massachusetts	660	35	399	27	1,056	31	347	10	99	3	72	10
858	California	1,692	51	1,160	24	938	18	222	6	23	8	21	5
859	Kentucky	985	49	1,293	28	1,298	54	417	12	13	1	47	3
860	Connecticut	1,955	65	2,672	19	2,032	56	256	8	17	1	88	3
862	New Jersey	538	27	381	33	928	51	256	8	39	1	92	10
863	Florida	968	56	964	25	987	54	421	9	69	0	61	6
864	South Carolina	1,283	60	1,682	29	1,776	79	426	7	22	4	48	6
865	Tennessee	887	43	898	23	1,342	51	190	9	11	1	30	7
870	Arkansas	812	38	3,117	37	1,264	54	1,047	7	14	1	54	4
872	Illinois	505	19	236	22	242	12	306	6	18	1	29	8
878	Pennsylvania	202	7	261	21	79	3	106	8	27	1	33	5
901	Tennessee	1,329	50	880	26	1,824	73	247	9	16	1	6	7
903	Texas	1,257	70	2,595	42	1,737	69	559	11	19	1	44	5
904	Florida	1,656	68	1,240	26	2,021	83	296	10	27	8	65	6
906	Michigan	367	17	2,026	24	311	7	561	7	0	0	4	1
907	Alaska	888	13	2,985	29	856	27	1,300	13	0	1	1	1
908	New Jersey	1,724	53	2,134	38	1,762	50	490	7	32	1	110	8
909	California	2,023	88	1,596	34	2,641	102	510	7	16	1	85	6
910	North Carolina	1,573	78	2,182	28	1,845	71	525	10	22	1	63	4
912	Georgia	987	50	1,614	36	1,418	67	520	11	19	1	24	6
913	Kansas	1,459	56	1,327	36	1,354	78	180	8	18	6	16	5
914	New York	2,060	106	1,541	39	1,464	61	510	7	22	1	77	6
915	Texas	902	21	623	21	1,162	46	123	8	11	0	23	5
916	California	2,426	53	1,903	32	2,387	73	215	7	16	6	9	3
917	New York	1,218	34	332	26	3,609	88	346	8	5	1	4	4
918	Oklahoma	1,371	58	2,695	47	1,846	68	753	9	9	1	38	1
919	North Carolina	2,073	47	1,652	27	2,267	68	286	8	3	0	0	1
920	Wisconsin	1,547	81	2,514	47	1,533	55	701	13	24	1	20	5
925	California	1,826	58	1,779	29	1,381	35	288	6	17	1	44	6
928	Arizona	1,304	84	1,698	38	1,127	50	491	9	49	7	96	8
929	New York	1,028	48	391	24	1,648	119	433	9	41	5	69	8
930	Indiana	90	6	156	7	6	0	58	7	37	1	37	3
931	Tennessee	711	47	1,967	33	1,088	42	470	6	23	1	38	3
934	New York	39	6	63	6	18	2	28	7	15	1	11	4
936	Texas	682	41	1,169	27	745	32	284	9	25	1	109	6
937	Ohio	1,789	62	2,580	36	1,802	80	481	10	10	2	76	4
938	Alabama	85	3	90	8	14	0	17	4	24	1	7	4
940	Texas	706	40	1,766	41	683	27	514	10	25	0	72	6
941	Florida	1,215	38	976	25	1,007	41	193	7	73	1	45	7
945	Texas	7	0	11	4	0	0	30	3	12	0	16	4
947	Michigan	196	16	158	11	426	8	403	7	10	1	2	2
949	California	2,119	66	1,427	31	1,802	50	303	6	31	1	16	6
951	California	1,595	51	1,222	31	2,164	82	386	6	22	2	47	6
952	Minnesota	1,505	34	959	35	481	10	87	6	7	0	1	2
954	Florida	1,848	74	1,460	26	2,074	75	239	7	12	0	6	8
956	Texas	1,137	43	1,357	28	2,323	116	893	8	16	12	22	5
959	Connecticut	151	11	195	11	49	3	102	7	16	8	22	5
970	Colorado	1,865	108	2,401	50	1,439	48	602	13	17	1	116	5
971	Oregon	784	40	487	27	994	46	240	8	20	0	66	6
972	Texas	3,132	61	2,829	37	1,125	36	72	8	10	0	3	3
973	New Jersey	2,827	69	2,393	39	1,658	44	239	9	14	1	57	7

Table 7
Assigned, Aging, and Available Telephone Numbers by Area Code as of December 31, 2020
(in thousands except OCNs)

Area Code	State / Jurisdiction	Wireline (CLECs and ILECs)				Mobile Wireless				VoIP			
		Assigned	Aging	Available	OCNs	Assigned	Aging	Available	OCNs	Assigned	Aging	Available	OCNs
978	Massachusetts	2,162	122	2,702	26	1,573	39	319	6	32	1	148	4
979	Texas	604	29	1,183	33	721	31	318	10	29	6	72	7
980	North Carolina	859	78	440	22	824	38	271	8	21	6	29	5
984	North Carolina	526	30	270	21	269	13	162	9	29	8	45	5
985	Louisiana	708	46	1,338	25	872	50	418	5	18	1	40	4
986	Idaho	51	3	38	9	17	1	19	5	50	1	25	5
989	Michigan	1,126	50	3,287	37	1,240	47	643	8	1	0	17	3

Source: Numbering Resource Utilization/Forecast Reports data filed with Somos, Inc, Inc. as of December 31, 2020.

Note: The Commission has found "that aggregated data (such as each carrier's NPA wide utilization rate and number of NXXs assigned)" are not confidential. Numbering Resource Optimization, Report and Order and Further Notice of Proposed Rulemaking, CC Docket No. 99-200, 15 FCC Rcd 7574, 7607-08, para. 79 (2000).

Table 8
Pooled Thousands-blocks as of December 31, 2020

State / Jurisdiction	Wireline (ILECs and CLECs)			Mobile Wireless			VoIP		
	Pooled	Total ¹	Percent	Pooled	Total ¹	Percent	Pooled	Total ¹	Percent
Alabama	6,302	14,414	4372.1%	4,188	9,122	4591.1%	396	477	8301.9%
Alaska	145	1,507	962.2%	418	1,670	2503.0%	2	2	10000.0%
American Samoa	0	0	NM	0	0	NM	0	0	NM
Arizona	6,102	16,398	3721.2%	5,508	10,146	5428.7%	267	279	9569.9%
Arkansas	3,198	8,712	3670.8%	2,833	6,253	4530.6%	119	134	8880.6%
California	45,485	111,752	4070.2%	40,876	67,969	6013.9%	1,939	2,129	9107.6%
Colorado	6,442	17,147	3756.9%	4,384	8,507	5153.4%	294	303	9703.0%
Connecticut	4,299	11,090	3876.5%	3,211	5,653	5680.2%	239	250	9560.0%
Delaware	1,919	3,767	5094.2%	887	1,515	5854.8%	60	60	10000.0%
District of Columbia	1,499	4,884	3069.2%	1,699	2,491	6820.6%	29	29	10000.0%
Florida	22,687	51,000	4448.4%	18,477	33,791	5468.0%	1,318	1,487	8863.5%
Georgia	12,090	26,378	4583.4%	10,576	19,552	5409.2%	399	439	9088.8%
Guam	0	0	NM	0	0	NM	0	0	NM
Hawaii	703	3,523	1995.5%	1,128	2,194	5141.3%	19	19	10000.0%
Idaho	1,766	4,516	3910.5%	1,279	2,564	4988.3%	182	185	9837.8%
Illinois	18,933	46,890	4037.7%	12,370	25,125	4923.4%	757	831	9109.5%
Indiana	8,194	21,038	3894.9%	5,177	11,134	4649.7%	495	539	9183.7%
Iowa	4,717	12,383	3809.3%	3,317	6,809	4871.5%	351	402	8731.3%
Kansas	4,152	10,887	3813.7%	3,908	6,550	5966.4%	257	310	8290.3%
Kentucky	4,966	12,836	3868.8%	3,230	7,507	4302.7%	336	350	9600.0%
Louisiana	5,645	13,959	4044.0%	4,710	9,379	5021.9%	151	176	8579.5%
Maine	1,789	4,597	3891.7%	1,098	2,237	4908.4%	44	51	8627.5%
Maryland	8,548	19,579	4365.9%	5,959	10,218	5831.9%	473	489	9672.8%
Massachusetts	10,164	27,483	3698.3%	7,618	12,855	5926.1%	1,029	1,054	9762.8%
Michigan	13,472	36,570	3683.9%	11,174	21,256	5256.9%	125	152	8223.7%
Minnesota	6,850	21,006	3261.0%	4,230	9,136	4630.0%	362	392	9234.7%
Mississippi	3,591	9,795	3666.2%	2,486	5,730	4338.6%	249	275	9054.5%
Missouri	8,556	20,915	4090.8%	5,761	11,081	5199.0%	537	560	9589.3%
Montana	1,315	3,408	3858.6%	599	2,106	2844.3%	119	141	8439.7%
Nebraska	2,584	6,685	3865.4%	2,417	4,370	5530.9%	75	81	9259.3%
Nevada	3,212	8,568	3748.8%	2,713	4,454	6091.2%	151	160	9437.5%
New Hampshire	1,345	4,711	2855.0%	1,123	2,343	4793.0%	43	48	8958.3%
New Jersey	12,769	30,197	4228.6%	8,536	16,020	5328.3%	950	984	9654.5%
New Mexico	2,017	4,888	4126.4%	1,750	3,370	5192.9%	111	121	9173.6%
New York	27,292	63,268	4313.7%	21,653	34,422	6290.5%	1,871	2,118	8833.8%
North Carolina	11,026	25,730	4285.3%	7,731	15,939	4850.4%	419	459	9128.5%
Northern Mariana Islands	728	2,082	3496.6%	465	1,812	2566.2%	85	106	8018.9%
North Dakota	0	0	NM	0	0	NM	0	0	NM
Ohio	14,357	37,518	3826.7%	11,255	21,706	5185.2%	676	742	9110.5%
Oklahoma	4,670	10,854	4302.6%	4,216	7,703	5473.2%	241	241	10000.0%
Oregon	4,495	11,807	3807.1%	3,398	6,203	5478.0%	225	235	9574.5%
Pennsylvania	21,531	46,316	4648.7%	12,010	20,957	5730.8%	1,141	1,200	9508.3%
Puerto Rico	642	4,172	1538.8%	2,646	5,762	4592.2%	0	0	NM
Rhode Island	908	3,177	2858.0%	856	1,637	5229.1%	95	104	9134.6%
South Carolina	4,953	11,393	4347.4%	3,727	7,848	4749.0%	225	234	9615.4%
South Dakota	798	2,262	3527.9%	639	1,775	3600.0%	48	64	7500.0%
Tennessee	7,199	17,701	4067.0%	6,363	12,030	5289.3%	345	358	9636.9%
Texas	30,628	75,419	4061.0%	28,991	47,499	6103.5%	1,655	2,061	8030.1%
Utah	3,398	8,537	3980.3%	2,997	5,066	5915.9%	116	116	10000.0%
Vermont	1,480	3,791	3904.0%	503	890	5651.7%	100	117	8547.0%
Virgin Islands	0	0	NM	0	0	NM	0	0	NM
Virginia	11,060	24,992	4425.4%	7,222	13,482	5356.8%	627	679	9234.2%
Washington	5,679	20,081	2828.0%	6,125	11,235	5451.7%	159	167	9521.0%
West Virginia	2,860	6,524	4383.8%	1,647	3,243	5078.6%	211	262	8053.4%
Wisconsin	6,589	19,198	3432.1%	3,722	10,530	3534.7%	172	212	8113.2%
Wyoming	753	1,790	4206.7%	348	1,120	3107.1%	45	56	8035.7%
United States	396,502	988,095	4012.8%	310,154	573,966	5403.7%	20,334	22,440	9061.5%

Source: Pooling data provided by iconectiv, LLC

¹ Includes only those thousands-blocks in rate centers with pooling.

NM - Not meaningful.

Table 9
Increased Utilization and Telephone Numbers Saved due to Thousands-Block Pooling
as of December 31, 2020
(in thousands, except OCNs)

Carrier Type	OCNs	Numbers Assigned to End-Users ¹	Total Numbers ¹	Percent Utilized	Numbers Needed had Whole NXXs Been Issued	Utilization had Whole NXXs Been Issued	Increased Utilization Due to Pooling	Numbers Saved Due to Pooling
Competitive LEC	1,802	211,548	354,644	59.7%	1,058,930	20.0%	39.7%	704,286
Incumbent LEC	255	9,031	12,839	70.3%	27,270	33.1%	37.2%	14,431
Mobile Wireless	579	235,772	303,022	77.8%	399,000	59.1%	18.7%	95,978
VoIP	361	6,173	18,692	33.0%	152,700	4.0%	29.0%	134,008
Totals	2,997	462,525	689,197	67.1%	1,637,900	28.2%	38.9%	948,703

Source: Numbering Resource Utilization/Forecast Reports data filed with iconectiv, LLC as of December 31, 2020.

¹ Includes only those telephone numbers in pooled blocks on which carriers reported utilization data.

Note: Somos also provided data on thousands-block pooling.

Table 10
Number Utilization for Specialized Non-geographic Area Codes

Specialized Area Codes	Assigned	Intermediate	Reserved	Aging	Administrative	Available ¹	Total	Unique NXXs
	(Thousands of Telephone Numbers)							
500	7,075 81.4%	0 0.0%	80 0.9%	214 2.5%	1 0.0%	530 6.1%	8,690 100.0%	790
521	7,454 85.7%	26 0.3%	117 1.3%	251 2.9%	0 0.0%	62 0.7%	8,701 100.0%	791
522	7,291 83.8%	20 0.2%	281 3.2%	243 2.8%	0 0.0%	75 0.9%	8,701 100.0%	791
523	7,299 83.8%	0 0.0%	134 1.5%	248 2.8%	0 0.0%	239 2.7%	8,712 100.0%	792
524	7,199 82.7%	0 0.0%	97 1.1%	283 3.3%	3 0.0%	327 3.8%	8,701 100.0%	791
533	7,633 87.7%	0 0.0%	2 0.0%	167 1.9%	0 0.0%	108 1.2%	8,701 100.0%	791
544	7,577 87.1%	3 0.0%	0 0.0%	246 2.8%	0 0.0%	83 1.0%	8,701 100.0%	791
566	7,393 85.0%	16 0.2%	3 0.0%	359 4.1%	0 0.0%	139 1.6%	8,701 100.0%	791
577	6,921 79.5%	151 1.7%	4 0.1%	514 5.9%	0 0.0%	320 3.7%	8,701 100.0%	791
588	7,336 84.3%	90 1.0%	17 0.2%	368 4.2%	16 0.2%	84 1.0%	8,701 100.0%	791
900	87 46.0%	0 0.0%	1 0.3%	0 0.0%	1 0.4%	101 53.4%	190 100.0%	19

Source: Numbering Resource Utilization/Forecast Reports data filed with iconectiv, LLC as of December 31, 2020.

¹ Includes only those telephone numbers in blocks on which carriers reported utilization data.

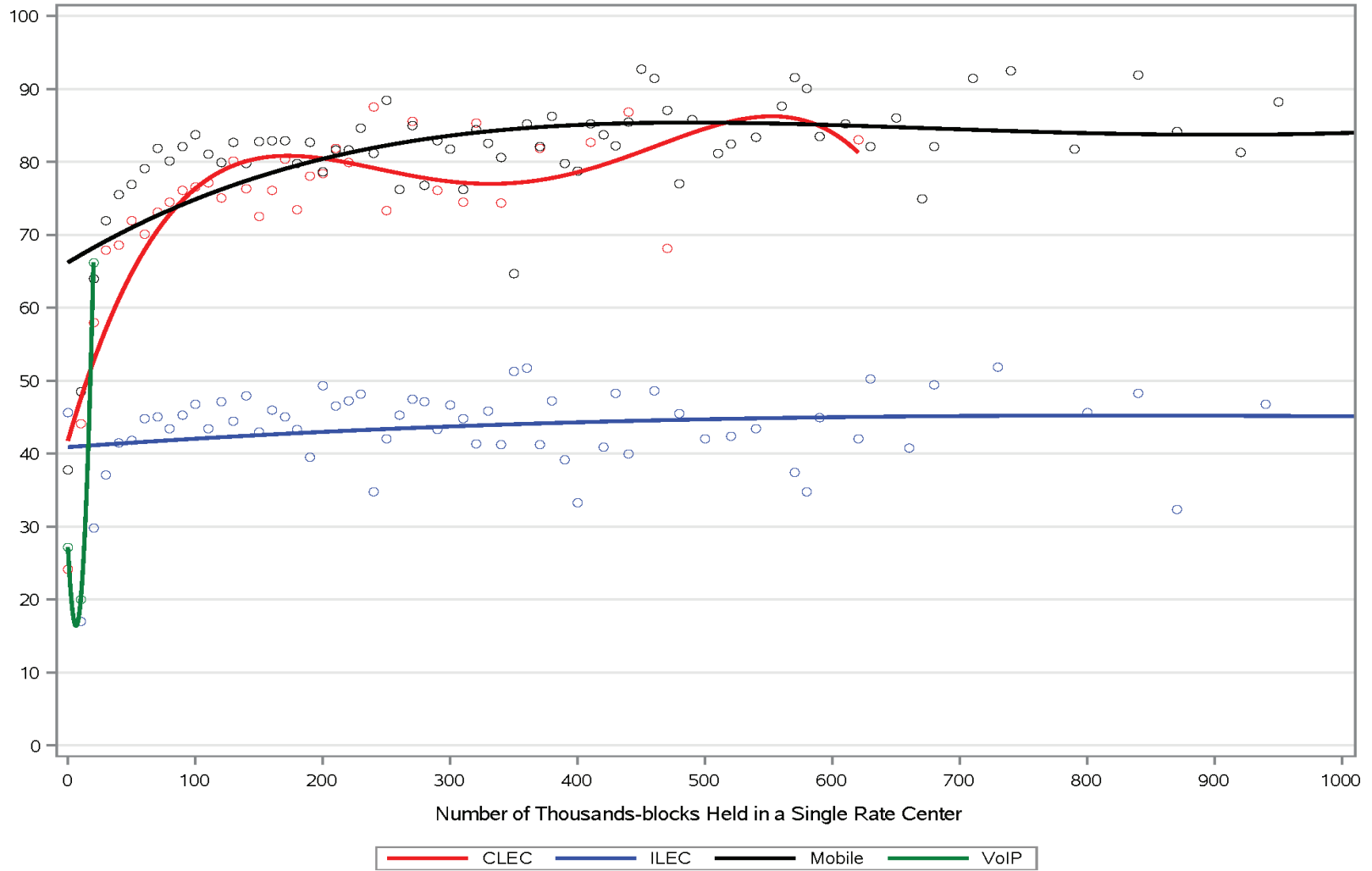
Table 11
Alternate Sources of NPA-NXX Assignments¹

NPA-NXXs that appear in	NRUF	NANPA	LERG	NXXs
All Three Databases				
NRUF, NANPA and LERG	✓	✓	✓	169,253
Two of the Three Databases				
NRUF and NANPA	✓	✓		1,577
NANPA and LERG		✓	✓	2,846
NRUF and LERG	✓		✓	552
Only One Database				
NRUF	✓			36
NANPA		✓		18,497
LERG			✓	440
Total NXXs in Database.	171,418	192,173	173,091	

Sources: NANPA's NPA-NXX assignments database as of December 31, 2020; LERG, as of December 31, 2020; NRUF, as of December 31, 2020 (filings as of December 31, 2020).

¹ Includes only telephone numbers in NXXs assigned to carriers and therefore available for assignment to customers. Does not include any numbers in NXXs that have not yet been assigned to carriers.

Chart 1
Average Utilization Rates by Number of Thousands-Blocks Held in a Rate Center, by Carrier Type



Note: Number of thousands-blocks has been rounded to the nearest ten.

Table 12
Number Utilization over
Time

Year	Half-Year	Competitive LEC	Incumbent LEC	Mobile Wireless	Paging	VoIP	Overall
2010	June	33.3 %	47.1 %	66.8 %	5.3 %	0.0 %	47.9 %
	December	35.2 %	45.3 %	66.9 %	5.0 %	0.0 %	47.6 %
2011	June	36.8 %	45.8 %	67.7 %	5.0 %	0.0 %	48.5 %
	December	38.6 %	45.3 %	67.7 %	5.2 %	0.0 %	49.0 %
2012	June	41.1 %	44.3 %	67.8 %	5.2 %	0.0 %	49.3 %
	December	41.7 %	44.1 %	69.0 %	5.2 %	0.0 %	49.8 %
2013	June	42.3 %	43.4 %	68.8 %	5.1 %	0.0 %	49.7 %
	December	42.0 %	43.4 %	69.7 %	5.0 %	4.3 %	49.9 %
2014	June	42.1 %	43.1 %	70.7 %	4.5 %	26.8 %	50.1 %
	December	43.3 %	42.5 %	70.8 %	4.3 %	20.6 %	50.3 %
2015	June	44.7 %	41.5 %	70.8 %	4.4 %	21.1 %	50.6 %
	December	45.0 %	41.7 %	72.4 %	4.5 %	24.0 %	51.4 %
2016	June	42.2 %	40.6 %	73.3 %	4.5 %	6.1 %	50.6 %
	December	43.5 %	40.1 %	74.1 %	4.5 %	3.3 %	50.9 %
2017	June	43.9 %	39.4 %	74.3 %	4.2 %	6.7 %	51.2 %
	December	43.7 %	39.1 %	75.1 %	4.4 %	6.0 %	51.3 %
2018	June	45.3 %	37.4 %	75.3 %	5.7 %	4.2 %	51.4 %
	December	46.5 %	38.1 %	76.1 %	4.6 %	7.0 %	52.2 %
2019	June	47.5 %	38.4 %	76.2 %	4.7 %	13.2 %	52.6 %
	December	46.0 %	37.5 %	76.8 %	4.6 %	19.8 %	52.2 %
2020	June	47.5 %	36.9 %	76.1 %	4.7 %	20.4 %	52.3 %
	December	51.1 %	37.3 %	75.9 %	4.8 %	28.9 %	53.8 %

Source: Numbering Resource Utilization/Forecast Reports filed with iconectiv, LLC as of December 31, 2020.

Note: Data from before 2010 can be found in the "Data as of December 31, 2019" edition of this report, which can be found at <https://www.fcc.gov/document/numbering-resource-utilization-nruf-us-dec-31-2019>.

Table 13
NPA-NXX Assignments, Returns, and Net Assignments

Year	Half-Year	Assignments	Returns	Net Assignments
2010	June	1,457	147	1,310
	December	1,338	163	1,175
2011	June	1,357	404	953
	December	1,535	216	1,319
2012	June	1,345	344	1,001
	December	1,292	228	1,064
2013	June	1,519	151	1,368
	December	1,193	133	1,060
2014	June	1,380	99	1,281
	December	2,034	160	1,874
2015	June	1,891	101	1,790
	December	1,837	132	1,705
2016	June	1,848	108	1,740
	December	1,557	113	1,444
2017	June	1,359	128	1,231
	December	1,354	83	1,271
2018	June	1,413	150	1,263
	December	1,433	129	1,304
2019	June	1,776	115	1,661
	December	1,657	190	1,467
2020	June	1,795	108	1,687
	December	3,101	192	2,909

Source: http://www.nanpa.com/reports/reports_cocodes_actStatus.html.

Note: Data from before 2010 can be found in the "Data as of December 31, 2019" edition of this report, which can be found at <https://www.fcc.gov/document/numbering-resource-utilization-nruf-us-dec-31-2019>.

Chart 2
NPA-NXX Assignments, Returns, and Net Assignments

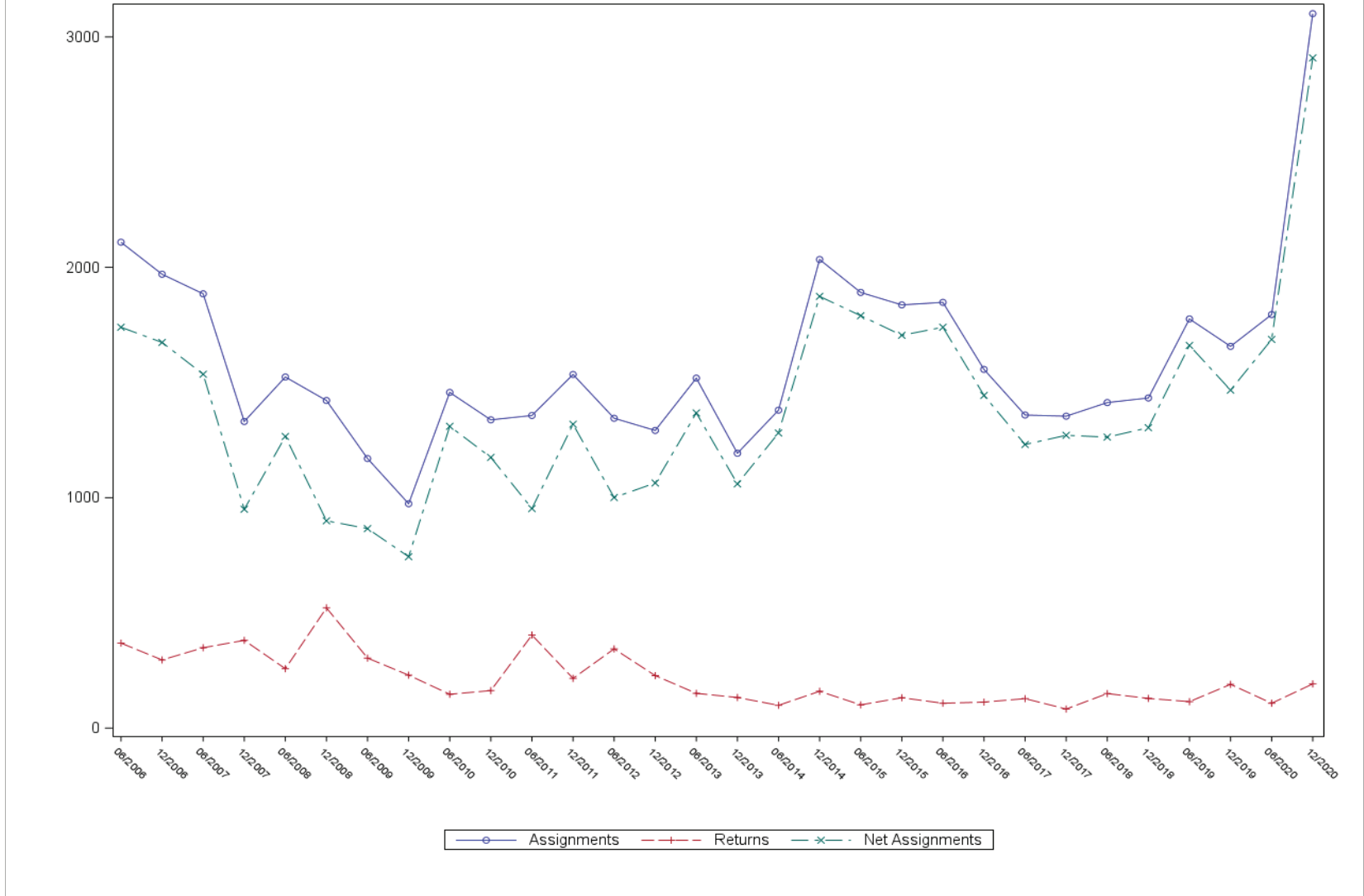


Table 14
Number Porting Activity Since Wireless Porting Started¹
(in thousands)

Year ³	Half-Year	Ported from Wireline to			Ported from Wireless to			Ported from VoIP to			Total
		Wireline	Wireless	VoIP	Wireline	Wireless ²	VoIP	Wireline	Wireless	VoIP	
2010	June	9,324	205	n/a	29	8,665	n/a	n/a	n/a	n/a	18,224
	December	11,241	214	n/a	68	10,696	n/a	n/a	n/a	n/a	22,220
2011	June	9,836	340	n/a	67	10,474	n/a	n/a	n/a	n/a	20,717
	December	8,895	368	n/a	84	9,765	n/a	n/a	n/a	n/a	19,112
2012	June	9,500	392	n/a	92	9,270	n/a	n/a	n/a	n/a	19,254
	December	11,067	462	n/a	135	10,222	n/a	n/a	n/a	n/a	21,887
2013	June	11,616	613	n/a	162	9,319	n/a	n/a	n/a	n/a	21,710
	December	14,221	637	*	217	10,441	*	*	*	0	25,634
2014	June	12,010	442	*	176	10,116	*	*	*	0	22,747
	December	12,966	353	0	158	12,214	0	2	0	0	28,811
2015	June	10,746	358	0	156	13,585	0	2	*	0	26,117
	December	12,175	370	*	133	13,085	*	1	*	0	25,403
2016	June	13,022	312	1,023	133	13,878	*	8	1	0	28,792
	December	16,164	303	218	170	13,038	*	23	3	*	30,139
2017	June	12,639	316	113	121	13,662	*	29	4	*	30,756
	December	10,587	309	892	112	12,111	*	33	5	*	27,955
2018	June	10,623	331	803	120	14,087	*	40	5	*	23,538
	December	10,410	553	980	116	12,463	1	59	6	*	32,092
2019	June	10,558	343	1,454	118	14,326	1	76	6	*	27,902
	December	9,165	292	1,332	99	10,423	2	197	8	1	30,966
2020	June	9,157	268	1,206	108	11,350	5	111	7	17	22,229
	December	8,451	241	856	97	10,510	59	100	11	30	20,356
Cumulative Total		373,023	12,718	10,709	4,649	327,812	59	682	57	48	729,066

Source: Raw data from Local Number Portability Administrator (iconectiv, LLC). Rollups performed by the Industry Analysis Division staff, Office of Economics and Analytics.

¹ These figures include numbers that were ported back to the original carrier, or where the subscriber with the ported number terminated

² Excludes significant porting activity between large wireless carriers after the closing of their mergers.

³ Figures in this report go back to 2010. For previous figures, see the last published report at <https://www.fcc.gov/document/numbering-resource-utilization-nruf-us-dec-31-2019>. Cumulative totals go back to 2003.

Note: Because this table focuses on counts of telephone numbers that are ported because of competitive reasons, we have excluded ports between certain unique pairs of service providers in certain limited number of instances. In each instance, the quantity of ports is so large that we believe that such ports are likely related to network migration or transactions between the companies resulting in the transfer of customers rather than competitive porting. We revised porting information back to June 2019 using our improved process.

* Indicates a number withheld to protect provider confidentiality.

Table 15
Numbers in the Porting Database¹ Over Time
(in thousands)

Year	Half-Year	Ported from Wireline to			Ported from Wireless to			Ported from VoIP to			Total
		Wireline	Wireless	VoIP	Wireline	Wireless ²	VoIP	Wireline	Wireless	VoIP	
2010	June	69,750	2,381	n/a	130	44,808	n/a	n/a	n/a	n/a	117,069
	December	74,750	2,376	n/a	172	48,584	n/a	n/a	n/a	n/a	125,882
2011	June	78,981	2,514	n/a	204	52,645	n/a	n/a	n/a	n/a	134,343
	December	82,799	2,649	n/a	218	53,992	n/a	n/a	n/a	n/a	139,657
2012	June	87,343	2,851	n/a	263	56,310	n/a	n/a	n/a	n/a	146,768
	December	92,919	3,117	n/a	335	59,373	n/a	n/a	n/a	n/a	155,743
2013	June	98,903	3,496	n/a	427	61,631	n/a	n/a	n/a	n/a	164,457
	December	104,093	3,768	*	517	63,911	*	*	*	0	172,405
2014	June	107,875	3,905	*	616	65,845	*	*	*	0	178,359
	December	111,818	6,316	*	803	62,793	*	*	*	*	181,848
2015	June	116,118	4,065	*	784	67,359	*	*	*	*	188,442
	December	119,994	4,125	*	841	71,117	*	*	*	*	196,191
2016	June	121,231	4,208	*	894	74,773	*	*	*	*	201,221
	December	125,357	4,224	*	945	78,029	*	*	*	*	209,691
2017	June	130,240	4,233	1,286	958	80,697	*	35	*	*	217,453
	December	135,006	4,265	2,348	1,006	83,382	*	60	*	*	226,074
2018	June	138,184	4,303	3,182	1,056	85,798	*	86	*	*	232,620
	December	137,664	4,349	3,916	1,094	88,938	*	115	13	*	236,090
2019	June	135,577	4,615	4,848	1,121	91,059	1	161	16	*	237,398
	December	135,867	4,637	6,262	1,151	93,999	2	206	19	1	242,144
2020	June	134,333	4,653	7,367	1,165	94,426	4	376	24	1	242,350
	December	133,971	4,636	8,333	1,190	94,857	9	447	28	19	243,490

Source: Raw data from Local Number Portability Administrator (iconectiv, LLC). Rollups performed by the Industry Analysis Division staff, Office of Economics and Analytics.

¹ The vast majority of these numbers are ported because customers changed carriers.

² Excludes significant porting activity between Sprint Wireless and T-Mobile following the closing of their merger in April 2020.

³ Starting with the July 2007 data, the method of determining whether a port came from a wireline or wireless carrier changed. For numbers that have been ported multiple times, the original carrier is now used to determine the porting carrier's type. Previously, the porting carrier's type was based on the most recent port. This was done to better estimate the number of phone numbers used in wireline and wireless service.

Note: Because this table focuses on counts of telephone numbers that are ported because of competitive reasons, we have excluded ports between certain unique pairs of service providers in certain limited number of instances. In each instance, the quantity of ports is so large that we believe that such ports are likely related to network migration or transactions between the companies resulting in the transfer of customers rather than competitive porting. We revised porting information back to June 2019 using our improved process.

* Indicates a number withheld to protect provider confidentiality.

Table 16
Numbers in the Porting Database¹ by Porting Date² as of December 31, 2020
(in thousands)

Year	Half-Year	Ported from Wireline to			Ported from Wireless to			Ported from VoIP to			Total
		Wireline	Wireless	VoIP	Wireline	Wireless ³	VoIP	Wireline	Wireless	VoIP	
2010	June	845	101	n/a	3	956	n/a	n/a	n/a	n/a	1,926
	December	1,115	114	n/a	8	1,114	n/a	n/a	n/a	n/a	2,371
2011	June	1,293	137	n/a	7	1,225	n/a	n/a	n/a	n/a	2,687
	December	1,381	136	n/a	16	1,164	n/a	n/a	n/a	n/a	2,726
2012	June	1,612	125	n/a	23	975	n/a	n/a	n/a	n/a	2,767
	December	2,051	167	n/a	27	1,430	n/a	n/a	n/a	n/a	3,716
2013	June	2,102	186	n/a	26	1,357	n/a	n/a	n/a	n/a	3,714
	December	2,763	204	74	27	1,653	*	51	2	*	4,777
2014	June	2,679	209	*	29	1,845	*	44	2	*	4,831
	December	3,175	242	*	38	2,378	*	50	3	*	5,928
2015	June	3,323	202	*	28	1,977	*	45	2	*	5,597
	December	3,303	230	*	32	2,411	*	49	2	*	6,035
2016	June	3,984	233	*	16	2,238	*	63	3	*	6,545
	December	4,802	230	758	21	2,721	*	58	3	16	8,617
2017	June	4,352	235	169	32	2,759	*	59	3	6	7,616
	December	4,984	275	893	37	3,232	7	68	3	13	9,476
2018	June	4,566	257	666	32	3,125	3	99	4	7	8,760
	December	5,111	321	605	35	3,913	3	360	4	8	10,362
2019	June	5,518	475	466	38	3,613	8	414	4	4	10,540
	December	5,948	385	848	43	4,668	2	466	5	310	12,674
2020	June	5,713	309	482	36	3,267	2	384	7	485	10,685
	December	6,148	404	345	44	4,607	17	307	6	666	12,543
Cumulative Total		133,971	4,636	8,333	1,190	94,857	9	447	28	19	243,490

Source: Raw data from Local Number Portability Administrator (iconectiv, LLC) as of December 31, 2020. Rollups performed by the Industry Analysis Division staff, Office of Economics and Analytics.

¹ The vast majority of these numbers are ported because customers changed carriers.

² The local number portability database was designed solely for the purpose of routing calls. As such, it retains only the most recent porting activity for any given number. So if a consumer ports a number from Carrier A to Carrier B, and later the consumer then ports the number from Carrier B to Carrier C, the database will not reflect the original port from Carrier A to Carrier B. Also, numbers that revert back to the original carrier (either because the customer ports the number back to the original carrier or because the customer discontinues service with that number) are dropped from the database. Lastly, area code splits can make a number appear to be ported later than it actually was. Starting with the July 2007 edition of this report, the methodology for determining whether a number was ported away from a wireline or a wireless carrier changed. Rather than relying on the carrier type of the most recent port, the numbers now reflect the original carrier type, based on the carrier that is assigned the thousands block of the donated number.

³ Because this table focuses on counts of telephone numbers that are ported because of competitive reasons, we have excluded ports between certain unique pairs of service providers in certain limited number of instances. In each instance, the quantity of ports is so large that we believe that such ports are likely related to network migration or transactions between the companies resulting in the transfer of customers rather than competitive porting.

Table 17
Numbers Ported¹ from Wireline Carriers by State and Recipient Carrier Type
(Numbers Ported in thousands)

State / Jurisdiction	Wireline to Wireline			Wireline to Wireless			Wireline to VoIP		
	Carriers Porting	Carriers Receiving	Numbers Ported	Carriers Porting	Carriers Receiving	Numbers Ported	Carriers Porting	Carriers Receiving	Numbers Ported
Alabama	67	53	1,482	68	9	92	41	7	43
Alaska	13	10	180	15	6	17	1-3	1-3	*
American Samoa	0	0	0	0	0	0	0	0	0
Arizona	41	39	2,799	39	10	86	36	7	101
Arkansas	42	29	819	39	8	118	26	5	24
California	78	61	17,048	77	10	531	68	9	1,371
Colorado	49	45	2,577	55	13	94	34	9	108
Connecticut	30	39	1,820	26	7	280	27	6	65
Delaware	28	37	647	24	7	10	24	9	41
District of Columbia	31	36	910	26	6	18	31	8	45
Florida	79	70	7,600	63	11	557	61	13	475
Georgia	86	81	4,089	86	9	190	62	9	248
Guam	4	4	15	1-3	1-3	*	0	0	0
Hawaii	11	13	423	11	4	11	10	1-3	*
Idaho	41	39	416	38	9	44	27	5	19
Illinois	87	75	6,585	87	8	214	49	10	320
Indiana	83	72	2,066	74	7	120	56	8	77
Iowa	137	111	841	156	8	45	39	6	83
Kansas	66	60	1,359	73	16	327	30	5	33
Kentucky	61	57	1,456	54	12	161	39	8	35
Louisiana	47	46	1,646	41	10	60	36	6	42
Maine	44	40	444	43	6	25	28	5	57
Maryland	55	50	2,582	44	10	95	46	9	192
Massachusetts	45	42	5,004	38	8	138	33	11	475
Michigan	90	71	4,338	87	7	199	48	8	155
Minnesota	117	87	2,579	123	8	497	60	5	76
Mississippi	45	40	685	39	9	67	30	8	27
Missouri	63	54	2,350	64	11	268	42	5	184
Montana	32	28	296	31	7	25	19	4	9
Nebraska	55	49	705	66	8	50	23	5	11
Nevada	38	35	1,173	33	8	26	34	5	52
New Hampshire	36	28	566	30	6	21	28	4	100
New Jersey	57	51	4,068	43	9	150	44	9	374
New Mexico	38	36	470	35	9	31	20	4	20
New York	110	97	10,314	105	11	391	75	11	588
North Carolina	70	67	3,726	66	9	170	48	6	126
North Dakota	36	31	132	41	9	25	21	5	12
Northern Mariana Islands	1-3	1-3	*	1-3	1-3	*	0	0	0
Ohio	92	79	4,605	89	7	306	57	9	172
Oklahoma	50	43	1,469	54	16	66	31	5	36
Oregon	61	58	1,271	54	7	80	36	6	46
Pennsylvania	97	77	5,593	89	13	302	73	9	554
Puerto Rico	0	0	0	0	0	0	0	0	0
Rhode Island	19	22	692	17	5	11	15	4	15
South Carolina	63	60	1,335	58	6	81	42	6	47
South Dakota	39	34	171	45	8	18	18	5	6
Tennessee	73	67	2,480	69	8	105	51	8	63
Texas	114	97	11,387	129	17	1,131	85	12	683
Utah	32	30	1,248	33	11	57	23	7	55
Vermont	27	22	235	22	6	10	18	4	45
Virgin Islands	1-3	1-3	*	1-3	4	*	0	0	0
Virginia	73	62	3,863	60	10	151	53	9	160
Washington	59	49	2,666	55	7	108	52	8	96
West Virginia	34	36	420	24	8	17	21	6	20
Wisconsin	111	68	2,202	131	11	153	58	7	60
Wyoming	24	22	166	25	10	11	9	1-3	*
United States	2,709	1,155	134,014	2,657	78	7,762	1,764	22	7,664

Source: Raw data from Local Number Portability Administrator (iconectiv, LLC) as of December 31, 2020. Rollups performed by the Industry Analysis Division staff, Office of Economics and Analytics.

¹ For numbers ported multiple times, the original carrier is used to determine the porting carrier's type.

² Because this table focuses on counts of telephone numbers that are ported because of competitive reasons, we have excluded ports between certain unique pairs of service providers in certain limited number of instances. In each instance, the quantity of ports is so large that we believe that such ports are likely related to network migration or transactions between the companies resulting in the transfer of customers rather than competitive porting.

* Indicates that the number has been withheld to protect carrier confidentiality.

** Indicates a number between 1 and 499.

Table 18
Numbers Ported¹ from Wireless Carriers by State and Recipient Carrier Type
(Numbers Ported in thousands)

State / Jurisdiction	Wireless to Wireline			Wireless to Wireless			Wireless to VoIP		
	Carriers Porting	Carriers Receiving	Numbers Ported	Carriers Porting	Carriers Receiving	Numbers Ported	Carriers Porting	Carriers Receiving	Numbers Ported
Alabama	9	38	10	9	9	1,262	7	5	**
Alaska	6	12	1	8	8	151	1-3	1-3	*
American Samoa	0	0	0	0	0	0	0	0	0
Arizona	6	32	15	8	8	1,930	5	1-3	*
Arkansas	6	21	4	7	6	574	5	1-3	*
California	10	53	183	11	10	12,676	10	6	8
Colorado	10	34	19	12	12	1,783	7	5	**
Connecticut	5	22	7	5	6	809	4	1-3	*
Delaware	5	24	2	5	6	237	5	1-3	*
District of Columbia	6	25	7	6	7	396	6	4	**
Florida	13	50	52	14	11	6,823	12	6	5
Georgia	11	51	35	10	9	3,045	9	7	2
Guam	1-3	1-3	*	5	5	48	0	0	0
Hawaii	4	12	1	5	4	446	4	1-3	*
Idaho	8	27	4	10	11	429	6	1-3	*
Illinois	10	56	31	11	9	4,466	7	6	2
Indiana	9	51	17	11	8	1,648	8	1-3	*
Iowa	9	46	11	9	9	817	5	1-3	*
Kansas	10	46	8	11	14	701	5	1-3	*
Kentucky	16	33	6	16	12	993	10	4	**
Louisiana	7	35	9	9	9	1,149	6	1-3	*
Maine	6	23	3	6	7	347	5	1-3	*
Maryland	10	41	18	10	9	1,782	9	5	**
Massachusetts	7	32	25	6	8	2,085	6	6	7
Michigan	8	52	34	9	8	3,109	5	6	1
Minnesota	5	50	13	5	8	1,279	1-3	1-3	*
Mississippi	8	28	4	11	9	740	7	5	**
Missouri	10	36	15	10	10	1,523	7	4	**
Montana	6	22	1	10	8	207	1-3	1-3	*
Nebraska	8	28	4	9	10	399	1-3	1-3	*
Nevada	10	27	8	9	8	874	7	4	**
New Hampshire	6	21	4	6	7	350	5	1-3	*
New Jersey	9	38	28	7	8	2,765	8	5	4
New Mexico	10	30	5	12	8	586	6	1-3	*
New York	8	68	81	10	10	6,749	6	6	4
North Carolina	11	48	28	12	9	2,615	7	1-3	*
North Dakota	4	21	1	7	9	153	1-3	1-3	*
Northern Mariana Islands	1-3	1-3	*	1-3	4	*	0	0	0
Ohio	8	55	35	10	7	3,104	6	5	**
Oklahoma	9	31	9	17	14	997	6	1-3	*
Oregon	6	42	15	8	8	1,236	6	4	**
Pennsylvania	16	48	36	17	12	3,536	10	5	2
Puerto Rico	0	0	0	0	0	0	0	0	0
Rhode Island	5	18	3	5	6	344	4	1-3	*
South Carolina	7	45	10	7	7	1,197	6	1-3	*
South Dakota	1-3	18	*	5	8	224	1-3	1-3	*
Tennessee	10	50	14	11	8	1,801	8	1-3	*
Texas	17	68	62	17	16	8,407	10	6	16
Utah	6	29	11	9	11	942	4	1-3	*
Vermont	5	12	2	6	7	121	1-3	1-3	*
Virgin Islands	1-3	1-3	*	1-3	4	*	0	0	0
Virginia	12	45	27	12	9	2,355	8	4	1
Washington	10	37	29	9	8	2,292	8	6	1
West Virginia	9	22	2	12	7	375	5	1-3	*
Wisconsin	12	46	18	11	10	1,713	8	1-3	*
Wyoming	6	17	1	9	10	101	1-3	1-3	*
United States	172	681	968	195	86	94,708	115	11	61

Source: Raw data from Local Number Portability Administrator (iconectiv, LLC) as of December 31, 2020. Rollups performed by the Industry Analysis Division staff, Office of Economics and Analytics.

¹ For numbers ported multiple times, the original carrier is used to determine the porting carrier's type.

² Because this table focuses on counts of telephone numbers that are ported because of competitive reasons, we have excluded ports between certain unique pairs of service providers in certain limited number of instances. In each instance, the quantity of ports is so large that we believe that such ports are likely related to network migration or transactions between the companies resulting in the transfer of customers rather than competitive porting.

* Indicates that the number has been withheld to protect carrier confidentiality.

** Indicates a number between 1 and 499.

Table 19
Numbers Ported¹ from VoIP Carriers by State and Recipient Carrier Type
(Numbers Ported in thousands)

State / Jurisdiction	VoIP to Wireline			VoIP to Wireless			VoIP to VoIP		
	Carriers Porting	Carriers Receiving	Numbers Ported	Carriers Porting	Carriers Receiving	Numbers Ported	Carriers Porting	Carriers Receiving	Numbers Ported
Alabama	5	24	11	1-3	7	*	4	1-3	*
Alaska	1-3	1-3	*	0	0	0	0	0	0
American Samoa	0	0	0	0	0	0	0	0	0
Arizona	5	8	**	1-3	6	*	1-3	1-3	*
Arkansas	4	12	**	1-3	4	*	1-3	1-3	*
California	11	31	8	9	8	1	7	4	11
Colorado	5	6	**	1-3	7	**	4	5	28
Connecticut	1-3	10	*	4	5	**	0	0	0
Delaware	1-3	8	*	1-3	1-3	*	1-3	1-3	*
District of Columbia	4	6	**	1-3	4	*	1-3	1-3	*
Florida	7	22	2	8	7	1	6	5	215
Georgia	5	14	**	5	6	**	1-3	4	*
Guam	0	0	0	0	0	0	0	0	0
Hawaii	1-3	1-3	*	1-3	1-3	*	0	0	0
Idaho	1-3	9	*	1-3	4	*	0	0	0
Illinois	8	39	14	7	8	1	5	4	**
Indiana	5	23	35	4	5	**	1-3	1-3	*
Iowa	1-3	8	*	1-3	4	*	0	0	0
Kansas	4	21	4	1-3	9	*	1-3	1-3	*
Kentucky	5	6	**	1-3	7	*	1-3	1-3	*
Louisiana	4	20	2	1-3	6	*	1-3	1-3	*
Maine	1-3	12	*	1-3	5	*	1-3	1-3	*
Maryland	5	24	45	4	7	**	1-3	5	*
Massachusetts	4	19	1	1-3	7	*	1-3	4	*
Michigan	4	11	5	1-3	4	*	0	0	0
Minnesota	1-3	18	*	1-3	5	*	1-3	1-3	*
Mississippi	1-3	11	*	1-3	5	*	0	0	0
Missouri	1-3	21	*	1-3	9	*	1-3	1-3	*
Montana	1-3	4	*	1-3	5	*	0	0	0
Nebraska	1-3	1-3	*	1-3	1-3	*	0	0	0
Nevada	5	6	**	1-3	1-3	*	1-3	1-3	*
New Hampshire	1-3	9	*	1-3	1-3	*	1-3	1-3	*
New Jersey	5	19	**	1-3	6	*	4	4	123
New Mexico	1-3	20	*	1-3	7	*	1-3	1-3	*
New York	8	33	2	5	9	**	6	7	51
North Carolina	4	10	2	6	7	**	1-3	1-3	*
North Dakota	1-3	1-3	*	1-3	1-3	*	1-3	1-3	*
Northern Mariana Islands	0	0	0	0	0	0	0	0	0
Ohio	6	20	3	5	6	**	1-3	1-3	*
Oklahoma	5	22	2	4	9	**	1-3	1-3	*
Oregon	1-3	9	*	5	4	**	1-3	1-3	*
Pennsylvania	6	28	11	4	7	**	4	4	107
Puerto Rico	0	0	0	0	0	0	0	0	0
Rhode Island	1-3	1-3	*	1-3	4	*	1-3	1-3	*
South Carolina	1-3	12	*	1-3	5	*	1-3	1-3	*
South Dakota	1-3	1-3	*	1-3	4	*	0	0	0
Tennessee	6	23	1	5	7	**	1-3	1-3	*
Texas	7	28	6	7	7	1	6	5	2
Utah	4	6	**	1-3	1-3	*	1-3	1-3	*
Vermont	1-3	1-3	*	1-3	1-3	*	1-3	1-3	*
Virgin Islands	0	0	0	0	0	0	0	0	0
Virginia	5	25	2	4	8	**	4	1-3	*
Washington	4	14	1	1-3	6	*	4	4	13
West Virginia	1-3	18	*	1-3	6	*	1-3	1-3	*
Wisconsin	4	18	1	4	8	**	1-3	1-3	*
Wyoming	1-3	4	*	1-3	1-3	*	1-3	1-3	*
United States	20	208	169	19	27	11	17	12	636

Source: Raw data from Local Number Portability Administrator (iconectiv, LLC) as of December 31, 2020. Rollups performed by the Industry Analysis Division staff, Office of Economics and Analytics.

¹ For numbers ported multiple times, the original carrier is used to determine the porting carrier's type.

² Because this table focuses on counts of telephone numbers that are ported because of competitive reasons, we have excluded ports between certain unique pairs of service providers in certain limited number of instances. In each instance, the quantity of ports is so large that we believe that such ports are likely related to network migration or transactions between the companies resulting in the transfer of customers rather than competitive porting.

* Indicates that the number has been withheld to protect carrier confidentiality.

** Indicates a number between 1 and 499.

Table 20
Percentage of Assigned Numbers in the Porting as of December 31, 2020
(Ported, Assigned in Thousands)

State / Jurisdiction	Wireline			Wireless			VoIP			Total		
	Ported	Assigned	Percent	Ported	Assigned	Percent	Ported	Assigned	Percent	Ported	Assigned	Percent
Alabama	1,925	5,679	33.9 %	1,273	6,271	20.3 %	12	138	8.8 %	3,211	12,088	26.6 %
Alaska	201	888	22.6 %	152	856	17.8 %	**	**	0.4 %	353	1,744	20.2 %
American Samoa	0	12	0.0 %	0	46	0.0 %	0	0	0.0 %	0	59	0.0 %
Arizona	3,719	9,307	40.0 %	1,948	8,329	23.4 %	2	122	2.0 %	5,670	17,758	31.9 %
Arkansas	1,056	2,832	37.3 %	579	3,872	15.0 %	1	32	2.0 %	1,636	6,735	24.3 %
California	24,228	55,093	44.0 %	12,880	55,548	23.2 %	22	740	3.0 %	37,130	111,381	33.3 %
Colorado	3,840	9,579	40.1 %	1,805	7,282	24.8 %	28	73	38.0 %	5,672	16,935	33.5 %
Connecticut	2,427	4,727	51.3 %	816	4,729	17.3 %	1	67	0.9 %	3,244	9,522	34.1 %
Delaware	935	2,136	43.7 %	240	1,229	19.5 %	**	19	0.4 %	1,175	3,385	34.7 %
District Of Columbia	1,090	3,639	30.0 %	405	1,974	20.5 %	**	16	1.5 %	1,495	5,629	26.6 %
Florida	10,362	24,389	42.5 %	6,884	27,246	25.3 %	218	544	40.1 %	17,465	52,180	33.5 %
Georgia	5,542	11,753	47.2 %	3,083	15,571	19.8 %	1	175	0.3 %	8,626	27,499	31.4 %
Guam	15	102	14.4 %	48	247	19.5 %	0	0	0.0 %	63	349	18.0 %
Hawaii	497	1,948	25.5 %	448	1,850	24.2 %	**	14	0.0 %	945	3,812	24.8 %
Idaho	1,083	2,315	46.8 %	435	2,015	21.6 %	**	64	0.5 %	1,518	4,394	34.5 %
Illinois	8,787	19,826	44.3 %	4,503	17,145	26.3 %	15	193	8.0 %	13,306	37,164	35.8 %
Indiana	2,637	8,156	32.3 %	1,665	7,888	21.1 %	36	190	18.8 %	4,338	16,234	26.7 %
Iowa	1,362	4,112	33.1 %	828	4,237	19.5 %	**	126	0.4 %	2,191	8,475	25.8 %
Kansas	1,804	3,990	45.2 %	709	4,869	14.6 %	5	96	5.1 %	2,519	8,955	28.1 %
Kentucky	2,523	4,361	57.9 %	1,000	5,143	19.4 %	1	76	1.9 %	3,524	9,579	36.8 %
Louisiana	2,146	4,860	44.2 %	1,158	6,640	17.4 %	3	64	4.0 %	3,307	11,564	28.6 %
Maine	548	1,647	33.3 %	350	1,531	22.8 %	2	13	14.3 %	900	3,191	28.2 %
Maryland	3,499	10,981	31.9 %	1,802	7,992	22.5 %	46	70	66.4 %	5,347	19,043	28.1 %
Massachusetts	6,718	13,128	51.2 %	2,119	9,760	21.7 %	6	276	2.0 %	8,843	23,163	38.2 %
Michigan	5,848	14,201	41.2 %	3,145	15,179	20.7 %	5	76	6.7 %	8,998	29,456	30.5 %
Minnesota	4,376	9,585	45.7 %	1,295	6,957	18.6 %	**	116	0.4 %	5,671	16,657	34.0 %
Mississippi	924	2,951	31.3 %	745	4,004	18.6 %	1	79	0.6 %	1,669	7,034	23.7 %
Missouri	3,430	7,854	43.7 %	1,539	8,005	19.2 %	1	156	0.7 %	4,970	16,015	31.0 %
Montana	485	1,429	34.0 %	208	1,191	17.5 %	**	20	0.4 %	694	2,640	26.3 %
Nebraska	899	2,747	32.7 %	403	3,338	12.1 %	2	21	10.1 %	1,304	6,106	21.4 %
Nevada	1,797	4,760	37.8 %	883	3,683	24.0 %	35	62	56.7 %	2,715	8,505	31.9 %
New Hampshire	745	1,664	44.7 %	355	1,669	21.2 %	**	10	3.4 %	1,100	3,344	32.9 %
New Jersey	5,611	14,927	37.6 %	2,798	12,630	22.2 %	123	299	41.3 %	8,532	27,855	30.6 %
New Mexico	790	2,514	31.4 %	592	2,504	23.6 %	4	35	10.8 %	1,386	5,053	27.4 %
New York	13,688	33,279	41.1 %	6,842	27,739	24.7 %	54	388	13.8 %	20,584	61,406	33.5 %
North Carolina	4,603	10,659	43.2 %	2,644	12,324	21.5 %	3	151	1.7 %	7,250	23,134	31.3 %
North Dakota	277	990	28.0 %	155	936	16.6 %	20	29	67.2 %	452	1,956	23.1 %
Northern Mariana Islands	**	17	0.8 %	5	72	7.4 %	0	0	0.0 %	5	89	6.1 %
Ohio	6,423	16,507	38.9 %	3,141	16,252	19.3 %	6	220	3.0 %	9,570	32,979	29.0 %
Oklahoma	2,016	3,927	51.3 %	1,007	4,954	20.3 %	2	61	3.7 %	3,026	8,941	33.8 %
Oregon	2,039	5,623	36.3 %	1,252	5,013	25.0 %	**	43	0.5 %	3,292	10,679	30.8 %
Pennsylvania	8,654	23,495	36.8 %	3,576	16,635	21.5 %	118	401	29.4 %	12,347	40,531	30.5 %
Puerto Rico	491	2,061	23.8 %	1,022	4,141	24.7 %	0	0	0.0 %	1,513	6,201	24.4 %
Rhode Island	768	1,444	53.2 %	347	1,343	25.8 %	7	11	65.6 %	1,122	2,798	40.1 %
South Carolina	1,673	4,494	37.2 %	1,207	5,911	20.4 %	1	98	0.5 %	2,881	10,503	27.4 %
South Dakota	210	1,108	19.0 %	225	1,076	20.9 %	1	12	8.6 %	436	2,196	19.9 %
Tennessee	3,269	7,038	46.4 %	1,815	9,274	19.6 %	2	122	1.2 %	5,086	16,435	30.9 %
Texas	15,664	36,145	43.3 %	8,490	38,093	22.3 %	9	518	1.7 %	24,162	74,757	32.3 %
Utah	2,007	5,086	39.5 %	955	3,894	24.5 %	1	49	2.4 %	2,963	9,029	32.8 %
Vermont	299	1,227	24.4 %	123	688	17.8 %	**	11	0.6 %	422	1,926	21.9 %
Virgin Islands	2	34	4.6 %	12	126	9.7 %	0	0	0.0 %	14	160	8.6 %
Virginia	4,602	13,446	34.2 %	2,385	10,633	22.4 %	13	146	9.1 %	7,000	24,226	28.9 %
Washington	4,664	10,882	42.9 %	2,327	9,154	25.4 %	14	51	27.4 %	7,005	20,087	34.9 %
West Virginia	490	2,283	21.5 %	377	2,096	18.0 %	2	54	3.6 %	870	4,434	19.6 %
Wisconsin	2,690	7,571	35.5 %	1,732	6,764	25.6 %	1	114	0.9 %	4,423	14,448	30.6 %
Wyoming	282	873	32.3 %	102	683	15.0 %	**	14	1.0 %	385	1,570	24.5 %
Total	186,659	456,283	40.9 %	96,838	439,231	22.0 %	825	6,473	12.7 %	284,322	901,987	31.5 %

Source: Raw data from Local Number Portability Administrator (iconectiv, LLC) and Numbering Resource Utilization/Forecast Reports filed with iconectiv, LLC as of December 31, 2020. Rollups performed by the Industry Analysis Division.

Note: Unlike in Tables 14 - 19, in this table the carrier type is that of the carrier porting the number. This is done to provide a measure of the likelihood that a number currently employed in either service will be ported.

¹ The vast majority of these numbers are ported because customers changed carriers.

* Indicates that the number has been withheld to protect carrier confidentiality.

** Indicates a number between 1 and 499.

Table 21
Numbers Assigned for Toll-Free Service¹

Year ²	Working Numbers	Miscellaneous Numbers ³	Assigned Numbers	Available Numbers
2010	28,881,898	456,394	29,338,292	10,451,794
2011	30,985,584	666,819	31,652,403	8,137,690
2012	33,362,705	536,522	33,899,227	5,890,867
2013	36,532,431	616,373	37,148,834	10,621,260
2014	38,973,302	677,531	39,650,833	8,119,261
2015	39,952,307	560,325	40,512,632	7,257,462
2016	40,536,592	716,063	41,252,655	6,517,439
2017	40,985,379	615,481	41,600,860	14,149,234
2018	41,227,677	518,805	42,217,352	14,003,612
2019	40,502,337	630,311	41,132,648	14,617,446
2020	41,466,929	392,355	41,859,284	13,890,810

¹ Toll-free (800) service was initially offered by AT&T in 1967. On May 1, 1993, procedures for routing toll-free calls were changed and 800 numbers were made "portable" so customers who switched service providers could retain their numbers. Due to the growth in demand for toll-free numbers, a new toll-free calling code, 888, was added in March 1996, which made it possible to assign about 8 million new toll-free numbers. A third toll-free calling code, 877, was added in April 1998; a fourth toll-free code, 866, was added in July 2000; a fifth toll-free code, 855, was added in October 2010; a sixth toll-free code, 844, was added in December 2013; and a seventh toll-free code, 833, was added in June 2017.

² As of December 31, 2020. Data from before 2010 can be found in the "Data as of December 31, 2019" edition of this report, which can be found at <https://www.fcc.gov/document/numbering-resource-utilization-nruf-us-dec-31-2019>.

³ Miscellaneous numbers include those in the 800, 888, 877, 866, 855, 844, and 833 service management systems maintained by Database Service Management, Inc., and categorized as reserved, assigned but not yet activated, recently disconnected, or suspended.

Table 22
Numbers Assigned for 800 Toll-Free Service¹

Year ²	Working Numbers	Miscellaneous Numbers ³	Assigned Numbers	Available Numbers
2010	7,811,254	58,832	7,870,086	0
2011	7,805,880	64,213	7,870,093	0
2012	7,820,408	49,685	7,870,093	0
2013	7,884,262	95,738	7,980,000	0
2014	7,810,483	59,611	7,870,094	0
2015	7,817,702	52,392	7,870,094	0
2016	7,825,200	44,894	7,870,094	0
2017	7,797,956	72,138	7,870,094	0
2018	7,795,900	74,194	7,870,094	0
2019	7,790,370	79,724	7,870,094	0
2020	7,814,822	55,187	7,870,009	85

Table 23
Numbers Assigned for 888 Toll-Free Service¹

Year ²	Working Numbers	Miscellaneous Numbers ³	Assigned Numbers	Available Numbers
2010	6,587,077	78,444	6,665,521	1,314,479
2011	7,027,590	207,448	7,235,038	744,962
2012	7,753,648	74,401	7,828,049	151,951
2013	7,884,262	95,738	7,980,000	0
2014	7,802,363	163,836	7,966,199	13,801
2015	7,654,449	110,251	7,764,700	215,300
2016	7,460,689	73,268	7,533,957	446,043
2017	7,322,804	187,513	7,510,317	469,683
2018	7,177,872	518,805	7,696,677	754,193
2019	6,623,433	101,433	6,724,866	1,255,134
2020	6,487,784	45,022	6,532,806	1,447,194

Note: Data from before 2010 can be found in Table 18.6 of the February 2010 edition of the Trends in Telephone Service, which can be found at:
<https://www.fcc.gov/general/trends-telephone-service>.

^{1,2,3} See footnotes for Table 21.

Table 24
Numbers Assigned for 877 Toll-Free Service¹

Year ²	Working Numbers	Miscellaneous Numbers ³	Assigned Numbers	Available Numbers
2010	6,538,482	102,199	6,640,681	1,339,319
2011	6,863,007	100,962	6,963,969	1,016,031
2012	7,378,618	106,795	7,485,413	494,587
2013	7,847,193	132,807	7,980,000	0
2014	7,772,785	158,792	7,931,577	48,423
2015	7,648,038	104,868	7,752,906	227,094
2016	7,530,028	82,222	7,612,250	367,750
2017	7,289,432	80,434	7,369,866	610,134
2018	6,930,687	75,686	7,006,373	973,627
2019	6,635,993	59,174	6,695,167	1,284,833
2020	6,524,085	46,440	6,570,525	1,409,475

Table 25
Numbers Assigned for 866 Toll-Free Service¹

Year ²	Working Numbers	Miscellaneous Numbers ³	Assigned Numbers	Available Numbers
2010	7,651,341	139,092	7,790,433	189,567
2011	7,695,911	185,229	7,881,140	98,860
2012	7,725,373	254,628	7,980,001	0
2013	7,880,100	99,900	7,980,000	0
2014	7,779,412	152,329	7,931,741	48,259
2015	7,656,916	126,120	7,783,036	196,964
2016	7,444,279	71,523	7,515,802	464,198
2017	7,209,228	96,735	7,305,963	674,037
2018	6,855,461	73,236	6,928,697	1,051,303
2019	6,503,099	79,212	6,582,311	1,397,689
2020	6,348,744	69,837	6,418,581	1,561,419

Note: Data from before 2010 can be found in Table 18.6 of the September 2010 edition of the Trends in Telephone Service, which can be found at: <https://www.fcc.gov/general/trends-telephone-service>

^{1,2,3} See footnotes for Table 21.

Table 26
Numbers Assigned for 855 Toll-Free Service¹

Year ²	Working Numbers	Miscellaneous Numbers ³	Assigned Numbers	Available Numbers
2010	293,744	77,827	371,571	7,608,429
2011	1,593,196	108,967	1,702,163	6,277,837
2012	2,684,658	51,013	2,735,671	5,244,329
2013	5,040,432	194,479	5,234,911	2,745,089
2014	5,821,720	68,796	5,890,516	2,089,484
2015	5,894,229	73,639	5,967,868	2,012,132
2016	5,884,346	95,561	5,979,907	2,000,093
2017	5,761,972	29,020	5,790,992	2,189,008
2018	5,721,883	132,098	5,853,981	2,126,019
2019	5,726,390	63,604	5,789,994	2,190,006
2020	5,971,309	43,159	6,014,468	1,965,532

^{1,2,3} See footnotes for Table 21.

Table 27
Numbers Assigned for 844 Toll-Free Service¹

Year ²	Working Numbers	Miscellaneous Numbers ³	Assigned Numbers	Available Numbers
2013	59,613	44,216	103,829	7,876,171
2014	1,986,539	74,167	2,060,706	5,919,294
2015	3,280,973	93,055	3,374,028	4,605,972
2016	4,392,050	348,595	4,740,645	3,239,355
2017	4,763,597	80,296	4,843,893	3,136,107
2018	4,783,161	47,365	4,830,526	3,149,474
2019	4,680,038	198,594	4,878,632	3,101,368
2020	5,001,231	59,215	5,060,446	2,919,554

^{1,2,3} See footnotes for Table 21.

Table 28
Numbers Assigned for 833 Toll-Free Service¹

Year ²	Working Numbers	Miscellaneous Numbers ³	Assigned Numbers	Available Numbers
2017	840,390	69,345	909,735	7,070,265
2018	1,962,713	68,291	2,031,004	5,948,996
2019	2,543,014	48,570	2,591,584	5,388,416
2020	3,318,954	73,495	3,392,449	4,587,551

^{1,2,3} See footnotes for Table 21.

Table 29
Area Codes by State (1947 - 2020)

Area Code	State / Jurisdiction	Area Code Opened	Area Code	State / Jurisdiction	Area Code Opened	Area Code	State / Jurisdiction	Area Code Opened	Area Code	State / Jurisdiction	Area Code Opened
205	Alabama	Jan-47	706	Georgia	May-92	235	Missouri	Mar-24	445	Pennsylvania	Mar-18
251	Alabama	Jun-01	762	Georgia	May-06	314	Missouri	Jan-47	484	Pennsylvania	Jun-99
256	Alabama	Mar-98	770	Georgia	Aug-95	417	Missouri	Jan-50	570	Pennsylvania	Dec-98
334	Alabama	Jan-95	912	Georgia	Jan-54	573	Missouri	Jan-96	610	Pennsylvania	Jan-94
659	Alabama	Nov-19	671	Guam	Jul-97	636	Missouri	May-99	717	Pennsylvania	Jan-47
938	Alabama	Jul-10	808	Hawaii	Jan-57	660	Missouri	Oct-97	724	Pennsylvania	Feb-98
907	Alaska	Jan-57	208	Idaho	Jan-47	816	Missouri	Jan-47	814	Pennsylvania	Jan-47
684	American Samoa	Oct-04	986	Idaho	Sep-17	975	Missouri	Oct-23	878	Pennsylvania	Aug-01
480	Arizona	Mar-99	217	Illinois	Jan-47	406	Montana	Jan-47	787	Puerto Rico	Mar-96
520	Arizona	Mar-95	224	Illinois	Jan-02	308	Nebraska	Jan-55	939	Puerto Rico	Sep-01
602	Arizona	Jan-47	309	Illinois	Jan-57	402	Nebraska	Jan-47	401	Rhode Island	Jan-47
623	Arizona	Mar-99	312	Illinois	Jan-47	531	Nebraska	Mar-11	803	South Carolina	Jan-47
928	Arizona	Jun-01	331	Illinois	Oct-07	702	Nevada	Jan-47	839	South Carolina	May-20
327	Arkansas	Feb-24	618	Illinois	Jan-47	725	Nevada	Jun-14	843	South Carolina	Mar-98
479	Arkansas	Jan-02	630	Illinois	Aug-96	775	Nevada	Dec-98	854	South Carolina	Oct-15
501	Arkansas	Jan-47	708	Illinois	Nov-89	603	New Hampshire	Jan-47	864	South Carolina	Dec-95
870	Arkansas	Apr-97	730	Illinois	Jul-23	201	New Jersey	Jan-47	605	South Dakota	Jan-47
209	California	Jan-58	773	Illinois	Oct-96	551	New Jersey	Dec-01	423	Tennessee	Sep-95
213	California	Jan-47	779	Illinois	Mar-07	609	New Jersey	Jan-57	615	Tennessee	Jan-54
279	California	Mar-18	815	Illinois	Jan-47	640	New Jersey	Sep-18	629	Tennessee	Mar-15
310	California	Nov-91	847	Illinois	Jan-96	732	New Jersey	Jun-97	731	Tennessee	Feb-01
323	California	Jun-98	861	Illinois	Feb-23	848	New Jersey	Dec-01	865	Tennessee	Nov-99
341	California	Jul-19	872	Illinois	Nov-09	856	New Jersey	Jun-99	901	Tennessee	Jan-47
369	California	Feb-23	219	Indiana	Jan-48	862	New Jersey	Dec-01	931	Tennessee	Sep-97
408	California	Jan-59	260	Indiana	Jan-02	908	New Jersey	Nov-90	210	Texas	Nov-92
415	California	Jan-47	317	Indiana	Jan-47	973	New Jersey	Jun-97	214	Texas	Jan-47
424	California	Aug-06	463	Indiana	Nov-16	505	New Mexico	Jan-47	254	Texas	May-97
442	California	Nov-09	574	Indiana	Jan-02	575	New Mexico	Oct-07	281	Texas	Nov-96
510	California	Sep-91	765	Indiana	Feb-97	212	New York	Jan-47	325	Texas	Apr-03
530	California	Nov-97	812	Indiana	Jan-47	315	New York	Jan-47	346	Texas	Jul-14
559	California	Nov-98	930	Indiana	Mar-15	329	New York	Mar-23	361	Texas	Feb-99
562	California	Jan-97	319	Iowa	Jan-47	332	New York	Jun-17	409	Texas	Nov-82
619	California	Jan-82	515	Iowa	Jan-47	347	New York	Oct-99	430	Texas	Feb-03
626	California	Jun-97	563	Iowa	Mar-01	363	New York	Jan-23	432	Texas	Apr-03
628	California	Mar-15	641	Iowa	Jul-00	516	New York	Jan-51	469	Texas	Jul-99
650	California	Aug-97	712	Iowa	Jan-47	518	New York	Jan-47	512	Texas	Jan-47
657	California	Sep-08	316	Kansas	Jan-47	585	New York	Nov-01	682	Texas	Oct-00
661	California	Feb-99	620	Kansas	Feb-01	607	New York	Jan-54	713	Texas	Jan-47
669	California	Nov-12	785	Kansas	Jul-97	624	New York	Nov-23	726	Texas	Oct-17
707	California	Jan-59	913	Kansas	Jan-47	631	New York	Nov-99	737	Texas	Jul-13
714	California	Jan-51	270	Kentucky	Apr-99	646	New York	Jul-99	806	Texas	Jan-57
747	California	May-09	364	Kentucky	Mar-14	680	New York	Mar-17	817	Texas	Jan-53
760	California	Mar-97	502	Kentucky	Jan-47	716	New York	Jan-47	830	Texas	Jul-97
805	California	Jan-57	606	Kentucky	Jan-55	718	New York	Sep-84	832	Texas	Jan-99
818	California	Jan-84	859	Kentucky	Apr-00	838	New York	Sep-17	903	Texas	Nov-90
820	California	Jun-18	225	Louisiana	Aug-98	845	New York	Jun-00	915	Texas	Jan-47
831	California	Jul-98	318	Louisiana	Jan-57	914	New York	Jan-47	936	Texas	Feb-00
858	California	Jun-99	337	Louisiana	Oct-99	917	New York	Jan-92	940	Texas	May-97

Table 29
Area Codes by State (1947 - 2020)

Area Code	State / Jurisdiction	Area Code Opened	Area Code	State / Jurisdiction	Area Code Opened	Area Code	State / Jurisdiction	Area Code Opened	Area Code	State / Jurisdiction	Area Code Opened
909	California	Nov-92	504	Louisiana	Jan-47	929	New York	Apr-11	956	Texas	Jul-97
916	California	Jan-47	985	Louisiana	Feb-01	934	New York	Jul-16	972	Texas	Sep-96
925	California	Mar-98	207	Maine	Jan-47	252	North Carolina	Mar-98	979	Texas	Feb-00
949	California	Apr-98	227	Maryland	Jun-23	336	North Carolina	Dec-97	385	Utah	Mar-09
951	California	Jul-04	240	Maryland	Jun-97	704	North Carolina	Jan-47	435	Utah	Sep-97
303	Colorado	Jan-47	301	Maryland	Jan-47	743	North Carolina	May-16	801	Utah	Jan-47
719	Colorado	Mar-88	410	Maryland	Oct-91	828	North Carolina	Mar-98	802	Vermont	Jan-47
720	Colorado	Jun-98	443	Maryland	Jun-97	910	North Carolina	Nov-93	340	Virgin Islands	Jun-97
970	Colorado	Apr-95	667	Maryland	Mar-12	919	North Carolina	Jan-54	276	Virginia	Sep-01
203	Connecticut	Jan-47	339	Massachusetts	May-01	980	North Carolina	Apr-01	434	Virginia	Jun-01
475	Connecticut	Dec-09	351	Massachusetts	May-01	984	North Carolina	Apr-12	540	Virginia	Jul-95
860	Connecticut	Aug-95	413	Massachusetts	Jan-47	701	North Dakota	Jan-47	571	Virginia	Mar-00
959	Connecticut	Aug-14	508	Massachusetts	Jul-88	670	Northern Mariana Islands	Jul-97	686	Virginia	Feb-24
302	Delaware	Jan-47	617	Massachusetts	Jan-47	216	Ohio	Jan-47	703	Virginia	Jan-47
202	District Of Columbia	Jan-47	774	Massachusetts	May-01	220	Ohio	Apr-15	757	Virginia	Jul-96
239	Florida	Mar-02	781	Massachusetts	Sep-97	234	Ohio	Oct-00	804	Virginia	Jun-73
305	Florida	Jan-47	857	Massachusetts	May-01	283	Ohio	Apr-23	206	Washington	Jan-47
321	Florida	Nov-99	978	Massachusetts	Sep-97	326	Ohio	Mar-20	253	Washington	Apr-97
324	Florida	Feb-24	231	Michigan	Jun-99	330	Ohio	Mar-96	360	Washington	Jan-95
352	Florida	Dec-95	248	Michigan	May-97	380	Ohio	Feb-16	425	Washington	Apr-97
386	Florida	Feb-01	269	Michigan	Jul-02	419	Ohio	Jan-47	509	Washington	Jan-57
407	Florida	Apr-88	313	Michigan	Jan-47	436	Ohio	Mar-24	564	Washington	Aug-17
561	Florida	May-96	517	Michigan	Jan-47	440	Ohio	Aug-97	304	West Virginia	Jan-47
645	Florida	Aug-23	586	Michigan	Sep-01	513	Ohio	Jan-47	681	West Virginia	Mar-09
689	Florida	Jun-19	616	Michigan	Jan-47	567	Ohio	Jan-02	262	Wisconsin	Sep-99
727	Florida	Jul-98	734	Michigan	Dec-97	614	Ohio	Jan-47	274	Wisconsin	May-23
728	Florida	Mar-23	810	Michigan	Dec-93	740	Ohio	Dec-97	353	Wisconsin	Sep-23
754	Florida	Aug-01	906	Michigan	Mar-61	937	Ohio	Sep-96	414	Wisconsin	Jan-47
772	Florida	Feb-02	947	Michigan	Sep-02	405	Oklahoma	Jan-47	534	Wisconsin	Aug-10
786	Florida	Mar-98	989	Michigan	Apr-01	539	Oklahoma	Apr-11	608	Wisconsin	Jan-55
813	Florida	Jan-53	218	Minnesota	Jan-47	580	Oklahoma	Nov-97	715	Wisconsin	Jan-47
850	Florida	Jun-97	320	Minnesota	Mar-96	918	Oklahoma	Jan-53	920	Wisconsin	Jul-97
863	Florida	Sep-99	507	Minnesota	Jan-54	458	Oregon	Feb-10	307	Wyoming	Jan-47
904	Florida	Jul-65	612	Minnesota	Jan-47	503	Oregon	Jan-47			
941	Florida	May-95	651	Minnesota	Jul-98	541	Oregon	Nov-95			
954	Florida	Sep-95	763	Minnesota	Feb-00	971	Oregon	Oct-00			
229	Georgia	Aug-00	952	Minnesota	Feb-00	215	Pennsylvania	Jan-47			
404	Georgia	Jan-47	228	Mississippi	Sep-97	223	Pennsylvania	Sep-17			
470	Georgia	Feb-10	601	Mississippi	Jan-47	267	Pennsylvania	Jul-99			
478	Georgia	Aug-00	662	Mississippi	Apr-99	272	Pennsylvania	Oct-13			
678	Georgia	Jan-98	769	Mississippi	Mar-05	412	Pennsylvania	Jan-47			

Source: North American Numbering Plan Administrator (Somos, Inc).

Table 30
Area Code Assignments (2010-2020)

State / Jurisdiction	Implementation Date	Previous Code	Added Code
Oregon	February 2010	541	458
Georgia	February 2010	678	470
Alabama	July 2010	256	938
Wisconsin	August 2010	715	534
Nebraska	March 2011	402	531
Oklahoma	April 2011	918	539
New York	April 2011	347	929
Maryland	March 2012	443	667
North Carolina	April 2012	919	984
California	November 2012	408	669
Texas	July 2013	512	737
Pennsylvania	October 2013	570	272
Kentucky	March 2014	270	364
Nevada	June 2014	702	725
Texas	July 2014	832	346
Connecticut	August 2014	860	959
Indiana	March 2015	812	930
California	March 2015	415	628
Tennessee	March 2015	615	629
Ohio	April 2015	740	220
South Carolina	October 2015	843	854
Ohio	February 2016	614	380
North Carolina	May 2016	336	743
New York	July 2016	631	934
Indiana	November 2016	317	463
New York	March 2017	315	680
New York	June 2017	212	332
Washington	August 2017	360	564
Idaho	September 2017	208	986
New York	September 2017	518	838
Pennsylvania	September 2017	717	223
Texas	October 2017	210	726
Pennsylvania	March 2018	267	445
California	March 2018	916	279
California	June 2018	805	820
New Jersey	September 2018	609	640
Florida	June 2019	407	689
California	July 2019	510	341
Alabama	November 2019	205	659
Ohio	March 2020	937	326
South Carolina	May 2020	803	839

Source: North American Numbering Plan Administrator (Somos, Inc).

Source: North American Numbering Plan Administrator (NANPA), which can be accessed at www.nanpa.com. Planning letters can be found at www.nanpa.com/planning_letters/index.html.